

# TRACK SYSTEM TECHNICAL SPECIFICATIONS



STYLISH, **MADE-TO-MEASURE SOLUTIONS**

2015 Version 1.0

The**ShutterShop**

# TRACK SYSTEM SPECIFICATIONS CONTENTS

To go to required section click [coloured headings](#) below

## Section 1

|   |    |
|---|----|
| <a href="#">Overview of Track Systems</a> | 03 |
| 90° Bi-Fold Track Shutters                | 04 |
| 180° Bi-Fold Track Shutters               | 09 |
| 90° Multi-Fold Track Shutters             | 14 |
| 90° Floating Track Shutters               | 14 |
| By-PassTrack Shutters                     | 19 |

# AN OVERVIEW OF TRACK SYSTEMS

There are four types of track system:

## Track Shutters 90° Bi-fold (Outside, Semi Outside & Inside Mount)

Shutters fold 90° degrees to the frame only leaving shutters to protrude into room. Bi-fold and Multi-fold are available in all materials.

## Track Shutters 90° Floating (Outside, Semi Outside & Inside Mount)

Shutters can be hinged as two or four panel groups to fold and slide in either direction. This gives greater flexibility on shutter positions. Available in all materials.

## Track Shutters By-Pass (Outside, Semi Outside & Inside Mount)

Shutters up to three tracks deep can be ordered to give many by-pass options to the end user. By-pass can be ordered in either open or closed bypass - Where louvres will need to be either open or closed to by-pass each other. Available in all materials.

Note: 3 Track is only available in Sumatra, Fiji and Cuba.

## Track Shutters 180° Bi-Fold

For outside mount applications, 180° track shutters have a system which un-pivots the second panel on the track, allowing it to lay flat on the wall either side of the recess.

### Top-track

Shutters with top-tracks are generally fitted to larger windows, where more than the recommended number of panels are required to cover the window. They are ideal for patio or French doors as they give good support to the panels, without the need for a bottom frame.

Top-tracks are available in a white, coffee powder-coat finish or anodized. The required colour should be specified by the distributor on the order card if it differs from below spec.

**White:** will be the default colour for all paint colours and 110 Limed White

**Coffee:** will be the default colour for all stain colours.

**Anodized:** will be the optional colour.

### Bottom-track (Only available in anodized)

If required, a bottom track can also be installed below the panels. This serves as a guide for the panels, prevents panel swing when folded back and part-fills the 19mm gap below the panels.

**NB.** Bottom track will be supplied as default for all multi-fold installations and is optional for bi-fold please note.

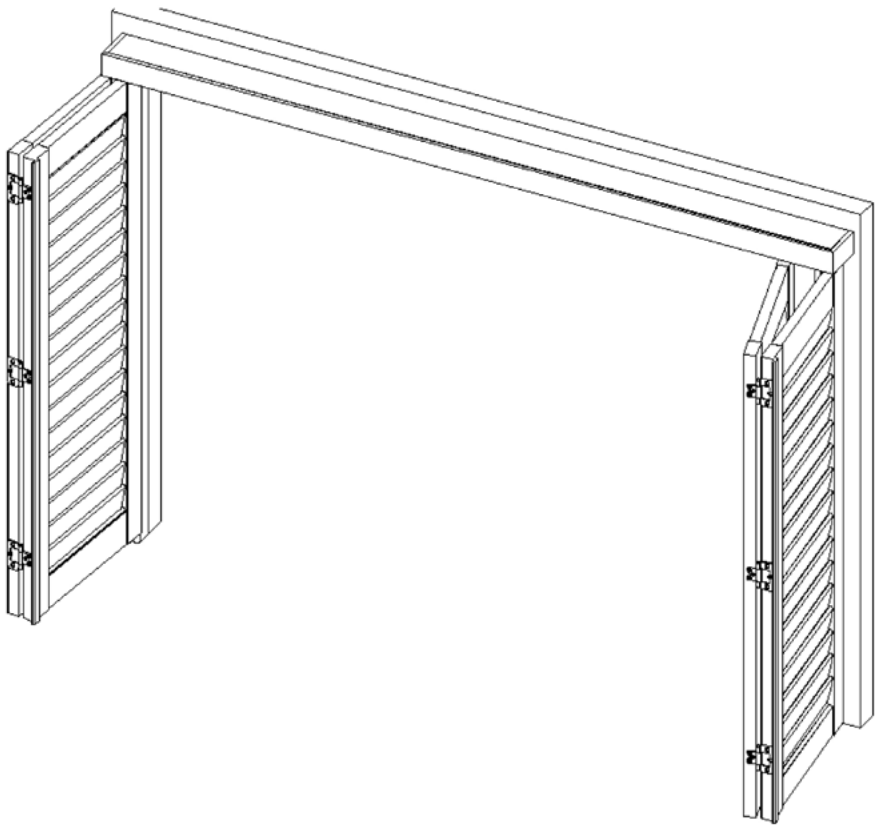
### Frames split when the frames length exceed the below limitation.

When frame lengths (including shutter frames, batten, fascia, header and tracks for track system) exceed the below limitation, then the frames will be split as the below chart describes. Please review the chart for reference.

| Shipping Method   | Program      | Frame Length (L) (mm)                                 |
|-------------------|--------------|---|
| Standard shipping | all programs | 3630<L≤7260 (2 sections)/<br>L>7260 (3 sections)      |
| Airfreight        | all programs | 3048<L≤6096 (2 sections)/<br>6096<L≤9144 (3 sections) |

# TRACK SHUTTERS - 90° Bi-Fold

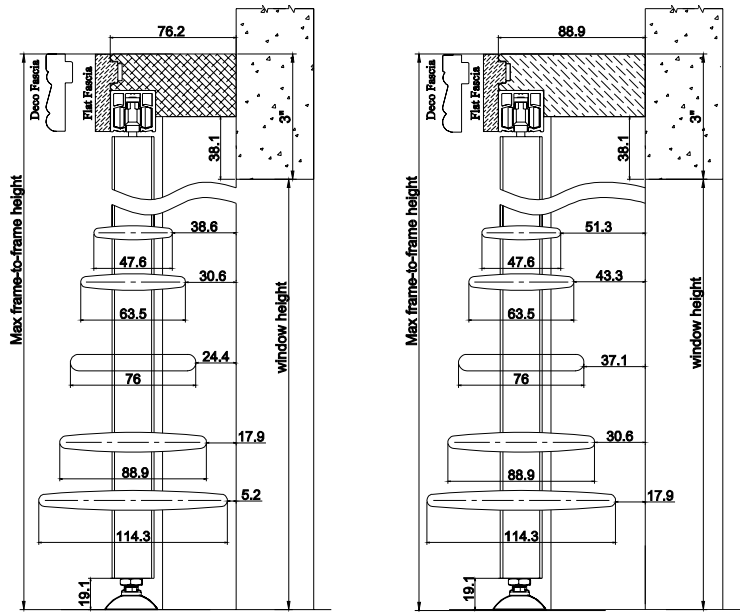
| GUIDELINES AND SPECS  |   |
|-----------------------|---|
| Material              | Available for all shutters materials  |
| Stile                 | Only 50.8mm, 57mm D Mould and butt stiles are available. centre stile and rebate stile are not available  |
| Panel Size Limitation | Same as the regular shutter spec.   |
| Size Definition       | <u>Outside Mount</u><br>Max frame-to frame width: window width + 89mm<br>Max frame-to-frame height: window height + 76mm<br><br><u>Inside Mount &amp; Semi-Inside Mount</u><br>Max frame-to-frame width: window width - 3.2mm<br>Max frame-to-frame height: window height - 3.2mm |



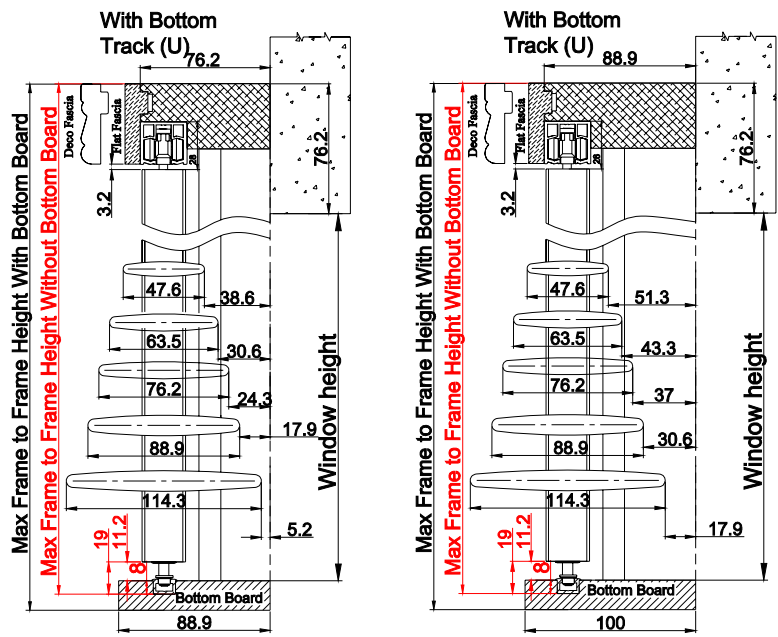
Track is pre-installed onto the header; standard 1 track only

MOUNTING OPTIONS: Outside Mount

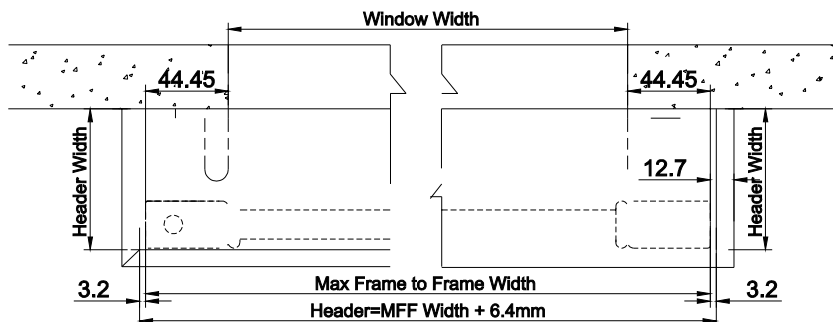
Side View



Side View (U Track w/Bottom Board)



Top View

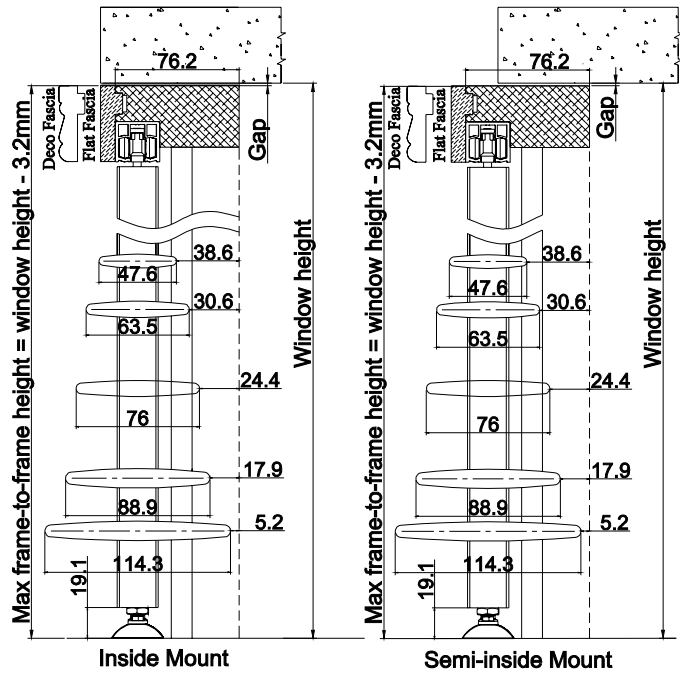


Fascia return will protrude from the panel by approximately 12.7mm each side.

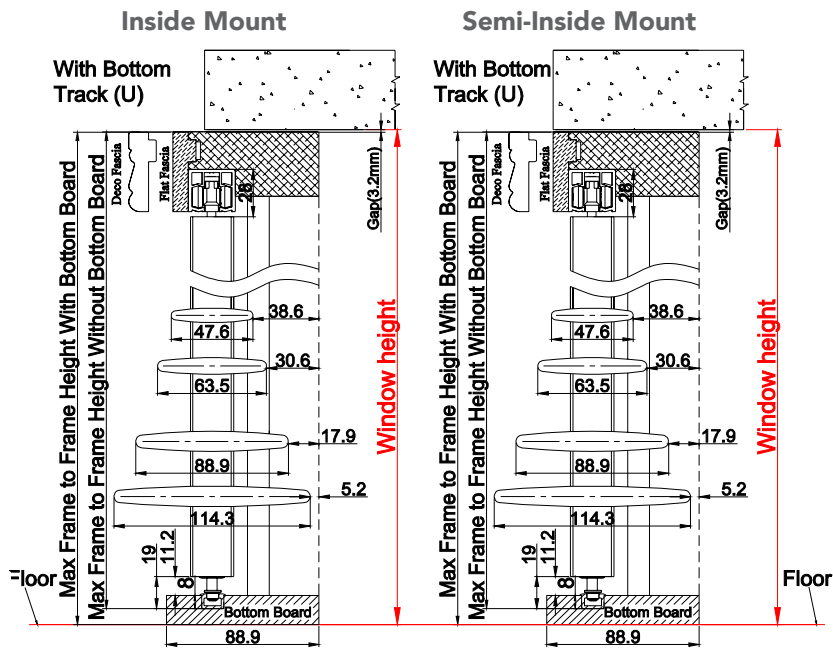
This material belongs to ShutterShop and copying or reproduction in whole or in part is strictly prohibited. We reserve the right to alter specifications without prior notice.

Semi-Inside/Inside Mount

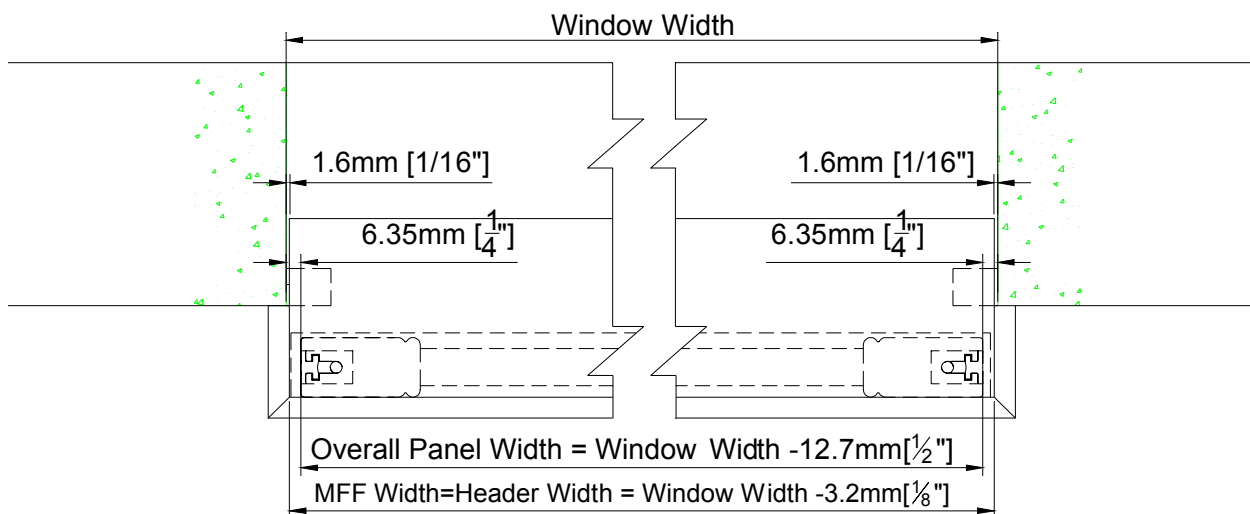
Side View



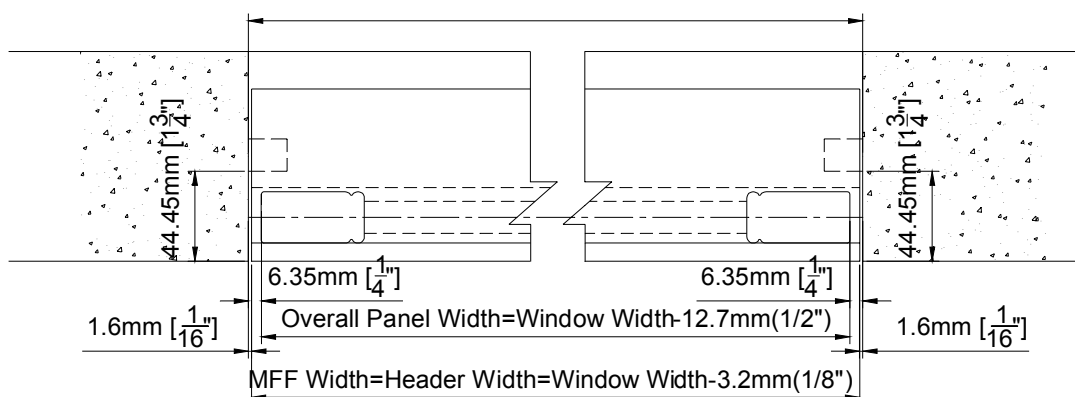
Side View (U Track w/Bottom Board)



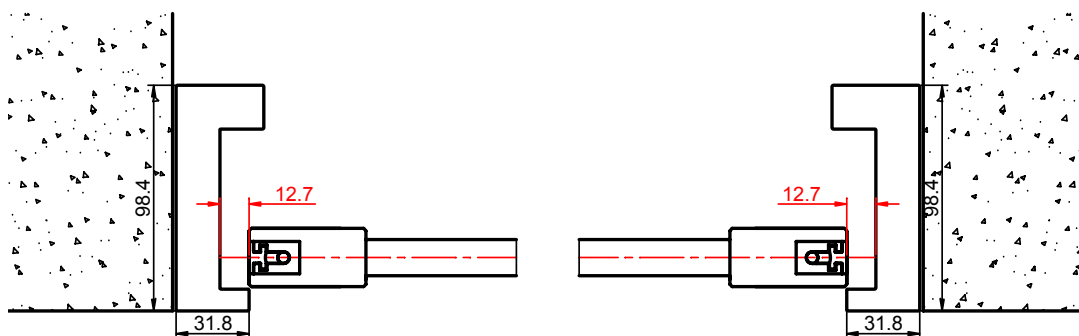
## Semi-Inside Mount Top View Without Side Frames



## Inside Mount Top View With Side Frames



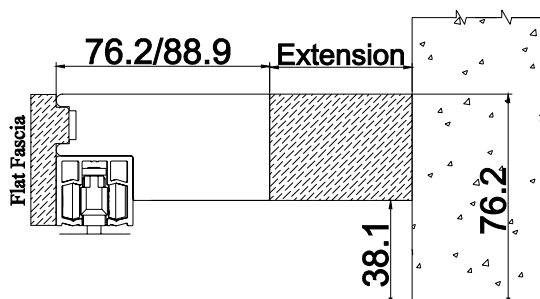
## Side Frame for 89mm Header Inside Mount: (Optional)



Header extension: optional

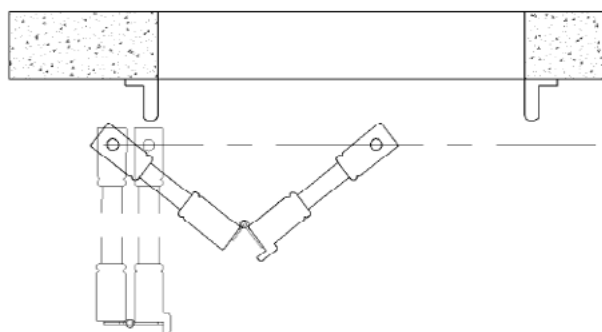
Custom extension up to 50.8mm for header

The extension will be supplied loose with installation screws.

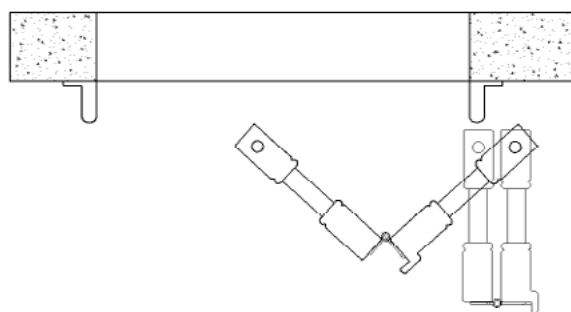


## PANEL CONFIGURATION

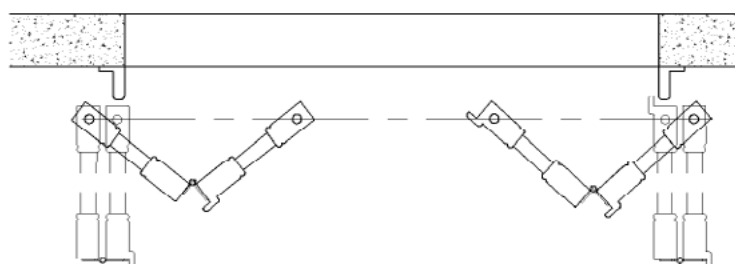
LL



RR



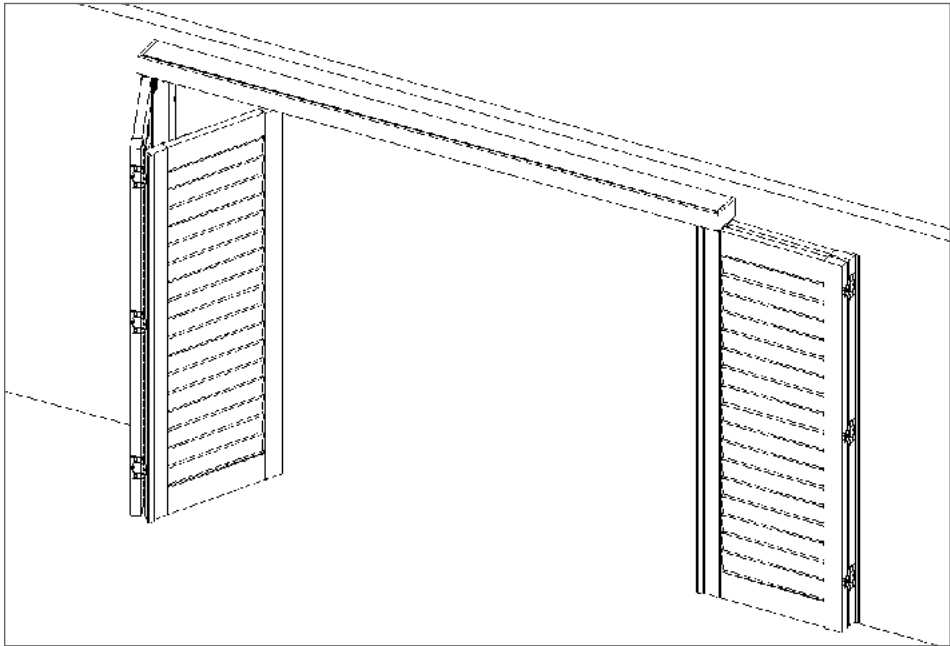
LLRR





# TRACK SHUTTERS - 180° BI-FOLD

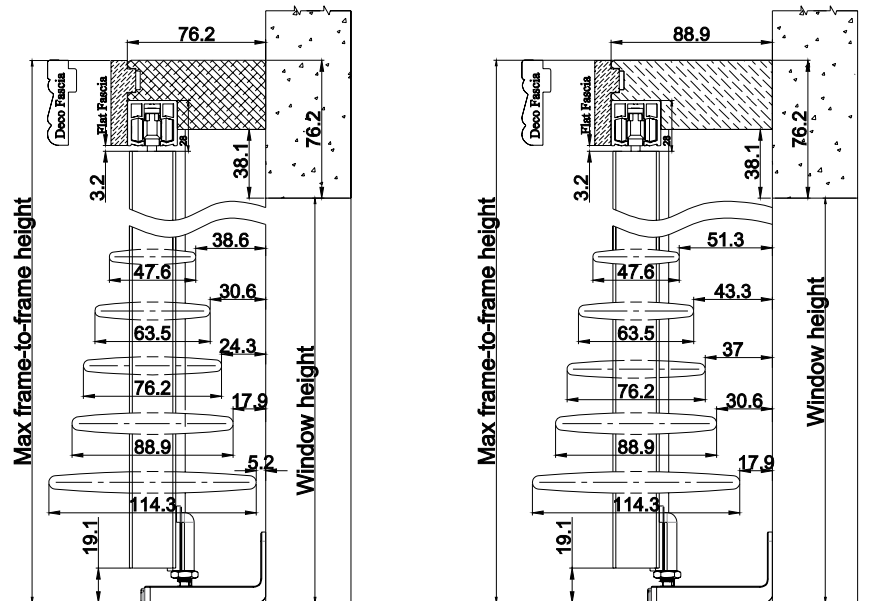
| GUIDELINES AND SPECIFICATIONS |  |
|-------------------------------|--|
| Material                      | Available for all shutters materials   |
| Stile                         | Only 50.8mm, 57mm D Mould and butt stiles are available. centre stile and rebate stile are not available                 |
| Panel Size Limitation         | Same as the regular shutter spec.  |
| Size Definition               | <u>Outside Mount</u><br>Max frame-to frame width: window width + 89mm<br>Max frame-to-frame height: window height + 76mm |



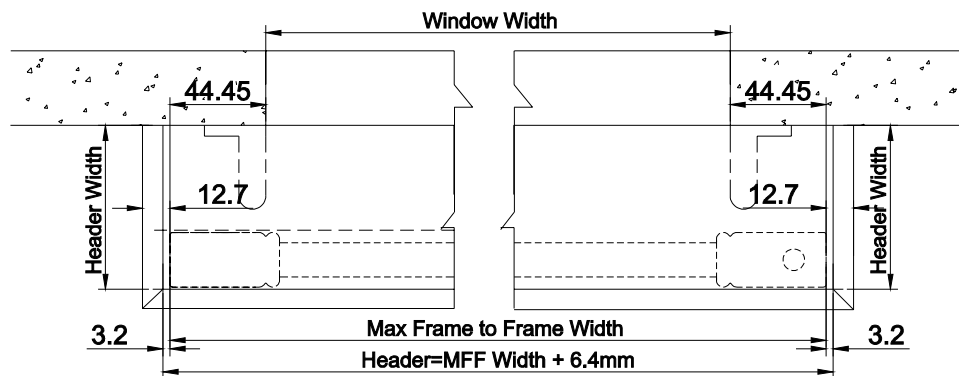
Track is pre-installed onto the header; standard 1 track only

## MOUNTING OPTIONS: Outside Mount Only

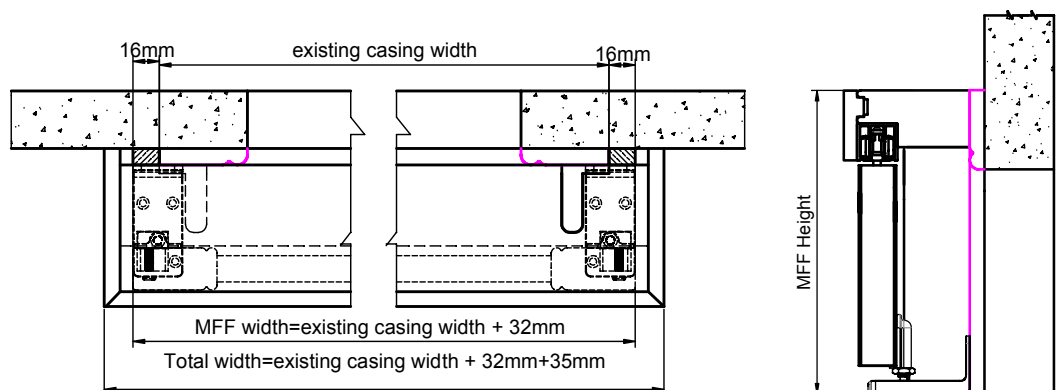
### Side View



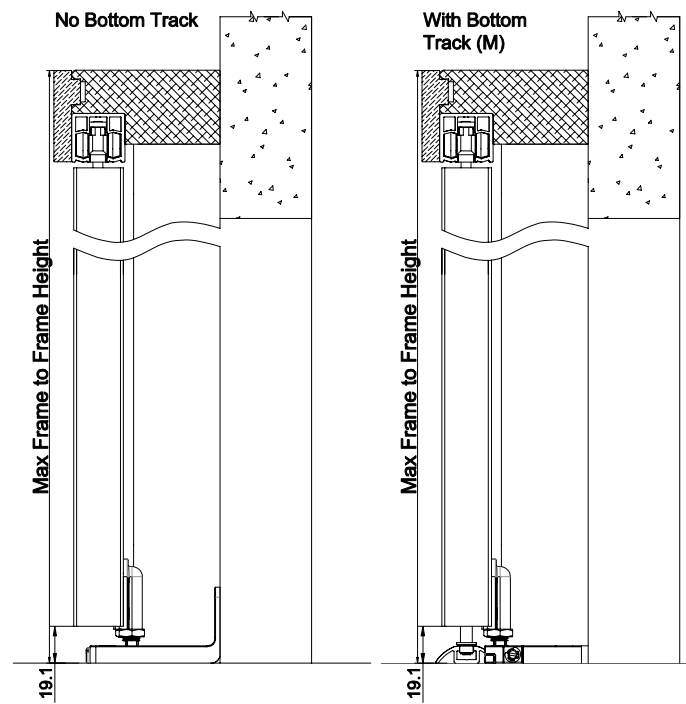
### Top View (Without Casing)



### (With Existing Casing)



Fascia return will protrude from the panel by approximately 12.7mm each side.

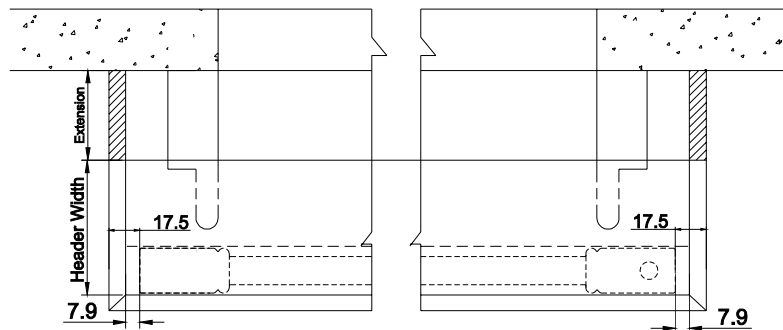


Bottom track is supplied for all Multi-Fold orders and optional for Bi-Fold.

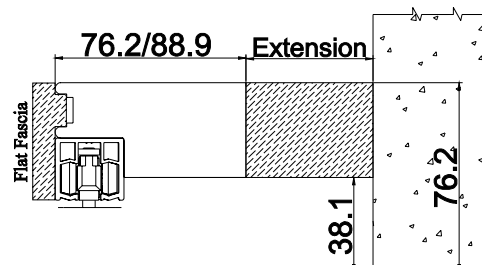
#### Header Extension: Optional

Custom extension up to 50.8mm for header.

When extension is needed, the header will protrude the panel by 7.9mm for each side and the fascia return will protrude the panel 17.5mm for each side.

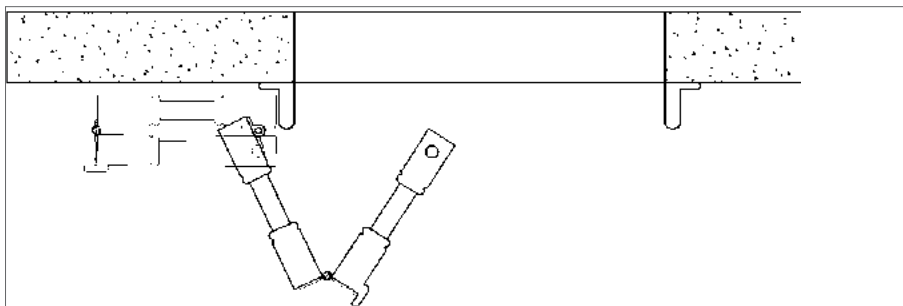


The extension will be supplied loose with installation screws.

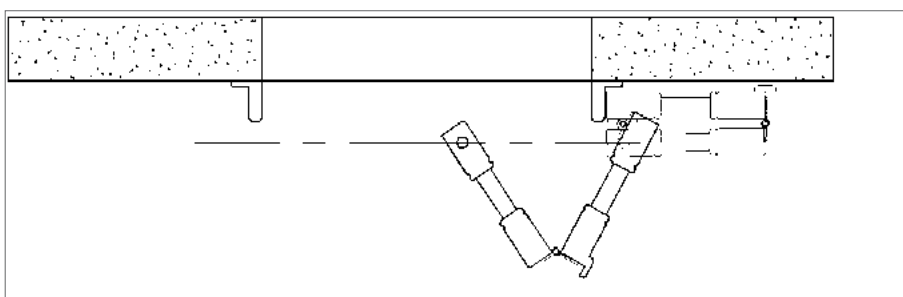


## PANEL CONFIGURATION

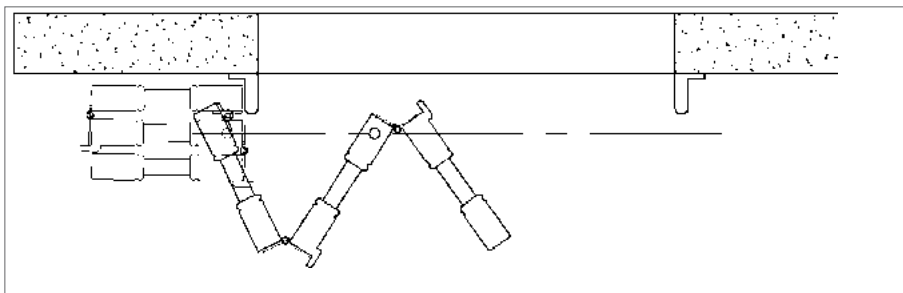
**LL**



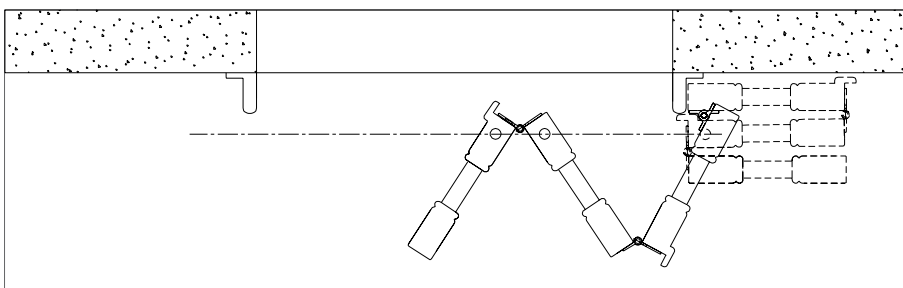
**RR**



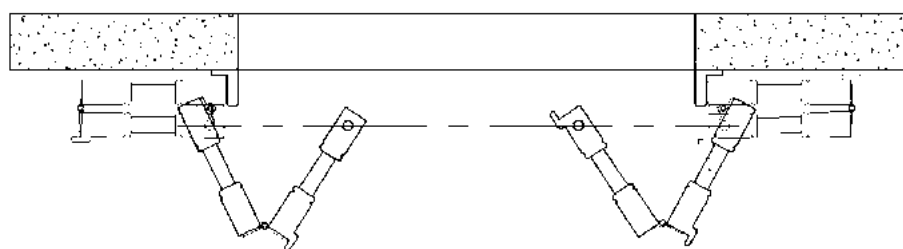
**LLL  
(Wood Only)**



**RRR  
(Wood Only)**

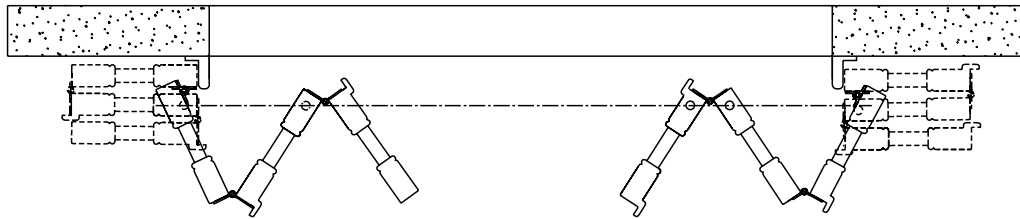


**LLRR**



## LLLRRR

(Wood Only)



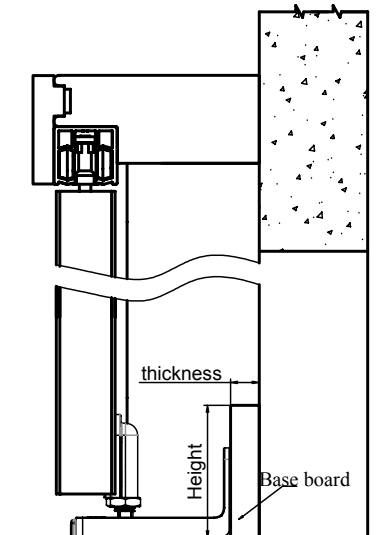
### Notes:

If there is no baseboard to the wall, a 76mm header can be used.

If there is a baseboard to the wall, then it should be as below:

1. If the baseboard thickness is less or equal to 15.9mm, an 89mm header can be used.
2. If the baseboard thickness is greater than 15.9mm, a 76mm header with build out is needed. Note; The build out thickness = Baseboard thickness - 3.2mm.

Please see drawing opposite



## 180° Bi-fold Track Shutters Framing Materials

| TYPE                                   | HEADER DIMENSION | TOP FASCIA DIMENSION | LIGHT BLOCK STRIP DIMENSION |
|--|------------------|----------------------|-----------------------------|
| Header, Top Fascia & Light Block Strip | 76mm             | 47mm                 | 38.1mm                      |
|  | 89mm             |                      | 50.8mm                      |

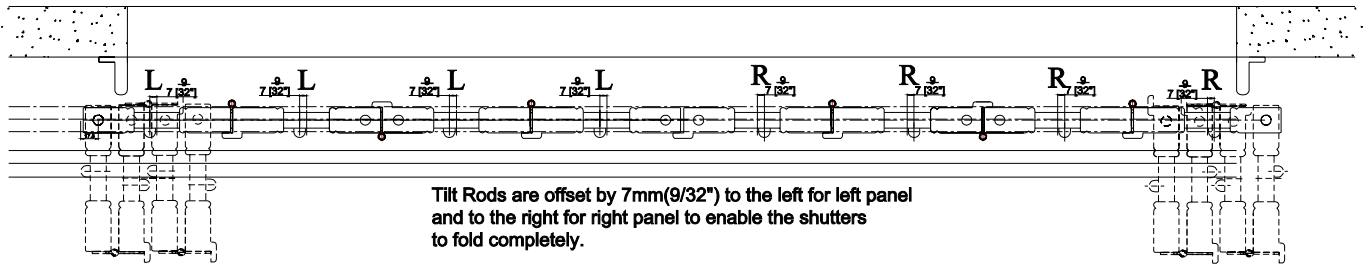
Note: Header will not pre-drill with holes for screws and wood plug for semi-inside/ inside mount;

## 180° Bi-Fold Track Shutters Hardware Box

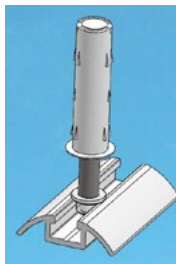
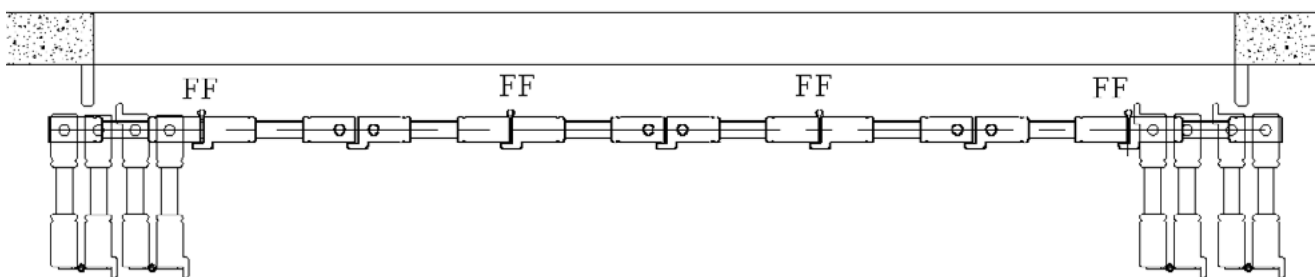
| PARTS                                  |
|--|
| Wrench                                 |
| Hinge Pin                              |
| Bottom Pivot Bracket                   |
| 38.1mm Screws For Bottom Pivot Bracket |
| 63.5mm Screws For Frame                |

# 90° MULTI-FOLD TRACK SHUTTERS

Panel Configuration: LLLL, RRRR, or LLLLRRRR



## 90° FLOATING PANELS

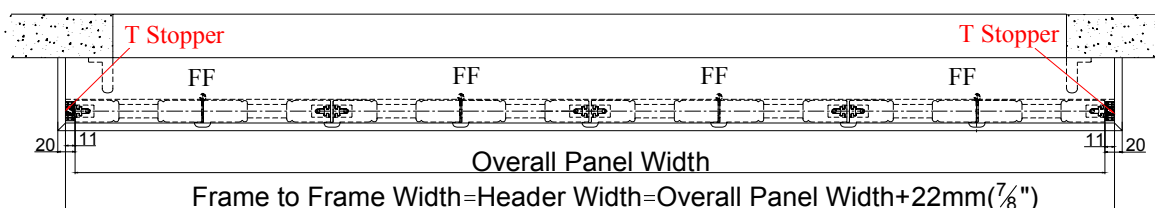


- Two or four panels can be hinged together, fold and slide to either direction.
- Application comes with wheel carrier, spring loaded guide and floor track.
- Can be used on a large window.

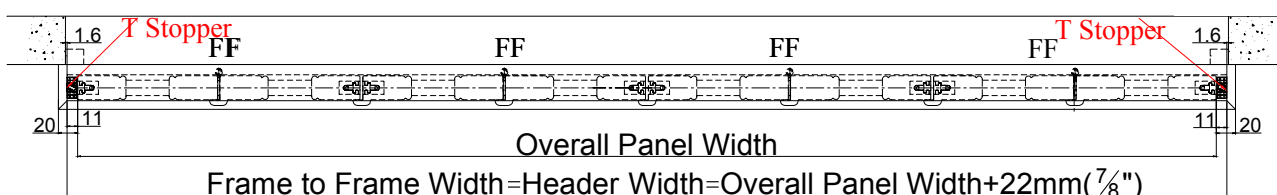
**Note:**

- For 90° Floating Panels outside mount/semi inside mount, T stopper will be supplied and the fascia return will protrude from the panel by approximately 19mm for each side.
- Bottom track is supplied for all Multi-Fold orders and must be requested for Bi-Fold.

### Outside Mount Top View



### Semi-Inside Mount Top View



| TYPE                                   |                   | HEADER DIMENSION | TOP FASCIA DIMENSION | LIGHT BLOCK STRIP DIMENSION |
|--|-------------------|------------------|----------------------|-----------------------------|
| Header, Top Fascia & Light Block Strip | Outside Mount     | 76mm             | 47mm                 | 38.1mm                      |
|  |                   | 89mm             |                      | 50.8mm                      |
|  | Inside Mount      | 76mm             |                      | 15.9mm x 19mm               |
|  | Semi-Inside Mount | 76mm             |                      | 15.9mm x 19mm               |

**Note: L shape light block strip needed for outside mount.**  
For inside/semi-inside mount, the light block will be pre-drilled with holes for screws.  
Header will not pre-drill with holes for screws.

**Ring Pull and Barrel Bolt (Flush Bolt):**

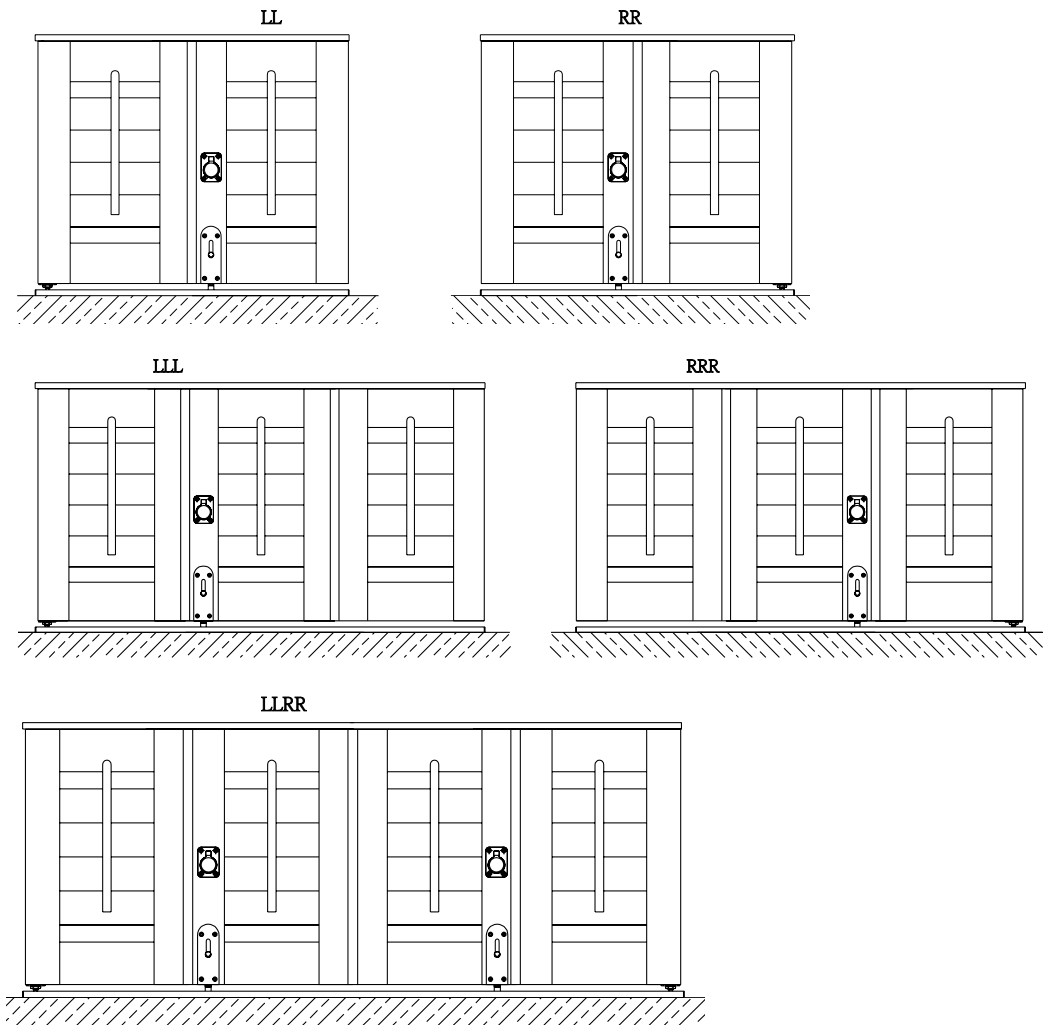
The ring pull will be provided as a default for both 90° and 180° Bi-Fold Track Shutters. Customer needs to specify ring pull location on the order. Ring pull location is measured from the floor to centre of the ring pull in vertical direction.

Ring pull colour will match the hinge colour.

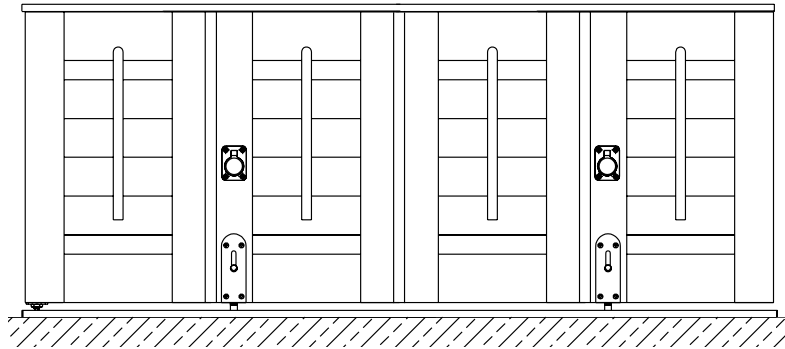
**Ring Pull Location For Floating Panels:**

- When floating panel config is in pairs, it will be split into halves, the left will be for LL and the right will be for RR. So the ring pull location for FF/FF and FF/FF/FF/FF will be the same as that for panel config LL/RR and LL/LL/RR/RR.
- When floating panel config is FF, the ring pull location will be the same as that of panel config LL.
- When floating panel config is singular, it will be split into 3 sections, the left and mid sections are for LL and the right section is for RR. So the ring pull location for FF/FF/FF/FF and FF/FF/FF/FF/FF will be the same as that of LL/LL/RR and LL/LL/LL/RR/RR.

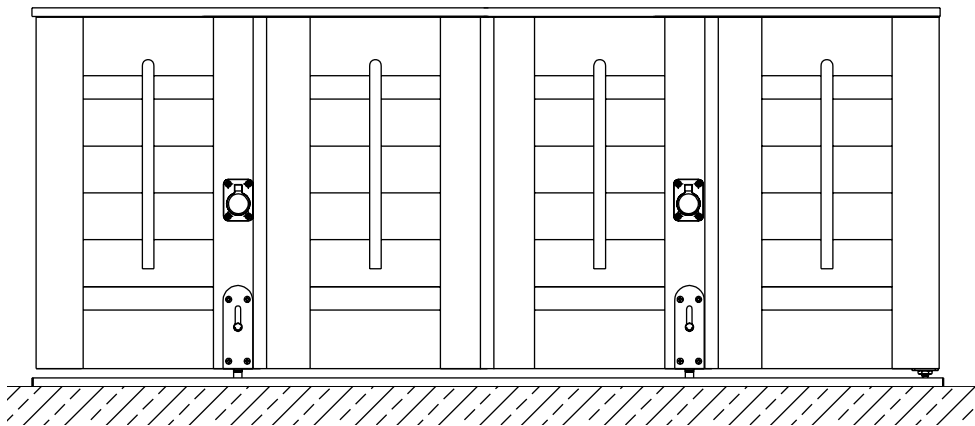
Please refer to below illustrations of ring pull and barrel bolt position:



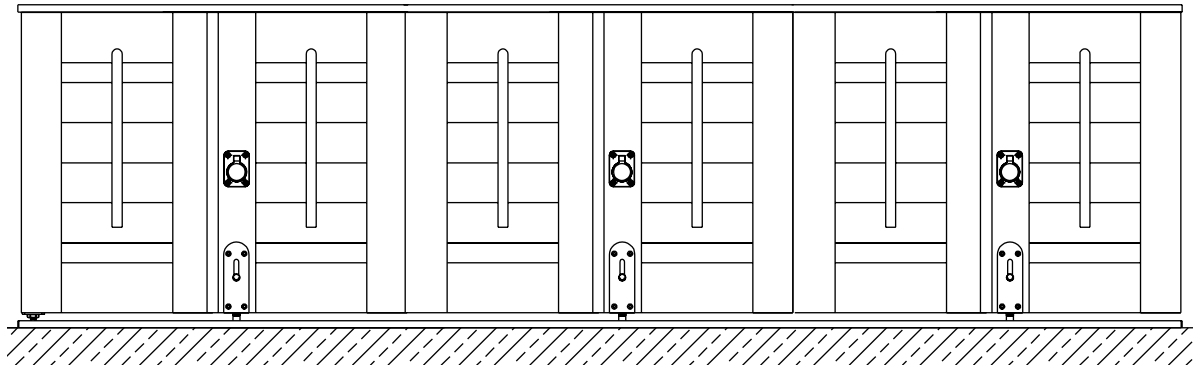
LLL



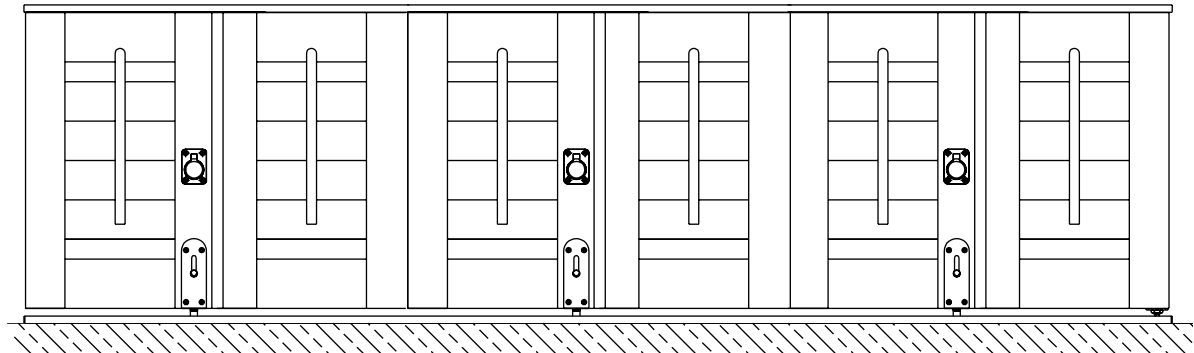
RRRR



LLLLL

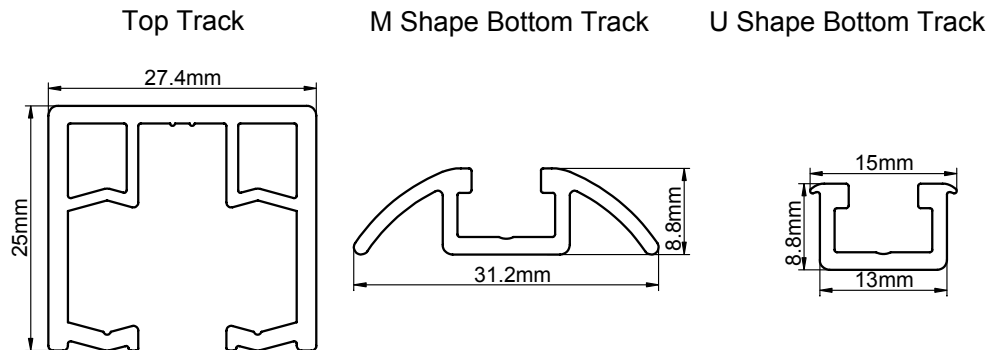


RRRRR

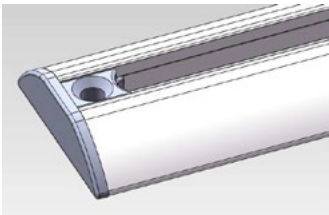




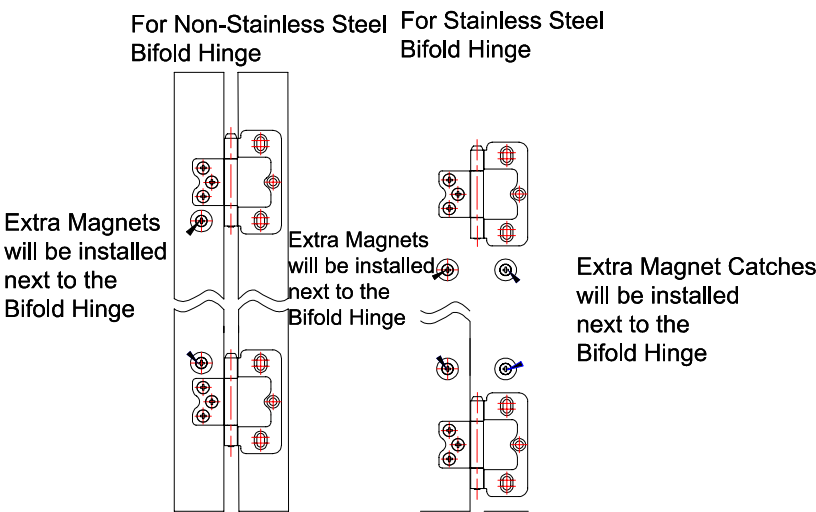
**Track Dimension:**



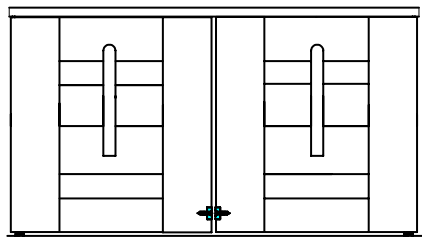
**End Caps will be supplied for M shape bottom track:**



**Extra magnets will supplied for Bi-Fold hinges:  
(only for the most top and bottom hinges)**



**Side Magnets:** Will be applied to the meeting stiles of LR panels



**Extra magnet and side magnet:** will be supplied for all materials except Java



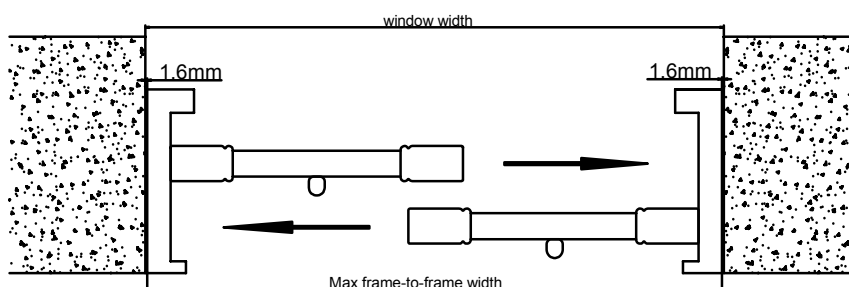
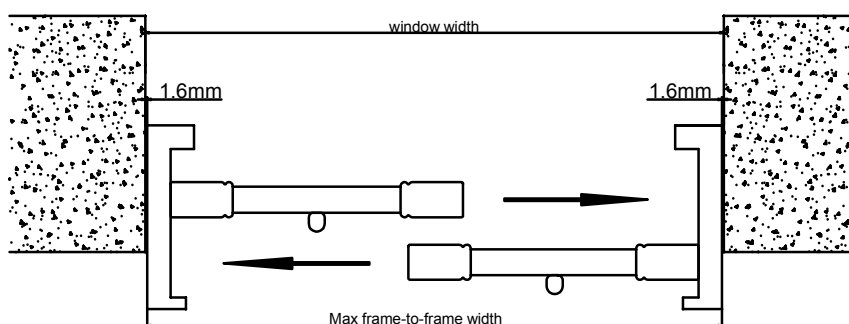
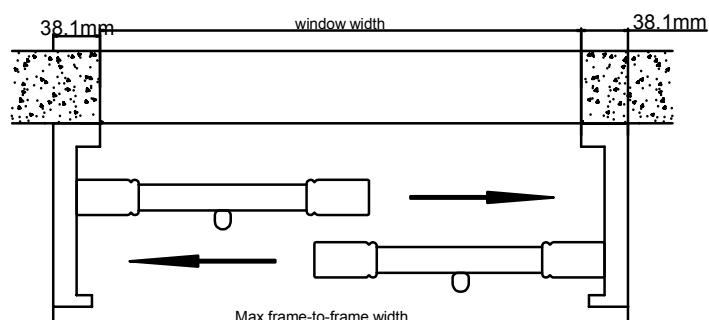
**90° Bi-Fold Track Shutters Hardware Box**

| PARTS                                  |
|--|
| Wrench                                 |
| Hinge Pin                              |
| Bottom Pivot Bracket                   |
| 38.1mm Screws For Bottom Pivot Bracket |
| 63.5mm Screws For Frame                |

# TRACK SHUTTERS - BY-PASS

| GUIDELINES AND SPECS  |  |
|-----------------------|--|
| Material              | Available for all shutters materials   |
| Stile                 | Only 50.8mm, 57.1mm D Mould stiles are available, 41.3mm D Mould stile only used for Hinged panels. Centre stile is not available.   |
| Panel Size Limitation | Same as the regular shutter spec.  |
| Size Definition       | <p><u>Outside Mount</u><br/>                     Max frame-to frame width: window width + 76mm<br/>                     Max frame-to-frame height: window height + 114mm</p> <p><u>Semi-Inside Mount</u><br/>                     Max frame-to frame width: window width + 3.2mm<br/>                     Max frame-to-frame height: window height + 35mm</p> <p><u>Inside Mount</u><br/>                     Max frame-to frame width: window width + 3.2mm<br/>                     Max frame-to-frame height: window height + 3.2mm</p> |

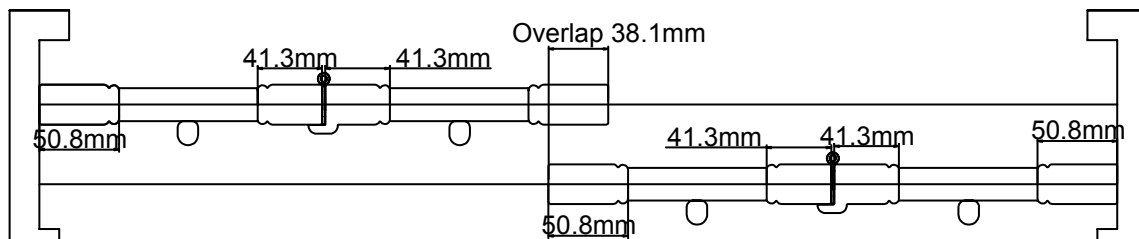
## Top View



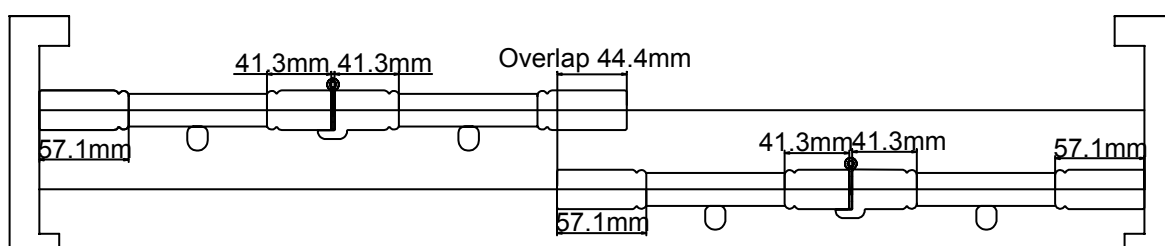
## Top View

### Hinged Panels (optional)

Woods



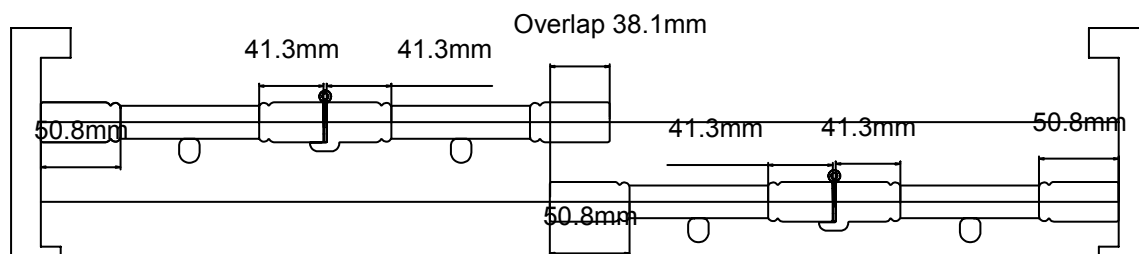
MDF



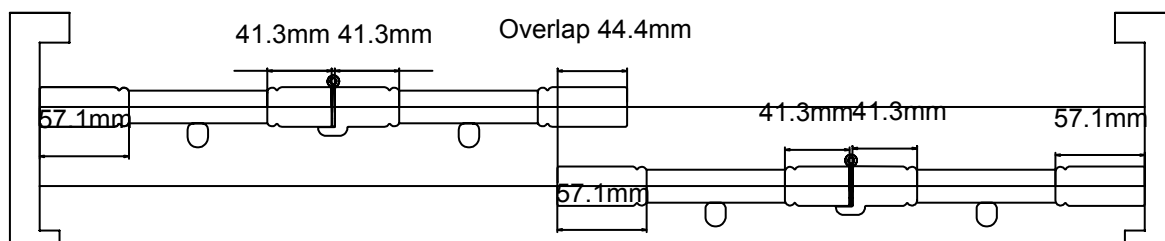
For shutters with 4 or more panels, please select "side open" or "centre open"

## Side Open

Woods

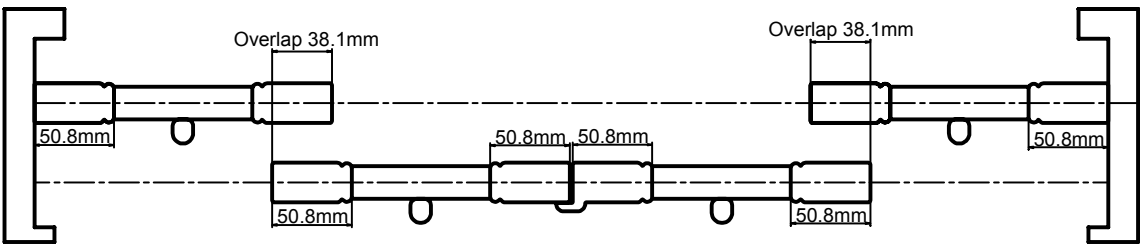


MDF

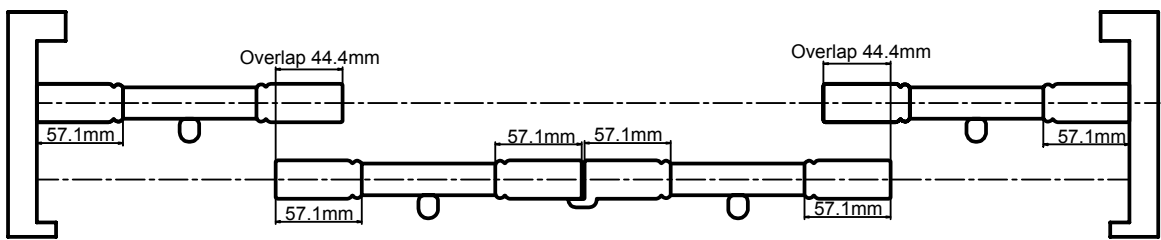


Centre Open

Woods

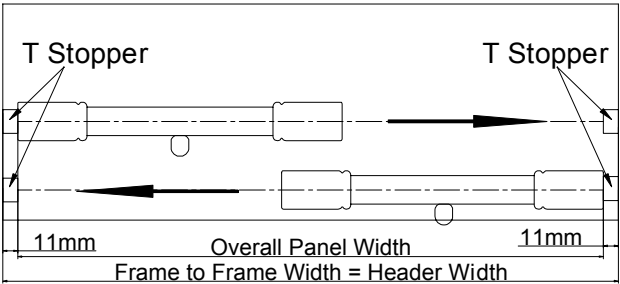


MDF

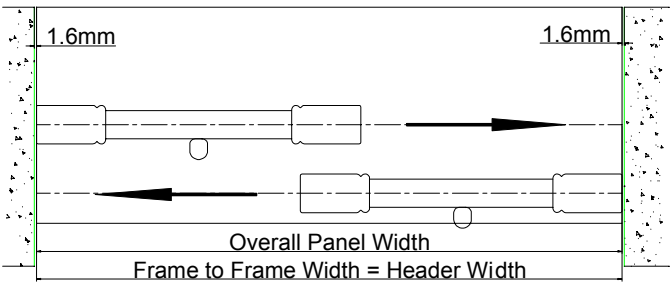


Size Definition For Bypass Shutter Without Side Boards

For Semi-IM/OM Without Sideboards



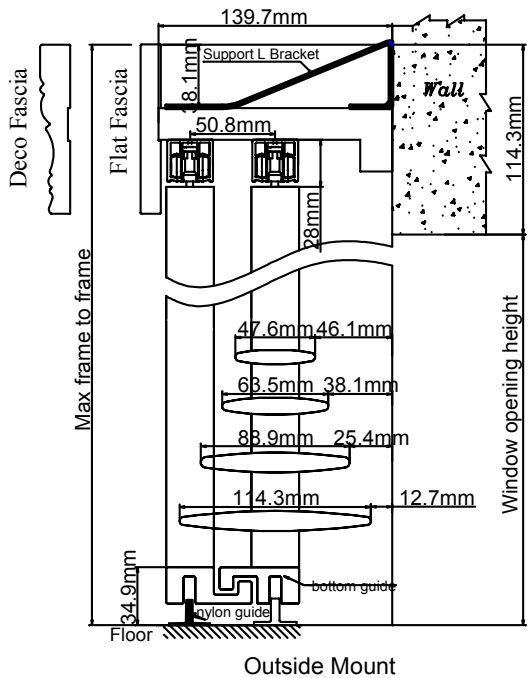
For IM Without Sideboards



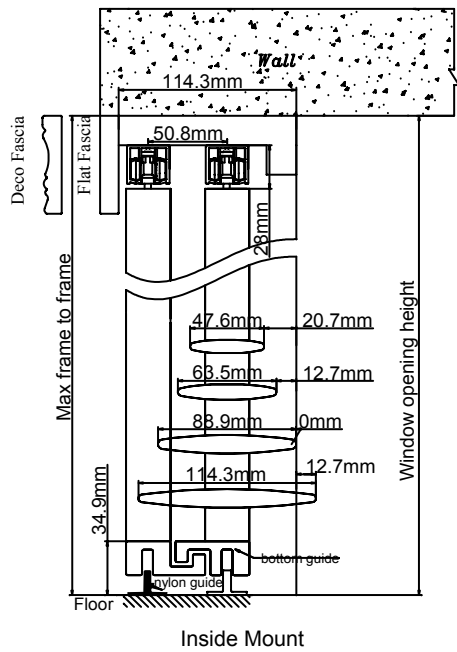
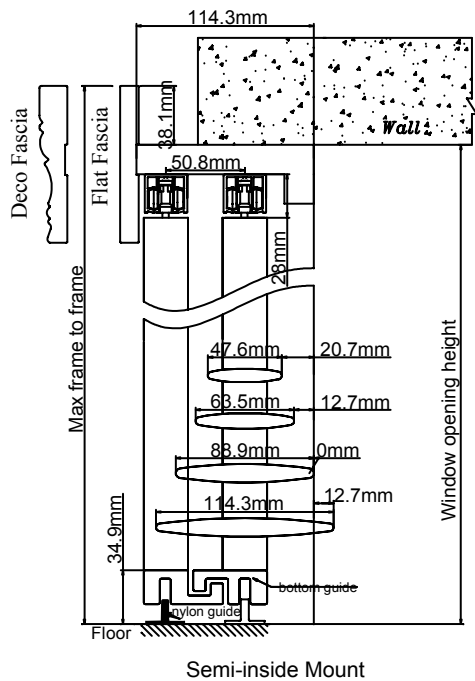
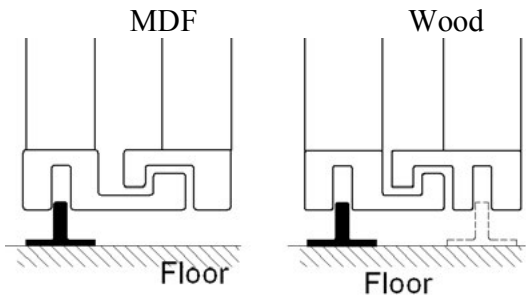
Note: For Semi-Inside/OM without side boards bypass, T Stopper will be supplied.

Mounting Options (Closed Bypass)

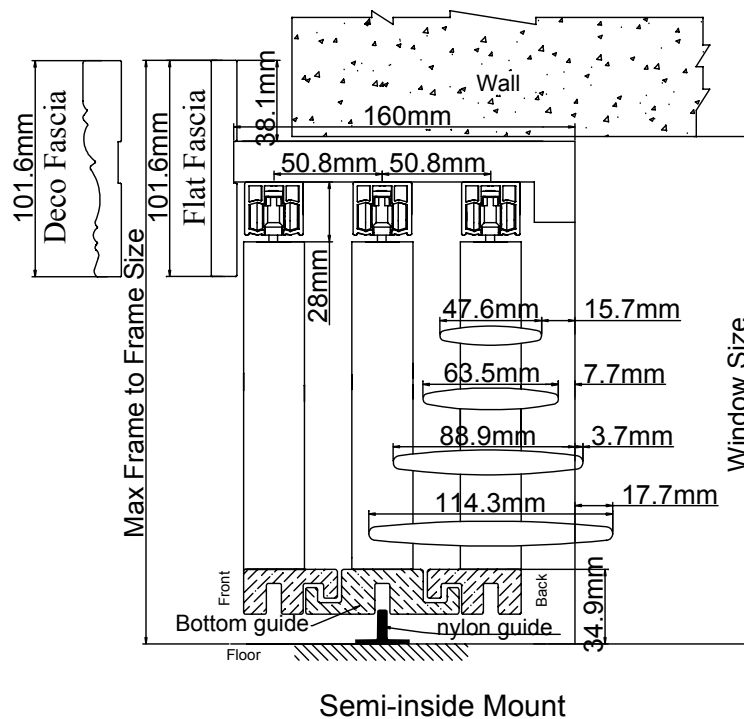
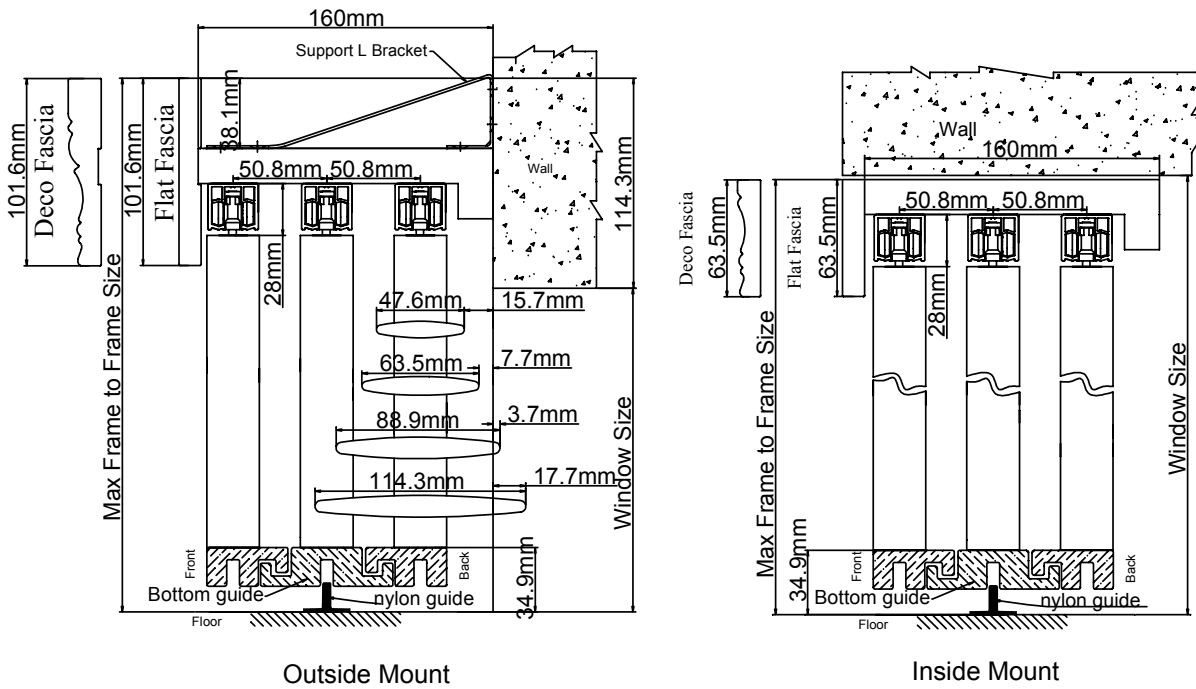
Side View



Bottom Guide

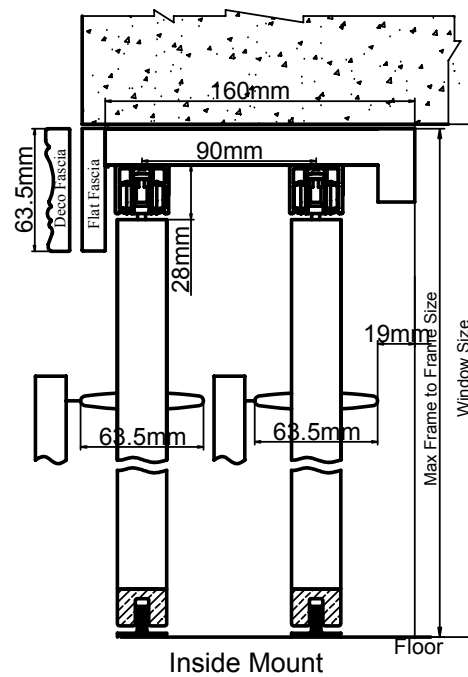
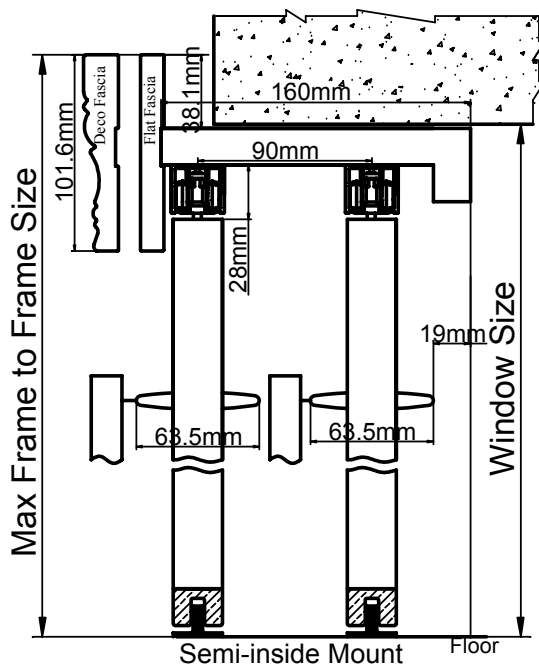
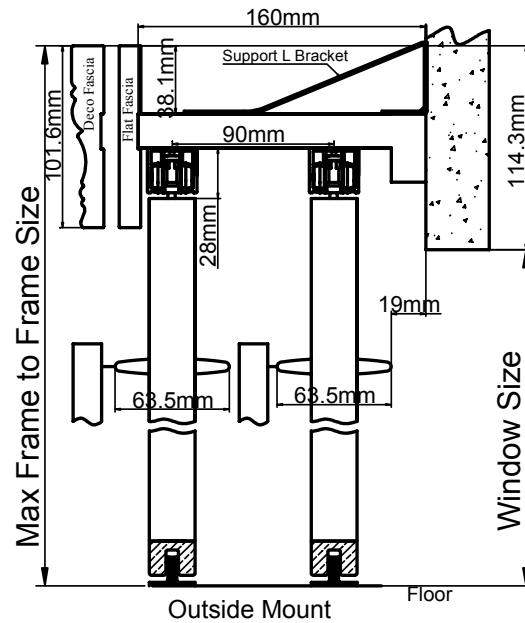


## Mounting Options (Closed Bypass with 3 Tracks): Woods Only



## Mounting Options (Opened Bypass):

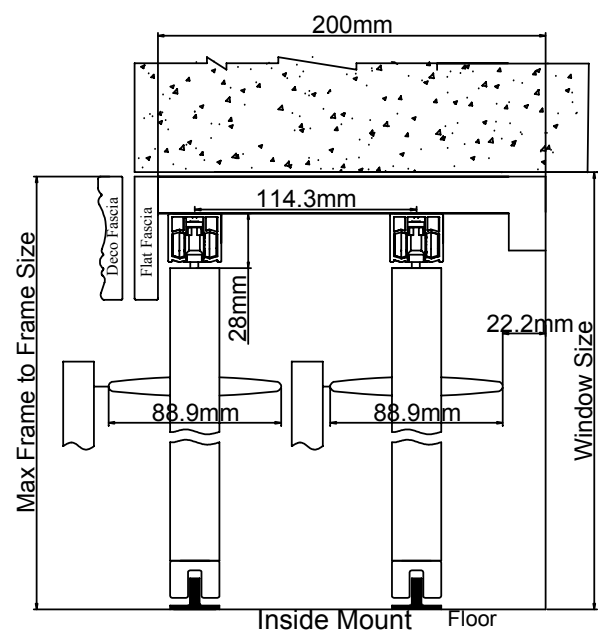
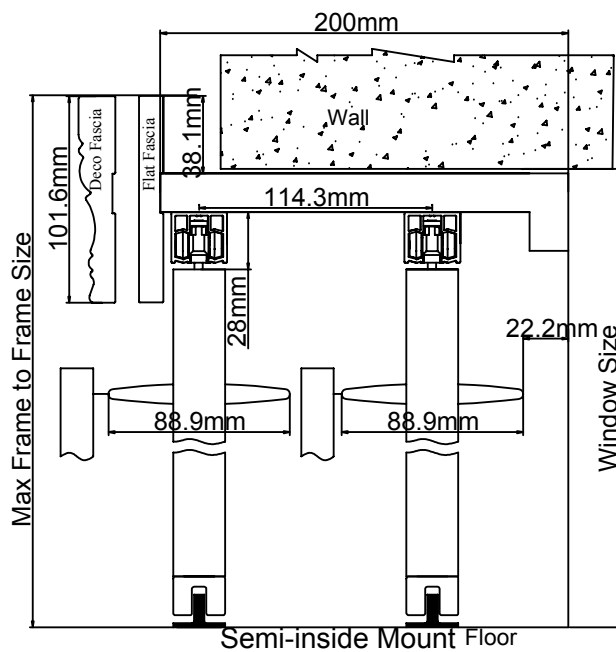
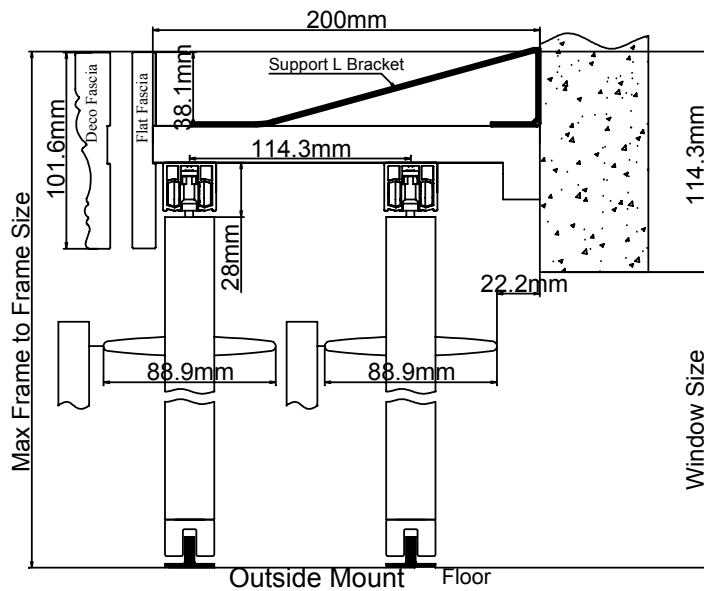
### 60/63mm Louvre



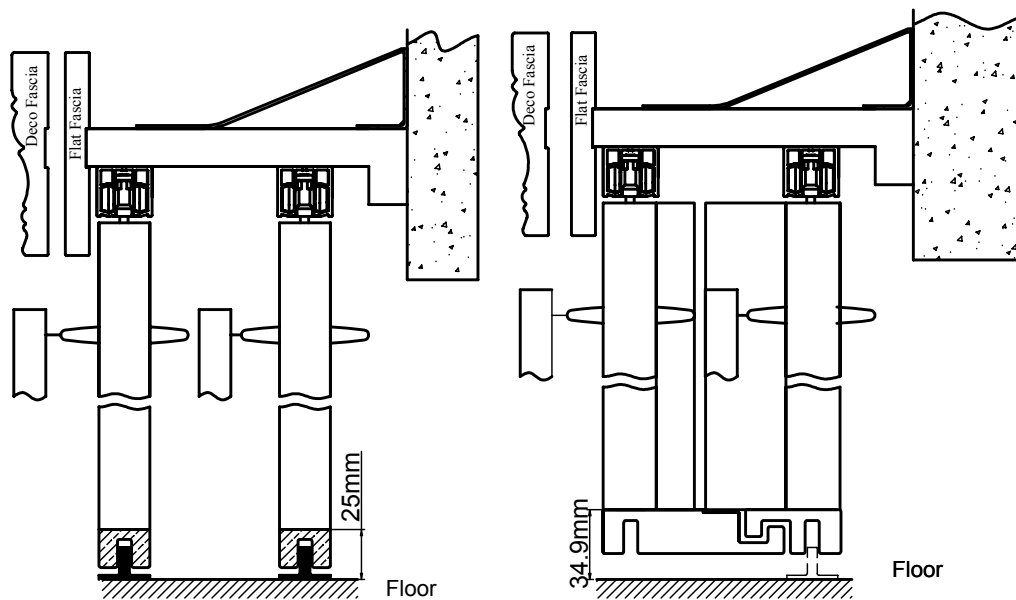


## Mounting Options (Opened Bypass):

### 76/84/89mm Louvre



## Bottom Guide for Open Bypass

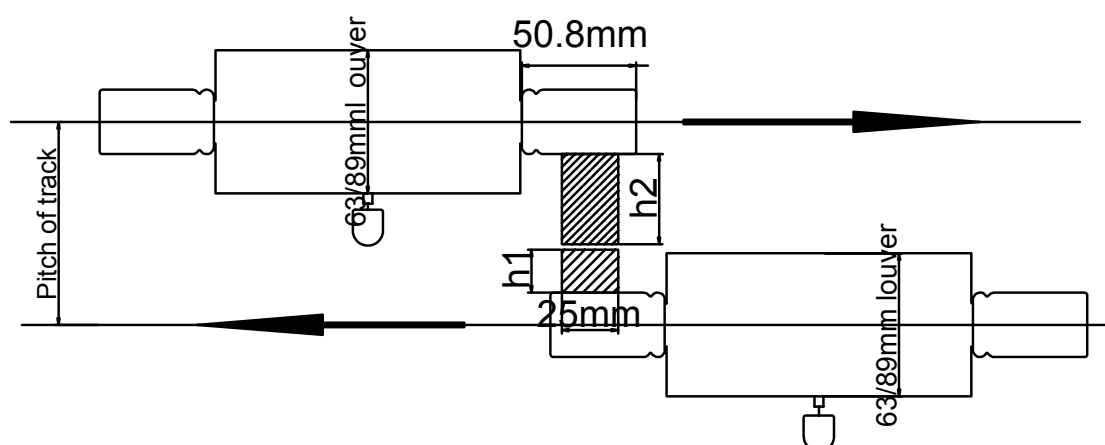


Default Bottom Guide

Optional Interlocking  
Bottom Guide

## Opened Bypass

### Top View



**Pitch of Track:**

| LOUVRE     | U SHAPE BOTTOM GUIDE |           | INTERLOCKING BOTTOM GUIDE |           |
|------------|----------------------|-----------|---------------------------|-----------|
|            | Standard Tilt Rod    | Easy Tilt | Standard Tilt Rod         | Easy Tilt |
| 60/63mm    | 90mm                 | 70mm      | 90mm                      | 90mm      |
| 76/84/89mm | 114mm                | 92mm      | 114mm                     | 114mm     |

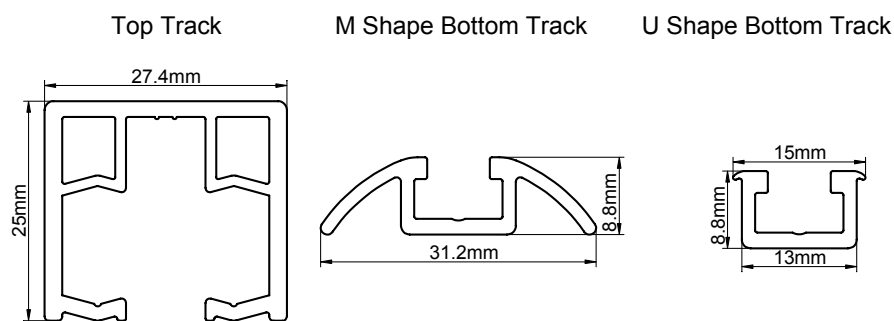
**Clearance:**

|                             | PROGRAM | TOP FRAME SIZE (MM) | LOUVRE SIZE (MM) | CLEARANCE (MM) |
|-----------------------------|---------|---------------------|------------------|----------------|
| Close Bypass                | Java    | 139.7               | 47.6             | 39.7           |
|                             |         |                     | 63.5             | 32             |
|                             |         |                     | 88.9             | 19.1           |
|                             |         |                     | 114.3            | 6.3            |
|                             |         | 114.3               | 47.6             | 14.3           |
|                             |         |                     | 63.5             | 6.4            |
|                             |         |                     | 88.9             | -6.4           |
|                             |         |                     | 114.3            | -19.1          |
|                             | Others  | 139.7               | 47.6             | 42.9           |
|                             |         |                     | 63.5             | 34.9           |
|                             |         |                     | 88.9             | 22.2           |
|                             |         |                     | 114.3            | 9.5            |
|                             |         | 114.3               | 47.6             | 17.5           |
|                             |         |                     | 63.5             | 9.5            |
|                             |         |                     | 88.9             | -3.2           |
|                             |         |                     | 114.3            | -15.9          |
|                             | PROGRAM | TOP FRAME SIZE (MM) | LOUVRE SIZE (MM) | CLEARANCE (MM) |
| Closed Bypass With 3 Tracks | Java    | 160                 | 47.6             | 9.2            |
|                             |         |                     | 63.5             | 1.3            |
|                             |         |                     | 88.9             | -11.5          |
|                             |         |                     | 114.3            | -24.2          |
|                             | Others  |                     | 47.6             | 12.4           |
|                             |         |                     | 63.5             | 4.4            |
|                             |         |                     | 88.9             | -8.3           |
|                             |         |                     | 114.3            | -21.0          |
|                             | PROGRAM | TOP FRAME SIZE (MM) | LOUVRE SIZE (MM) | CLEARANCE (MM) |
| Open Bypass                 | Java    | 160                 | 63.5             | 12.9           |
|                             |         | 200                 | 88.9             | 15.9           |
|                             | Others  | 160                 | 63.5             | 16.0           |
|                             |         | 200                 | 88.9             | 19.0           |

### Light Block Thickness of panels:

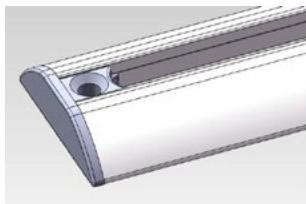
| LOUVRE     |    | U SHAPE BOTTOM GUIDE  |                       | INTERLOCKING BOTTOM GUIDE |                |
|------------|----|-----------------------|-----------------------|---------------------------|----------------|
|            |    | Standard Tilt Rod     | Easy Tilt             | Standard Tilt Rod         | Easy Tilt      |
|            |    | Woods, Antigua & Java | Woods, Antigua & Java | Woods, Antigua & Java     | Antigua & Java |
| 60/63mm    | h1 | 19mm                  | 19mm                  | 19mm                      | 40mm           |
|            | h2 | 40mm                  | 19mm                  | 40mm                      | 19mm           |
| 76/84/89mm | h1 | 30mm                  | 30mm                  | 30mm                      | 50mm           |
|            | h2 | 50mm                  | 30mm                  | 50mm                      | 30mm           |

### Track Dimension:

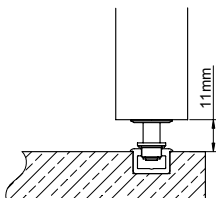


**Note:** If applied to the U shape bottom track, the bottom board is required otherwise the customer will require a slot in the floor to install the bottom track. The bottom board size will match the header size.

### End Caps Will Be Supplied For M Shape Bottom Track:



**Deduction For U Shape Bottom Track:** Only available for recess.



## Track Shutters Framing Materials:

| FRAMING  | SIZE  |                            |                  |              | PC(S) |
|--|---|----------------------------|------------------|--------------|-------|
| L Shape Header                                 | Header (Closed Bypass)  | Header (Opened Bypass)     | Supporting Strip |              | 1 pc  |
| (2 In 1)                                       | 19mm x 140mm (Default for Outside Mount; Optional for Semi-Inside and Inside Mount) | 19mm x 160mm (63mm Louvre) | 19mm x 19mm      |              |       |
| Header with supporting strip                   | 19mm x 114mm (Default for Semi-Inside and Inside Mount; Optional for outside Mount) | 19mm x 200mm (89mm Louvre) |                  |              |       |
|  | Custom ≤ 200mm  | Custom ≤ 200mm             |                  |              |       |
| U Shape Side Frame                             | Side Frame (Closed Bypass)  | Side Frame (Opened Bypass) | Supporting Strip | Side Fascia  | 2 pc  |
| (3 in 1)                                       | 19mm x 150mm (Default for Outside Mount; Optional for Semi-Inside and Inside Mount) | 19mm x 168mm (63mm Louvre) | 19mm x 19mm      | 9.6mm x 32mm |       |
| Side Frame With Supporting Strip & Side Fascia | 19mm x 124mm (Default for Semi-Inside and Inside Mount; Optional for outside Mount) | 19mm x 210mm (89mm Louvre) |                  |              |       |
|  | Custom ≤ 200mm  | Custom ≤ 200mm             |                  |              |       |
| Top Fascia (Plain/Deco)                        | 101.6mm (Semi-inside and Outside Mount)   |                            |                  |              | 1 pc  |
|  | 12.7mm x 63mm Inside Mount (Deco)   |                            |                  |              |       |
|  | 12mm x 62mm (Inside Mount (Plain)   |                            |                  |              |       |
| Top Fascia Return                              | 101.6mm (Semi-inside and Outside Mount)   |                            |                  |              | 2 pc  |
|  | N/A (Inside Mount)  |                            |                  |              |       |

## Hardware Box:

| PARTS  |
|--|
| Wrench   |
| Nylon Guide                                      |
| 19mm Screws For Nylon Guide                      |
| Support L Bracket (Based On The Length of Header |
| 63mm Screws For Support L Bracket                |
| 19mm Screws For Support L Bracket                |