

GENOA™ COLLECTION ALBARO™ RANGE TECHNICAL SPECIFICATIONS



2022 Version 1.5



ALBARO RANGE CONTENTS

To go to required section click [coloured headings](#) below

Section 1	
Features and benefits	3

Section 2	
Components and accessories	4
Headrails	6
Valances	
Slat sizes	
Bottom rail	
Privacy slat	7
Centre Slot	
Toggle	
Cord consolidator	
Installation bracket	
Valance Installation parts	

Section 3	
General specification	9
Mounting type	
Size limit	
Control Option	
Valance and return size	10
SmartLift Wand Lengths	11
Ladder cord schedule	
Cord length	
Cutout rules	13
Albaro colours	14
Cloth tape selection	
Stacking Heights	15

Section 4	
Warranty	16



The Albaro™ range of venetian blinds are tailored towards a modern and also a more traditional interior.

A faux wood range that has all the style of real wood venetians, but is made from a practical and man-made polyvinyl material that stands up to the daily wear and tear of a family home. Choose from two different slat sizes, 10 solid painted and 10 wood print colours.

- Hard-wearing, durable and easy to clean
- A choice of six cloth tape colours
- Available with two stylish valance options and a courbe toggle
- Ideal for large window expanses, maximum blind width of over 2.4

THE MADE-TO-MEASURE GENOA™ COLLECTION FROM S:CRAFT FEATURING ALBARO™

The Genoa collection is the most comprehensive blind range in the UK offering a multitude of configurations and finishing options, featuring Serino™; a real wood range crafted from paulownia and Albaro™, a faux wood polyvinyl range of venetian blinds. S:CRAFT's Albaro range of blinds are of exceptional build quality and give a superior solution for any type of window.

Features Include:

● Complete Privacy

- Tightest slat closure on the market for increased black-out
- No large punched holes in slats reducing light bleed and increasing privacy

● Industry Leading Functionality

- Advanced easy-lock mechanism
- Optional SmartRelease for smooth and effortless opening in one pull
- A single headrail can be used with a number of blinds allowing for all cords to be consolidated at either end of the blind
- Ability to cut-out the blind around door or window furniture
- Hold down brackets for face fixing to doors
- Trapezoid bottom rail eliminates rocking and damage to window sill
- Slats are made of a lightweight material with a beautiful grain
- Easy to use, clean and maintain.

● Exceptional Options

- Optional SmartLift™ (cordless) or corded lift with superior lift and drop
- 50mm and 63mm slat sizes
- 20 colour finishes
- 6 plain fabric cloth tape colours
- PVC headrail with a choice of 16 coordinated headrails colours
- High quality valance options

● Child Safe

- Child safety cord consolidator fitted as standard reducing the risk of potential strangulation
- +/- 6mm tolerance on drop
- Window spans of up to 2.4 meters wide on a single blind can be covered in a paint finish
- Tapes, strings and cords consistently placed same distance from end of slat
- Hardwearing, durable and easy to clean PVC

* Only available on New Privacy Slat not Centre Slat

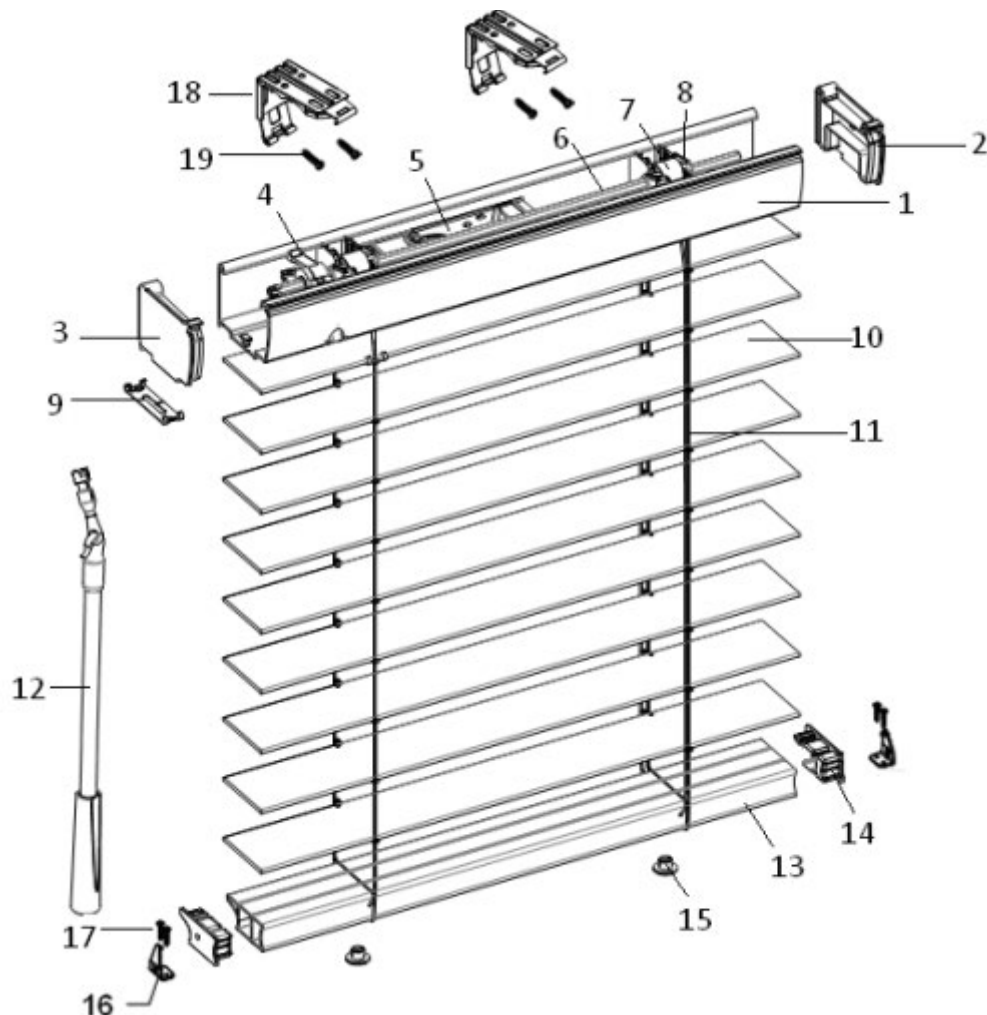
2. COMPONENTS AND ACCESSORIES

[BACK TO MENU](#)

SPEC04-2020

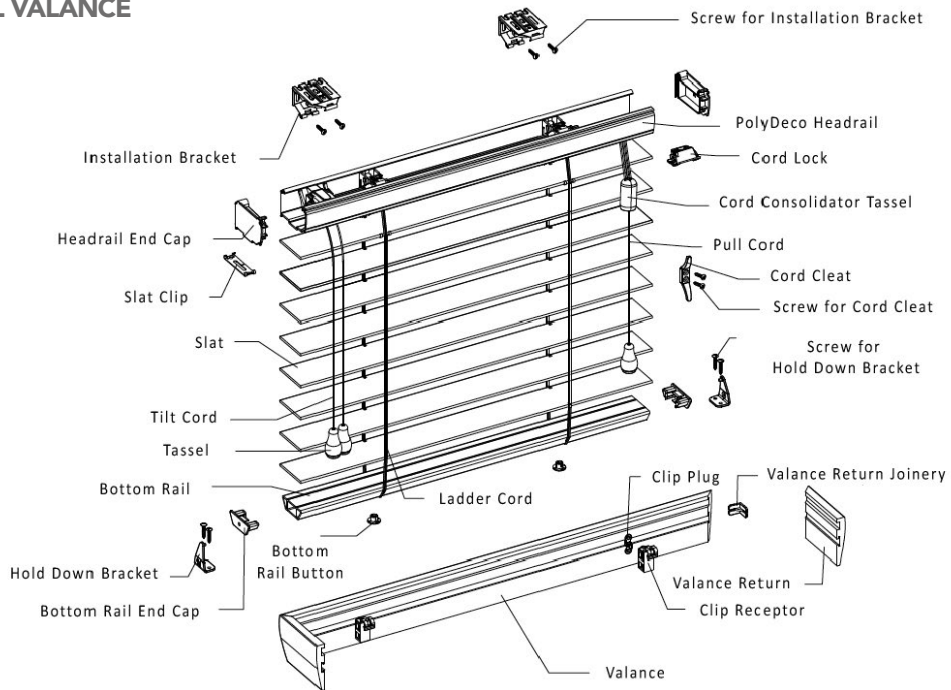
SMARTLIFT™ (CORDLESS) LIFT

PVC HEADRAIL IS DEFAULT (VALANCES ARE OPTIONAL EXTRA)

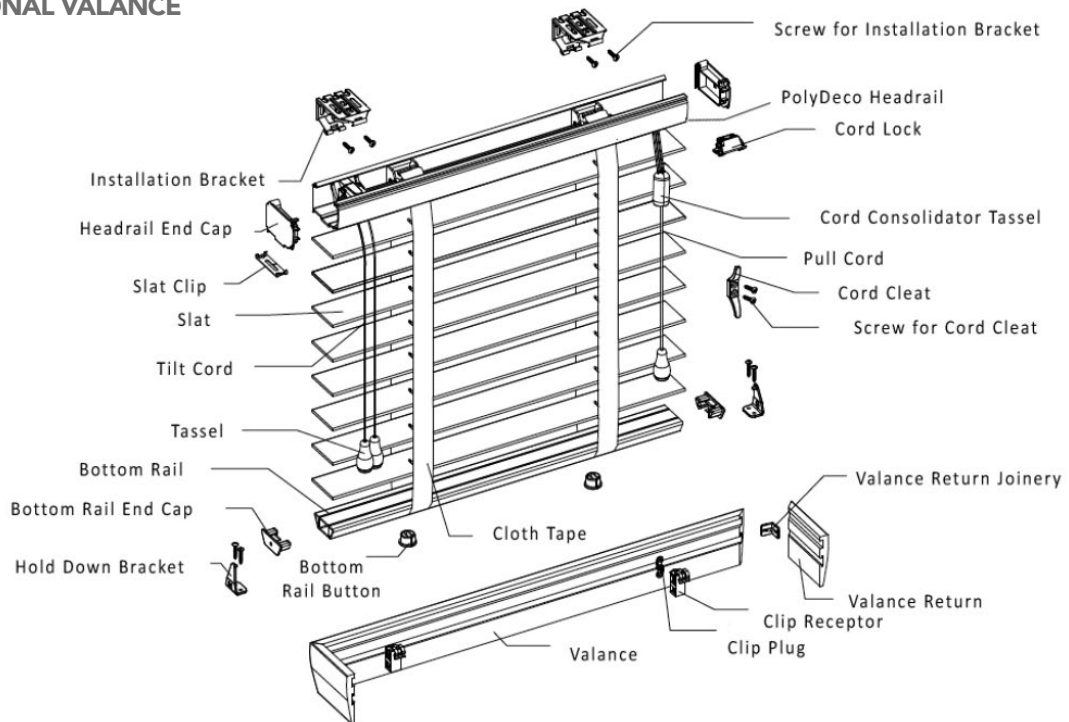


No	Description	No	Description
1	PVC Headrail	10	Slat
2	Headrail end cap (right)	11	Ladder cord
3	Headrail end cap (left)	12	Wand
4	Wand tilter	13	Bottom rail
5	Spring box	14	Bottom rail end cap
6	Tilt rod	15	Bottom rail button
7	Drum	16	Hold down bracket
8	Drum support	17	Screw for hold down bracket
9	Slat clip (for spring box system)	18	Installation bracket
		19	Screw for installation bracket

SMART PRIVACY WITH LADDER CORD OPTIONAL VALANCE



CENTRE SLOT WITH CLOTH TAPE OPTIONAL VALANCE



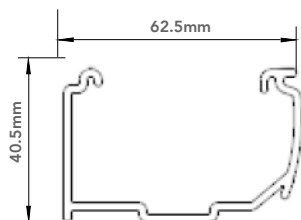
2. COMPONENTS AND ACCESSORIES

[BACK TO MENU](#)

SPEC06-2020

STANDARD HEADRAIL

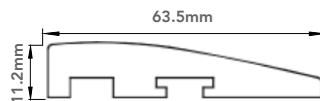
PVC headrail in 16 colours, colour coordinated with blind colours



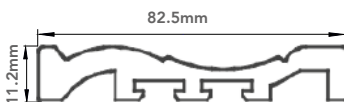
For 50.8mm & 63.5mm slat

OPTIONAL VALANCE WITH SURCHARGE

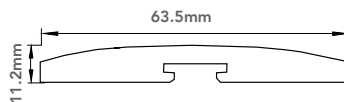
Ramp 63.5mm



Designer Crown 82.5mm

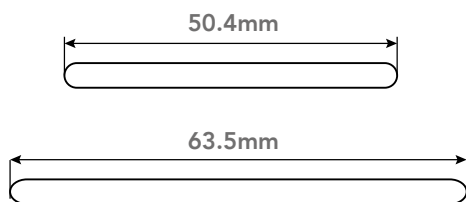


Modern Curved 63.5mm



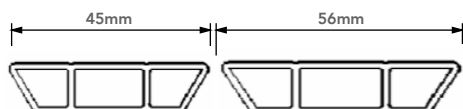
SLAT SIZES

50.8mm & 63.5mm



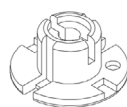
BOTTOM RAIL (CORDED)

Incorporate a flush bottom rail cap to minimize gap at the bottom of the blind for recess mount and dent free for window casement.



BOTTOM RAIL BUTTON

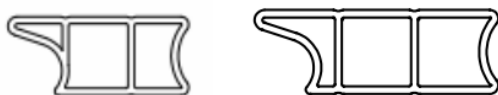
Bottom Rail Button for ladder cord blinds



Bottom Rail Button for cloth tape blinds



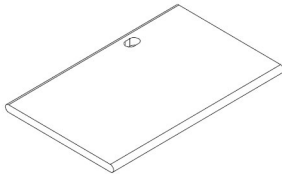
BOTTOM RAIL (SMARTLIFT)



50mm

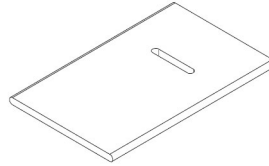
63mm

PRIVACY



For ladder cord
(default)

CENTRE SLOT



For cloth tape only

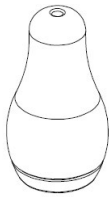
NB. For privacy blinds, the alignment of the slats, when fitting next to adjacent blinds cannot be guaranteed in the specs under general specification/ mounting type and size definition.

Please note: a known characteristic of privacy blinds is that the slats can have an irregular bunching at the edges, this is caused when the blind is raised/lowered regularly and is visible at the edges. To correct this, simply lower the blind to its full drop, starting from the outside edge, working from the top-down, run your hands firmly down the edges of each slat end to align them.

Dress the blinds upon installation to create a neat and uniform finish, if the blinds are raised and lowered frequently after that, the slats may not maintain their dressed position.

TOGGLES

Made of high quality extruded plastic



Courbe
(37mm)

PVC Toggle

CORD CONSOLIDATOR

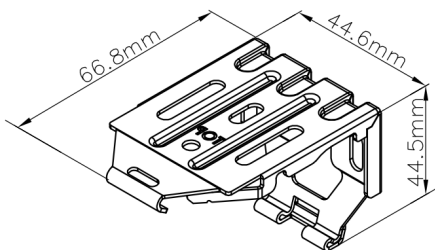
Safety breakaway toggle in cylinder shape with a round head.



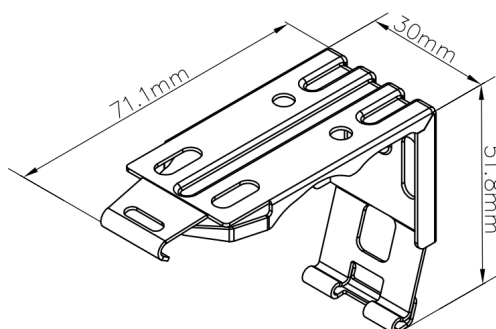
Safety Consolidator
(38mm)

INSTALLATION BRACKET

Corded

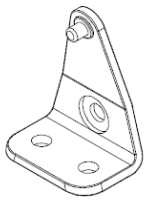


SmartLift (cordless)

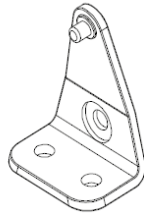


HOLD DOWN BRACKET

Supplied with each blind.



For 50.4mm slat



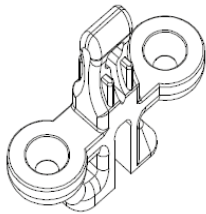
For 63mm slat

CORD CLEAT

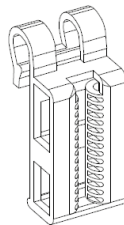
Two supplied with each blind.



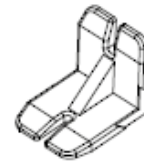
VALANCE INSTALLATION PARTS



Valance Clip (plug)

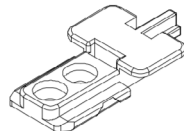
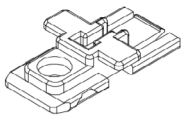


Valance Clip (receptor)



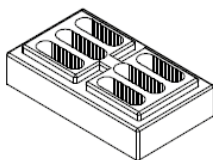
Valance Return Joiner

VALANCE CONNECTOR



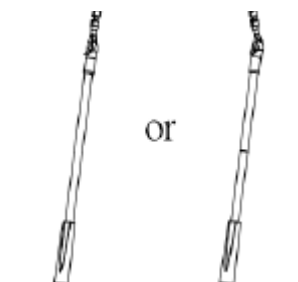
Supplied for connecting spliced valances.

OPTIONAL PART - SPACER BLOCK



NB. First spacer block will extend the bracket out by 10mm, two spacer blocks will extend by 18mm.

SMARTLIFT (CORDLESS) WAND



MOUNTING TYPE AND SIZE DEFINITION

	Recess Size / Inside Mount (IM)	Blind Size / Outside Mount (OM)
Mounting Position	Blind fits within window opening	Blind overlaps window opening
Order Size	Window opening size: Provide the smallest measurement from the top, middle and bottom measurement. Top measurement is critical because the headrail must fit. Measure the height left, center and right and provide the biggest height.	Net size: Measure the desired width and height. To minimize light leakage, the blind should overlap the window opening at least 50mm on each side and at the bottom.
Finished Blind Size	Width = Order width - 10mm Drop = Order Height - 2mm	Width = Order Width Drop = Order Height

*Finished blind width is equal to slat length; finished blind drop is measured from top edge of headrail to bottom edge of bottom rail with slats in closed position when blind is fully released.

Tolerance on width: $\pm 2\text{mm}$;
 Tolerance on drop: 0~6.4mm.

*Above standard deductions will be made by the factory

SIZE LIMIT - CORDED

Size	Blind Type	Width			Maximum	Max SQM
		Minimum (no cord lock)	Minimum (with cord lock)			
			RR/LL	RL/LR		
Width	Single Blind	165mm	459mm	305mm	2438mm	Single: 5.57m ² 2 on 1: 8.36m ²
	Multiple Blind - 2 on 1 on one headrail (not available for SmartLift)	n/a	924mm	616mm	2743mm	
Drop		254mm			3048mm	

NB. The above chart does not mean that a blind can be ordered in maximum width and maximum height.

For blinds with a width $165\text{mm} \leq X < 305\text{mm}$, the max. height is 2438mm.

CONTROL OPTION

Default	Optional
Cord tilt left (L), pull cord right (R)	Cord tilt right (R), pull cord left (L)
	Cord tilt right (R), pull cord right (R)
	Cord tilt left (L), pull cord left (L)

Tilter will be at the outer end when both controls are at the same side. Blinds with width between 305mm and 457mm must have split control, one on left and one on right.

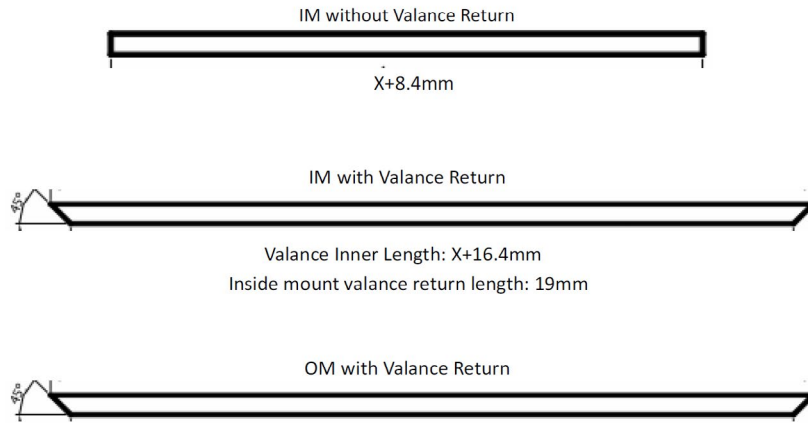
SIZE LIMIT - SMARTLIFT™ (CORDLESS)

Single Blind	Min.	Max.	Max SQFT
Blind Width	381mm	2438mm	4.46SQM
Blind Drop	483mm	2438mm	

©S:CRAFT Copyright in this material belongs to S:CRAFT and copying or reproduction in whole or in part is strictly prohibited. We reserve the right to alter specifications without prior notice.

VALANCE AND RETURN SIZE

- No valance return for inside mount - supplied valance will be butt cut.
- Short returns supplied, if returns are required during an inside mount.
- Outside mount blind comes with valance returns, if requested.



NB. Outside mount valance return length: 87mm for both 50mm and 63mm slats.

Note: If ordering with spacer block, please adjust valance return length (inner length) according to actual needs. The thickness is 10mm for 1 set spacer block and 18mm for 2 sets.

LADDER CORD SCHEDULE

Blind Width	Ladder Cord Schedule			
	50mm / 63mm Slat			
	Smart Privacy		Centre Slot	
	Ladder	Cord	Ladder	Cord
$165\text{mm} \leq W \leq 305\text{mm}$	2	4	2	2
$305\text{mm} \leq W \leq 609\text{mm}$	2	4	2	2
$609\text{mm} < W \leq 939\text{mm}$	3	5	3	2
$939\text{mm} < W \leq 1270\text{mm}$	4	4	4	4
$1270\text{mm} < W \leq 1600\text{mm}$	5	5	5	3
$1600\text{mm} < W \leq 1930\text{mm}$	6	6	6	4
$1930\text{mm} < W \leq 2260\text{mm}$	7	6	7	5
$2260\text{mm} < W \leq 2438\text{mm}$	8	6	8	6

CORD LENGTH

Installation Height (From floor to the top edge of the blinds)	Blind Height (Y)	Cord Length (Y2)
The cord length for orders without specifying installation height	$254\text{mm} \leq Y \leq 762\text{mm}$	506mm
	$762\text{mm} < Y \leq 1498\text{mm}$	2/3Y
	$1498\text{mm} < Y \leq 2501\text{mm}$	1000mm
	$2501\text{mm} < Y \leq 3048\text{mm}$	Y-1500mm
The cord length for orders with installation height specified	Installation Height $\leq 2008\text{mm}$	508mm
	$2008\text{mm} < \text{Installation Height}$	Installation Height-1500mm

*The cord length for both Tilt cord and Pull cord will be the same unless otherwise specified.

* Custom Cord length is available. The Min Custom Cord length is 508mm. (Notes: The cord length will be defaulted at 508mm when the Custom Cord length is less than 508mm.)

*If specifying the cord length, please note the regulation required "In the fully lowered position, the distance from the floor to the bottom of the pull cords shall be at least 1.5m".

Blind height (Y): Blind height is measured from top edge of headrail to bottom edge of bottom rail with slats in fully closed position.

Tilt cord & Pull cord length (Y2): Size measured from top of headrail to bottom of tassel when the blind is in fully closed position.

SMARTLIFT™ (CORDLESS) WAND LENGTHS

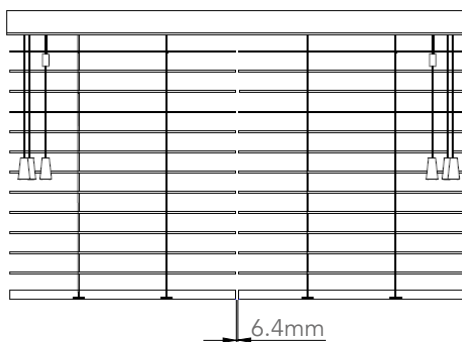
Drop from	Drop to	Length
0mm	914mm	298mm
915mm	1219mm	451mm
1220mm	1829mm	756mm
1930mm	2438mm	972mm

Please note: Wand control can be left or right aligned

Tolerance $\pm 25\text{mm}$

MULTIPLE BLINDS ON ONE HEADRAIL & COMMON VALANCE

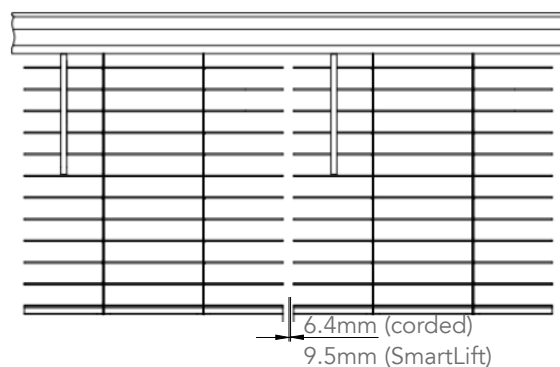
2 on 1 headrail



- Alignment of slats is not guaranteed for multiple blinds on one headrail.

Please note: multiple blinds on a single headrail is not available for SmartLift (cordless lift option).

Common Valance



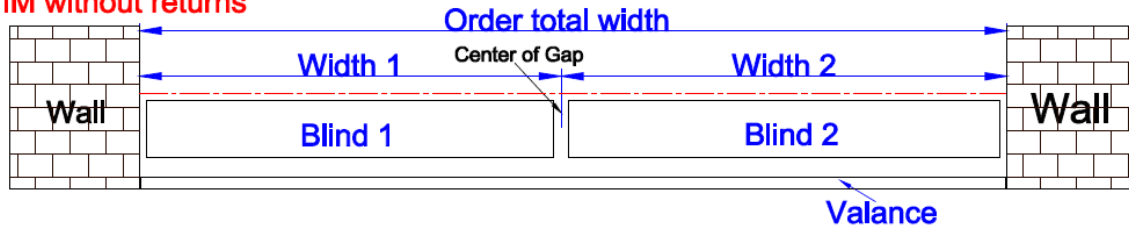
- Common valance is used for side by side blinds sharing one valance.
- Alignment of slats is not guaranteed for the side by side blinds.
- Valance will be spliced if length exceeds 2438mm. Valance connector will be supplied.
- Minimum gap size between two blinds is 6.4mm for corded and 9.5mm for SmartLift (cordless)

STANDARD COMMON VALANCE SIZE

CORDED ALBARO: For IM without valance return, the standard common valance size = window opening size-1.6mm or the standard common valance size = left blind width +right blind width +middle blind width +gap width*gap qty+8.4mm

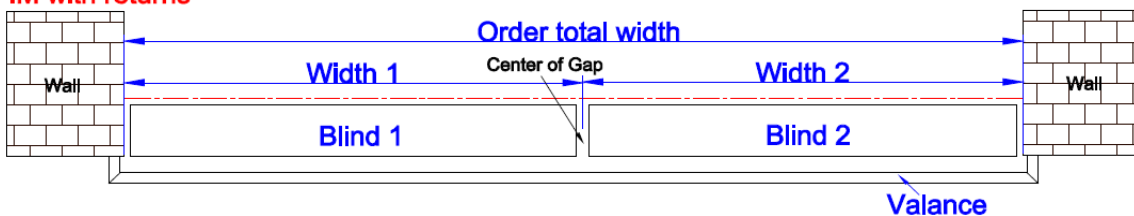
SMARTLIFT ALBARO: For IM without valance return, the standard common valance size = window opening size-3.2mm or the standard common valance size = left blind width +right blind width +middle blind width +gap width*gap qty+6.8mm

IM without returns

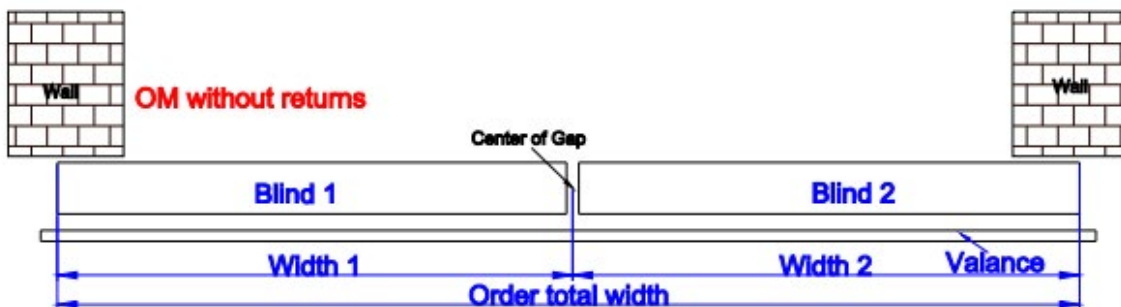


For IM with valance return, the standard common valance size = window opening size+6.4mm or the standard common valance size = left blind width +right blind width +middle blind width +gap width*gap qty+16.4mm

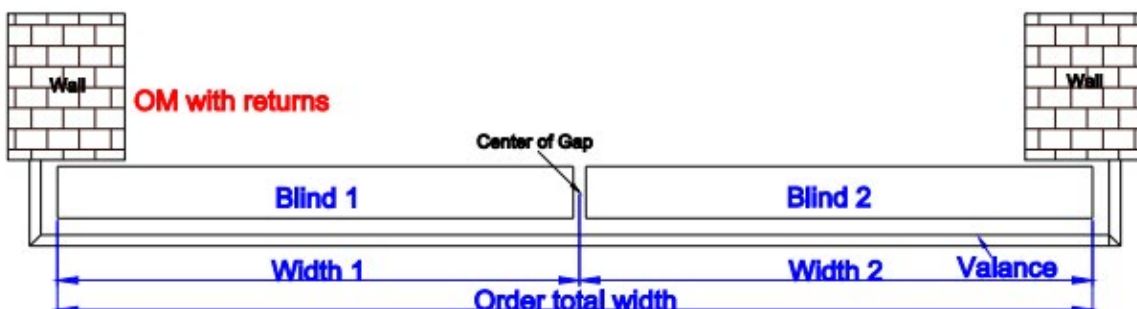
IM with returns



For OM without valance return, the standard common valance size = left blind width +right blind width +middle blind width +gap width*gap qty+25.4mm.



For OM with valance return, the standard common valance size = left blind width +right blind width +middle blind width +gap width*gap qty+25.4mm.



Deductions for blinds with a Common Valance

Outside Mount: No deduction taken

Inside Mount: the left/Right blind width= left/Right order width-5mm- half of gap width

The middle blind width= middle order width-half of the left gap width- half of the right gap width

CUTOUT RULES (SURCHARGE)

A cutout is a blind with an area removed from it to avoid an existing obstruction. Please provide detailed measurements of the area to be removed, which should include:

- *Cutout width
- *Cutout height
- *Left width
- *Right width

Please note that the cut out will be made when slats are in a closed position, and based on the cutout size provided.

The cutout heights are measured up from the bottom of bottom rail no deductions no matter the measuring type is

Window Size or Net Blinds Size.

For Window Size, the cutout widths are measured from the inner edge of window and the standard deduction will be made by the factory unless otherwise specified.

For Net Blinds Size, the cut out widths are measured from the edge of blind with no deductions.

A template/ diagram with the cutout similar to the one below is preferred with the order.

Mark your measurements on a template of the cutout to ensure a perfect fit to your window.

Cutout Location	Blind Width (x)	Min Cutout Size on Width (E)	Max. Cutout Size on Width (E)	Example Image
Cutout on the bottom rail and the bottom section of the slats: Bottom Left Corner/ Right Corner /Both Corners & Cutout on the middle drop section of the slats: Left Side/Right Side/Both Side	$165\text{mm} \leq Y < 305\text{mm}$	3mm	14mm	
	$305\text{mm} \leq Y \leq 457\text{mm}$		52mm	
	$X > 457\text{mm}$		114mm	

ALBARO VENETIAN COLOURS

[BACK TO MENU](#)

20 finishes available with colour coordinated brackets and tapes.

Blind Colour		Finish	PVC Headrail	Bracket	Ladder/ Cord	Safety Tassel	Bottom Rail
6016 Pure White		Painted - smooth	2080 Pure White	3058 White	T001 White	2037 Snow White	2080 Pure White
6017 Silk White		Painted - smooth	2003 Silk White	3058 White	T001 White	2037 Snow White	2003 Silk White
6018 Bright White		Painted - smooth	2003 Silk White	3058 White	T001 White	2037 Snow White	2079 Bright White
6019 Pearl		Painted - smooth	2095 Pearl	H002 Vanilla	5020 Alabaster	2037 Snow White	2095 Pearl
6051 Designer White		Painted - smooth	20108 Designer White	3058 White	T001 White	2012 Cameo	20103 Designer White
6016 Pure White (embossed)		Painted - embossed	2080 Pure White	3058 White	T001 White	2037 Snow White	2080 Pure White
6057 Crisp Linen		Painted - embossed	20102 Crisp Linen	H002 Vanilla	5020 Alabaster	2012 Cameo	20102 Crisp Linen
6101 Storm Grey		Painted - embossed	2149 Storm Grey	3149 Storm Grey	5107 Silver	2139 Silver Greyt	2149 Storm Grey
6102 Sea Mist		Painted - embossed	2150 Sea Mist	3150 Sea Mist	5107 Silver	2139 Silver Grey	2150 Sea Mist
6103 Taupe Grey		Painted - embossed	2151 Taupe Grey	3132 Light Grey	5107 Silver	2151 Taupe Grey	2151 Taupe Grey
6921 Chestnut		Wood print - embossed	2537 Oak Mantel	3523 Sugar Maple	5526 Cottage Pine	2522 Teak	6921 Chestnut
6922 Old Teak		Wood print - embossed	2457 Old Teak	3436 Coffee	5413 Walnut	2413 Walnut	6922 Old Teak
6923 Black Walnut		Wood print - embossed	2202 Black Walnut	3208 Black	T201 Black	P201 Charcoal (Black)	6923 Black Walnut
6933 Limed White		Wood print - embossed	2059 Limed White	3059 Limed White	5020 Alabaster	2012 Cameo	6933 Limed White
6936 Natural Oak		Wood print - embossed	2592 Natural Oak	3523 Sugar Maple	5526 Cottage Pine	2522 Teak	6936 Natural Oak
6937 Driftwood		Wood print - embossed	2134 Driftwood	3105 Grey	T168 Grey	P101 Grey	6937 Driftwood
6938 Grey		Wood print - embossed	2138 Grey	3132 Light Grey	T168 Grey	P101 Grey	6938 Grey
6757 Mist		Wood print - embossed	2003 Silk White	3058 White	T001 White	2037 Snow White	6957 Mist
6958 Truffle		Wood print - embossed	2138 Grey	3132 Light Grey	T168 Grey	P101 Grey	6958 Truffle
6959 Granite		Wood print - embossed	2141 Granite	3105 Grey	T168 Grey	P101 Grey	6959 Granite

ALBARO CLOTH TAPE COLOURS

Face width 25.4mm. Available only with centre slot cloth tape blinds.



T001A White



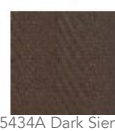
T002A Ivory



5507A Natural



5124A Dusty Grey



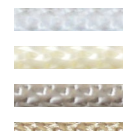
5434A Dark Sienna



T201A Black

CORD COLOURS

A variety of cord colours which are colour coordinated to match the Albaro venetians.



T001 - White



5020 Alabaster



5107 Silver



T168 - Grey



5526 - Cottage Pine



5413 - Walnut



5430 - Mahogany



T201 - Black

STACKING HEIGHTS

50mm Privacy Cord			63mm Privacy Cord			50mm Centre Slot Cloth Tape			63mm Centre Slot Cloth Tape		
Blinds height (mm)	Stacking height (mm)	Slat qty	Blinds height (mm)	Stacking height (mm)	Slat qty	Blinds height (mm)	Stacking height (mm)	Slat qty	Blinds height (mm)	Stacking height (mm)	Slat qty
254	77	4	254	73	3	254	78	4	254	75	3
279.4	80	5	279.4	77	4	279.4	82	5	279.4	78	4
304.8	83	6	304.8	77	4	304.8	85	6	304.8	78	4
330.2	83	6	330.2	80	5	330.2	85	6	330.2	82	5
355.6	87	7	355.6	80	5	355.6	89	7	355.6	82	5
381	87	7	381	80	5	381	89	7	381	82	5
406.4	90	8	406.4	83	6	406.4	93	8	406.4	85	6
431.8	90	8	431.8	83	6	431.8	93	8	431.8	85	6
457.2	93	9	457.2	87	7	457.2	96	9	457.2	89	7
482.6	97	10	482.6	87	7	482.6	100	10	482.6	89	7
508	97	10	508	90	8	508	100	10	508	93	8
533.4	100	11	533.4	90	8	533.4	104	11	533.4	93	8
558.8	100	11	558.8	93	9	558.8	104	11	558.8	96	9
584.2	103	12	584.2	93	9	584.2	107	12	584.2	96	9
609.6	103	12	609.6	93	9	609.6	107	12	609.6	96	9
635	106	13	635	97	10	635	111	13	635	100	10
660.4	110	14	660.4	97	10	660.4	115	14	660.4	100	10
685.8	110	14	685.8	100	11	685.8	115	14	685.8	104	11
711.2	113	15	711.2	100	11	711.2	118	15	711.2	104	11
736.6	113	15	736.6	103	12	736.6	118	15	736.6	107	12
762	116	16	762	103	12	762	122	16	762	107	12
787.4	120	17	787.4	103	12	787.4	126	17	787.4	107	12
812.8	120	17	812.8	106	13	812.8	126	17	812.8	111	13
838.2	123	18	838.2	106	13	838.2	129	18	838.2	111	13
863.6	123	18	863.6	110	14	863.6	129	18	863.6	115	14
889	126	19	889	110	14	889	133	19	889	115	14
914.4	126	19	914.4	113	15	914.4	133	19	914.4	118	15
939.8	130	20	939.8	113	15	939.8	137	20	939.8	118	15
965.2	133	21	965.2	116	16	965.2	140	21	965.2	122	16
990.6	133	21	990.6	116	16	990.6	140	21	990.6	122	16
1016	136	22	1016	116	16	1016	144	22	1016	122	16
1041.4	136	22	1041.4	120	17	1041.4	144	22	1041.4	126	17
1066.8	139	23	1066.8	120	17	1066.8	148	23	1066.8	126	17
1092.2	139	23	1092.2	123	18	1092.2	148	23	1092.2	129	18
1117.6	143	24	1117.6	123	18	1117.6	151	24	1117.6	129	18
1143	146	25	1143	126	19	1143	155	25	1143	133	19
1168.4	146	25	1168.4	126	19	1168.4	155	25	1168.4	133	19
1193.8	149	26	1193.8	130	20	1193.8	158	26	1193.8	137	20
1219.2	149	26	1219.2	130	20	1219.2	158	26	1219.2	137	20
1244.6	153	27	1244.6	130	20	1244.6	162	27	1244.6	137	20
1270	153	27	1270	133	21	1270	162	27	1270	140	21
1295.4	156	28	1295.4	133	21	1295.4	166	28	1295.4	140	21
1320.8	159	29	1320.8	136	22	1320.8	169	29	1320.8	144	22
1346.2	159	29	1346.2	136	22	1346.2	169	29	1346.2	144	22
1371.6	163	30	1371.6	139	23	1371.6	173	30	1371.6	148	23
1397	163	30	1397	139	23	1397	173	30	1397	148	23
1422.4	166	31	1422.4	139	23	1422.4	177	31	1422.4	148	23
1447.8	169	32	1447.8	143	24	1447.8	180	32	1447.8	151	24
1473.2	169	32	1473.2	143	24	1473.2	180	32	1473.2	151	24
1498.6	172	33	1498.6	146	25	1498.6	184	33	1498.6	155	25
1524	172	33	1524	146	25	1524	184	33	1524	155	25
1549.4	176	34	1549.4	149	26	1549.4	188	34	1549.4	158	26
1574.8	176	34	1574.8	149	26	1574.8	188	34	1574.8	158	26
1600.2	179	35	1600.2	153	27	1600.2	191	35	1600.2	162	27
1625.6	182	36	1625.6	153	27	1625.6	195	36	1625.6	162	27
1651	182	36	1651	153	27	1651	195	36	1651	162	27
1676.4	186	37	1676.4	156	28	1676.4	199	37	1676.4	166	28
1701.8	186	37	1701.8	156	28	1701.8	199	37	1701.8	166	28
1727.2	189	38	1727.2	159	29	1727.2	202	38	1727.2	169	29
1752.6	189	38	1752.6	159	29	1752.6	202	38	1752.6	169	29
1778	192	39	1778	163	30	1778	206	39	1778	173	30
1803.4	196	40	1803.4	163	30	1803.4	210	40	1803.4	173	30
1828.8	196	40	1828.8	163	30	1828.8	210	40	1828.8	173	30
1854.2	199	41	1854.2	166	31	1854.2	213	41	1854.2	177	31
1879.6	199	41	1879.6	166	31	1879.6	213	41	1879.6	177	31
1905	202	42	1905	169	32	1905	217	42	1905	180	32
1930.4	202	42	1930.4	169	32	1930.4	217	42	1930.4	180	32
1955.8	205	43	1955.8	172	33	1955.8	221	43	1955.8	184	33
1981.2	209	44	1981.2	172	33	1981.2	224	44	1981.2	184	33
2006.6	209	44	2006.6	176	34	2006.6	224	44	2006.6	188	34
2032	212	45	2032	176	34	2032	228	45	2032	188	34
2057.4	212	45	2057.4	176	34	2057.4	228	45	2057.4	188	34
2082.8	215	46	2082.8	179	35	2082.8	231	46	2082.8	191	35
2108.2	219	47	2108.2	179	35	2108.2	235	47	2108.2	191	35
2133.6	219	47	2133.6	182	36	2133.6	235	47	2133.6	195	36
2159	222	48	2159	182	36	2159	239	48	2159	195	36
2184.4	222	48	2184.4	186	37	2184.4	239	48	2184.4	199	37
2209.8	225	49	2209.8	186	37	2209.8	242	49	2209.8	199	37
2235.2	225	49	2235.2	186	37	2235.2	242	49	2235.2	199	37
2260.6	229	50	2260.6	189	38	2260.6	246	50	2260.6	202	38
2286	232	51	2286	189	38	2286	250	51	2286	202	38
2311.4	232	51	2311.4	192	39	2311.4	250	51	2311.4	206	39
2336.8	235	52	2336.8	192	39	2336.8	253	52	2336.8	206	39
2362.2	235	52	2362.2	196	40	2362.2	253	52	2362.2	210	40
2387.6	238	53	2387.6	196	40	2387.6	257	53	2387.6	210	40
2413	238	53	2413	199	41	2413	257	53	2413	213	41
2438.4	242	54	2438.4	199	41	2438.4	261	54	2438.4	213	41

S:CRAFT blinds are backed by a warranty up to 2 years, starting from the shipping date of the order. The warranty covers original defects in material or workmanship, the following conditions apply:

1. The product was properly installed.
2. The product was made or assembled exclusively from Nien Made materials and components.
3. Nien Made recommendations were followed with regard to limitation and specifications.
4. If the original order waived the warranty, the EDR order (without any modifications) will have the same warranty condition as the original order.
5. For any remake orders, the warranty starts from the shipping date of the original order.
6. For EDR, the warranty starts from the shipping date of the reorder order.

Covered	Not Covered
<ul style="list-style-type: none">• All internal hardware including components and brackets are covered• Operational cords• Colour fastness• Material and workmanship	<ul style="list-style-type: none">• Any damage caused by unauthorised repairs, modified or improper installation, cleaning or maintenance• Accidents, alterations, misuse, abuse of the product• Exposure to elements (sun, wind, water/moisture, and fading or discolouration over time• Shipping charges, any removal and reinstallation related cost• Any conditions caused by normal wear and tear



Newdown Farm
Micheldever
Winchester
Hampshire
SO21 3BT
01962 794530
www.s-craft.co.uk
Shuttercraft Ltd.
(Trading as S:CRAFT)