



ember

The *perfect* temperature, every time.

The perfect addition to their morning

Give your clients, employees or VIPs a
gift they will truly appreciate - day in
and day out.



Robb Report

The 10 Best Coffee Mugs to Make Your Joe Look as Good as It Tastes

Sweeten the java-drinking experience with these stylish cups.

Ember Smart Mug 2



Best High-Tech Coffee Mug

GEAR PATROL

Ember's Smart Tumbler Keeps Your Coffee the Perfect Temperature Wherever You Go

The Ember Tumbler is the brand's largest and most portable smart mug yet.



TODAY

Here's what experts — our actual moms — say they want for Mother's Day

Ember Temperature Control Smart Mug 2



For moms who take their coffee piping hot, this temperature-control smart mug from Ember is a perfect choice. Deabler said her mom is very particular about her coffee's temperature. "She practically has to microwave it after every sip so it stays 'extra hot.'"

the Strategist

The Best Gifts for Tea Lovers, According to Tea Sommeliers



Ember Temperature Control Smart Mug

\$170

If they're the type who brews a cup of tea and then forgets, letting it sit out to get cold, the Ember Mug will allow them to reheat directly in the vessel they're drinking from without using a microwave or maintain a hot temperature while it's kept on the base. It heats between 120 and 145 degrees in one-degree increments so they can choose exactly what tastes ideal to them.

VOGUE

38 Wonderful Gifts for Men, From Tiny Tech Treasures to Fall Fashion Essentials



EMBER temperature control smart mug

FOOD & WINE

Give Mom the Gift of a Cup of Coffee That Stays Warm for Hours with This Editor-Loved Mug



POPSUGAR

19 Gifts Every Coffee-Lover Will Appreciate



A Coffee Essential: Ember Temperature Control Smart Mug 2

This Ember Temperature Control Smart Mug 2 (\$120-\$130) will keep their drink at their desired temperature for however long they decide to nurse it. It's perfect for those who need a warm cup of coffee to get through the work day. They can customize the settings all in the accompanying app. It comes in white, black, and red.

SELF

58 Actually Useful Gifts All Practical People Will Appreciate

SELF FAVE



This smart mug is a fave of SELF senior commerce writer Sara Coughlin, who praised it for keeping her tea and coffee at their own "sacred temperatures."

InStyle

24 Mother's Day Gift Ideas

From luxury beauty treatments to must-have necessities — we've got your Mother's Day shopping covered.



Ember Temperature Control Smart Mug 2

Not too hot, not too cold. For the all-day coffee drinkers, this mug allows you to set the temperature of your drink.

GOOD HOUSEKEEPING

48 Unique Gifts for Parents, Even if They Already Have Everything



23 IDEAL FOR NEW PARENTS Ember Temperature Control Smart Mug

SHOP AT AMAZON

SHOP AT SUR LA TABLE

SHOP AT BLOOMINGDALE'S

CREDIT CARD

If the parents in your life can't bear the idea of drinking coffee that's gone cold for the next 18 years, give them this smart mug, which keeps coffee hot while it's on its charging coaster. Users can also download an app to control the temperature or program presets.

BAZAAR

67 Luxe Gift Ideas for the Man Who Has Everything

BEST GIFT FOR WARM BEVERAGES

Ember Temperature Control Smart Mug



BuzzFeed

50 Gifts To Give Your Parents To Upgrade Their Life

10. An Ember temperature control ceramic mug in case the tea and coffee-lover in your life is in need of a mug upgrade. This mug will keep their beverage hot, per their temp preference.



A black thermal mug is shown from the bottom up, with a thick layer of white steam rising from the top. The background is solid black, making the white steam stand out. The mug has a dark, possibly black, lid.

“The best *gift* I could have
given a coffee lover.”

Our Products



Ember Cup
6 oz



Travel Mug 2+
12 oz



Ember Mug 2
14 oz



Ember Mug 2
10 oz

Introducing **TUMBLER** **16 oz**

The all-new Ember Tumbler boasts a 16 oz capacity and 3 hours of battery life, plus two included lids. Learn more on page 11.







Ember Mug 2

Designed for home or office, the new Ember Mug² does more than simply keep your coffee hot. Our smart mug allows you to set an exact drinking temperature, so your coffee is never too hot, or too cold.



Smart LED

Indicates when beverage has reached its perfect temperature and more.



Auto Sleep

Intelligently senses when to turn on and off.



Temperature Range

120°F - 145°F (50°C - 62.5 °C)
Select your temperature with the Ember app.

Ember Mug 2

Size **Battery Life**

10 oz 1.5 Hours

Colors



Custom Options



Single-Color
Pad Print



Multi-Color
Pad Print



Laser
Engraving

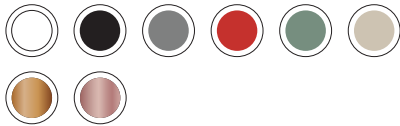


Ember Mug 2

Size **Battery Life**

14 oz 1.5 Hours

Colors



Custom Options



Single-Color
Pad Print



Multi-Color
Pad Print



Laser
Engraving



Ember Tumbler

Size Battery Life

16 oz 3 Hours

Colors



Custom Options



Single-Color
Pad Print



Multi-Color
Pad Print



Laser
Engraving



(ember)^{RED}

The World's First
Temperature Control Mug
now gives back



Ember has joined forces with (RED) to fight global health emergencies, like AIDS and COVID. 100% of funds raised support life-saving programs in communities most in need.*

*3% of the purchase price from all (Ember)^{RED} Mugs goes directly to the Global Fund, with a minimum guaranteed donation of \$100,000.



Ember Cup

Ideal for espresso-based drinks such as cappuccinos, cortados, and flat whites, the Ember Cup 6 oz offers a premium coffee experience that does more than keep your coffee hot. Enjoy your expertly crafted hot drink –just the way you like it– from the first sip to the last drop.



Smart LED
Indicates when beverage has reached its perfect temperature and more.



Auto Sleep
Intelligently senses when to turn on and off.



Temperature Range
120°F - 145°F (50°C - 62.5 °C)
Select your temperature with the Ember app.

Ember Cup

Size Battery Life

6 oz 1.5 Hours

Colors



Custom Options



Single-Color
Pad Print



Multi-Color
Pad Print



Laser
Engraving

**Laser engraving is not available for Metallic Collection*



Ember Travel Mug 2+

Designed to be used on-the-go, the Ember Travel Mug² does more than simply keep your coffee hot. Our smart heated travel mug allows you to set an exact drinking temperature and keeps it there for up to 3 hours, so your coffee is never too hot, or too cold.

The Apple Find My network provides an easy, secure way to locate your Ember Travel Mug 2+ on a map using the Find My app on your iPhone, iPad, or Mac, or the Find Items app on your Apple Watch.



Touch Display

Increase or decrease your temperature on the go by tapping the + or - symbol.



Auto Sleep

Intelligently senses when to turn on and off.



Temperature Range

120°F - 145°F (50°C - 62.5 °C)
Select your temperature with the Ember app.

Ember Travel Mug 2+

Size Battery Life

12 oz 3 Hours

Colors



Custom Options



Single-Color
Pad Print



Multi-Color
Pad Print



Laser
Engraving



**Laser engraving is not available for Ember Travel Mug²*

The Metallic Collection



Copper Edition

For anyone looking to add a bit more warmth to their routine, the Copper Edition brings comfort to all morning rituals.



Ember Cup
6 oz



Ember Mug²
10 oz



Ember Mug²
14 oz





Rose Gold Edition

This Ember Mug² is perfect for avid rose gold collectors. The blush undertones foster a serene sipping experience.



Ember Mug²
10 oz



Ember Mug²
14 oz

Gold Edition

Our gold edition illuminates the room as a symbol of luxury. This alluring finish adds an element of prestige to any desk.



Ember Mug²
10 oz



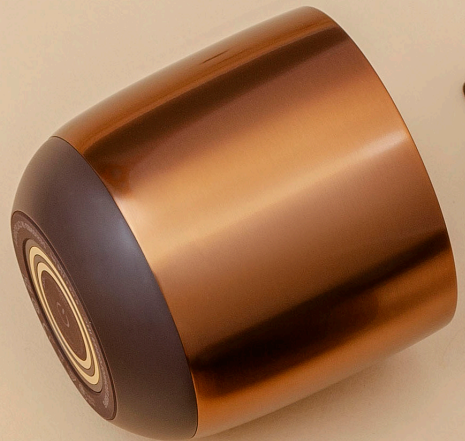


Stainless Steel Edition

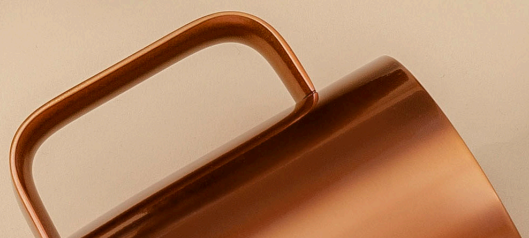
This classic finish feels clean, straightforward and high-tech. This particular edition rests comfortably in almost any office environment.



Ember Mug²
10 oz



Custom Capabilities



Custom Capabilities



Single Color Pad Print

Direct single color pad prints use the Pantone color system and apply the ink via an offset printing process to transfer the ink from an etched plate to the mug surface.



Laser Engraving

Laser Etching vaporizes the material from the surface of the mug, revealing the stainless-steel underneath leaving a sleek and high quality finished logo.*

**Not available for Travel Mug²*



Multi Color Pad Print

Direct multi color pad prints use the Pantone color system and apply the inks via an offset printing process to transfer the inks from an etched plate to the mug surface.



ember

Sales@ember.com | ember.com/custom

Follow us

