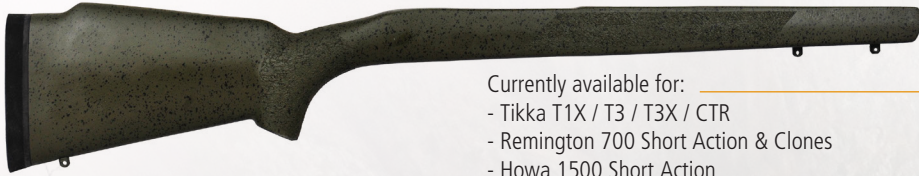




*The Next Level in Rifle Stocks*

# STOCK MODELS

## PSE Hunter /Multi-Purpose

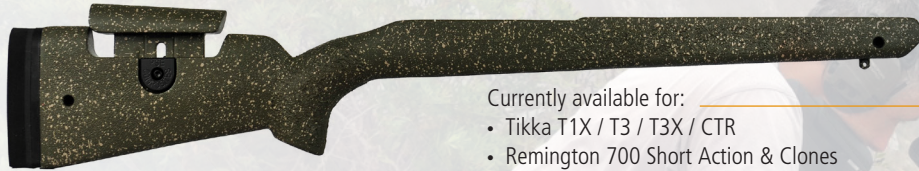


Currently available for:

- Tikka T1X / T3 / T3X / CTR
- Remington 700 Short Action & Clones
- Howa 1500 Short Action

Hand-made ultralight carbon fibre rifle stocks designed by hunters for hunters. PSE Hunter stocks typically weigh less than 700 grams / 25 Oz complete!

## PSE E-Lite



Currently available for:

- Tikka T1X / T3 / T3X / CTR
- Remington 700 Short Action & Clones
- Heym SR21 & SR30

An adjustable carbon fibre light weight rifle stock. The PSE E-Lite starts off at only 850 grams / 30 Oz complete!

## PSE E-Tac



Currently available for:

- Tikka T1X / T3 / T3X / CTR
- Remington 700 Short Action & Clones
- Remington 700 Long Action & Clones
- Schultz & Larsen Tactical & Victory  
(Sold exclusively by Schultz & Larsen)

Hand-made carbon fibre tactical rifle stocks. PSE E-Tac Ultralight stocks typically weigh less than 1000 grams / 35 Oz. Also available in Mil-Spec. Basically the same design but even stronger and stiffer. PSE E-Tac Mil-Spec stocks typically weigh around 1100 grams / 39 Oz. Fixed integrated weights possible - made to customer spec.

# PSE STOCK FEATURES



## Barrel Channels

- E-Tac stocks have a straight 35mm wide barrel channel to take the heaviest of barrels.
- Hunter, Multi-Purpose & E-Lite stocks will take up to Tikka Factory Varmint Barrels & some aftermarket carbon barrels.



## The Unique PSE Pistol Grip



Pentagon-shaped grip so that the rifleman develops a feel for his rifle through practice and easily develops a sub-conscious orientation with this shape.

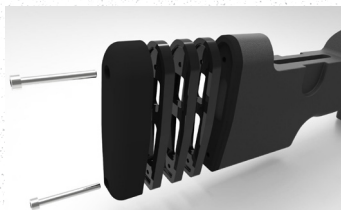
## Integrated Carbon Pillars

Carbon Pillars inside - no metal pillars needed



## Adjustable Cheek Piece

SHQR – Single Hand Quick Release System invented by PSE. Spring loaded, tool-free adjustability.



## Length of Pull Spacers

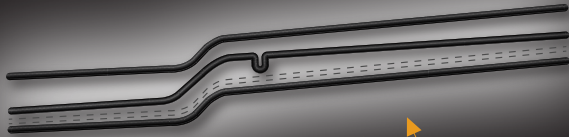
Simple & effective LOP spacer system available for E-Lite and E-Tac stocks.

## Grip Options



Stippling or Shark-Skin-Type Grip options available

Fig 2.

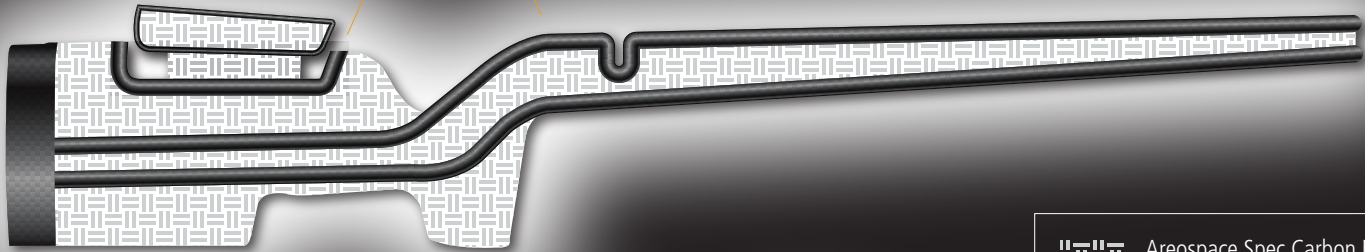


# ICS TECHNOLOGY

## Integrated Carbon Skeleton

A Carbon Frame front to back in each PSE Stock forms the 'Integrated Carbon Skeleton' (ICS). This is the back bone of a PSE Stock. Unrivaled stiffness and strength is a result of this ICS Technology.

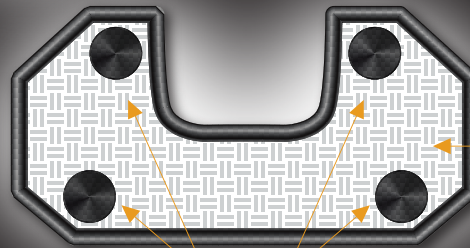
Fig 1.



Areospace Spec Carbon Fibre makes up the outer carbon shell of a PSE Stock. The outer shell houses the ICS/Integrated Carbon Skeleton.

### What does ICS technology achieve?

- Improved recoil absorption & distribution
- No conventional stock issues such as bonding or splitting problems
- Very stiff and rigid construction yielding improved shooting accuracy
- Maintenance-free, no-nonsense rifle stocks made to perform



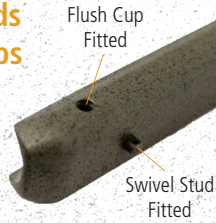
Carbon Skeleton

Lightweight Recoil  
- Absorbing Fill Material

Fig 3. Cross Section of a PSE barrel channel

# STOCK CUSTOMISATION

Swivel Studs  
& Flush Cups



Picatinny Rail

Arca/M-Lok Rail



Epoxy Bedding

Weighted Cheek Piece  
for Competition



Gen II Accessory Rail



Bottom  
Metals



LOP  
Spacers

Sling  
Attachments



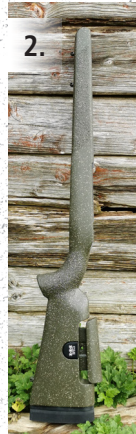
View all stock options on [www.pseriflestocks.com](http://www.pseriflestocks.com) or contact us to discuss your next build!



Please view our website for more photos and videos or feel free to check out our new YouTube channel!

[www.pseriflestocks.com](http://www.pseriflestocks.com)

# STOCK COLOUR OPTIONS



Some colour options currently available for PSE Rifle Stocks

1. Tac Black
2. Green / Coyote
3. OD Green
4. Irish Mix
5. Irish Earth
6. Black Grey Green Sponge
7. Desert Forest Camo
8. FDE Camo
9. Oliv Sponge

Other finishes available - check out the PSE website!



**CONTACT US:**

Web: [www.pseriflestocks.com](http://www.pseriflestocks.com) | Email: [info@pse-composites.com](mailto:info@pse-composites.com)

Tel: +353(0)876818844 | +353(0)872363263

Address: PSE Composites, Waterfall House, Garrettstown, Ballinspittle, Co. Cork, P17 E940, Ireland.



*Made in  
Ireland*