

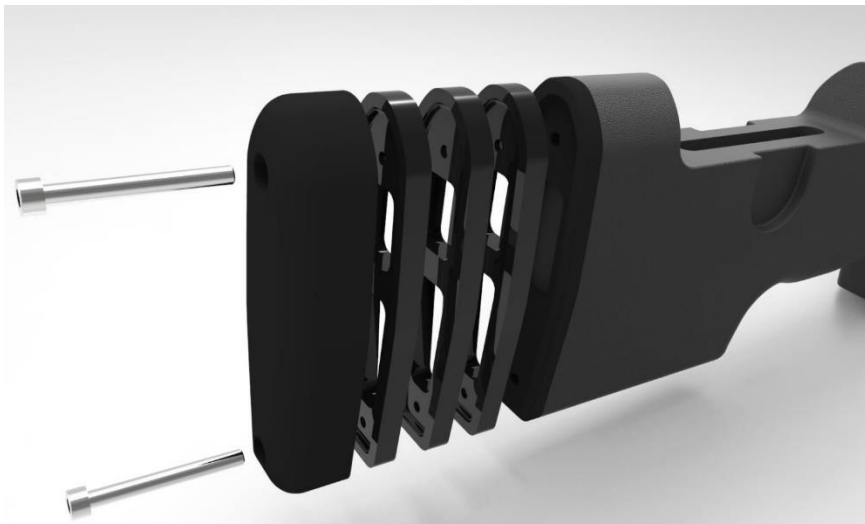
**PSE Length of Pull (LOP) Spacer Installation Instructions:**

Make sure you use the following screws depending on how many spacers you are installing:

0-2 Spacers per stock - use M5x40

3-5 Spacers per stock - use M5x60 (slightly longer screws)

**BE CAREFUL NOT TO USE THE LONGER SCREWS WHEN ONLY USING LESS THAN 3 SPACERS!!!**



**PSE Length of Pull (LOP) Spacer Installation Instructions:**

Make sure you use the following screws depending on how many spacers you are installing:

0-2 Spacers per stock - use M5x40

3-5 Spacers per stock - use M5x60 (slightly longer screws)

**BE CAREFUL NOT TO USE THE LONGER SCREWS WHEN ONLY USING LESS THAN 3 SPACERS!!!**

