

PROFILE

Fact Sheet

Profile 300

Rapid Cut Surface Restorer



Product Description

Profile 300 is a mid range, high gloss, water-based compound capable of removing P1000-P1200 dry abrasive marks. It restores gloss and colour to virtually any gelcoated or painted surface. It can be used by itself or with other compounds either as a first stage before Profile 500 or as a finishing compound after Profile 100.

Technical Information

Appearance: White coloured liquid / paste

Viscosity: Medium viscosity

VOC Content: 12.14% of total product

Relative Density: 1.45

pH: 9.8

Types of Surface: Polyester, acrylic and epoxy resins and gelcoats, industrial paint finishes, wood lacquers, solid surfaces

Product Information

Size	Code	Ctn Qty
220g	PRO300-0200	24
1 litre (34 fl.oz.)	PRO300-1400	6
2.5 litres (85 fl.oz.)	PRO300-3200	4
5 litres (170 fl.oz.)	20103-5000	2

Key Benefits

• Versatile	Universal compound giving an excellent cut and high shine gloss for rapid restoration and finishing of most surfaces
• Simple and Precise	Easy to use by machine but can also be used by hand for difficult to reach areas
• Efficient	Quick and economical in use with a high level of abrasive
• High Gloss Result	Contains no added fillers, giving a permanent gloss finish with no risk of die-back
• Safe Solutions	Water based with low VOC content for safer working and easier clean-up

Use With

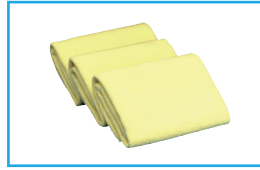
Primary Application



G Mop 8" Adv. Wool
Compounding Pad
[AGM-WCP8](#)



G Mop 8" Advanced
Back Plate
[AGM-BP814](#)

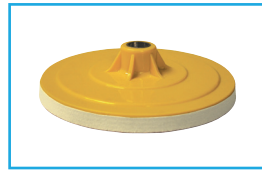


Farécla Finishing
Cloth
[FC-3](#)

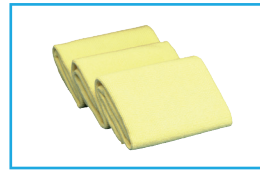
Secondary Application



G Mop 8" Advanced
Lambswool Pad
[AGM-LWP8](#)



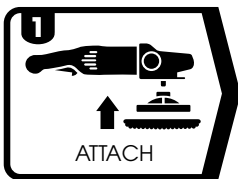
G Mop 8" Advanced
Back Plate
[AGM-BP814](#)



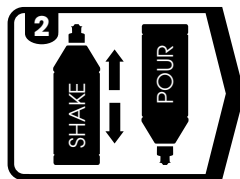
Farécla Finishing
Cloth
[FC-3](#)

How To Use

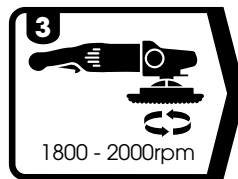
Machine Application



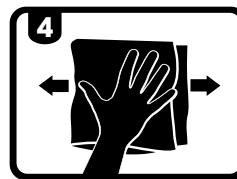
Attach 8" Wool
Compounding
Pad to polishing
machine
[AGM-WCP8](#) (pad)



Shake well and
apply a small
amount of
compound to
surface
[PRO300-1400](#) (ltr)



Spread and
compound at
1800 - 2000rpm
and add medium
pressure



Wipe clean with a
Farécla Finishing
Cloth
[FC-3](#) (cloth)

Repeat if
necessary

*It is always recommended to test on an inconspicuous area prior to general use

Additional Information

Profile 300 can be used on all gelcoats and paints for production of composite parts in marine, transport and sanitary ware applications. It restores surface gloss and colour to weathered surfaces on boats, caravans, trucks and planes and is safe and easy to use by machine and hand. It also removes scratches from acrylic glass and thermoformable sheet.