

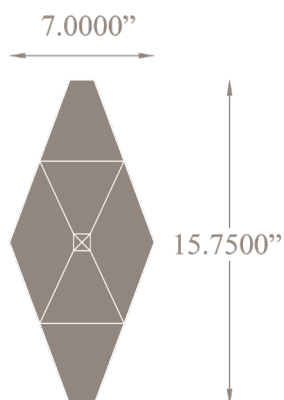
# hourglass

VARIATIONS COLLECTION FOR WALLS & CEILINGS

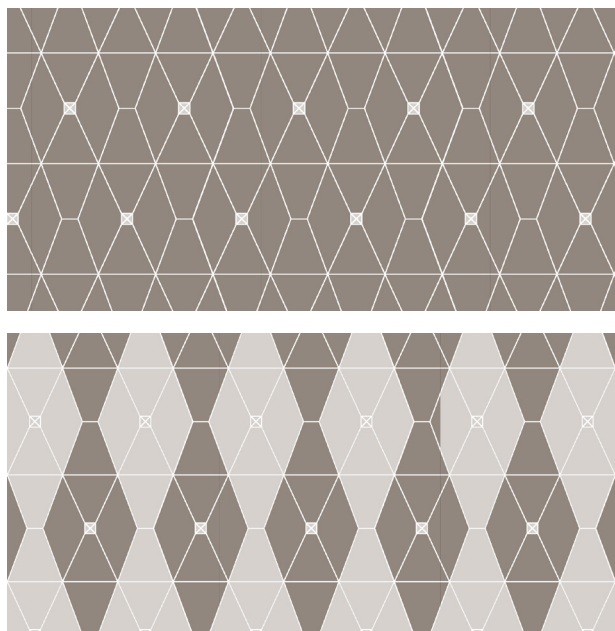


JAMIE BECKWITH®  
COLLECTION

## 1. PATTERN & REPEAT



## 2. LAYOUT SUGGESTIONS



## SPECIFICATIONS

### WOOD TILE CONSTRUCTION:

Engineered wood.  
4mm wear layer over 9 ply substrate.

### THICKNESS:

5/8 inches.

### REPEAT:

N/A

### BOX QUANTITY:

13.41 SF per box.  
30 tiles total per box.

### COVERAGE PER TILE:

.447 SF

### NAILHEAD:

Only offered in black as shown.

### INSTALLATION:

Glue down. (See installation guidelines)  
Wood tiles are NOT provided on a mesh or panel backing.

### USAGE:

Warranted for Commercial or Residential walls & ceilings.  
Not suitable for areas exposed to running water: inside showers, etc.  
Not suitable for outdoor applications.  
Not suitable for flooring.

### LEADTIME:

6-8 weeks for production.  
Expedited options available upon request for an upcharge.

### PRICING:

Varies by pattern & wood species.  
Multiple stain selections do not affect pricing.

### FIRE RATING:

Class C. (Class B available upon request)

### STAINING SYSTEM:

Rubio Monocoat hard oil finish - no VOC.  
Available unfinished.

### LEED CREDITS:

2009 NC/CI MR Credit 5 - Regional Materials  
2009 NC/CI IEQ Credit 4.1-4.4 - Low Emitting Finish

\*\*\*This product may contribute to the achievement of LEED credits, although JBC makes no guarantees of representation of such.

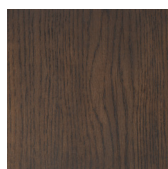
### CAD PATTERNS AVAILABLE UPON REQUEST.

Contact your local JBC representative.

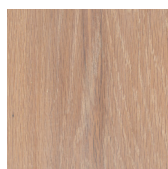
## 3. SPECIES



Plain White Oak



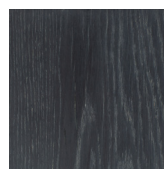
Bark



Natural



Driftwood



Slate

## 4. STAINS