

J4C05 2.4GHz 4CH TRANSMITTER & RECEIVER INSTRUCTION MANUAL

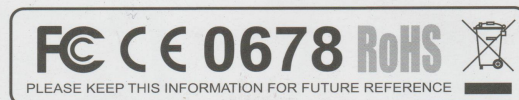


Please note that this product cannot be disposed of in general household waste as it contains electrical components. Under the Waste Electronic and Electrical Equipment Directive (WEEE), this product should only be disposed of at a correct re-cycling facility or by returning it to the shop it was purchased from. Please contact your local authority for details of your local re-cycling centre.



This product complies with the essential requirements of all relevant EU Directives. A copy of the Declaration of Conformity can be obtained from the following website www.joysway-hobby.com

JOYSWAY HOBBY (HK) LTD.



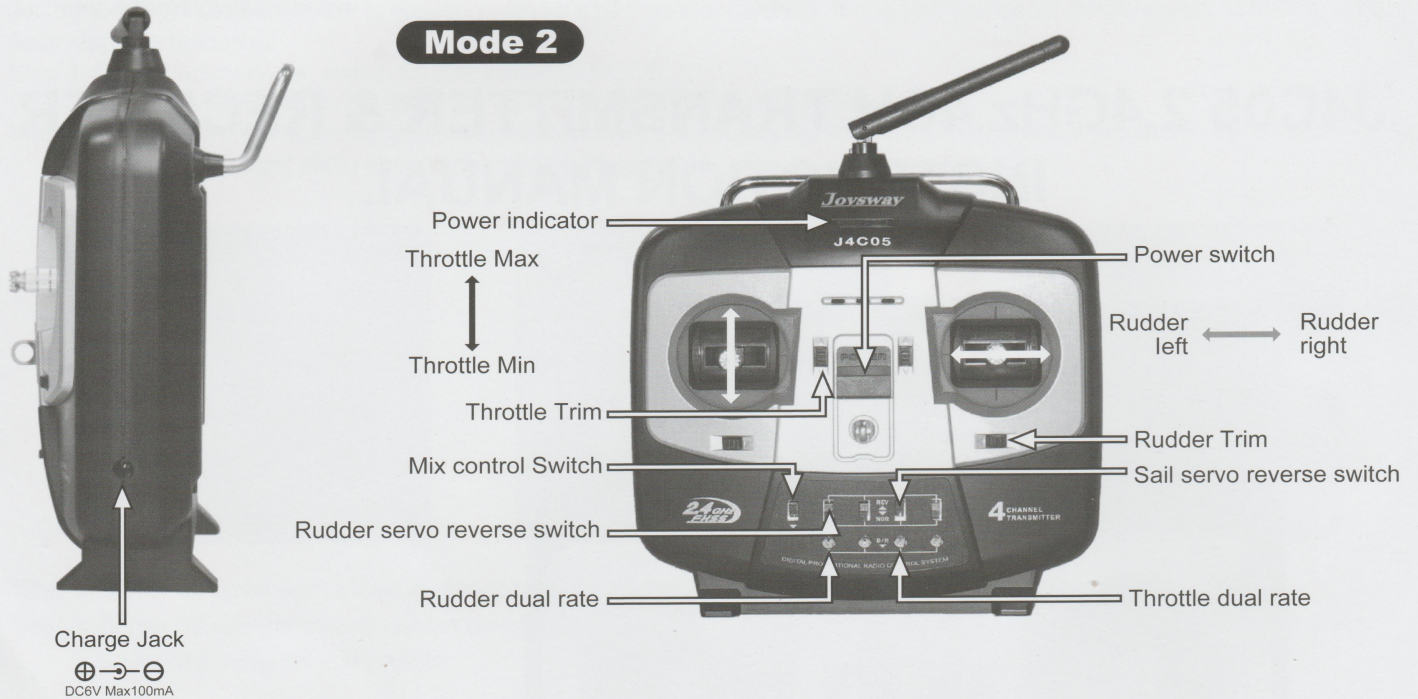
FCC REQUIREMENT



This device complies with Part 15 of the FCC Rules. Operation is subject to the following two conditions: (1) This device may not cause harmful interference, and (2) This device must accept any interference received, including interference that may cause undesired operation.

CAUTION: Changes or modifications to this product not expressly approved by the party responsible for compliance may void the user's authority to operate the equipment.

Joysway J4C05 Transmitter / J5C01R Receiver Introduction



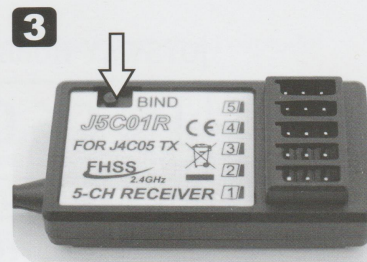
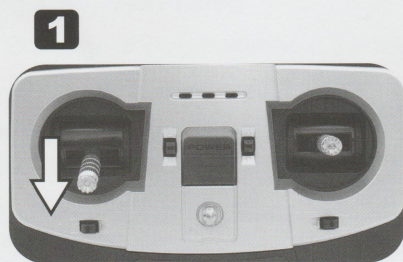
NOTE:

1. MXMD button is mix control ON/OFF button, switch up as "OFF" because DF65/95 don't need mix control.
2. Supplied plastic screwdriver on transmitter handle, use this part to adjust Rudder & Throttle dual rate.
3. Connect up the Servo, Winch and Battery Switch Cables up to the Receiver as follows:
 - Rudder Servo plugs into Channel 1 socket.
 - Sail/Winch plugs into Channel 3 socket.
 - On/Off Switch plugs into any rest socket

TRANSMITTER/RECEIVER BINDING

The binding process effectively ties the J4C05 transmitter and J5C01R receiver together. Under normal circumstances, both items are supplied like this from the factory. If, however, you find that your transmitter and receiver are not bound (receiver's red LED will be lighting), you should do the following:

1. Push down the throttle stick (Left Stick, MODE 2) till the end as shown. Switch "ON" the transmitter.
2. Switch "ON" the receiver by switching "ON" the battery box power button.
3. Press down the "BIND" button on the receiver as shown, until the receiver's red LED flash then let go, the receiver's green LED will be lighting to indicate that binding has been successful and the receiver will now accept commands from the transmitter.



Note 1: You would also need to carry out the binding process if you were to replace the included receiver with another one.

Note 2: Typically, for the binding process to be effective, transmitter and receiver should be no more than one meter apart and no other similar devices should be within 10 meters of both during setup.

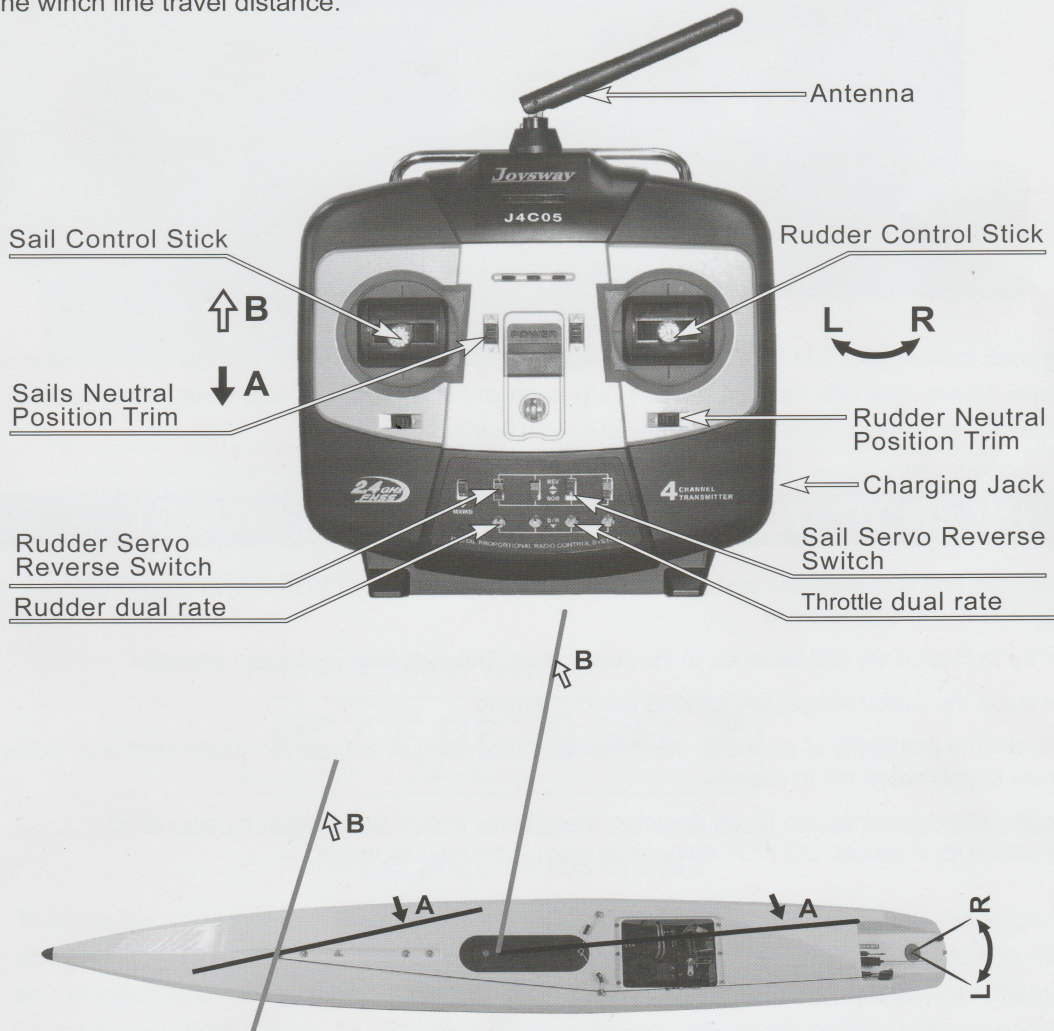
PREPARATIONS FOR SAILING

Before sailing your DF65/95 for the first time, take note of the following:

1. Always turn the transmitter on before the receiver, likewise, turn the receiver off before the transmitter.
2. Check that each sail, rigging rings and fitting is properly installed and adjusted
3. Switch off "MXMD" button on top position, because DF65/95 don't need mix control function.

Following the procedures to check the radio and sailboat's function: (MODE 2 as example)

1. DF65/95 RTR is supplied with 2.4GHz 4CH radio system. For sailing the DF65/95, you will only need 2CH. Please see following function of the transmitter.
 2. For sail control stick, when stick is in the position of A, correspondingly, the main boom and jib boom are in the position of A as shown. When stick is in the position of B, correspondingly, the main boom and jib boom are in the position of B as shown. If this is not the case, simply move the sail servo reverse switch to the other position. You may also adjust the sail servo neutral by pressing the sail neutral position trim button up or down.
 3. For rudder control stick, rudder turn left when rudder control stick is pushed to the left. Rudder turn right when rudder control stick is pushed to the right. If this is not the case, simply move the rudder servo reverse switch to the other position. You may also adjust the rudder servo neutral by pressing the rudder neutral position trim button left or right.
 4. Use supplied plastic screwdriver to adjust the rudder dual rate, this is to adjust the rudder throw angle from the centreline in either direction when the rudder control stick is moved to it's maximum throws. Refer to your DF65/95 boat manual for the rudder throw angle.
 5. Use supplied plastic screwdriver to adjust the throttle dual rate. This is to adjust the winch line travel distance between the fully sheeted in position (for sailing 'close hauled' - close to the wind) and fully sheeted out position (for sailing on a 'run' - sailing in the same direction as the wind with the sails fully out). Refer to your DF65/95 boat manual for the winch line travel distance.



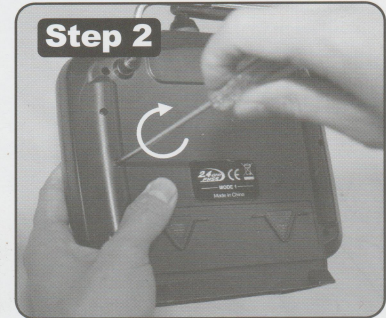
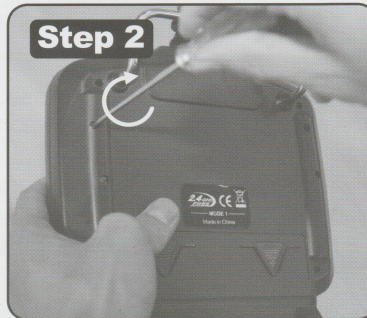
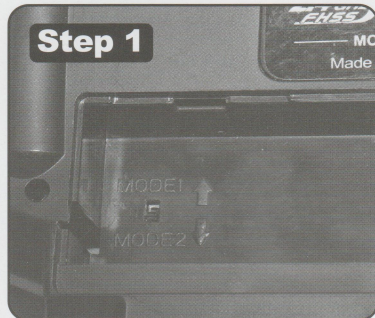
TRANSMITTER MODE SWITCHING

J4C05 2.4GHz 4CH transmitter is supplied with MODE 2 as standard set, If needed, you could simply switch to MODE 1 by easy steps as belowing:

Step 1: Open battery cover, switch MODE button to MODE 1.

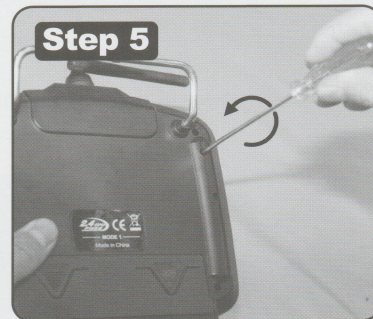
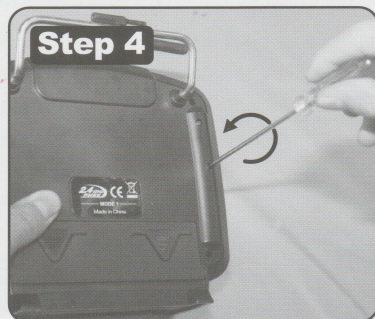
Step 2: Use screwdriver to screw down the up-left screw tightly as photo shown.

Step 3: Screw down the down-left screw as photo shown, but not fully tighten, adjust this screw tightness so as to adjust the throttle stick (right stick) spring tightness as you wanted.



Step 4: Screw off down-right screw completely until the screw head is almost even with back panel.

Step 5: Screw off up-right screw, but not completely. adjust this screw tightness so as to adjust the Elevator stick(left stick) spring tightness as you wanted.



NOTE: If switch back form MODE 1 to MODE 2, firstly switch MODE button to MODE 2 under battery cover, screw off the left two screws, Screw down the right two screws, adjust down-left and up-right screws tightness so as to adjust the Throttle stick and Elevator stick spring tightness as you wanted.

CHARGING(FOR RECHARGEABLE BATTERIES)

The J4C05 transmitter has a charge jack that allows rechargeable AA cells (not included) to be charged in it, using a suitable battery charger.(Output: 6V, Max100mA)

Caution: Never try to charge dry cell batteries in the transmitter. They will leak and could explode!

Caution: Never leave the radio/charger unattended when charging.

Caution: To prevent the possibility of accident, overheating and/or short circuit, always disconnect your battery charger from its power supply when not in use.

Note: When rechargeable batteries are finally depleted (dead) they should be taken to a designated recycling centre for disposal. DO NOT dispose of them in household waste.