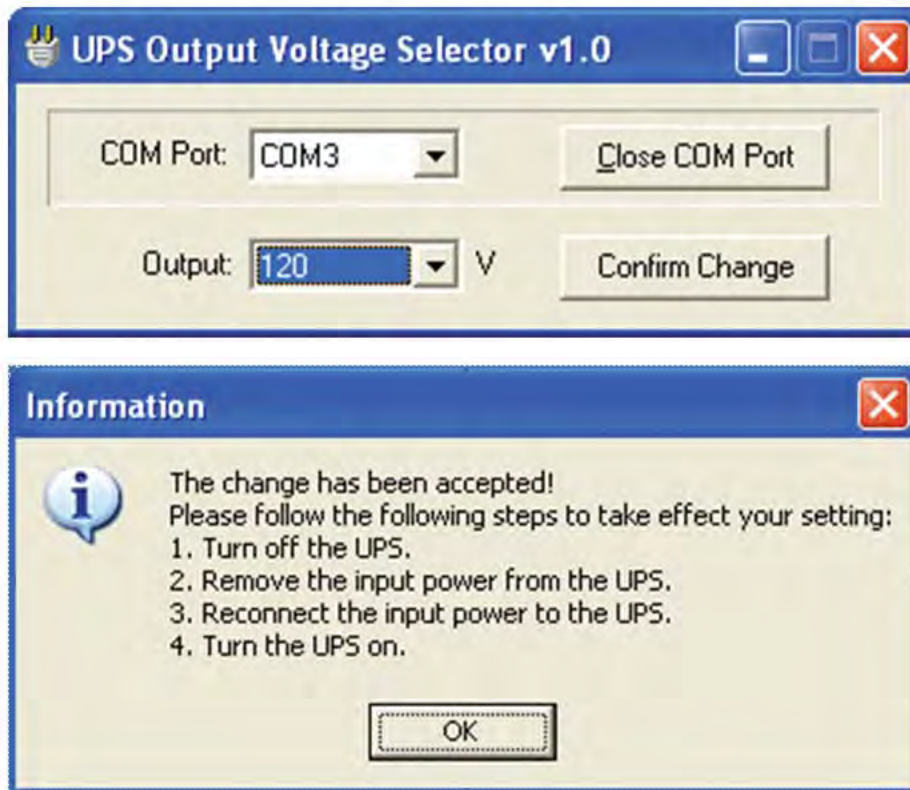


# UPS Voltage Selection Instructions

To change your UPS System's output voltage you will need the following:

- One straight-through serial cable
- A computer with an available serial port
- A download of the Voltage Selector utility, located within the "Support" tab of select "SU" SmartOnline® models

1. The UPS should be powered on with no load attached.
2. Connect the UPS to the computer via a straight-through serial cable.
3. Verify that PowerAlert Software is not running and the SNMPWEBCARD is not installed.
4. Start the Voltage Selector utility and choose the desired settings.
5. Follow the steps that are in the information windows of the Voltage Selector utility.



6. Disconnect the serial cable if not being used for any other functions.

*Note: If the UPS enters bypass mode for any reason, the input voltage will be sent directly to the output on the UPS. If 240V of input when in bypass, the output at the UPS outlets will also be 240V.*

This utility was meant for use with select "SU" SmartOnline® UPS Systems only.

