



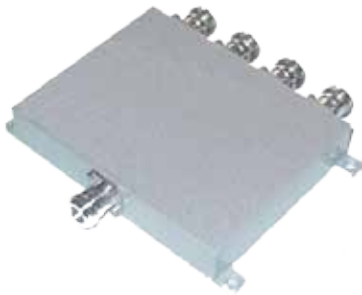
TrueConnect™ - Power Splitter

Model No: XWPS/YYY

Low PIM Power Splitter
[698-2700 MHz]

DESCRIPTION:

Wilkinson design power splitter that offers optimal performance and low PIM specifications.



ADDITIONAL INFORMATION:

Available with different connector options
Wide frequency range
Easy Installation

Specifications	
Frequency Range (MHz)	698-2700
Power Rating, Combining (W)	0.5
Power Rating, Splitting (W)	50
Peak Power (kW)	1
Impedance (Ω)	50
Intermodulation (PIM) 2 X 43 dBm	≤ -153
Isolation @ Frequency (dB)	
698-800 MHz	18
800-2500 MHz	20
2500-2700MHz	18
Operating temperature - °F (°C)	-13 \approx 185 (-25 \approx 85)
Environmental	IP65

Model	Insertion Loss (dB)	Output Isolation (dB)	VSWR	Split Loss (dB)	Weight - lbs
2WPS-LP-X	0.3	0.3	$\leq 1.20:1$	3	0.5
3WPS-LP-X	0.6	0.6	$\leq 1.25:1$	4.8	1.1
4WPS-LP-X	0.6	0.6	$\leq 1.30:1$	6	1.4

PART NUMBER & CONNECTOR OPTIONS:

Part Number Configurator

X= Split ways (2,3,or 4)
YYY= Connector Type
-N N female
-41D 4.1/9.5 Mini DIN Female
-43D 4.3/10 Mini DIN Female