

Features:

- 0-10V/ Potentiometer/10V PWM dimmable
- Constant voltage design
- Universal AC input/ Full range
- IP66 design for indoor or outdoor installations
- Protections: Short circuit/ Overload/ Over voltage/ Over temperature
- Built-in PFC function (PFC>0.98)
- Cooling by free air convection
- Over 85% efficiency



ELED-200-24V

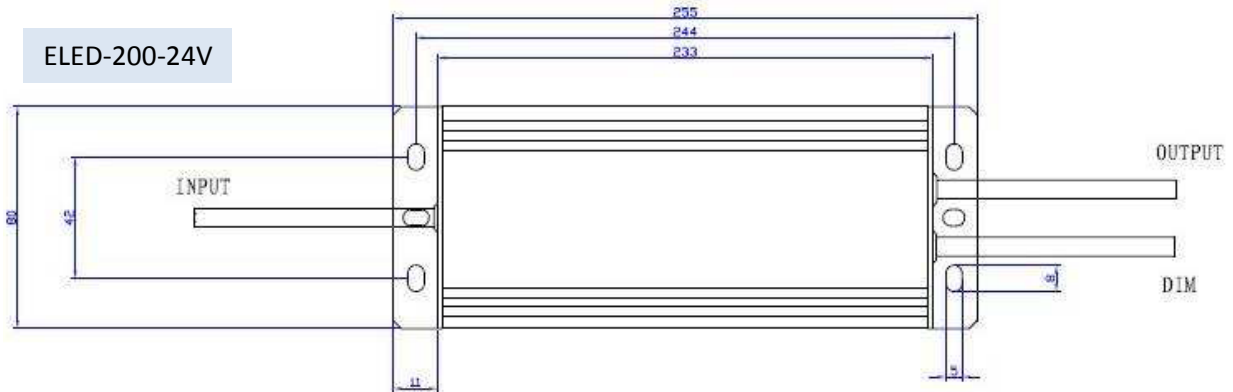
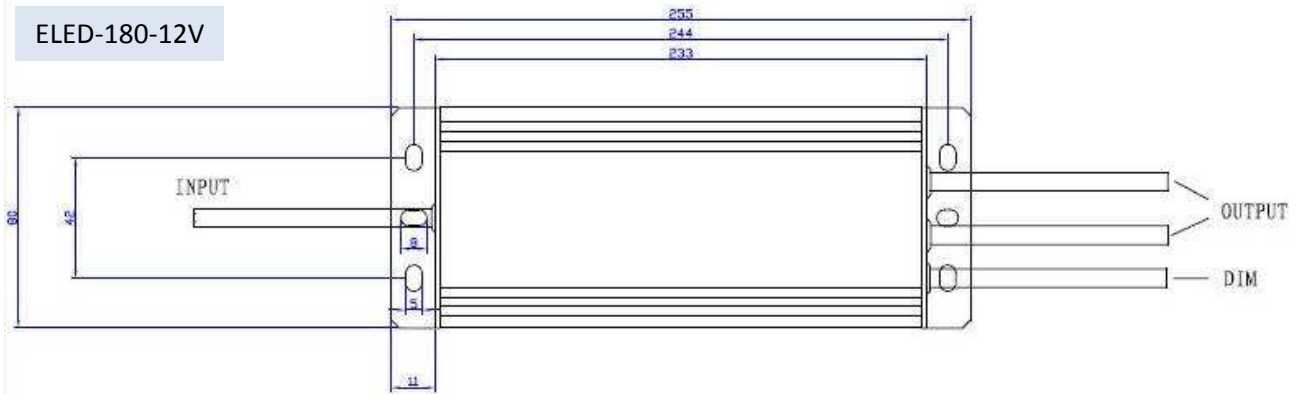


ELED-180-12V

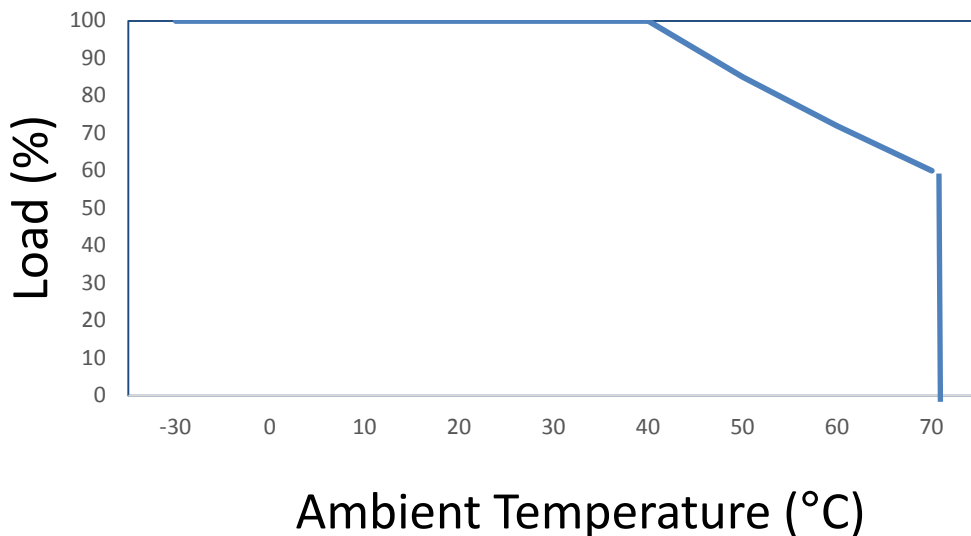


Model	ELED-180-12V	ELED-200-24V	
Output	DC Voltage	12V	24V
	Rated current	15A	8.33A
	Voltage Accuracy	±0.5V	±0.5V
	Rated power	180W	200W
Input	Voltage Range	100-265VAC	
	Frequency Range	47-63HZ	
	Power Factor (Typ.)	PF ≥ 0.98/220V	
	Full Load Efficiency(Typ.)	85%	88%
	AC Current(Typ.)	0.982A/220VAC	1.054A/220VAC
	Leakage current	<0.25mA/220VAC	
Protection	Short Circuit	Hiccup mode, recovers automatically after fault condition is removed.	
	Over voltage	≤280VAC	
	Over temperature	100°C ± 10°C shut down o/p voltage, re-power on to recover	
Environment	Working TEMP.	-40~+60°C	
	Working Humidity	20~95%RH,non-condensing	
	Storage TEMP., Humidity	-40~+80°C,10~95%RH	
	TEMP. coefficient	±0.03%/°C(0~50°C)	
	Vibration	10~500Hz,5G 12min./1 cycle, period for 72min.each along X,Y,Z axes.	
Safety&EMC	Safety standards	EN61347-2-13.IP66	
	Withstand voltage	I/P-O/P:3.75KVAC I/P-FG:1.88KVAC O/P-FG:0.5KVAC	
	Isolation resistance	I/P-O/P I/P-FG O/P-FG:100MΩ/500VDC/25°C/70%RH	
	EMC EMISSION	Compliance to EN55015,EN61000-3-2 (≥ 50%load)	
	EMC IMMUNITY	Compliance to EN61000-4-2,3,4,5,6,8, 11,EN61547,A light industry level	
Others	Dimesnions	255*80*53mm(L*W*H)	
	Packing	1.8Kg; 8pcs/15.5Kg	

Mechanical Specification



Derating Curve



Dimming Operation

- Built-in 3 in 1 dimming function, IP66 rated .Output constant voltage level can be adjusted through output cable by connection a resistance or 1-10V DC or 10V PWM signal between DIM+ and DIM-

Reference resistance value for output voltage control (Typical)

Resistance Value	Single driver	0Ω	10KΩ	20KΩ	30KΩ	40KΩ	50KΩ	60KΩ	70KΩ	80KΩ	90KΩ	100KΩ	OPEN
	Multiple drivers	0Ω /N	10KΩ /N	20KΩ /N	30KΩ /N	40KΩ /N	50KΩ /N	60KΩ /N	70KΩ /N	80KΩ /N	90KΩ /N	100KΩ /N	-----
Percentage of rated current	0%	10%	20%	30%	40%	50%	60%	70%	80%	90%	100%	102~108%	

1-10V/ 0-10V dimmable function for output voltage control (Typical)

Dimming value	0V	1V	2V	3V	4V	5V	6V	7V	8V	9V	10V	OPEN
Percentage of rated current	0%	10%	20%	30%	40%	50%	60%	70%	80%	90%	100%	102~108%

10V PWM signal for output voltage control (Typical): Frequency range: 100Hz-3KHz

Duty value	0%	10%	20%	30%	40%	50%	60%	70%	80%	90%	100%	OPEN
Percentage of rated current	0%	10%	20%	30%	40%	50%	60%	70%	80%	90%	100%	102~108%