

WeLoveleds ELED-180/200-V Series

Triac Dimmable 200W Driver



ELED-200-24V



ELED-180-12V

Features:

- 0-10V/Potentiometer/10VPWM dimmable
- Constant voltage design
- Universal AC input/Full range
- IP66 design for indoor or outdoor installations
- Protection: Short circuit/Overload/Over voltage/Over temp.
- Built-in PFC function (PFC>0.98)
- Cooling by free air convection
- Over 83% efficiency

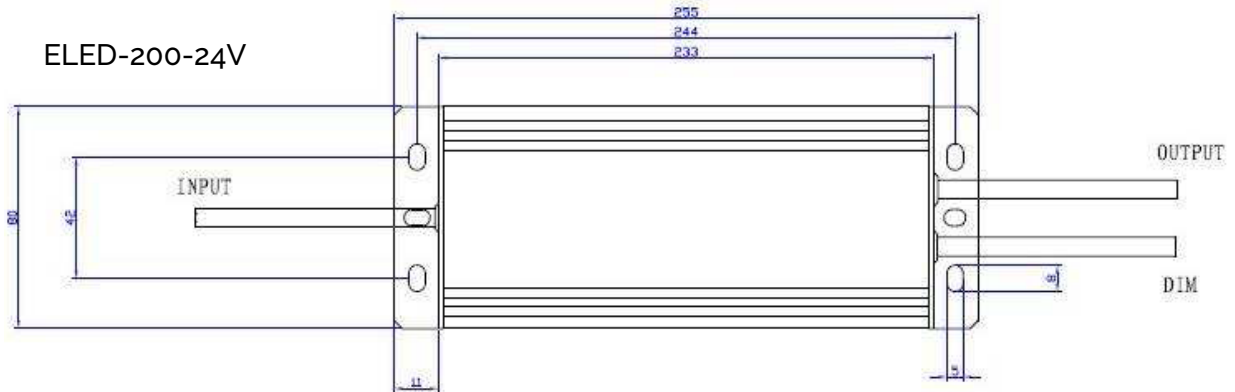
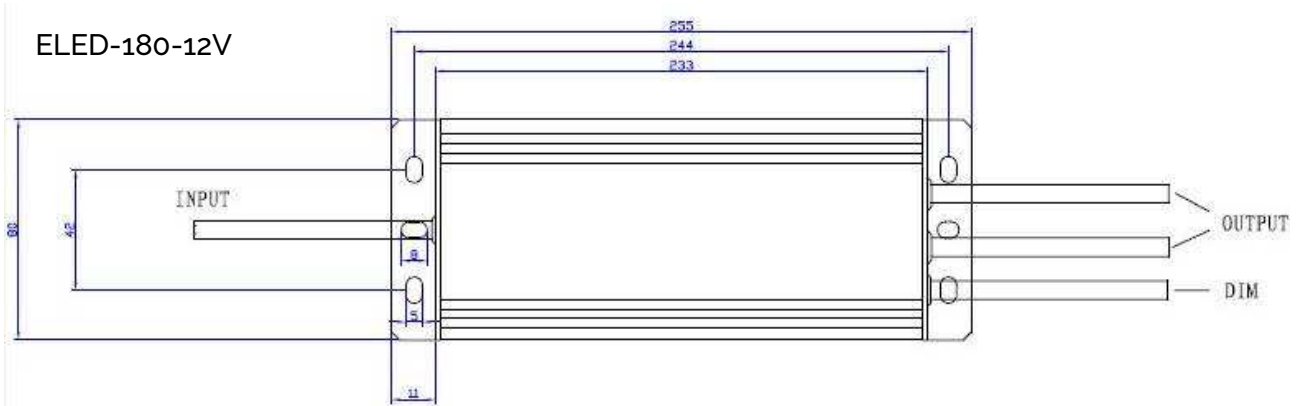


Model		ELED-180-12V	ELED-200-24V
Output	DC Voltage	12V	24V
	Rated Current	15A	8.33A
	Voltage Accuracy	±0.5V	±0.5V
	Rated Power	180W	200W
Input	Voltage Range	100-265VAC	
	Frequency Range	47-63HZ	
	Power Factor (Typ.)	PF ≥ 0.98/220V	
	Full Load Efficiency (Typ.)	83%	88%
	AC Current (Typ.)	0.982A/220VAC	1.054A/220VAC
	Leakage Current	<0.25mA/220VAC	
Protection	Short Circuit	Hiccup mode, recovers automatically after fault condition is removed.	
	Over Voltage	≤280VAC	
	Over Temperature	100°C±10°C shut down o/p voltage, re-power on to recover	
Environment	Working TEMP.	-40~+60°C	
	Working Humidity	20~95%RH, non-condensing	
	Storage TEMP., Humidity	-40~+80°C, 10~95%RH	
	TEMP. Coefficient	±0.03%/°C(0~50°C)	
	Vibration	10~500Hz, 5G 12min./1 cycle, period for 72min. each along X,Y,Z axes.	
Safety & EMC	Safety Standards	EN61347-2-13, IP66	
	Withstand Voltage	I/P-O/P: 3.75KVAC I/P/FG: 1.88KVAC O/P-FG: 0.5KVAC	
	Isolation Resistance	I/P-O/P I/P-FG O/P-F/G: 100MΩ/500VDC/25°C/70%RH	
	EMC EMISSION	Compliance to EN55015 EN61000-3-2 (≥ 50%load)	
	EMC IMMUNITY	Compliance to EN61000-4-2,3,4,5,6,8,11, EN61547,A light industry level	
Others	Dimensions	255* 80* 53mm (L*W*H)	
	Packing	1.8Kg; 8pcs/15.5Kg	

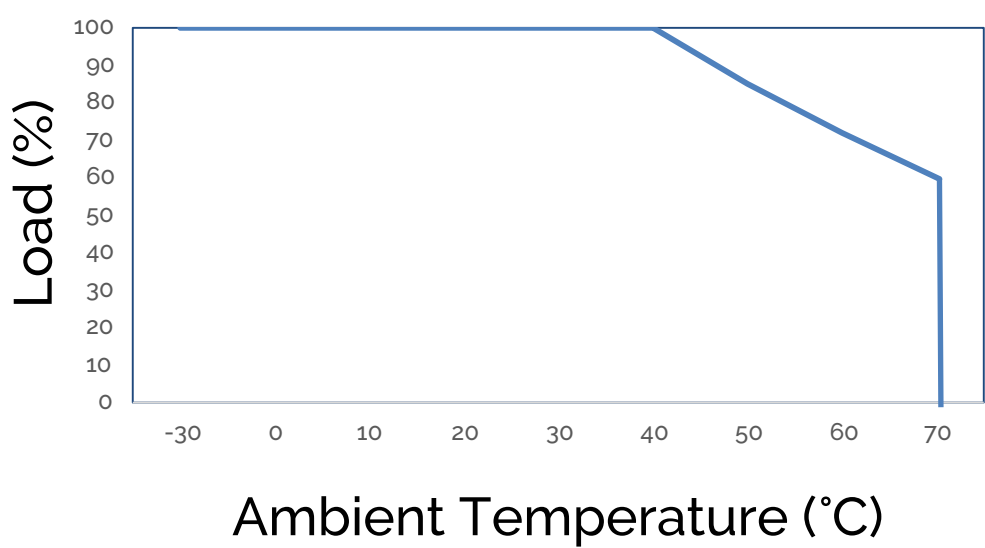
www.weloveleds.co.uk leds@thesigngroup.co.uk 01132524706

WeLoveLEDS.co.uk (part of The Sign Group) Victoria Works Bruntcliffe Road Morley Leeds West Yorkshire LS27 0LF

Mechanical Specification



Derating Curve



Ambient Temperature (°C)

Dimming Operation

- Built-in 3 in 1 dimming function, IP66 rated. Output constant, voltage level can be adjusted through output cable by connection a resistance or 1-10VDC or 10VPWM signal between DIM+ and DIM-

Reference resistance value for output voltage control (Typical)

Resistance Value	Single Driver	0Ω	10KΩ	20KΩ	30KΩ	40KΩ	50KΩ	60KΩ	70KΩ	80KΩ	90KΩ	100KΩ	OPEN
	Multiple Drivers	0Ω ∩	10KΩ ∩	20KΩ ∩	30KΩ ∩	40KΩ ∩	50KΩ ∩	60KΩ ∩	70KΩ ∩	80KΩ ∩	90KΩ ∩	100KΩ ∩	----
Percentage of rated current		0%	10%	20%	30%	40%	50%	60%	70%	80%	90%	100%	102~108%

1-10V/0-10V dimmable function for output voltage control (Typical)

Dimming Value	0V	1V	2V	3V	4V	5V	6V	7V	8V	9V	10V	OPEN
Percentage of rated current	0%	10%	20%	30%	40%	50%	60%	70%	80%	90%	100%	102~108%

10VPWM signal for output voltage control (Typical): Frequency: 100Hz-3KHz

Duty Value	0%	10%	20%	30%	40%	50%	60%	70%	80%	90%	100%	OPEN
Percentage of rated current	0%	10%	20%	30%	40%	50%	60%	70%	80%	90%	100%	102~108%