



**SHORELINE 4X4 INSTRUCTIONS FOR NISSAN
NAVARA 2021 ON
EXTREME SERIES BULLBAR**



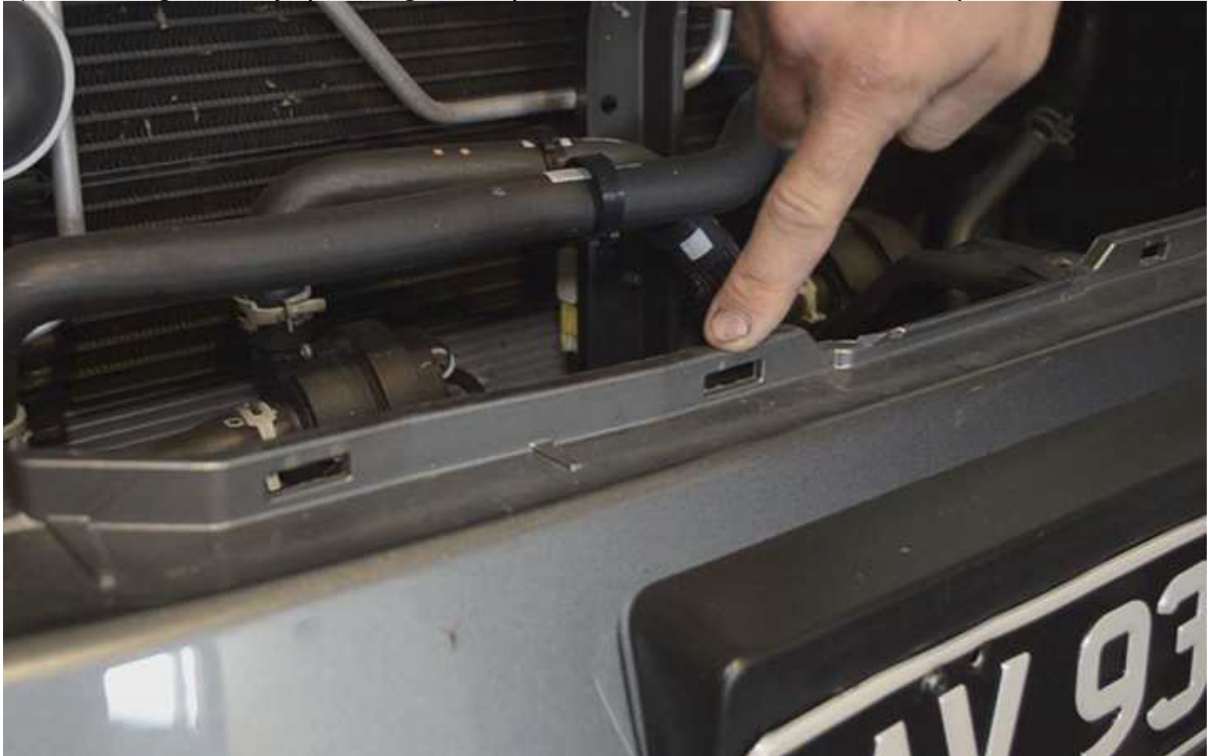
**www.slx4x4.com.au (08) 9444 2946
126 Hector St W - OSBORNE PARK W.A. 6017**

1. With the bar unwrapped, you're ready to remove the grill.



- 2) NP300 HAS VERY DELICATE TABS HOLDING THE GRILL IN PLACE. You must not pull or twist them. They are to be pressed in order for the clip to flatten so you can pull it through its holder.

3) Pull the grill away, pushing the clips where it attaches to the bumper.



4) Unscrew the top of the bumper.



5) Undo the bolts holding the lower part of the bumper as shown.



6) Remove the clips holding the inner wheel liner to the bumper.



7) Pull away the wheel liner to unbolt the bumper from the front quarter panels



8) Carefully pop the bumper away from the wheel arches and you should be able to pull the whole bumper off now, taking care to disconnect the fog light wiring



9) Remove the plastic white mouldings underneath the headlights. & side mouldings



10) Unbolt and remove the front impact bar. & lower air dams





11) There are some hard to find clips that can be popped off with a flat head to remove the rest of the lower air dam



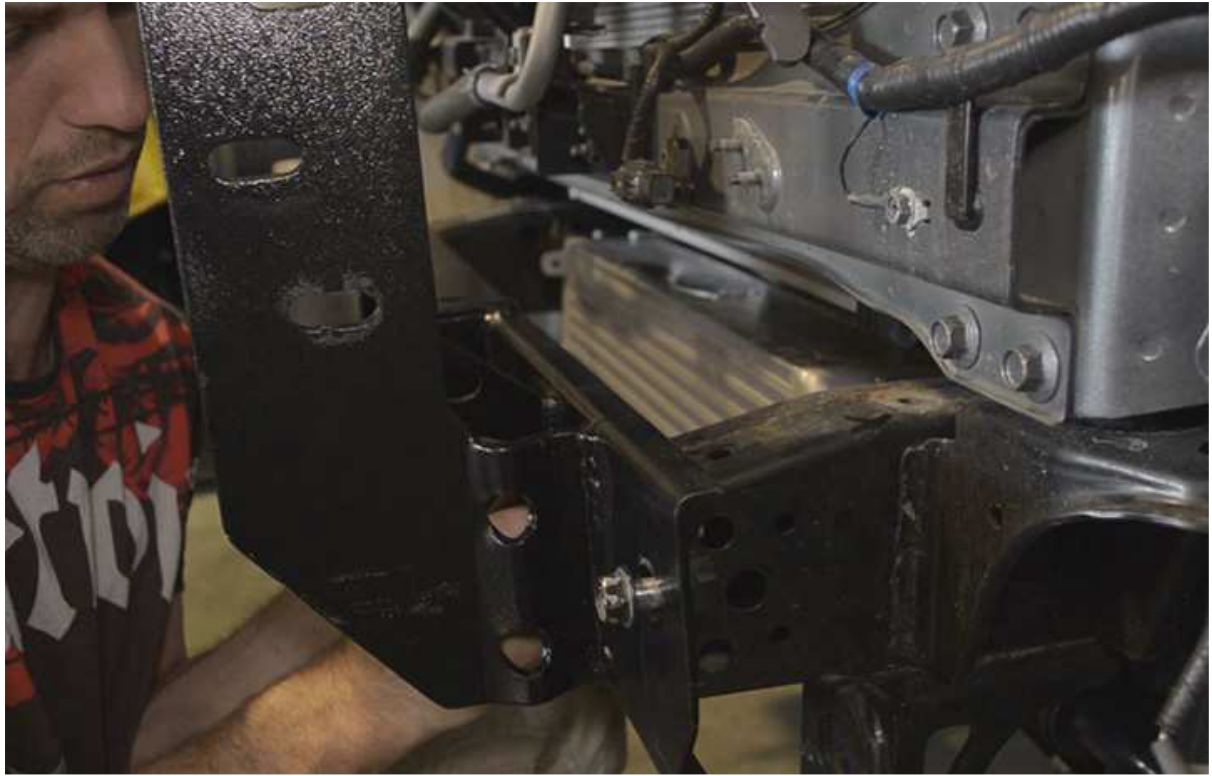
12) Remove the two curved metal brackets, these will foul on the bar bracket if not removed.



13) Mark and trim the factory air dams as shown.



14) Install the recovery points before you Fit and bolt up the bar cradle using the factory bolts.



15) Make up the support bracket and fit it to the chassis as shown. See the second photo to ensure that the support brackets are fitted correctly

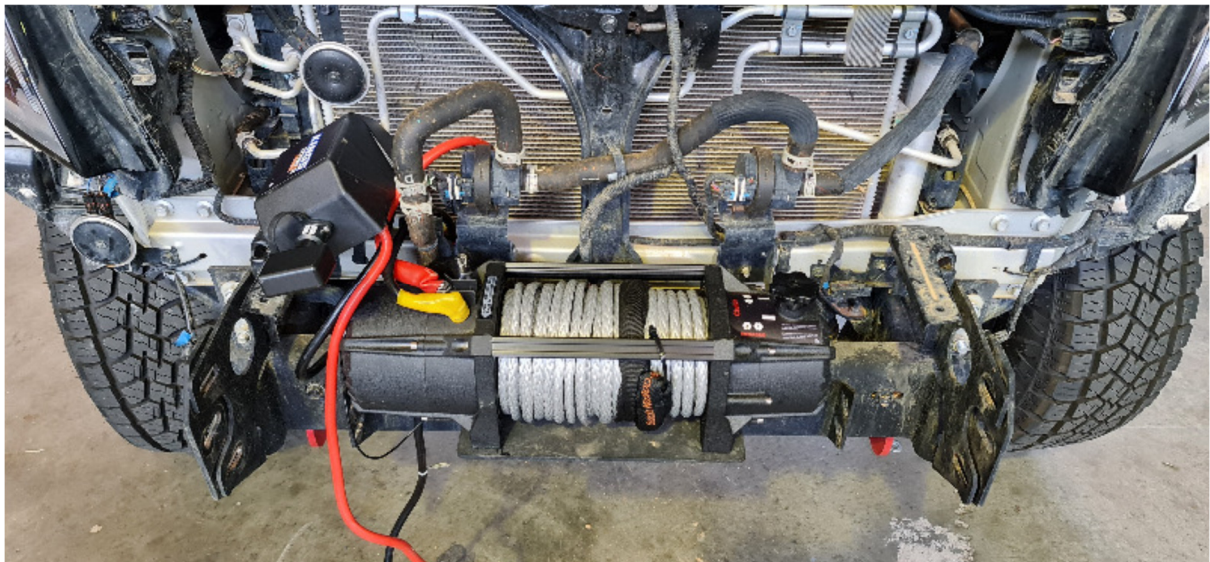


16) Trim and secure the inner wheel liner. You may wish to fit bar mark remove and cut to follow the contour of the side wings.

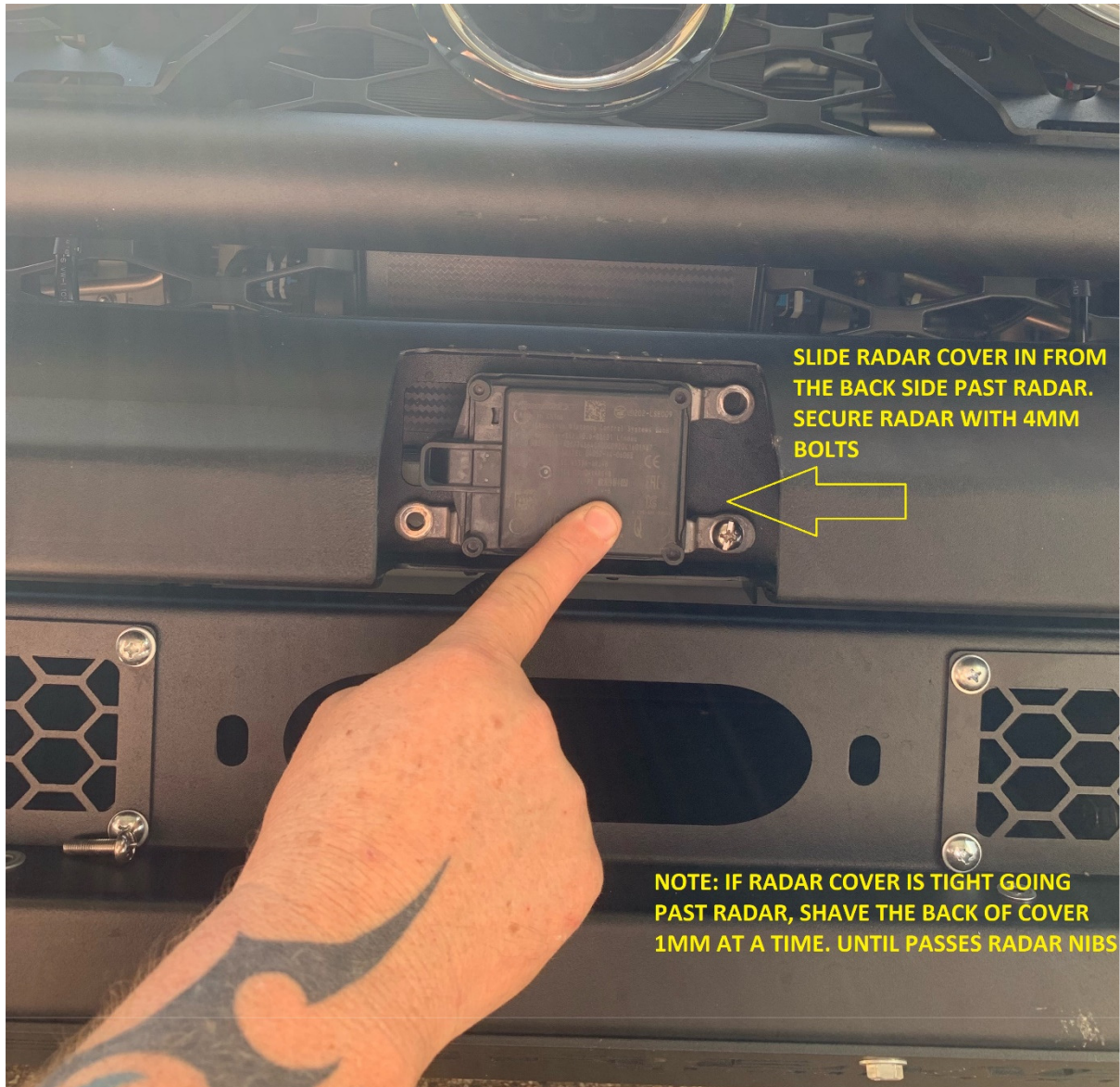


Installing a winch

You are required to remove brackets holding already relocated Radar, you can install winch control box as shown on the grill outer tabs



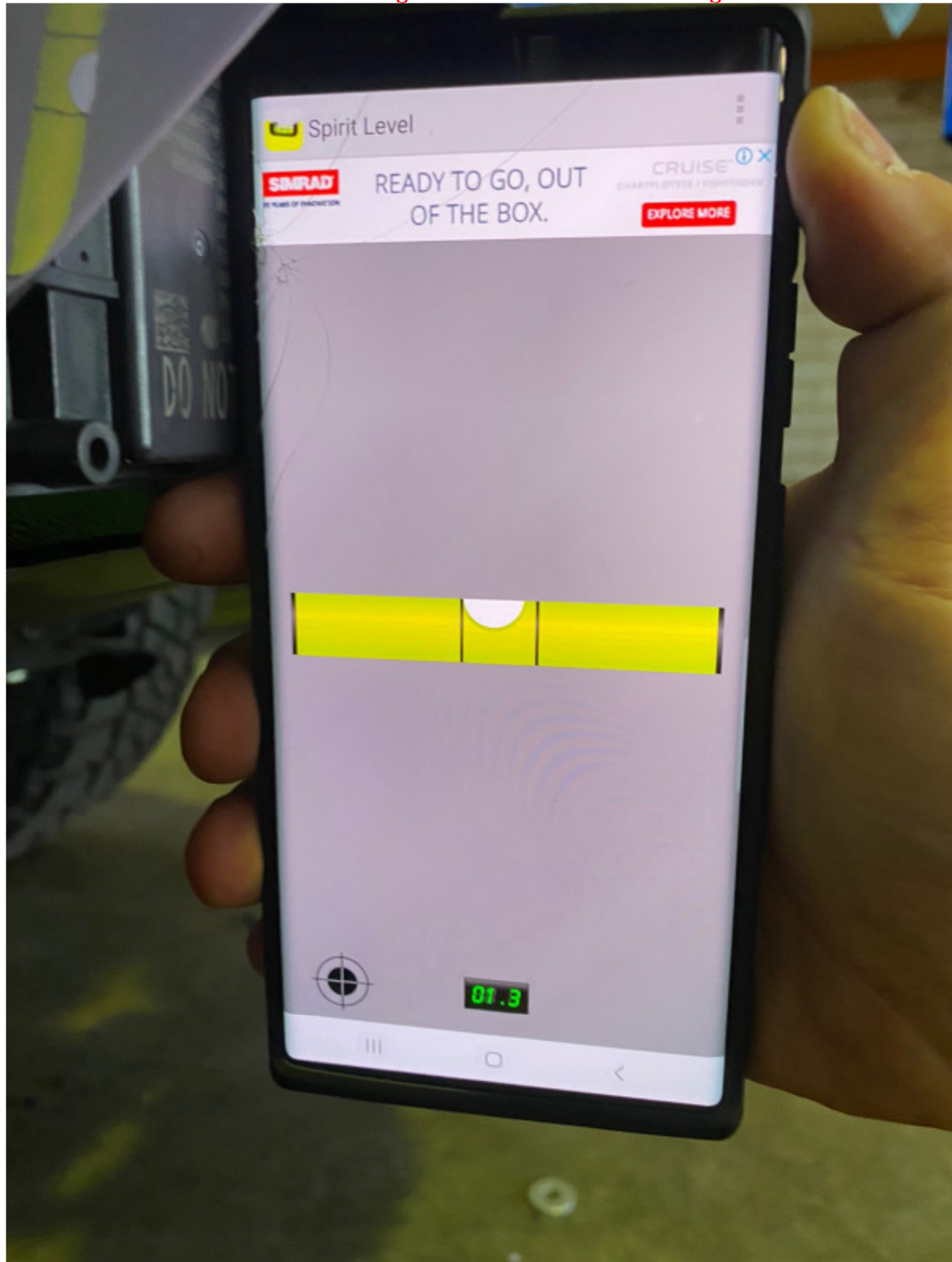
17) remove the radar from original location and its supporting brackets. Relocate the radar into the bulbar using m4 bolts.



18) You must maintain sufficient gap between the bulbar and guards/headlights. The bar must have 10-15mm gap minimum and if you take note of the plastic bulge under the corner of the headlight the bar must sit in front of this to avoid movement up/down and catching that plastic which will break your headlight.

19) Once you have finished the alignment of the bulbar you must check the radar level. Download spirit level app on your phone which will give you degree in value.

See below must be between 0-2degree. We recommend 1.5degree down.



20) installing the radar cover.

The radar cover is tight fit, first check to see if you can clear the corners of the radar with cover by sliding in from the back, if you can not check you are using 4mm bolts to ensure radar is sitting low as possible.

In some installs you are required to trim the back of the cover to allow it pass over the radar.



Its designed tight so once in place its locked in, if you wish you can apply a couple drops super glue if you find radar cover is not locking in place.

20) installing the number plate brackets.

The bar comes with 2x L shape brackets, they should be installed so the number plate sits as far back into the bar as possible to avoid the radar. If you have a winch you need to purchase a flip up number plate bracket which can be mounted to either bar directly or the L brackets

Note : You can colour code your radar cover, we sell black & white covers and also for additional cost can get clear covers in acrylic in which you colour match the back of it to avoid paint scratching off it.



end