



SHORELINE 4X4 INSTRUCTIONS

EXTREME SERIES BULLBAR

1. Auto electrical work should be carried out by a competent person. Vehicle wire colours are listed as a guide only and may vary on some makes and models.
2. The function of each wire should be checked before any connections are made.
3. All wires tapped into should be soldered and then insulated with electrical tape or heat shrink.
4. Grounding/Earth points must always be connected to the factory grounding points, not to the battery negative terminal. See owner's manual.
5. Using only a LED test light, test all electrical components of the vehicle before and after wiring.
This is to ensure everything works correctly.
6. the installation of large or light-coloured antennas or aerials to the front of a bull bar as this may cause the lane departure system to malfunction.

Only a competent person should perform accessory installations. It is the responsibility of this person to ensure correct fitment.

- Whilst working on this vehicle, always use appropriate safety equipment.
- Read and understand instructions fully before commencing fitment.
- Check the hardware supplied against the contents list on the following pages.
- Do not use this product for any vehicle make or model other than specified in these instructions.
- This product and or hardware must not be modified in any way. Do not remove labels from this product.
- Recording the batch number on the customer's job card is good practice for future reference, or complete the information below and file with customer job card.

Care

- To maintain the finish of the product, wash regularly using a PH neutral car wash, hose off and chamois dry.
- Do not use acidic or alkaline cleaners.
- Plastic components can be maintained with a silicone spray or similar (non-acidic or alkaline based).
- Ironman 4x4 recovery points are FEA tested during design and destruction tested during development
- to establish the Working Load Limits (WLL).

- recovery points have been designed as a matching pair, supplied as right and left sides for vehicle-specific fitment.
- Do not use this recovery point for any other vehicle make or model other than the one intended.
- Do not alter or modify the recovery point in any way. Doing so may compromise the strength and integrity of the recovery point.
- **It is advised to use an equalising or bridle strap. Failure to do so correctly can result in recovery point fatigue or bending and void your warranty.**
- Never use a single recovery point combined with a side load pull.
- Recovery Points are designed for a straight-line pull, by pulling on an angle or sideways pull may result in a reduction of the WLL.



Shoreline 4x4

Extreme Series Bullbar X-1

Install notes: mux 2017 on has softer body mounts than other cars, movement between the Chassis and body can be anywhere from 15-20mm. We recommend a minimum 10-15mm gap and the use of pinch weld (not supplied).

May require Slight Grille Trim in order to get bar close to car. If grill sits close to bar metal use adhesive tape for protection of paint

1. Remove number plate and grill
2. Remove 4 clips on centre upper bull bar
3. Remove clips under wheel arch that attach to bull bar
4. Remove clips and screws under bull bar
5. Remove small bash plate
6. Gently pull at edge of bumper to release bumper from under head lights
7. Remove bumper and disconnect fog light from loom
8. Remove white plastics from edge of body next to guard
9. Remove front lower chassis support bar
10. Remove inner guard metal brackets
11. Remove metal bracket from front chassis
12. Remove upper bumper support bar (be careful of all sensors) keep aside.
13. Install winch cradle making sure it is central along with chassis support collar
14. Drill out 4 spot welds from previously removed upper support bar (see picture)
15. Paint and reassembled with 10mm bolts as shown in picture.
16. Install grill support and clip in sensor.
17. Fit bull bar and tighten – see final images last pages
18. Refit grill and number plate
19. Fit bash plate
20. Wiring in fog lights and tighten & Trim inner guards to suit



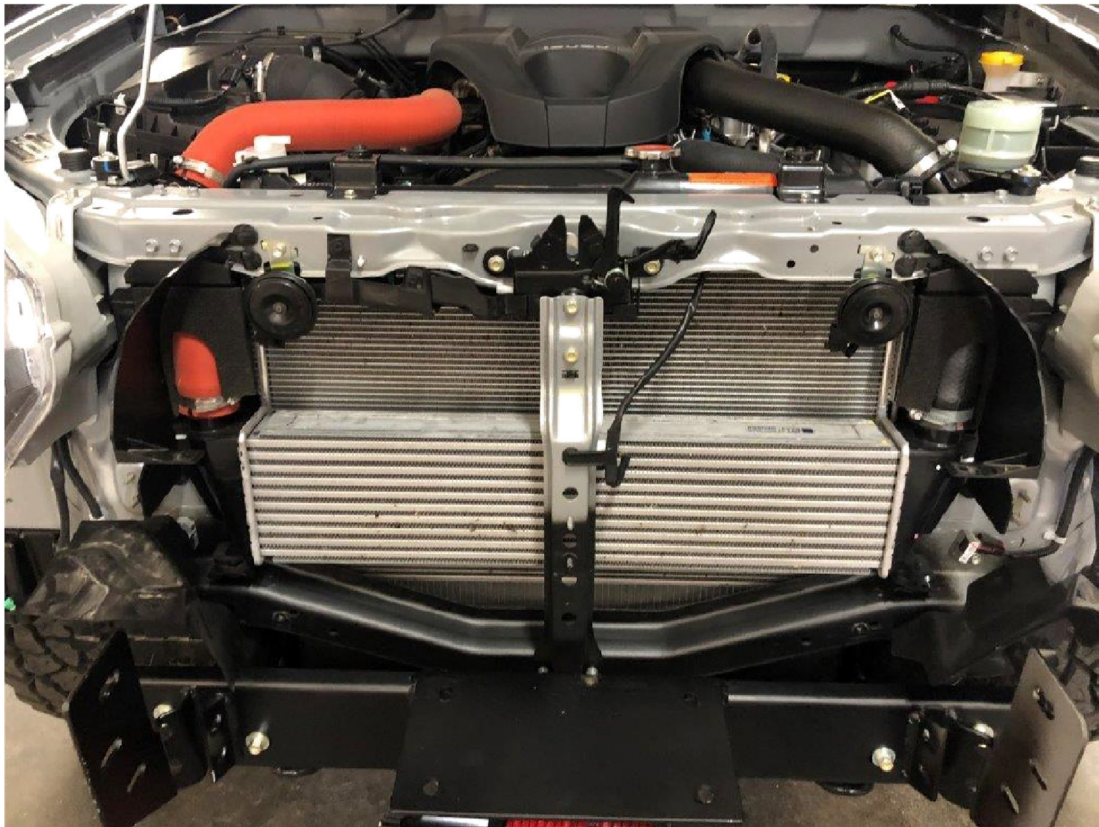
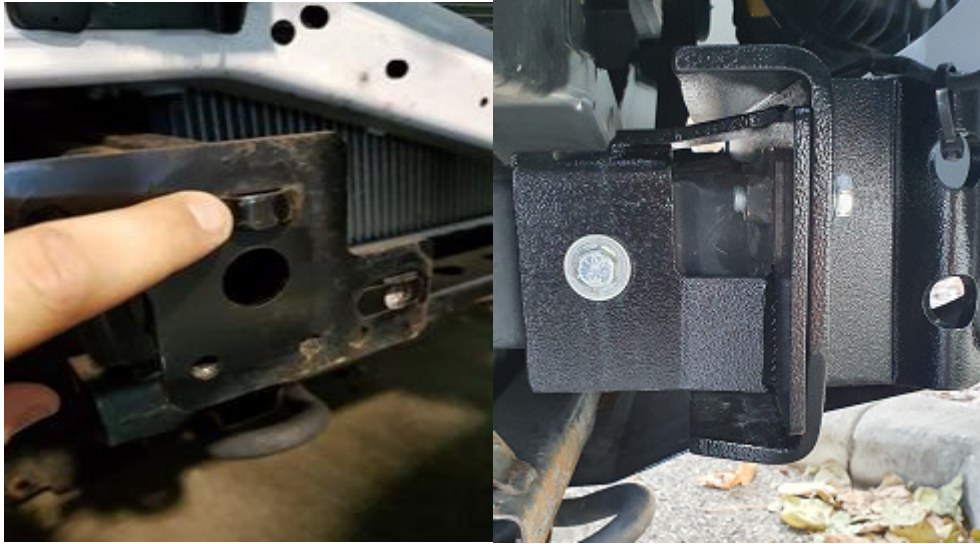


depending on how you align your bar you may find metal clash towards the back lip directly under the gaurd, you can remove 10mm of the white metal, approx 10mm down for approx 30-40mm

Suggest you remove before installation of the bar.



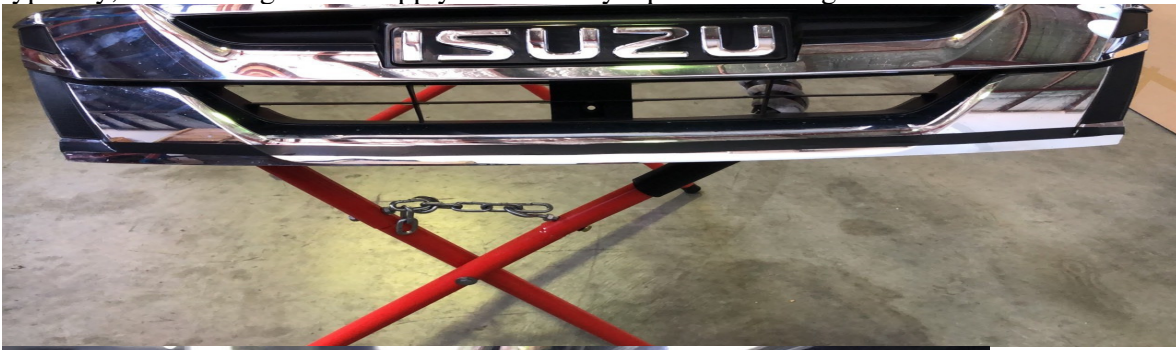
If you need further adjustment left to right you may need to flatten the bump on the chassis front member & install the Chassis collar bracket.



We recommend the use of 10mm foam on the sides between the bar and the car to help get the bar even.



Typically, we cut the grille and apply some flat style pinch weld to get the bar nice and close to the car





We recommend rubber pinch weld available on our store for \$29 or clark rubber to provide infill between bulbar and guards/headlights.