

Guide visuel et zones d'impression sur T-Shirts



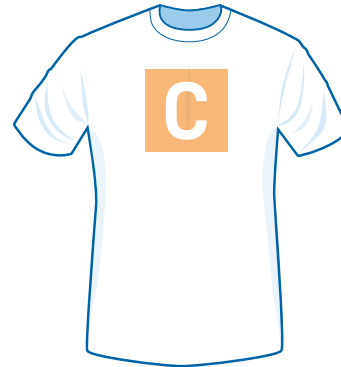
FULL FRONT

MAX IMPRINT AREA: 12" X 14"



MEDIUM FRONT

IMPRINT AREA: 8" X 8"



CENTER CHEST

IMPRINT AREA: 5" X 5"



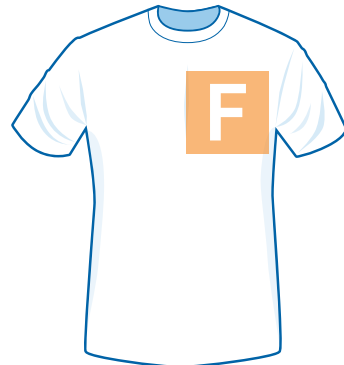
ACROSS CHEST

IMPRINT AREA: 4" X 12"



RIGHT CHEST

IMPRINT AREA: 5" X 5"



LEFT CHEST

IMPRINT AREA: 5" X 5"



RIGHT SLEEVE

IMPRINT AREA: 3.5" X 3.5"



LEFT SLEEVE

IMPRINT AREA: 3.5" X 3.5"



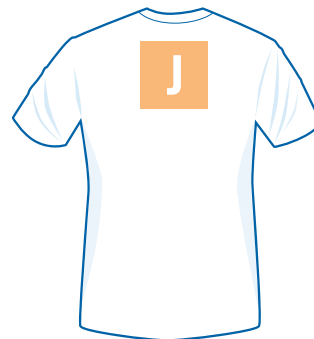
FULL BACK

MAX IMPRINT AREA: 12" X 14"



MEDIUM BACK

IMPRINT AREA: 8" X 8"



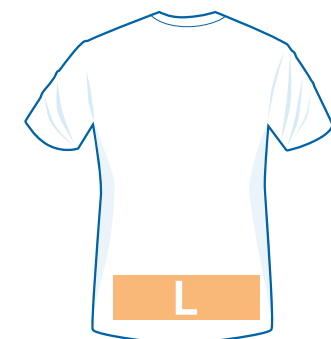
LOCKER PATCH AREA

IMPRINT AREA: 4" X 4"



ACROSS SHOULDERS

IMPRINT AREA: 4" X 14"



BOTTOM BACK

IMPRINT AREA: 4" X 14"

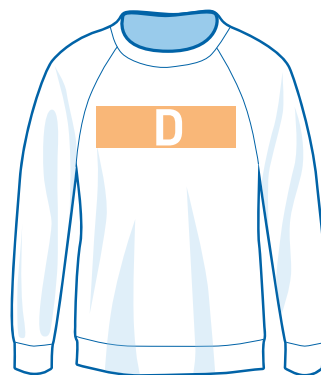
Guide visuel et zones d'impression sur Sweaters



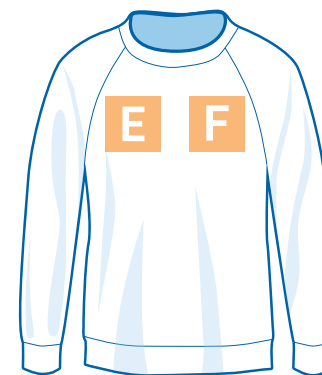
FULL FRONT
MAX IMPRINT AREA: 12" X 14"



MEDIUM FRONT
IMPRINT AREA: 8" X 8"



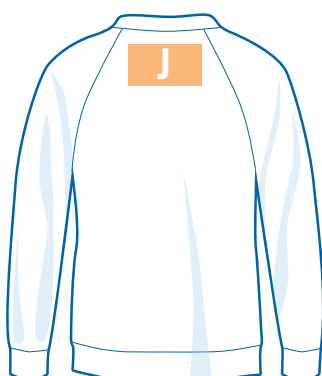
CENTER CHEST
IMPRINT AREA: 5" X 5"



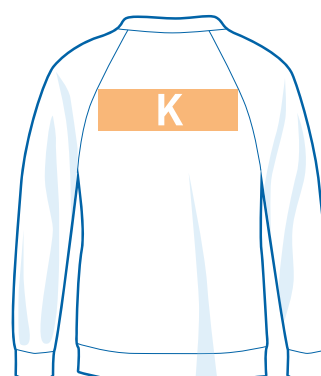
RIGHT or LEFT CHEST
IMPRINT AREA: 4" X 12"



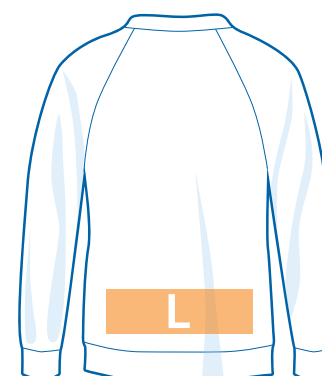
FULL BACK
MAX IMPRINT AREA: 12" X 14"



CENTER BACK
IMPRINT AREA: 5" X 5"



MEDIUM BACK
IMPRINT AREA: 8" X 8"



BOTTOM BACK
IMPRINT AREA: 4" X 12"

Guide visuel et zones d'impression sur Hoodies



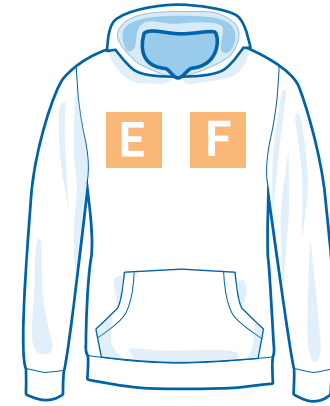
FULL FRONT
MAX IMPRINT AREA: 12" X 14"



MEDIUM FRONT
IMPRINT AREA: 8" X 8"



CENTER CHEST
IMPRINT AREA: 5" X 5"



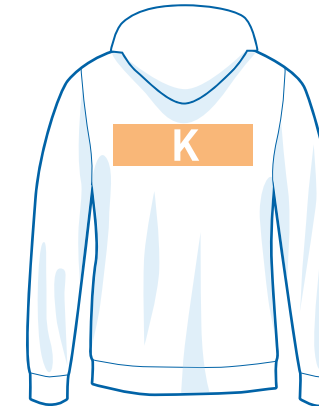
RIGHT or LEFT CHEST
IMPRINT AREA: 4" X 12"



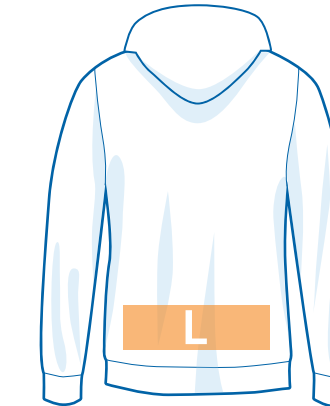
FULL BACK
MAX IMPRINT AREA: 12" X 14"



MEDIUM BACK
IMPRINT AREA: 8" X 8"



CENTER BACK
IMPRINT AREA: 5" X 5"



BOTTOM BACK
IMPRINT AREA: 4" X 12"