



STRÄVA GOLD: QUALITY ASSURANCE REPORT

Product: Regular Strength (10mg) Medium Roast

Variants: Whole Bean & Ground Coffee

Master Batch: MB-RSWB-012



QUALITY HEMP

Safe, Effective CBD

Sträva is committed to delivering safe, effective CBD products and partners with leading suppliers to ensure strict quality standards are met. Sträva's broad-spectrum hemp extracts are independently tested to be clean and free of contaminants.

- ✓ Broad-Spectrum Natural Hemp
- ✓ Organic & USA Grown
- ✓ Tested Free of Pesticides
- ✓ Tested Free of Heavy Metals
- ✓ Tested Free of Residual Solvents
- ✓ Tested Free of Mycotoxins

QUALITY COFFEE

100% Arabica Beans

Quality coffee begins at farm level with sustainable and conscious growing practices. Sträva sources beans from select farms that deliver superior specialty-grade coffees which exceed our requirements for clean & healthy coffee.

- ✓ Top 5% of Global Beans
- ✓ Organically Farmed
- ✓ Non-GMO
- ✓ Shade Grown
- ✓ Tested Free of Pesticides
- ✓ Tested Free of Heavy Metals
- ✓ Tested Free of Mycotoxins

VERIFIED PRODUCTS

The Perfect Cup

All Sträva's Peace & Wellness products undergo third-party testing to ensure they contain just the right amount of CBD and other desired elements. Have confidence that you're getting exactly what you expect in each batch of Sträva Craft Coffee.

- ✓ Certificate of Analysis (Attached)
- ✓ Tested free of THC
- ✓ Small Batch Roasted
- ✓ Cupped for Quality
- ✓ Verified Clean Coffee
- ✓ Verified Low Acid
- ✓ Fresh, Flavorful & Smooth

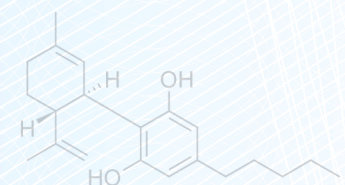
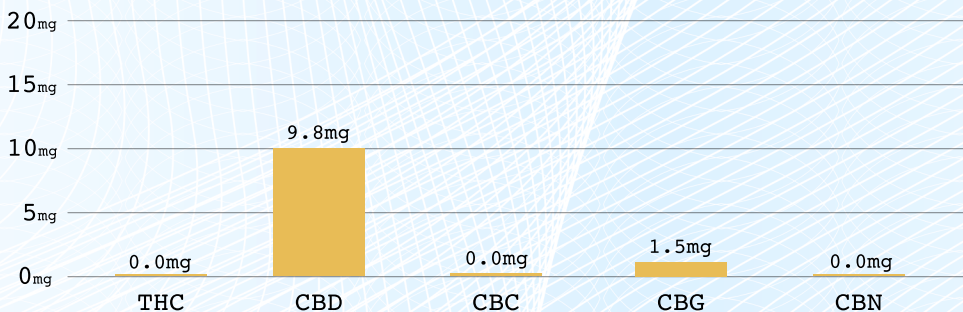
INFUSED PRODUCT VERIFICATION SUMMARY

Master Batch: MB-RSWB-012

Kaycha Labs Sample: DE11201002-007

Specification (mg/serving)	Cannabinoid	Measurement (mg/grams)	Conversion (g/serving)	Cannabinoid Profile (mg/serving)	QA
0.00mg	THC	0.00mg/g	14.0g/s	0.0mg THC	PASS
10.00mg	CBD	0.70mg/g	14.0g/s	9.8mg CBD	PASS
0.00mg	CBC	0.00mg/g	14.0g/s	0.0mg CBC	PASS
1.00mg	CBG	0.11mg/g	14.0g/s	1.54mg CBG	PASS
0.00mg	CBN	0.00mg/g	14.0g/s	0.0mg CBN	PASS

Total Cannabinoid Content: 10.9mg Per Serving



Results are shown in milligrams per serving of coffee based on standard brew recommendations and portion sizes. Actual serving values may vary based on preparation method, portioning and equipment.

Reviewed & Verified By:

[Signature] 12/25/21
Signature Date



Certificate of Analysis

Sample: DE11201002-007
Harvest/Lot ID: Sample A - RSMRWB - A
Batch#: N/A
Seed to Sale# 1A4000B00010D25000000940
Batch Date: N/A
Sample Size Received: 30 gram
Total Weight/Volume: N/A
Retail Product Size: 14 gram
Ordered : 11/30/21
sampled : 11/30/21
Completed: 12/03/21
Sampling Method: SOP-024

Dec 06, 2021 | Strava Craft Coffee, Inc.

License # 405R-00011
2452 S. Trenton Way
Denver, CO, 80231, US



PASSED

Page 1 of 1




PRODUCT IMAGE



SAFETY RESULTS

 Pesticides NOT TESTED	 Heavy Metals NOT TESTED	 Microbials NOT TESTED	 Mycotoxins NOT TESTED	 Residuals Solvents NOT TESTED	 Filtration NOT TESTED	 Water Activity NOT TESTED	 Moisture NOT TESTED	 Homogeneity NOT TESTED	 Terpenes NOT TESTED
---	---	---	---	---	---	---	---	--	---

CANNABINOID RESULTS

 Total THC ND TOTAL THC/Container :0 mg	 Total CBD 0.07% TOTAL CBD/Container :9.8 mg	 Total Cannabinoids 0.081% TOTAL Cannabinoids/Container :11.34 mg
--	--	---

CBDV	CBDA	CBG	CBD	CBDA	THCV	CBGA	CBN	EXO-THC	CBQ	D9-THC	D8-THC	CBL	THCVA	CBC	D10-THC	CBNA	THCA	CBCA	CBLA	THC-O-ACETATE	
ND	ND	0.011	0.07	ND	ND	ND	ND	ND	ND	ND	ND	ND	ND	ND	ND	ND	ND	ND	ND	ND	ND
LOD	0.00265237	0.00070559	0.00219044	0.00333396	0.00125116	0.00205806	0.00192419	0.00183167	0.00401072	0.0148	0.000847945	0.00268886	0.000921807	0.000717378	0.00286194	0.000534	0.000910194	0.000458461	0.00210199	0.00116619	0.003403

Cannabinoid Profile Test

Analyzed by: 8 Weight: 1.0367g Extraction date: 12/01/21 03:12:47 Extracted By: 1642

Analysis Method -SOP-020 (R15) Reviewed On - 12/03/21 10:54:53 Batch Date : 12/01/21 10:39:03
Analytical Batch -DE002726POT Instrument Used : Agilent 1100 "Liger" Running On : 12/01/21 19:11:59

Reagent	Reagent	Dilution	Consums. ID	Consums. ID
101121.10	102221.R05	20	07051275	923C4-923AK
113021.R12			1119999	5079-525C6-525E
112921.01			BG045	
120121.R09			R1KB34782	
102721.R07			298076054	
120121.R10			12211-108CC-108	

Full spectrum cannabinoid analysis utilizing High Performance Liquid Chromatography with DAD detection (HPLC-UV). Method SOP-022 (R13) for reporting. Lower limit of linearity for all cannabinoids is 1 mg/L.

Label Claim - PASSED

Analyte	LOD	Units	Result
TOTAL CBG	0.001	mg	1.54
TOTAL CBN	0.001	mg	ND

This report shall not be reproduced, unless in its entirety, without written approval from Kaycha Labs. This report is an Kaycha Labs certification. The results relate only to the material or product analyzed. Test results are confidential unless explicitly waived otherwise. Void after 1 year from test end date. Cannabinoid content of batch material may vary depending on sampling error. IC=In-control QC parameter, NC=Non-controlled QC parameter, ND=Not Detected, NA=Not Analyzed, ppm=Parts Per Million, ppb=Parts Per Billion. Limit of Detection (LoD) and Limit of Quantitation (LoQ) are terms used to describe the smallest concentration that can be reliably measured by an analytical procedure. RPD=Reproducibility of two measurements. Action Levels are State determined thresholds variable based on uncertainty of measurement (UM) for the analyte. The UM error is available from the lab upon request. The "Decision Rule" for the pass/fail does not include the UM. The limits are based on F.S. Rule 64-4.310.

Stephen Goldman
Lab Director
State License #
405R-00011 405-00008
ISO Accreditation # 4331.01


Signature

12/03/21
Signed On