



# STRÄVA GOLD: QUALITY ASSURANCE REPORT

**Product:** Intro Strength (4mg) Medium Roast

**Variants:** Whole Bean & Ground Coffee

**Master Batch:** MB-ISWB-012



## QUALITY HEMP

### Safe, Effective CBD

Sträva is committed to delivering safe, effective CBD products and partners with leading suppliers to ensure strict quality standards are met. Sträva's broad-spectrum hemp extracts are independently tested to be clean and free of contaminants.

- ✓ Broad-Spectrum Natural Hemp
- ✓ Organic & USA Grown
- ✓ Tested Free of Pesticides
- ✓ Tested Free of Heavy Metals
- ✓ Tested Free of Residual Solvents
- ✓ Tested Free of Mycotoxins

## QUALITY COFFEE

### 100% Arabica Beans

Quality coffee begins at farm level with sustainable and conscious growing practices. Sträva sources beans from select farms that deliver superior specialty-grade coffees which exceed our requirements for clean & healthy coffee.

- ✓ Top 5% of Global Beans
- ✓ Organically Farmed
- ✓ Non-GMO
- ✓ Shade Grown
- ✓ Tested Free of Pesticides
- ✓ Tested Free of Heavy Metals
- ✓ Tested Free of Mycotoxins

## VERIFIED PRODUCTS

### The Perfect Cup

All Sträva's Peace & Wellness products undergo third-party testing to ensure they contain just the right amount of CBD and other desired elements. Have confidence that you're getting exactly what you expect in each batch of Sträva Craft Coffee.

- ✓ Certificate of Analysis (Attached)
- ✓ Tested free of THC
- ✓ Small Batch Roasted
- ✓ Cupped for Quality
- ✓ Verified Clean Coffee
- ✓ Verified Low Acid
- ✓ Fresh, Flavorful & Smooth

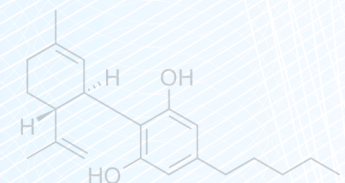
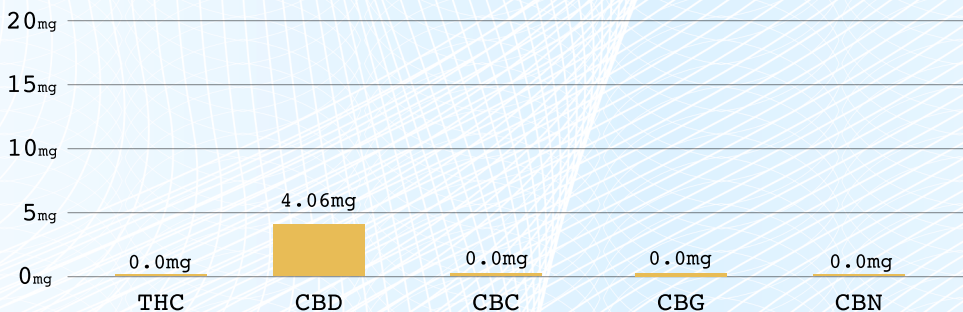
## INFUSED PRODUCT VERIFICATION SUMMARY

Master Batch: MB-ISWB-012

Kaycha Labs Sample: DE11201002-003

Specification (mg/serving)	Cannabinoid	Measurement (mg/grams)	Conversion (g/serving)	Cannabinoid Profile (mg/serving)	QA
0.00mg	THC	0.00mg/g	14.0g/s	0.0mg THC	<b>PASS</b>
<b>4.00mg</b>	<b>CBD</b>	<b>0.29mg/g</b>	<b>14.0g/s</b>	<b>4.06mg CBD</b>	<b>PASS</b>
0.00mg	CBC	0.00mg/g	14.0g/s	0.0mg CBC	<b>PASS</b>
0.00mg	CBG	0.00mg/g	14.0g/s	0.0mg CBG	<b>PASS</b>
0.00mg	CBN	0.00mg/g	14.0g/s	0.0mg CBN	<b>PASS</b>

**Total Cannabinoid Content:** 4.06mg Per Serving



Results are shown in milligrams per serving of coffee based on standard brew recommendations and portion sizes. Actual serving values may vary based on preparation method, portioning and equipment.

Reviewed & Verified By:

*[Signature]* 12/25/21  
Signature Date



# Certificate of Analysis

Sample: **DE11201002-003**  
Harvest/Lot ID: **Sample C - ISMRWB - C**  
Batch#: **N/A**  
Seed to Sale# **1A4000B00010D25000000936**  
Batch Date: **N/A**  
Sample Size Received: **30 gram**  
Total Weight/Volume: **N/A**  
Retail Product Size: **14 gram**  
Ordered : **11/30/21**  
sampled : **11/30/21**  
Completed: **12/03/21**  
Sampling Method: **SOP-024**

Dec 06, 2021 | Strava Craft Coffee, Inc.



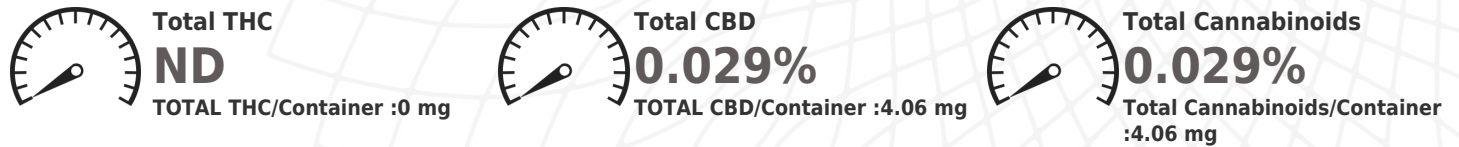
**PASSED**

Page 1 of 1

License # 405R-00011  
2452 S. Trenton Way  
Denver, CO, 80231, US

PRODUCT IMAGE	SAFETY RESULTS								MISC.	
	 Pesticides NOT TESTED	 Heavy Metals NOT TESTED	 Microbials NOT TESTED	 Mycotoxins NOT TESTED	 Residuals Solvents NOT TESTED	 Filtration NOT TESTED	 Water Activity NOT TESTED	 Moisture NOT TESTED	 Homogeneity NOT TESTED	 Terpenes NOT TESTED

## CANNABINOID RESULTS



CBV	CBDA	CBG	CBD	CBDA	THCV	CBGA	CBN	EXO-THC	CBQ	D9-THC	D8-THC	CBL	THCVA	CBC	D10-THC	CBNA	THCA	CBGA	CBLA	THC-O-ACETATE	
ND	ND	<0.006	0.029	ND	ND	ND	ND	ND	ND	ND	ND	ND	ND	ND	ND	ND	ND	ND	ND	ND	
LOD	0.00265237	0.00070559	0.00219044	0.00333396	0.00125116	0.00205806	0.00192419	0.00183167	0.00401072	0.0148	0.000847945	0.00268886	0.000921807	0.000717378	0.00286194	0.000534	0.000910194	0.000458461	0.00210199	0.00116619	0.003403

## Cannabinoid Profile Test

Analyzed by 8	Weight 1.0262g	Extraction date : 12/04/21 12:12:43	Extracted By : 1642
------------------	-------------------	--	------------------------

Analysis Method -SOP-020 (R15)      Reviewed On - 12/06/21 10:42:48      Batch Date : 12/04/21 09:12:41  
Analytical Batch -DE002738POT      Instrument Used : Agilent 1100 "Liger"      Running On : 12/04/21 12:33:08

Reagent	Dilution	Consums. ID	Consums. ID
101121.10	20	07051275	5079-525C6-525E
102721.R07		1119999	
120121.R10		BG045	
102221.R05		R1KB34782	
120321.R07		298076054	
		12211-108CC-108	

Full spectrum cannabinoid analysis utilizing High Performance Liquid Chromatography with DAD detection (HPLC-UV). Method SOP-022 (R13) for reporting. Lower limit of linearity for all cannabinoids is 1 mg/L.

## Label Claim - PASSED

Analyte	LOD	Units	Result
TOTAL CBG	0.001	mg	ND
TOTAL CBN	0.001	mg	ND

This report shall not be reproduced, unless in its entirety, without written approval from Kaycha Labs. This report is an Kaycha Labs certification. The results relate only to the material or product analyzed. Test results are confidential unless explicitly waived otherwise. Void after 1 year from test end date. Cannabinoid content of batch material may vary depending on sampling error. IC=In-control QC parameter, NC=Non-controlled QC parameter, ND=Not Detected, NA=Not Analyzed, ppm=Parts Per Million, ppb=Parts Per Billion. Limit of Detection (LoD) and Limit Of Quantitation (LoQ) are terms used to describe the smallest concentration that can be reliably measured by an analytical procedure. RPD=Reproducibility of two measurements. Action Levels are State determined thresholds variable based on uncertainty of measurement (UM) for the analyte. The UM error is available from the lab upon request. The "Decision Rule" for the pass/fail does not include the UM. The limits are based on F.S. Rule 64-4.310.

**Stephen Goldman**  
Lab Director  
State License #  
405R-00011 405-00008  
ISO Accreditation # 4331.01



Signature

12/03/21  
Signed On