



# **Teego Personal Edition**

## **Assembly and Users Guide**



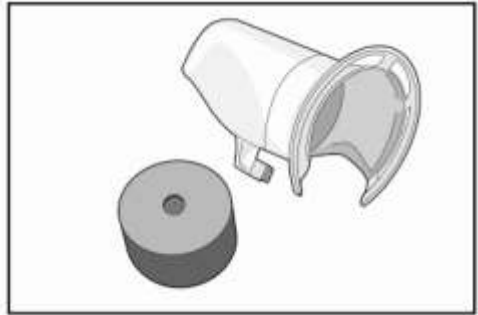
***IMPORTANT!***

**Read this before using your Teego**

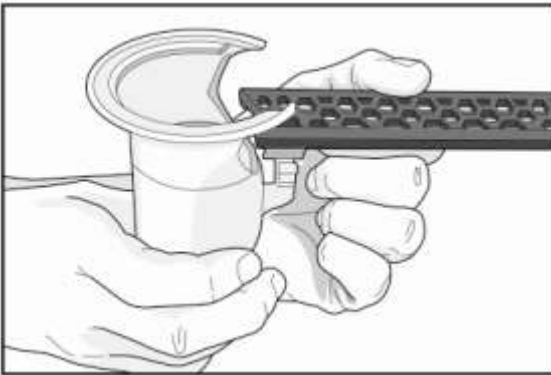
## Final Assembly

Your Teego is assembled except for two small parts that need to be attached. These parts are the "downspout" and the "counterweight" and no tools are required to attach them.

The first step is to attach the downspout to the Teego ball track or "arm" as people like to call it. As shown in figure 2, align the front of the arm with the downspout and



**Figure 1. Downspout and counterweight.**



**Figure 2. Attaching the downspout.**

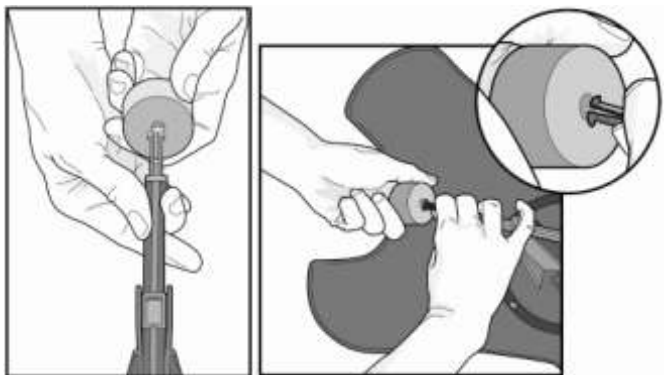
align the front of the arm with the downspout and snap the downspout onto the arm, starting from the bottom of the arm. Be sure that both snap hooks on the downspout slide into the hole on the front of the arm and that they lock into position.

Next, attach the counterweight to the ball track at the end opposite the

downspout. Do this by turning your Teego upside down to gain access

to the back end of the "arm". As shown in figure 3, slide the counterweight over the snap hooks until they snap and lock the counterweight

into position.



**Figure 3. Attaching the counter weight.**

## Filling Teego

Your Teego holds 150 golf balls, 75 on the spiral rail and another 75 in the center storage container. To load it with balls,

1. Raise the filling sleeve by pressing the locking tabs inward and sliding the sleeve up until it locks into position.
2. Pour the balls into the top. A bit of jostling/shaking



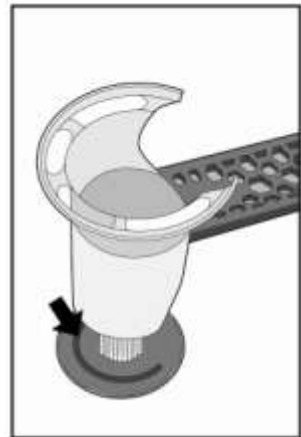
may be required to get them to feed down the spiral track. For large loads remove the center container lid and fill the center container for more capacity.

3. Press the locking tabs in once again and lower the sleeve to its original position.

Once the balls on the spiral rail are used, more can be placed onto the rail by scooping them out of the center container onto the spiral track.

## Aligning the Tee and Ball Track

Aligning the Teego arm with the tee is easy. Teego Range Tee (bristle tee) and turf tee holder (see figure 6) has a semi-circle alignment groove used for positioning the tee. While lowering the arm down towards the ground, place the tee within the downspout so that the groove lines up with downspout and the arrow faces the Teego, as depicted in figure 5. Then lower the arm and tee down until the spikes of the tee touch the ground. Release the arm and then press the tee stakes completely into the ground. Test the alignment by dispensing a golf ball from the Teego (see the next section on how to dispense a ball). If the ball does not tee up, move the Teego



**Figure 5. Downspout-tee alignment.**

as needed to achieve proper alignment. It is possible to align the downspout such that the ball will be placed on the tee, but the "arm" will not retract or will retract very slowly. This is do to improper alignment, the downspout should make little if any contact with the ball when the ball track retracts.



**Figure 6. Turf tee holder.**

## Dispensing Balls from Teego

Triggering Teego to dispense a golf ball is done by using your golf club to press and release the ball release button located on the side (see figure 7). **The optimal way to dispense balls from Teego is with a smooth press and release at the tempo of a clock "tick-tock".** If you tap the ball release button too fast it may not dispense a ball at all, since the tap may be too quick



**Figure 7. Teego ball release button.**

to allow the ball to drop down onto the arm.

Generally, it only takes a few tries to get the right press and release tempo.

## Transporting Teego

To transport your Teego, secure the ball track by gently lifting the back of the downspout so it latches over the top of the ball container (see figure 8); make sure the filling sleeve is all the way down. Then just grab the carrying strap, put it over your shoulder and go.



**Figure 8. Securing the arm.**

## Maintenance

The Teego is fairly low maintenance, but to keep it operating at its best it's recommended that dirt and debris be removed by blowing the unit off with high pressure air or spraying it with a water hose.

[Remember to clean the arm axle area periodically!](#)

## Troubleshooting

**Problem: The Teego arm does not go completely down or is slow going down.**

**Possible Cause** – Only one ball in the chamber; the Teego uses the weight of the ball being dispensed and the ball following it to initiate the arm dropping down, when there is only one ball in the chamber the additional weight of the second ball is missing, thus the arm drops a bit slower.

**Possible Cause** - Incorrect Ball Release Technique: Make sure you are pressing and releasing the ball release button using the press and release, "tick-tock" tempo; see the usage instructions for details.

**Possible Cause** - High Winds: If the wind is unusually high it may cause the Teego arm to lower slowly. To resolve this, try changing the position of the Teego so the wind has less effect on the arm. If this can not be done, you may need to push the arm down with your golf club when this happens.

**Possible Cause** - Dirty Arm Axle: Make sure the axle of the arm is free from dirt and sand. If needed, remove and clean it with water. When you reattach the arm, apply petroleum jelly to the axle for best performance.

**Problem: The Teego arm does not return to the upright position.**

**Possible Cause** - Incorrect Alignment: Make sure the downspout is properly aligned with the tee. If it's off center, the contact between the ball and the downspout may cause it to hang in the down position.

**Possible Cause** - High Winds: If the wind is unusually high it may cause the Teego arm to stay lowered. To resolve this, try changing the position of the Teego so the wind has less effect on the arm. If this can not be done, you may need to push the arm up with your golf club when this happens.

**Possible Cause** - Dirty Arm Axle: Make sure the axle of the arm is free from dirt and sand. If needed, remove and clean it with water. When you reattach the arm, apply petroleum jelly to the axle for best performance.

**Possible Cause** - Dirty Ball or Downspout: Make sure the inside of the downspout is smooth and clean. Also ensure that the balls are not dirty, as this will increase the friction between the ball and downspout causing it to hang.

**Problem: Balls are jamming in the container.**

**Possible Cause** - Dirty Balls: Sandy and dirty balls will may cause jamming in the Teego spiral container or release chamber. If this happens, spray the Teego container and balls with water until the dirt is removed and the balls move freely.

**Possible Cause** - Oversized Balls: Teego is design to work with standard size golf balls, oversize golf balls may cause jamming.

**Possible Cause** – There's an object in the ball container obstructing the path of the golf balls. Turn the Teego upside down and remove all the balls along with the obstruction.

## Contacting Teego Golf

**Web:** <http://www.teego.com>

**Support Email:** [support@teego.com](mailto:support@teego.com)

**Sales Email:** [sales@teego.com](mailto:sales@teego.com)

**Telephone Sales 9am – 5pm EST:** 1-800-698-3346 Ext. 1

**Telephone support 9am – 5pm EST:** 1-800-698-3346 Ext. 2

### Mailing address:

#### Teego Golf

137 Plantation Circle S.  
Ponte Vedra Beach, FL 32082  
USA

## Ordering Tees and Parts

You can order the following items and other accessories for your Teego by calling our sales line or visiting us on the web at

<http://www.teego.com>.

**TGRTIRN** – 3 Pack of iron height (12mm) RangeTees

**TGRTDVR** – 3 Pack of driver height (30mm) RangeTees

**TGRTODVR** – 3 Pack of oversized driver height (40mm) RangeTees

**TGRTVRTY** – Variety 3 Pack of RangeTees (12, 30, & 40mm)

**THLD** – Turf tee holder for using rubber mat tees on grass

**TGARM** – Replacement ball track

**TGDSPT** – Replacement downspout