

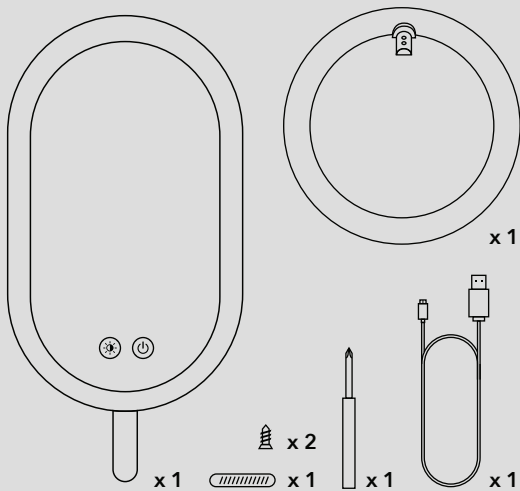
fancii

Good-bye
Boring
**Beauty
Routine!**

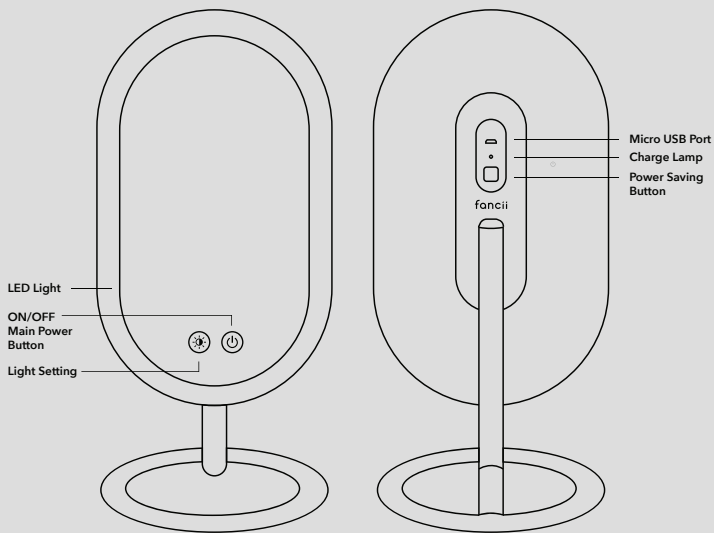
VERA

Luxe Lighted Vanity Mirror

CONTENTS



MIRROR FUNCTIONS



LIGHT SETTINGS

With a CRI (color rendering index) of 95, Vera is able to emit a much more natural, accurate output of light. Why is this important? It means you'll get a color-corrected reflection of your skin in your mirror and you won't have to worry about BBL (Bad Beauty Lighting™). Our long-lasting LED lights, unlike traditional incandescent bulbs, won't burn out or diminish, and have a lifespan of up to 20,000 hours.

Vera has been designed with a built-in timer to automatically shut off the LED lights after 30 minutes. So if you find yourself in a rush, or forget to press the power button, you won't have to worry about your battery charge running down.

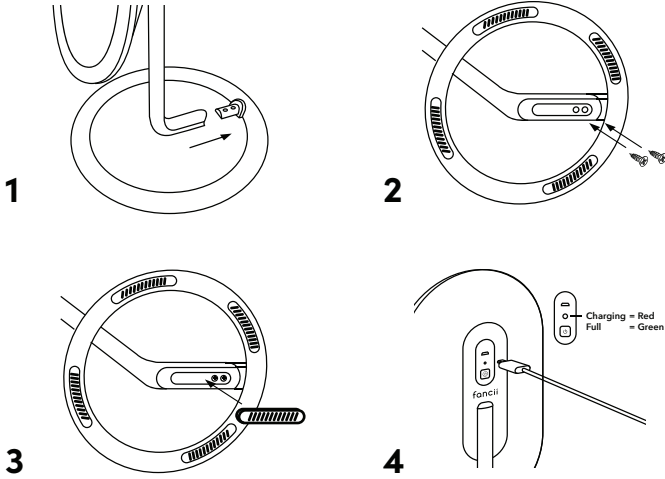
1/ Neutral White (6000k) - True neutral white (no red or blue hues), is recommended for getting photo-ready.

2/ Soft White (3500k) - This warmer hue (free of blue light) is perfect for creating a makeup look for an evening occasion like a date night or for night-time skincare routines to help ease you into sleep.

3/ Natural Daylight (5000k) - All-round ideal light for daytime makeup as it simulates natural daylight.

LET'S BEGIN

ASSEMBLY



POWERING UP

- 1 / We recommend charging Vera when you first receive it to ensure the battery is fully powered. Follow the instructions in the **Stay Powered** section to read how.
- 2 / Ensure the battery is fully charged or use the provided USB cord and plug Vera into a reliable power source (such as the USB port of a computer, laptop, DC-5V wall adapter, or USB power bank).
- 3 / Push the **power saving button** on the back of the mirror.
- 4 / Turn the LED lights on by tapping the (☾) button on the front of the mirror.
- 5 / Vera comes with three different LED light options. To cycle through the different light settings, tap the (☼) button on the front of the mirror until you find your desired light temperature. Vera will remember the last setting you used when you power it back on.
- 6 / Holding down the (☾) button will dim or brighten the light until you reach your desired brightness. The light is dimmable in every setting.
- 7 / Push the **power saving button** on the back of the mirror when not in use to conserve power. Note: The light will automatically turn off after 30 minutes to conserve power.

STAY POWERED

- 1 / Use the USB cord to charge the battery.
- 2 / Attach cord to Micro USB Port located on the back of the Vera and connect the other end to a power source. The battery takes approximately 3.5 hours to fully charge.
- 3 / When charging, the light beside the charging port will turn red. When fully charged, it will turn green.

CLEANING VERA

1 / Use a glass cleaner or water on a microfibre cloth or squeegee to wipe the glass in circular motions to avoid smears.

2 / Wipe down the rest of the mirror with a slightly damp cloth.

WARNINGS

- ⚠ Keep away from children and pets.
- ⚠ The mirror is not waterproof. To protect against electrical hazards, do not use in the bath or shower.
- ⚠ Do not place mirror in direct sunlight. Reflection of direct sunlight by the mirror could cause a fire.
- ⚠ Use this mirror only for its intended purpose.
- ⚠ This product contains glass and may shatter if dropped. Handle with care.
- ⚠ This product contains a lithium battery and should be recycled or disposed of according to state and local guidelines.

BATTERY DISPOSAL

Note: Opening and disassembling the device will void its warranty. The process is not reversible. This action must only be undertaken when the device is ready to be disposed of. All batteries should be recycled or disposed of as per state or local guidelines, and should not be thrown away in household waste. To remove the battery, you need to disassemble the unit and carefully extract the lithium battery. Wear gloves during this process for your safety. Do not dispose of it in a fire as the battery will likely explode and cause injury.

Here To Help

We pride ourselves on providing premium beauty tools which is why all of our products are backed by a 24-month warranty. If you have any questions or need further assistance, you can send us an email, connect with us on Live Chat or give us a call! Our friendly support team is here to help.



1 • 800 • 285 • 0183



support@fancii.com



LIVE ONLINE CHAT AT:

fancii.com

fancii