

fancii

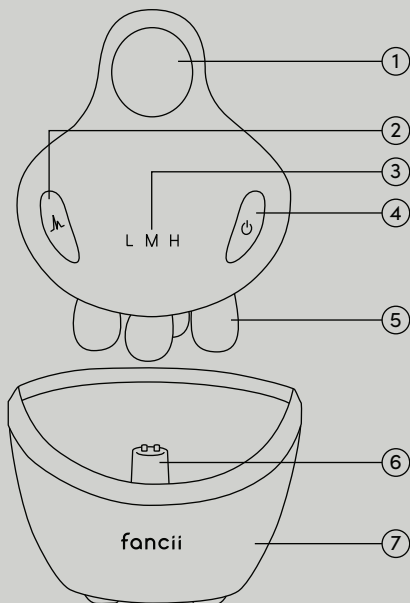
Good-bye
Boring
**Beauty
Routine!**

AMELIA

EMS Facial Massager
with LED Therapy

Includes:

- 1 / Finger Ring Holder
- 2 / EMS/RF Switch
- 3 / Function Level Indicator Light
- 4 / On/Off Switch
- 5 / Massage Heads
- 6 / Charging Point
- 7 / Charging Base



WARNINGS

- ⚠ Read **Warnings** carefully before using the device.
- ⚠ Children must not play with this device.
- ⚠ Cleaning and user maintenance may not be carried out by children without supervision.
- ⚠ Use this product only for its intended use as described in this manual.
- ⚠ Discontinue use immediately and contact Customer Service if you notice any malfunction or unusual reaction to this product.
- ⚠ Do not use this product in a defective state as this could result in injury.

DISCLAIMER

- ⚠ Fancii makes no claims, representations, or warranties regarding Amelia's ability to diagnose, prevent or cure any physical or mental condition. Consult a qualified health professional regarding any condition that requires medical attention.
- ⚠ Conduct a light sensitivity test before usage of the device. See **Let's Begin** for more information.

SAFETY PRECAUTIONS

1 / The following persons should not use this device unless approved by a medical professional:

- Persons who are currently undergoing treatment, have acute medical conditions, tubercular conditions, or have recently undergone surgery.
- Persons with heat-sensitive skin or skin diseases such as rashes, atopic dermatitis, etc.
- Persons with conditions such as light sensitivity, photophobia, skin hemorrhages, vitiligo, or other severe skin diseases.
- Women who are pregnant, breastfeeding, or are currently having their menstrual period. Hormonal fluctuations can make skin more sensitive and reactive to light therapy.
- Persons with skin injuries such as open wounds, irritation, swelling, severe sunburns, etc.
- Persons experiencing overfatigue.
- Persons with capillary dilatation caused by long term use of steroid hormonal drugs or a disorder of liver function.
- Persons who had an operation on their eye(s)/face; who have a disease of the eye(s)/face; those who are currently undergoing treatment for a disease of the eye(s)/face.
- Persons taking medication that induces drowsiness.

2 / Avoid direct eye contact with the device due to the LED light therapy. Please protect your eyes by keeping them closed throughout the process or using protective eye gear such as goggles (not included).

3 / Use the product with caution. Do not hold the device while powered on one point of the face for an extended period of time to avoid skin damage or bruising. Ensure that the device is in constant motion across the face throughout use.

4 / Keep the product away from children.

5 / Always unplug the device once completely charged. Do not leave the device unsupervised.

6 / Keep the device away from wet surfaces. Do not use near a bathtub, sink, or any household furniture containing water.

7 / If the item has fallen into water or other liquids, do not reach for the machine. Unplug immediately.

8 / Keep the product and the power cord away from hot surfaces.

9 / Clean the device regularly to avoid the accumulation of grease and other residues.

FEATURES

LED MASSAGE THERAPY - Boost blood circulation with a facial massage to increase collagen production and improve skin texture, firmness, and elasticity while targeting and treating a variety of skin conditions using five different light emitting diode (LED) wavelength options.

4-IN-1 FACIAL TREATMENT - Create a youthful and radiant complexion with improved muscle tone in the face and neck with a combination of RF, EMS, LED light therapy, and facial massage. RF stimulates collagen production and improves skin texture, EMS tones facial and neck muscles, LED light therapy reduces wrinkles, and facial massage boosts blood circulation and reduces puffiness.

SAFE, PAINLESS, AND EFFECTIVE - Heal and treat your skin in the comfort of your own home and enjoy zero recovery downtime.

ECO-FRIENDLY POWER - Equipped with a charging base, Amelia is cordless, portable, and can last up to 3 hours from a single charge. No need for replacement heads or batteries.

LED LIGHT THERAPY

- Red Light - Improves your skin's appearance by stimulating collagen production and rejuvenating skin cells to treat wrinkles, redness, acne, scars, and other signs of aging to produce smooth, supple skin.
- Yellow Light - Helps combat redness and irritation while boosting the skin's blood circulation. Yellow light may also be used to treat sunburn and radiation damage from ultraviolet (UV) rays.
- Blue Light - Fight acne-causing bacteria and reduce oil production that leads to clogged pores with blue light therapy.
- Mixed Light - Enjoy a comprehensive rejuvenation treatment by using a mixture of three therapy lights for healthier, smoother skin.
- Flashing Mixed Light - For use after skincare application to enhance the absorption of products and boost their benefits.

CHOOSING THE RIGHT MODE:

LED MASSAGE THERAPY (LIGHT THERAPY + MASSAGE)

Combine light therapy with a facial massage for boosted skin benefits. LED light therapy targets particular skin concerns, and facial massage enhances blood circulation and product absorption. LED light therapy can prepare the skin for the massage by relaxing facial muscles, and the massage can promote lymphatic drainage and reduce puffiness. This combination offers a rejuvenating experience while improving the skin's health and appearance.

4-IN-1 FACIAL TREATMENT (EMS + RF + LIGHT THERAPY + MASSAGE)

A comprehensive solution for optimal skin health and appearance. Radio Frequency (RF) tightens skin and stimulates collagen. Electric Muscle Stimulation (EMS) reduces fine lines and enhances muscle tone. Facial massage improves blood circulation, reduces puffiness, and promotes lymphatic drainage for a radiant complexion. LED light therapy reduces inflammation, improves skin texture, and boosts cellular energy for healthier skin.

LET'S BEGIN

LIGHT SENSITIVITY TEST

While light therapy is generally safe for most users because it does not contain ultraviolet (UV) light, we recommend a light sensitivity test or check with your physician before treatment.

1 / Power Amelia up by pressing the (Ⓞ) button to activate the light therapy feature.

2 / Test the device on a small patch or area of your skin (e.g. on your forearm) for no more than three minutes.

3 / Turn the device off and check the treated area to see if your skin has turned red. If the redness does not go away after 2 hours, your skin may be sensitive to the light.

4 / If your skin is sensitive to the light, discontinue the use of Amelia and contact our Customer Service (note: Fancii stands by a 30-day return/ refund policy for orders placed via fancii.com).

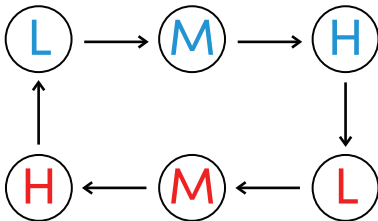
USING AMELIA

1 / We recommend charging Amelia when you first receive it to ensure the battery is fully powered. Follow the instructions in the **Stay Powered** section to read how.

2 / Ensure your skin is clean, dry, and free of makeup.

3 / Tie or pin your hair away from your face to avoid it getting tangled in the device.

4 / Choose and apply only skincare serum or essence evenly on your face.



When “L, M, H” turns blue,
LED Massage Therapy is active.

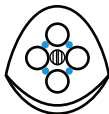
When “L, M, H” turns red,
the 4-in-1 mode is active.



Press once
for Red light



Press twice
for Yellow light



Press three times
for Blue light



Press four times
for Mixed light



Press five times
for Flashing Mixed light

LED MASSAGE THERAPY (Light therapy + Massage)

L M H

1 / Press the (⏻) button to turn the device on. The device will automatically begin with red light therapy and low (L) massage speed. Choose starting from red, yellow, blue, mixed light, and mixed flashing light. Press the button again until you have reached your desired light setting.

2 / Press the (⏻) button once for low (L) massage speed. Press the button twice to change to medium (M) massage speed and three times for high (H) massage speed.

3 / Position your middle finger into the ring hole to hold the massager onto the face. Hold the device head flat against your face and gently massage in a circular motion starting from the forehead down to the neck.

4 / Turn the device off by pressing the (⏻) button for 2-3 seconds. Alternatively, the device will automatically turn off after 10 minutes of continuous usage.

4-IN-1 MODE (Massage + Light Therapy + EMS + RF Mode)

L M H

1 / Press the (⏻) button to turn the device on. The device will automatically begin with red light therapy and low (L) massage speed. Choose starting from red, yellow, blue, mixed light, and mixed flashing light. Press the button again until you've reached your desired light setting.

2 / Press the (⏻) button once for low (L) massage speed. Press the button twice to change to medium (M) massage speed and three times for high (H) massage speed.

3 / Press the (M) button a fourth time to access the 4-In-1 mode. The LMH indicator light will turn red to signify that MASSAGE + LIGHT THERAPY + EMS + RF MODE is active.

4 / Position your middle finger into the ring hole to hold the massager onto the face. Hold the device head flat against your face and gently massage in a circular motion starting from the forehead down to the neck.

5 / Turn the device off by pressing the (⏻) button for 2-3 seconds. Alternatively, the device will automatically turn off after 10 minutes of continuous usage.

STAY POWERED

1 / Attach the USB-C cord to the back of the charging base and connect the other end to a power source.

2 / Place Amelia into the charging base.

3 / The M indicator will turn red while charging. When the indicator turns green, Amelia is fully charged.

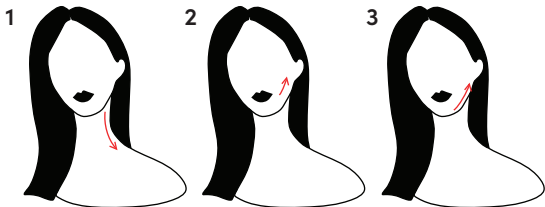
4 / The battery takes approximately 5 hours to fully charge and will run continuously for up to 3 hours.

Important: Store the charging base in a dry, ventilated place away from water.

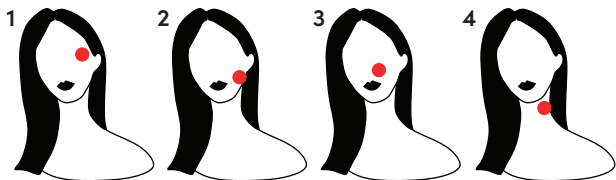
MASSAGE AREAS

Facial Care

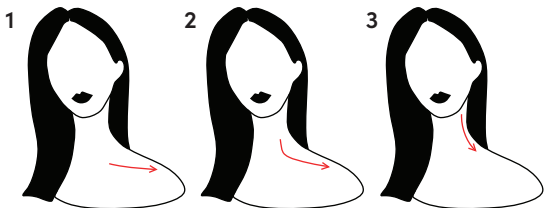
MOVE



STAY



NECK CARE



CLEANING, STORAGE AND MAINTENANCE

After use, unplug the device and store it in a dry, safe place. Use a clean, damp cloth to wipe down the massager. Ensure that the device is never exposed to direct sunlight or submerged underwater.

BATTERY DISPOSAL

Note: Opening and disassembling the device will void its warranty. The process is not reversible. This action must only be undertaken when the device is ready to be disposed of. All batteries should be recycled or disposed of as per state or local guidelines, and should not be thrown away in household waste. To remove the battery, you need to disassemble the unit and carefully extract the lithium battery. Wear gloves during this process for your safety. Do not dispose of it in a fire as the battery will likely explode and cause injury.

Here To Help

We pride ourselves on providing premium beauty tools which is why all of our products are backed by a 24-month warranty. If you have any questions or need further assistance, you can send us an email, connect with us on Live Chat or give us a call! Our friendly support team is here to help.



1 · 800 · 285 · 0183



support@fancii.com



LIVE ONLINE CHAT AT:

fancii.com

fancii