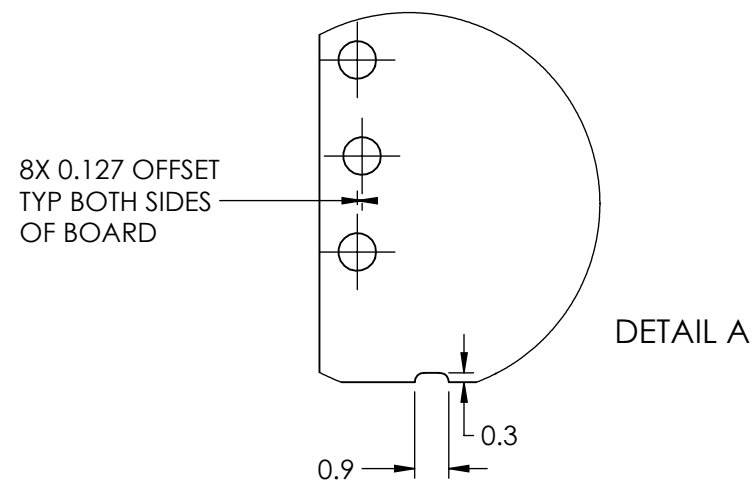
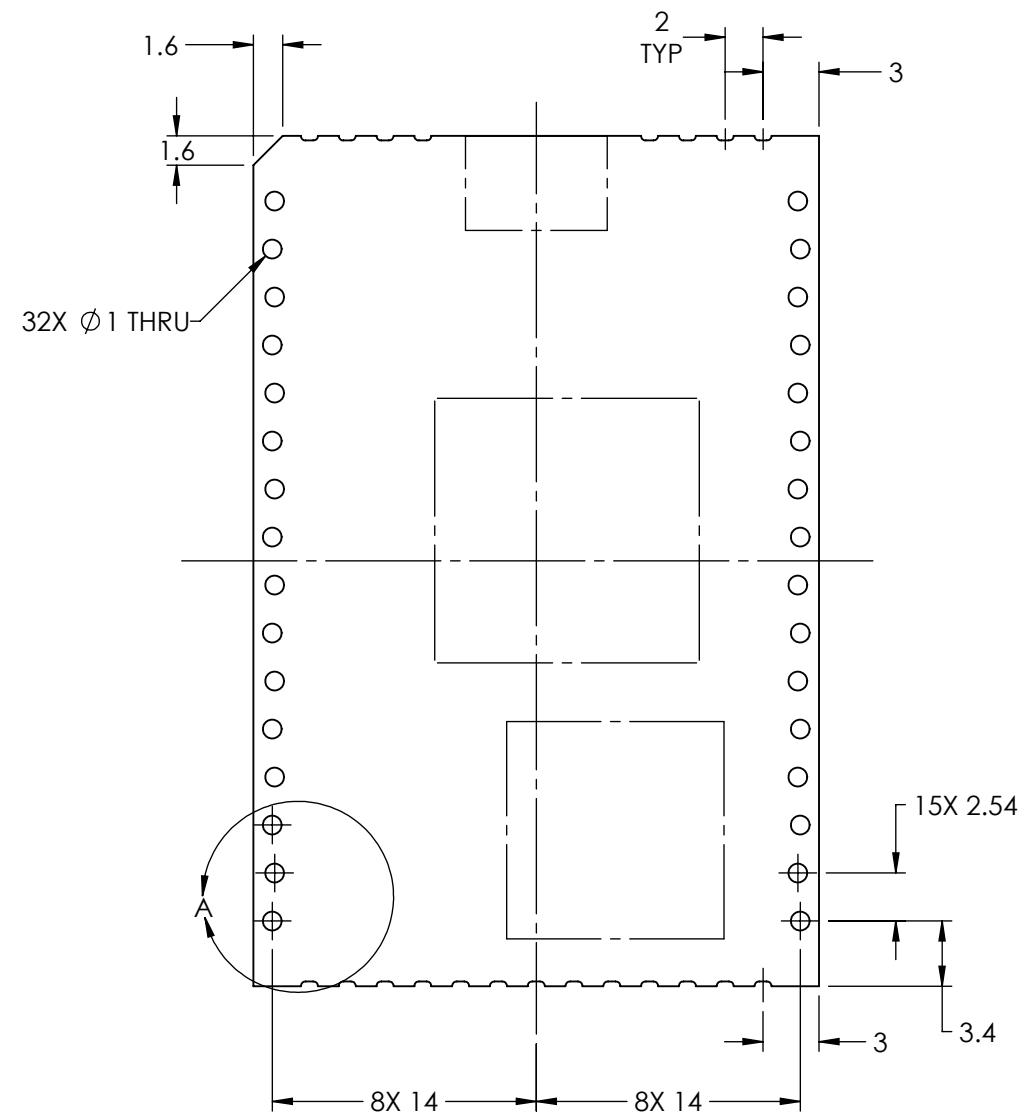
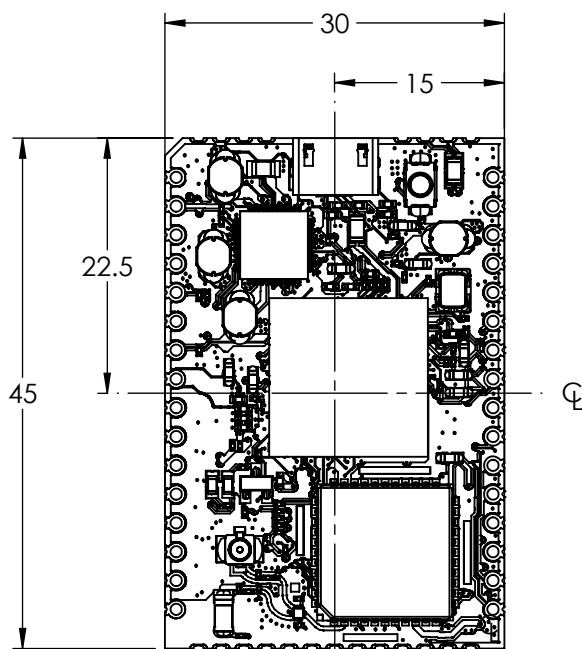
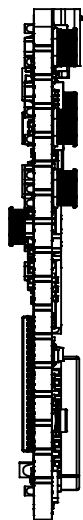
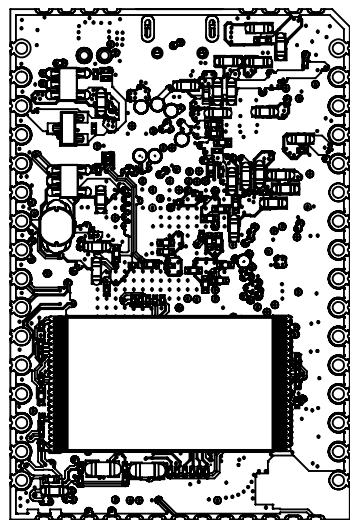
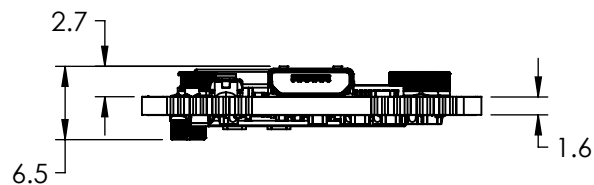
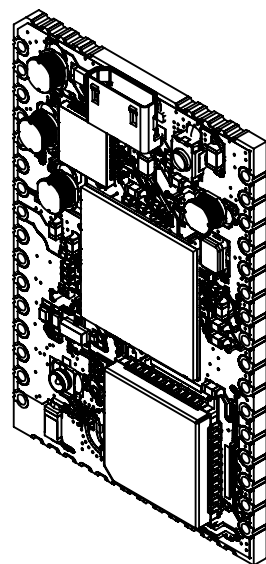


NOTES:

- MATERIAL TO BE CLASS 2 FR4, 1 OZ Cu., OVERALL THICKNESS TO BE 1.6MM
- ALL UNSPECIFIED TOLERANCES ARE:  
 HOLE TO HOLE: +/- .003  
 HOLE TO EDGE: +/- .003  
 EDGE TO EDGE: +/- .005  
 HOLE SIZE: +/- .002
- OVERALL WORKMANSHIP STANDARDS AND INSPECTION CRITERIA TO BE IN ACCORDANCE WITH IPC-A-600, CLASS '2', CURRENT REVISION.
- ALL SOLDERABLE SURFACES SHALL BE PLATED WITH 3-7 MICROINCHES OF GOLD OVER 150 MICROINCHES OF NICKEL.
- SOLDERMASK TO BE LIQUID PHOTOIMAGABLE HUNTSMAN PROBIMER 77 OR NTC ENGINEERING APPROVED EQUIVALENT.



TOLERANCES UNLESS NOTED OTHERWISE	
1 PLACE DIMENSIONS ± .3 mm	
2 PLACE DIMENSIONS ± .12 mm	
3 PLACE DIMENSIONS ± .012 mm	
ANGULAR DIMENSIONS ± 1°	

METRIC
UNLESS OTHERWISE SPECIFIED
SIZE B
SHEET 1 OF 1

SOLIDWORKS DRAWING  
DO NOT SCALE DRAWING  
NO MANUAL CHANGE

THIRD ANGLE PROJECTION

TITLE: <b>CHIP PRO</b>	
PART NO: NTC-100456	
REV NO: .09	
DRAWN: JB	DATE: 10/8/16
CHECKED: JT	DATE: 10/8/16

Plot Date: MONDAY, OCTOBER 10, 2016

Drawing File: NTC.PCB