



BROWNING[®]

TRAIL CAMERAS



MODEL BTC-5DCL



PLEASE READ THIS MANUAL BEFORE USE

INSTRUCTION MANUAL



BROWNING[®]

TRAIL CAMERAS

Thank you for purchasing a Browning Trail Camera. Our trail cameras are constructed of the finest workmanship and materials available. As hunters ourselves, we have designed our products to help you get the most of your time in the field. We hope you enjoy scouting game for years to come with your new Browning Trail Camera.

Our customer service team is here to help you with any questions you may have operating or setting up your new trail camera. Our representatives are available Monday through Friday from 9am to 5pm CST.

Toll Free Customer Service:

1.888.618.4496

Customer Service email:

info@browningtrailcams.com

QUICK START GUIDE

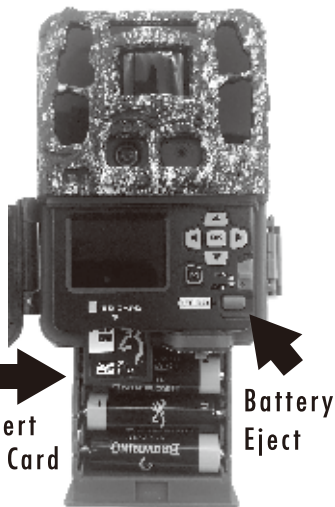
STEP 1

Press the battery tray eject button to release the battery tray. The tray will eject about 1/2".

Insert 6 AA Alkaline Batteries and an SD card into the camera.

Insert
SD Card

Battery
Eject



STEP 2

Using the control pad, set the time and date.



STEP 3

Press the MODE button once. Camera will countdown a 10 second delay and then be ready to capture images.



TABLE OF CONTENTS

Package Contents	1
SD cards selection	1
Camera Diagram	2
Battery Installation	3
Main Screen	4
Time and Date	5
Capture Mode	6
Capture Delay / Picture Size	7
Multishot Modes	8
Video Quality / Video Length	9
Smart IR / Adjustable IR Flash	10
Timelapse Settings	11
Temp Units / Info Strip / SD Management	12
Motion Test / Camera Name	13
Default Settings / Delete Images	14
Software Upgrade	14
Image Retrieval	15
Timelapse Viewer Software	16
Field Installation	17
Accessories	18
Warranty	19
FCC	20
Camera Specifications / SD card size chart	21



Getting Started

Package contents:

- 1- Trail Camera
- 1- 6' Tree Strap
- 1- Instruction Manual

SD Card Selection

Install a good quality memory card. The best brands of SD cards are Browning branded cards, Sandisk or Kingston branded cards. Your camera can operate on standard class 10 or higher SD cards ranging from 4-32 GB . You can also use higher capacity SDXC cards ranging from 64-512GB.

Please see page 21 for a graph showing how many photos, videos and timelapse segments can be stored on SD cards from 4-32GB. Based on your intended camera usage, this table will help you determine what size SD card you need to use in your camera.

Camera Diagram



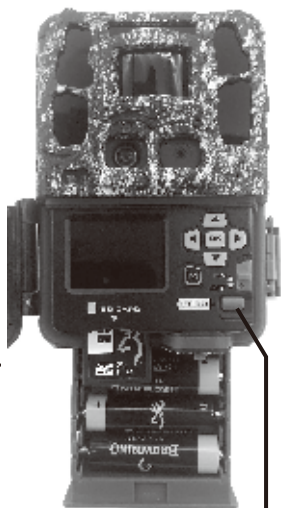


Battery Installation

Release the battery tray by pressing the Battery Eject button. The battery tray will eject about 1/2". To completely remove the battery tray, simply pull the tray with a bit of force.

Install 6 AA Alkaline or Lithium batteries in the battery tray. Make sure you install the batteries with the correct polarity, following the markings on the battery tray. For optimal performance we recommend using Browning branded batteries, Energizer or Duracell.

Slide the battery tray into the closed position.



Battery
Eject
Button

Main Screen

Turn the cameras power on by sliding the power switch to the ON position.



The main screen displays the camera operation mode, pictures or videos taken, pictures or videos possible on the SD card, camera delay countdown and battery life percentage. The background will show a live image from the camera. This can be used to help position the camera in the field.

The battery life meter shows the percentage of charge left in your batteries.

When the delay counter counts down to 00:00. The camera is now ready to take a picture or video

To playback images or videos on the SD card on the color screen, simply press the RIGHT arrow key while the Main Screen is displayed.

Your first image or video will be displayed on screen. The RIGHT and LEFT arrow keys will advance forward or reverse through the SD card contents. Press the MODE button to exit the preview mode.





To Set the time and date:

SETUP	
Date	1/05/2022
Time	12 : 21 PM
Mode	TRAIL
Capture Delay	10s

From the HOME screen, press the MODE button once. The SETUP screen will display showing your available camera settings options. The DATE option will be highlighted.

Press the OK button to highlight the month. Using the UP or DOWN arrows, select the current month.

Press the RIGHT arrow key to set the current day.

Using the UP or DOWN arrows to set the correct day.

Press the RIGHT arrow key will highlight current year setting.

Use the UP and DOWN arrows to select the correct year.

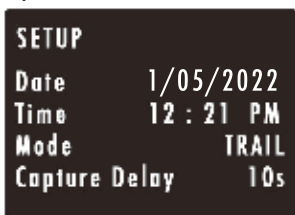
Once finished, press the OK button.

Press the DOWN arrow to highlight the TIME setting.

Using the arrow keypad, set the current time and date. Make sure to set the correct AM/PM option as well. Press OK to save.

Capture Mode

To set the camera's capture Mode, use the DOWN arrow to highlight the MODE option.



Select the operation mode for your camera. Press OK when finished.

CAPTURE MODE OPTIONS:

- STILL PICTURES** This setting will take still pictures of game in daytime and nighttime. This is the setting most people use for trails and feeding areas.
- TIMELAPSE PLUS** This setting allows you to take timelapse images during the day. In addition, your camera will also take motion activated pictures during the day and night, to make sure you do not miss any game activity.
- VIDEO** This setting will take HD video clips of game in daytime and nighttime.





Capture Delay

The capture delay sets the "timeout" in between motion activated images or videos. Highlight the CAPTURE DELAY option and use the RIGHT or LEFT buttons select the delay.

SETUP

Capture Delay	10s
Picture Size	8MP
Multishot	Off
Video Quality	High

Capture Delay options are 1, 5, 10, 20, 30, 60 seconds and 2, 5, 10, 30 or 60 minutes.

Picture Size

To select the Picture Size, highlight the PICTURE SIZE. Use the RIGHT or LEFT arrow keys to make your selection.

OPTIONS:

LOW 4MP

MEDIUM 10MP

HIGH 16MP

ULTRA 26MP

TIP- A 4MP picture size works for almost any application. You can store more 4MP images on an SD card as well.

Multishot Modes

To program the MULTI SHOT mode, use the DOWN arrow button to highlight the Multishot option. Use the RIGHT or LEFT buttons to highlight a Multishot option.

SETUP

Multishot	Off
Video Quality	High
Video Length	10s
Night Exp	Long Range

Your Browning Trail Camera can take multiple shots each time the camera is triggered. The default setting is 1 picture. Your options are as follows:

-MULTI SHOT OFF This is the default setting. Your camera will only take 1 picture when triggered.

-MULTI SHOT STANDARD The selections available are 2-8 shots in this mode. If you select 8-SHOT STANDARD, your camera will take 8 pictures, spaced 2 seconds apart.

-RAPID FIRE This selection allows rapid image capture. When triggered, your camera will take 2-8 RAPID FIRE shots, with only 0.3 seconds between pictures. Your available options are 2,3,4,5,6,7, or 8 RAPID FIRE shots.





Video Quality

VIDEO RESOLUTION

The video options for your Browning trail camera are as follows:

SETUP

Multishot	Off
Video Quality	High
Video Length	10s
Night Exp	Long Range

HIGH Full 1080p @ 30fps

ULTRA Full 1080p @ 60fps

Video Length

VIDEO LENGTH

You can select the length of your video clip as well in the VIDEO LENGTH window. Your options are: 5, 10, 20, 30 seconds, 1 minute or 2 minute lengths.

NOTES:

To conserve battery power, your night videos are limited to a maximum time of 20 seconds. For example, if your video length is set at 30 seconds, your camera will take 30 second videos during the day, and your night videos will be limited to 20 seconds.

Smart IR Video

Smart IR Video is a feature that will allow a daytime video clip to keep recording as long as the camera detects movement during filming. If the deer stands still in front of the camera and the camera does not detect movement, the camera will end the video clip. The maximum record time for a video clip using this feature is 2 minutes.

To enable Smart IR Video, press the RIGHT or LEFT arrow buttons to turn the feature ON.

Adjustable IR Flash

You can adjust the IR LED power in night photos to your specific application.

POWER SAVE This is the most economical power setting. Perfect for wooded areas, and where game is within 70 ft. of the camera.

LONG RANGE This setting is perfect for pictures in open areas, or where game may be out to distances of 130 ft.

FAST MOTION This mode has a very fast exposure time. Perfect for trails and where game may be moving fast.





Your Browning Trail Camera has the ability to function as a timelapse camera. This is useful if you want to view the entire activity in a given area such as a large field.

Timelapse Settings

SETUP

Timelapse Freq	5m
Timelapse Period	4hr
Temp	F
Info Strip	On

TIMELAPSE FREQUENCY

Your trail camera can be set to take timelapse pictures at the following frequencies: 5, 10, 20, 30, 60 seconds; 1, 2, 5, 10, 30 and 60 minutes.

TIMELAPSE DURATION

The timelapse duration can be set as well for the cameras. The timelapse duration controls how many hours per day the camera captures timelapse images.

In some locations you may want to take timelapse images all day, while in other locations you may need to only take images for 2 hours in the morning and 2 hours before sundown. Your available TIMELAPSE DURATION options are:

- ALL DAY Camera takes images from sunrise to sunset.
- 2, 3 or 4 HOUR These Durations limit the camera to taking images either 2, 3 or 4 hours after sunrise and 2,3 or 4 hours prior to sunset.

NOTE: Your trail camera learns the length of a day and constantly adjusts the 2,3 or 4 hour duration modes automatically.



Temperature Units

Your temperature units can be displayed on the picture's info bar in Fahrenheit or Celsius. To change the selection, Press the RIGHT ARROW key to make your selection.

Info Strip

Your trail camera has an information bar that is printed at the bottom of each photo taken. This info strip shows the following information: time, date, moonphase, temperature, and camera ID. This option can be turned on or off, using the RIGHT or LEFT ARROW buttons.

SD Card Management

By turning the SD Card Management feature ON, the camera will erase the oldest pictures or videos on the SD card when the SD card becomes full. This allows your camera to continue taking pictures if you cannot get to the field to swap out a full SD card.

If the SD Card Management feature is turned off, when your SD card fills up, the camera will not record any additional pictures or videos when triggered until you change out the SD card or delete the images.



Motion Test

Your trail camera is equipped with a **MOTION TEST** feature. This feature helps you aim the camera at your target area. With the motion test turned on, simply walk around in your target area. When your presence is detected, a red LED on the front of the camera will flash. Simply press the **OK** button, the red LED will flash when motion is detected.

Make sure you turn **OFF** the **MOTION TEST** function before leaving the camera in the field by pressing the **OK** button to stop the test.

Camera Name

You can add a custom name for your camera if needed. To name your camera, Press the **OK** button once. This will highlight the first character in the camera name. Use the **UP** and **DOWN** arrows to change the field. Press the **RIGHT ARROW** button to move to the next letter. Your available characters are Capital **A-Z**, **0-9** or a blank space. When finished, press the **OK** button to save your selection.



The following options can be changed by pressing the OK button to highlight the option, and changing the selection using the RIGHT or LEFT arrows. Remember to press the OK button to save your selection. Press the DOWN button to move to each new option to set below.

Default Settings

This selection returns your camera back to the factory default selections for each setting.

Delete All

By selecting DELETE ALL, all of the images on your SD card are erased. This function also reformats your SD card. It is a good idea to use the DELETE ALL function and reformat your SD card each time you install it in the camera for use.

Software Upgrade

The software upgrade function allows you to upgrade your software. If a software upgrade is available for your camera, it will be posted on our website, along with detailed instructions for upgrading at:

www.browningtrailcameras.com/customer-service



Image Retrieval

The most popular way to review the images on your SD card is to review the images on your home computer. The pictures can be viewed on both PC and Mac computers.

Simply insert the SD card into the SD card slot on your desktop or laptop computer. If your computer does not have an SD card slot, you will need an SD card reader. These are inexpensive and can be found at your local sporting goods or electronics store.

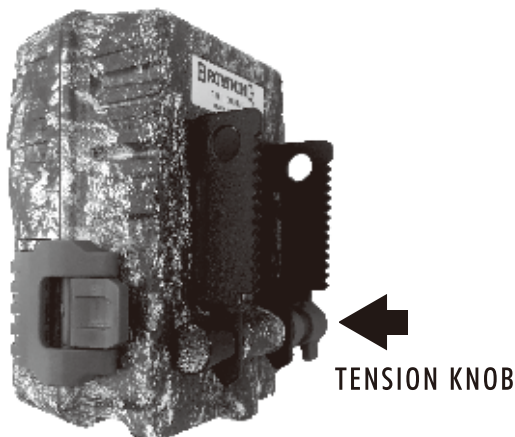
After your SD card is inserted into your computer, navigate to **START/MY COMPUTER/**. Look for the SD card icon.

Double click on the SD card icon. A folder named **DCIM** will appear. Double click on the **DCIM** folder. A new folder appears with called **100_BTCF**. Your pictures are in this folder.

Your images and videos can also be viewed directly on your camera's color screen. See page 4 for details.



Field Installation



Your camera has a built in adjustable tree mount bracket. After securing the camera to a tree, loosen the tension knob on the side of the camera. Position the camera at the correct angle, and re-tighten the tension knob.

We recommend mounting your new trail camera at a height of approximately 3 feet off the ground.

For best results, use the **MOTION TEST** feature after mounting the camera. This ensures the camera is pointed at the correct location.

The adjustable steel mounting bracket is also equipped with built in security cable loops. These are perfect for using a locking steel cable or a 5/16" Python' cable lock (not included).



Timelapse Viewer Installation

THE TIMELAPSE VIEWER SOFTWARE IS FOR VIEWING YOUR TIMELAPSE FILES. YOUR COMPUTER ALREADY HAS PROGRAMS INSTALLED TO VIEW STILL PICTURES AND VIDEOS CLIPS.

In order to playback your TIMELAPSE FILES, you need to install the Browning Buck Watch Timelapse Viewer software. This software will work on any PC running Windows XP or later version. The Buck Watch Timelapse Viewer can be downloaded from our website at:

www.browningtrailcameras.com/Buckwatch.

IMPORTANT: Once you have loaded the Buck Watch viewer on your computer, a full set of operation instructions is available by clicking on the HELP icon in the viewer window.

Accessories



We offer a full line of accessories for use with your new Browning Trail Camera.

AA Batteries



STEEL SECURITY BOXES



SD CARDS



BATTERY PACKS





ONE YEAR LIMITED WARRANTY

Your Browning Trail Camera warranty covers your trail camera for one year. We warrant that your camera will be free from defects in workmanship and materials when operated in normal use and conditions. This warranty will allow Browning Trail Cameras, at its discretion, to repair the product or replace it with a new or refurbished unit.

Warranty limitations:

This warranty does not cover cameras that have been:

1. Neglected or abused (including, but not limited to water damage caused by submersion, battery leakage, or improper storage).
2. Modifications or repairs by unauthorized agents.
3. Damaged cameras that have cracked or broken outer cases due to excessive impact, heat or mishandling.
4. Damages caused by wild animals.

WARRANTY SERVICE

In the event warranty service is needed, contact Browning Trail Cameras customer service at 1.888.618.4496. Our knowledgeable agents can help troubleshoot any issues with your trail camera. In the event your camera needs to be returned for service, our agents will provide the needed information. You will also need your original receipt, or proof of purchase for warranty service. You are responsible for packaging and shipping cost of your camera unit to our warranty center.



This equipment has been tested and found to comply with the limits for a Class B digital device, pursuant to part 15 of the FCC Rules. These limits are designed to provide reasonable protection against harmful interference in a residential installation. This equipment generates, uses and can radiate radio frequency energy and, if not installed and used in accordance with the instructions, may cause harmful interference to radio communications. However, there is no guarantee that interference will not occur in a particular installation. If this equipment does cause harmful interference to radio or television reception, which can be determined by turning the equipment off and on, the user is encouraged to try to correct the interference by one or more of the following measures:

- Reorient or relocate the receiving antenna.
- Increase the separation between the equipment and receiver.
- Connect the equipment into an outlet on a circuit different from that to which the receiver is connected.
- Consult the dealer or an experienced radio/TV technician for help.

Caution: Changes or modifications not expressly approved by the party responsible could void the user's authority to operate this device.



Camera Specifications

PHOTOS	YES
Ultra	26MP
High	16MP
Medium	10MP
Low	4MP
VIDEOS	YES
High	1920x1080 @30fps (1080p)
Ultra	1920x1080 @ 60fps (1080p)
Length	5, 10, 20, 30 sec. 1, 2 min.
Sound	YES
TIMELAPSE	YES
Modes	Timelapse plus IR triggered pictures
Timelapse Delay	5, 10, 20, 30, 60 sec., 1, 2, 5, 10, 30, 60 min.
Effective Pixels	Day Sensor:4208x2368 Night Sensor:1920x1080
Removeable Memory	up to 512GB
Trigger Time	0.15 Seconds
Field of View	55 degrees
Shooting Modes	Still, Video, Timelapse Plus
Battery requirements	6AA Alkaline or Lithium Batteries
Mounting	1" nylon strap 6" long
Aux. Power Input	12V
IR Detection	100ft. Average
IR Flash Illumination	130ft.
Certifications	FCC, CE
Info printed on Picture	time, date, moonphase, temp, cam ID
Other features	SD card management, Smart IR Video

SD Card Selection

Number of pictures, videos, or timelapse segments that can be stored on each size SD card. Actual picture counts may vary.

	8GB	16GB	32GB
PHOTOS			
26MP	620	1240	2480
16MP	950	1900	3600
10MP	1500	3000	6000
4MP	3800	7600	20000
VIDEOS (20 Seconds)			
Ultra Resolution	75	150	300
High Resolution	150	300	600
TIMELAPSE			
All Day @ 1 Min.intervals	16 days	32 days	64 days



BROWNING®

TRAIL CAMERAS



Manufactured and Distributed by:

Prometheus Group, LLC P.O. Box 130100

Birmingham, Alabama 35213-0100

1-888-618-4496

©Prometheus Group, LLC

Browning trademarks licensed from Browning