

**SPYPOINT**<sup>®</sup>

# FORCE-DARK & COMPARABLES\*



## QUICK START GUIDE

## IN THE BOX

- 1 X Camera
- 1 X Mounting bracket
- 1 X Installation strap
- 1 X Quick Start Guide

**Note:** Memory card and batteries are sold separately.

User manual, latest firmware & FAQ available at  
**[support.spypoint.com](http://support.spypoint.com)**

## COMPONENTS

- |                               |                       |
|-------------------------------|-----------------------|
| 1 Photo lens                  | 9 Tripod mount        |
| 2 Test light                  | 10 Cable lock hole    |
| 3 Detection lens              | 11 LED                |
| 4 Power jack 12V              | 12 Button OK          |
| 5 Microphone                  | 13 Navigation buttons |
| 6 Light BUSY                  | 14 Viewing screen     |
| 7 Battery housing             | 15 Card Slot SD       |
| 8 Slot for installation strap |                       |

\*Specifications and characteristics may vary depending on comparable models. Refer to the web site or the packaging for details.

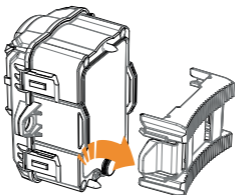


## PREPARATION

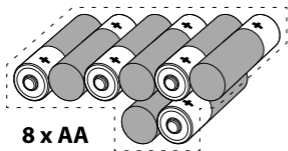
### REMOVING THE CAMERA FROM THE MOUNTING BRACKET

ENGLISH

- Push the tab to remove the camera from the mounting bracket;
- Remove the camera;

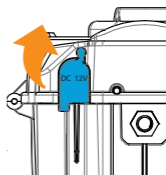


### CHOOSING A POWER SOURCE



**8 x AA**

Lithium or Alkaline batteries



12V power  
source

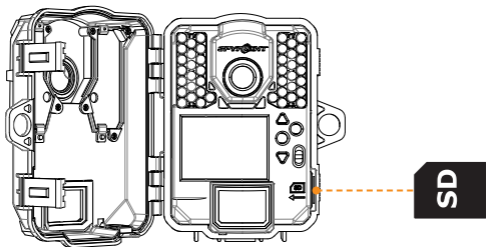


**Be sure to insert the AA batteries according to the polarity indications (+) and (-).**

To ensure maximum performance of the camera and prevent battery leakage, we recommend using new batteries. Use **ONLY** Lithium batteries or **ONLY** Alkaline batteries. Rechargeable [AA] batteries are not recommended as the lower voltage they produce can cause operational issues.

## INSERTING A MEMORY CARD

Always ensure that the camera is turned off before inserting a memory card. Insert an SD/SDHC memory card up to 32 GB capacity into the SD card slot with the label side facing upwards. The card is inserted correctly when a click is heard.



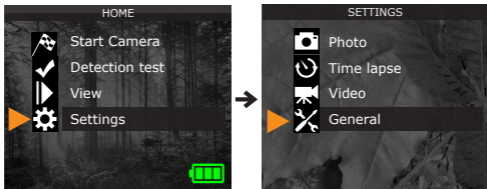
**We recommend formatting your SD card if it's been in another electronic device.**

## CONFIGURATION

Use the buttons ▲ and ▼ to navigate the menus and change options, the OK button to select and the BACK button to return to the previous menu.

### CONFIGURING THE GENERAL SETTINGS

- A. To turn ON/OFF the camera, press and hold the OK button;



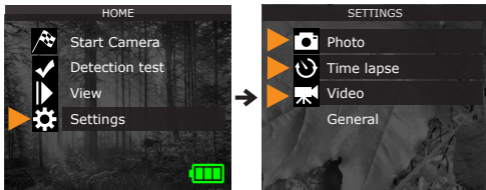
- B. From the home menu, select SETTINGS then, GENERAL to access the general configuration menu;
- C. Set the **Date** (MM/DD/YY or DD/MM/YY);
- D. Set the **Time** (hour/minute);
- E. Set the **Nighttime Mode** (best option for photos)

### COMPARISON OF HYBRID ILLUMINATION MODES\*

	NO GLOW MODE	OPTIMAL MODE	IR-BOOST MODE	BLUR REDUCTION MODE
Invisibility of the LEDs	★★★★★	★★★★★	★★★★★	★★★★★
Battery life	★★★★★	★★★★★	★★★★★	★★★★★
Flash range	★★★★★	★★★★★	★★★★★	★★★★★
Blur reduction	★★★★★	★★★★★	★★★★★	★★★★★

## CONFIGURING THE SETTINGS FOR THE 3 OPERATING MODES

From the home menu, select SETTINGS then PHOTO, TIME LAPSE or VIDEO to access the respective mode configuration menu.



### PHOTO

**Delay:** Sets the time interval between each detection before the camera takes the next photo.

**Multi-photo:** Takes up to 6 consecutive shots at each detection with a 5 second delay between each photo.

### TIME LAPSE

**Interval:** This option allows the camera to take photos at regular pre-set intervals without movement detection.

### VIDEO

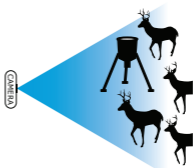
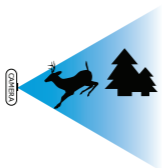
**Delay:** Sets the time interval between each detection before the camera records the next video.

**Video length:** Allows the user to select the duration of the recording.

**First photo:** When this option is enabled, a photo is taken immediately before each video.

## SUGGESTED PHOTO MODE CONFIGURATION

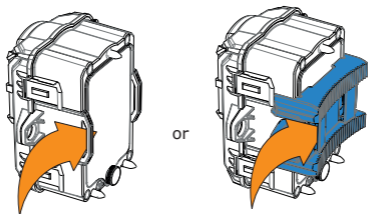
ENGLISH



	Usage in trails	Usage by a feeder
Delay	Instant	5 min
Multi-shot	1	1-3



## INSTALLATION AND MOUNTING BRACKET



When the camera is installed using the mounting bracket, it can be removed to access the battery case without disturbing the installation.

### **Recommended installation height:**

The camera should be installed at the same height as the animal's mid-body

### **Ideal installation for quality images and videos:**

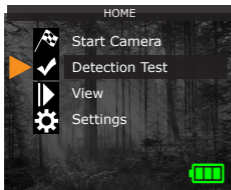
The targeted animal should be 7.5 m away from the camera for a better field of view.

To get brighter pictures at night, you should have elements in the background to reflect back the camera's flash.

Please note that the camera should not be placed directly facing the sun to avoid backlighting and false detections.

## TESTING THE CAMERA'S MOTION DETECTION CAPABILITY

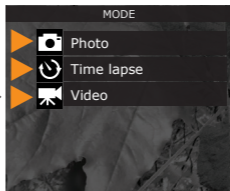
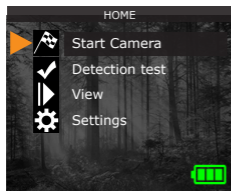
ENGLISH



The test light flashes when the camera detects motion. If the system does not detect motion, increase the detection sensitivity using the "Sensitivity" option in the SETTINGS/GENERAL menu. Adjust the camera's position as needed. In TEST mode, you can take a photo by pressing the OK button. The photo will be saved and displayed in VIEWING mode.

## STARTING THE CAMERA

Select the desired operating mode (photo, time lapse or video) from the mode menu by pressing OK.



When the mode is selected, the test light on the front of the camera will flash for 30 seconds to allow the user to leave the site without being photographed or filmed.



**30 s**

# THANK YOU

for choosing



Sit back & relax as this camera is covered by the "Know you're covered" 2-year warranty.

We strive to provide our customers with a positive experience and an outstanding service.

User manual, latest firmware & FAQ available at  
**[support.spypoint.com](http://support.spypoint.com)**

Online support at [SPYPOINT.COM](http://SPYPOINT.COM)  
[service@spypoint.com](mailto:service@spypoint.com)

## Join the community

Facebook: [www.facebook.com/spypoint/](http://www.facebook.com/spypoint/)

Youtube: [www.youtube.com/user/SpypointTrailCam](http://www.youtube.com/user/SpypointTrailCam)

Instagram: [@spypointcamera](https://www.instagram.com/spypointcamera)

Flickr: [www.flickr.com/photos/spypoint/](http://www.flickr.com/photos/spypoint/)