



BROWNING[®]

TRAIL CAMERAS

III 850
DEFENDER

LONG RANGE IR FLASH

MODEL BTC-9D



PLEASE READ THIS MANUAL BEFORE USE

INSTRUCTION MANUAL



BROWNING[®]

TRAIL CAMERAS

Thank you for purchasing a Browning Trail Camera. Our trail cameras are constructed of the finest workmanship and materials available. As hunters ourselves, we have designed our products to help you get the most of your time in the field. We hope you enjoy scouting game for years to come with your new Browning Trail Camera.

Our customer service team is here to help you with any questions you may have operating or setting up your new trail camera. Our representatives are available Monday through Friday from 9am to 5pm CST.

Toll Free Customer Service: 1.888.618.4496

Customer Service email: service@browningtrailcams.com

TABLE OF CONTENTS

Package Contents	1
Removing Camera from Housing	2
Camera Diagram	3
Battery Installation	4
SD Card Installation	5
Camera Programming	6
Camera Main Screen	7
Time and Date	8
Capture Mode	9
Photo and Video Quality	10
Video Length / Picture Delay	11
Multishot Settings	12
Temperature / Camera Name	13
Motion Test / Info Strip	14
Timelapse Settings	15
Default Settings / IR Flash Settings	16
Smart IR / SD Card Management	17
Delete Images / Software Upgrade	18
App Installation	19
Pairing Camera to App	20
Enabling WiFi	21
App Functions	22
Field Installation	23
Buck Watch Viewer Installation	24
Warranty	25
FCC	26
Camera Specifications / SD card size chart	27
Cautions	28



Getting Started

Package contents:

- 4- CR123 Lithium Batteries**
- 1- 16GB Micro SD card with adaptor**
- 1- Trail Camera**
- 1- 6' Tree Strap**
- 1- Instruction Manual**

SD Card Selection

If you purchase additional micro SD cards, choose a good quality Browning, Sandisk or Kingston branded card with a class 10 or higher rating for best results. Your Defender camera can operate on standard class 10 or higher micro SD cards ranging from 4-32 GB. You can also use higher capacity SDXC cards ranging from 64-512GB. Please see page 27 for a graph showing how many photos, videos and timelapse segments can be stored on SDHC or SDXC cards. Based on your intended camera usage, this table will help you determine what size SD card you need to use in your camera.

Camera Housing

Remove and discard the small plastic retaining pin from the cable locking loops in the camera mount housing.

To remove the camera from the housing, pull up slightly on the top of the housing. The door will open and the camera can be removed.



← RETAINING
PIN





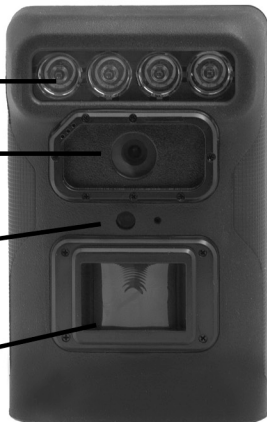
Camera Diagram

IR LED ARRAY

CAMERA SENSOR

LIGHT SENSOR

MOTION SENSOR

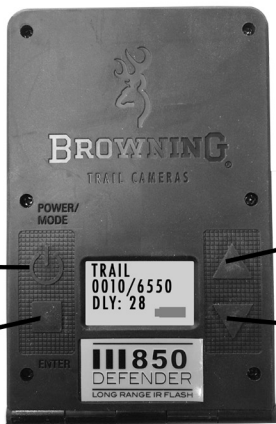


POWER/
MODE
BUTTON

UP BUTTON

ENTER
BUTTON

DOWN BUTTON



Battery Installation

Open the battery door on the bottom of the camera by turning the lock clockwise. Insert the 4 CR-123 Lithium batteries in the camera. Close and lock the battery door.





SD Card Installation

Your micro SD card has an SD card adaptor that will slide into any SD card slot so you can view images and videos on your computer.

Remove the micro SD card from the adaptor.



Open the SD card door on the side of the Defender camera. Insert the micro SD card into the card slot with the logo side of the card facing the front of the camera. Press the card all the way into the camera until you hear a “click” sound.

Camera Programming

Your Defender camera can be programmed by the input controls on the back of the camera, or via the Defender smartphone app that is available for use on Apple iOS or Android devices.

The manual will first cover programming the Defender camera using the buttons on the back of the camera. The last section of the manual will concentrate on using the Browning Defender smartphone app to change camera settings, view live images and playback pictures and videos taken stored on the SD card.



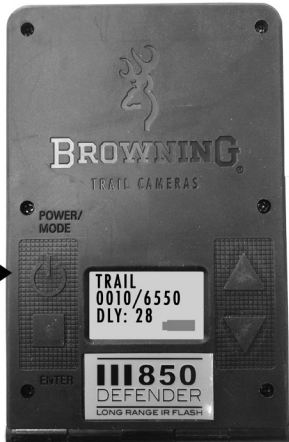


Main Screen

Turn the camera's power on by pressing and holding the **POWER** button on the back of the camera for 3 seconds.

POWER BUTTON →

The Main screen displays the camera operation mode, pictures or videos taken, pictures or videos possible on the SD card, camera delay countdown and battery life meter. With home screen displayed, the camera is armed and ready to start taking pictures.

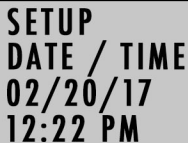


The possible camera modes displayed are Trail, Video and Timelapse Plus.

The delay countdown changes to RDY to indicate the camera is ready to take a picture.

The battery life meter shows the state of charge left in your batteries.

Set Time and Date



SETUP
DATE / TIME
02/20/17
12:22 PM

To Set the time and date:

From the HOME screen, press and release the POWER/MODE button once. This will take you to the SET TIME AND DATE screen.

Press the ENTER button once. The month selection will begin flashing. Use the UP and DOWN buttons to set the correct month.

When finished setting the month, press the ENTER key to advance to set the correct day. Continue through all settings in this manner until the correct time and date appear.

Press the ENTER button once after you have made your selection for AM/PM. This will lock in your settings

Once finished, press the DOWN ARROW key to continue to the next camera setting option.





Capture Mode

To set the camera's **CAPTURE MODE**, press the **ENTER** button once. The selection **TRAIL** will begin to flash.

**OPERATION
MODE
TRAIL**

Using the **UP** or **DOWN** arrow keys, select the operation mode for your camera. Press the **ENTER** key when finished.
CAPTURE MODE OPTIONS:

- **TRAIL CAM** This setting will take still pictures of game during the day and night, when motion is detected. This is the most popular setting for trail camera use. If you are new to trail cameras, this is the best setting to use.
- **VIDEO MODE** This setting will take HD video clips of game during the day and night.
- **TIMELAPSE PLUS** Timelapse Plus mode takes pictures during the day at pre set intervals, which is good for scouting a large open field where you are not sure where game is travelling. In addition, your camera will also take motion activated pictures as well during the day and night to make sure you do not miss any game activity.

To continue and set the camera's **PHOTO QUALITY**, press the **DOWN** arrow once.

Photo Quality

To set the PHOTO QUALITY, press the ENTER button once. The selection will begin flashing. Use the UP and DOWN arrow keys to make your selection.

OPTIONS:

-LOW 4 MP

-MED 8 MP

-HIGH 12 MP

-ULTRA 20 MP

Press the ENTER button to save. Press the DOWN arrow to continue to VIDEO QUALITY.

PHOTO
QUALITY
8M

Video Quality

To change your video settings, press the ENTER button once to make the default selection flash. Use the UP and DOWN arrows to change selections. Press the ENTER button to save the changes.

VIDEO RESOLUTION

Both video settings capture in 1280 x 720 resolution. The difference between ULTRA and HIGH video settings is the amount of compression used when saving the video file. The ULTRA setting uses less compression when saving the file. This allows for a higher quality video, but the file size will be large.

VIDEO
QUALITY
ULTRA





Video Length

VIDEO LENGTH

You can select the length of your video clip as well in the VIDEO LENGTH window. Your options are: 5, 10, 20, 30 seconds, 1 minute or 2 minute lengths.

NOTES:

To conserve battery power, your night videos are limited to a maximum time of 20 seconds. For example, if your video length is set at 30 seconds, your camera will take 30 second videos during the day, and your night videos will be limited to 20 seconds.

Press the DOWN arrow once to proceed to the PICTURE DELAY.

**VIDEO
LENGTH
10 SEC**

Picture Delay

To set the PICTURE DELAY, press the ENTER button once. The selection will begin flashing. Use the UP and DOWN arrow keys to make your selection.

DELAY OPTIONS:

5, 10, 20, 30 seconds

1, 5, 10, 30, 60 minutes.

Press the ENTER button to save selection.

The PHOTO DELAY option allows you to choose how much of a "timeout" there is between taking still pictures or videos. Press the DOWN arrow to proceed to set MULTI SHOT mode.

**PICTURE
DELAY
1 MIN**

Multi Shot Modes

MULTI
SHOT
OFF



To program the **MULTI SHOT** mode, press the **ENTER** button once. The selection field will begin to flash. Make your selection using the **UP** and **DOWN** arrows. Press the **ENTER** button to save your selection.

Your Browning Trail Camera can take multiple shots each time the camera is triggered. The default setting is 1 picture. Your options are as follows:

-MULTI SHOT OFF This is the default setting. Your camera will only take 1 picture when triggered.

-MULTI SHOT STANDARD The selections available are 2-8 shots in this mode. If you select **4-SHOT STANDARD**, your camera will take 4 pictures, spaced 2 seconds apart when triggered.

-RAPID FIRE This selection allows rapid image capture. When triggered, your camera will take 2-8 **RAPID FIRE** shots, with only 0.3 seconds between pictures. Your available selections are 2-8 shots in this mode.



Temperature Units

Your temperature units can be displayed on the picture's info bar in Fahrenheit or Celsius.

To change the selection, Press the **ENTER** button once, and then use the **UP** and **DOWN** arrows to make your selection. Press **ENTER** to save your selection.

Press the the **DOWN** button to proceed to the next setting.

TEMP
UNITS
F

Camera Name

You can add a custom name for your camera if needed. To name your camera, Press the **ENTER** button once. This will highlight the first character in the camera name. Use the **UP** and **DOWN** arrows to change the field. Press the **ENTER** button to move to the next letter. Your available characters are Capital A-Z, 0-9 or a blank space. When finished, press the **ENTER** key to save your selection.

Press the **DOWN** button to proceed to the next setting.

CAMERA
NAME
PINES2



Info Strip

INFO
STRIP
ON

Your trail camera has an information bar that is printed at the bottom of each photo taken. This info strip shows the following information: time, date, moonphase, temperature, and camera ID. This option can be turned on or off, using the UP and DOWN arrow buttons.

Press the DOWN BUTTON to continue to the Motion Test feature.

Motion Test

MOTION
TEST
OFF

Your trail camera is equipped with a MOTION TEST feature. This feature helps you aim the camera at your target area. With the motion test turned on, simply walk around in your target area. When your presence is detected, a red LED on the front of the camera will flash. Simply press the ENTER button, the selection will flash. Use the UP and DOWN arrows to change the option. Press the ENTER button to confirm selection.

Make sure you turn OFF the MOTION TEST function before leaving the camera in the field.

Press the DOWN arrow to proceed to the next setting.



Timelapse Settings

Your Browning Trail Camera has the ability to function as a timelapse camera. This is useful if you want to view the entire activity in a given area such as a large field. We recommend you use the TRAIL CAM mode for game when watching trails and feeding areas.

TL+
FREQ
1 MIN

TIMELAPSE FREQUENCY

Your trail camera can be set to take timelapse pictures at the following frequencies: 5, 10, 15, 30, 60 seconds; 1, 2, 5, 10, 30 and 60 minutes.

TIMELAPSE DURATION

The timelapse duration controls how many hours per day the camera captures timelapse images. Your available TIMELAPSE DURATION options are:

- ALL DAY Camera takes images from sunrise to sunset.
- 2, 3 or 4 HOUR These Durations limit the camera from taking images either 2, 3 or 4 hours after sunrise and 2,3 or 4 hours prior to sunset.

NOTE: Your trail camera learns the length of a day and constantly adjusts the 2, 3 or 4 hour duration modes automatically.

Press the DOWN arrow button to proceed to the next setting.

Default Settings

This feature allows you to return the camera settings back to the factory settings.

Adjustable IR Flash

IR FLASH
POWER
LONG RANGE

You can adjust the IR LED power in night photos to your specific application.

- | | |
|--------------------|---|
| Power Save | This is the most economical power setting. Perfect for wooded areas, and where game is within 70 ft. of the camera. |
| Long Range | This setting is perfect for pictures in open areas, or where game may be out to distances of 120 ft. |
| Fast Motion | This mode has a very fast exposure time. Perfect for trails and where game may be moving fast. |





Smart IR Video

Smart IR Video is a feature that will allow a daytime video clip to keep recording as long as the camera detects movement during filming. If the deer stands still in front of the camera and the camera does not detect movement, the camera will end the video clip. The maximum record time for a video clip using this feature is 5 minutes.

To enable Smart IR Video, press the ENTER button once, the NO will flash. Press the UP button once, the NO will change to YES. Press the ENTER button once to lock your selection.

Press the DOWN arrow to proceed to the next setting.

SD Card Management

By turning the SD Card Management feature ON, the camera will erase the oldest pictures or videos on the SD card when the SD card becomes full. This allows your camera to continue taking pictures if you can't get to the field to swap out SD cards.

If the SD Card Management feature is turned off, when your SD card fills up, the camera will not record any additional pictures or videos when triggered until you change out the SD card or delete the images.

Press the DOWN arrow to proceed to the next setting.

Delete All

By selecting **DELETE ALL**, all of the images on your SD card are erased. This function also reformats your SD card. It is a good idea to use the **DELETE ALL** function and reformat your SD card each time you install it in the camera for use.

Software Upgrade

The software upgrade function allows you to upgrade your software. If a software upgrade is available for your camera, it will be posted on our website, along with detailed instructions for upgrading at:
www.browningtrailcameras.com/customer-service





Using the Defender App

Your Defender camera can be used in conjunction with your Apple or Android based smartphone or tablet via the Browning Defender App. The Defender App allows you to control your camera remotely via WiFi connection to view and download photos and videos, change camera settings, remotely capture images and see a live preview of the cameras field of view. The effective distance that you can control your camera via the Defender App is approximately 60 yards, depending on the strength of the WiFi in your tablet or smartphone.

A complete step by step video of the Browning Defender camera App is available on our website at the following link:

www.browningtrailcameras.com/DefenderApp

App Installation

The Browning Defender App is available on iTunes and Google Play as a free download. To find the app, simply search for "Browning Trail Cameras".

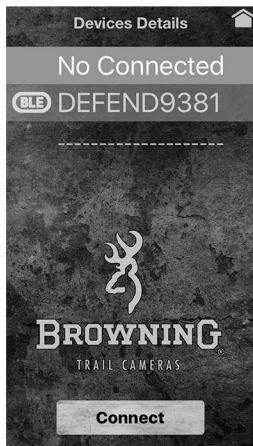
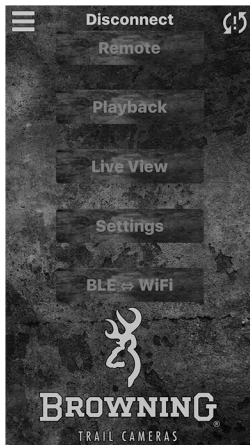
Install the App on your smartphone or tablet.



Pairing Devices

Power ON your Defender camera and start the Defender app on your phone or tablet.

Click on the icon that looks like 3 yellow dashes in the top left corner of the screen. This page will display the default camera name.



Highlight the name of the camera and press **CONNECT** on the App. This action pairs your Defender camera with your device via a Bluetooth connection.

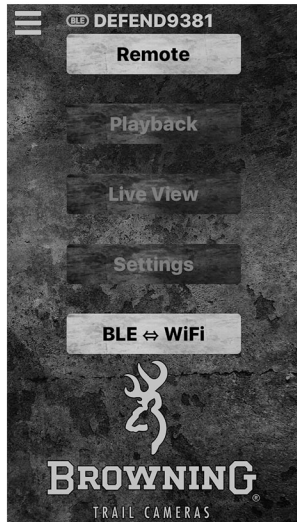


Turning On WiFi

Your camera and smartphone are now connected via a Low Energy Bluetooth connection notated by the blue BLE symbol next to the camera name.

Press the BLE-WiFi button on your app screen. This will switch your bluetooth connection to a WiFi connection.

When the WiFi on the Defender camera has been turned on, you will be prompted to go to the SETTINGS menu on your phone and connect to the Defender camera's WiFi network.



App Features

Once your Defender camera and smartphone are connected via the app, there are 4 main functions possible.

PLAYBACK

This feature allows you to view and download pictures and videos from your camera.

LIVE VIEW

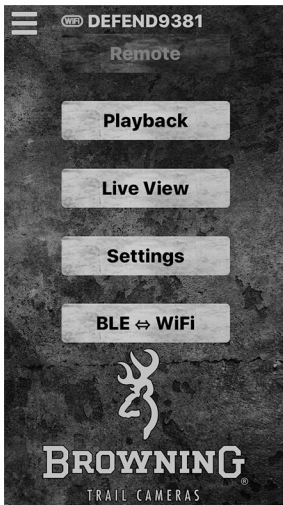
This feature allows you to see what your camera is actually seeing. This feature is helpful when mounting your camera on a tree.

SETTINGS

This feature allows you to change any camera setting.

BLE-WiFi

This button turns off WiFi and returns the device back to a Bluetooth connection.





Field Installation



- We recommend mounting your new trail camera at a height of approximately 3 feet off the ground.
- Use the adjustable tree mounting bracket on the camera housing to fine tune the camera's alignment to the desired area.
- The back of your Defender camera is equipped with a built in security cable loop. The security loop will accommodate a cable lock with a 5/16" cable.

Timelapse Viewer Installation



INSTALLING THE TIMELAPSE VIEWER SOFTWARE IS FOR VIEWING YOUR TIMELAPSE FILES. YOUR COMPUTER ALREADY HAS PROGRAMS INSTALLED TO VIEW STILL PICTURES AND VIDEOS CLIPS.

In order to playback your **TIMELAPSE FILES**, you need to install the Browning Buck Watch Timelapse Viewer software. This software will work on any PC running Windows XP or later versions. The Buck Watch Timelapse Viewer software can be downloaded from our website at:
www.browningtrailcameras.com/Buckwatch

IMPORTANT: Once you have loaded the Buck Watch viewer on your computer, a full set of operation instructions is available by clicking on the **HELP** icon in the viewer window.



Warranty

ONE YEAR LIMITED WARRANTY

Your Browning Trail Camera warranty covers your trail camera for one year. We warrant that your camera will be free from defects in workmanship and materials when operated in normal use and conditions. This warranty will allow Browning Trail Cameras, at its discretion, to repair the product or replace it with a new or refurbished unit.

Warranty limitations:

This warranty does not cover cameras that have been:

1. Neglected or abused (including, but not limited to water damage caused by submersion, battery leakage, or improper storage).
2. Modifications or repairs by unauthorized agents.
3. Damaged cameras that have cracked or broken outer cases due to excessive impact, heat or mishandling.
4. Damages caused by wild animals.

WARRANTY SERVICE

In the event warranty service is needed, contact Browning Trail Camera's customer service at 1.888.618.4496. Our knowledgeable agents can help troubleshoot any issues with your trail camera. In the event your camera needs to be returned for service, our agents will advise the correct mailing address for proper service of your unit. You will also need your original receipt, or proof of purchase for warranty service. You are responsible for packaging and shipping cost of your camera unit to our warranty center.

FCC Statement



This equipment has been tested and found to comply with the limits for a Class B digital device, pursuant to part 15 of the FCC Rules. These limits are designed to provide reasonable protection against harmful interference in a residential installation. This equipment generates, uses and can radiate radio frequency energy and, if not installed and used in accordance with the instructions, may cause harmful interference to radio communications. However, there is no guarantee that interference will not occur in a particular installation. If this equipment does cause harmful interference to radio or television reception, which can be determined by turning the equipment off and on, the user is encouraged to try to correct the interference by one or more of the following measures:

- Reorient or relocate the receiving antenna.
- Increase the separation between the equipment and receiver.
- Connect the equipment into an outlet on a circuit different from that to which the receiver is connected.
- Consult the dealer or an experienced radio/TV technician for help.

This device complies with Part 15 of the FCC Rules. Operation is subject to the following two conditions: (1) this device may not cause harmful interference, and (2) this device must accept any interference received, including interference that may cause undesired operation.

Caution: Changes or modifications not expressly approved by the party responsible could void the user's authority to operate this device.

Camera Specifications

PHOTOS	YES	Effective Pixels	1920x1080
Ultra	20MP	Removable Memory	up to 512GB microSD
High	12MP	Trigger Time	0.4 Seconds
Medium	8MP	Field of View	55 degrees
Low	4MP	Shooting Modes	Still, Video, Timelapse Plus
VIDEOS	YES	Battery Requirements	4 CR-123 Lithium Batteries
Ultra	1920 x 1080 60 fps	Mounting	1" nylon strap 6" long
High	1920 x 1080 30 fps	WiFi	Yes
Length	5, 10, 20, 30 sec. 2, 5 min.	IR Detection	80 ft. Average
Sound	YES	IR Flash Illumination	120 Ft.
TIMELAPSE	YES	Certifications	FCC, CE
Modes	Timelapse plus IR triggered pictures	Info printed on Picture	time, date, moonphase,temp, Cam ID
Timelapse Delays	5, 10, 15, 30, 60 sec., 1,2,5,10,30,60 min.	Other features	SD card Management, Smart IR Video

SD card selection

Number of pictures, videos or timelapse segments that can be stored on each size SD card. Actual picture counts may vary.

	8GB	16GB	32GB	64GB
PHOTOS				
20MP	950	1900	3800	7500
12MP	1600	3200	6000	12000
8MP	2250	4500	9000	18000
4MP	4500	9000	18000	36000
VIDEOS (20 Seconds)				
Ultra Resolution	64	120	240	480
High Resolution	126	240	480	960
TIMELAPSE				
All Day @ 1 Min.intervals	16 days	32 days	64 days	128 days

Cautions

- Risk of explosion if battery is replaced by an incorrect type. Dispose of used batteries according to the instructions.
- Caution: To maintain the compliance with the RF exposure guideline, place the unit at least 20 cm from nearby persons.





BROWNING[®]

TRAIL CAMERAS

III 850
DEFENDER

LONG RANGE IR FLASH

Manufactured and Distributed by:

Prometheus Group, LLC P.O. Box 130100
Birmingham, Alabama 35213-0100
1-888-618-4496

© Prometheus Group, LLC
Browning trademarks licensed from Browning