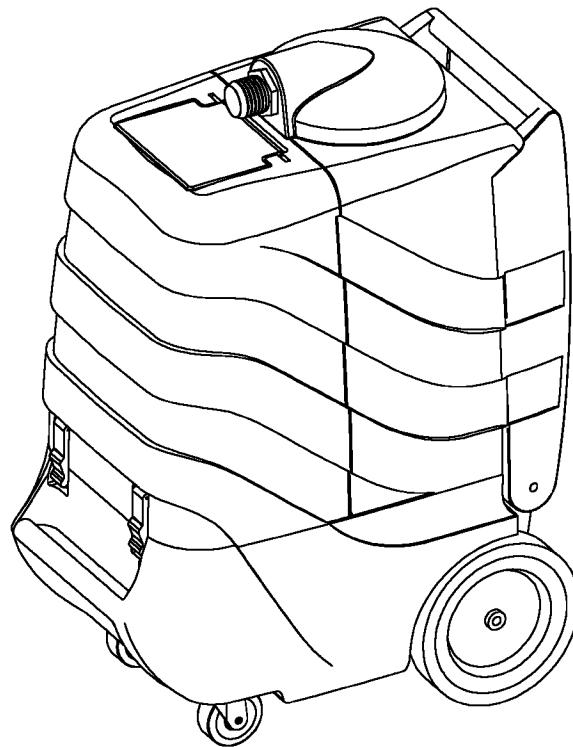




**TMF DUALY HEATED PORTABLE  
EXTRACTOR 800 PSI TILE, CARPET  
& UPHOLSTERY MACHINE**

**Operator and Parts Manual**



**TRUCK MOUNT FORUMS**  
1728 S Park Ct, Chesapeake,  
VA 23320

**CUSTOMER SERVICE: (800) 949-7726**

# OPERATION

---

This manual is furnished with each new model. It provides necessary operation and maintenance instructions and an illustrated parts list.

**Read this manual completely and understand the machine before operating or servicing it.**

Use the illustrated Parts Lists to order parts. Before ordering parts or supplies, be sure to have your machine model number and serial number handy. Parts and supplies may be ordered by phone or mail from any authorized parts and service center, distributor or directly from Truck Mount Forums.

This machine will provide excellent service. However, the best results will be obtained at minimum costs if:

- The machine is operated with reasonable care.
- The machine is maintained regularly – per the maintenance instructions provided.
- The machine is maintained with manufacturer supplied or equivalent parts.

---

## MACHINE DATA

---

Please fill out at time of installation for future reference.

Model No.- \_\_\_\_\_

Install. Date- \_\_\_\_\_

Serial No.- \_\_\_\_\_

---

---

## TABLE OF CONTENTS

---

|                                      |           |
|--------------------------------------|-----------|
| <b>SAFETY PRECAUTIONS .....</b>      | <b>3</b>  |
| <b>MACHINE COMPONENTS .....</b>      | <b>4</b>  |
| <b>MACHINE SETUP .....</b>           | <b>4</b>  |
| <b>MACHINE OPERATION .....</b>       | <b>5</b>  |
| <b>FREEZE PROTECTION.....</b>        | <b>6</b>  |
| <b>MACHINE MAINTENANCE .....</b>     | <b>6</b>  |
| <b>STORING MACHINE.....</b>          | <b>7</b>  |
| <b>RECOMMENDED STOCK ITEMS .....</b> | <b>7</b>  |
| <b>TROUBLE SHOOTING .....</b>        | <b>8</b>  |
| <b>SPECIFICATIONS.....</b>           | <b>9</b>  |
| <b>ELECTRICAL DIAGRAM.....</b>       | <b>10</b> |
| <b>PARTS LIST.....</b>               | <b>11</b> |
| <b>WARRANTY POLICY .....</b>         | <b>15</b> |

# OPERATION

## SAFETY PRECAUTIONS

This machine is intended for commercial use. It is designed to wet clean carpet and upholstery in a indoor environment and is not constructed for any other use. Use only recommended cleaning solutions.

All operators must read, understand and practice the following safety precautions.

The following safety alert symbols are used throughout this manual as indicated in their description:

**⚠ WARNING: To warn of hazards or unsafe practices which could result in severe personal injury or death.**

**FOR SAFETY: To identify actions which must be followed for safe operation of equipment.**

The following information signals potentially dangerous conditions to the operator or equipment.

**FOR SAFETY:**

1. Do not operate machine:
  - Unless trained and authorized.
  - Unless operator manual is read and understood.
  - Around explosive or flammable vapors.
  - To extract flammable or explosive liquids.
  - With damaged cord or plug.
  - If not in proper operating condition.
  - Unless cord is properly grounded.
  - As a dry vacuum.
  - In standing water.
  - With the use of an extension cord.
2. Before operating machine:
  - Make sure all safety devices are in place and operate properly.
3. When using machine:
  - Do not run machine over cord.
  - Do not pull machine by plug or cord.
  - Do not pull cord around sharp edges or corners.
  - Do not unplug by pulling on cord.
  - Do not stretch cord.
  - Do not handle plugs with wet hands.
  - Do not allow water or foam to enter vacuum. Float ball is not activated by foam. Damage not covered by warranty will result.
  - Keep cord away from heated surfaces.
  - Report machine damage or faulty operation immediately.

- Use defoamer to protect vacuums. If foam exits machine turn it off immediately.
  - Be certain submersible pump is secured in bottom of tank.
  - Connect hoses before turning on pump.
4. Before leaving or servicing machine:
    - Turn off machine.
    - Unplug cord from wall outlet.
    - Drain all recovered solution from tank.
  5. When servicing machine:
    - Unplug cord from wall outlet.
    - Avoid moving parts. Do not wear loose jackets, shirts, or sleeves.
    - Use manufacturer supplied or approved replacement parts.
    - Have service performed by authorized service person.

**⚠ WARNING: Hazardous Voltage. Shock or electrocution can result. Always unplug machine before servicing.**

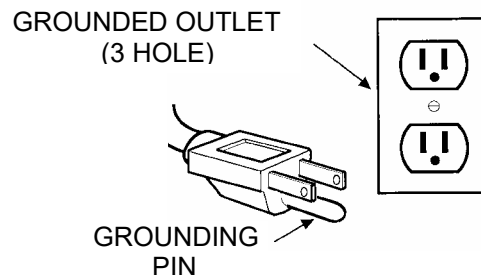
**⚠ WARNING: Flammable materials can cause an explosion or fire. Do not vacuum into tank.**

**⚠ WARNING: Flammable materials or reactive metals can cause an explosion or fire. Do not pick up.**

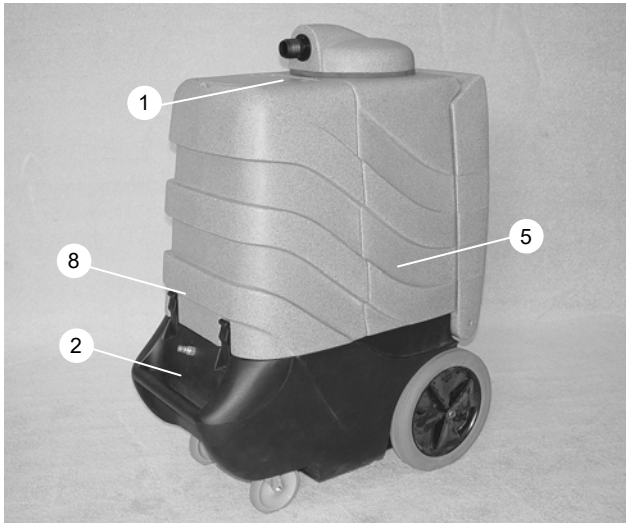
**⚠ WARNING: Contents of solution hoses may be under pressure even after pump is off.**

## GROUNDING INSTRUCTIONS

Machine must be grounded. If it should malfunction or breakdown, grounding provides a path of least resistance for electrical current to reduce the risk of electrical shock. This machine is equipped with a cord having an equipment-grounding connector and grounding plug. The plug must be plugged into an appropriate outlet that is properly installed in accordance with all local codes and ordinances. Do not remove ground pin; if missing, replace plug before use. International models will have different cord ends.



# OPERATION



## MACHINE COMPONENTS

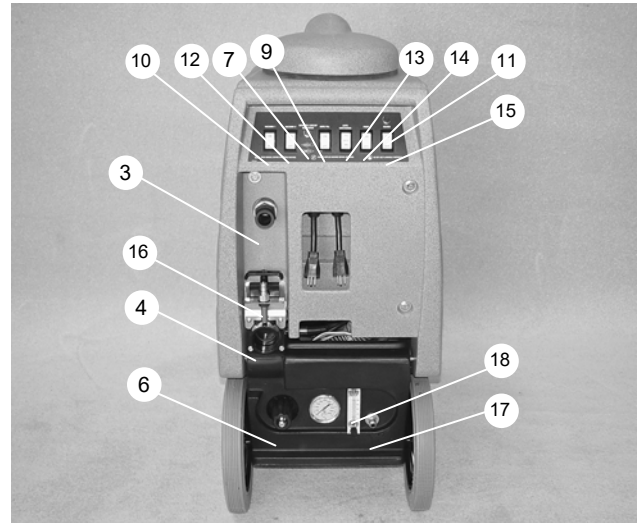
1. Vacuum Inlet
2. Solution Hose Connector
3. Waste Discharge Connector
4. Manual Drain
5. Vacuum Tank
6. Pressure Adjusting Valve
7. Separate Circuit Indicator Light
8. Solution Tank
9. Auto Fill Switch

## MACHINE SETUP

1. Carefully check carton for signs of damage. Report damages at once to carrier. The machine is shipped fully assembled and is ready for use.
2. Connect hoses and tool to be used. Attach a  $\frac{3}{4}$ " garden hose to the waste discharge connector on the back of the machine and place the other end of the hose in a waste water receptacle. An inline filter is recommended to prevent excessive lint and debris from entering tank and fouling discharge pump. Attach a second garden hose to the input pump. Attach a second garden hose to the input connector using the supplied adapter (Figure 1).



Fig. 1



10. Vacuum 1 Switch
11. Heater "ON" Indicator Light
12. Vacuum 2 Switch
13. Auto Discharge Pump Switch
14. Solution Pump Switch
15. Heater Switch
16. Empty Out / Priming Nozzle
17. Water Input Connector
18. Chemical Metering Valve

3. With vacuum hose connected to the vacuum lid, rotate vacuum lid slightly off center so solution lid can open. Lift chemical suction hose from storage

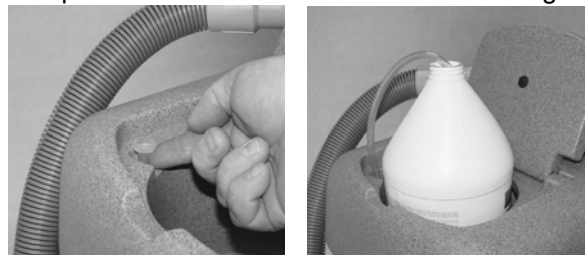


Fig. 2

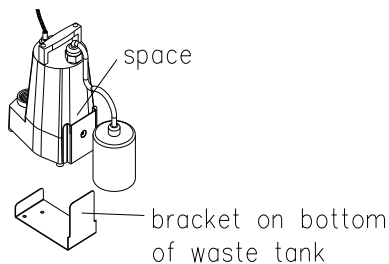
location and place inside 1 gallon chemical bottle. Set the bottle in cavity provided (Figure 2).

**⚠ WARNING: Do not vacuum up flammable materials as they could cause an explosion or fire.**

 **WARNING:** Do not use acidic chemicals through pump as damage to pump not covered by warranty may result.

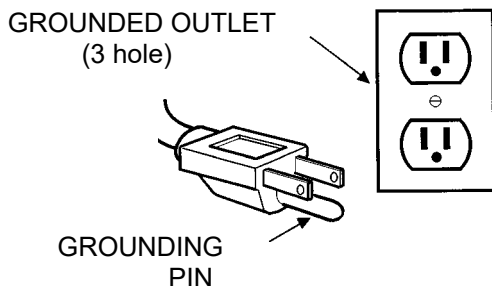
# OPERATION

- Look inside recovery tank and be certain that submersible pump is secured properly to bracket on the bottom of the tank (Figure 3). Take note of the space between the case of the flood pump and the attached stainless steel bracket. Lower the pump so this space engages the bracket mounted in the bottom of the recovery tank. Also be certain that nothing is obstructing the free movement of the float switch.



**Fig. 3**

- Plug machine's power cords into grounded wall outlets on separate circuits (Figure 4). Green circuit indicator light on switch panel illuminated confirms connection to separate circuits.



**Fig. 4**

**FOR SAFETY: Do not operate machine unless cord is properly grounded.**

**FOR SAFETY: Do not operate machine with the use of an extension cord.**

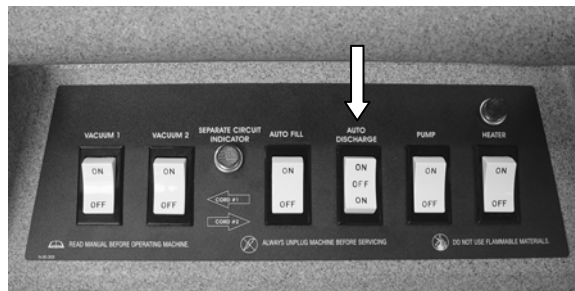
## MACHINE OPERATION

**FOR SAFETY: Do not operate machine unless entire operator manual is read and understood.**

### PRE-OPERATION, SETUP, AND HEATING

- Inspect power cord for damage.
- Turn on discharge pump switch (Figure 5). The discharge pump will not come on until the level

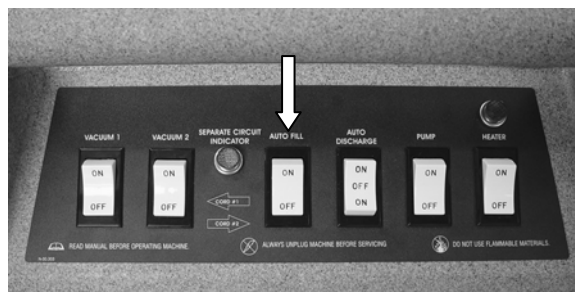
inside the recovery tank activates the float switch. Note: the "Auto Discharge" switch must be turned on in order for the discharge pump to cycle on and off. Never turn this switch "ON" without



**Fig. 5**

connecting discharge hose.

- Turn on water faucet supplying water to the machine. Next turn on the "Auto Fill" switch (Figure 6).
- While water is entering the solution tank adjust knob on "Chemical Metering Valve" to achieve the desired mixture of chemical to water. Note: chemical is being mixed with water while tank is filling not necessarily when spraying solution through cleaning wand. The chart below shows the approximate mixture ratio achieved with different gauge settings.



**Fig. 6**

| Setting | Chemical Ratio | Water Ratio |
|---------|----------------|-------------|
| 10      | 0.19           | 1:673       |
| 20      | 0.25           | 1:512       |
| 30      | 0.31           | 1:412       |
| 40      | 0.37           | 1:345       |
| 50      | 0.43           | 1:297       |
| 60      | 0.50           | 1:256       |
| 70      | 0.59           | 1:216       |
| 80      | 0.70           | 1:182       |
| 90      | 0.79           | 1:162       |
| 100     | 0.88           | 1:145       |

## OPERATION

---

5. Turn on heater. While heating the red light above the heater switch will be on. After about 5 minutes the heater will be up to temperature and the red light will go out.

---

### CLEANING CARPETS

1. Activate the pump and vacuum switches.
2. Adjust pump pressure while spraying solution from carpet cleaning wand. Note: The operating pressure will not register on the pressure gauge unless solution is spraying out a wand. Do not clean carpets with pressure over 500 psi as damage to the carpet may result.
3. Take carpet cleaning wand in hand and squeeze valve trigger while moving the tool in short forward and backward strokes (Figure 7).

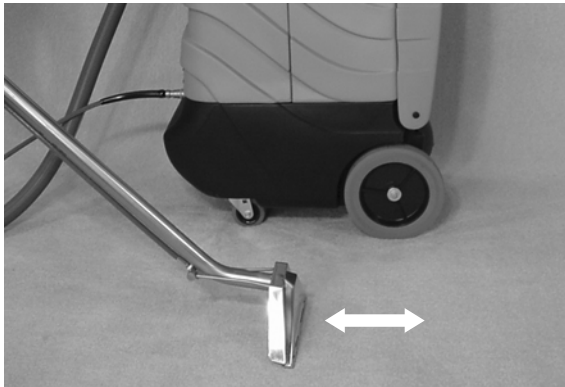


Fig. 7

---

### WHILE OPERATING – CLEANING CARPETS

1. Overlap each path by 50 mm (2 in).  
**⚠ Warning: Flammable materials or reactive metals can cause an explosion or fire. Do not pick up.**
2. Periodically check for excessive foam buildup in recovery tank. Use a recommended foam control solution to prevent vacuum motor damage. If using an inline vacuum filter as recommended on page 4 Figure 1, place a small sponge soaked in defoamer inside filter. Be careful it does not block the air flow through the filter. This is an effective way to gradually add defoamer to incoming waste water.
3. Note: Whenever the waste discharge pump is activated, the heater is temporarily turned off. Once the waste pump turns off, the heater will come back on.

**ATTENTION: Excessive foam buildup will not activate the float shut-off screen.**

**ATTENTION: Discharge pump will not pump foam. Use a defoamer.**

4. To clean heavily soiled areas, repeat cleaning path from a different direction.
5. If operating in the manual mode, empty recovery tank every time water is added to solution tank.

---

### CLEANING TILE

1. Activate the pressure pump and vacuum switches.
  2. Adjust pump pressure while spraying solution from hard surface cleaning wand. Note: The operating pressure will not register on the pressure gauge unless solution is spraying out of a wand.
  3. Apply cleaning chemicals to the surface to be cleaned with a separate application sprayer. Follow chemical manufacturer's instructions for selection of chemical and dwell time before pressure rinsing with this machine.
- ATTENTION: This machine is designed to deliver high pressure fresh water to the tile surface and extract emulsified soil. It is designed to mix chemicals with incoming water; however, do not use acidic chemicals through the chemical metering system and solution pump as damage to the pump may occur.**
4. Take hard surface or tile cleaning tool in hand and move in the direction that compliments tool design intermittently spraying rinsing solution.

---

### WHILE OPERATING – CLEANING TILE

1. Periodically check for excessive foam buildup in recover tank. Use a recommended foam control solution to prevent vacuum motor damage.  
**⚠ Warning: Flammable materials or reactive metals can cause an explosion or fire. Do not pick up.**

**ATTENTION: Excessive foam buildup will not activate the float shut-off screen.**

**ATTENTION: Discharge pump will not pump foam. Use a defoamer.**

# OPERATION

## DRAINING TANKS

### DRAINING RECOVERY TANK

1. Turn off machine after majority of water has been pumped out by discharge pump.
2. Insert supplied 45° elbow in drain valve. Place a bucket below it and slowly pull up on handle (Figure 8).



Fig. 8

3. Rinse tank with clean water at the end of the day.

### DRAINING SOLUTION TANK

1. Prior to cleaning the last 9 square meters (100 square feet) turn off the "Auto Fill" switch. By doing this, the solution tank should be near empty when the job is completed.
2. Remove the empty-out nozzle from its storage bracket (Figure 9) and attach to end of solution hose.



Fig. 9

3. Place empty-out nozzle over a bucket and turn on pump until all the solution has been pumped from solution tank.
4. Replace empty-out nozzle to its storage place.

## FREEZE PROTECTION

1. After draining solution tank as described in preceding section, place empty-out nozzle in end of vacuum hose and seal with hand (Figure 10).

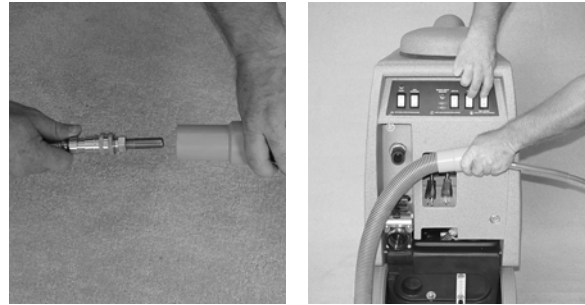


Fig. 10

2. Turn on vacuum and pump for 15 seconds. This will fill the pump and hoses with air and prevent freezing
3. Replace freeze protection drain nozzle to its storage place.

## MACHINE MAINTENANCE

To keep machine in good working condition simply follow machine's daily, weekly, and monthly maintenance procedures.

**For Safety: When servicing machine unplug cords from wall outlet.**

### DAILY MAINTENANCE (Every 4 hours of operation)

1. Empty and rinse out recovery tank thoroughly.
2. Remove float shut off screen from recovery tank and clean (Figure 11).

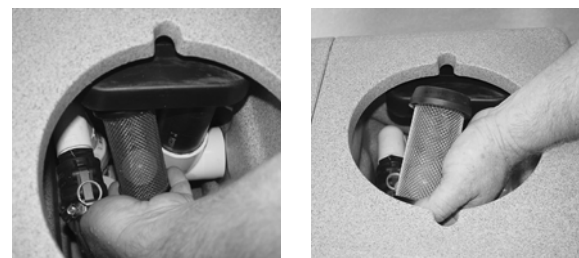


Fig. 11

3. Wipe off power cord and check for damage. Replace if necessary. Coil cord neatly after use.



# OPERATION

4. Clean machine with an all purpose cleaner and damp cloth.
5. Unlatch locking arms of bayonet coupler attached to pump (Figure 12).



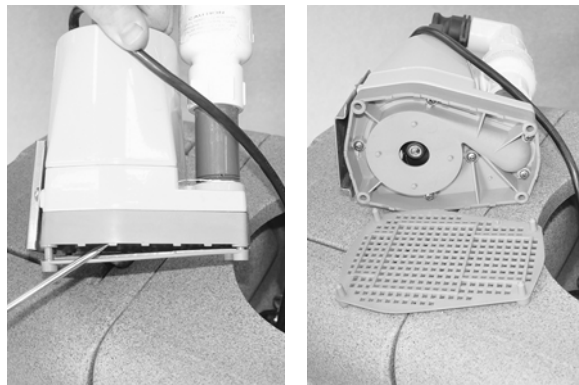
**Fig. 12**

6. Lift flood pump off mounting bracket located in the bottom of recovery tank. Note its position so it can be returned to this location.
7. Guide float switch and discharge pump through hole in top of waste tank (Figure 13).



**Fig. 13**

8. Remove lint and debris from filter on bottom of pump (Figure 14). Remove base filter if necessary.



**Fig. 14**

---

## WEEKLY MAINTENANCE (Every 20 hours of operation)

1. Inspect vacuum hoses for holes and loose cuffs.
2. Lubricate metal shaft on recovery tank drain

---

## MONTHLY MAINTENANCE (Every 80 hours of operation)

- 1. Lubricate wheels with water resistant oil.
2. Inspect machine for water leaks and loose hardware.
3. Open machine and inspect wiring and replace wiring harness if signs of corrosion or heat.

---

## STORING MACHINE

1. Before storing machine, be certain to drain and rinse tank
2. Store machine in a dry area in an upright position.
3. Open recovery tank lid to promote air circulation.

---

## RECOMMENDED STOCK ITEMS

Refer to Parts List section for recommended stock items. Stock items are clearly identified with a bullet preceding the part number. See example below.

| PART #        | DESCRIPTION                  | QTY. |
|---------------|------------------------------|------|
| J-30.         | LID, DOME                    | 1    |
| • J-38GRANITE | TOP,SOL TANK ROTO GRANITE    | 1    |
| J-39.5GRANITE | HANDLE,WASTE TANK ROTO GRANI | 1    |
| J-39GRANITE   | WASTE TANK, ROTO GRANITE     | 1    |

# OPERATION

---

## TROUBLE SHOOTING

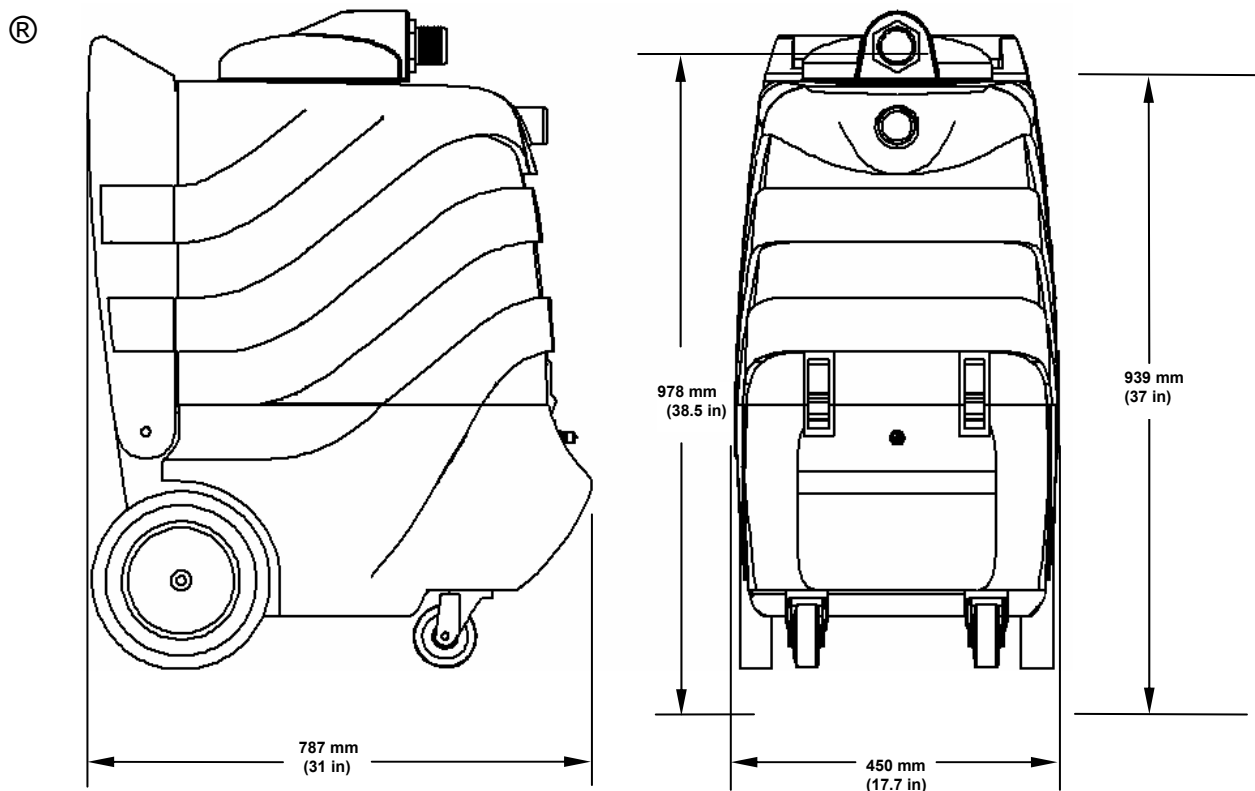
| PROBLEM                                   | CAUSE                                   | SOLUTION                                   |
|---|---|--|
| Machine does not operate.                 | Faulty switches or wiring.              | Contact Service Center.                    |
|   | Faulty power cord.                      | Contact Service Center.                    |
|   | Building circuit breaker tripped.       | Reset Breaker.                             |
| Vacuum motor does not operate.            | Loose or broken wiring.                 | Contact Service Center.                    |
|   | Faulty vacuum switch.                   | Contact Service Center.                    |
|   | Defective vacuum motor.                 | Contact Service Center.                    |
|   | Worn carbon brushes.                    | Contact Service Center.                    |
| Solution pump does not operate.           | Faulty switch or wiring.                | Contact Service Center.                    |
|   | Faulty solution pump motor.             | Contact Service Center.                    |
|   | Trigger on wand not pulled.             | Pull Solution Trigger.                     |
|   | Quick couplers not fully engaged.       | Connect quick couplers.                    |
|   | Faulty pump head.                       | Contact Service Center.                    |
| Flood pump does not work                  | Faulty switch or wiring.                | Contact Service Center.                    |
|   | Float switch tangled in cord.           | Untangle cord in vacuum tank.              |
|   | Filter screen clogged                   | Clean filter screen under flood pump.      |
|   | Output of flood pump disconnected.      | Connect quick coupler in waste tank.       |
| Flood pump does not discharge fast enough | Small diameter garden hose              | Use ¾" minimum diameter garden hose.       |
|   | Pump filter screen plugged with debris. | Clean filter screen                        |
|   | Check valve plugged with debris         | Clean or replace check valve.              |
| Poor solution pick-up.                    | Recovery tank drain valve open.         | Close valve.                               |
|   | Defective recovery tank lid gasket.     | Replace gasket.                            |
|   | Clogged float shut-off screen.          | Remove recovery tank lid and clean screen. |
|   | Loose vacuum hose connections.          | Secure cuffs to hose.                      |
|   | Defective vacuum hose.                  | Replace hose.                              |

## OPERATION

|  |   |
|--|---|
| <b>Model</b>   | <b>37485K3</b>                                    |
| LENGTH   | 711 mm (28 in)                                    |
| WIDTH  | 450 mm (17.7 in)                                  |
| HEIGHT   | 978 mm (38.5 in)                                  |
| WEIGHT   | 55.8 Kg (123lbs)                                  |
| RECOVERY TANK CAPACITY                                 | 41 L (11 gal)                                     |
| SOLUTION PUMP  | 120V, 55.1 BAR (800 PSI), 7.8A                    |
| DISCHARGE PUMP   | 120 V, 94.6 LPM (25 GPM), 5 A                     |
| VACUUM MOTOR – 2- 2 STAGE PARALLEL                     | 2 @ 120V, 8.5 A, 1020W.                           |
| SEALED WATER LIFT                                      | 2337 mm (92 in) 5.66CMM (200 CFM)                 |
| TOTAL POWER CONSUMPTION                                | CIR 1– 120V, 19A, 2280W CIR 2– 120V, 15.6A, 1872W |
| POWER CORDS  | 2 @ 7.6m (25 ft) 3/12                             |
| DECIBEL RATING 3 METERS (10 FT) FROM MACHINE ON CARPET | <68 db(A)   |

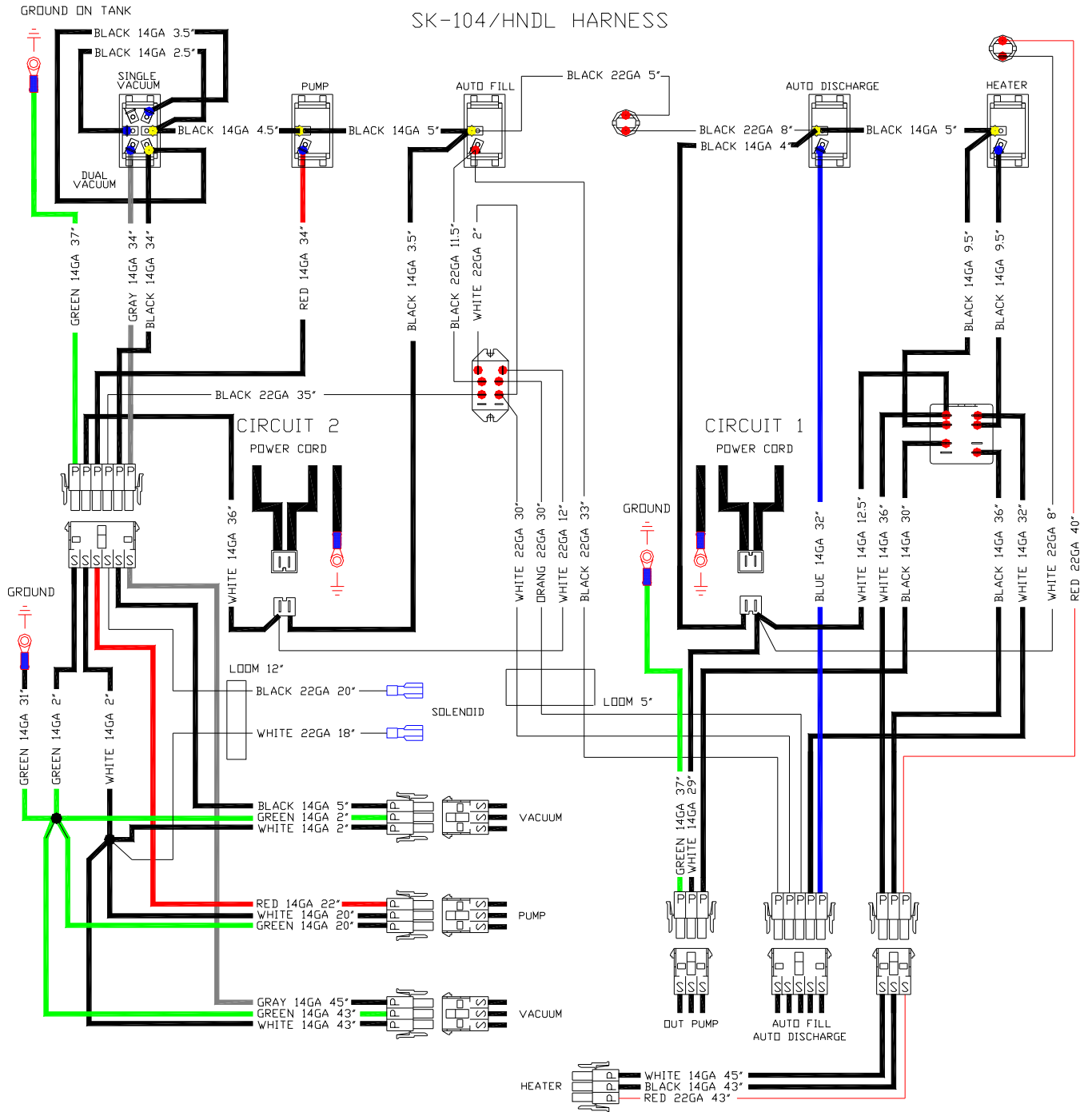
## SPECIFICATIONS

### MACHINE DIMENSIONS

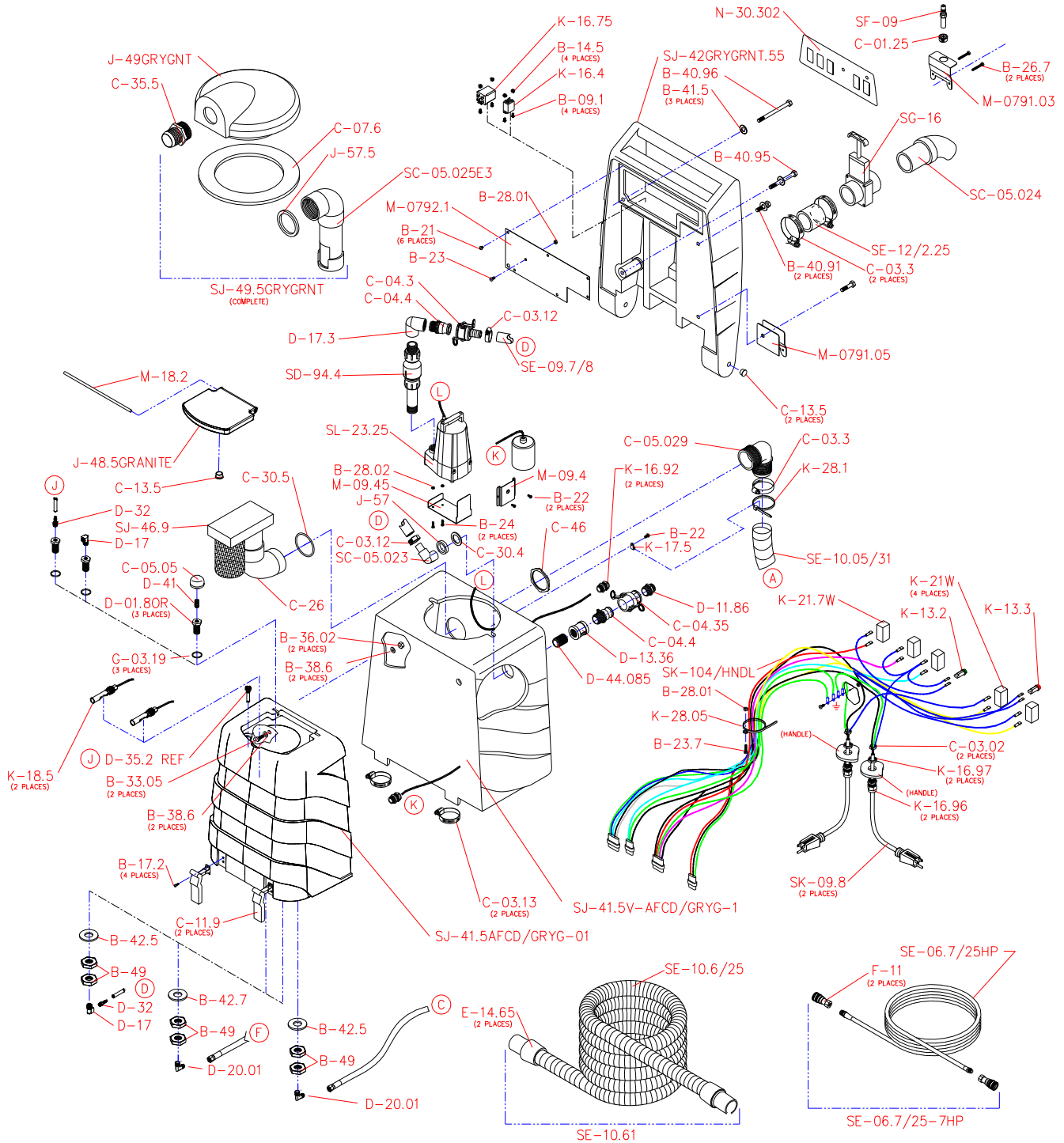


# ELECTRICAL DIAGRAM

## 120 V WIRING DIAGRAM



**TANK GROUP**



# PARTS LIST

## TANK GROUP

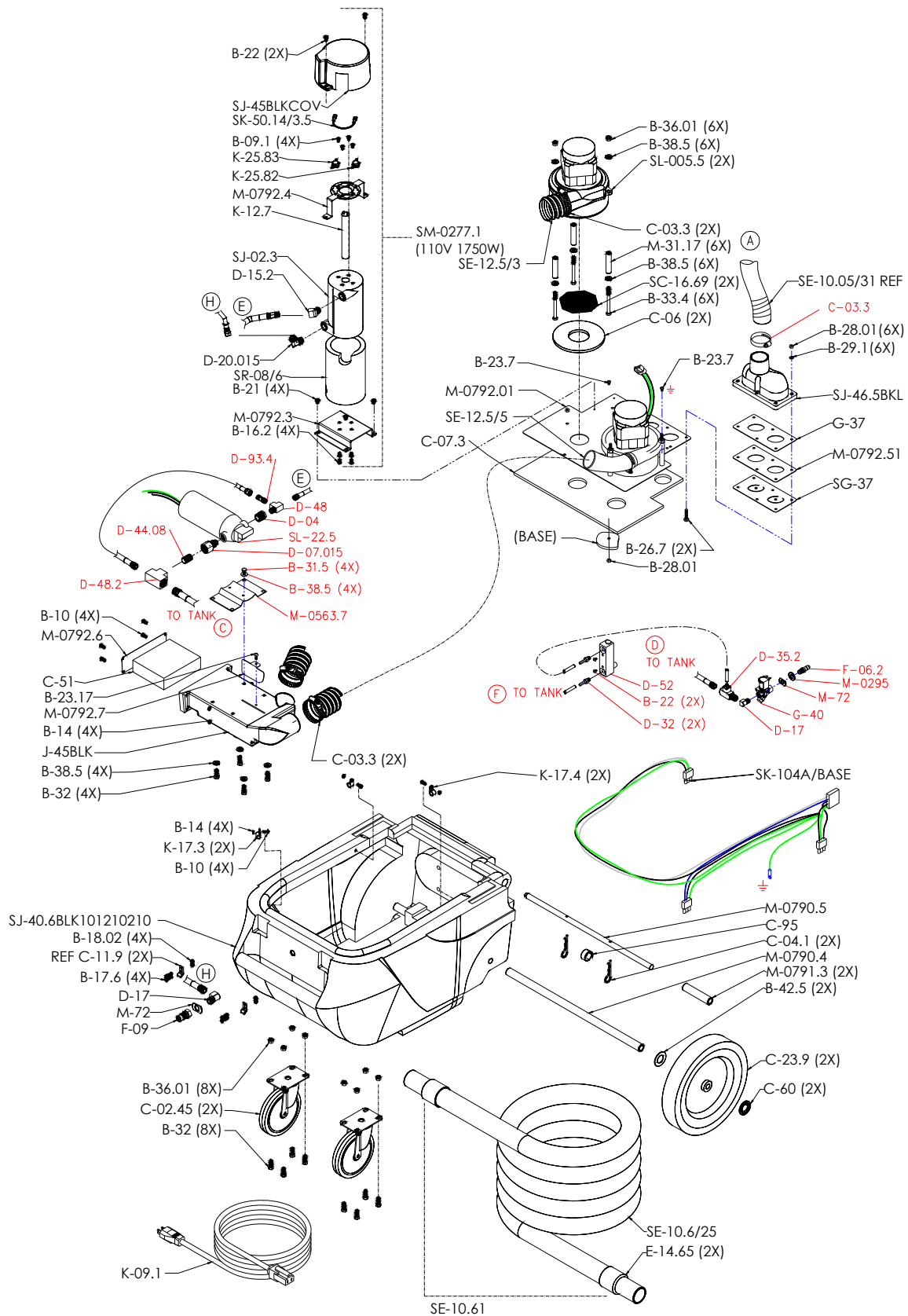
| PART #          | DESCRIPTION                        | QTY. |
|-----------------|------------------------------------|------|
| B-17.2          | 8-32 X 1/2 PHXSS                   | 4    |
| B-21            | 10-32 X 5/16 PHXSS                 | 8    |
| B-22            | 10-32 X 7/16 PHXSS                 | 2    |
| B-23.7          | 10-32 X 5/8 PHXSS                  | 1    |
| B-24            | 10-32 X 3/4 PHXSS                  | 3    |
| B-26.7          | 10-32 X 1 1/2 PHXZINC              | 2    |
| B-28.01         | NUT 10-32 HEX ZINC                 | 2    |
| B-28.02         | NUT, 10-32 SS NYLOCK               | 4    |
| B-40.91         | 3/8-16 X 1 1/2 HEX ZINC            | 2    |
| B-40.95         | 3/8-16 X 3 1/2 HEX ZINC            | 1    |
| B-40.96         | 3/8-16 X 4 HEX ZINC                | 1    |
| B-41.5          | WASHER, 3/8 FLAT ZINC              | 3    |
| C-03.02         | CLAMP, HOSE 1/4" #4                | 2    |
| C-03.13         | CLAMP, HOSE 1 3/4 #20              | 2    |
| C-03.3          | CLAMP, HOSE 2 1/4 #32              | 3    |
| C-04.3          | COUPLER, QC SHANK 1" HOSE          | 1    |
| C-04.35         | COUPLER, QC SHANK 1" X 1" FPT      | 1    |
| C-04.4          | COUPLER, QC MALE 1" HOSE           | 1    |
| C-05.029        | ELBOW, 90 2" INSERT X 2 MPT PVC    | 1    |
| C-07.6          | GASKET, LID FLD WATER RMVL&EDGE3   | 1    |
| C-11.9          | LATCH, SOFT DRAW BLACK             | 2    |
| C-13.5          | PLUG, HOLE NYLON .562              | 2    |
| C-26            | FLOAT, VAC SHUT OFF ROTO           | 1    |
| C-30.4          | GASKET, 1" ID FLAT RUBBER          | 1    |
| C-30.5          | GASKET, 2" ID RUBBER               | 1    |
| C-35.6          | HOSE BARB, 2" MPT X 2" BARB        | 1    |
| C-46            | LOCKNUT, 2" METAL                  | 1    |
| D-13.35         | COUPLING, 3/4" GALVANIZED          | 1    |
| D-44.085        | NIPPLE 3/4" CLOSE PVC              | 1    |
| E-15            | CUFF, 2" SLIP 2.000" HOSE          | 2    |
| J-41HZN/EXTRACT | TANK, EDGE HZN ROTO MEGA EXTRACTIO | 1    |

| PART #         | DESCRIPTION                         | QTY. |
|----------------|-------------------------------------|------|
| J-49SANDSTONE  | LID, MEGA/E3 ROTO SANDSTONE         | 1    |
| J-57           | SPACER, ROTO 1.5" OD X 1.0" ID      | 1    |
| J-57.5         | SPACER, ROTO 3" OD X 2.4" ID        | 1    |
| K-13.2         | LIGHT, GREEN ROUND                  | 1    |
| K-16.92        | BUSHING, RELIEF 3/8 NPT             | 1    |
| K-16.96        | BUSHING, RELIEF 1/2 NPT             | 2    |
| K-16.97        | NUT, NYLON BUSHING REL. 1/2         | 2    |
| K-17.5         | CLAMPS, NYLON CABLE 3/8             | 2    |
| • K-21W        | SWITCH, SPST WATER RESIS            | 4    |
| K-28.05        | TIE, WIRE NYLON #10 SCREW           | 1    |
| K-28.1         | TIE WRAP, 8" LONG NATURAL           | 1    |
| M-0791.05      | BRACKET, DUMP VAL MNT EDGE          | 1    |
| M-0792.1       | PLATE, HANDLE SW COVR EDGE          | 1    |
| M-09.2         | BRACKET, SUB PUMP CORD SUPPORT MEGA | 1    |
| M-09.4         | BRACKET, SIDE PUMPT MOUNT MEGA      | 1    |
| M-09.45        | BRACKET, BASE PUMP MOUNT MEGA       | 1    |
| N-30.320       | PNL, SW TMF V V C1 P D              | 1    |
| SC-04.4        | COUPLER, QC MALE 1" 5/64 PRIME HOLE | 1    |
| SC-05.028      | ELBOW, PVC ASSY MEGA LID COMPLETE   | 1    |
| • SD-94.6      | CHECK VALVE, COMPLETE ASM MEGA      | 1    |
| SE-09.6/28     | HOSE, 1 3/8 TYGON CLR BRD 28" LONG  | 1    |
| SE-11.5        | HOSE, 2" X 25' W/ 2" X 2" CUFF      | 1    |
| SE-12/2.25     | HOSE, 2" VINYL X 2.25"              | 1    |
| • SG-16        | VALVE, DUMP 1.5 W/PVC EXT           | 1    |
| SJ-42HZN.3     | HNDL, ED 4 SWT & 1 CI LIGHT HZN     | 1    |
| SJ-46.9        | MANIFOLD, ASM FILTER SHUT OFF 2"    | 1    |
| SJ-49ST        | LID, VAC MEGA DRK BLUE STMT C       | 1    |
| SK-09.2B       | CORD, 25' 12/3 SJT W/TREM APPL      | 2    |
| SK-84HZN1/HNDL | HARNES, HZN HNDL C2VV CI C1PD       | 1    |
| • SL-23.25     | PUMP, SUBMSBLE 115V W/FLT TRMNTD    | 1    |

- RECOMMENDED STOCK ITEMS

# PARTS LIST

## BASE GROUP



# PARTS LIST

## BASE GROUP

| PART #    | DESCRIPTION                         | QTY. |
|-----------|-------------------------------------|------|
| B-10      | 6-32 X 1/2 PHXSS                    | 8    |
| B-14      | NUT 6-32 HEX SS                     | 8    |
| B-17.6    | 8-32 X 3/4PHX ZINC                  | 4    |
| B-18.02   | NUT 8-32 NYLOK, ZINC                | 4    |
| B-21      | 10-32 X 5/16 PHXSS                  | 1    |
| B-23.17   | 10 X 1/2 SELF TAP HEX               | 1    |
| B-23.7    | 10-32 X 5/8 PHXSS                   | 1    |
| B-28.01   | NUT 10-32 HEX ZINC                  | 1    |
| B-31.5    | 1/4-20 X 1/2 HEX CP                 | 8    |
| B-32      | 1/4-20 X 3/4 HEX HD CP              | 13   |
| B-33.38   | 1/4-20 X 3 HEX HD CP                | 6    |
| B-36.01   | NUT 1/4-20 NYLOK ZINK               | 14   |
| B-38.5    | WASHER, 1/4 FLAT CP                 | 28   |
| B-42.4    | WASHER,5/8 FLAT BLKHD CP            | 1    |
| B-42.5    | WASHER, 3/4 FLAT CP                 | 2    |
| C-02.45   | CASTER, 5" SWIVEL                   | 2    |
| C-03.15   | CLAMP, HOSE 25/32"                  | 6    |
| C-03.3    | CLAMP, HOSE 2 1/4 #32               | 5    |
| C-04.1    | COTTER, HAIRPIN 7/16-9/16           | 2    |
| • C-05.10 | FILTER, IN-LINE ASM 1/2BRB X 1/2BRD | 1    |
| C-06      | GASKET, BLOWER/ARLON 1/4"           | 2    |
| C-07.3    | GASKET,VAC SEAL EDGE BASE           | 1    |
| C-13.5    | PLUG, HOLE NYLON .562               | 2    |
| C-23.9    | WHEEL, 12" W/ 3/4 BORE              | 2    |
| C-30.3    | GAUGE, PRESSURE 0-2000 PSI          | 1    |
| C-51      | MUFFLER, FOAM EDGE                  | 1    |
| C-60      | RETAINER,PUSH-ON 3/4"ZINC           | 2    |
| C-95      | VELCRO, ONE WRAP STRAP 1/2" X 12"   | 3    |
| D-04.03   | BUSHING 3/4 X 3/8 NPT BR.           | 1    |
| D-15.2    | 45 ST ELBOW 1/4 NPT                 | 1    |
| D-17      | 90 ST ELBOW 1/4" NPT                | 1    |
| D-17.1    | ELBOW,ST 3/8" NPT                   | 6    |
| D-18.4    | ELBOW, 90 1/4NPT X 1/2 BARB         | 1    |
| D-35.03   | HOSE BARB 3/8 NPT X 1/2HS           | 3    |

| PART #              | DESCRIPTION                         | QTY. |
|---------------------|-------------------------------------|------|
| E-04.10             | HOSE,PLS 34" 3/8MSVX1/4FP           | 1    |
| E-04.11             | HOSE,PLS 34" 1/4MSVX3/8MSV          | 1    |
| E-04.12             | HOSE,PLS 34" 3/8MSVX3/8MSV          | 1    |
| F-09                | Q/C 1/4" PLUG BR SHUT OFF           | 1    |
| F-11                | Q/C 1/4" SOC BR SHUT OFF            | 2    |
| • G-46.12           | VALVE, UNLOADER 1200 PSI            | 1    |
| J-45BLK             | PMP MNT,DRLD 2 VAC SILNCE BLCK ROTO | 1    |
| K-17.3              | CLAMP,NYLON CABLE 3/16"             | 2    |
| K-17.4              | CLAMP,NYLON CABLE 1/4"              | 2    |
| M-0563.8            | BRACKET, MTR STARTER CAP            | 1    |
| M-0606              | BRACKET, MOTOR MOUNT 1200PSI        | 1    |
| M-0790.4            | AXLE, ROD 3/4 EDGE 18.125"LONG      | 1    |
| M-0790.5            | AXIL, ROD 1/2 EDGE ECONO            | 1    |
| M-0791.3            | PIVOT, TUBE EDGE 3.400"             | 2    |
| M-0792.07NH         | PLATE,VAC MNT SERIES W/QUIT 2"X2"NH | 1    |
| M-0792.6            | PLATE, MUFFLER/PMP MOUNT COVER      | 1    |
| M-0792.7            | BRACKET, MANIFOLD DIV               | 1    |
| M-31.17             | STANDOFF, 5.7 EDGE 2.260"           | 6    |
| M-72                | SPACER, QUICK CONNECT               | 1    |
| SC-16.69            | SCREEN,BLOWER GUARD                 | 2    |
| SE-09.1/17B         | SOL HOSE, 1/2" X 17" LONG NO ENDS   | 1    |
| SE-06.7/25-7HP      | HOSE, 1/4 SOL 25"W/QC HIGH PRESSURE | 1    |
| SE-06.7/25HP        | HOSE, 1/4 SOL 25"NPT HP NO/QC       | 1    |
| SE-09.1/38          | SOL HOSE, 1/2" X 38" LONG NO ENDS   | 1    |
| SE-09.1/5.5         | SOL HOSE, 1/2" X 5.5" LONG NO ENDS  | 1    |
| SE-12.5/4           | HOSE,2" FLEX EXH 4"                 | 1    |
| SE-12.5/9           | HOSE, 2" FLEX EXH 9"                | 1    |
| SE-12.6/27          | HOSE, 2" CLR WIRE SUPPORT 27"LONG   | 1    |
| SJ-40.5BLK105209210 | BASE,DRLD SER W/QT HRZN STMT        | 1    |
| SK-84HZN1/BASE      | HARNESS, HZN BASE C2VV CI C1PD      | 1    |
| • SL-005.5          | BLOWER,2STG 120 5.7W/PLUG           | 2    |
| • SL-006.5          | BLOWER,3STG 120 5.7W/PLUG           | 0    |
| • SL-28.1200        | PUMP, 1200PSI CMP 110V              | 1    |

- RECOMMENDED STOCK ITEMS



## **TMF WARRANTY POLICY**

---

## **LABOR & PARTS POLICY**

---

For the first 12 months from the date of original purchase, upon Truck Mount Forums determination, product manufacturing defects will be repaired or replaced at no charge for labor and/or parts provided that the machine or part(s) is delivered or shipped freight prepaid to Truck Mount Forums or its designated repair center and provided that a Return Authorization is obtained from Truck Mount Forums prior to machine or part(s) being shipped. (See "How to Obtain a Return Authorization is obtained from Truck Mount Forums Authorization".)

Truck Mount Forums is not responsible to pay for parts supplied by or labor performed by any of its distribution or any general service companies.

## **PARTS ONLY – STANDARD REPLACEMENT POLICY**

---

For the first 12 months from the date of original purchase, in the event that a part believed to be under warranty fails, simply call Truck Mount Forums to obtain a Return Authorization, ship the part freight prepaid to TMF and, TMF will either repair or replace the part at no charge if it is determined that failure was a manufacturing defect. TMF will then ship the repaired or replaced part back to you freight collect. Our service department can usually talk a person through any part replacement procedure in a matter of minutes. There is no charge for this nationwide toll-free service.

## **PARTS ONLY – EMERGENCY REPLACEMENT POLICY**

---

For the first 12 months from the date of original purchase, in the event that a part believed by the registered owner to be under warranty fails and an immediate replacement part is requested before TMF can inspect the part that is suspected to be faulty or have a chance to repair it, TMF will ship the requested part on a COD basis (part plus freight) or if credit has been established prior to the request the part will be shipped on an Open Account basis (part plus freight). A Return Authorization must be requested at the time of order so that the suspected defective part can be returned freight prepaid to TMF for warranty consideration. If after receiving the part, TMF determines that the part has a manufacturing defect and can be repaired, the part will be repaired to normal working condition and returned (freight collect) to the original registered owner as a spare part and no refund will be made. Should TMF determine that the part is covered by warranty and cannot be repaired, TMF will credit an open account customer the same amount as was charged when the replacement part was sent less freight and will refund a COD customer the same way. However, should TMF determine that the part received was not a manufacturing defect, you will be informed of such and credit will not be given nor will the damaged part be returned unless requested specifically to the registered owner.

## **HOW TO OBTAIN A RETURN AUTHORIZATION**

---

Prior to shipping any part, assembly or machine to TMF a Return Authorization Number must be requested from TMF and displayed prominently on the outside of all packages containing parts or machines for warranty consideration to be processed and in effect. A Return Authorization can be obtained by calling TMF Service Department at (800) 949-7726. The machine and/or part serial number must be communicated to TMF Customer Service to receive a Return Authorization Number. Any machine, part or assembly must be returned with its original serial number as affixed by TMF for warranty consideration to be in effect. All returns will be sent to Truck Mount Forums 1728 S Park Ct, Chesapeake, VA 23320 communications can be sent to CUSTOMER SERVICE: (800) 949-7726 and emails sent to support@truckmountforums.com

# WARRANTY

---

Truck Mount Forums warrants the TMF Cleaning Machine against defects in material and workmanship under normal use and service. TMF, hereby, extends a limited three-year warranty on the polyethylene machine housing of the TMF against cracking or leaking and a one-year warranty on the rest of the machine against manufacturing defect or workmanship subject to the terms and conditions that follow.

## TERMS AND CONDITIONS

The warranty obligation extends only to the repair or replacement of parts, assemblies or machine housing found upon examination by TMF to be defective in manufacturing or workmanship, and TMF reserves the right to make that determination. Any adjustment or replacement of defective parts made under this warranty does not void the warranty; neither does it extend the original warranty beyond its term.

Repair or replacements of any machine component(s) with any part(s) other than genuine TMF parts will immediately void this and all warranties.

Filters, brass fittings, seals, o-rings and quick disconnects are considered expendable in normal use and are not covered by this warranty.

Dry cleaning solvents cannot be used in the TMF.

This warranty shall not cover any TMF machine housing, part or assembly if there is evidence of misuse, alteration, owner neglect, lack of proper maintenance, improper chemical use, improper voltage, abuse, accident, freezing, flood, fire, etc. and any and all circumstances beyond TMF's control.

In no event shall TMF be liable for loss of use, incidental or consequential damages or any damages to persons or property.



TMF

1728 S Park Ct, Chesapeake, VA 23320  
Phone (800) 949-7726; support@truckmountforums.com

PLEASE RETURN REGISTRATION WITHIN 10 DAYS OF RECEIVING YOUR TMF CLEANING MACHINE.

**SPECIALS:** Check our web site at: [shop.truckmountforums.com](http://shop.truckmountforums.com) for parts and equipment price specials.

## KEEP THIS COPY FOR YOUR RECORDS

|                                  |                              |
|----------------------------------|------------------------------|
| <b>WARRANTY<br/>REGISTRATION</b> | Date Received                |
|                                  | Registered Owner(s)          |
|                                  | Address                      |
|                                  |                              |
|                                  | Phone Number                 |
|                                  | Fax Number                   |
|                                  | Email Address                |
|                                  | Machine Serial Number        |
|                                  | Purchased From (Distributor) |

# WARRANTY

---

Truck Mount Forums warrants the TMF Cleaning Machine against defects in material and workmanship under normal use and service. TMF, hereby, extends a limited three-year warranty on the polyethylene machine housing of the TMF against cracking or leaking and a one-year warranty on the rest of the machine against manufacturing defect or workmanship subject to the terms and conditions that follow.

## TERMS AND CONDITIONS

The warranty obligation extends only to the repair or replacement of parts, assemblies or machine housing found upon examination by TMF to be defective in manufacturing or workmanship, and TMF reserves the right to make that determination. Any adjustment or replacement of defective parts made under this warranty does not void the warranty; neither does it extend the original warranty beyond its term.

Repair or replacements of any machine component(s) with any part(s) other than genuine TMF parts will immediately void this and all warranties.

Filters, brass fittings, seals, o-rings and quick disconnects are considered expendable in normal use and are not covered by this warranty.

Dry cleaning solvents cannot be used in the TMF.

This warranty shall not cover any TMF machine housing, part or assembly if there is evidence of misuse, alteration, owner neglect, lack of proper maintenance, improper chemical use, improper voltage, abuse, accident, freezing, flood, fire, etc. and any and all circumstances beyond TMF's control.

In no event shall TMF be liable for loss of use, incidental or consequential damages or any damages to persons or property.



1728 S Park Ct, Chesapeake, VA 23320  
Phone (800) 949-7726; support@truckmountforums.com

PLEASE RETURN REGISTRATION WITHIN 10 DAYS OF RECEIVING YOUR TMF CLEANING MACHINE.

**SPECIALS:** Check our web site at: [shop.truckmountforums.com](http://shop.truckmountforums.com) for parts and equipment price specials.

PLEASE RETURN THIS ENTIRE SHEET

|                                  |                              |
|----------------------------------|------------------------------|
| <b>WARRANTY<br/>REGISTRATION</b> | Date Received                |
|                                  | Registered Owner(s)          |
|                                  | Address                      |
|                                  |                              |
|                                  | Phone Number                 |
|                                  | Fax Number                   |
|                                  | Email Address                |
|                                  | Machine Serial Number        |
|                                  | Purchased From (Distributor) |