

CBC

Summary

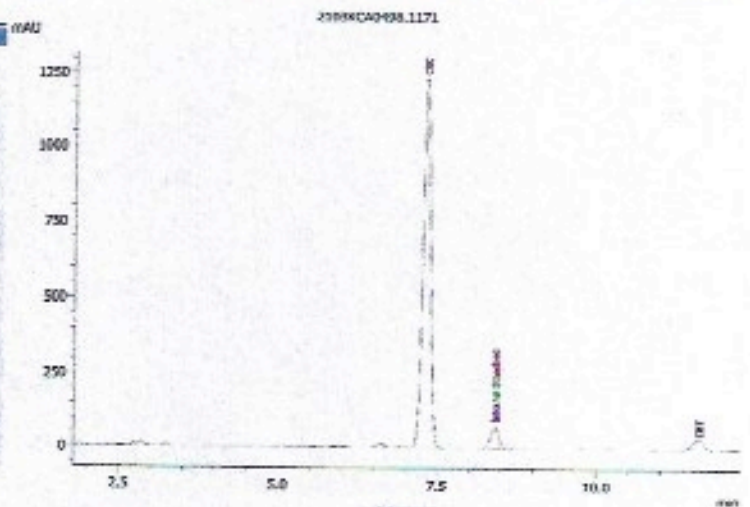
Test	Date Tested	Result
Cannabinoids	04/02/2021	Complete
Residual Solvents	04/06/2021	Complete
Microbials	04/05/2021	Complete
Mycotoxins	04/06/2021	Complete
Pesticides	04/06/2021	Complete
Heavy Metals	04/06/2021	Complete
Foreign Matter	04/06/2021	Pass

Cannabinoids by HPLC-PDA

Complete

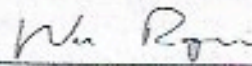
ND	ND	99.0617%	NT <i>Not Tested</i>	Pass
Total THC	Total CBD	Total Cannabinoids	Moisture Content	Foreign Matter

Analyte	LOD %	LOQ %	Result %	Result mg/g
CBC	0.0095	0.0284	95.6113	956.113
CBCA	0.0181	0.0543	ND	ND
CBCV	0.0060	0.0180	ND	ND
CBD	0.0081	0.0242	ND	ND
CBDa	0.0043	0.0130	ND	ND
CBDV	0.0061	0.0182	ND	ND
CBDVA	0.0021	0.0063	ND	ND
CBG	0.0057	0.0172	ND	ND
CBGA	0.0049	0.0147	ND	ND
CBL	0.0112	0.0335	ND	ND
CBLA	0.0124	0.0371	ND	ND
CBN	0.0056	0.0169	ND	ND
CBNA	0.0060	0.0181	ND	ND
CBT	0.0090	0.0211	3.45038	34.5038
Δ8-THC	0.0104	0.0312	ND	ND
Δ9-THC	0.0076	0.0227	ND	ND
THCA	0.0084	0.0251	ND	ND
THCV	0.0069	0.0206	ND	ND
THCVA	0.0062	0.0186	ND	ND
Total THC			ND	ND
Total CBD			ND	ND
Total			99.0617	990.617


 Total THC = THCA * 0.877 + Δ9-THC
 Total CBD = CBDa * 0.877 + CBD

 LOD = Limit of Detection
 LOQ = Limit of Quantitation
 ND = None Detected

For plant material, the reported result is based on a sample weight with the applicable moisture content for that sample.

 Wes Rogers
 Principal Scientist
 04/06/2021

This product or substance has been tested by KCA Laboratories using validated testing methodologies and a quality system. Values reported relate only to the product or substance tested. KCA Laboratories makes no claims as to the efficacy, safety or other risks associated with any detected or non-detected amounts of any substances reported herein. This Certificate of Analysis shall not be reproduced except in full, without the written approval of KCA Laboratories.

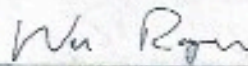
CBC

Heavy Metals by ICP-MS

Complete

Analyte	LOD	LOQ	Mass
	µg/g	µg/g	µg/g
Arsenic	0.002	0.02	ND
Cadmium	0.001	0.02	ND
Lead	0.002	0.02	ND
Mercury	0.012	0.05	ND

 Date Tested: 04/06/2021
 LOD = Limit of Detection
 LOQ = Limit of Quantitation
 ND = None Detected



 Wes Rogers
 Principal Scientist
 04/06/2021

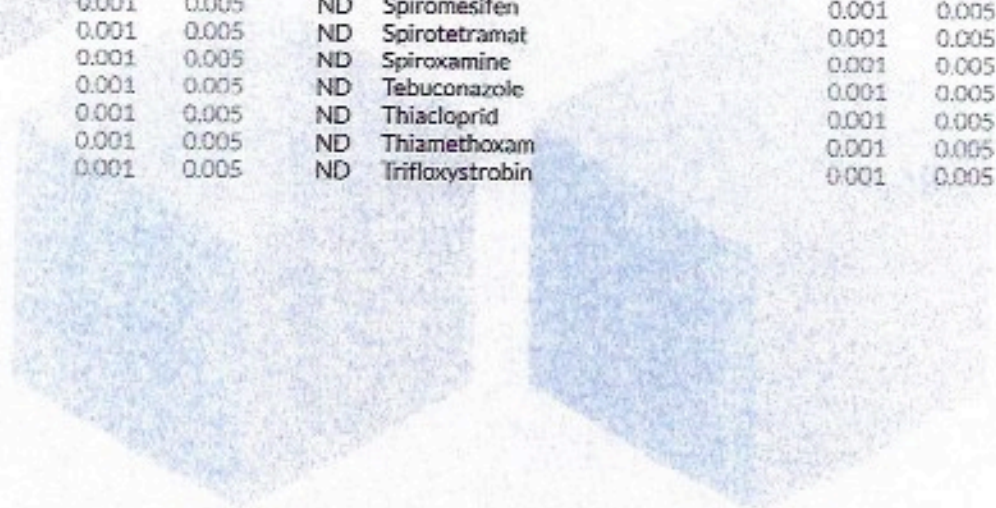
This product or substance has been tested by KCA Laboratories using validated testing methodologies and a quality system. Values reported relate only to the product or substance tested. KCA Laboratories makes no claims as to the efficacy, safety or other risks associated with any detected or non-detected amounts of any substances reported herein. This Certificate of Analysis shall not be reproduced except in full, without the written approval of KCA Laboratories.

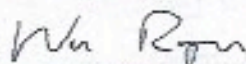
CBC

Pesticides by LCMS/MS & GCMS/MS

Complete

Analyte	LOD	LOQ	Mass	Analyte	LOD	LOQ	Mass
	PPM	PPM	PPM		PPM	PPM	PPM
Abamectin	0.001	0.005	ND	Imazalil	0.001	0.005	ND
Acephate	0.001	0.005	ND	Imidacloprid	0.001	0.005	ND
Acetamiprid	0.001	0.005	ND	Kresoxim Methyl	0.001	0.005	ND
Aldicarb	0.001	0.005	ND	Malathion	0.001	0.005	ND
Bifenazate	0.001	0.005	ND	Metaxyl	0.001	0.005	ND
Buscalid	0.001	0.005	ND	Methiocarb	0.001	0.005	ND
Carbaryl	0.001	0.005	ND	Methomyl	0.001	0.005	ND
Carbofuran	0.001	0.005	ND	Mevinphos	0.001	0.005	ND
Chlorantranilprole	0.001	0.005	ND	Myclobutanil	0.001	0.005	ND
Chlorfenapyr	0.001	0.005	ND	Naled	0.001	0.005	ND
Chlorpyrifos	0.001	0.005	ND	Oxamyl	0.001	0.005	ND
Clofentezine	0.001	0.005	ND	Paclobutrazol	0.001	0.005	ND
Coumaphos	0.001	0.005	ND	Permethrin	0.001	0.005	ND
Daminozide	0.001	0.005	ND	Phosmet	0.001	0.005	ND
Diazinon	0.001	0.005	ND	Piperonyl Butoxide	0.001	0.005	ND
Dichlorvos	0.001	0.005	ND	Propiconazole	0.001	0.005	ND
Dimethoate	0.001	0.005	ND	Propoxur	0.001	0.005	ND
Dimethomorph	0.001	0.005	ND	Pyridaben	0.001	0.005	ND
Ethoprophos	0.001	0.005	ND	Spinetoram	0.001	0.005	ND
Etofenprox	0.001	0.005	ND	Spinosad	0.001	0.005	ND
Etoxazole	0.001	0.005	ND	Spiromesifen	0.001	0.005	ND
Fenhexamid	0.001	0.005	ND	Spirotetramat	0.001	0.005	ND
Fenoxycarb	0.001	0.005	ND	Spiroxamine	0.001	0.005	ND
Fenpyroximate	0.001	0.005	ND	Tebuconazole	0.001	0.005	ND
Fipronil	0.001	0.005	ND	Thiacloprid	0.001	0.005	ND
Fludioxonil	0.001	0.005	ND	Thiamethoxam	0.001	0.005	ND
Hexythiazox	0.001	0.005	ND	Trifloxystrobin	0.001	0.005	ND


 Date Tested: 04/06/2021
 LOD = Limit of Detection
 LOQ = Limit of Quantitation
 ND = None Detected



 Wes Rogers
 Principal Scientist
 04/06/2021

This product or substance has been tested by KCA Laboratories using validated testing methodologies and a quality system. Values reported relate only to the product or substance tested. KCA Laboratories makes no claims as to the efficacy, safety or other risks associated with any detected or non-detected amounts of any substances reported herein. This Certificate of Analysis shall not be reproduced except in full, without the written approval of KCA Laboratories.

CBC
Microbials by qPCR
Analyte

 Aerobic Bacteria
 Shiga toxin-producing E. Coli
 Enterobacteriaceae
 Salmonella

Complete
Result

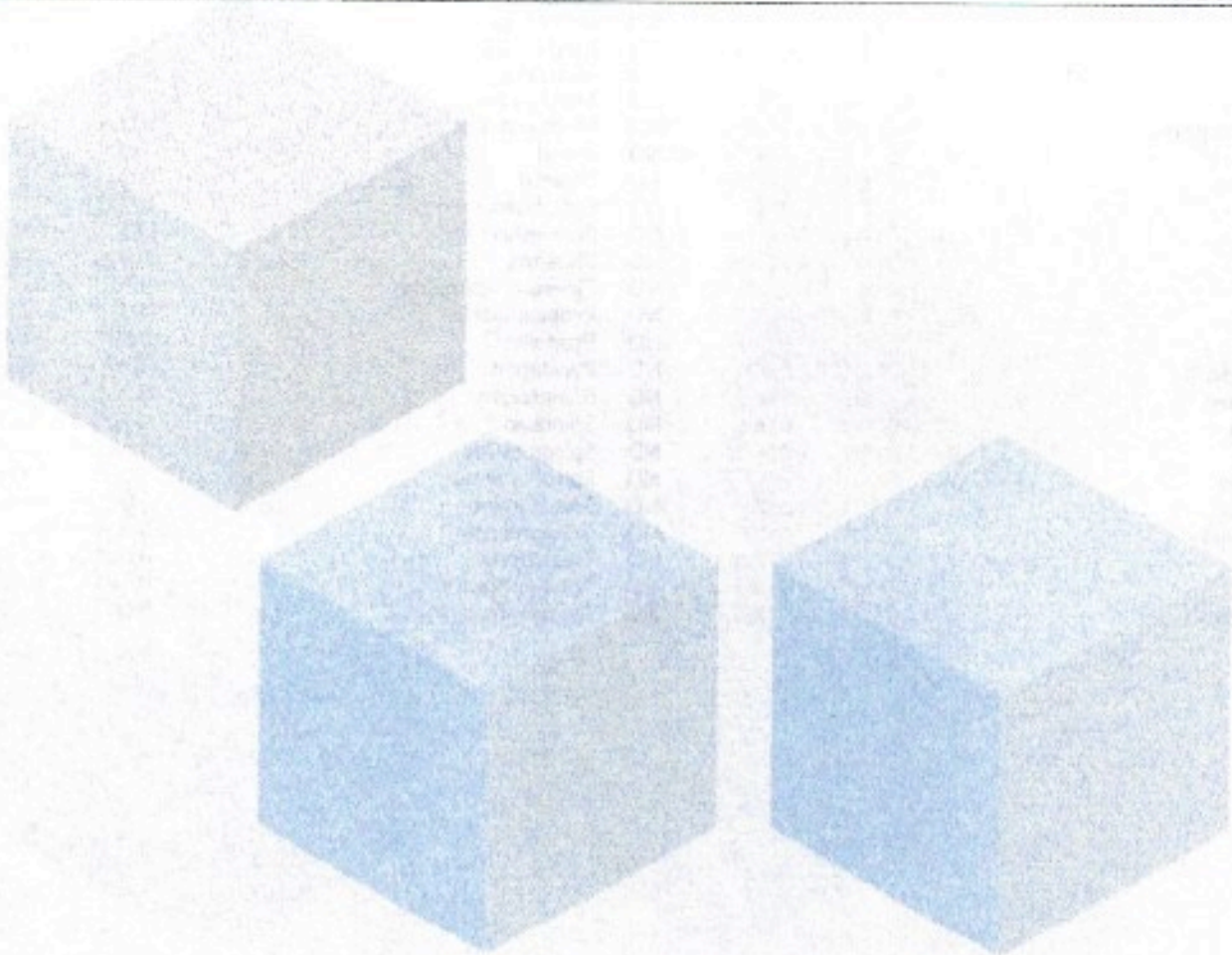
CFU/g

Not Detected in 1g

Not Detected in 1g

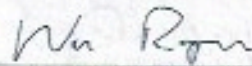
Not Detected in 1g

Not Detected in 1g



Date Tested: 04/05/2021

TNTC - Too Numerous to Count; Unless otherwise stated all quality control samples performed within specifications established by the Laboratory.

 Wes Rogers
 Principal Scientist
 04/06/2021

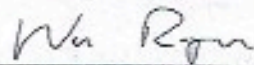
This product or substance has been tested by KCA Laboratories using validated testing methodologies and a quality system. Values reported relate only to the product or substance tested. KCA Laboratories makes no claims as to the efficacy, safety or other risks associated with any detected or non-detected amounts of any substances reported herein. This Certificate of Analysis shall not be reproduced except in full, without the written approval of KCA Laboratories.

CBC
Mycotoxins by LCMS/MS

Complete

Analyte	LOD	LOQ	Units
	PPB	PPB	PPB
B1	1	5	ND
B2	1	5	ND
G1	1	5	ND
G2	1	5	ND
Ochratoxin A	1	5	ND

Date Tested: 04/06/2021
 LOD = Limit of Detection
 LOQ = Limit of Quantitation
 ND = None Detected

Wes Rogers
 Principal Scientist
 04/06/2021

This product or substance has been tested by KCA Laboratories using validated testing methodologies and a quality system. Values reported relate only to the product or substance tested. KCA Laboratories makes no claims as to the efficacy, safety or other risks associated with any detected or non-detected amounts of any substances reported herein. This Certificate of Analysis shall not be reproduced except in full, without the written approval of KCA Laboratories.

CBC

6 of 6

Residual Solvents by HS-GC/MS

Analyte	LOD	LOQ	Mass	Analyte	LOD	LOQ	Mass
	PPM	PPM	PPM		PPM	PPM	PPM
Acetone	0.5	1	ND	Heptane	0.5	1	ND
Acetonitrile	0.5	1	ND	Isobutane	0.5	1	ND
Benzene	0.5	1	ND	Isopropanol	0.5	1	ND
Butane	0.5	1	ND	Isopropyl-Acetate	0.5	1	ND
1-Butanol	0.5	1	ND	Methanol	0.5	1	ND
2-Butanol	0.5	1	ND	2-Methyl-Butane	0.5	1	ND
2-Butanone	0.5	1	ND	2-Methyl-Pentane	0.5	1	ND
Chloroform	0.5	1	ND	3-Methyl-Pentane	0.5	1	ND
Cumene	0.5	1	ND	Methylene-Chloride	0.5	1	ND
Cyclohexane	0.5	1	ND	N,N-Dimethyl-Acetamide	0.5	1	ND
1,2-Dichloro-Ethane	0.5	1	ND	N,N-Dimethyl-Formamide	0.5	1	ND
1,2-Dimethoxy-Ethane	0.5	1	ND	Neopentane	0.5	1	ND
2,2-Dimethyl-Butane	0.5	1	ND	1-Pentanol	0.5	1	ND
2,3-Dimethyl-Butane	0.5	1	ND	Propane	0.5	1	ND
Dimethyl sulfoxide	0.5	1	ND	1-Propanol	0.5	1	ND
1,4-Dioxane	0.5	1	ND	Pyridine	0.5	1	ND
Ethanol	0.5	1	ND	Sulfolane	0.5	1	ND
2-Ethoxy-Ethanol	0.5	1	ND	Tetrahydrofuran	0.5	1	ND
Ethyl-Acetate	0.5	1	ND	Toluene	0.5	1	ND
Ethyl-Benzene	0.5	1	ND	Trichloroethene	0.5	1	ND
Ethyl-Ether	0.5	1	ND	Xylenes	0.5	1	ND
Ethylene glycol	0.5	1	ND	n-Hexane	0.5	1	ND
Ethylene oxide	0.5	1	ND	n-Pentane	0.5	1	4.114

Complete

 Date Tested: 04/06/2021
 LOD = Limit of Detection
 LOQ = Limit of Quantitation
 ND = None Detected


 Wes Rogers
 Principal Scientist
 04/06/2021

This product or substance has been tested by KCA Laboratories using validated testing methodologies and a quality system. Values reported relate only to the product or substance tested. KCA Laboratories makes no claims as to the efficacy, safety or other risks associated with any detected or non-detected amounts of any substances reported herein. This Certificate of Analysis shall not be reproduced except in full, without the written approval of KCA Laboratories.