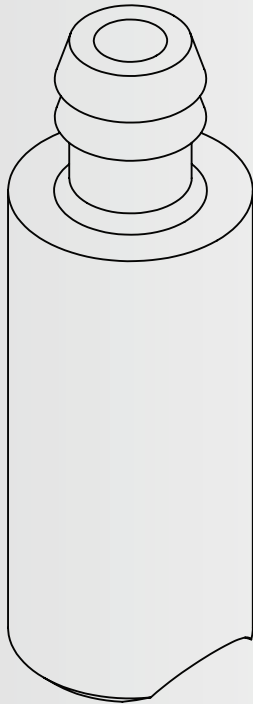




- Hose barb sizes range from 1/16" - 1/2"
- Available in PVDF and PTFE
- Sterile and non-sterile options
- Autoclavable and gamma-stable options
- Comply with USP Class VI standards



Foxx Life Science's **EZBio[®] Anchor** dip tube sinkers are the perfect way to keep dip tubes anchored at the bottom of a vessel. Tubing connects easily to the hose barb, while the recessed bottom of the Anchor ensures optimal depth and flow rate without risk of suction against the vessel.

These Anchors are constructed from either a solvent-resistant, autoclavable, USP Class VI PTFE or Gamma Stable Class VI PVDF. With hose barb sizes ranging from 1/16" ID to 1/2" ID, Foxx Life Sciences **EZBio[®] Anchor** has the versatility to match any of your design requirements.

- 1 Hose barb for attaching tubing
- 2 Anchor body diameter ranges from 0.75" - 1.00"
- 3 Recessed bottom prevents suction against container



SKU Number (1/EA)	SKU Number (5/PK)	SKU Number (25/PK)	Material	Sterilization	Hose Barb Size	Part Diameter
25S-1227-FLS	25S-1232-FLS	25S-1237-FLS	PVDF	Non-Sterile	1/16"	0.75"
25S-1228-FLS	25S-1233-FLS	25S-1238-FLS	PVDF	Non-Sterile	1/8"	0.75"
25S-1229-FLS	25S-1234-FLS	25S-1239-FLS	PVDF	Non-Sterile	1/4"	0.90"
25S-1230-FLS	25S-1235-FLS	25S-1240-FLS	PVDF	Non-Sterile	3/8"	1.00"
25S-1231-FLS	25S-1236-FLS	25S-1241-FLS	PVDF	Non-Sterile	1/2"	1.00"

SKU Number (1/EA)	SKU Number (5/PK)	SKU Number (25/PK)	Material	Sterilization	Hose Barb Size	Part Diameter
25S-1221-FLS	25S-1226-FLS	25S-1216-FLS	PVDF	Sterile	1/16"	0.75"
25S-1219-FLS	25S-1224-FLS	25S-1214-FLS	PVDF	Sterile	1/8"	0.75"
25S-1218-FLS	25S-1223-FLS	25S-1213-FLS	PVDF	Sterile	1/4"	0.90"
25S-1217-FLS	25S-1222-FLS	25S-1212-FLS	PVDF	Sterile	3/8"	1.00"
25S-1220-FLS	25S-1225-FLS	25S-1215-FLS	PVDF	Sterile	1/2"	1.00"

EZLabpure™ bioprocess tubing compatible with **EZBio® Anchors**, options below.

Fluoropolymer Tubing

TPE Tubing

Silicone Tubing

