

# SPRUCECRAFTCO

Modern cross stitch kits, patterns and subscription boxes

[www.sprucecraftco.com](http://www.sprucecraftco.com)

## Not Ever.



### Measurements

82 x 73 stitches

14 count: 14.9 x 13.2 cm / 5.9 x 5.2 inch

18 count: 11.6 x 10.3 cm / 4.6 x 4.1 inch

18 DMC colours (key attached)

© Elise Ross 2022

This pattern is for personal use only. Please do not resell or redistribute copies of this chart. You are welcome to sell any physical items made using this pattern with credit for the design attributed to [www.sprucecraftco.com](http://www.sprucecraftco.com) (excludes physical hardcopies of this pattern). Happy stitching!

Looking for cross stitch supplies? Check out our sister store Sew It All Australia for a huge range of beautiful aida, evenweaves, DMC threads and accessories.

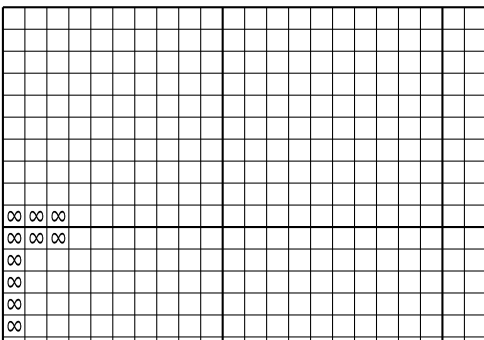
[www.sewitall.com.au](http://www.sewitall.com.au)



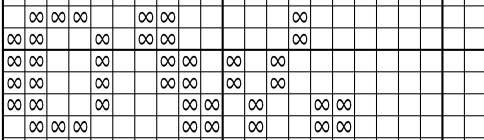
070

080

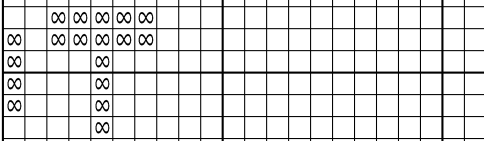
010



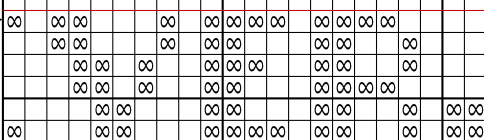
020



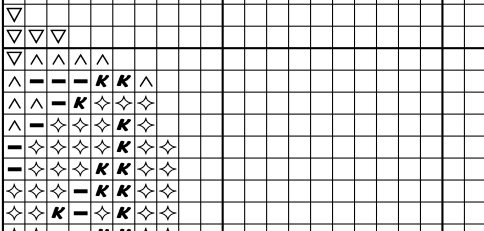
030



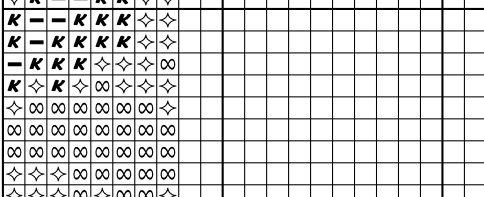
040



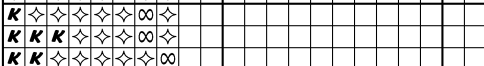
050



060



070



	Number	Name:	Strands	Length	Stitches
∞	DMC 3863	Mocha Beige medium	2	0.2 skeins	235
b	DMC 869	Hazel Nut Brown very	2	0.1 skeins	116
ε	DMC 372	Mustard light	2	0.1 skeins	33
⊞	DMC 3046	Yellow Beige medium	2	0.1 skeins	61
★	DMC 420	Hazel Nut Brown dark	2	0.1 skeins	164
n	DMC 920	Copper medium	2	0.1 skeins	81
✓	DMC 760	Salmon	2	0.1 skeins	78
♣	DMC 739	Tan ultra very light	2	0.1 skeins	124
♡	DMC 437	Tan light	2	0.1 skeins	121
i	DMC 300	Mahogany very dark	2	0.2 skeins	225
α	DMC 945	Tawny medium	2	0.1 skeins	142
Ⓒ	DMC 3371	Black Brown	2	0.2 skeins	299
✧	DMC 820	Royal Blue very dark	2	0.2 skeins	225
▽	DMC 807	Peacock Blue dark	2	0.2 skeins	276
—	DMC 798	Delft Blue dark	2	0.3 skeins	421
^	DMC 799	Delft Blue medium	2	0.2 skeins	276
K	DMC 825	Blue dark	2	0.1 skeins	160
∞	DMC 939	Navy Blue very dark	2	0.2 skeins	324

010

020

030

040

050

060

010

020

030

040

050

060

070



070

080

010

020

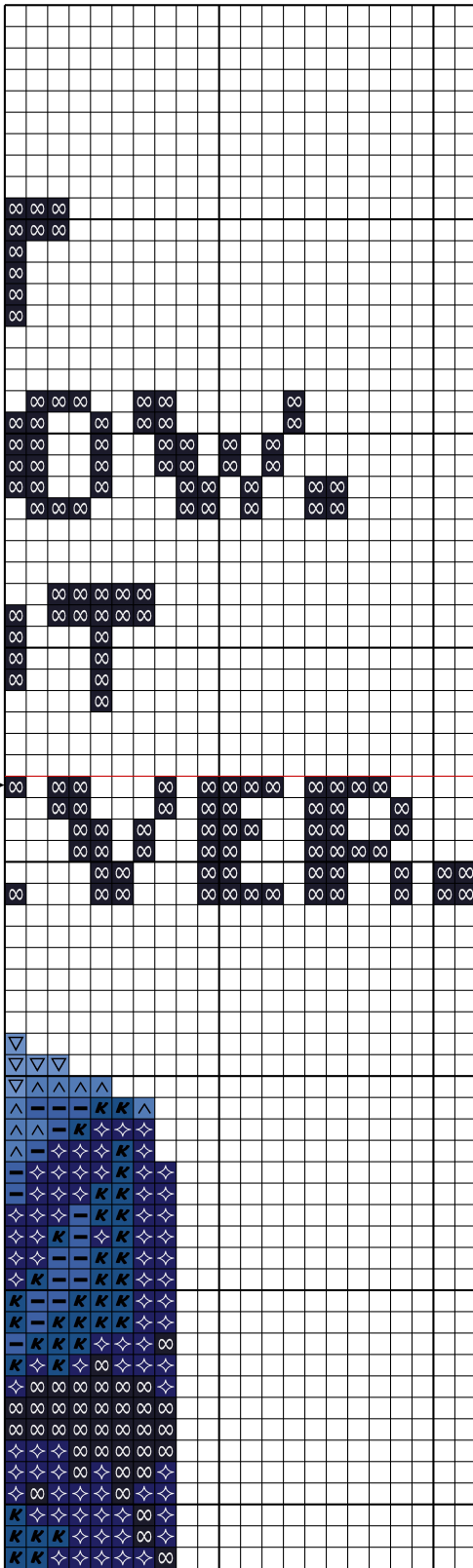
030

040

050

060

070



	Number	Name:	Strands	Length	Stitches
∞	DMC 3863	Mocha Beige medium	2	0.2 skeins	235
b	DMC 869	Hazel Nut Brown very	2	0.1 skeins	116
ε	DMC 372	Mustard light	2	0.1 skeins	33
↳	DMC 3046	Yellow Beige medium	2	0.1 skeins	61
★	DMC 420	Hazel Nut Brown dark	2	0.1 skeins	164
n	DMC 920	Copper medium	2	0.1 skeins	81
✓	DMC 760	Salmon	2	0.1 skeins	78
♣	DMC 739	Tan ultra very light	2	0.1 skeins	124
♡	DMC 437	Tan light	2	0.1 skeins	121
i	DMC 300	Mahogany very dark	2	0.2 skeins	225
α	DMC 945	Tawny medium	2	0.1 skeins	142
⌘	DMC 3371	Black Brown	2	0.2 skeins	299
✧	DMC 820	Royal Blue very dark	2	0.2 skeins	225
▽	DMC 807	Peacock Blue dark	2	0.2 skeins	276
—	DMC 798	Delft Blue dark	2	0.3 skeins	421
^	DMC 799	Delft Blue medium	2	0.2 skeins	276
K	DMC 825	Blue dark	2	0.1 skeins	160
∞	DMC 939	Navy Blue very dark	2	0.2 skeins	324

010

020

030

040

050

060

070

080

010

020

030

040

050

060

070

