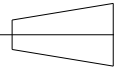




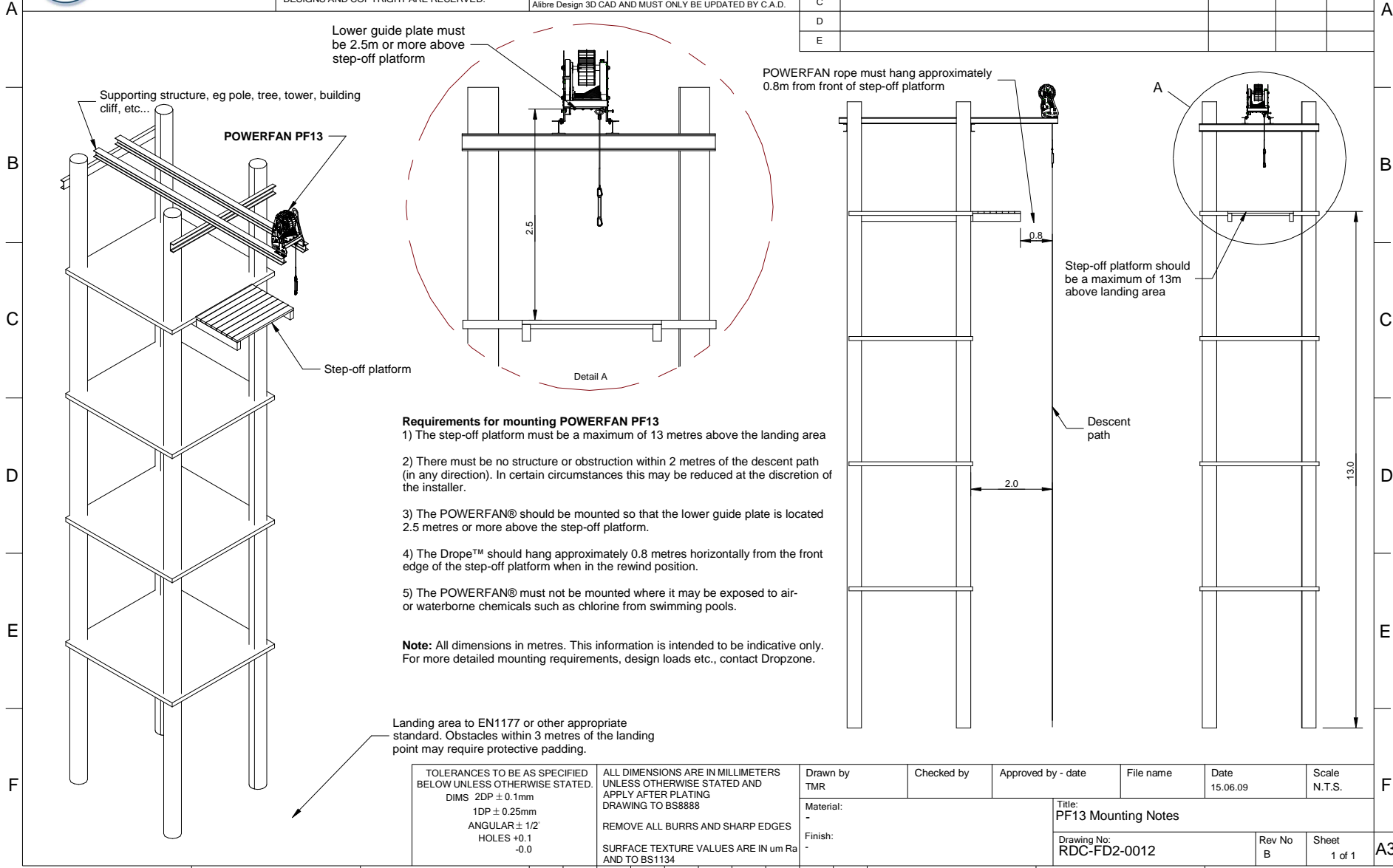
COPYRIGHT © 2008 DROPZONE (UK) LIMITED
THIS DRAWING IS CONFIDENTIAL. IT IS THE
PROPERTY OF DROPZONE (UK) LTD AND
MUST NOT BE REPRODUCED EITHER WHOLLY
OR PARTLY. ALL RIGHTS IN RESPECT OF PATENTS,
DESIGNS AND COPYRIGHT ARE RESERVED.



THIRD ANGLE
PROJECTION

THIS DOCUMENT HAS BEEN GENERATED USING
Alibre Design 3D CAD AND MUST ONLY BE UPDATED BY C.A.D.

Rev No	Revision note	Date	CRN No	Signature
A	Issued	23.06.07		FE
B	Notes on Mounting Requirements updated	15.06.09		TMR
C				
D				
E				



TOLERANCES TO BE AS SPECIFIED BELOW UNLESS OTHERWISE STATED.
DIMS 2DP ± 0.1mm
1DP ± 0.25mm
ANGULAR ± 1/2°
HOLES +0.1
-0.0

ALL DIMENSIONS ARE IN MILLIMETERS UNLESS OTHERWISE STATED AND APPLY AFTER PLATING DRAWING TO BS8888
REMOVE ALL BURRS AND SHARP EDGES
SURFACE TEXTURE VALUES ARE IN um Ra AND TO BS1134

Drawn by TMR	Checked by	Approved by - date	File name	Date 15.06.09	Scale N.T.S.
Material: -	Title: PF13 Mounting Notes			Rev No B	Sheet 1 of 1
Finish: -	Drawing No: RDC-FD2-0012				

A3