

GOONEY

Manual



Flying wing have always been special and attractive models. The GOONEY doesn't escape the rule. This is a flying wing with pleasant forms of 1,50m wingspan. Flying is fun and you find uourselm takin git to each output to the slope. Wonderful companion that will follow you easily with removable wings. Have fun !!!

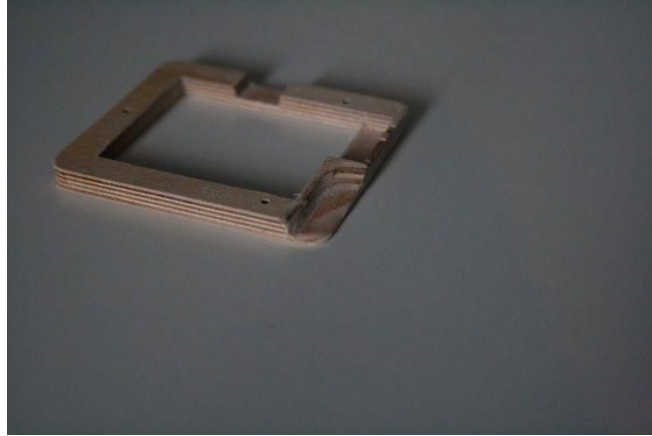
Before building

Mounting a flying wing is very quick and easy. However, the workspace must be clean and clear. Check the assembly of the different components. It may be that the wing joiner is too tight, It will free after a few flights. If it is too tight sand delicately.



On the wings, the job is to:

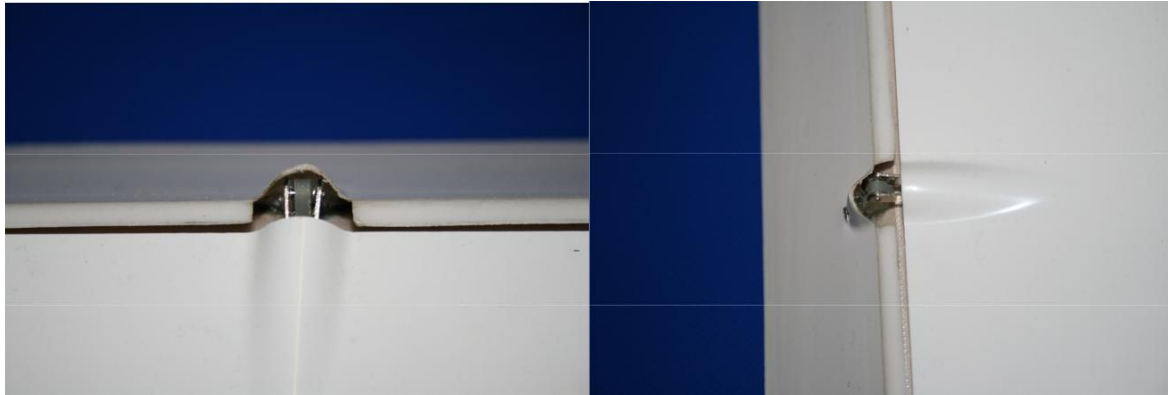
- Realize a groove to pass the rod on the servos supports provided in the kit.



- Glue the servos supports if you use slim wing servos, alternatively, use the appropriate support for your installation



- Glue the horns of aileron. Pierce delicately spar control surface to increase gluing.



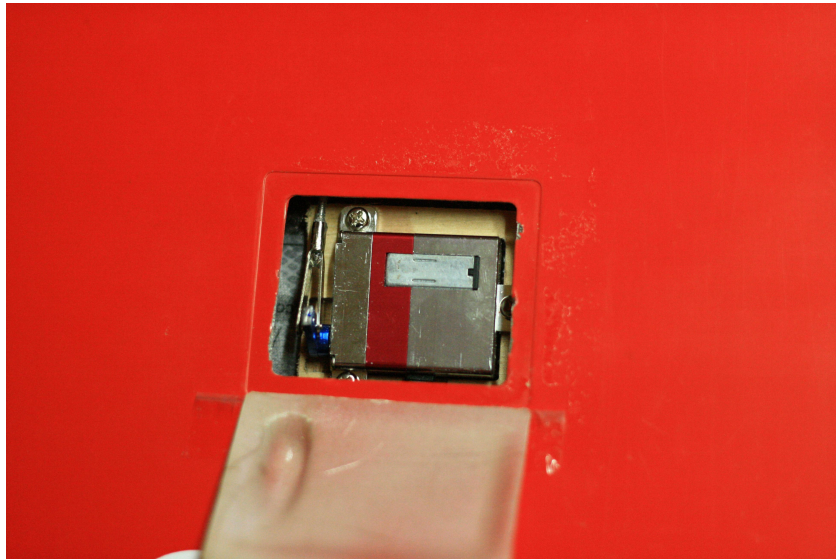
Take your time and do several dry installation.

Once near, if necessary, to the cyano pointed to test the amplitude control surfaces. Supports servos can be glued with epoxy 5min and the horns will be glued to the cyano or with a mixture of epoxy and silica.

-Pass the cables through the holes planned. (To facilitate this step can make use of a piano wire) then solder the plugs.



Before installing the servos, put in neutral for the aileron servo. You can now install the servos and connect the rods. Favor a mechanical adjustment.



To lock the rod or the operating clearance is too high, you can add a drop of cyano on the spreader and the horn.

Close the hatch servos with the cap provided. Here, 90% of the assembly is finished.

The wing is now complete !!!

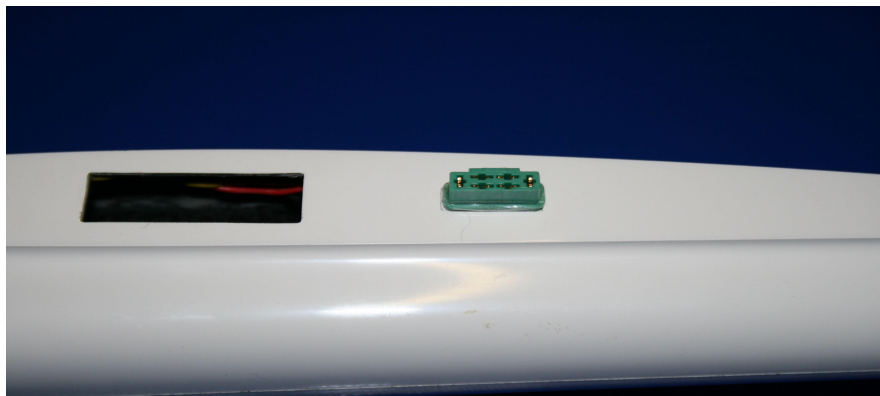
Go to the fuselage !!

As many RC model, it is necessary to add the centering lead. The gooney does not escape the rule. To save the place, we will be molded the plumb.

Take a latex glove, place it on the GOONEY nose. Fill a plastic cup with plaster and dip the GOONEY nose. Once dry, remove the fuselage.



Now you can install and stick the MPX connectors on the fuselage and wings. The easiest way is to just paste, the safest is to paste only one side.



The servos plate does not receive servos here but contributes to the strength of the fuselage. It is therefore necessary to paste.



Place your battery (here 2s lipo with BEC) and your receiver.



It's time to make adjustments for the first flight.

SETTING of the first flight.

The settings are a matter of taste. Here is a starting point for a first flight without worry.

Control surface movements and CG settings

C/G = **66-70 mm** from Leading Edge to start. Move back slowly in small increments to further improve control responses.

Control surface settings: All dimensions are measured at the root of the control surface.

	+10mm + /	-
Elevator:		10mm
Ailerons:	+16mm /	-13mm

CONGRATULATION !!! INSTALLATION IS NOW COMPLETE !

HAVE FUN !!!!

