

# ALI

## DLG GLIDER

### Instruction Manual



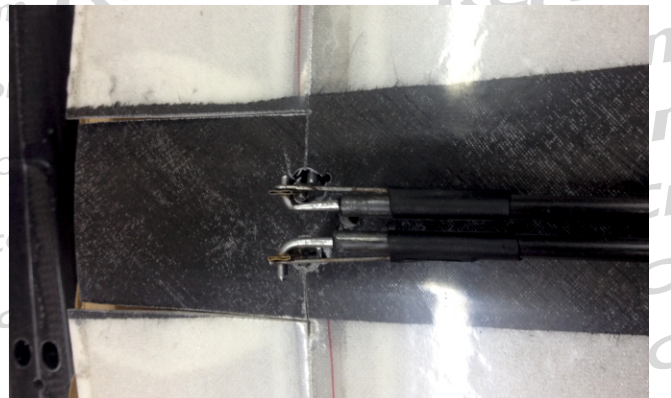
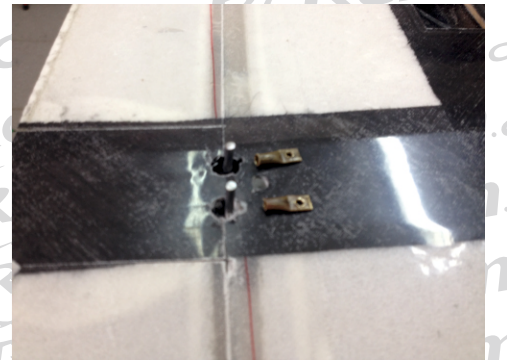
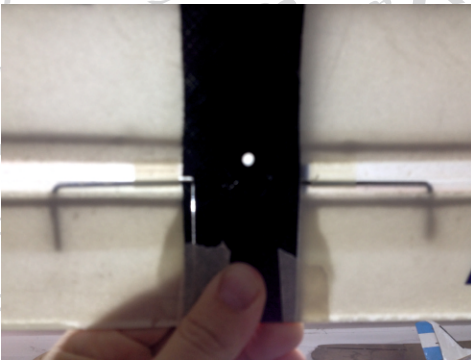
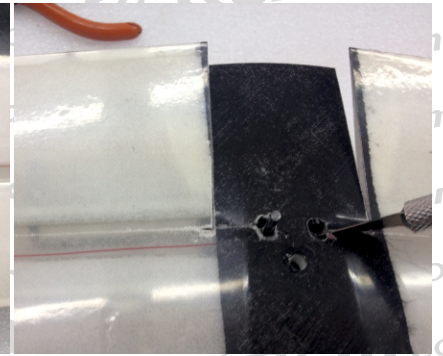
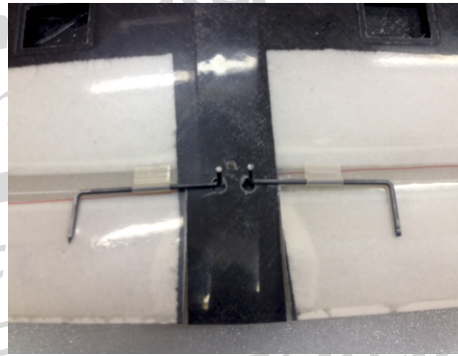
#### Unpacking

- Please unpack the plane carefully making sure that you have retrieved all of the small parts.
- Don't throw the box out until you are 100% sure it's empty!
- Check that all the parts are supplied.
- If any are missing please contact your vendor immediately.



## Wings

**TWO WAYS TO INSTALL THE AILERON SERVOS  
INTO THE FUSELAJE WITH PUSH ROD INSIDE  
USING INTERNAL CONTROL WING HORNS**



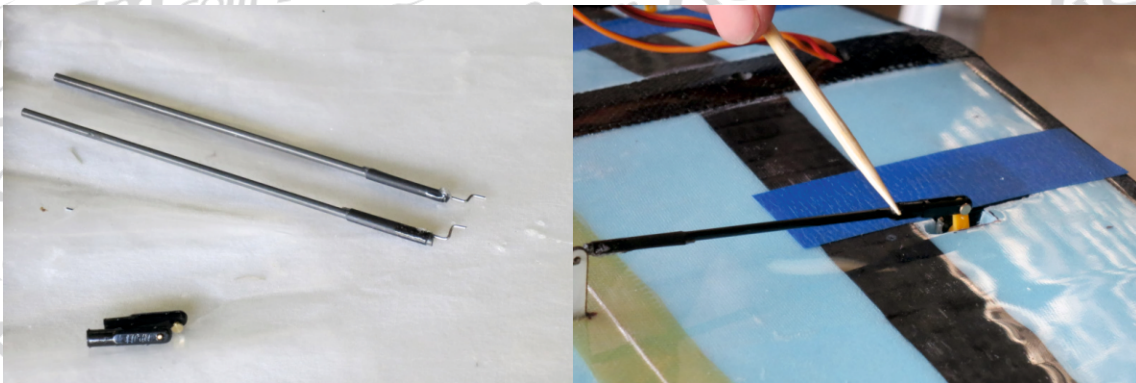
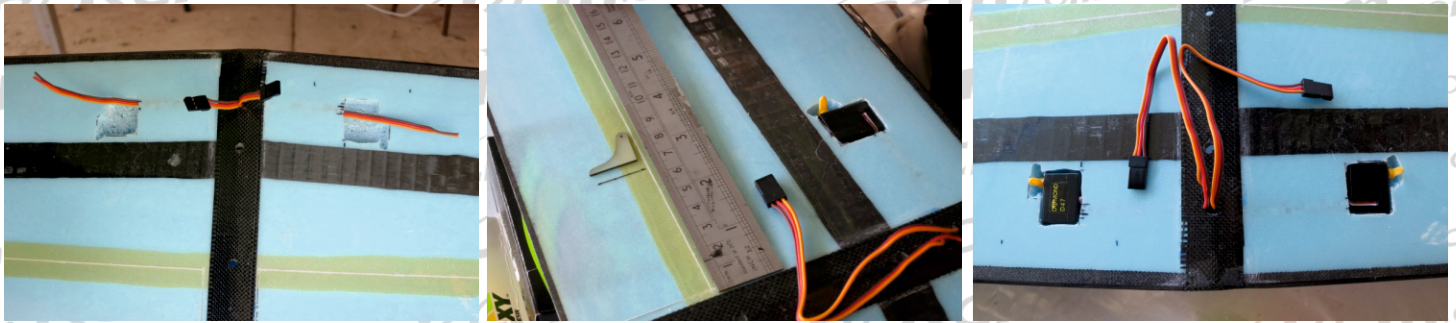
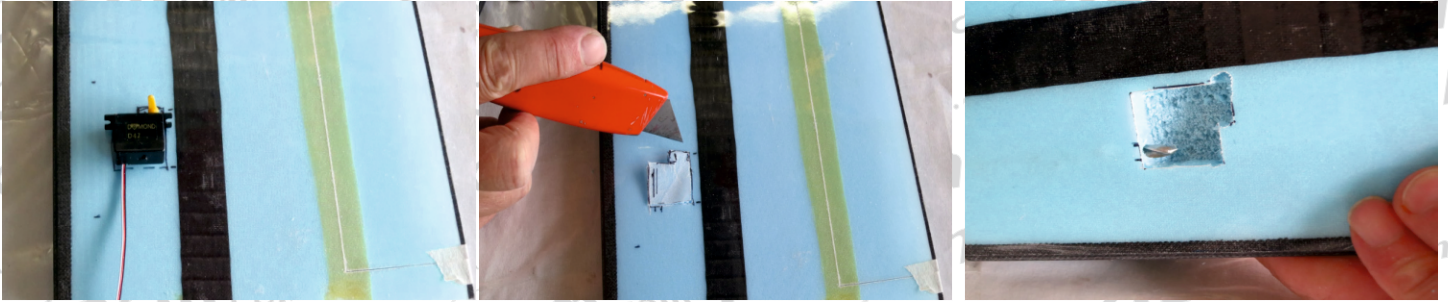
for the aileron control horns use  
iron rod like the picture show  
and bronze tube at the end.

make the pushrod using 3 mm carbon  
tube and iron rod



# Wings

## TRADITIONAL WAY INSTALLING THE SERVOS INSIDE THE WINGS

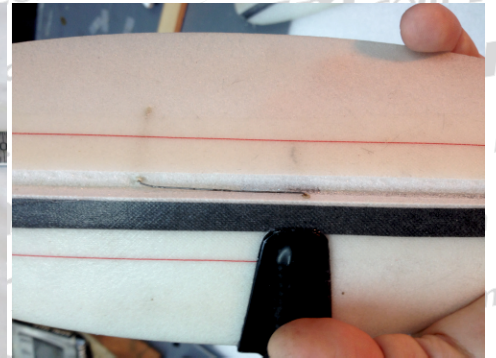
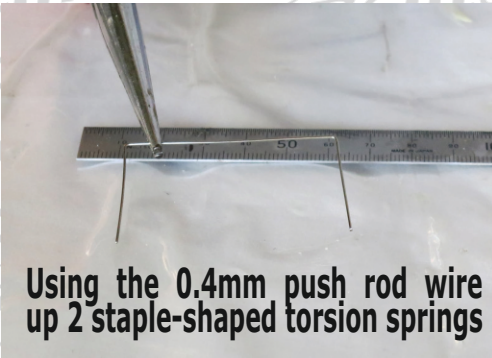


for the aileron control horns use iron rod like the picture show  
make the pushrod using 2 mm carbon tube and iron rod



# Tail

## ELEVATOR AND RUDDER



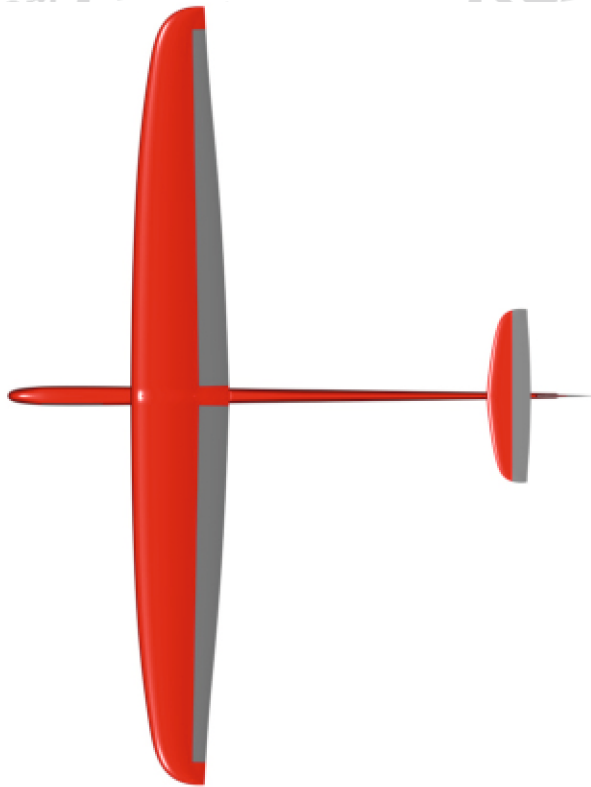
Using the 0.4mm push rod wire up 2 staple-shaped torsion springs

## CUT THE ELEVATOR AND RUDDER FLAPS AS SHOWN ON THE PHOTOS USING ONE SIDE LIKE HINGE



## CUT AND GLUE THE RUDDER SUPPORT AS SHOWN IN THE PHOTOS AND AFTER THAT, JOIN IT THE RUDDER AL FUSELAGE





**Specifications:**

**Wing span: 1492mm**

**Length: 1130mm**

**Wing aerofoil: RC series**

**Wing area: 22,9 dm<sup>2</sup>**

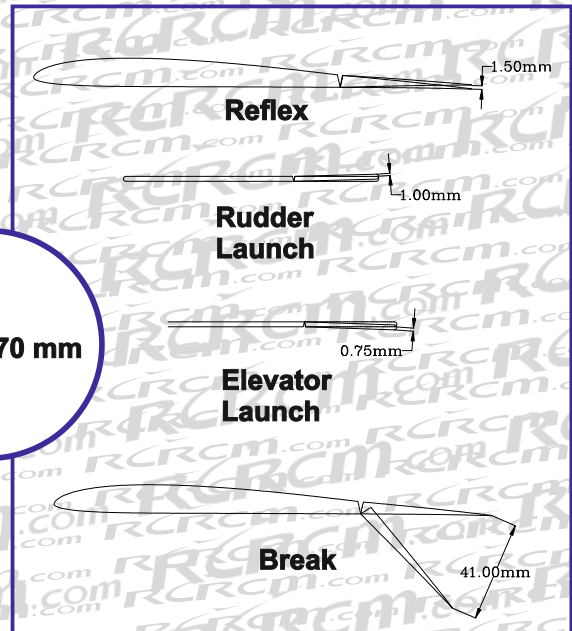
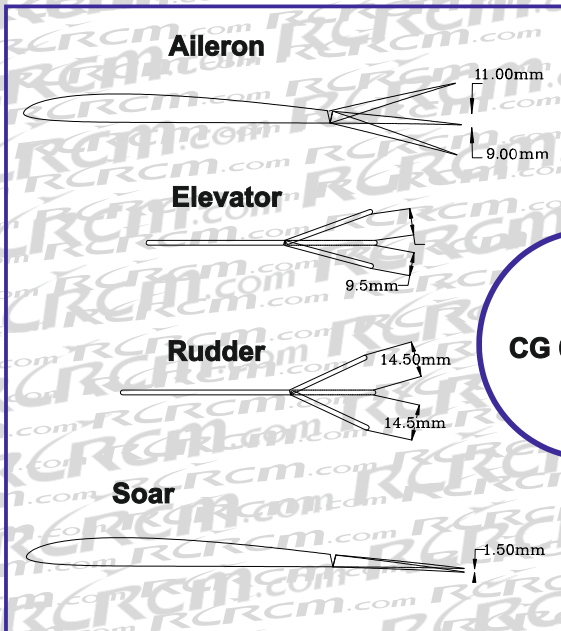
**Control surface: ailerons, elevator, rudder**

**Fly weight: 290-330g**

**ALI**  
DLG GLIDER

**Setting**

**Launch setting**



**CG 60-70 mm**