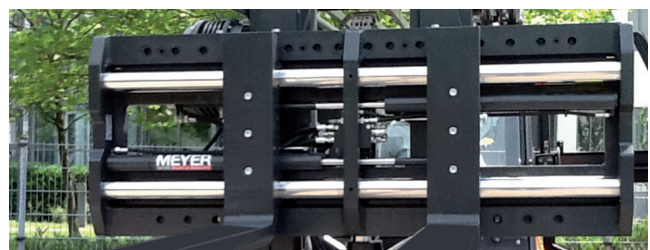
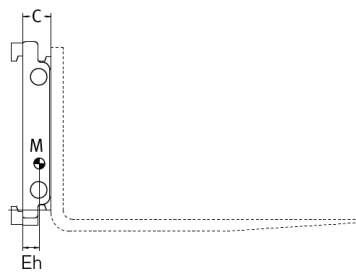
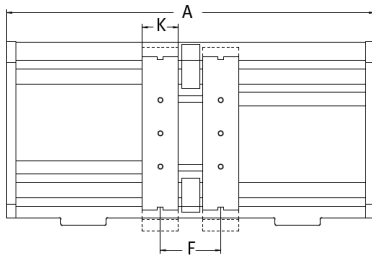


The MEYER high performance Fork Positioner can hydraulically adjust the forks from the driver's position. Its robust design provides excellent visibility and an optimum fork lift truck residual capacity. The Shaft Guide Concept with solid material hard-chromed shafts and long-life bushings ensures a clean working environment and fast operation speed with synchronal fork travel. The standard fork truck forks are utilized. Bolt-on forks can optionally be supplied.

The integral valve block sideshift of the type range 6-25 allows for an accurate load positioning within the chassis width, while the chassis stays fixed. Many special designs, also with telescopic forks, are available.





Range: 2500 kg - 10000 kg

Plus:

- Double shaft type fork positioner.
- Accurate fork positioning, thanks to the hydraulic adjustment of the forks within the width of the truck.
- For handling of palletised loads.
- Excellent visibility, strength and versatility.
- Integral side shift.
- Standard lift truck forks can be fitted, without any modification.

Modell	Capacity	Load Centre	Mounting Class	Chassis Width	Required Truck Carriage Width	Opening Range to Centre of Fork Arm Carrier	Fork Arm Width	Lost Load Centre	Horizontal Centre of Gravity	Weight	
											Q kg
a	6-2504G	2500	500	2	730	530	190-540	120	99	43	100
b	6-2504G	2500	500	2	880	680	190-690	120	99	43	113
c	6-2504G	2500	500	2	1000	800	190-810	120	99	43	123
d	6-2504G	2500	500	2	1050	850	190-860	120	99	42	128
e	6-2504G	2500	500	2	1100	900	190-910	120	99	42	132
f	6-2504G	2500	500	2	1150	950	190-960	120	99	42	136
g	6-2504G	2500	500	2	1200	1000	190-1010	120	101	42	157
h	6-2504G	2500	500	2	1250	1050	190-1060	120	101	42	161
i	6-2504G	2500	500	2	1300	1100	190-1110	120	101	42	165
j	6-2504G	2500	500	2	1400	1200	190-1210	120	101	41	173
k	6-2504G	2500	500	2	1500	1300	190-1310	120	101	41	181
a	6-2505G	2500	600	2	730	530	190-540	120	99	44	109
b	6-2505G	2500	600	2	880	680	190-690	120	99	44	122
c	6-2505G	2500	600	2	1000	800	190-810	120	99	44	132
d	6-2505G	2500	600	2	1050	850	190-860	120	99	43	137
e	6-2505G	2500	600	2	1100	900	190-910	120	99	43	141
f	6-2505G	2500	600	2	1150	950	190-960	120	99	43	145
g	6-2505G	2500	600	2	1200	1000	190-1010	120	101	43	166
h	6-2505G	2500	600	2	1250	1050	190-1060	120	101	43	170
i	6-2505G	2500	600	2	1300	1100	190-1110	120	101	43	174
j	6-2505G	2500	600	2	1400	1200	190-1210	120	101	42	182
k	6-2505G	2500	600	2	1500	1300	190-1310	120	101	42	191
a	6-2506G	3600	500	3	1100	900	190-910	120	107	46	148
b	6-2506G	3600	500	3	1150	950	190-960	120	107	46	152
c	6-2506G	3600	500	3	1200	1000	190-1010	120	110	45	180
d	6-2506G	3600	500	3	1250	1050	190-1060	120	110	45	184
e	6-2506G	3600	500	3	1300	1100	190-1110	120	110	44	188
f	6-2506G	3600	500	3	1350	1150	190-1160	120	110	44	192
g	6-2506G	3600	500	3	1450	1250	190-1260	120	110	44	200
h	6-2506G	3600	500	3	1550	1350	190-1360	120	110	43	208
i	6-2506G	3600	500	3	1700	1500	190-1510	120	110	43	220
a	6-2510G	5000	600	3	1250	1050	240-1010	150	114	52	218
b	6-2510G	5000	600	3	1300	1100	240-1060	150	114	52	223
c	6-2510G	5000	600	3	1350	1150	240-1110	150	114	52	228
d	6-2510G	5000	600	3	1400	1200	240-1160	150	128	56	251
e	6-2510G	5000	600	3	1450	1250	240-1210	150	128	56	257
f	6-2510G	5000	600	3	1500	1300	240-1260	150	128	55	263
g	6-2510G	5000	600	3	1600	1400	240-1360	150	128	55	275
h	6-2510G	5000	600	3	1700	1500	240-1460	150	128	55	286
i	6-2510G	5000	600	3	1800	1600	240-1560	150	128	55	297

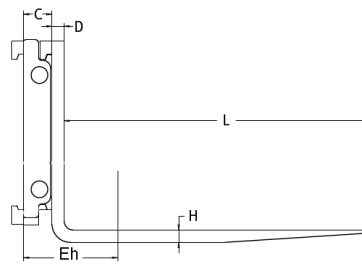
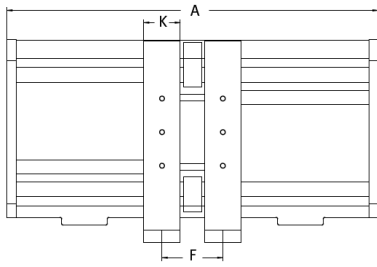
	Modell	Capacity	Load Centre	Mounting Class	Chassis Width	Required Truck Carriage Width	Opening Range to Centre of Fork Arm Carrier	Fork Arm Width	Lost Load Centre	Horizontal Centre of Gravity	Weight
		<i>Q</i> <i>kg</i>	<i>LSP</i> <i>mm</i>	<i>ISO</i> <i>Kl.</i>	<i>A</i> <i>mm</i>	<i>F</i> <i>mm</i>	<i>K</i> <i>mm</i>	<i>C</i> <i>mm</i>	<i>Eh</i> <i>mm</i>	<i>M</i> <i>kg</i>	
a	6-2512F	6000	600	4	1300	1135	230-1050	150	120	38	380
b	6-2512F	6000	600	4	1450	1135	230-1200	150	120	37	405
c	6-2512F	6000	600	4	1550	1135	230-1300	150	120	37	425
d	6-2512F	6000	600	4	1600	1370	230-1350	150	120	37	430
e	6-2512F	6000	600	4	1850	1610	230-1600	150	120	37	465
f	6-2512F	6000	600	4	2000	1610	230-1750	150	120	36	527
a	6-2516F	8000	600	4	1800	1620	280-1470	200	130	54	561
b	6-2516F	8000	600	4	2000	1620	280-1670	200	130	52	594
c	6-2516F	8000	600	4	2200	1860	280-1870	200	130	50	630
d	6-2516F	8000	600	4	2400	1860	280-2070	200	130	48	662
a	6-2518F	10000	600	4	1600	1380	280-1270	200	130	53	533
b	6-2518F	10000	600	4	1800	1620	280-1470	200	130	51	566
c	6-2518F	10000	600	4	2000	1620	280-1670	200	130	49	599
d	6-2518F	10000	600	4	2200	1860	280-1870	200	130	47	635
e	6-2518F	10000	600	4	2400	2100	280-2070	200	130	45	667
a	6-2520F	8000	900	4	2000	1620	280-1670	200	140	55	635
b	6-2520F	8000	900	4	2200	1860	280-1870	200	140	52	670
c	6-2520F	8000	900	4	2400	1860	280-2070	200	140	50	700
a	6-2525F	8000	1100	4	2100	1600	280-1780	200	145	54	800
b	6-2525F	8000	1100	4	2200	1600	280-1880	200	145	54	824
c	6-2525F	8000	1100	4	2300	1800	280-1980	200	145	53	849
d	6-2525F	8000	1100	4	2400	1800	280-2080	200	145	53	874

Notes:

- Two hydraulic functions required.
- The unit has an integral sideshift.
- ISO arm carriers are fitted with adjustable fork stops for variation in fork widths of up to "K" + 10 mm.
- It is recommended that extra wide forks should be bolted on.
- For use with standard forks (not included in price).
- Arm carriers are predrilled with 3 hole pattern.
- The unit is not suitable for clamping

Options:

- Special widths.
- Non-sideshifting models.
- Load backrest.
- Quick disconnect lower hooks.
- Special drill holes.
- Model with reach forks.
- Bolt-on forks.
- Integral mounting also available on request.



Range: 1600 kg - 10000 kg

Plus:

- Double shaft type fork positioner.
- Accurate fork positioning, thanks to the hydraulic adjustment of the forks within the width of the truck.
- For handling of palletised loads.
- Excellent visibility, strength and versatility.
- Integral side shift with bolt-on forks

	Modell	Capacity kg	Load Centre LSP mm	Mounting Class ISO KI.	Chassis Width A mm	Required Truck Carriage Width mm	Opening Range to Centre of Forks F mm	Fork Section K x H mm	Fork Length L mm	Fork Upright D mm	Lost Load Centre C mm	Horizontal Centre of Gravity Eh mm	Weight M kg
Additional price per 100 mm Fork length up to and including 1500 mm.													
Above 1500 mm to 2400 mm with fork section 120 x 40 mm.													
a	6-2503G-Z	1600	500	2A	730	530	190-540	100x40	1200	40	99	242	199
b	6-2503G-Z	1600	500	2A	880	680	190-690	100x40	1200	40	99	230	212
c	6-2503G-Z	1600	500	2A	1000	800	190-810	100x40	1200	40	99	221	222
d	6-2503G-Z	1600	500	2A	1050	850	190-860	100x40	1200	40	99	217	227
e	6-2503G-Z	1600	500	2A	1100	900	190-910	100x40	1200	40	99	214	231
f	6-2503G-Z	1600	500	2A	1150	950	190-960	100x40	1200	40	99	211	235
g	6-2503G-Z	1600	500	2A	1200	1000	190-1010	100x40	1200	40	101	198	256
h	6-2503G-Z	1600	500	2A	1250	1050	190-1060	100x40	1200	40	101	195	260
i	6-2503G-Z	1600	500	2A	1300	1100	190-1110	100x40	1200	40	101	193	264
j	6-2503G-Z	1600	500	2A	1400	1200	190-1210	100x40	1200	40	101	188	272
k	6-2503G-Z	1600	500	2A	1500	1300	190-1310	100x40	1200	40	101	184	280
Additional price per 100 mm Fork length up to and including 1500 mm.													
Above 1500 mm to 2400 mm with fork section 120 x 40 mm.													
a	6-2504G-Z	2500	500	2A	730	530	190-540	120x40	1200	40	99	265	226
b	6-2504G-Z	2500	500	2A	880	680	190-690	120x40	1200	40	99	253	239
c	6-2504G-Z	2500	500	2A	1000	800	190-810	120x40	1200	40	99	245	249
d	6-2504G-Z	2500	500	2A	1050	850	190-860	120x40	1200	40	99	240	254
e	6-2504G-Z	2500	500	2A	1100	900	190-910	120x40	1200	40	99	237	258
f	6-2504G-Z	2500	500	2A	1150	950	190-960	120x40	1200	40	99	234	262
g	6-2504G-Z	2500	500	2A	1200	1000	190-1010	120x40	1200	40	101	221	267
h	6-2504G-Z	2500	500	2A	1250	1050	190-1060	120x40	1200	40	101	218	271
i	6-2504G-Z	2500	500	2A	1300	1100	190-1110	120x40	1200	40	101	216	275
j	6-2504G-Z	2500	500	2A	1400	1200	190-1210	120x40	1200	40	101	211	283
k	6-2504G-Z	2500	500	2A	1500	1300	190-1310	120x40	1200	40	101	206	292
Additional price per 100 mm Fork length up to and including 1500 mm.													
Above 1500 mm to 2400 mm with fork section 120 x 50 mm.													
a	6-2505G-Z	2500	600	2A	730	530	190-540	120x45	1200	45	99	260	249
b	6-2505G-Z	2500	600	2A	880	680	190-690	120x45	1200	45	99	250	262
c	6-2505G-Z	2500	600	2A	1000	800	190-810	120x45	1200	45	99	242	272
d	6-2505G-Z	2500	600	2A	1050	850	190-860	120x45	1200	45	99	238	277
e	6-2505G-Z	2500	600	2A	1100	900	190-910	120x45	1200	45	99	235	281
f	6-2505G-Z	2500	600	2A	1150	950	190-960	120x45	1200	45	99	233	285
g	6-2505G-Z	2500	600	2A	1200	1000	190-1010	120x45	1200	45	101	221	306
h	6-2505G-Z	2500	600	2A	1250	1050	190-1060	120x45	1200	45	101	218	310
i	6-2505G-Z	2500	600	2A	1300	1100	190-1110	120x45	1200	45	101	216	314
j	6-2505G-Z	2500	600	2A	1400	1200	190-1210	120x45	1200	45	101	211	322
k	6-2505G-Z	2500	600	2A	1500	1300	190-1310	120x45	1200	45	101	207	331
Additional price per 100 mm Fork length up to and including 1500 mm.													
Above 1500 mm to 2400 mm with fork section 120 x 50 mm.													
a	6-2506G-Z	3600	500	3A	1100	900	190-910	120x45	1200	45	107	236	288
b	6-2506G-Z	3600	500	3A	1150	950	190-960	120x45	1200	45	107	233	292
c	6-2506G-Z	3600	500	3A	1200	1000	190-1010	120x45	1200	45	110	218	320
d	6-2506G-Z	3600	500	3A	1250	1050	190-1060	120x45	1200	45	110	215	324
e	6-2506G-Z	3600	500	3A	1300	1100	190-1110	120x45	1200	45	110	213	328
f	6-2506G-Z	3600	500	3A	1350	1150	190-1160	120x45	1200	45	110	211	332
g	6-2506G-Z	3600	500	3A	1450	1250	190-1260	120x45	1200	45	110	207	340
h	6-2506G-Z	3600	500	3A	1550	1350	190-1360	120x45	1200	45	110	203	348
i	6-2506G-Z	3600	500	3A	1700	1500	190-1510	120x45	1200	45	110	197	360

Additional price per 100 mm Fork length up to and including 1500 mm.

Above 1500 mm to 2400 mm with fork section 120 x 50 mm.

Modelli	Capacity	Load Centre	Mounting Class	Chassis Width	Required Truck Carriage Width	Opening Range to Centre of Forks	Fork Section	Fork Length	Fork Upright	Lost Load Centre	Horizontal Centre of Gravity	Weight	
	<i>Q</i> kg	<i>LSP</i> mm	<i>ISO</i> <i>Kl.</i>	<i>A</i> mm	<i>mm</i>	<i>F</i> mm	<i>K x H</i> mm	<i>L</i> mm	<i>D</i> mm	<i>C</i> mm	<i>Eh</i> mm	<i>M</i> kg	
a	6-2509G-Z	4500	600	3A	1250	1050	240-1010	140x50	1200	50	114	234	389
b	6-2509G-Z	4500	600	3A	1300	1100	240-1060	140X50	1200	50	114	232	394
c	6-2509G-Z	4500	600	3A	1350	1150	240-1110	140X50	1200	50	114	230	399
d	6-2509G-Z	4500	600	3A	1400	1200	240-1160	140x50	1200	50	128	229	422
e	6-2509G-Z	4500	600	3A	1450	1250	240-1210	140X50	1200	50	128	227	428
f	6-2509G-Z	4500	600	3A	1500	1300	240-1260	140X50	1200	50	128	224	434
g	6-2509G-Z	4500	600	3A	1600	1400	240-1360	140X50	1200	50	128	219	446
h	6-2509G-Z	4500	600	3A	1700	1500	240-1460	140x50	1200	50	128	215	457
i	6-2509G-Z	4500	600	3A	1800	1600	240-1560	140X50	1200	50	128	211	469
Additional price per 100 mm Fork length up to and including 1500 mm.													
Above 1500 mm to 2400 mm with fork section 150 x 50 mm.													
a	6-2510G-Z	5000	600	3A	1250	1050	240-1010	130x60	1200	60	114	240	418
b	6-2510G-Z	5000	600	3A	1300	1100	240-1060	130X60	1200	60	114	238	423
c	6-2510G-Z	5000	600	3A	1350	1150	240-1110	130X60	1200	60	114	236	428
d	6-2510G-Z	5000	600	3A	1400	1200	240-1160	130x60	1200	60	128	236	451
e	6-2510G-Z	5000	600	3A	1450	1250	240-1210	130X60	1200	60	128	234	457
f	6-2510G-Z	5000	600	3A	1500	1300	240-1260	130X60	1200	60	128	231	463
g	6-2510G-Z	5000	600	3A	1600	1400	240-1360	130X60	1200	60	128	226	475
h	6-2510G-Z	5000	600	3A	1700	1500	240-1460	130x60	1200	60	128	223	486
i	6-2510G-Z	5000	600	3A	1800	1600	240-1560	130X60	1200	60	128	219	497
Additional price per 100 mm Fork length up to and including 1500 mm.													
Above 1500 mm to 2400 mm with fork section 150 x 60 mm.													
a	6-2512F-Z	6000	600	4A	1300	1135	230-1050	130x60	1200	60	120	173	600
b	6-2512F-Z	6000	600	4A	1450	1135	230-1200	130x60	1200	60	120	172	625
c	6-2512F-Z	6000	600	4A	1550	1135	230-1300	130x60	1200	60	120	171	645
d	6-2512F-Z	6000	600	4A	1600	1370	230-1350	130x60	1200	60	120	171	650
e	6-2512F-Z	6000	600	4A	1850	1610	230-1600	130x60	1200	60	120	170	685
f	6-2512F-Z	6000	600	4A	2000	1610	230-1750	130x60	1200	60	120	145	747
g	6-2512F-Z	6000	600	4A	2200	1850	230-1950	130x60	1200	60	120	137	809
Additional price per 100 mm Fork length up to and including 1500 mm.													
Above 1500 mm to 2400 mm with fork section 150 x 60 mm.													
a	6-2516F-Z	8000	600	4A	1800	1400	280-1470	150x70	1200	70	130	188	858
b	6-2516F-Z	8000	600	4A	2000	1600	280-1670	150x70	1200	70	130	181	891
c	6-2516F-Z	8000	600	4A	2200	1800	280-1870	150x70	1200	70	130	175	927
d	6-2516F-Z	8000	600	4A	2400	1860	280-2070	150x70	1200	70	130	169	959
Additional price per 100 mm Fork length up to and including 2400 mm.													
Additional price change in fork section 200x60 mm one time													
a	6-2518F-Z	10000	600	4A	1600	1200	280-1270	200x70	1200	70	130	219	933
b	6-2518F-Z	10000	600	4A	1800	1400	280-1470	200x70	1200	70	130	212	966
c	6-2518F-Z	10000	600	4A	2000	1600	280-1670	200x70	1200	70	130	206	999
d	6-2518F-Z	10000	600	4A	2200	1800	280-1870	200x70	1200	70	130	199	1035
e	6-2518F-Z	10000	600	4A	2400	1860	280-2070	200x70	1200	70	130	193	1067
Additional price per 100 mm Fork length up to and including 2400 mm.													
a	6-2520F-Z	8000	900	4A	2000	1620	280-1670	200x70	1200	70	140	212	1035
b	6-2520F-Z	8000	900	4A	2200	1860	280-1870	200x70	1200	70	140	205	1071
c	6-2520F-Z	8000	900	4A	2400	1860	280-2070	200x70	1200	70	140	199	1103
Additional price per 100 mm Fork length up to and including bis 2400 mm.													
a	6-2525F-Z	8000	1100	4A	2100	1600	280-1780	200x80	1200	80	145	202	1252
b	6-2525F-Z	8000	1100	4A	2200	1600	280-1880	200x80	1200	80	145	199	1276
c	6-2525F-Z	8000	1100	4A	2300	1800	280-1980	200x80	1200	80	145	196	1301
d	6-2525F-Z	8000	1100	4A	2400	1800	280-2080	200x80	1200	80	145	193	1326
Additional price per 100 mm Fork length up to and including 2400 mm.													

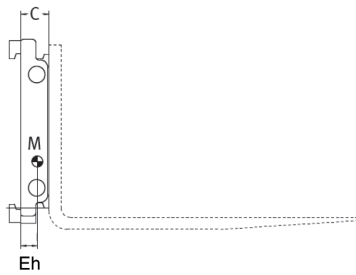
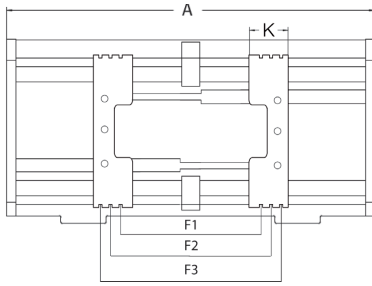
Notes:

- Two hydraulic functions required.
- The unit has an integral sideshift.
- Forks are attached to arm carriers and secured with 3 bolts.

Options:

- Special widths.
- Different fork lengths.
- Load backrest.
- Quick disconnect lower hooks.
- Forks secured with 4 bolts
- Special drill holes.
- Integral mounting also available on request.

Model 6-25 A (integral Sideshift)



Range: 2500 kg - 5000 kg

Plus:

- The special Automotive Execution of the MEYER shaft-guided Fork Positioner is designed around the particular demand of the logistic processes in the automotive industry.
- With integral (valve block) sideshift.

Modell	Capacity	Load Centre	Mounting Class	Chassis Width	Required Truck Carriage Width	Opening Range to Centre of Fork Arm Carrier			Fork Arm Width	Lost Load Centre	Horizontal Centre of Gravity	Weight	
						F1	F2	F3					
	Q kg	LSP mm	ISO Kl.	A mm	mm	mm	mm	mm	mm	mm	mm	kg	
a	6-2504A	2.500	500	2	730	530	150-500	250-600	350-700	220	119	48	109
b	6-2504A	2.500	500	2	880	680	150-650	250-750	350-850	220	119	48	122
c	6-2504A	2.500	500	2	1000	800	150-770	250-870	350-970	220	119	48	132
d	6-2504A	2.500	500	2	1050	850	150-820	250-920	350-1020	220	119	47	137
e	6-2504A	2.500	500	2	1100	900	150-870	250-970	350-1070	220	119	47	141
f	6-2504A	2.500	500	2	1150	950	150-920	250-1020	350-1120	220	119	47	145
g	6-2504A	2.500	500	2	1200	1000	150-970	250-1070	350-1170	220	121	47	163
h	6-2504A	2.500	500	2	1250	1050	150-1020	250-1120	350-1220	220	121	47	170
i	6-2504A	2.500	500	2	1300	1100	150-1070	250-1170	350-1270	220	121	47	174
j	6-2504A	2.500	500	2	1400	1200	150-1170	250-1270	350-1370	220	121	46	182
k	6-2504A	2.500	500	2	1500	1300	150-1270	250-1370	350-1470	220	121	46	190
a	6-2505A	2.500	600	2	730	530	150-500	250-600	350-700	220	119	49	118
b	6-2505A	2.500	600	2	880	680	150-650	250-750	350-850	220	119	49	131
c	6-2505A	2.500	600	2	1000	800	150-770	250-870	350-970	220	119	49	141
d	6-2505A	2.500	600	2	1050	850	150-820	250-920	350-1020	220	119	48	146
e	6-2505A	2.500	600	2	1100	900	150-870	250-970	350-1070	220	119	48	150
f	6-2505A	2.500	600	2	1150	950	150-920	250-1020	350-1120	220	119	48	154
g	6-2505A	2.500	600	2	1200	1000	150-970	250-1070	350-1170	220	121	48	175
h	6-2505A	2.500	600	2	1250	1050	150-1020	250-1120	350-1220	220	121	48	179
i	6-2505A	2.500	600	2	1300	1100	150-1070	250-1170	350-1270	220	121	48	183
j	6-2505A	2.500	600	2	1400	1200	150-1170	250-1270	350-1370	220	121	47	191
k	6-2505A	2.500	600	2	1500	1300	150-1270	250-1370	350-1470	220	121	47	200
a	6-2506A	3.600	500	3	1100	900	150-870	250-970	350-1070	220	137	54	163
b	6-2506A	3.600	500	3	1150	950	150-920	250-1020	350-1120	220	137	54	167
c	6-2506A	3.600	500	3	1200	1000	150-970	250-1070	350-1170	220	140	64	195
d	6-2506A	3.600	500	3	1250	1050	150-1020	250-1120	350-1220	220	140	53	199
e	6-2506A	3.600	500	3	1300	1100	150-1070	250-1170	350-1270	220	140	64	203
f	6-2506A	3.600	500	3	1350	1150	150-1120	250-1220	350-1320	220	140	63	207
g	6-2506A	3.600	500	3	1450	1250	150-1220	250-1320	350-1420	220	140	63	215
h	6-2506A	3.600	500	3	1550	1350	150-1320	250-1420	350-1520	220	140	63	223
i	6-2506A	3.600	500	3	1700	1500	150-1470	250-1570	350-1670	220	140	63	235
a	6-2510A	5.000	600	3	1250	1050	180-950	250-1020	450-1220	285	144	61	237
b	6-2510A	5.000	600	3	1300	1100	180-1000	250-1070	450-1270	285	144	61	242
c	6-2510A	5.000	600	3	1350	1150	180-1050	250-1120	450-1320	285	144	61	247
d	6-2510A	5.000	600	3	1400	1200	180-1100	250-1170	450-1370	285	158	65	268
e	6-2510A	5.000	600	3	1450	1250	180-1150	250-1220	450-1420	285	158	65	274
f	6-2510A	5.000	600	3	1500	1300	180-1200	250-1270	450-1470	285	158	64	280
g	6-2510A	5.000	600	3	1600	1400	180-1300	250-1370	450-1570	285	158	64	293
h	6-2510A	5.000	600	3	1700	1500	180-1400	250-1470	450-1670	285	158	64	303
i	6-2510A	5.000	600	3	1800	1600	180-1500	250-1570	450-1770	285	158	64	314

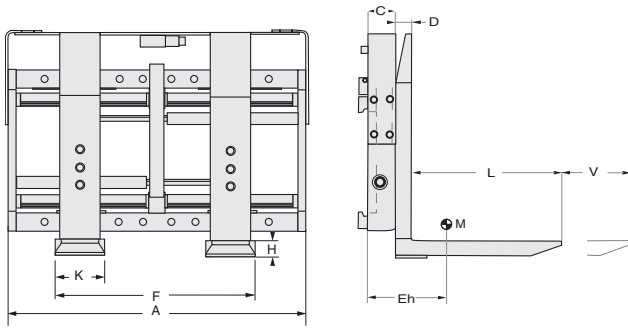
Notes:

- Additional hydraulics required
 > one
 > two if sideshift required
- ISO arm carriers are fitted with adjustable fork stops
- Maximum fork section in position
 F1 and F3:
 - 6-2504/05/06 130 mm
 - 6-2510 160 mm

- For use with standard forks (not included in price)
- Arm carriers are predrilled with 3 holes
- Hydraulic flow and operating pressure

Options:

- Other capacities and opening ranges
- Load Backrest
- Quick disconnect lower hooks - ISO II / III
- Special drill holes
- Valve protection (only for Model 6-2504/05)



Range: 2500 kg - 5800 kg

Plus:

- The combination of the proven MEYER fork positioner with quality telescopic forks enable the flexible handling and transport of different load dimensions as well as double deep stacking into racking and loading and unloading of road trucks from one side. The telescopic forks are mounted onto the precision shaft guide of the MEYER fork positioner.

	Modell	Capacity	Load Centre	Mounting Class	for FLT capacity max.	chassis width	opening range over forks	Fork Section	Fork Length	Stroke	Fork upright	Lost Load Centre	Centre of gravity retracted	Centre of gravity extended	Weight
		Q kg	LSP mm												
a	6-2504F-T	2500	500	2	2,5/500	1050	370-1010	170x56	1200	850	45	95	278	389	378
b	6-2504F-T	2500	500	2	2,5/500	1050	370-1010	170x56	1350	1000	45	95	327	462	398
c	6-2504F-T	2500	500	2	2,5/500	1150	370-1110	170x56	1200	850	45	95	271	380	388
d	6-2504F-T	2500	500	2	2,5/500	1150	370-1110	170x56	1350	1000	45	95	320	452	408
a	6-2506F-T	3500	500	3	3,5/500	1100	370-1060	170x56	1200	850	45	95	270	372	403
b	6-2506F-T	3500	500	3	3,5/500	1100	370-1060	170x56	1350	1000	45	95	313	444	423
c	6-2506F-T	3500	500	3	3,5/500	1300	370-1260	170x56	1200	850	45	95	253	348	433
d	6-2506F-T	3500	500	3	3,5/500	1300	370-1260	170x56	1350	1000	45	95	294	416	453
a	6-2508F-T	3500	600	3	4,0/500	1100	390-1040	170x56	1200	850	45	105	264	356	445
b	6-2508F-T	3500	600	3	4,0/500	1100	390-1040	170x56	1350	1000	45	105	304	423	465
c	6-2508F-T	3500	600	3	4,0/500	1350	390-1290	170x56	1200	850	45	105	250	336	475
d	6-2508F-T	3500	600	3	4,0/500	1350	390-1290	170x56	1350	1000	45	105	288	399	492
a	6-2509F-T	4500	600	3	4,5/600	1200	390-1140	170x56	1200	850	45	105	252	342	462
b	6-2509F-T	4500	600	3	4,5/600	1200	390-1140	170x56	1350	1000	45	105	292	407	472
c	6-2509F-T	4500	600	3	4,5/600	1350	390-1290	170x56	1200	850	45	105	244	331	480
d	6-2509F-T	4500	600	3	4,5/600	1350	390-1290	170x56	1350	1000	45	105	286	394	500
a	6-2510F-T	5000	600	3	5,0/500	1220	390-1140	170x62	1200	850	50	105	266	356	497
b	6-2510F-T	5000	600	3	5,0/500	1220	390-1140	170x62	1350	1000	50	105	306	421	492
c	6-2510F-T	5000	600	3	5,0/500	1370	390-1290	170x62	1200	850	50	105	258	345	525
d	6-2510F-T	5000	600	3	5,0/500	1370	390-1290	170x62	1350	1000	50	105	300	408	535
a	6-2512F-T	5800	600	4	6,0/600	1500	400-1420	170x62	1200	850	50	120	198	274	699
b	6-2512F-T	5800	600	4	6,0/600	1500	400-1420	170x62	1350	1000	50	120	230	324	719
c	6-2512F-T	5800	600	4	6,0/600	1800	400-1720	170x62	1200	850	50	120	185	255	760
d	6-2512F-T	5800	600	4	6,0/600	1800	400-1720	170x62	1350	1000	50	120	215	302	780

Notes:

- Additional hydraulics required
- > two for the use of fork positioning and telescopic forks
- Hydraulic flow and operating pressure

Options:

- Additional Cost for:
- Integral sideshift including solenoid valve
- Wear and tear protection
- Pallet stop Y1, height 75 mm
- Pallet stop Y2, height 400 mm
- Pallet stop Y3, height 850 mm
- Separate sideshift

MEYER GmbH

Gittertor 14

38259 Salzgitter

Germany

Tel. +49 5341 803-0

Fax +49 5341 803-196

www.meyer-world.com

Mühlenstr. 74

41352 Korschenbroich

Germany

Tel. +49 2161 999 36-0

Fax +49 2161 999 36-99

www.bolzonigroup.com



Lift Truck Attachments · Forks · Lift Tables