



**FORKLIFT ATTACHMENTS  
MATERIALS HANDLING  
OPERATOR TRAINING  
SERVICE & PARTS**

**0800 880 101**

**sales@rtequipment.co.nz**

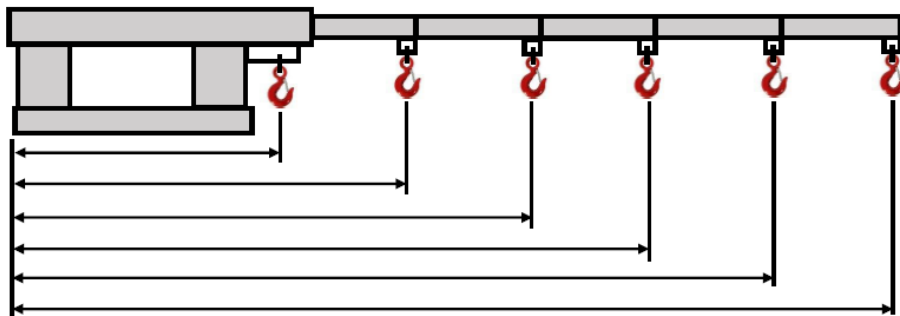
## **Long Tilt Jib 4500 kg FJA-19-458**

The 4500 kg long tilt jib is one of the most versatile forklift jib attachments in the range, allowing an extra height of up to 2.23 m, with a 3.53 m reach when fully extended. This slip-on attachment is held to the forklift by the safety chain and its overall length when closed is 2.10 m. This comes in a galvanised finish and includes a manual / certificate, safety chain and swivel hook.



### **Specifications:**

- Safe Working Load: 4500 kg.
- Pocket Size: 185 x 68 mm.
- Pocket Centres: 322 mm.
- Load Centre: 770 mm.
- Horizontal Centre of Gravity: 1080 mm.
- Vertical Centre of Gravity: 345 mm.
- Unit Weight: 190 kg.
- Manufactured strictly in accordance with AS 2359.1.



| Position       | 1    | 2    | 3    | 4    | 5    | 6    |
|----------------|------|------|------|------|------|------|
| Extension (mm) | 770  | 2010 | 2390 | 2770 | 3150 | 3530 |
| SWL (kg)       | 4500 | 1100 | 630  | 470  | 300  | 150  |