



**FORKLIFT ATTACHMENTS
MATERIALS HANDLING
OPERATOR TRAINING
SERVICE & PARTS**

0800 880 101

sales@rtequipment.co.nz

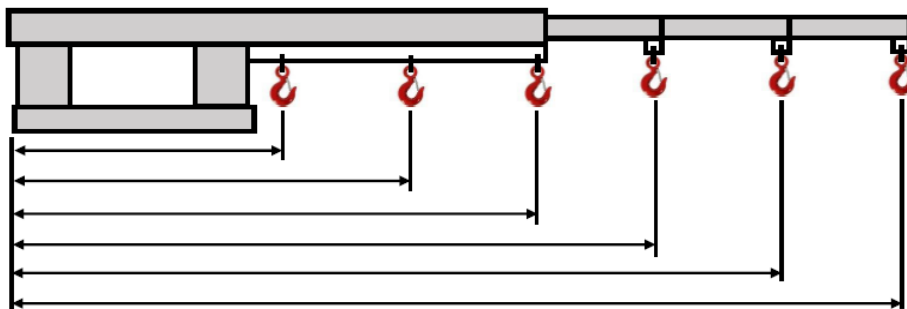
Compact Long Jib 4500 kg FJA-19-456

Versatile and very economical with a 3.5 m reach when fully extended, this jib is ideal for long loads to be carried. As the jib profile is low, your load can be lifted into tight spots near ceilings or under racking beams. This slip-on forklift attachment is held to the forklift with a safety chain. The jib's overall length, when closed, is 2.03 m and has 6 lifting points from 870 mm to 3465 mm. This comes in a galvanised finish and includes a manual / certificate, safety chain and swivel hook.



Specifications:

- Safe Working Load: 4500 kg.
- Pocket Size: 185 x 60 mm.
- Pocket Centres: 290 mm.
- Load Centre: 870 mm.
- Horizontal Centre of Gravity: 1295 mm.
- Vertical Centre of Gravity: 125 mm.
- Unit Weight: 140 kg.
- Manufactured strictly in accordance with AS 2359.1.



Position	1	2	3	4	5	6
Extension (mm)	950	1410	1870	2000	2380	2760
SWL (kg)	2500	2500	1900	1650	1250	650