



FORKLIFT ATTACHMENTS
MATERIALS HANDLING
OPERATOR TRAINING
SERVICE & PARTS

0800 880 101

sales@rtequipment.co.nz

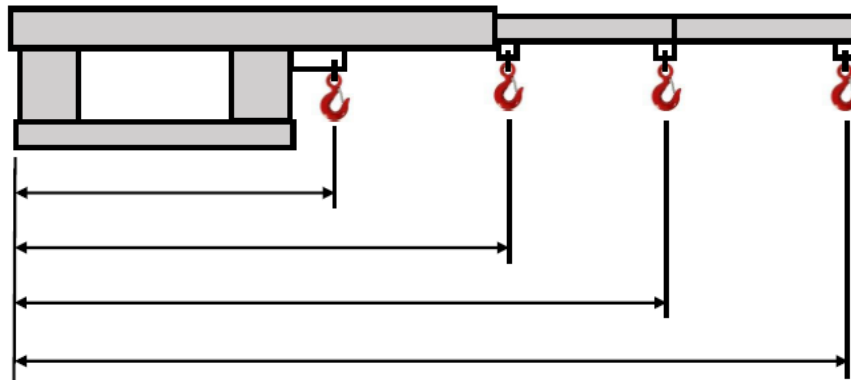
Compact Short Jib 4500 kg FJA-19-451

The 4500 kg compact short jib is designed to give increased lift height as the jib's profile is low. This is a general-purpose jib able to maneuver in confined spaces, with a 1.90 m reach when fully extended. The forks are inserted through the fork pockets and secured to the forklift with the safety chain. The jib's overall length when closed is 1.25 m. this comes in a galvanised finish and included a manual / certificate, safety chain and swivel hook.



Specifications:

- Safe Working Load: 4500 kg.
- Pocket Size: 185 x 65 mm.
- Pocket Centres: 290 mm.
- Load Centre: 670 mm.
- Horizontal Centre of Gravity: 735 mm.
- Vertical Centre of Gravity: 120 mm.
- Unit Weight: 950 kg.
- Manufactured strictly in accordance with AS 2359.1



Position	1	2	3	4
Extension (mm)	670	1165	1545	1925
SWL (kg)	4500	2900	1300	750