



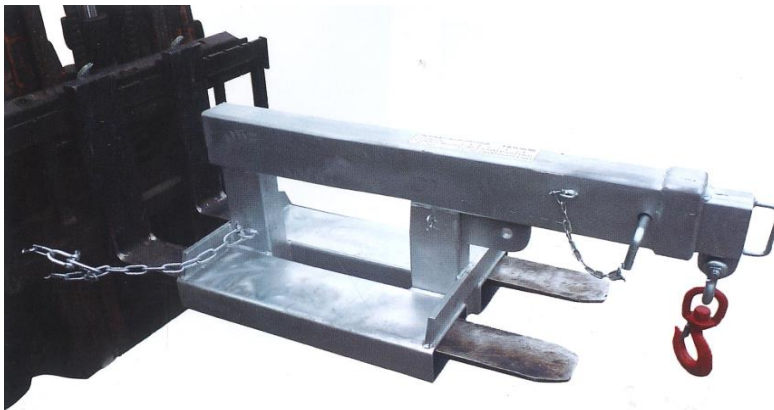
**FORKLIFT ATTACHMENTS
MATERIALS HANDLING
OPERATOR TRAINING
SERVICE & PARTS**

0800 880 101

sales@rtequipment.co.nz

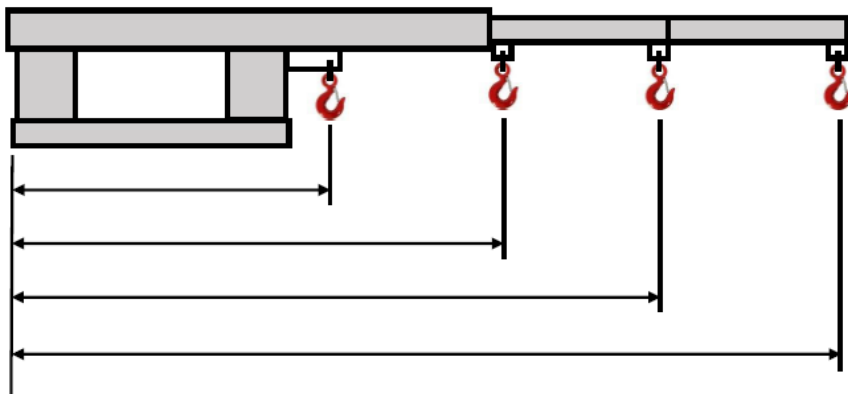
Short Jib 5000 kg FJA-19-502

This 5000 kg compact short jib has a 1.96 m reach when fully extended and an overall length of 1.30 m when retracted. This makes it ideal for maneuvering loads in confined spaces. The jib is secured to the forklift with the safety chain. This comes galvanised finish and includes a manual / certification, safety chain and swivel hook.



Specifications:

- Safe Working Load: 5000 kg.
- Pocket Size: 185 x 75 mm.
- Pocket Centres: 275 mm.
- Load Centre: 780 mm.
- Horizontal Centre of Gravity: 700 mm.
- Vertical Centre of Gravity: 165 mm.
- Unit Weight: 130 kg.
- Manufactured strictly in accordance with AS 2359.1



| Position | 1 | 2 | 3 | 4 |
|----------------|------|------|------|------|
| Extension (mm) | 780 | 1200 | 1580 | 1960 |
| SWL (kg) | 4750 | 2400 | 1800 | 1500 |