



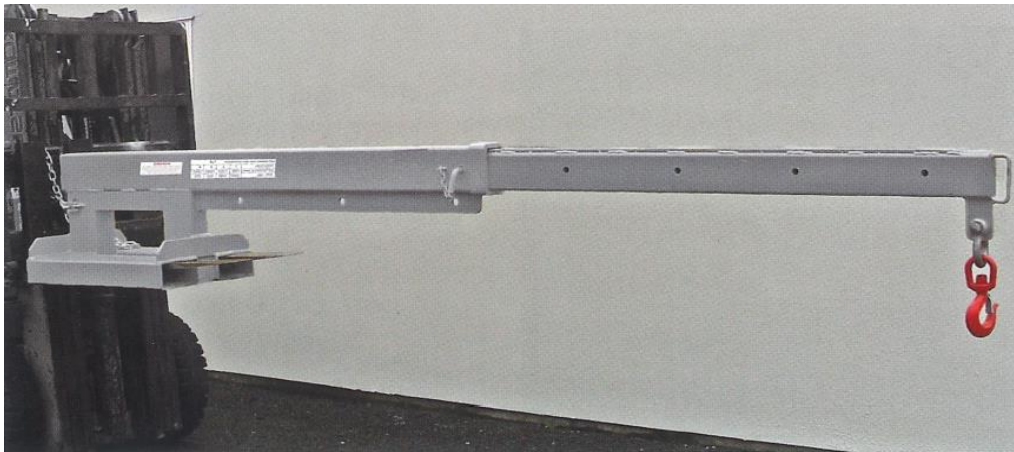
**FORKLIFT ATTACHMENTS  
MATERIALS HANDLING  
OPERATOR TRAINING  
SERVICE & PARTS**

**0800 880 101**

**sales@rtequipment.co.nz**

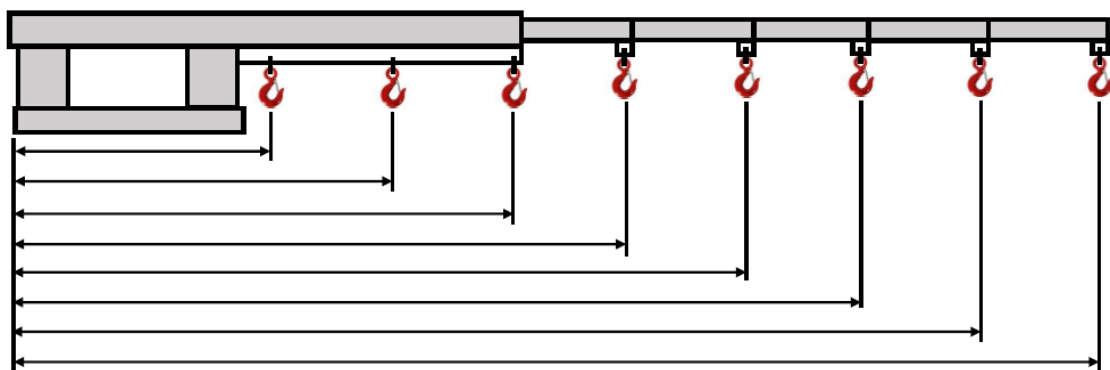
## **Long Jib 2500 kg FJA-19-257**

This jib is designed as an excellent and essential standby for handling the occasional long / awkward load with a 3.50 m reach when fully extended and closed length of 2.10 m. Simply slide the forks into the fork pockets then secure to the forklift carriage with the safety chain supplied. This comes in a galvanised finish and includes a manual / certificate, safety chain and swivel hook.



### **Specifications:**

- Safe Working Load: 2500 kg.
- Pocket Size: 135 x 60 mm.
- Pocket Centres: 275 mm.
- Load Centre: 950 mm.
- Horizontal Centre of Gravity: 1400 mm.
- Vertical Centre of Gravity: 50 mm.
- Unit Weight: 135 kg.
- Manufactured strictly in accordance with AS 2359.1.



Position	1	2	3	4	5	6	7	8
Extension (mm)	950	1410	1870	2000	2380	2760	3140	3520
SWL (kg)	2500	2500	1900	1650	1250	650	380	240