



**FORKLIFT ATTACHMENTS
MATERIALS HANDLING
OPERATOR TRAINING
SERVICE & PARTS**

0800 880 101

sales@rtequipment.co.nz

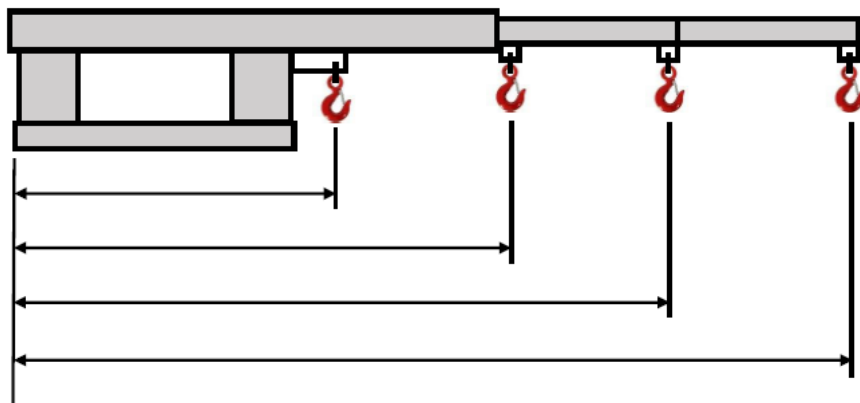
Tow Ball Jib 4500 kg FJA-19-710

This short tow ball jib attachment is designed to give increased lift height as the jib's profile is low. This is a general-purpose jib able to maneuver in confined spaces, with a 1.90 m reach when fully extended. Being fitted with a tow ball also enables you to easily move trailers around the yard. Simply drive your forks through the fork pockets and secure the safety chain to the carriage. This jib's overall length when closed is 1.25 m. This comes in a galvanised finish and includes a manual / certificate, safety chain and swivel hook.



Specifications:

- Safe Working Load of Hook: 4,500 kg.
- Safe Working Load of Tow Ball: 2000 kg.
- Pocket Size: 185 x 65 mm.
- Pocket Centres: 290 mm.
- Load Centre: 670 mm.
- Horizontal Centre of Gravity: 735 mm.
- Vertical Centre of Gravity: 120 mm.
- Unit Weight: 120 kg.
- Manufactured strictly in accordance with AS 2359.1.



Position	1	2	3	4
Extension (mm)	670	1165	1545	1925
SWL (kg)	4500	2900	1300	750