



**FORKLIFT ATTACHMENTS
MATERIALS HANDLING
OPERATOR TRAINING
SERVICE & PARTS**

0800 880 101

sales@rtequipment.co.nz

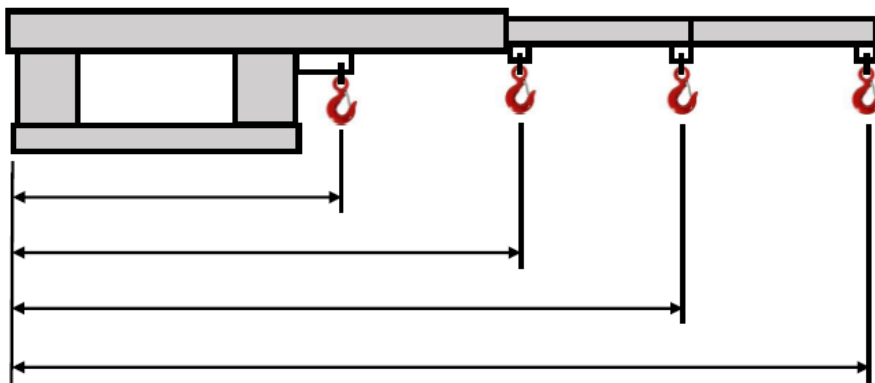
Short Jib 2500 kg FJA-19-252

The 2500 kg short jib is designed as an affordable general-purpose jib compact enough to be able to maneuver in confined spaces. This slip-on attachment is held to the forklift with a safety chain. The fully extended reach is 1.96 m and the closed length is 1.30 m. This comes in a galvanised finish and includes a manual / certificate, safety chain and swivel hook.



Specifications:

- Safe Working Load: 2500 kg.
- Pocket Size: 135 x 60 mm.
- Pocket Centres: 275 mm.
- Load Centre: 790 mm.
- Horizontal Centre of Gravity: 630 mm.
- Vertical Centre of Gravity: 135 mm.
- Unit Weight: 100 kg.
- Manufactured strictly in accordance with AS 2359.1.



Position	1	2	3	4
Extension (mm)	790	1200	1580	1960
SWL (kg)	2500	1200	900	750