



ADAPT-A-PANEL DASH MOUNT

INSTALL

GEN 3 RAPTOR (2021 - 2023)

Step 1:

Carefully remove the front trim around the radio.

The clips are stiff, and will pop off using a plastic pry tool.

Start at one edge and work your way around.





ADAPT-A-PANEL DASH MOUNT

INSTALL

GEN 3 RAPTOR (2021 - 2023)

Step 2:

Remove the rubber liner in the dash, this won't be reused.





ADAPT-A-PANEL DASH MOUNT

INSTALL

GEN 3 RAPTOR (2021 - 2023)

Step 3:

Remove the dash speaker cover, this is done by using the plastic pry tool to gently lift it, there are four clips holding it on.

They are stiff as well, but will come off with gentle and constant pressure.





ADAPT-A-PANEL DASH MOUNT

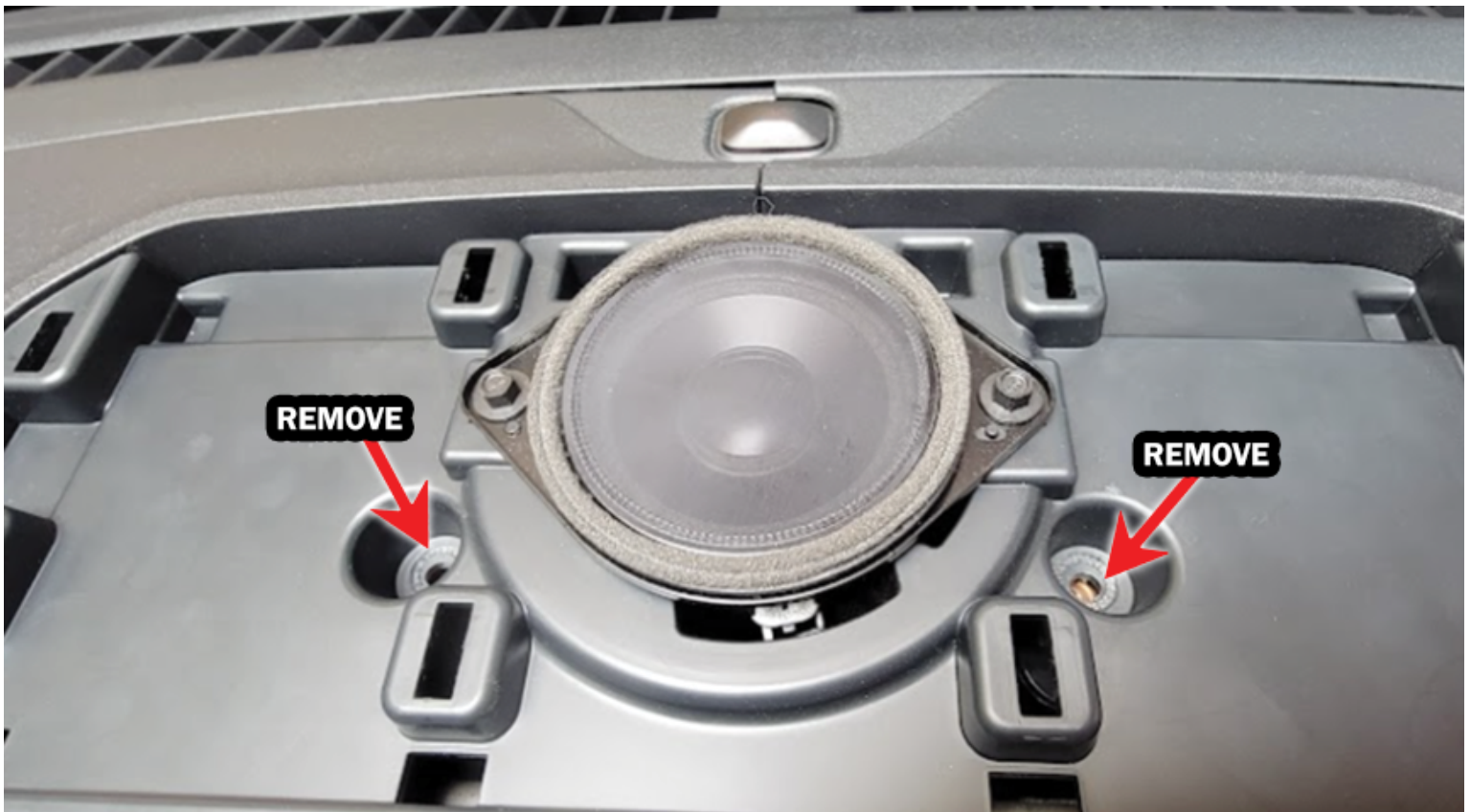
INSTALL

GEN 3 RAPTOR (2021 - 2023)

Step 4:

With the speaker cover removed, there are two 7mm bolts that need to be removed on either side of the speaker.

Save these for reinstallation.





ADAPT-A-PANEL DASH MOUNT

INSTALL

GEN 3 RAPTOR (2021 - 2023)

Step 5

With the plastic pry tool, carefully pull up the center dash piece, start at the front with the clips on top of the dash and work your way towards the windshield.

Once its loose, unplug the speaker and set aside





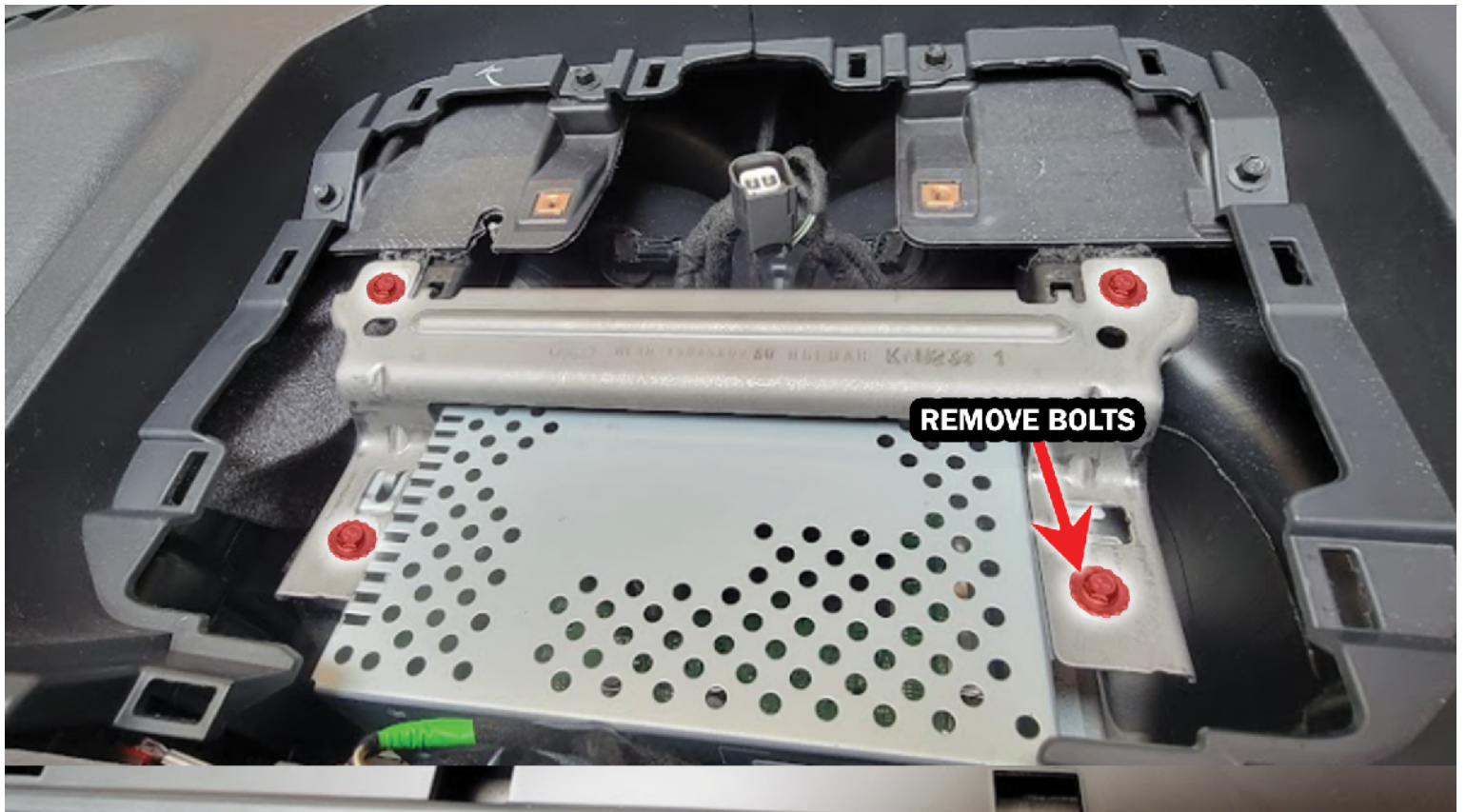
ADAPT-A-PANEL DASH MOUNT

INSTALL

GEN 3 RAPTOR (2021 - 2023)

Step 6:

Looking down into the top of the dash you will see 4 bolts, see picture. Remove all 4, two will be reused in a future step.





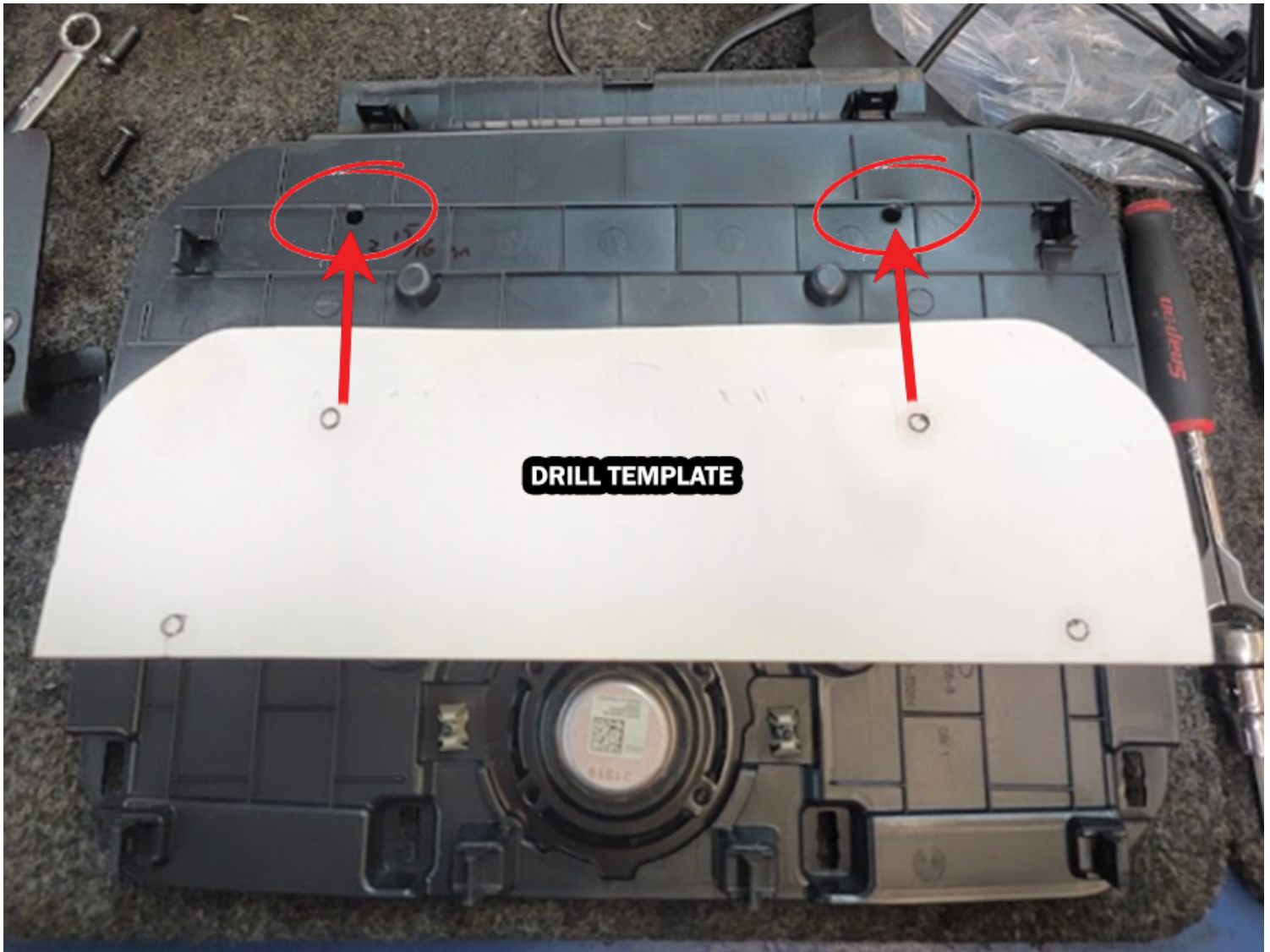
ADAPT-A-PANEL DASH MOUNT

INSTALL

GEN 3 RAPTOR (2021 - 2023)

Step 7:

Using the supplied drill template, orientate it onto the bottom of the dash piece removed in step 5 and drill your holes, we recommend drilling slightly larger than $\frac{1}{4}$ " as the plastic will shrink back a bit and can make it more difficult to install the bolts through in a future step.





ADAPT-A-PANEL DASH MOUNT

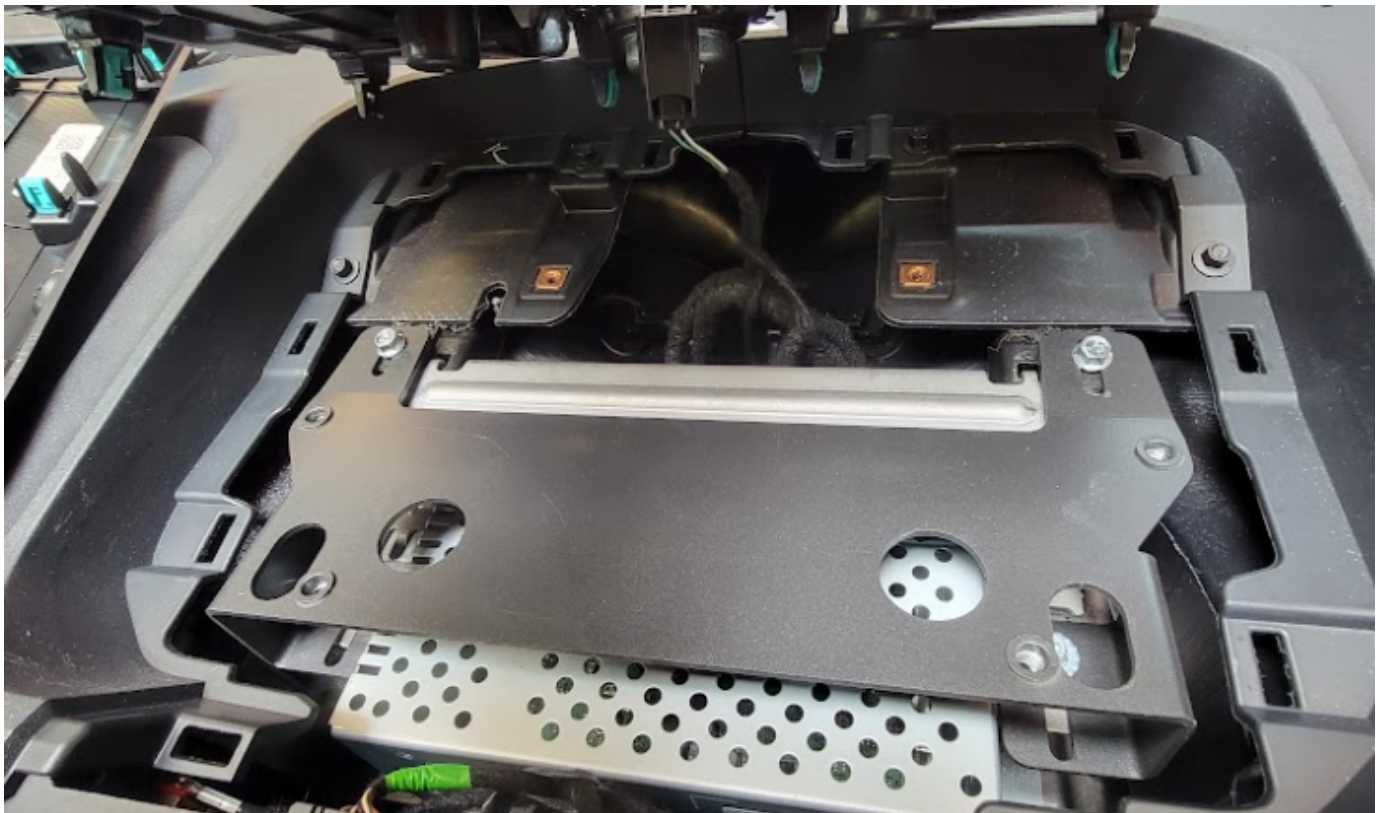
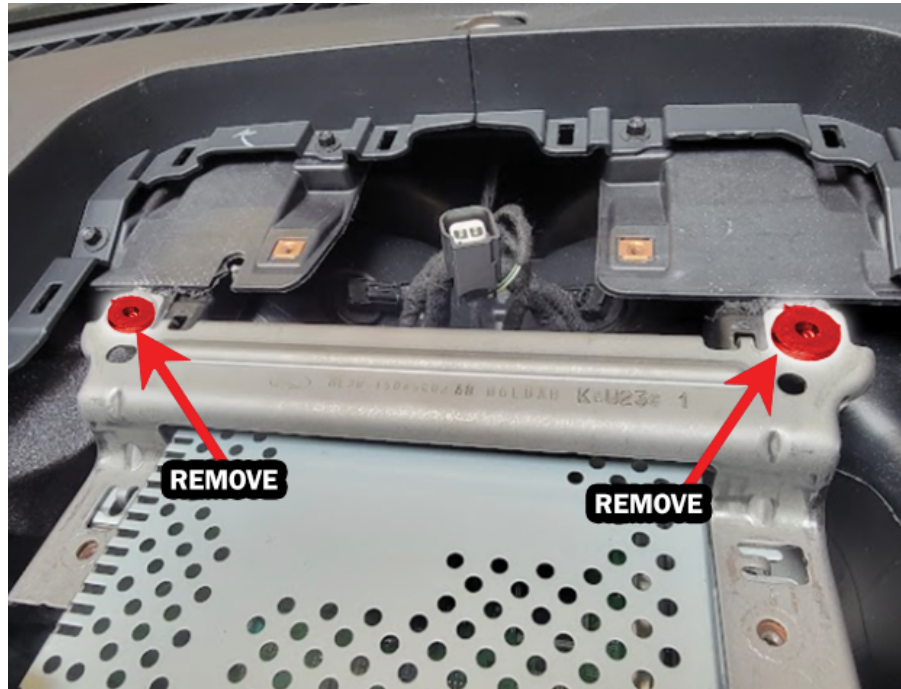
INSTALL

GEN 3 RAPTOR (2021 - 2023)

Step 8:

Install the base support bracket using the two saved bolts and the two supplied bolts and spacers.

The spacers go in the front toward the windshield. Tighten down at this time.





ADAPT-A-PANEL DASH MOUNT

INSTALL

GEN 3 RAPTOR (2021 - 2023)

Step 9:

Reinstall plastic dash piece from step 5, making sure to plug the speaker back in, and making sure that the holes drilled line up with the threaded inserts in the base support bracket.

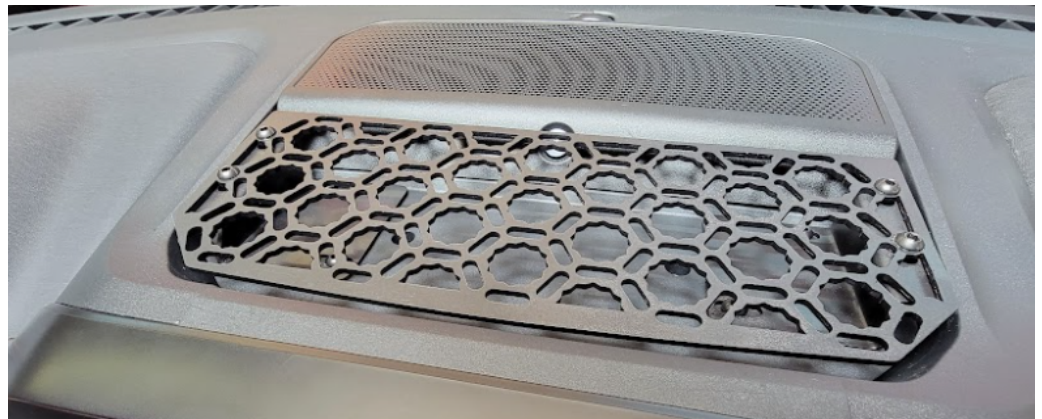
Secure all the plastic clips at this time.

Step 10:

Install snugly the 2 riser brackets that sets the height of the Adapt-A-Panel dash panel, then set the assembly into the dash lining up the holes in the riser brackets to the drilled holes.

Now center the dash panel.

Once the preferred position has been found, tighten the riser brackets to the dash panel, and final install the assembly into the dash.





ADAPT-A-PANEL DASH MOUNT

INSTALL

GEN 3 RAPTOR (2021 - 2023)

Step 11:

Reinstall the plastic trim piece around the radio.



Step 12:

Accessories can be mounted or with a threaded insert, sold separately.

The threaded insert is 1/4-20 thread and makes mounting accessories much easier and more versatile.

