



BILLET TIE ROD KIT (FULL)

INSTALL RAPTOR | BRONCO | BRONCO RAPTOR | RAM TRX

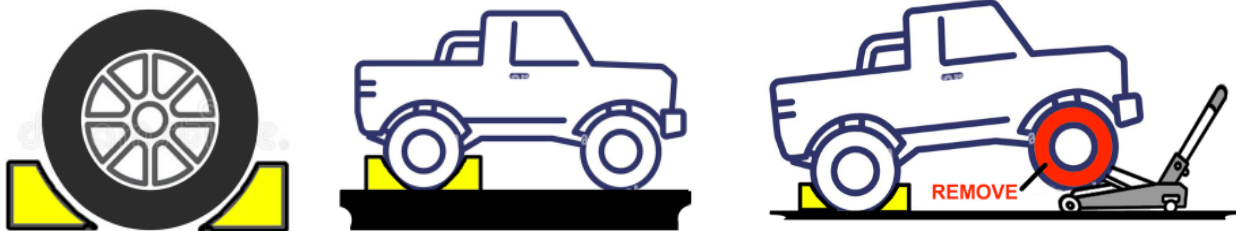
*** images shown are a Gen 3 Raptor, but instructions apply to all full tie rods***

Step 1:

Park vehicle on level ground and set the parking brake.



Place wheel chocks on the rear tires. Remove both front tires



Step 2:

To get your alignment close, with the steering wheel pointing straight forward, using a tape measure, measure across the brake rotors, then after the half tie rod is installed, this is the number you will want to set it back to.



BILLET TIE ROD KIT (FULL)

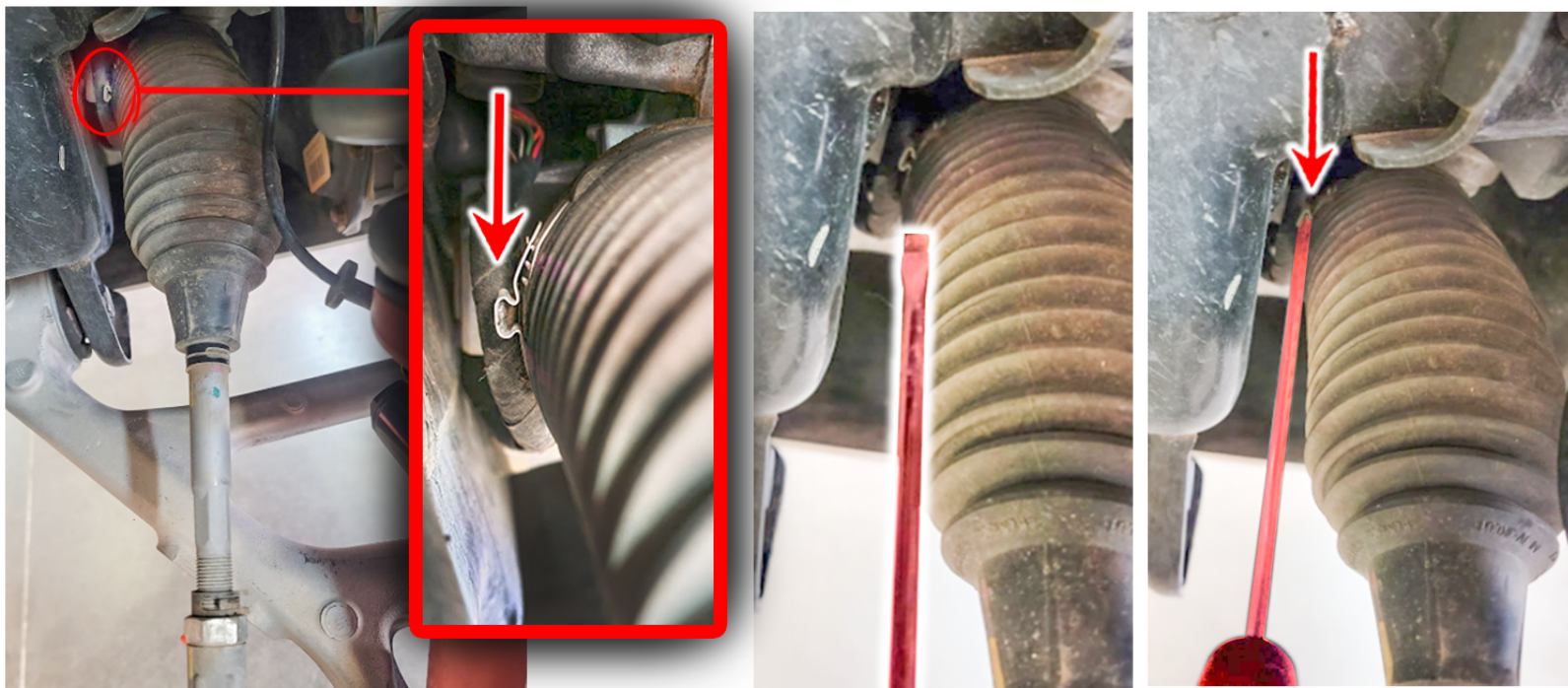
INSTALL RAPTOR | BRONCO | BRONCO RAPTOR | RAM TRX

Step 3:

Remove the spring clip off the outer tie rod boot and the clamp off the inner part of the boot, then pull the tie rod boot down towards the outer tierod.

The clamp on the inner part of the boot can be carefully removed with a long screw driver and can be reused.

See pictures for screwdriver placement and how to unbend them for reuse.



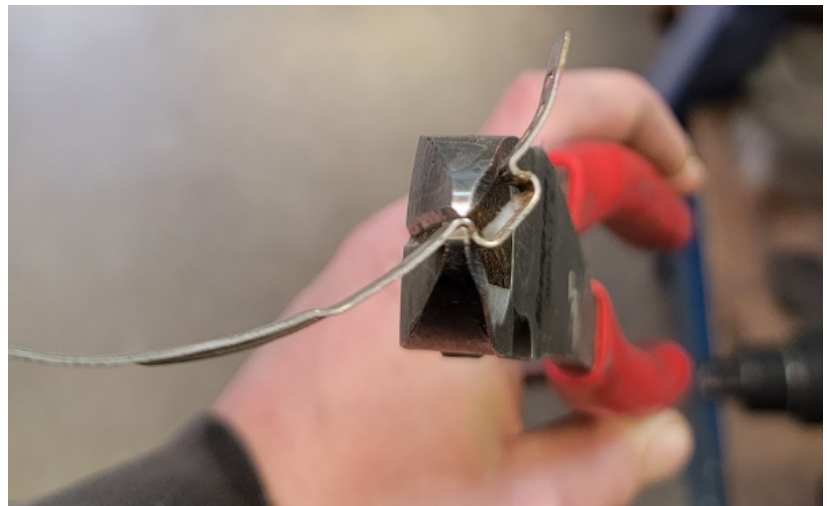
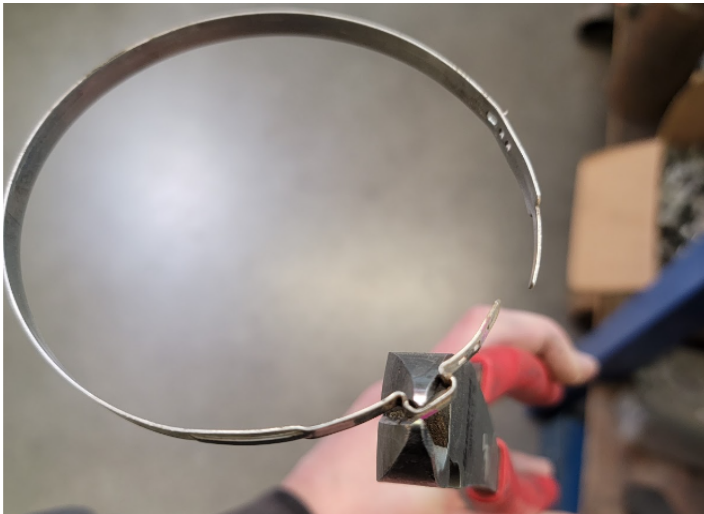


BILLET TIE ROD KIT (FULL)

INSTALL RAPTOR | BRONCO | BRONCO RAPTOR | RAM TRX

Step 3 (Cont.)

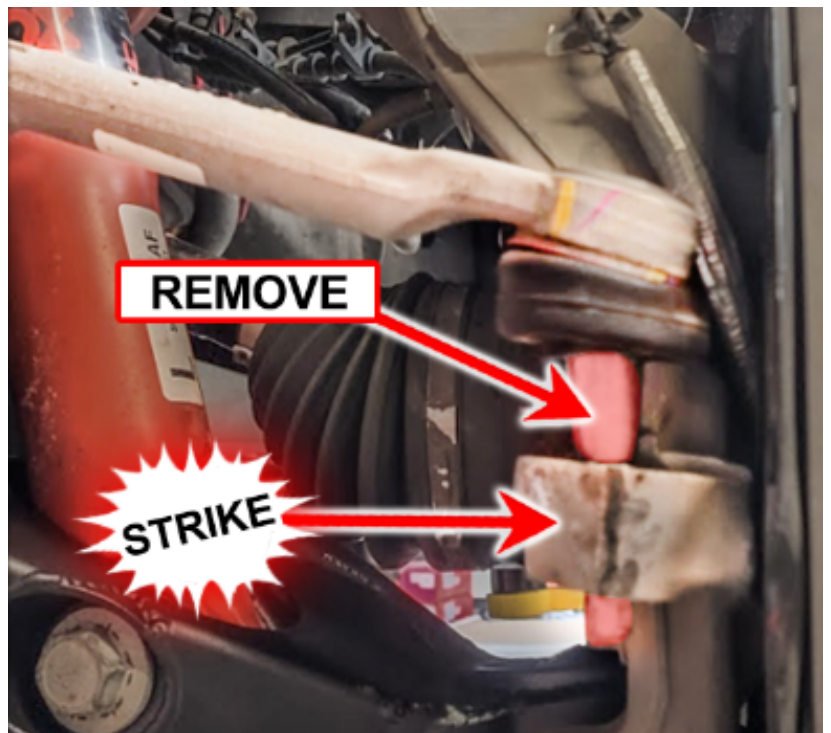
Carefully with a pair of side cutters, place them as shown and with just a little pressure, the clamp will un bend - then repeat on the other side.



Step 4:

Now loosen and remove the tie rod nut.

Once the nut is removed, strike the spindle with a hammer where shown in the picture, this will dislodge the tie rod from the spindle and allow it to be removed.





BILLET TIE ROD KIT (FULL)

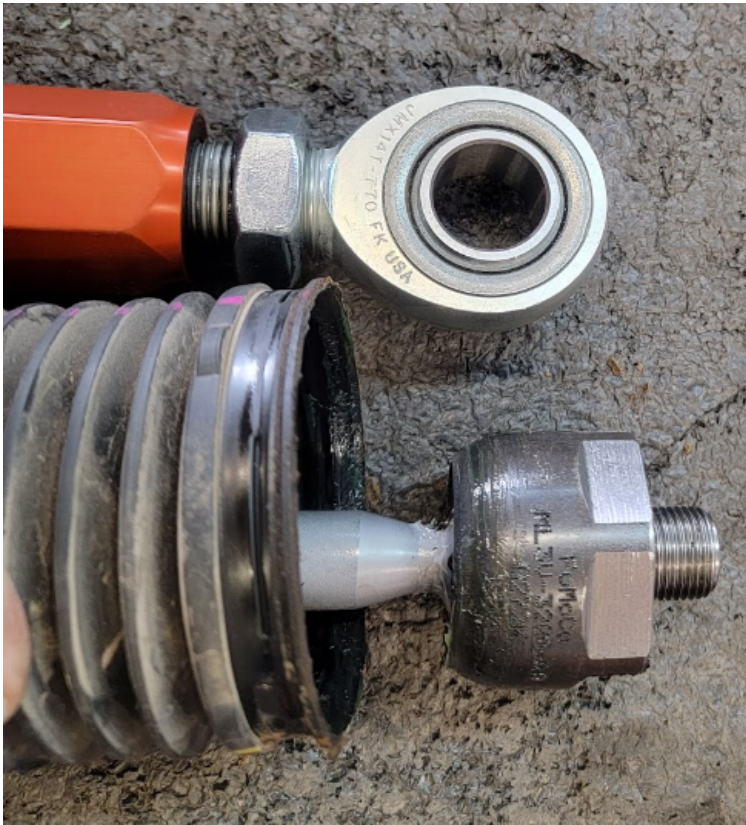
INSTALL RAPTOR | BRONCO | BRONCO RAPTOR | RAM TRX

Step 5:

Remove the inner tie rod from the steering rack and set aside, the inner boot clamp is all that will be reused.

Step 6:

Line up your factory tie rod assembly next to your new tie rod assembly and adjust to get them close.





BILLET TIE ROD KIT (FULL)

INSTALL RAPTOR | BRONCO | BRONCO RAPTOR | RAM TRX

Step 7:

Install inner clevis into the steering rack.

Apply red loctite to the threads of the bolt before installing, and torque to factory inner tie rod spec.



Step 8:

Install your new full tierod to the inner clevis with spacers and bolt.

We recommend anti seize on the spacers and the bolt to help combat corrosion.





BILLET TIE ROD KIT (FULL)

INSTALL RAPTOR | BRONCO | BRONCO RAPTOR | RAM TRX

Step 9:

Install the new tie rod boot onto the full tie rod leaving it in the middle of the tie rod for now.

Step 10:

Install our new full tierod to the spindle using the supplied spacers and bolt, tighten at this time. We recommend using anti seize on the spacers and on the bolt to prevent corrosion.





BILLET TIE ROD KIT (FULL)

INSTALL RAPTOR | BRONCO | BRONCO RAPTOR | RAM TRX

Step 11:

Repeat steps 3-10 for the opposite side.

Step 12:

With the steering wheel straight, adjust your tie rods to match the measurement you took in step 2.

Once that is matched, tighten the jam nuts.

Step 13:

Slide your new tie rod boot up and secure it to the rack reusing the factory clamp. There won't be a clamp on the tie rod side.





BILLET TIE ROD KIT (FULL)

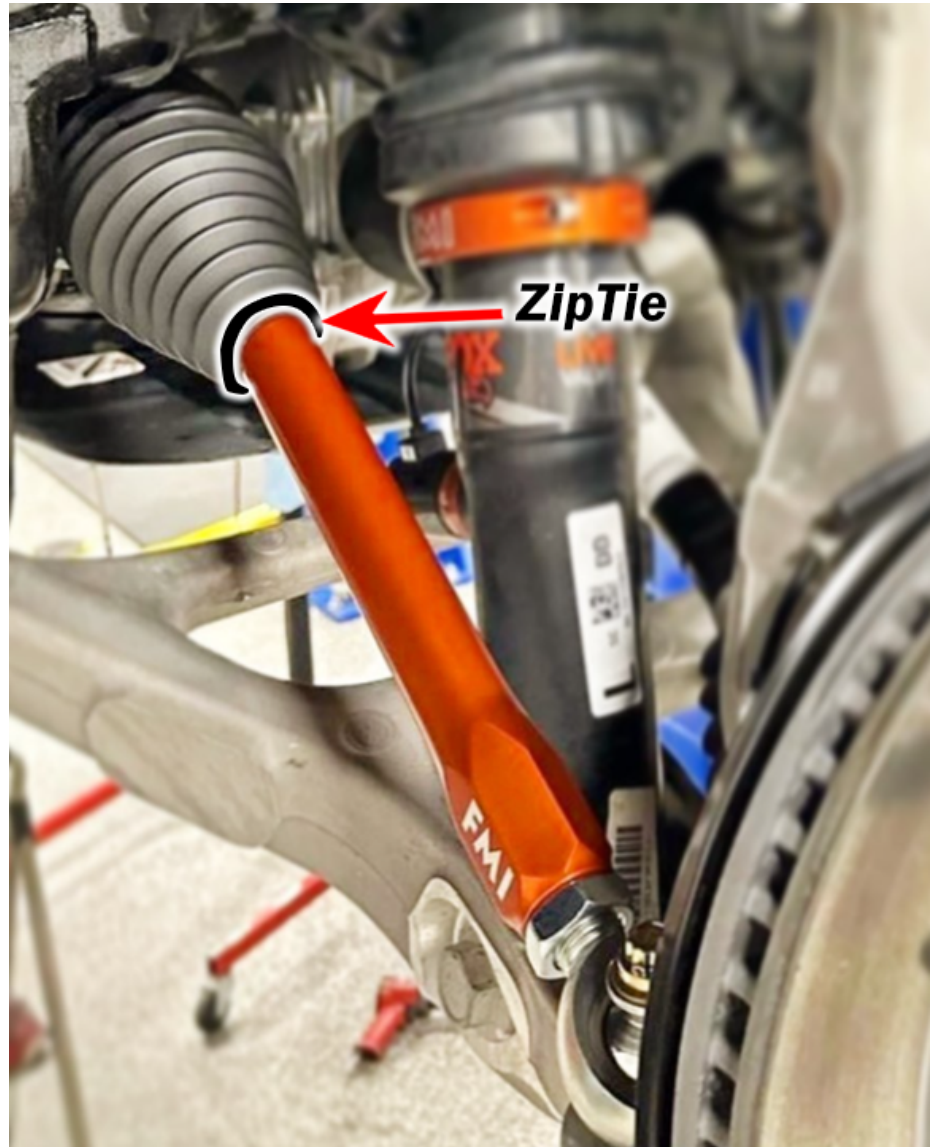
INSTALL RAPTOR | BRONCO | BRONCO RAPTOR | RAM TRX

Step 14:

Reinstall tires and set back down on the ground and have a professional alignment performed.

Step 15:

It is recommended to install a zip tie tightly around the bottom of the boot of the tie rod so water & debris is kept out as it steers.



Step 16:

Hit the trails and enjoy your new FMI Billet Tie Rod Kit.

Be sure to tag @FoutzMotorsports / #FoutzMotorsports on social media so we can show off your front suspension upgrade on our page!



BILLET TIE ROD KIT (FULL)

INSTALL RAPTOR | BRONCO | BRONCO RAPTOR | RAM TRX