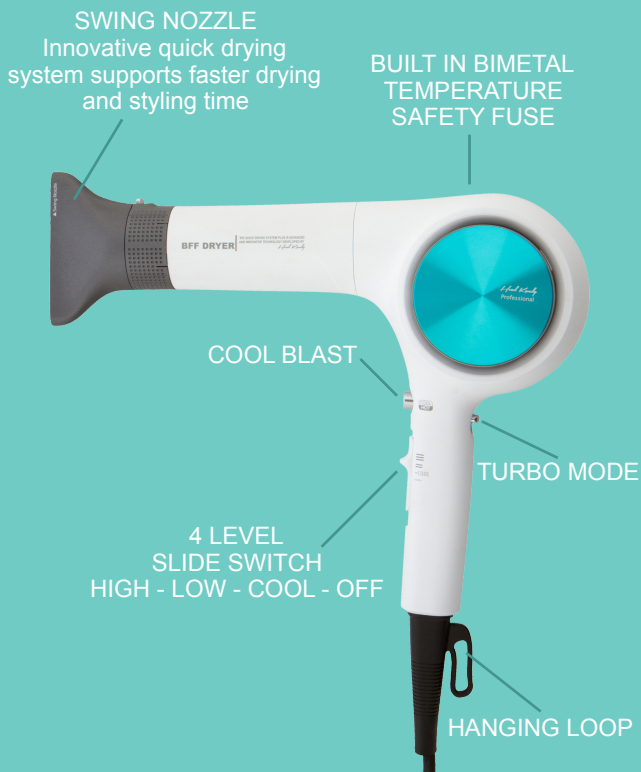


The BFF Professional Hair Dryer

PRODUCT PROFILE:

- Model s109
- AC125W 60Hz 1400W
- Turbo mode for faster drying; twice as powerful performance
- Optimized temperature implementation maximizes professional styling
- Swing nozzle dries hair quickly by wicking away moisture 5x faster
- Concentrated nozzle for precision styling
- Prevents harmful electromagnetic radiation exposure
- Generates ions to reduce static electricity and maintain moisture
- Turbo button and three heat control switch supports six modes



OPERATION:

1. Before plugging in, check that the voltage on the rating label corresponds to the local mains voltage.
2. Insert power plug into an electrical outlet, ensuring that the plug matches the socket.
3. Once the hair drying process is complete, power off your blow dryer, unplug it, and allow your appliance to cool prior to storage.
4. Never use this appliance near water where it can fall or be pulled into a tub, basin, or shower.
5. Do not block the inlet and/or the output of the airflow. If the intake or output is blocked, the appliance will overheat and malfunction.
6. Safety precautions included, but not limited to those stated herein, should be observed at all times while the appliance is in use, especially if the appliance is used around children.
7. Do not disassemble the product.
8. Do not use on anything other than human hair.
9. Do not allow hair to enter the inlet.
10. Do not use near combustible materials such as blankets or paper.
11. During the initial use, an odor may occur in the heat wire but will gradually disappear after several uses.
12. Do not forcibly pull the power cord or wrap the cord around the appliance. It is recommended that the AC cord be periodically inspected.
13. Do not use any other electric heater simultaneously in the same outlet. This may increase risk of malfunction due to overheating.

INSTRUCTIONS FOR USE:

1. Gently towel dry hair to remove excess water. DO NOT use on hair that is overly wet or saturated. Use a heat protectant to help minimize damage.
2. After gently towel drying hair, use at a distance of approximately 8" or more from hair to prevent it from getting pulled into the suction port.
3. For best results, blow dry hair from top to bottom alternating between warm and cool air.
4. Do not concentrate airflow on any one area for extended periods of time.
5. After styling/drying the hair, apply product if desired.

Be careful not to touch the nozzle or body other than the handle when in use or immediately after use until the appliance has cooled down.

CARE:

- Do not rinse with water as it may damage the appliance.
- For cleaning, wipe with a dry cloth.
- Do not use harsh products, benzene, or paint thinner as it may damage your appliance.
- Dropping or blunt force can and will damage the product.

STORING:

- Turn the appliance off by sliding the power button to off. Unplug from the outlet. Allow for the appliance to cool before storing. Store in a dry, safe place out of the reach of children.
- The BFF will fit in the RBF Bag for easy and convenient storage.

WARNING: KEEP OUT OF THE REACH OF CHILDREN!

As with most electrical appliances, parts are electrically live even when the switch is off. To reduce the risk of death by electric shock:

- Always unplug after use
- DO NOT use while bathing, in the shower, near basins or other vessels containing water.
- DO NOT store or place this appliance where it can fall or be pulled into a bathtub or sink.
- DO NOT submerge or drop into water or other liquid.

WARNING!

To reduce risk of electric shock, burns, or injury to self or persons:

- An appliance should never be left unattended when plugged in.
- Close supervision is necessary when this appliance is being used on, or near children or individuals with certain disabilities.
- If the appliance is not working properly, has been dropped, damaged, or submerged in water, contact *Head Kandy* for repair or replacement options.
- Do not use outdoors or operate where aerosol (spray) products are being used or where oxygen is being administered.
- Do not use while sleeping.
- Do not use with an extension cord.
- Do not use this appliance with a voltage converter.
- Product is hot when in use. Do not let eyes or bare skin touch heated surfaces.

- Use this appliance only for its intended use as described in this manual.
 - Do not wrap cord around the appliance.
 - Do not use if the power cord is damaged.
- In the event of damage, discontinue use immediately and contact *Head Kandy* for repair or replacement options.
- Do not use any harsh or abrasive cleaners on the product.

FOR HOUSEHOLD USE ONLY

This appliance may have a polarized plug. As a safety feature, this plug will fit in a polarized outlet only one way. If the plug does not fit fully in the outlet, reverse the plug. If it still does not fit, contact a qualified electrician. Do not attempt to defeat this safety feature.

IMPORTANT INFORMATION ABOUT ALCI SAFETY PLUG:

1. "TEST" button ensures that the ALCI plug device is operational.
2. "RESET" button clears the ground fault and restores the ALCI to normal operation.
3. The ALCI should be tested every use.
4. When the RED button extends out, the ALCI has operated. This indicates that the appliance is not in proper functioning condition and is to be discarded or returned to *Head Kandy* for examination and repair.
5. If there is any indication that the appliance does not operate in the proper functioning condition, please contact *Head Kandy* for replacement or repair options (see "Limited 1-Year Warranty" section).

LIMITED 1-YEAR WARRANTY

This warranty is for the original purchaser of the *Head Kandy* BFF and is nontransferable. Head Kandy LLC warrants that this appliance will have no defects in material and workmanship under normal household usage for 1 year from the date of purchase.

Keep the original sales receipt for proof of purchase to attain warranty provisions. For 1 year from the date of purchase, Head Kandy LLC will repair or replace, on its own accord, any *Head Kandy* BFF or parts found to be defective. This warranty does not cover any shipping or handling charges which may incur. This warranty does not include any damages caused by misuse, accident, neglect, abuse, use with a voltage other than what's marked on the product, or for commercial purposes.

If your *Head Kandy* BFF is found to be defective within the time period of this warranty, please contact the Head Kandy LLC warranty department. If the product is discontinued or no longer available, a replacement may be made with a similar product of equal or greater value. Any attempt to repair or service this product on your own will void the warranty.

Head Kandy

1-800-937-1917

warranty@headkandypro.com

office@headkandypro.com

131 Crane Lane
Salida, CO 81201