

KRAFTEI

USER MANUAL

KRAFTEI



FLIGHT SPEED UP TO 240KM/H

Warning: This aircraft is a hobby grade product,
only for people 14-year old or above.

Before operating this unit, please read these instructions completely.

Examine your kit carefully!

Our model kits are subject to constant quality checks throughout the production process, and we sincerely hope that you are completely satisfied with the contents of your kit. However, we would ask you to check all the parts before you start construction, referring to the Parts List, as we cannot exchange components which you have already modified. If you find any part is not acceptable for any reason, we will readily correct or exchange it once we have examined the faulty component. Just send the offending part to our Model Department. Please be sure to include the enclosed complaint form, duly completed. We are constantly working on improving our models, and for this reason we must reserve the right to change the kit contents in terms of shape or dimensions of parts, technology, materials and fittings, without prior notification. Please understand that we cannot entertain claims against us if the kit contents do not agree in every respect with the instructions and the illustrations.

Caution!

Radio-controlled models, and especially model aircraft, are by no means playthings in the usual sense of the term. Building and operating them safely requires a certain level of technical competence and manual skill, together with discipline and a responsible attitude at the flying field. Errors and carelessness in building and flying the model can result in serious personal injury and damage to property. Since we, as manufacturers, have no control over the construction, maintenance and operation of our products, we are obliged to take this opportunity to point out these hazards and to emphasise your personal responsibility.



1.Lower fuselage and wing	1PC	8. Motor fixing screw	2PCS
2.Upper fuselage	1PC	9. Control horn	2PCS
3.Equipment canopy	1PC	Control horn fixing screw	8PCS
4.Rudder	1PC	10.Push rod Z bend and plastic clip	2PCS
5.Canopy clips	2PCS	11.Propeller	1PC
6.Spinner	1PC		
7.Motor mount	1PC		

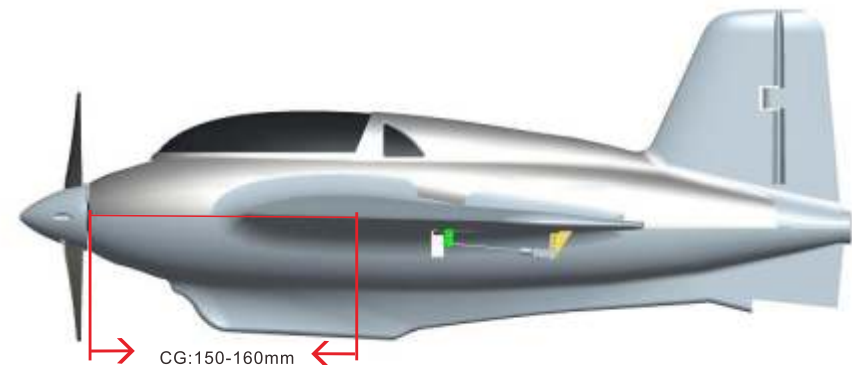
Features

1. Very good and beautiful line design.
2. Suitable for both low and high speed flying. Pilots not only can experience strong impact feeling in high speed up to 240km/h, but they also can enjoy stable flying performance in low speed.
3. Simple to build, easy for maintenance and transport.

Specifications

Fuselage length:470mm (18.5 in.)
 Wingspan: 702mm (28in.)
 Flying Weight: 285-300g (with battery)
 Motor: AS2212-10 KV2280 Outrunner Brushless
 ESC: 30-40 Amp
 Propeller: 5*5
 Servo: 8g*2 micro servo
 Radio : 4/more channel
 Receiver:4/more channe
 Battery: 1800-2200mAh 11.1V 25C Li-Po battery

CG position: 150-160mm away from fuselage nose



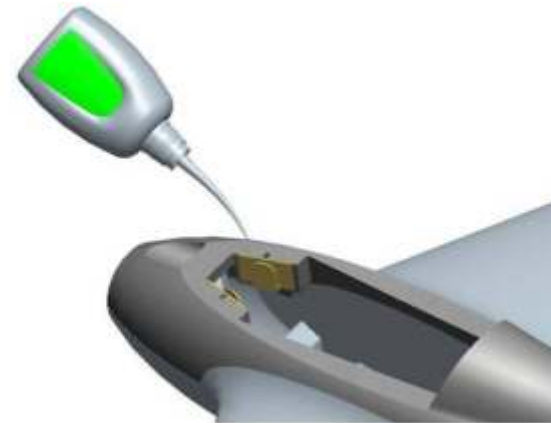
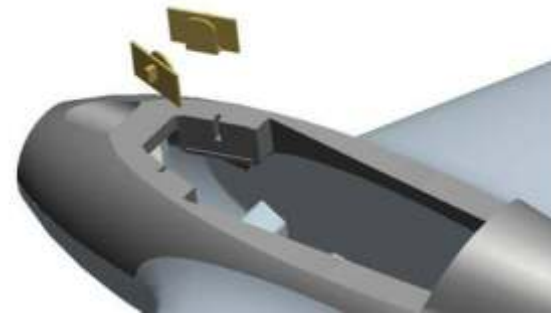
Steps of ASSEMBLY



1. Put the motor mount into the slot of fuselage nose, then fix with glue.



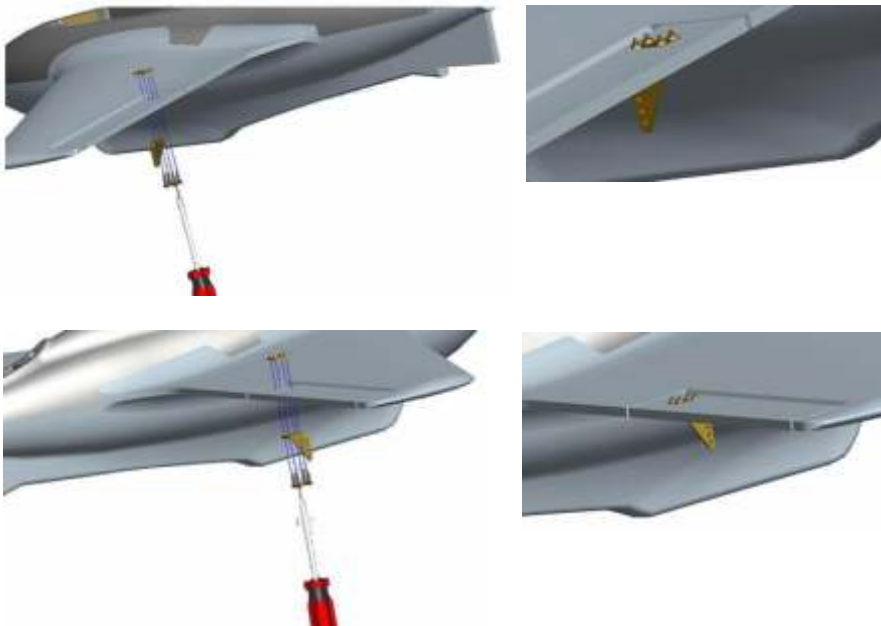
2. Fix upper and lower fuselage together with glue.



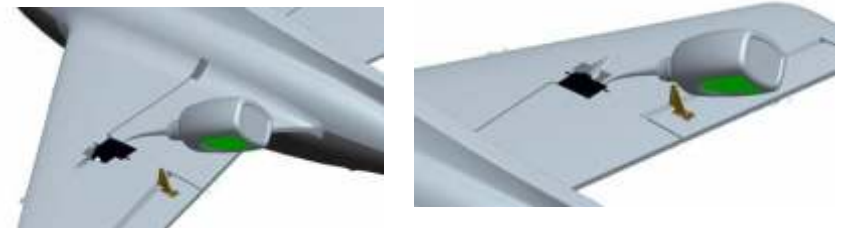
3. Place canopy clip into the upper fuselage, then fix with glue.



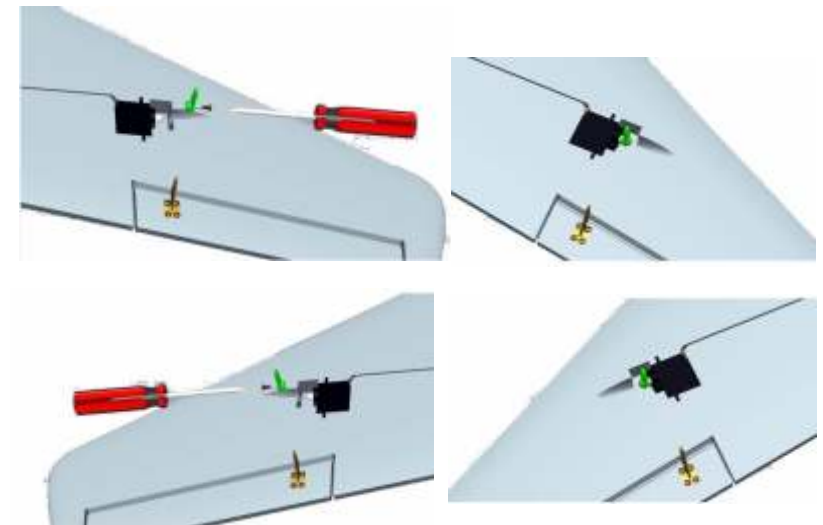
4. Install canopy clips in canopy, then fix with glue.



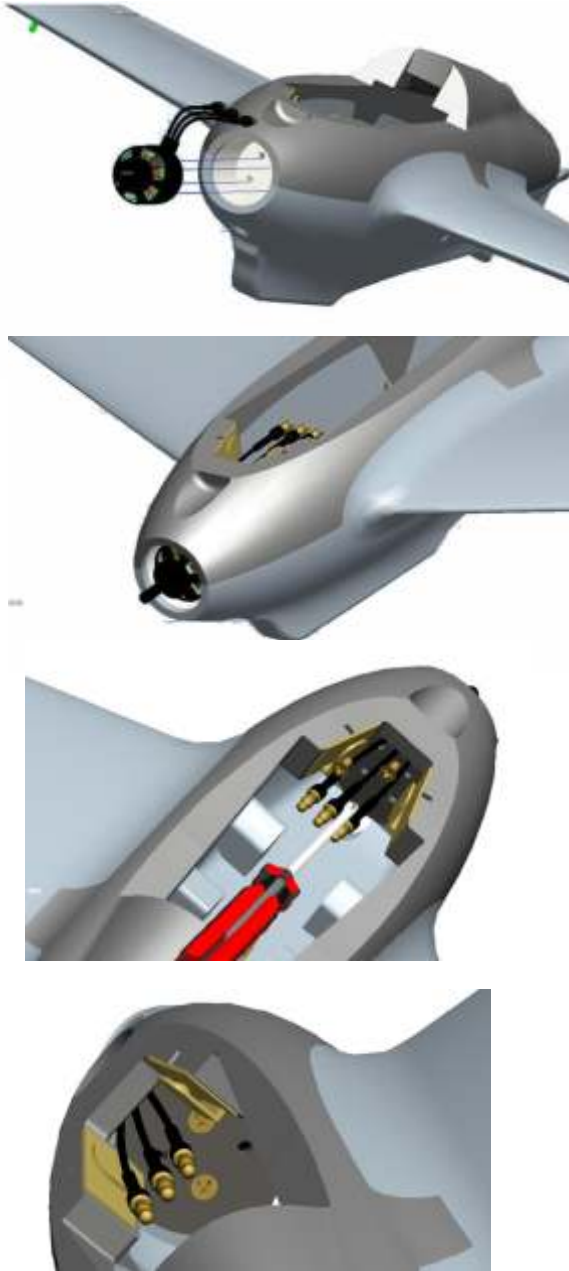
5. Install control horns on bottom ailerons, and fix with self-tapping screw by screwdriver.



6. Install aileron servo into the servo houses on bottom wing, then fix with glue.



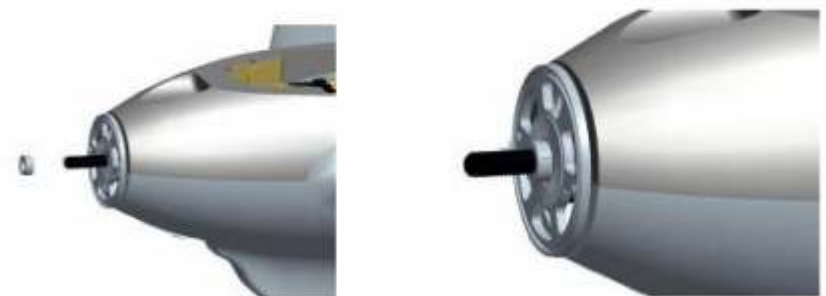
7. Install servo arms.



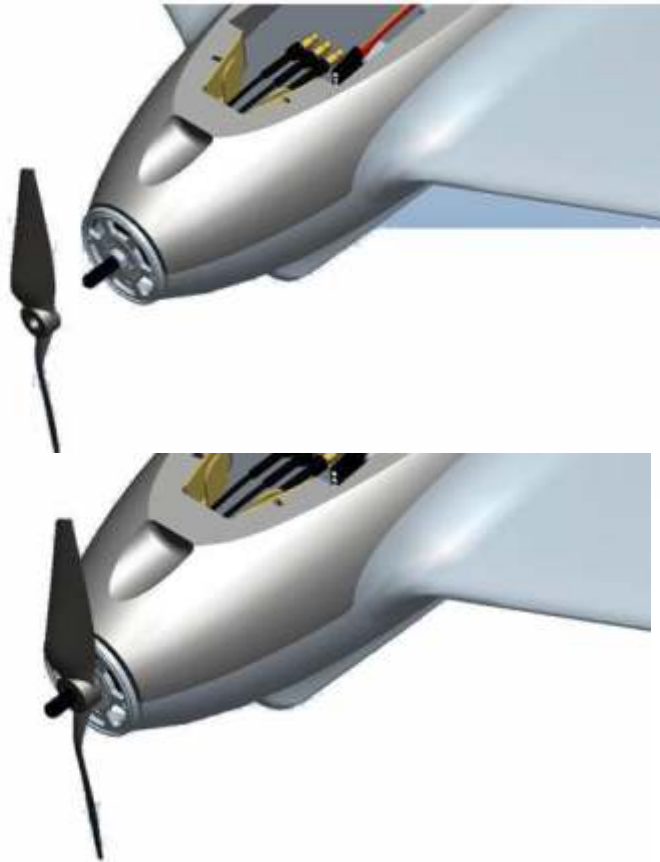
8. Install the motor as picture shown.



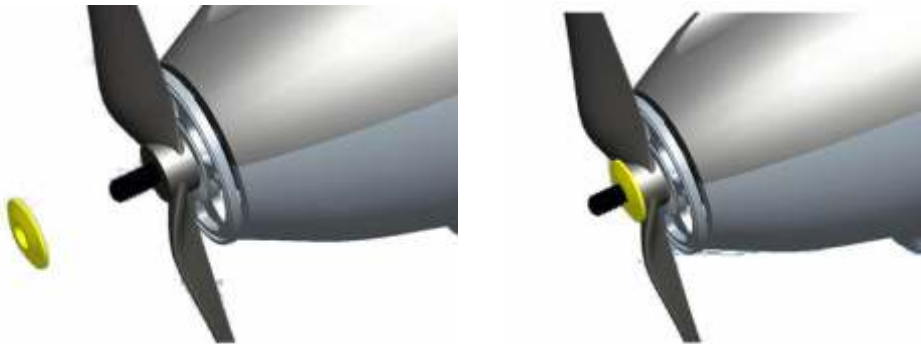
9. Place spinner backboard on motor shaft.



10. Put propeller hub on shaft.



11. Install propeller.

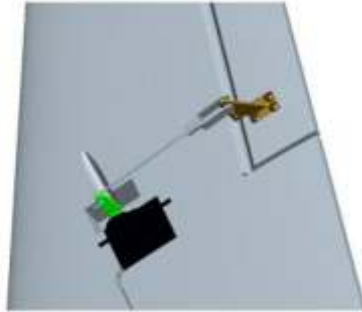


12. Put on the washer and nut, then screw down.

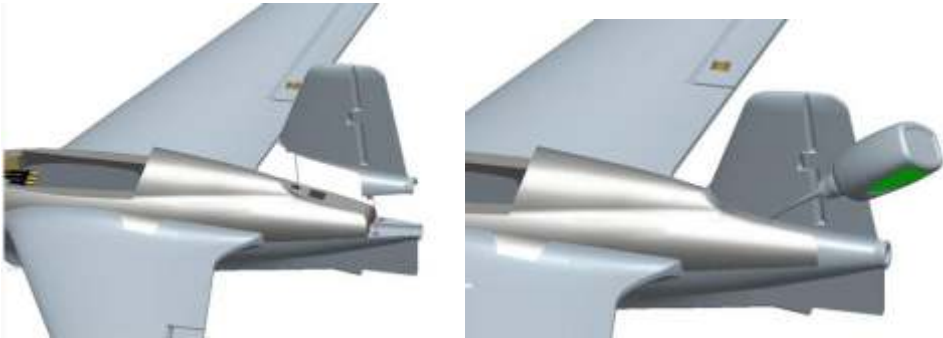


13. Install the spinner, then fix with screw.

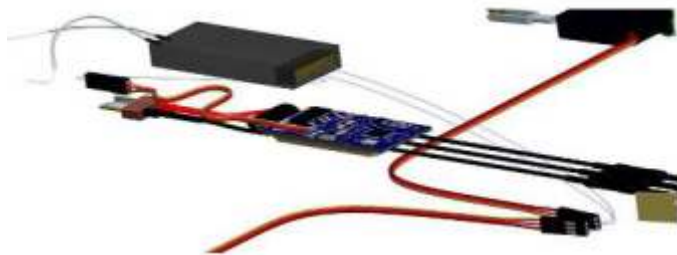
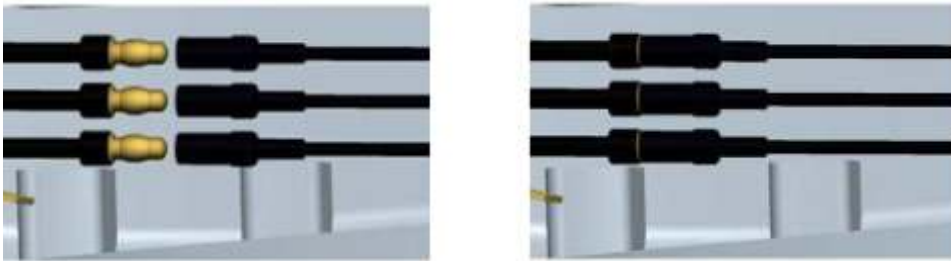




14. Install aileron push rod as pictures shown.



15. Install rudder into slot on rear fuselage, make sure they're perpendicular to each other, then fix with glue.



16. Connect the motor and ESC, then plug all connectors into corresponding receiver channel.



17. Power on and put battery inside equipment cabin, then cover the canopy.





Wing with lower fuselage



Upper fuselage



Equipment canopy



Rudder



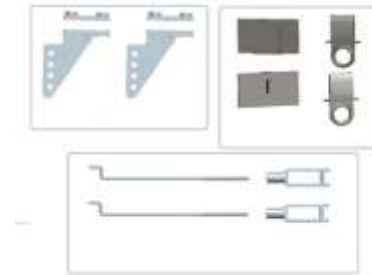
Motor mount



Spinner with Alu base



5*5 SF prop



Accessory pack



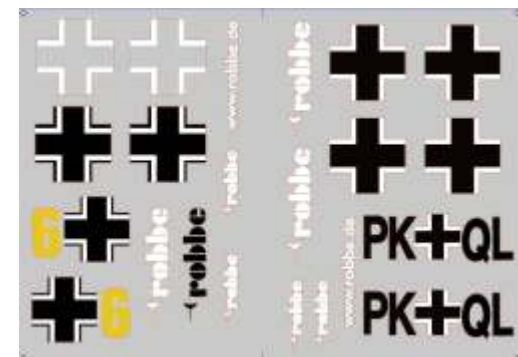
Motor 2212 KV2280



8g micro servo



30Amp



Water decal