





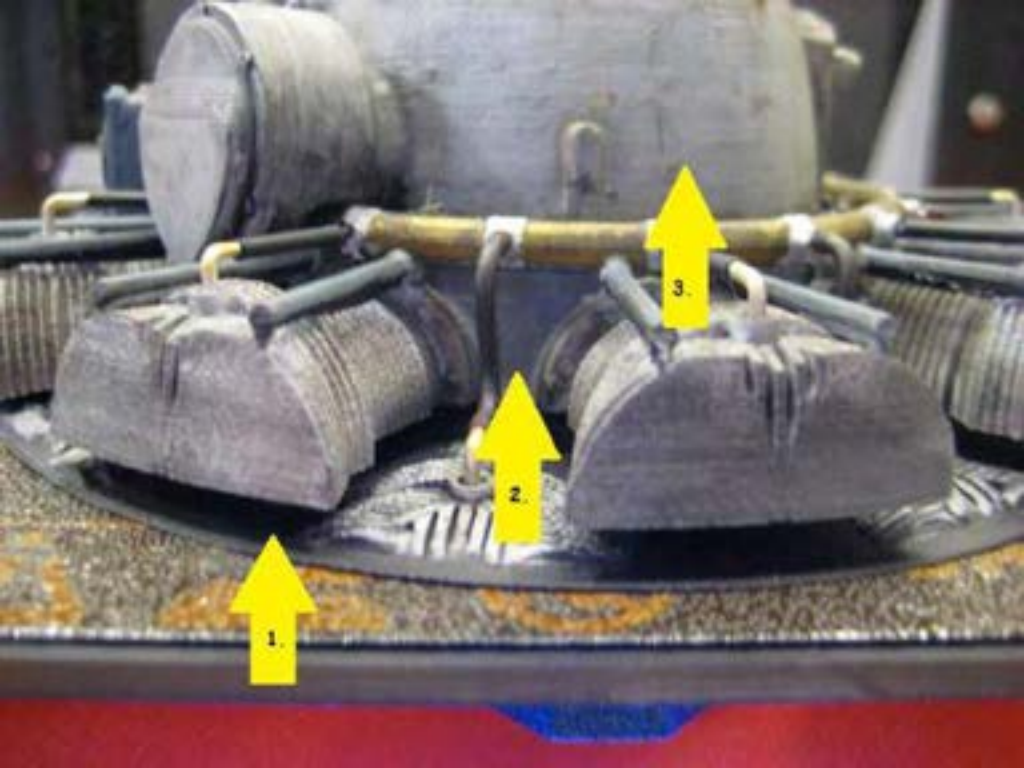


1.

2.

3.





1.

2.

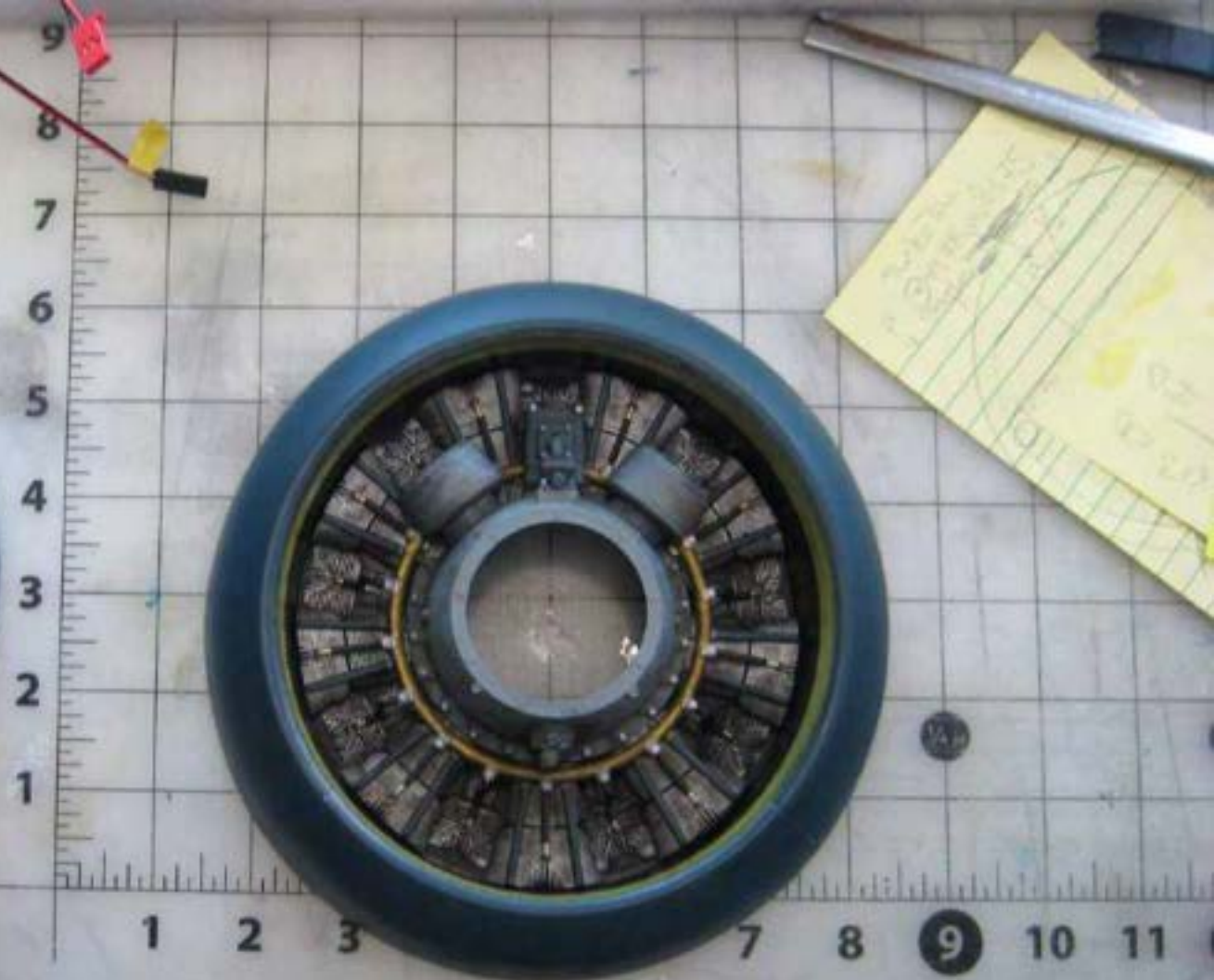
3.

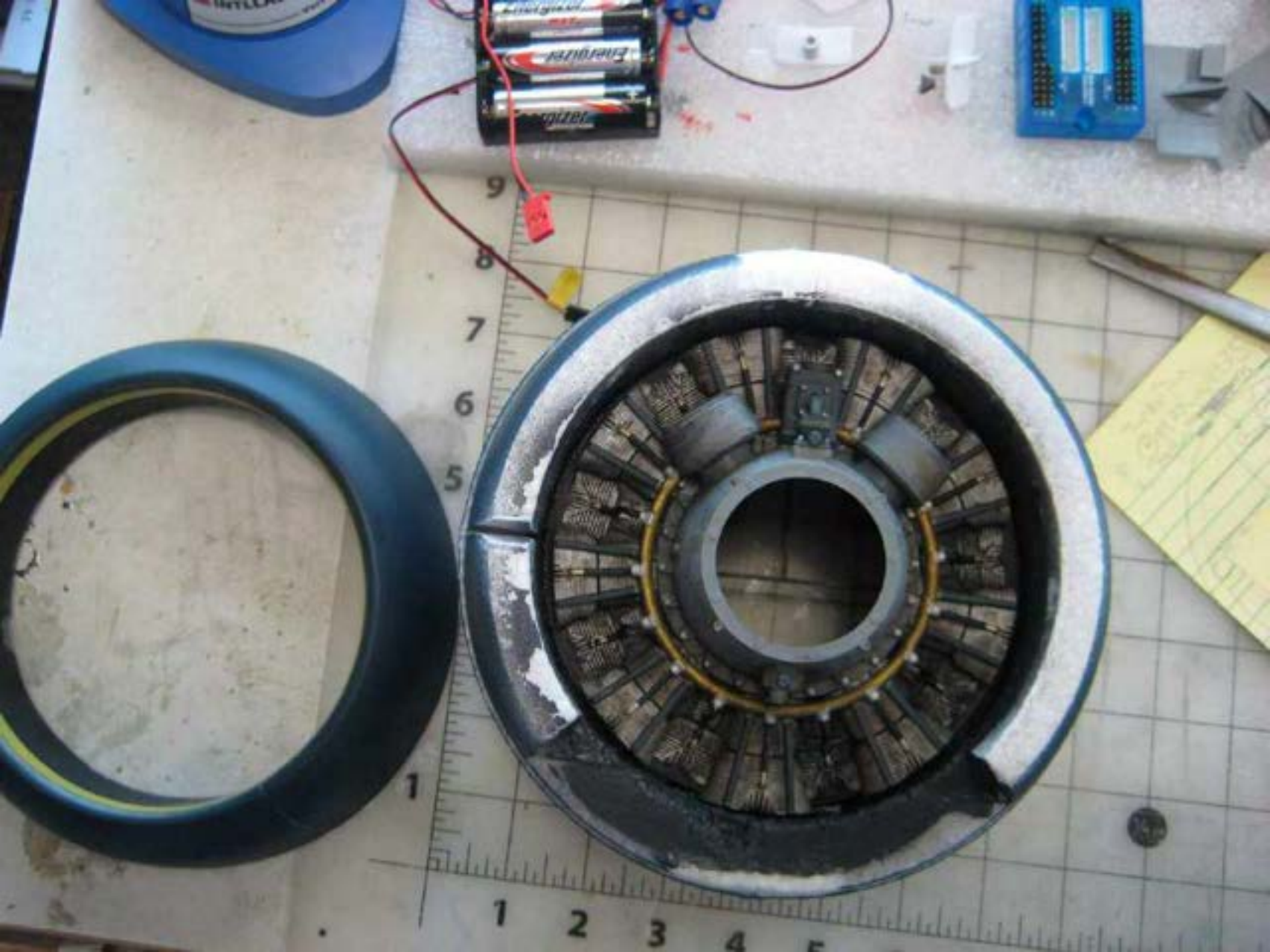


















LENOVO

LENOVO



















8  
9  
10

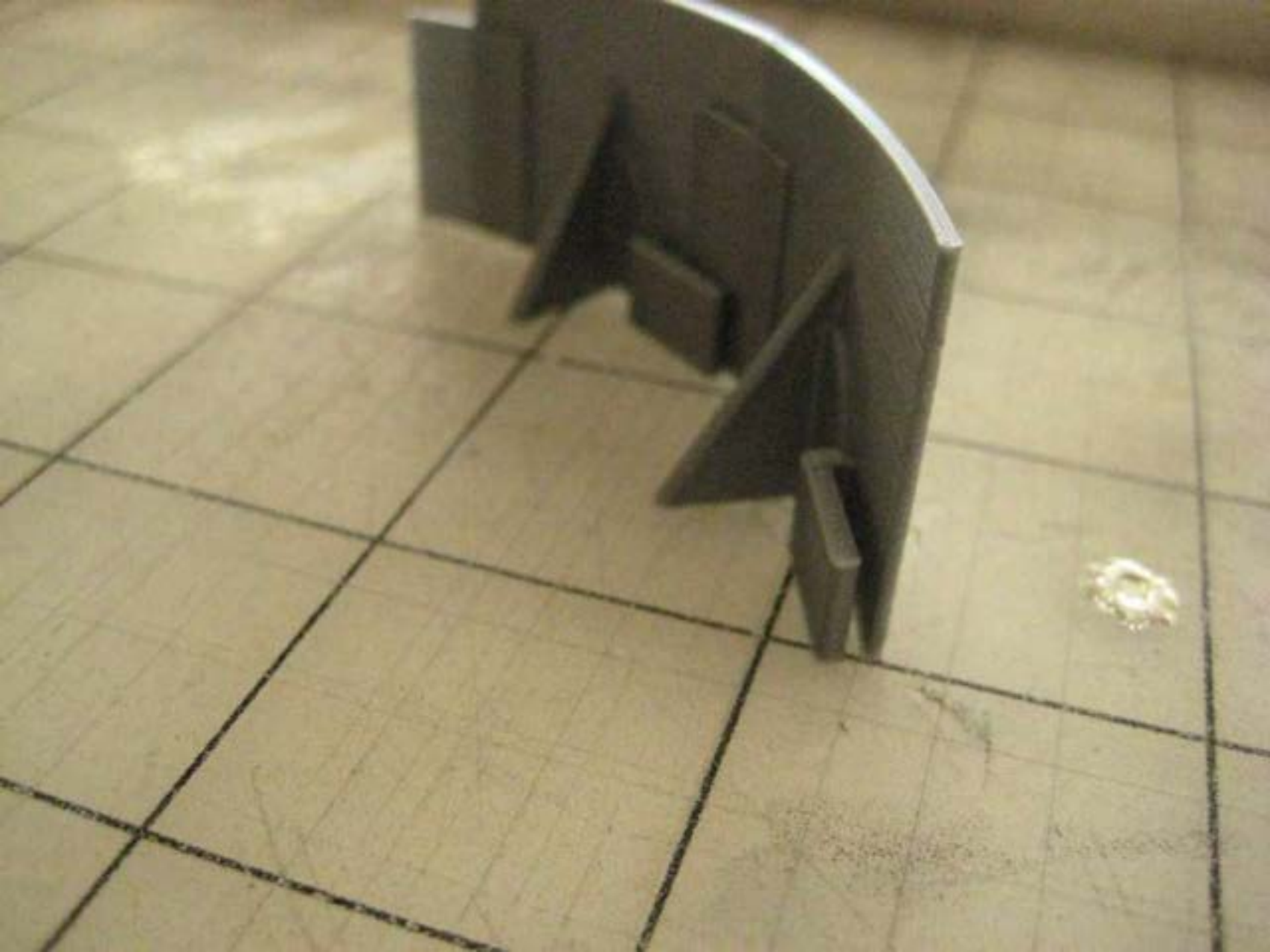






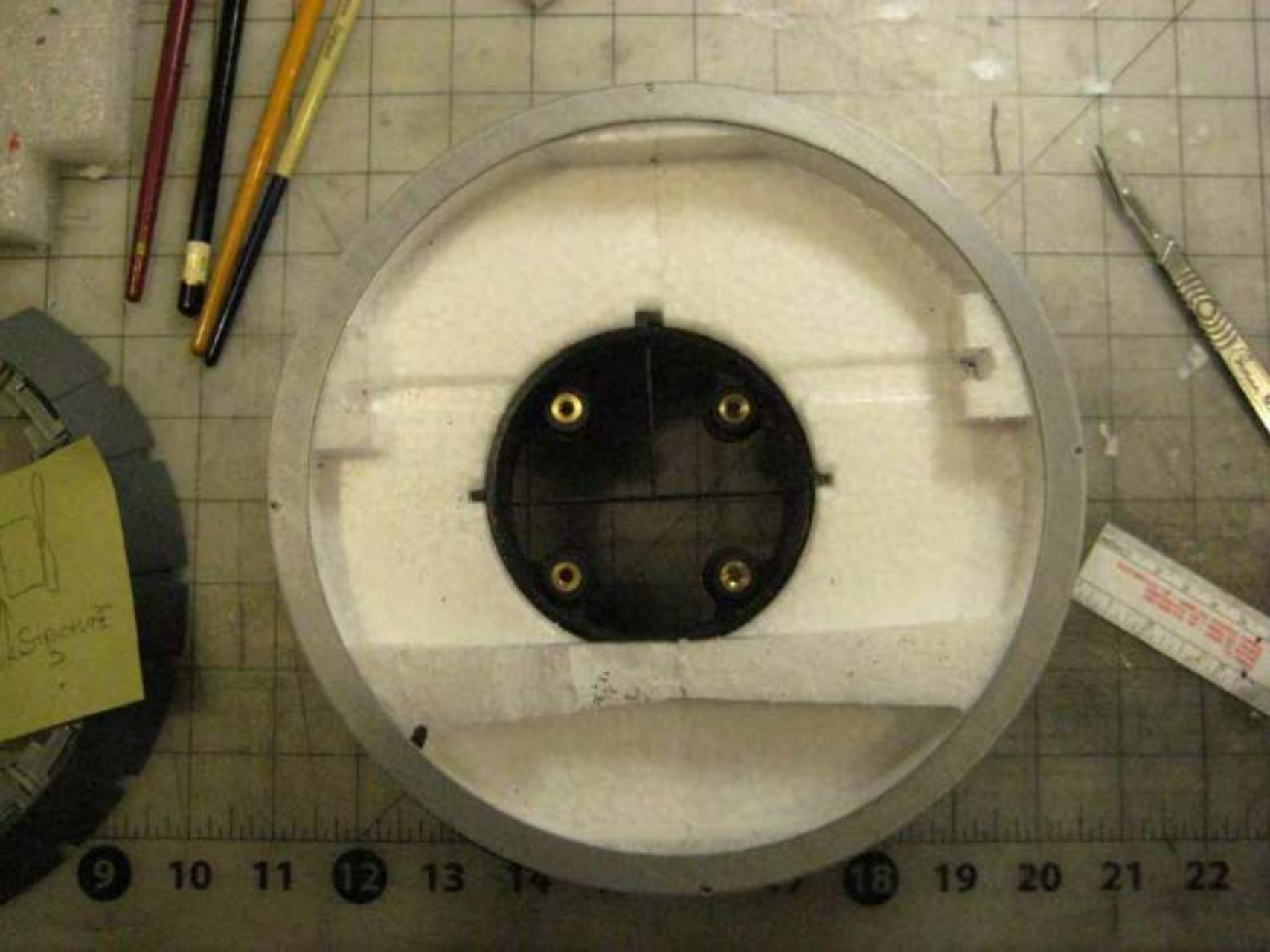












Sketch  
5

9 10 11 12 13 14 15 16 17 18 19 20 21 22

















































6:43<sup>AM</sup>  
37



















1.

2.

3.



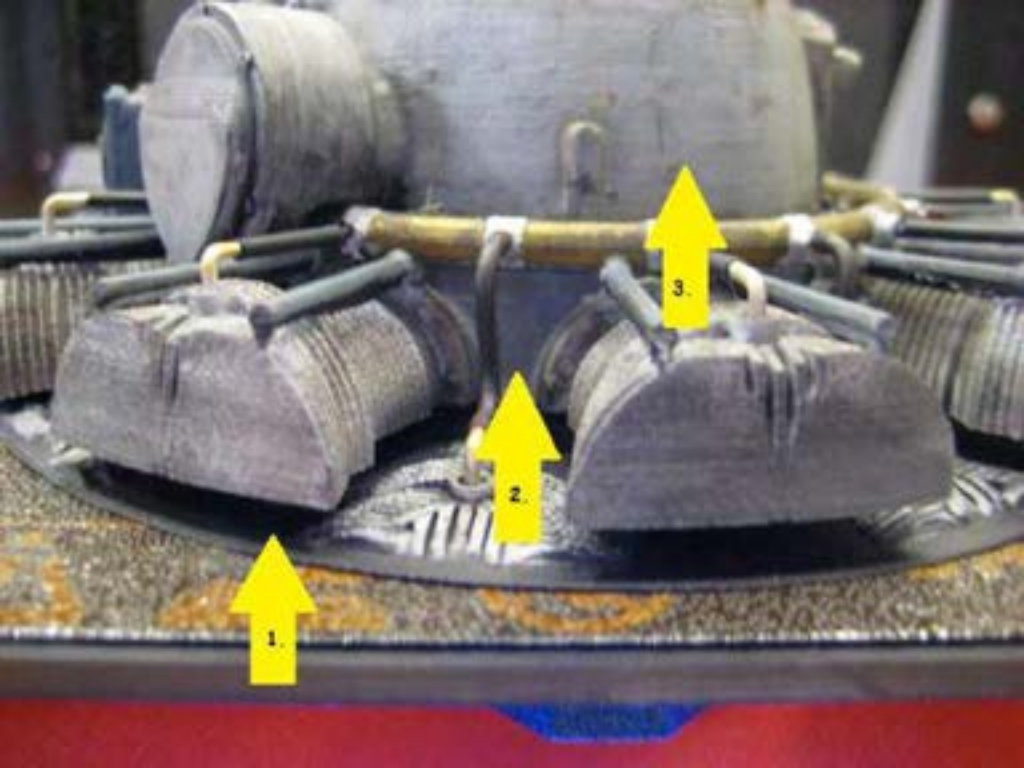
1.

2.

3.



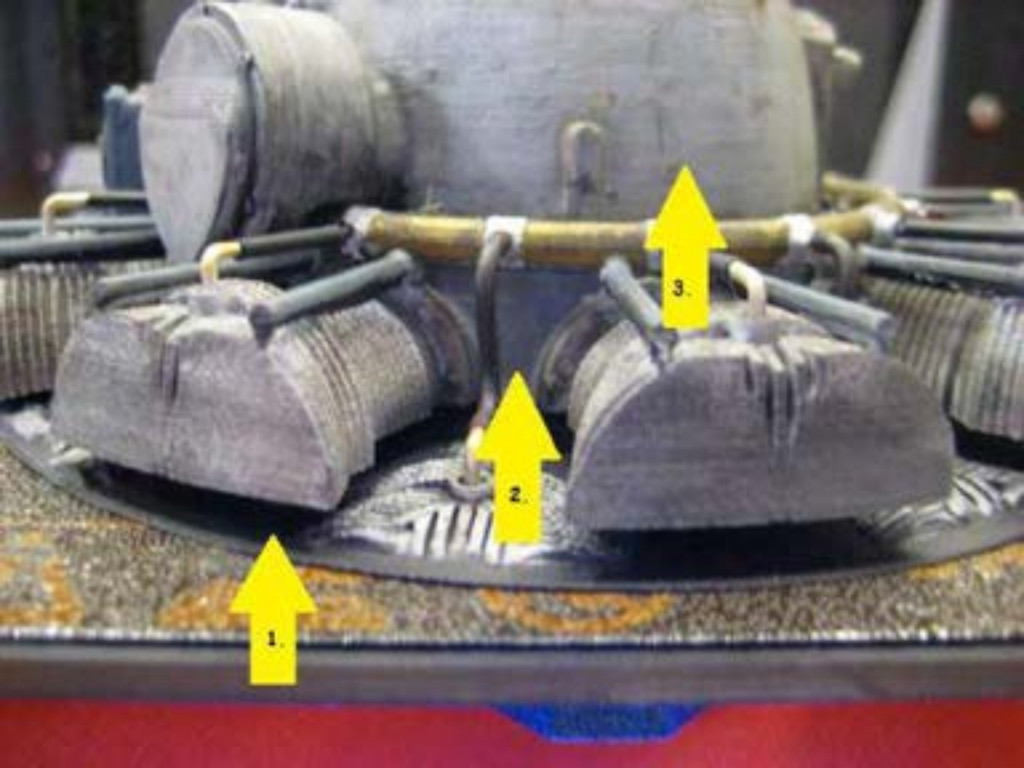




1.

2.

3.





















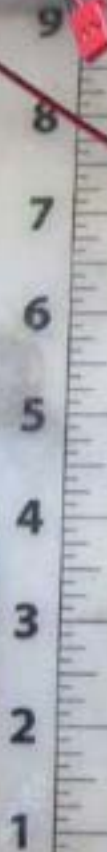


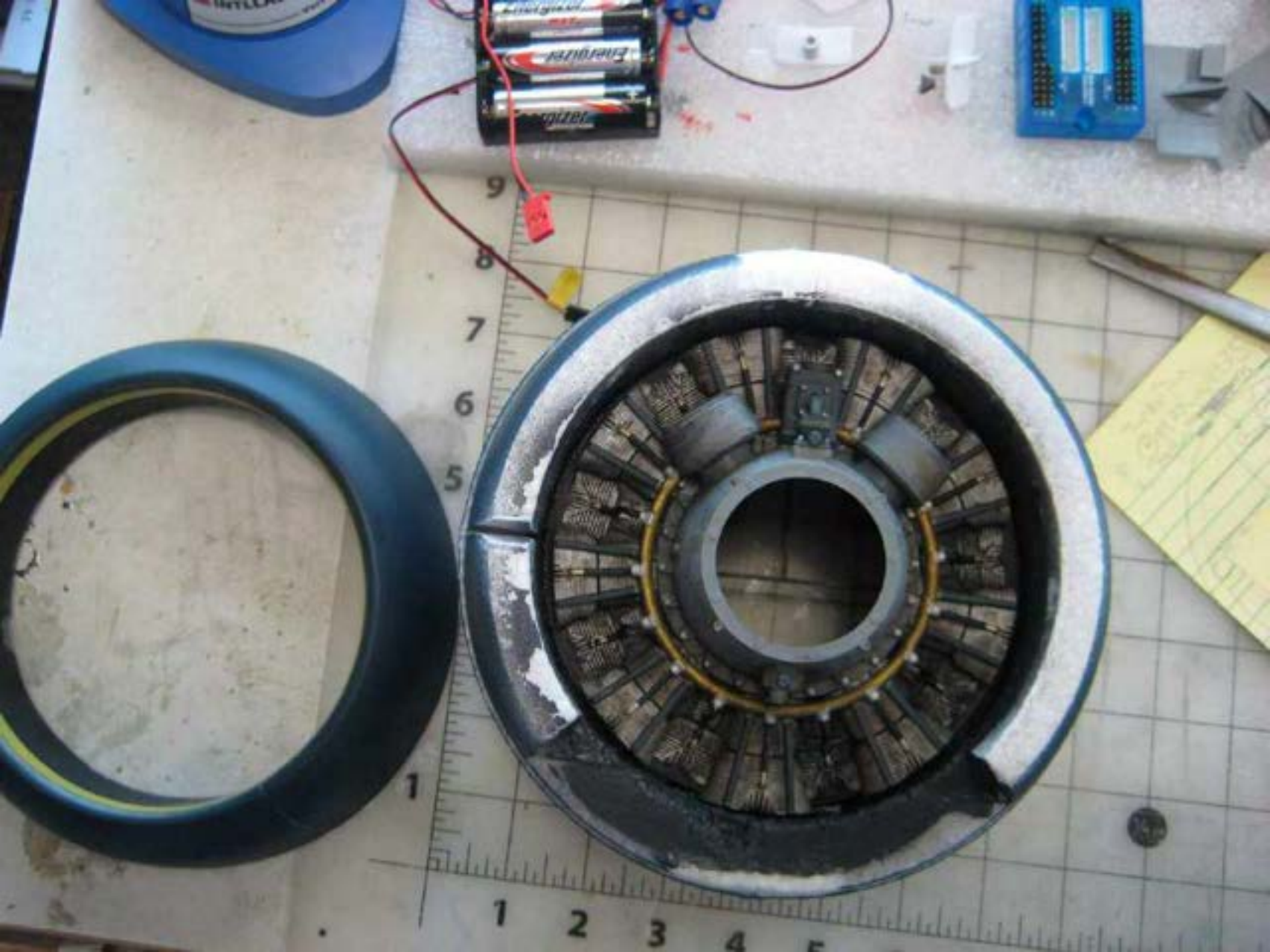
9  
8  
7  
6  
5  
4  
3  
2  
1

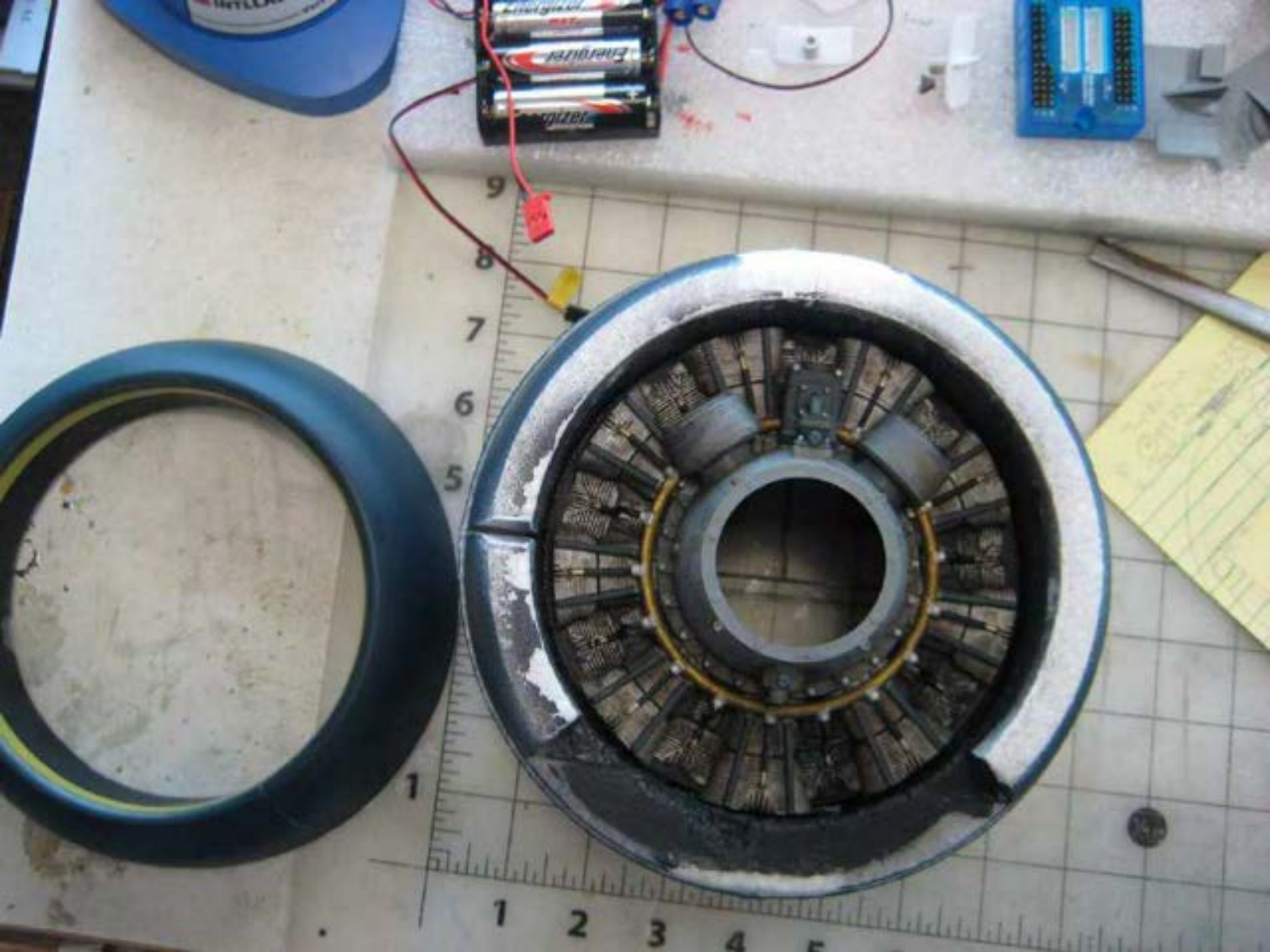
1 2 3 7 8 9 10 11

























0.020 in













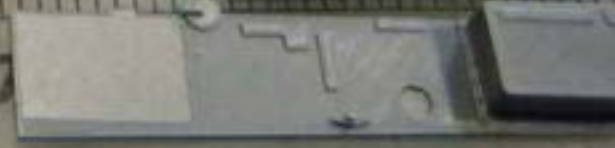


1 2

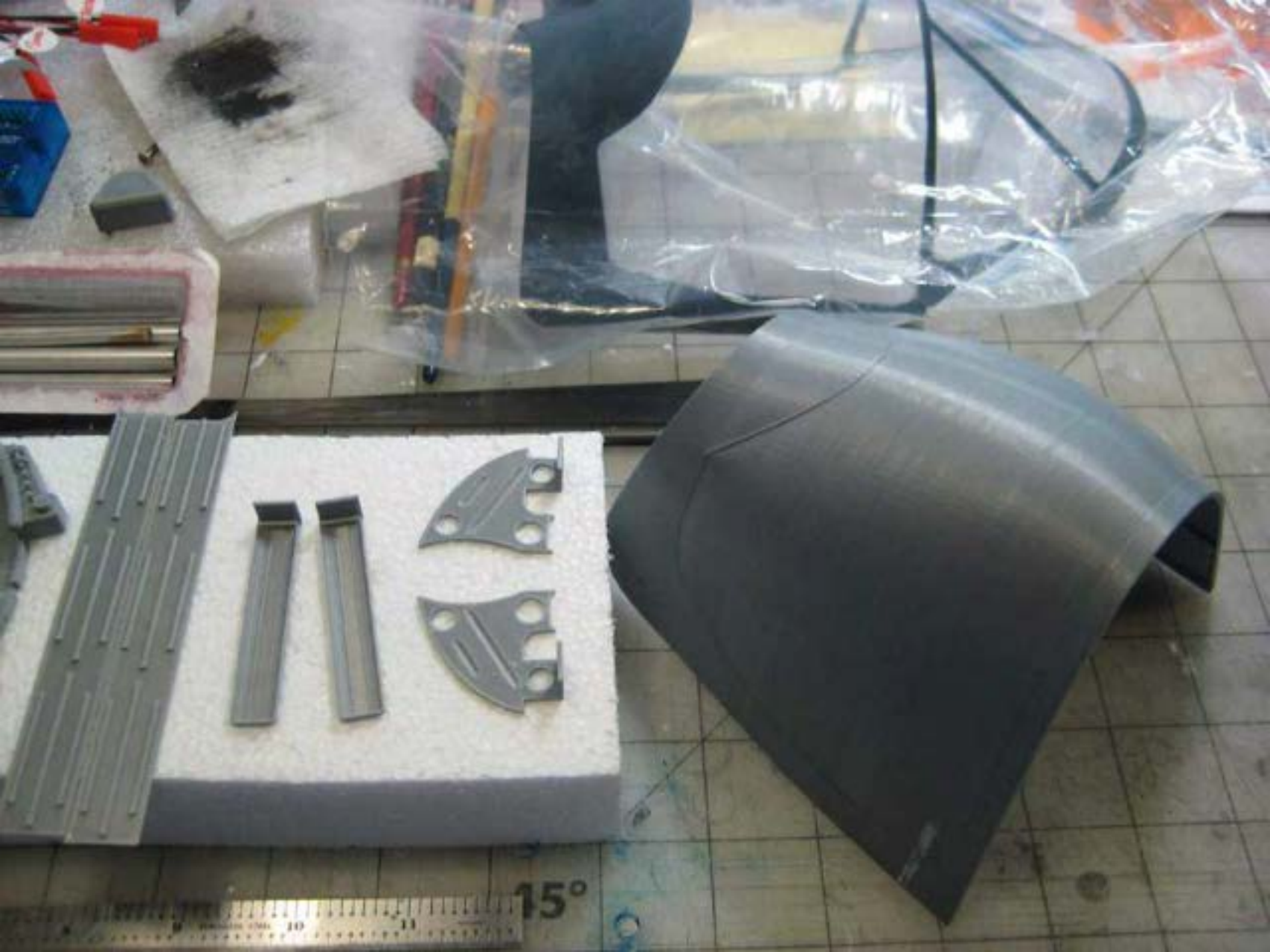




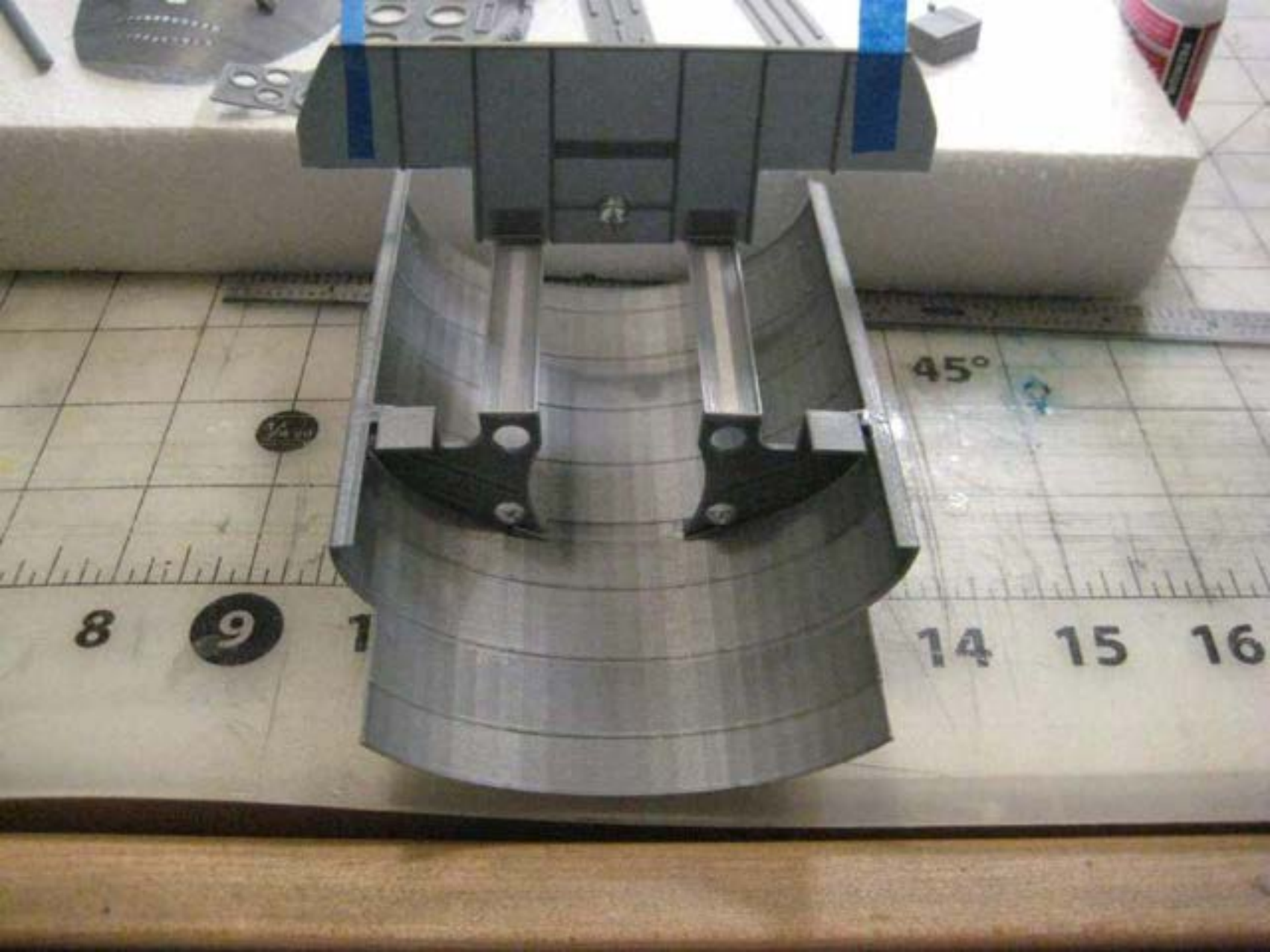
1 2







15°













EQUIPTO  
Multi-Porter 1/2" x 1/2" in  
Standard and Special Equipment







EGLETA

16 17 18 19 20 21 22 23 24

200  
2000

































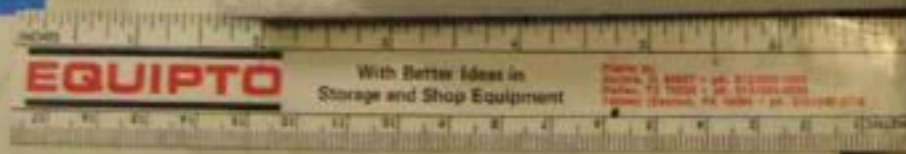
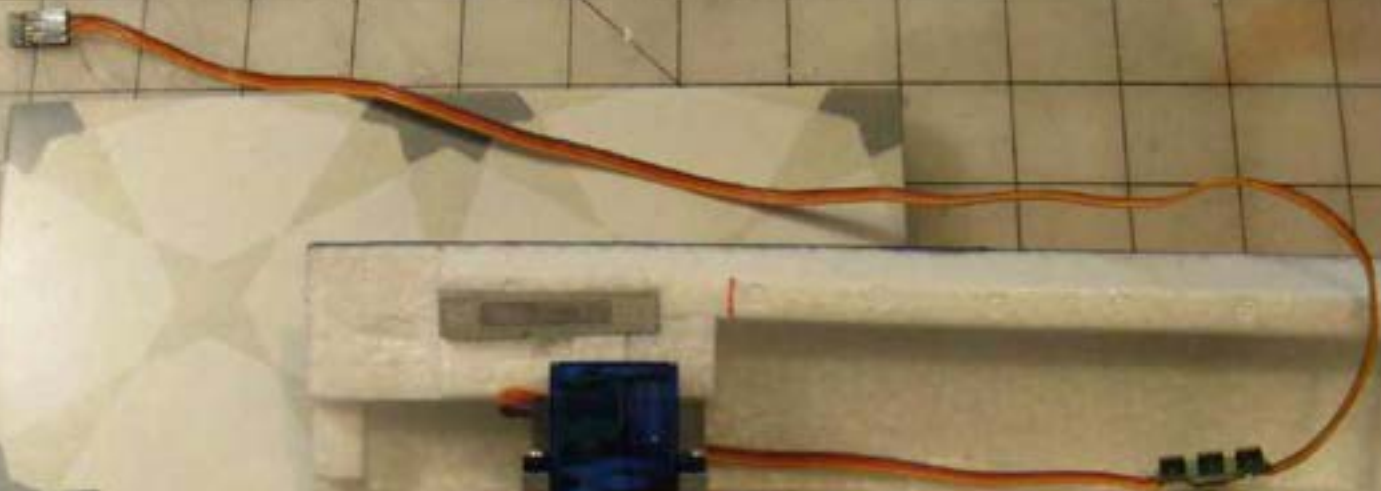


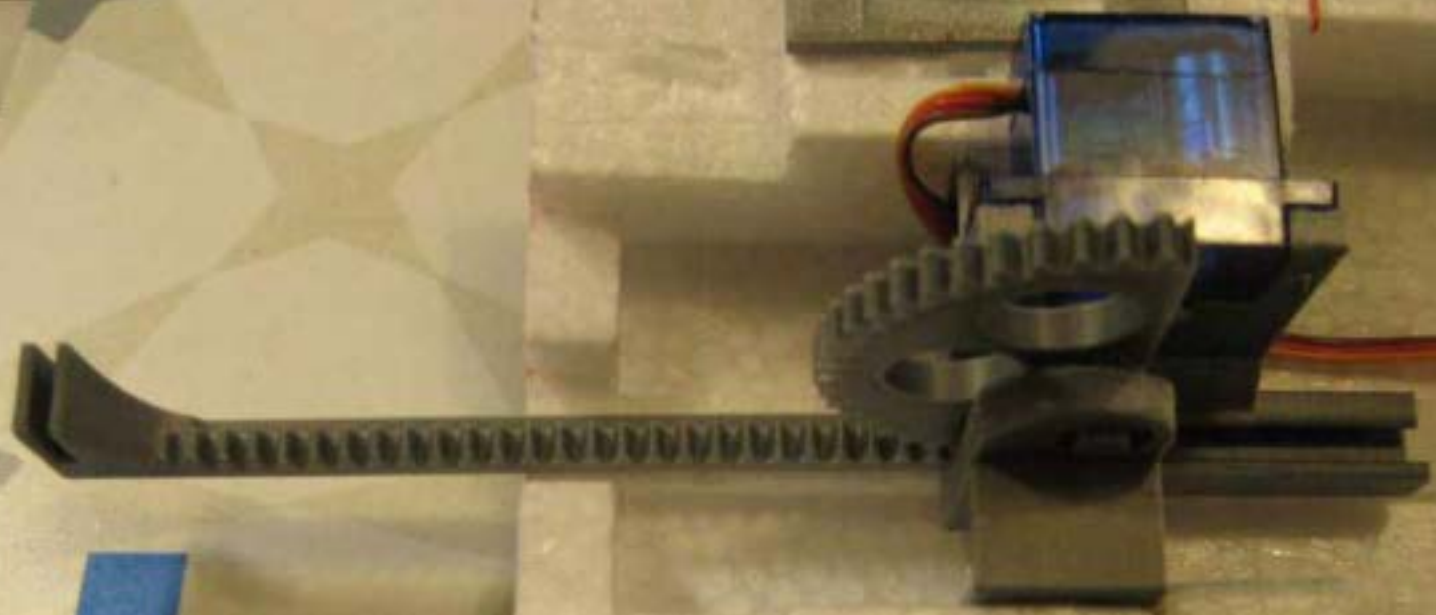












INCHES

**EQUIPTO**

With Better Ideas in  
Storage and Shop Equipment

Plants in:  
Aurora, IL 60007 - ph. 312/565-  
Dallas, TX 75225 - ph. 214/824-  
Tatamy (Easton), PA 18045 - p

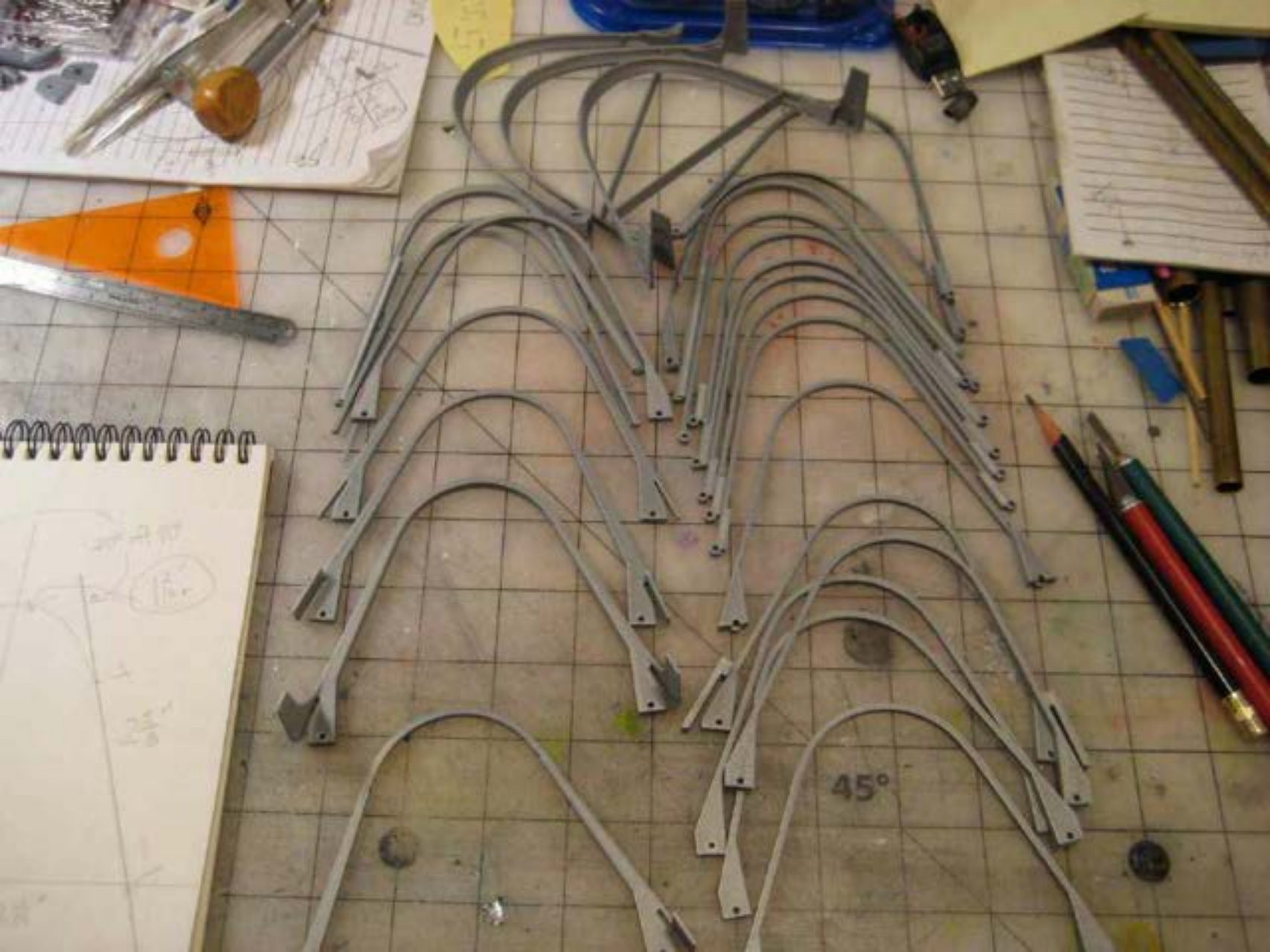
17 18 19 20 21 22 23 24 25 26 27 28 29 30 31 32 33 34 35 36 37 38 39 40 41 42 43 44 45 46 47 48 49 50 51 52 53 54 55 56 57 58 59 60 61 62 63 64 65 66 67 68 69 70 71 72 73 74 75 76 77 78 79 80 81 82 83 84 85 86 87 88 89 90 91 92 93 94 95 96 97 98 99 100











45°















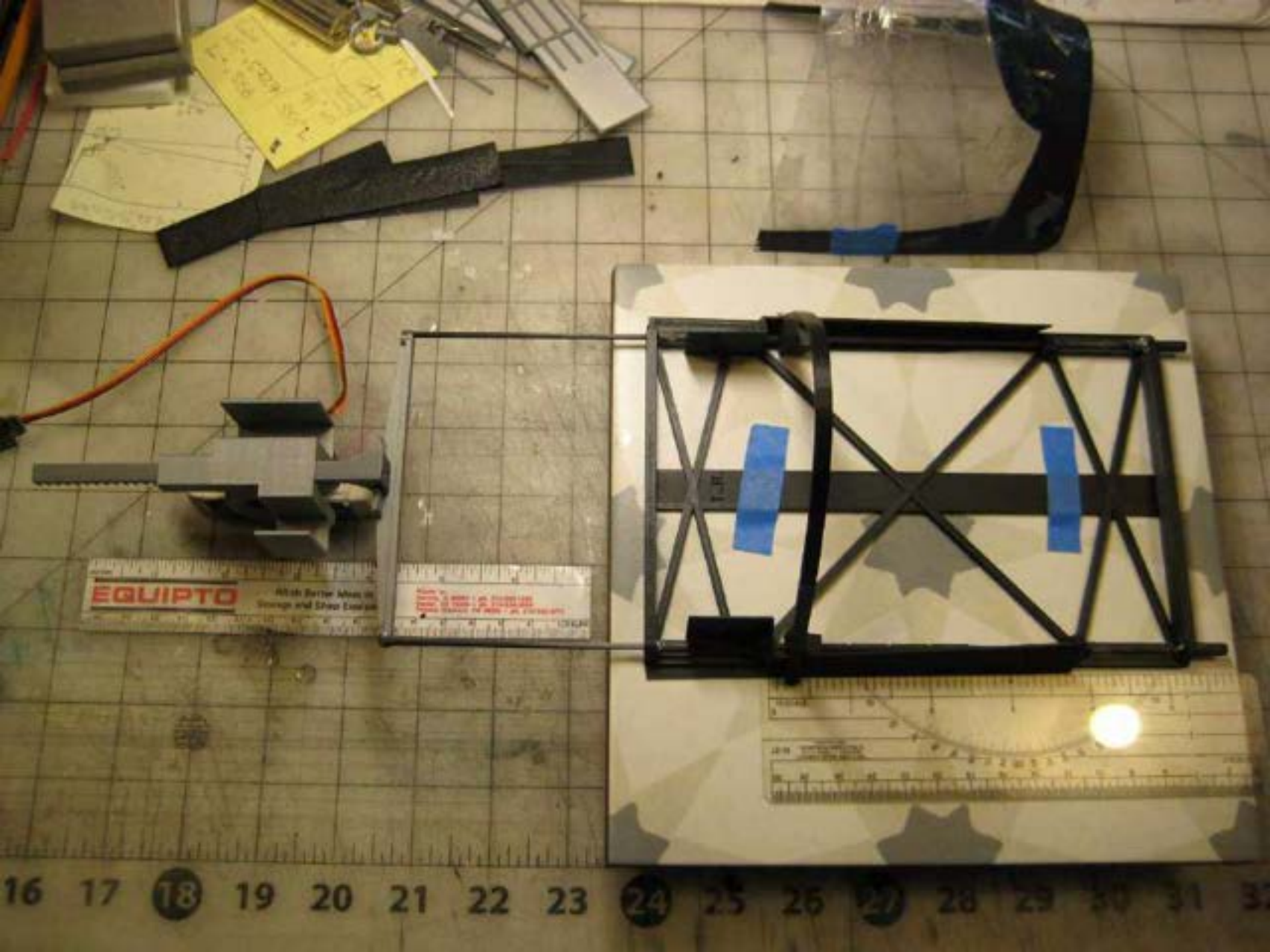












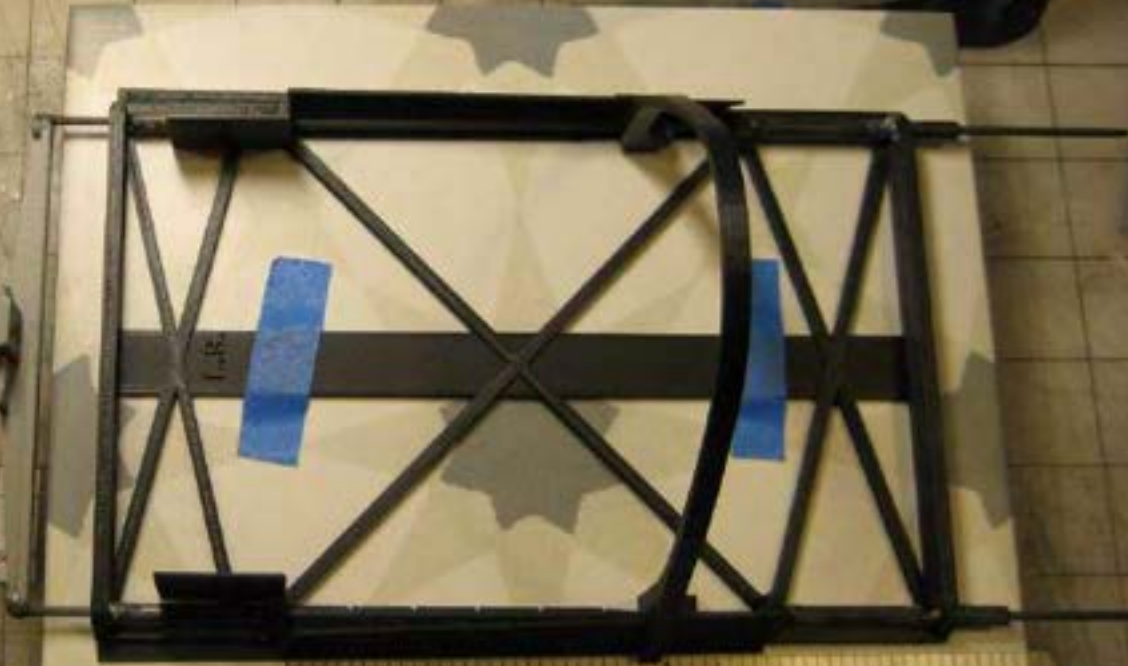
EQUIPTO

With Better Ideas in  
Design and Shop Layout

100% SATISFACTION GUARANTEE  
IF YOU ARE NOT COMPLETELY  
SATISFIED WITH YOUR PURCHASE,  
WE WILL REFUND YOUR MONEY.

16 17 18 19 20 21 22 23 24 25 26 27 28 29 30 31 32









19mm Round  
Hole  
Example

Rudder

LENOVO











































Rudder

119

Hobby



12V 2A  
5V 1A  
3.3V 1A  
GND

10/23

119mm Propeller  
10/23  
Fusion

Rudder  
😊





Rudder

Walter





Rudder

Fuselage

1/19/01m Redfern  
2-4/01

Handwritten red mark









































ENCLOSURE  RELEASE

ENCLOSURE ↑ RELEASE





























Ltr  
Tami  
"L P" S  
Laquet  
A











SKYTOP RECORD





















































































ع

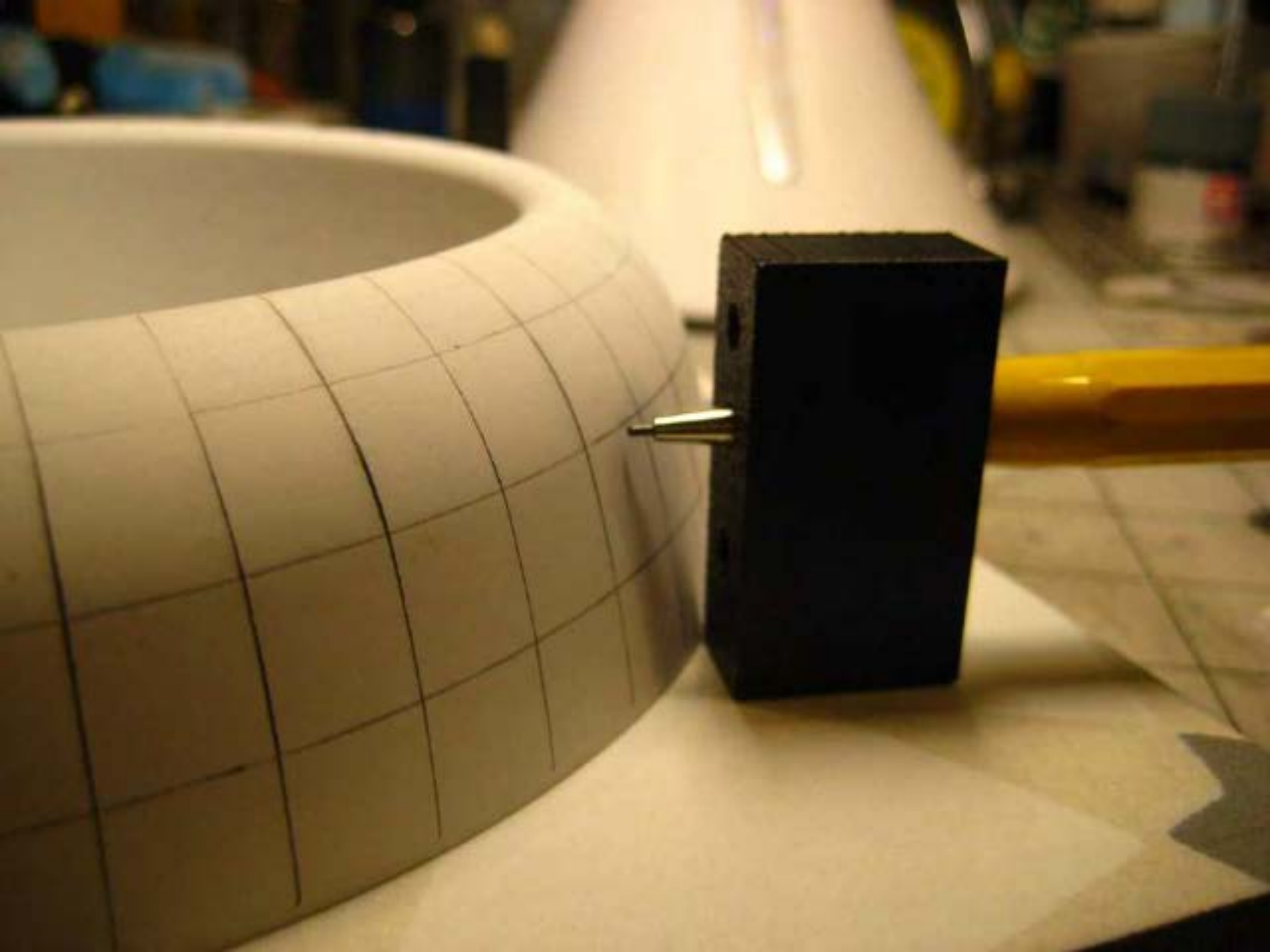
ع

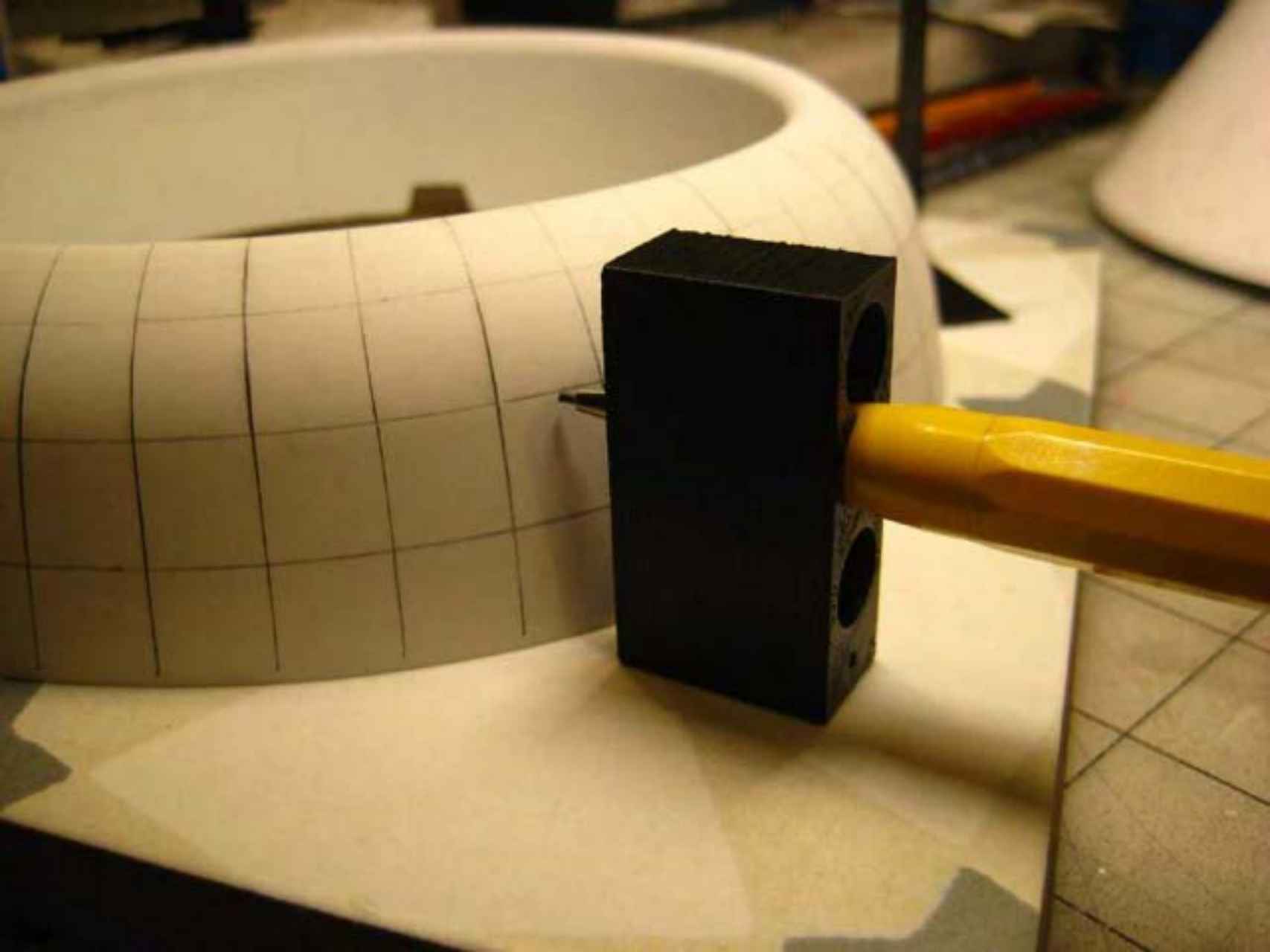
ع

ع

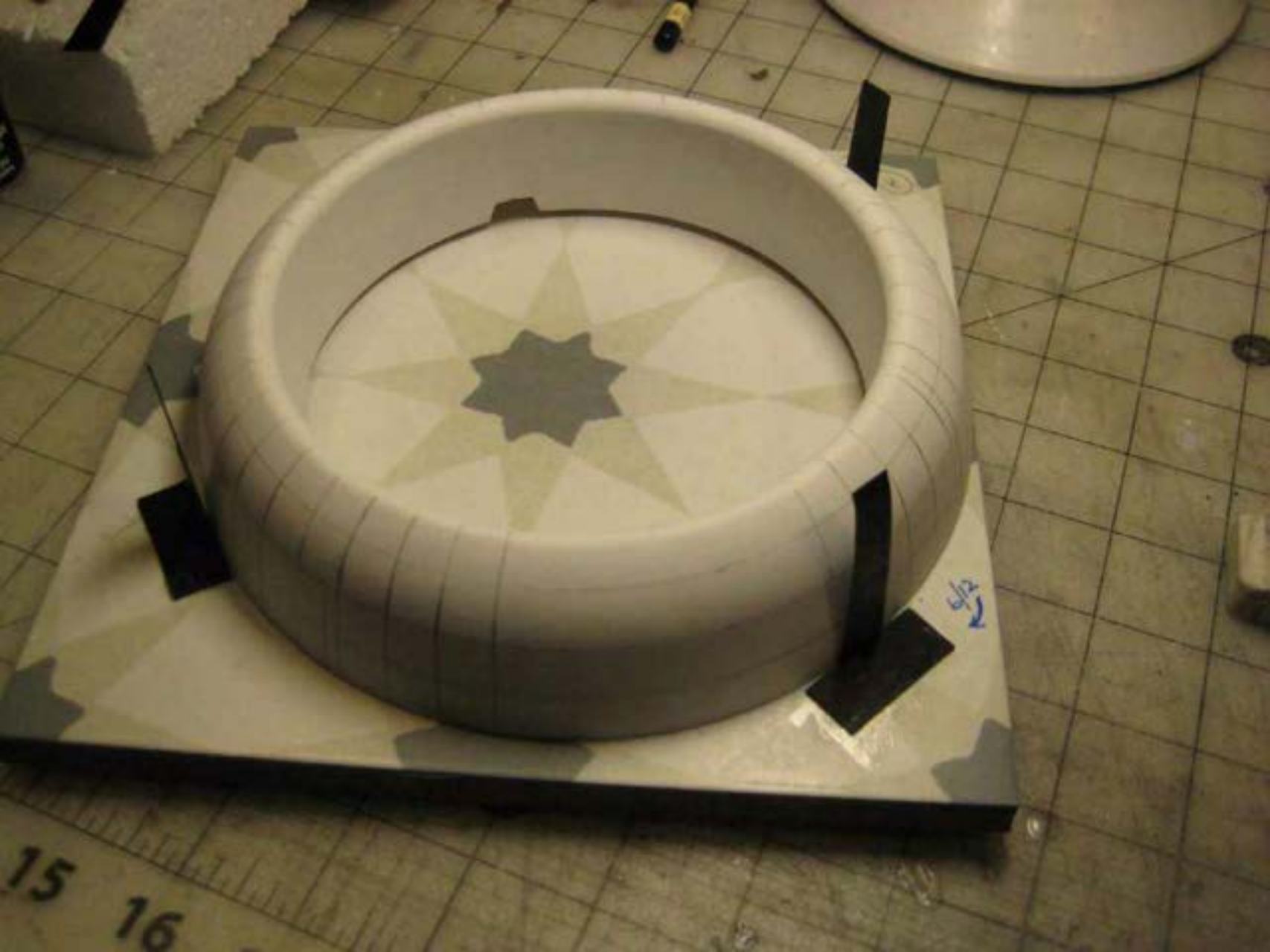
Robat



























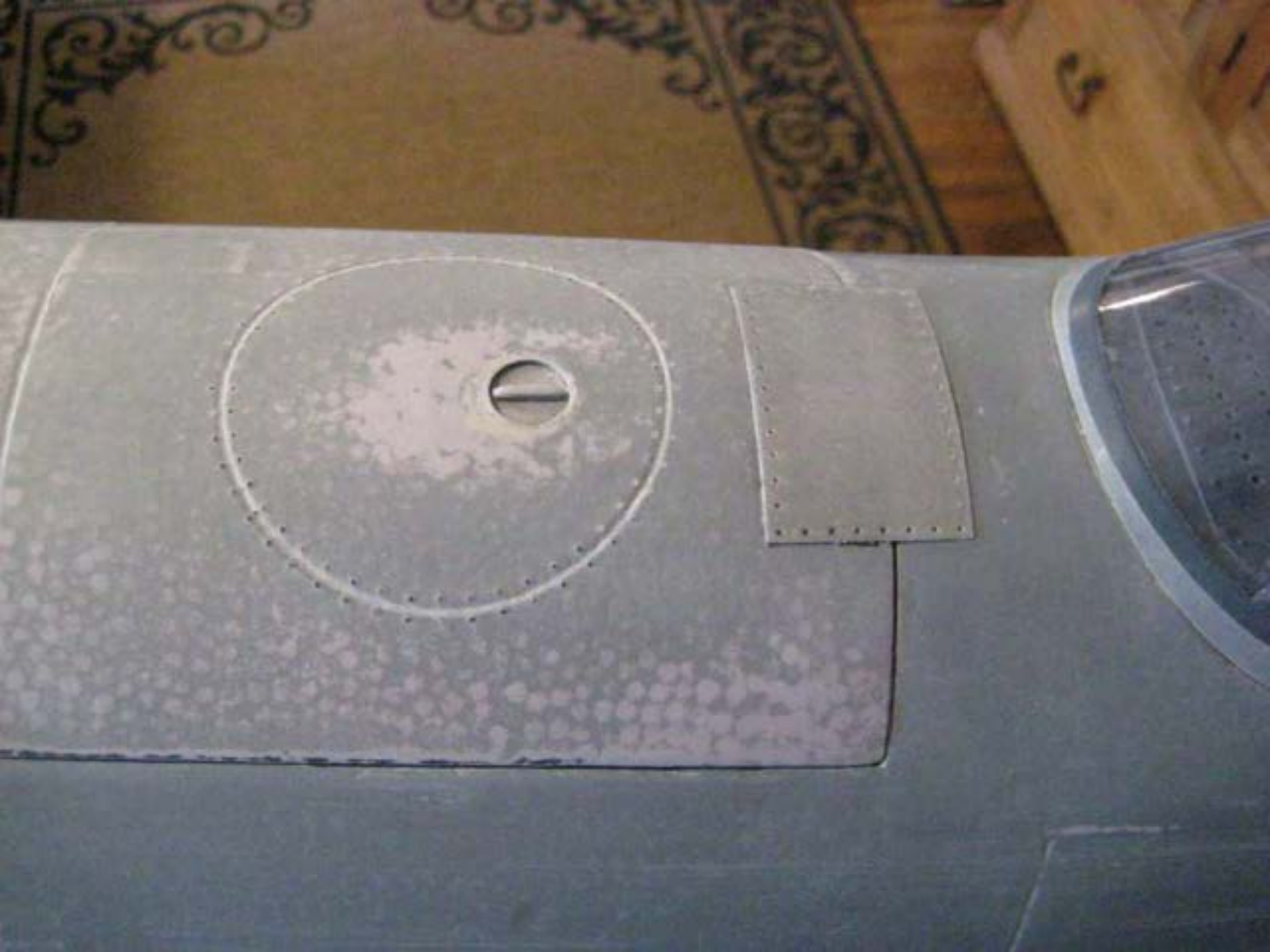








































































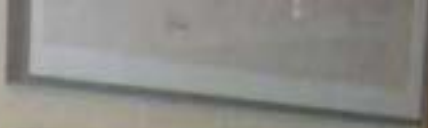
















































... of the ...

... of the ...

... of the ...



VEST, LIFE PRESERVER, TYPE B4  
SPECIFICATION No. 94-3135  
DATE OF ...  
STOCK ... 78200  
... 92-11200  
... L. PROD. CO.















PRESENTATION

MICHEL LEGRAND

Directed by JACK N. REDDISH

Color by DE LUXE

Case 15









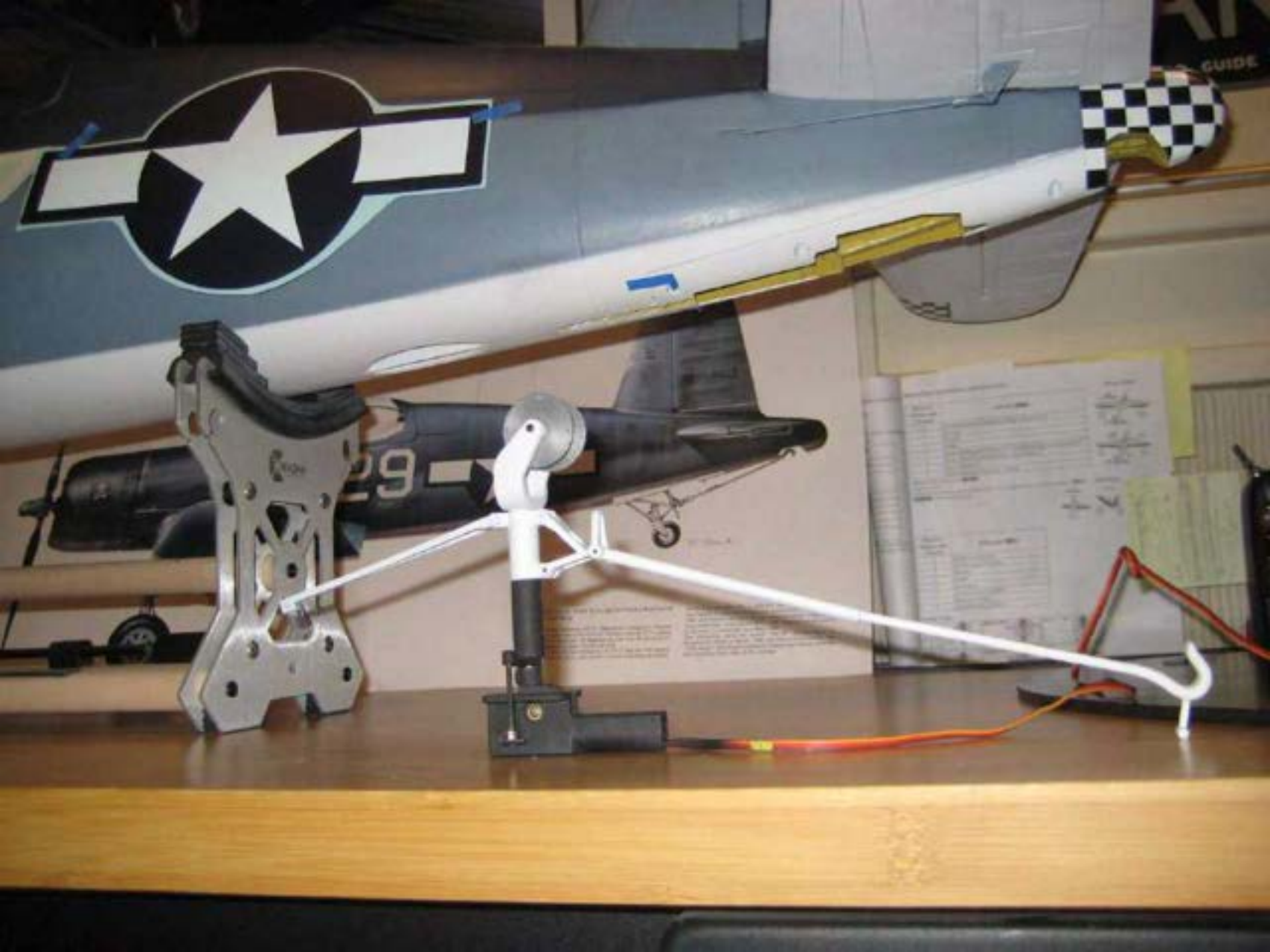


RELEASE  
↑  
LOCK

















ORIGINAL  
PRUSA i3

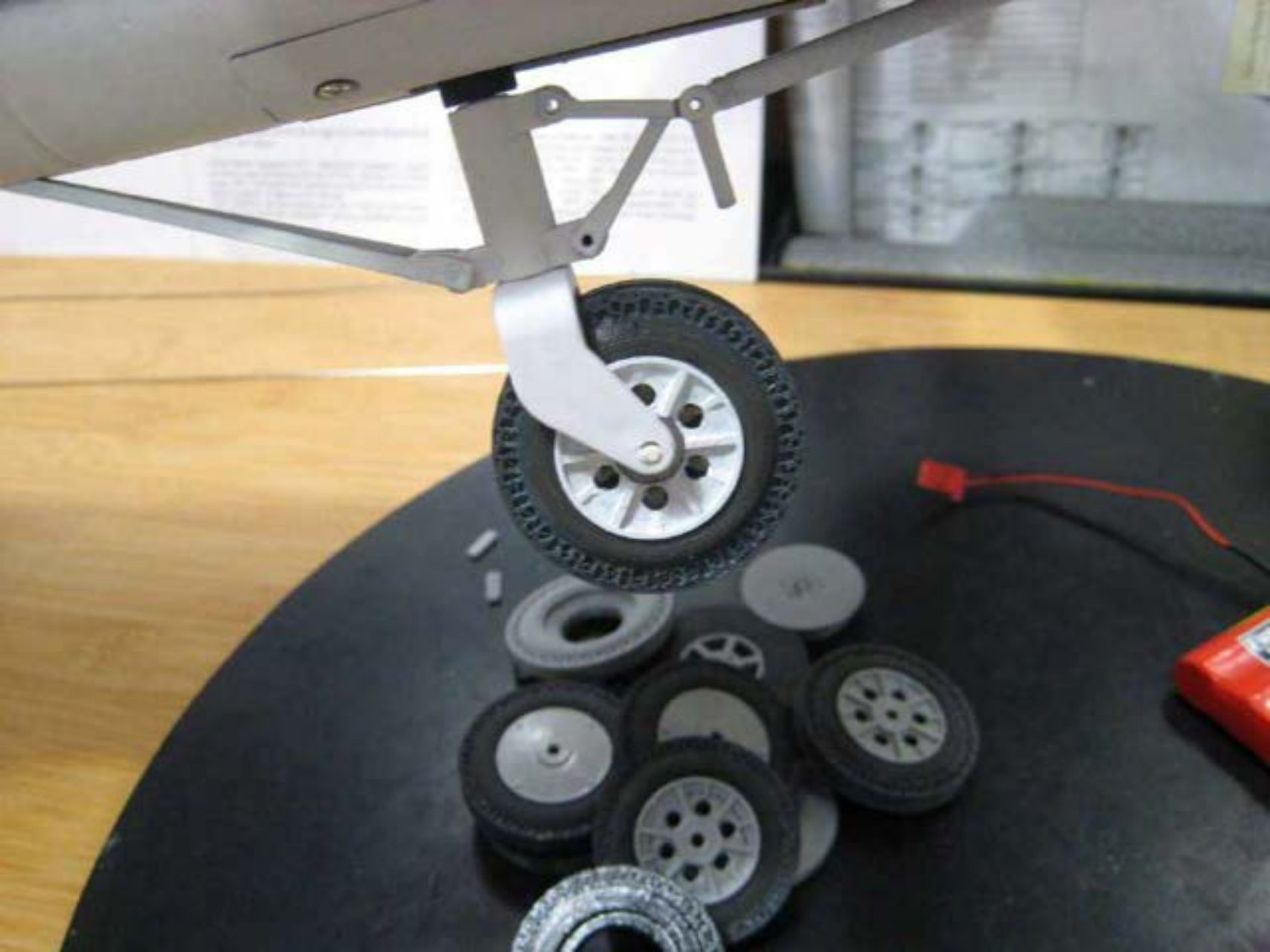
Extruder  
stepper motor

LDO  
918

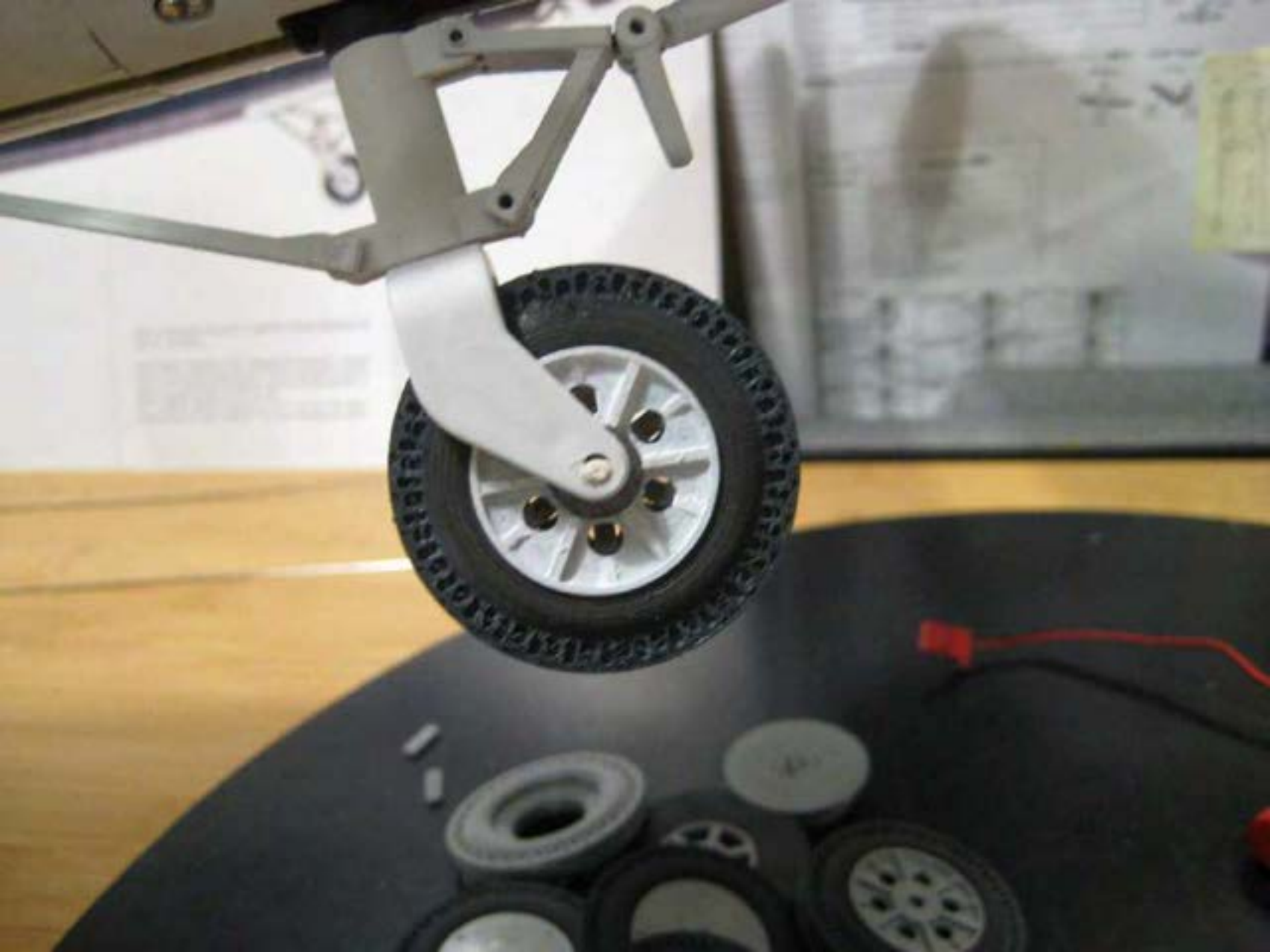
PRUSA  
RESEARCH

Print area

ORIGINAL PRUSA  
by













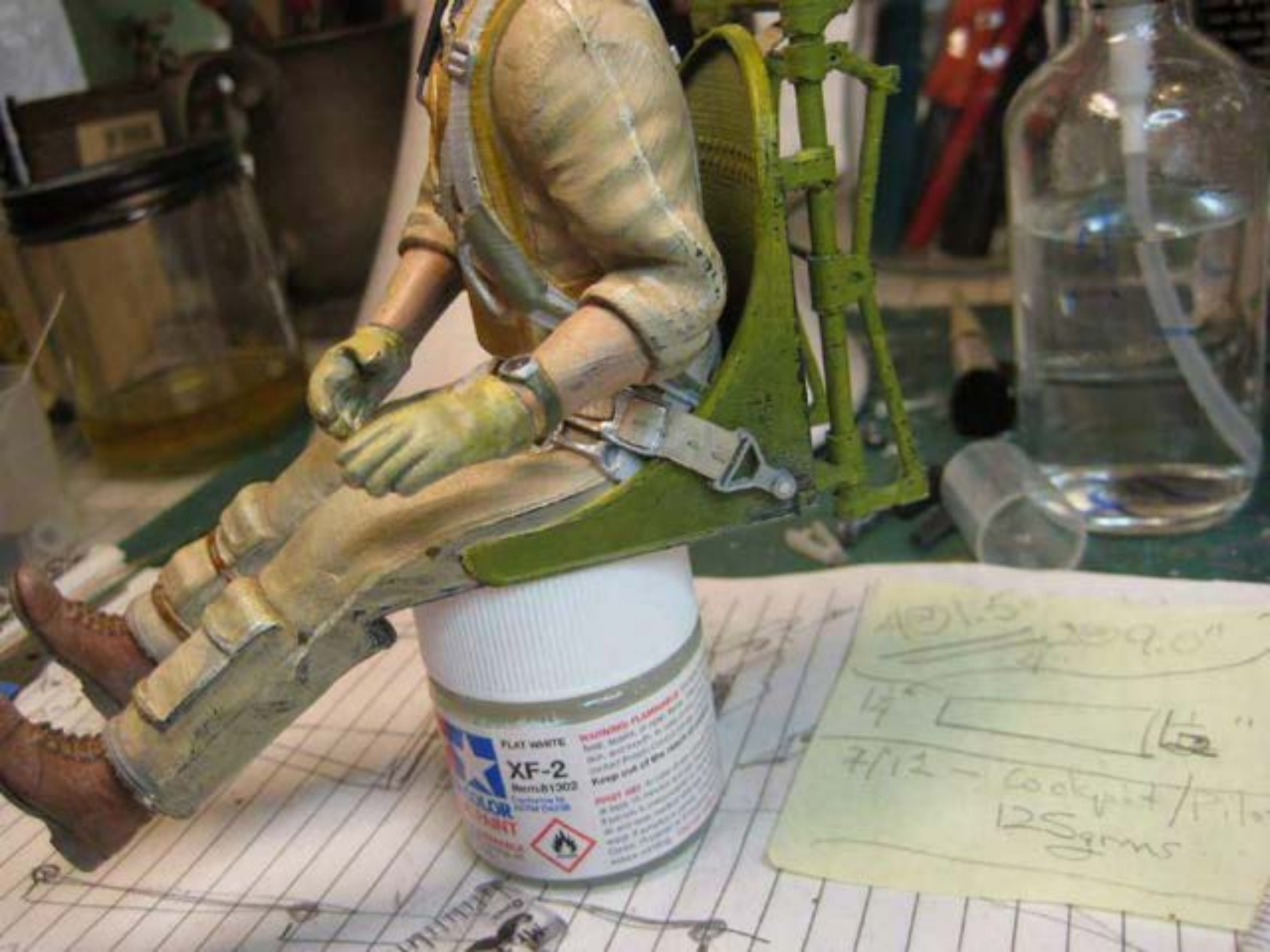


ORIGINAL PRUSA  
ORIGINAL PRUSA  
ORIGINAL PRUSA

1: 24.0P	Z: 0.197
2: 24.0P	→100%
Testor1	0→1
Prusa i3 MK3 0C	

ORIGINAL PRUSA





FLAT WHITE  
**XF-2**  
Item #1303  
WARNING: FLAMMABLE  
Keep out of the reach of children.  
Do not use in areas where smoking is prohibited.  
Do not use in areas where open flames are prohibited.  
Do not use in areas where hot surfaces are present.  
Do not use in areas where high voltages are present.  
Do not use in areas where high pressures are present.  
Do not use in areas where high speeds are present.  
Do not use in areas where high temperatures are present.  
Do not use in areas where high humidity is present.  
Do not use in areas where high altitudes are present.  
Do not use in areas where high latitudes are present.  
Do not use in areas where high longitudes are present.  
Do not use in areas where high elevations are present.  
Do not use in areas where high depressions are present.  
Do not use in areas where high slopes are present.  
Do not use in areas where high curvatures are present.  
Do not use in areas where high angles are present.  
Do not use in areas where high directions are present.  
Do not use in areas where high positions are present.  
Do not use in areas where high orientations are present.  
Do not use in areas where high attitudes are present.  
Do not use in areas where high azimuths are present.  
Do not use in areas where high zeniths are present.  
Do not use in areas where high nadirs are present.  
Do not use in areas where high horizons are present.  
Do not use in areas where high meridians are present.  
Do not use in areas where high parallels are present.  
Do not use in areas where high equators are present.  
Do not use in areas where high poles are present.  
Do not use in areas where high centers are present.  
Do not use in areas where high axes are present.  
Do not use in areas where high planes are present.  
Do not use in areas where high volumes are present.  
Do not use in areas where high surfaces are present.  
Do not use in areas where high edges are present.  
Do not use in areas where high corners are present.  
Do not use in areas where high curves are present.  
Do not use in areas where high arcs are present.  
Do not use in areas where high segments are present.  
Do not use in areas where high chords are present.  
Do not use in areas where high diameters are present.  
Do not use in areas where high radii are present.  
Do not use in areas where high circumferences are present.  
Do not use in areas where high perimeters are present.  
Do not use in areas where high areas are present.  
Do not use in areas where high volumes are present.  
Do not use in areas where high masses are present.  
Do not use in areas where high weights are present.  
Do not use in areas where high forces are present.  
Do not use in areas where high pressures are present.  
Do not use in areas where high stresses are present.  
Do not use in areas where high strains are present.  
Do not use in areas where high deformations are present.  
Do not use in areas where high displacements are present.  
Do not use in areas where high velocities are present.  
Do not use in areas where high accelerations are present.  
Do not use in areas where high momenta are present.  
Do not use in areas where high energies are present.  
Do not use in areas where high powers are present.  
Do not use in areas where high fluxes are present.  
Do not use in areas where high intensities are present.  
Do not use in areas where high densities are present.  
Do not use in areas where high concentrations are present.  
Do not use in areas where high fractions are present.  
Do not use in areas where high proportions are present.  
Do not use in areas where high ratios are present.  
Do not use in areas where high rates are present.  
Do not use in areas where high speeds are present.  
Do not use in areas where high frequencies are present.  
Do not use in areas where high periods are present.  
Do not use in areas where high wavelengths are present.  
Do not use in areas where high amplitudes are present.  
Do not use in areas where high phases are present.  
Do not use in areas where high frequencies are present.  
Do not use in areas where high periods are present.  
Do not use in areas where high wavelengths are present.  
Do not use in areas where high amplitudes are present.  
Do not use in areas where high phases are present.

401.5  
209.0  
14  
7/12 - Cockpit/Pilot  
125gms











VARNISH HD  
FOR COATS

XXL MATT

AMAYA COLOR  
ACRYLIC PAINT

401.5

47

7/12-6



A close-up photograph of a dark grey aircraft fuselage. On the left, a white arrow-shaped insignia is partially visible, pointing to the right. To its right, the number '0007' is painted in a white, multi-segmented, sans-serif font. The aircraft's surface shows some wear and a small circular hole. In the background, a blue and white striped fabric and a red object are visible.

0007



**DREWS** THE HOME OF THE ROYAL & ANCIENT GOLF CLUB

- QUEBEC
- INDIA
- JULIET
- ALSO
- LIMA
- VIR







76:24  
58:56  
11:31:47















Silk-Cut 3





ER FILMS PRESENTATION  
NER Music by MICHEL LEZARD  
E. REYEA Produced by JACK N. REDDEN  
R PRODUCTIONS FINANCING CO. by GILBERT  
A PICTURES RELEASE 80-100774





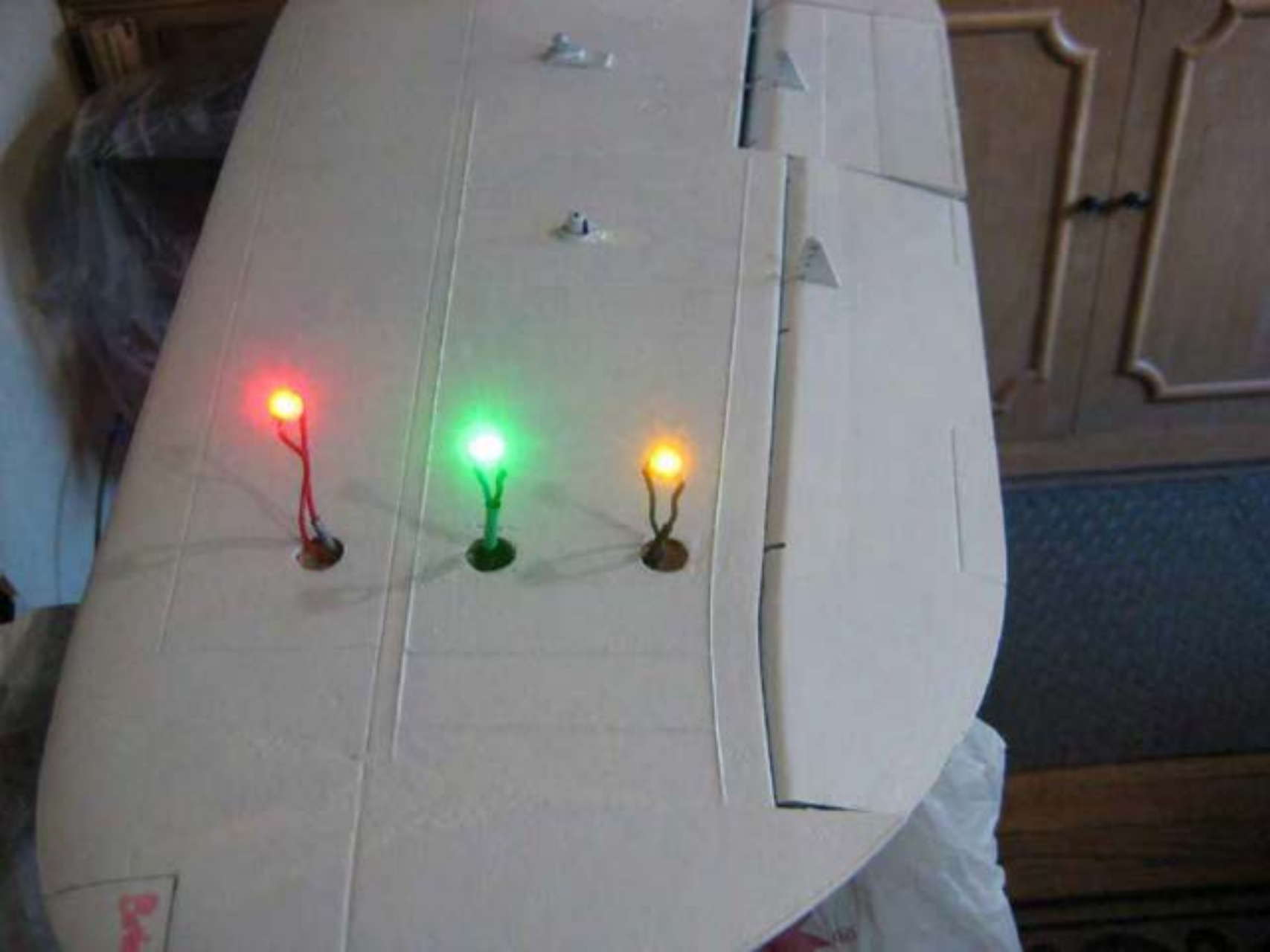




























Kram-it  
shop kramit.com















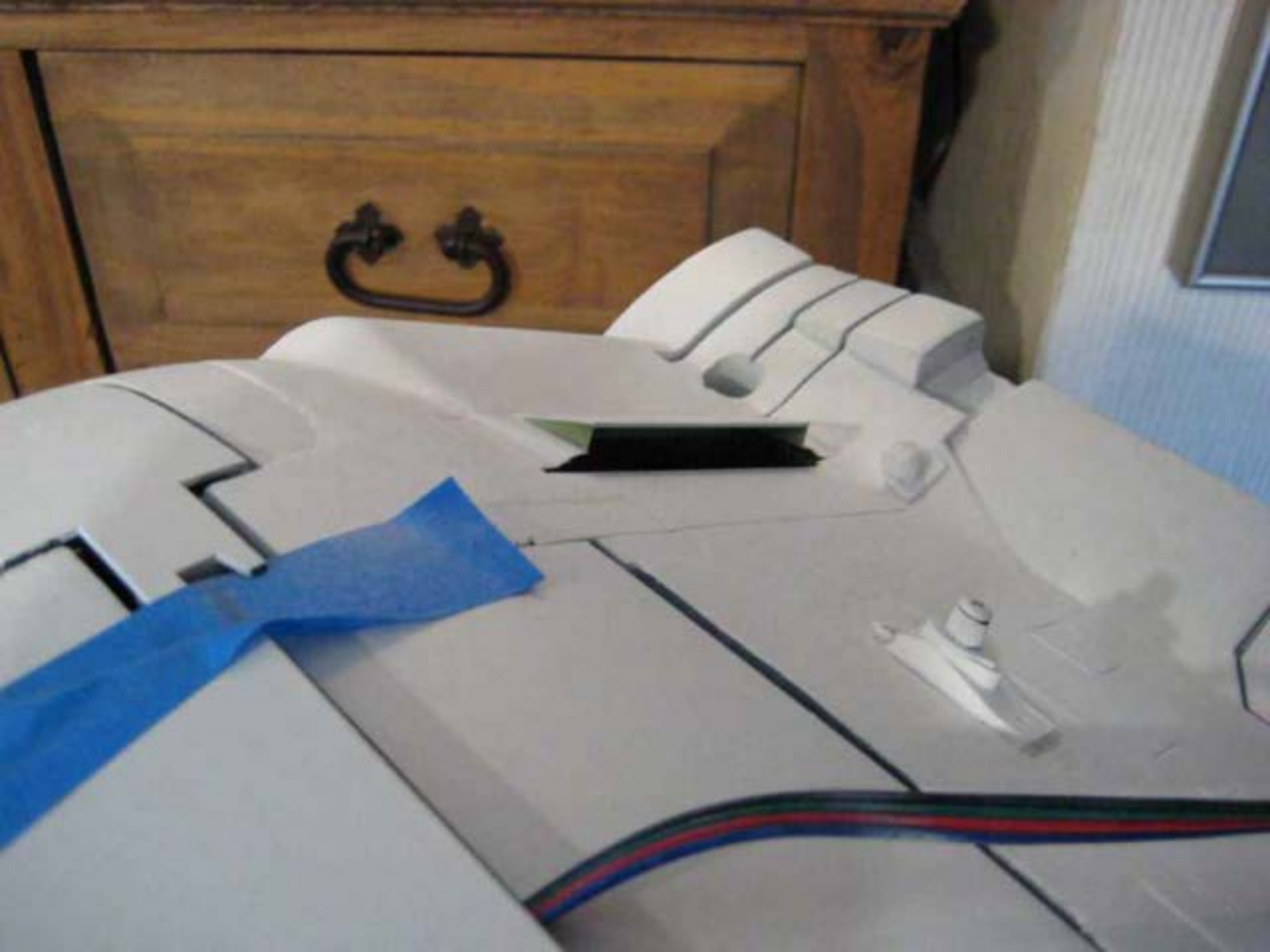










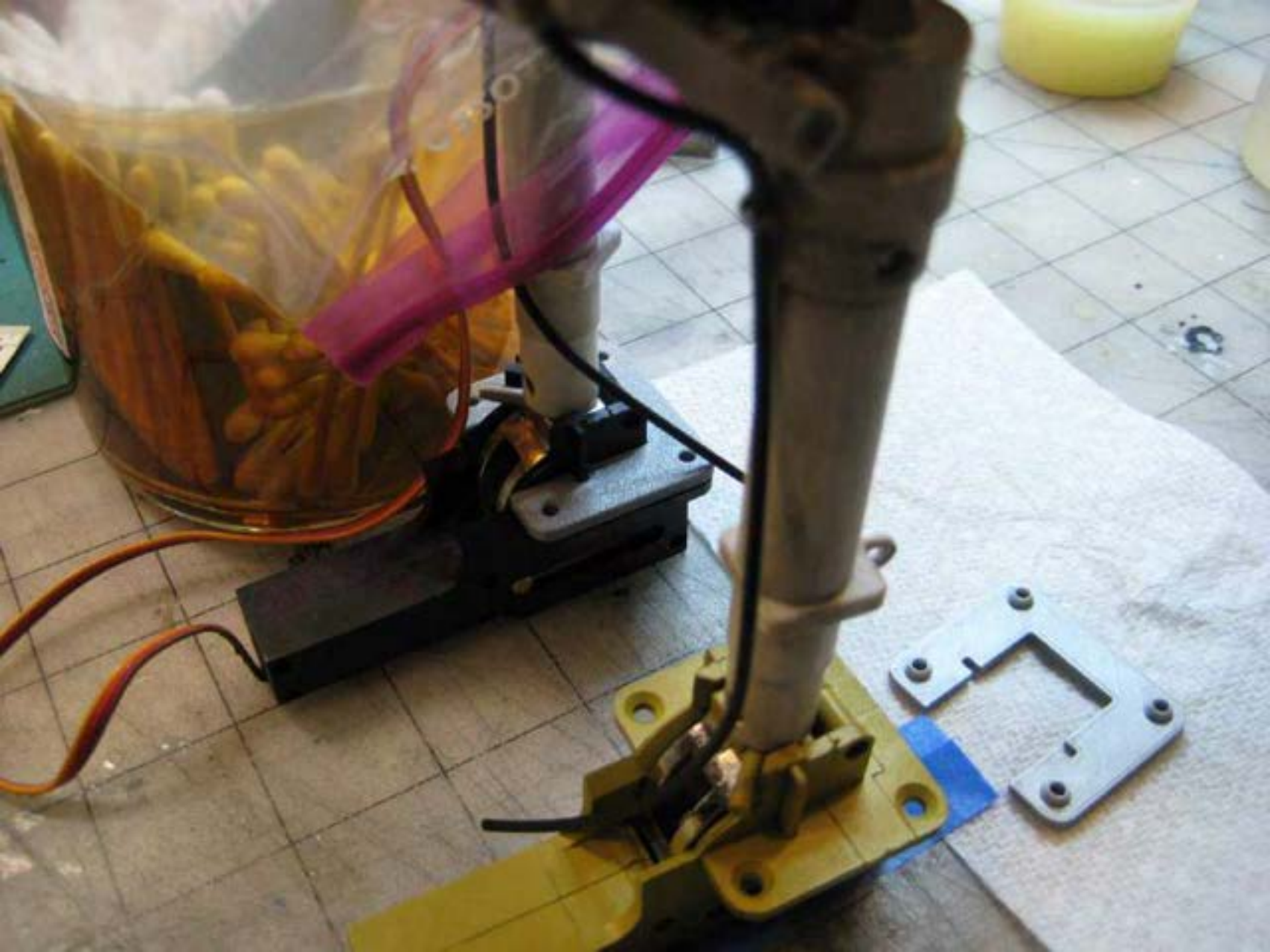
















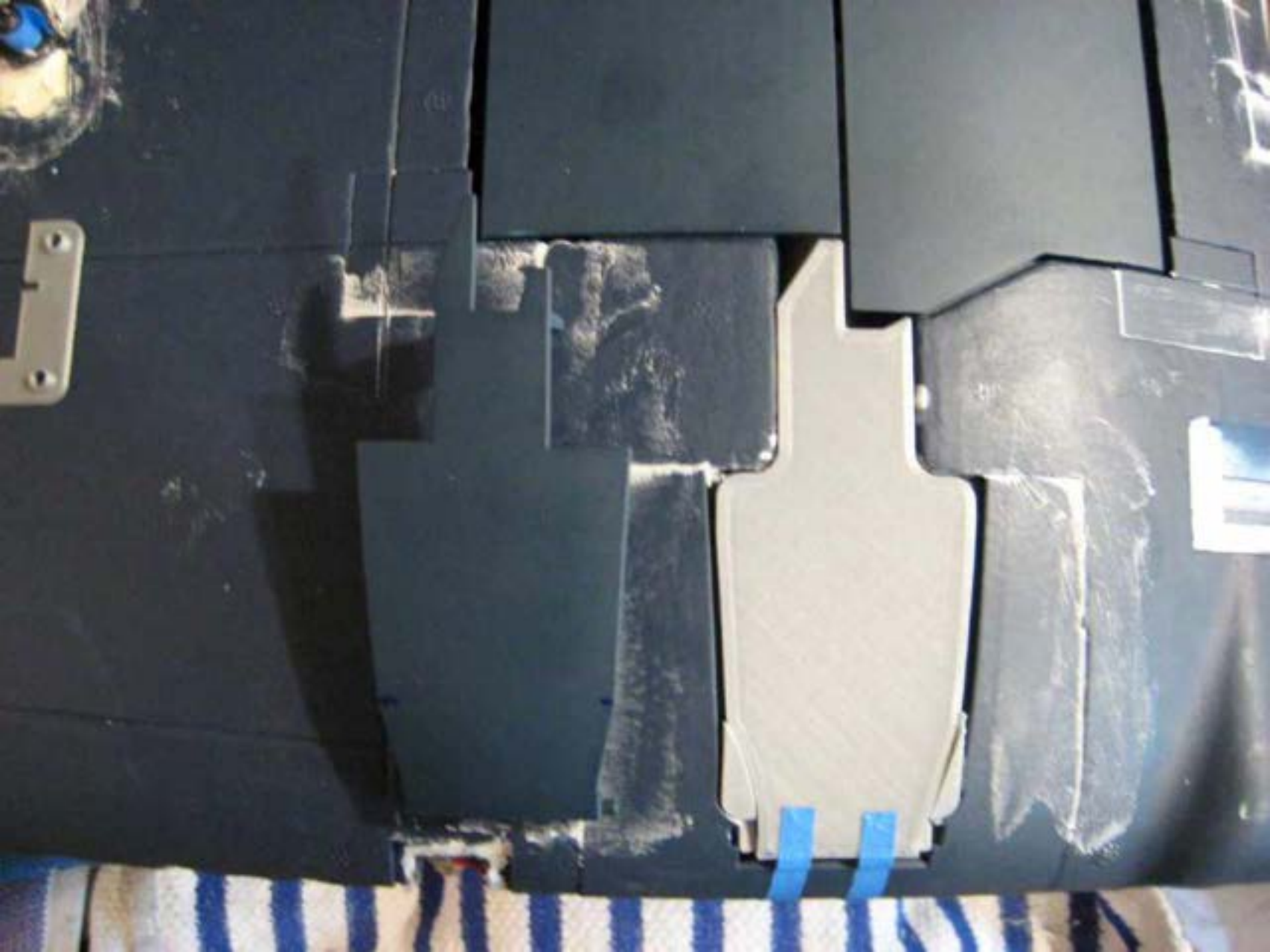


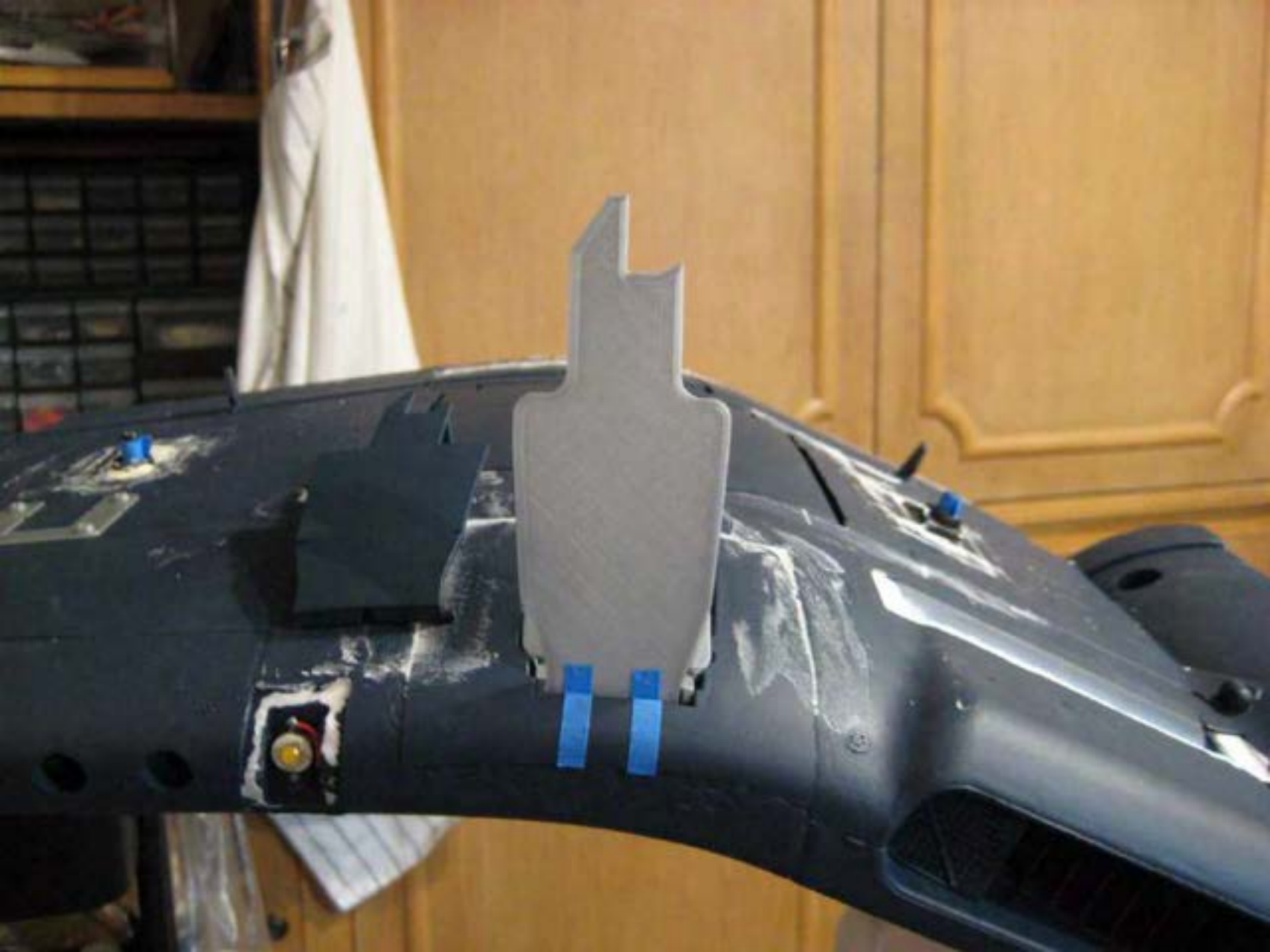




















007













007

007













007







0007





007





