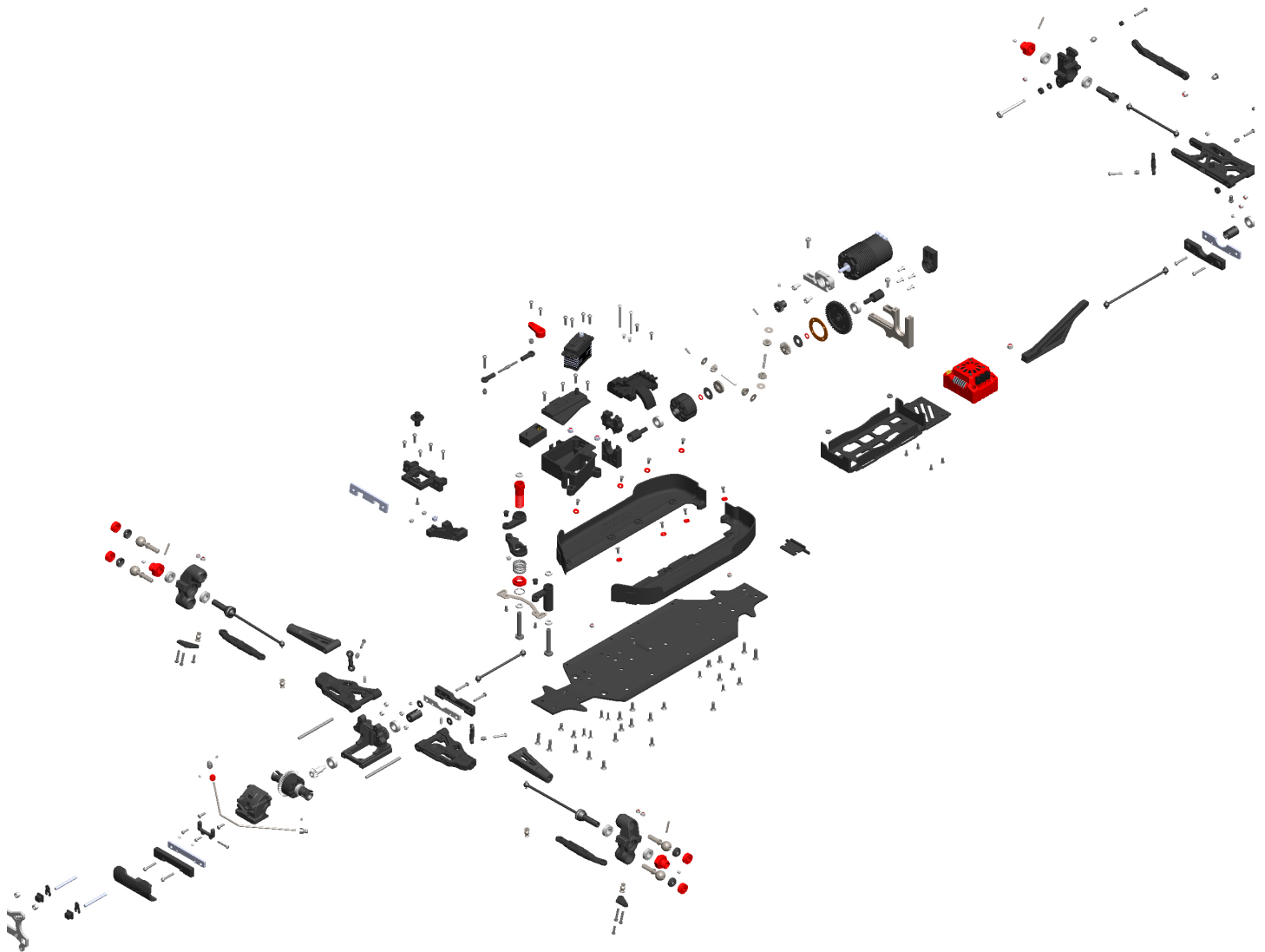




EXPLODED VIEWS

VUES ÉCLATÉES • EXPLOSIONSZEICHNUNGEN
• UITGEBREIDE ZICHTEN



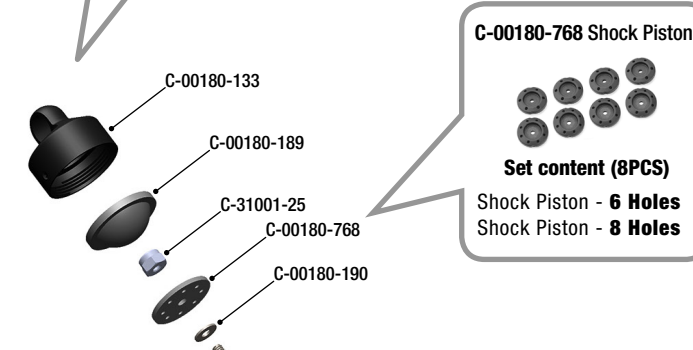
KRONOS XTR



C-00273 KRONOS XTR

Version: 2022-01

- Do not overtighten the Shock Cap to prevent deformation of the silicone Shock Bladder.
- Ne serrez pas trop le capuchon de l'amortisseur pour éviter la déformation de la membrane en silicone.
- Ziehen Sie die Dämpferabdeckung nicht zu fest an, um eine Verformung der Silikonmembran zu vermeiden.
- Draai de schokkap niet te strak aan om vervorming van het siliconenmembraan te voorkomen.



C-00180-768 Shock Piston



Set content (8PCS)

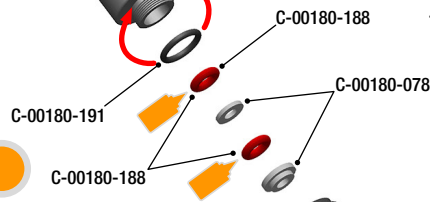
- Shock Piston - 6 Holes
- Shock Piston - 8 Holes

C-00180-166
(Front - Avant - Vorne - Voor)
C-00180-164
(Rear - Arrière - Ninten - Achter)

C-00180-137
(Front - Avant - Vorne - Voor)
C-00180-134
(Rear - Arrière - Ninten - Achter)

APPLY SILICONE OIL

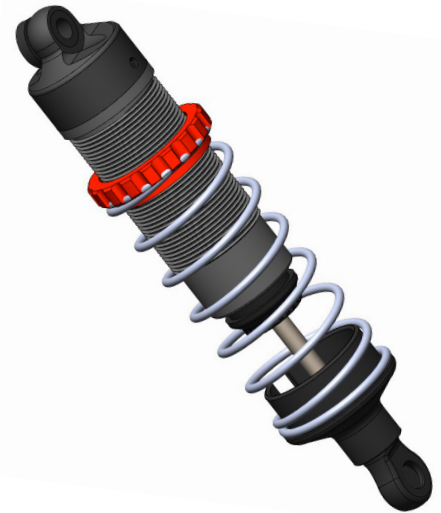
- Appliquez de l'huile silicone
- Silikonöl auftragen
- Breng siliconenolie aan



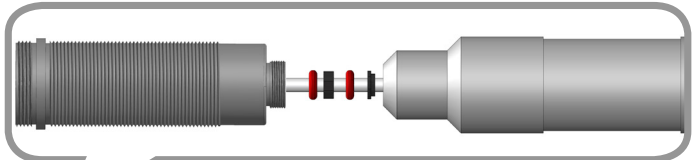
C-00180-138

C-00180-192

C-00180-136



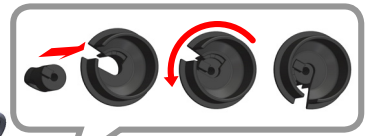
Place all small parts on a screwdriver (Ø3mm) and push them into the shock body. All parts will be properly aligned.



- Placez toutes les petites pièces sur un tournevis (Ø3mm) et poussez-les dans le corps de l'amortisseur. Toutes les pièces seront correctement alignées.
- Setzen Sie alle Kleinteile auf einen Schraubendreher (Ø3mm) und drücken Sie sie in den Dämpferkörper. Alle Teile werden richtig ausgerichtet.
- Plaats alle kleine onderdelen op een schroevendraaier (Ø3mm) en duw ze in de behuizing van de schokdemper. Alle onderdelen zullen goed uitgelijnd zijn.



C-00180-290 (Front - Avant - Vorne - Voor)
C-00180-287 (Rear - Arrière - Ninten - Achter)



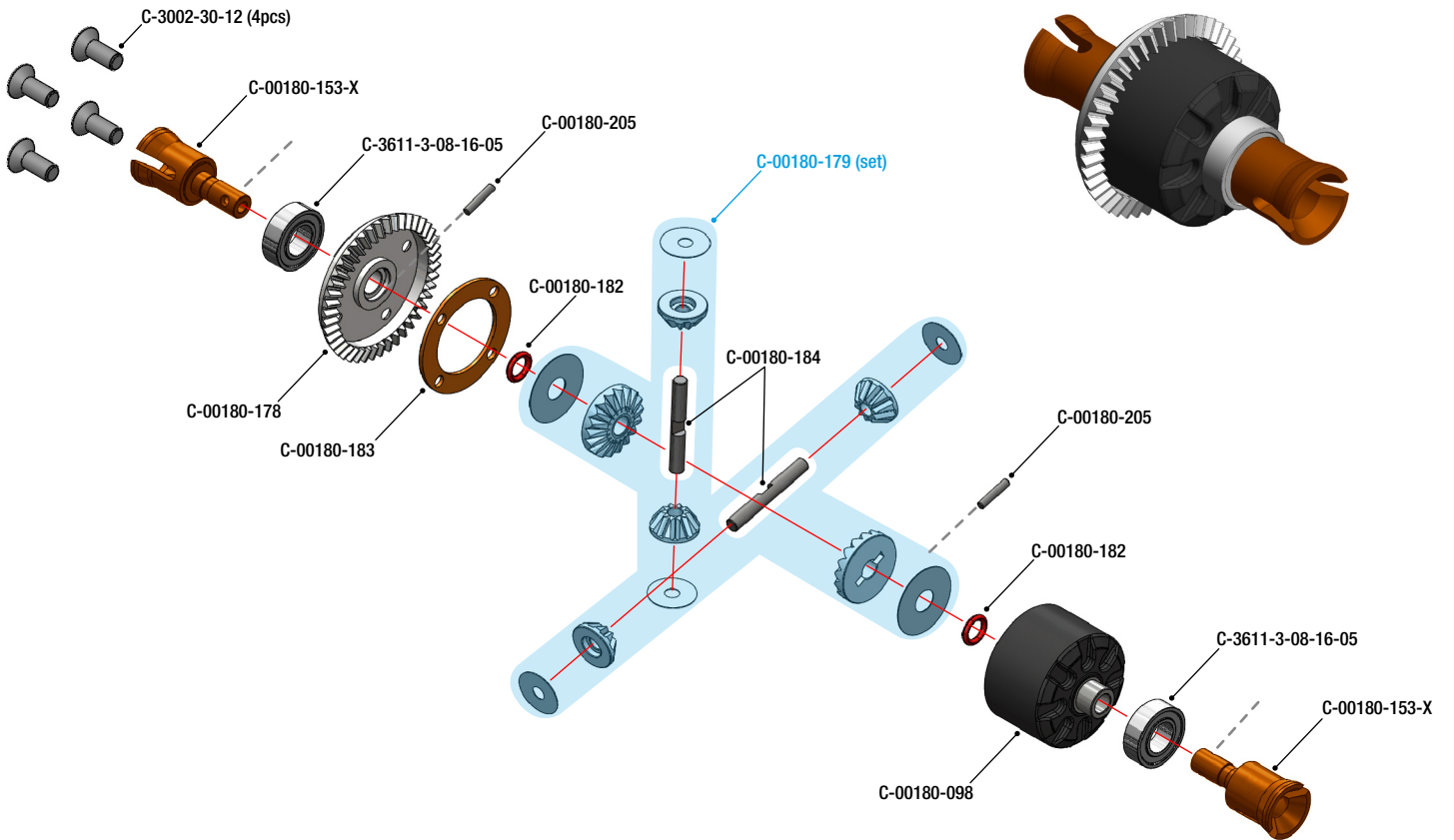
C-00180-029

C-00180-769 (Long)

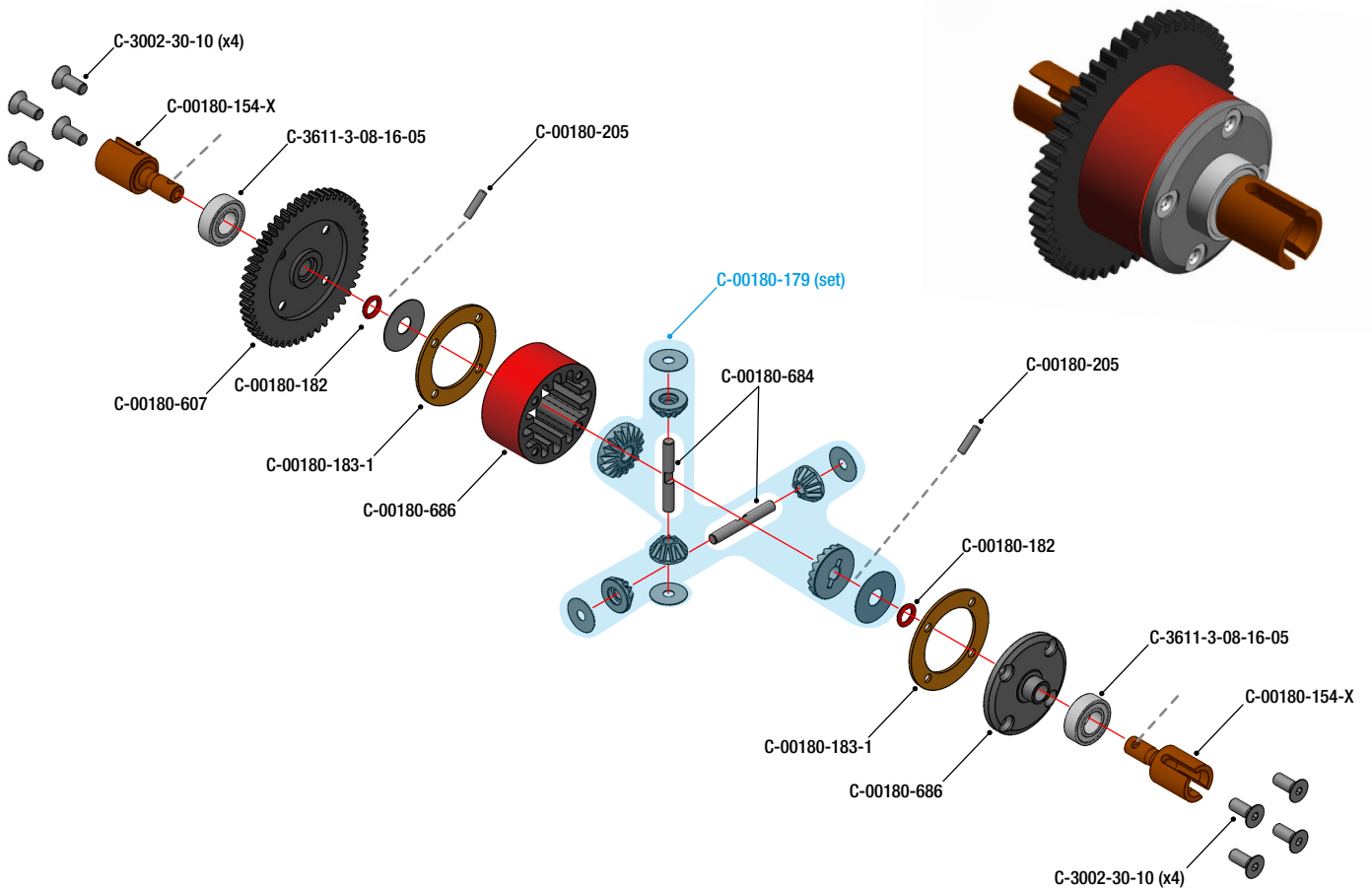
C-00180-149

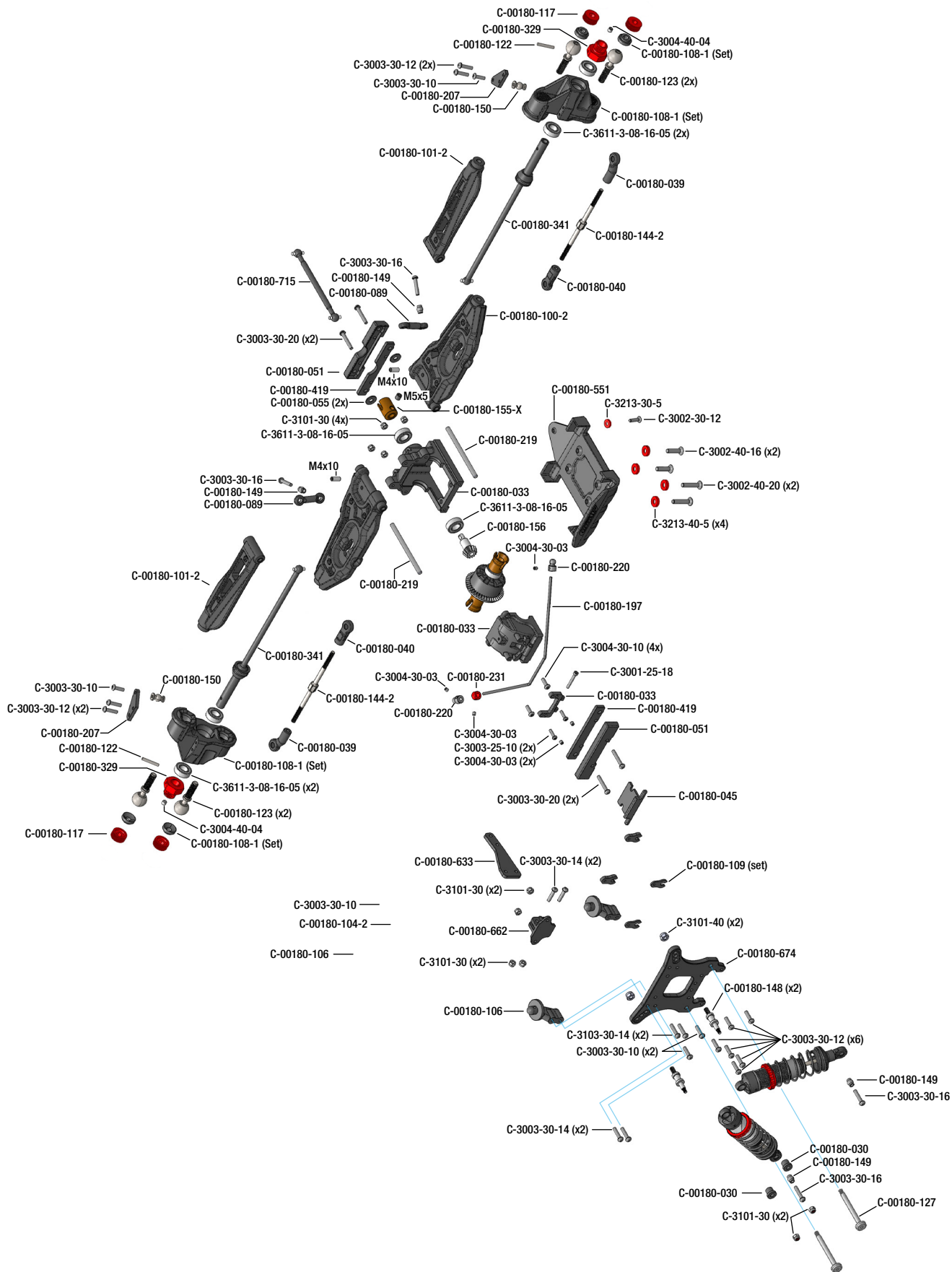
C-00180-770 (Short)

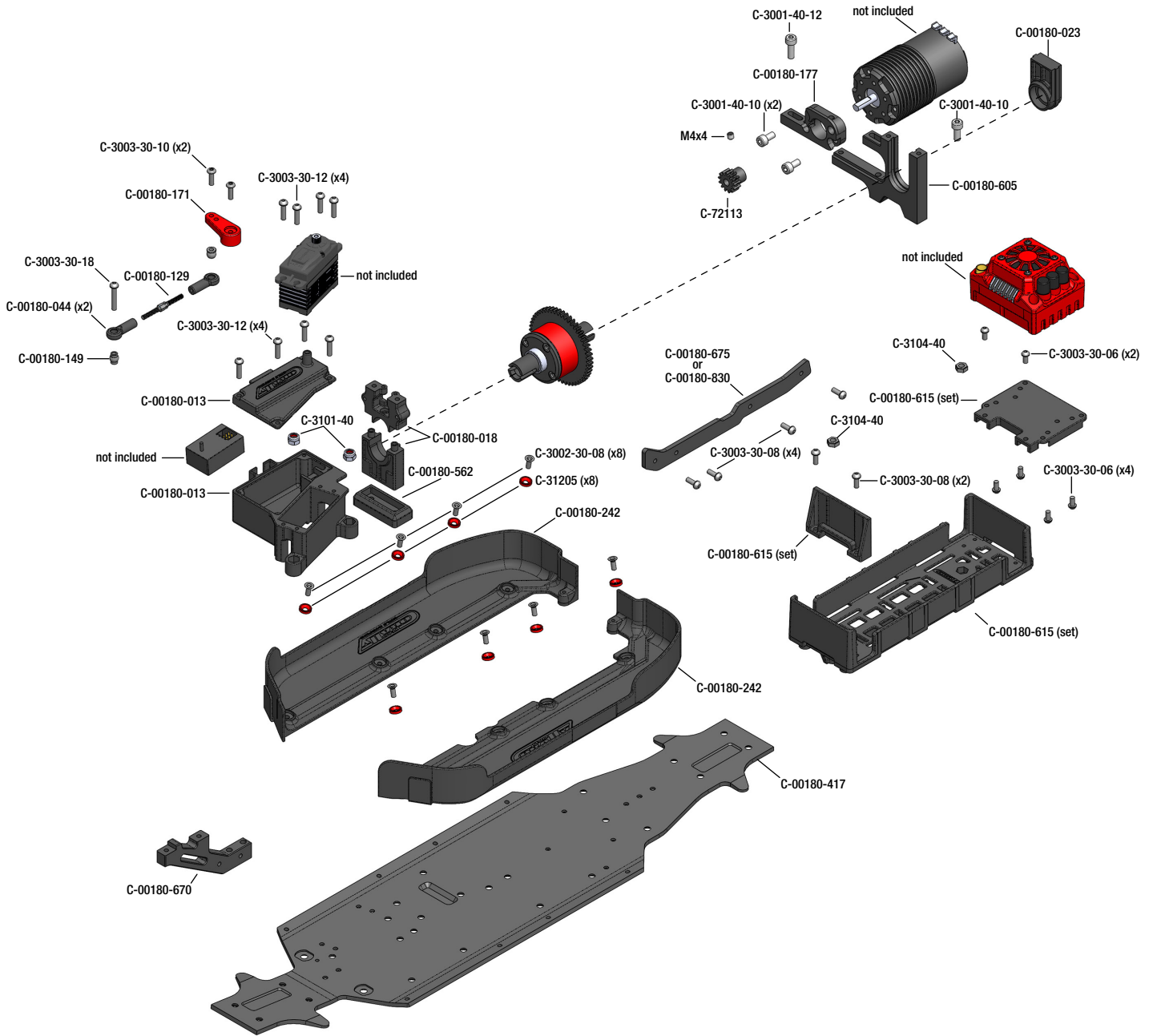
FRONT & REAR DIFFERENTIAL - DIFFÉRENTIEL AVANT ET ARRIÈRE - DIFFERENTIAL VORNE UND HINTEN - VOOR & ACHTER DIFFERENTIEEL



CENTRE DIFFERENTIAL - DIFFÉRENTIEL CENTRAL - ZENTRALDIFFERENTIAL - CENTERDIFFERENTIEEL

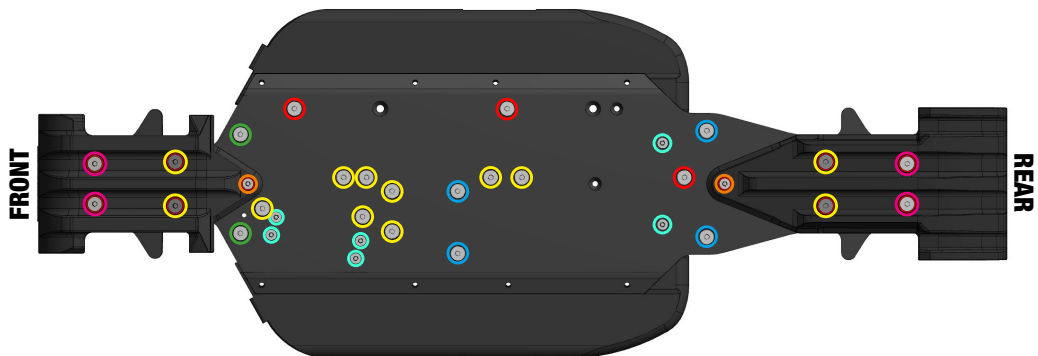


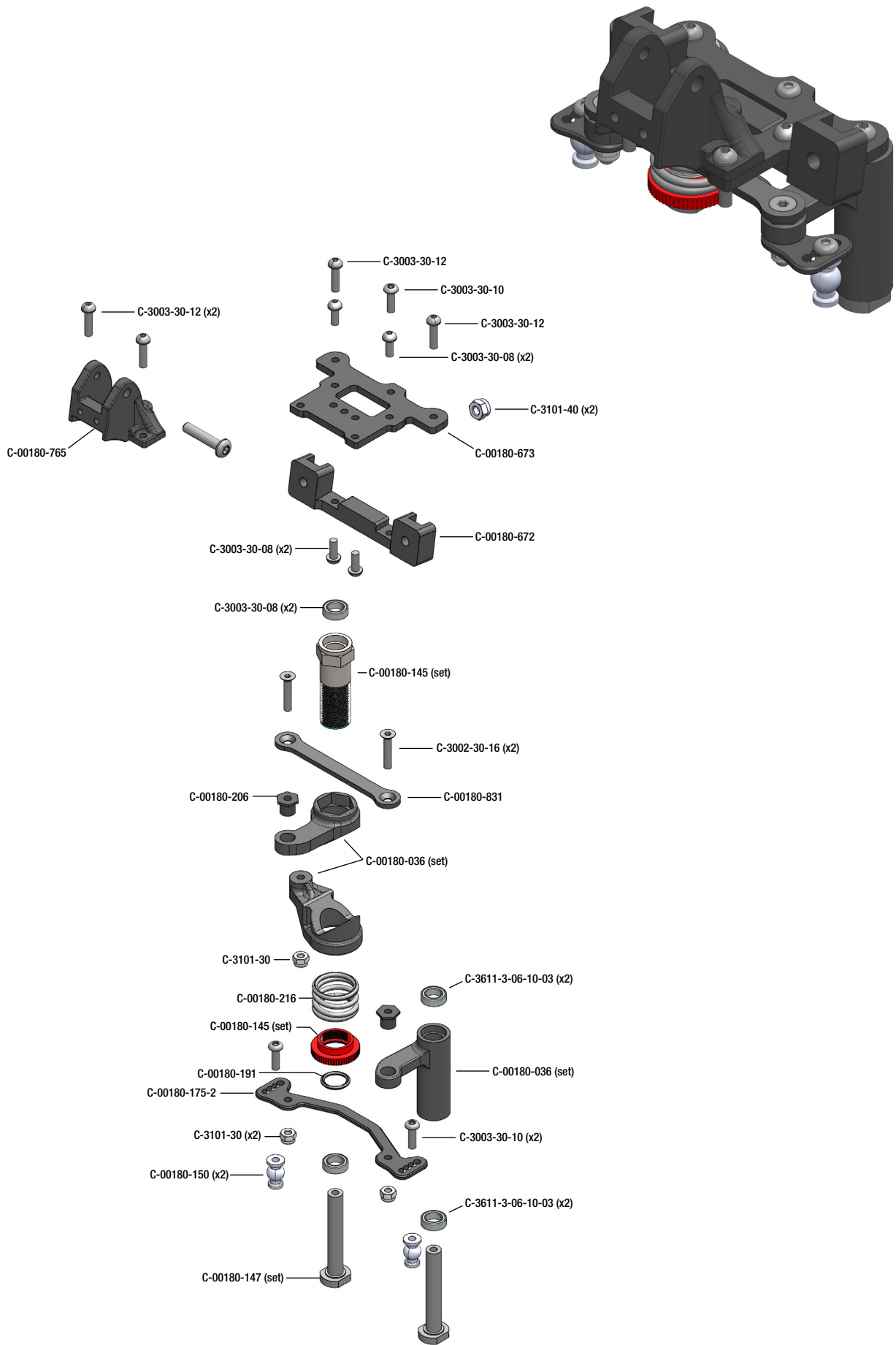


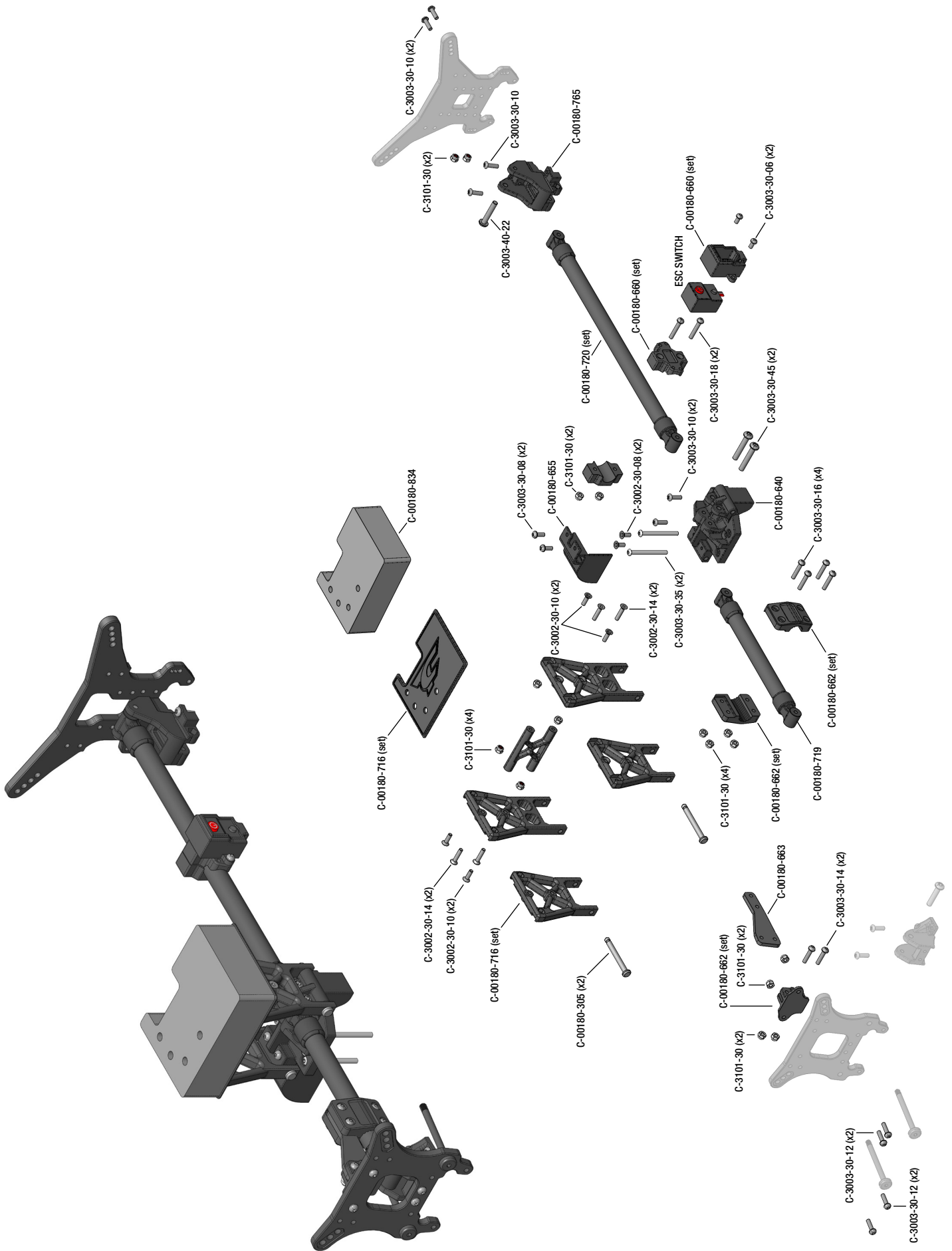


CHASSIS - SCREWS DESCRIPTION

- M3x10mm DIN7991
#C-3002-30-10
- M3x12mm DIN7991
#C-3002-30-12
- M4x10mm DIN7991
#C-3002-40-10
- M4x12mm DIN7991
#C-3002-40-12
- M4x14mm DIN7991
#C-3002-40-14
- M4x16mm DIN7991
#C-3002-40-16
- M4x20mm DIN7991
#C-3002-40-20







WWW.CORALLY.COM

TEAM
CORALLY

WORLD CHAMPIONS



WWW.CORALLY.COM

Team Corally is a registered trademark licensed to
JSP Group Intl bvba • Geelseweg 80 • B-2250 OLEN • Belgium
Tel: +32 14 25 92 94 • Info@corally.com