

## Fabrics & Leathers

FABRIC NAME

### Finnerty



Peony



Cumulus



Truffle



Turf

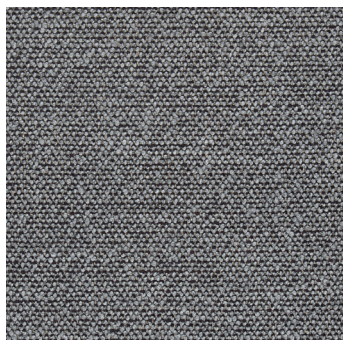


Brook

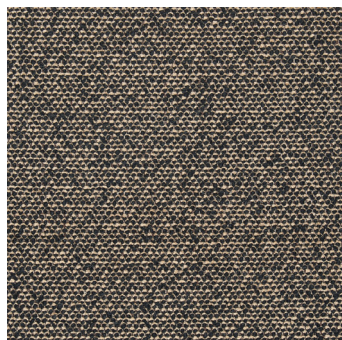
## Fabrics & Leathers

FABRIC NAME

### Aberdeen Avenue



Ash



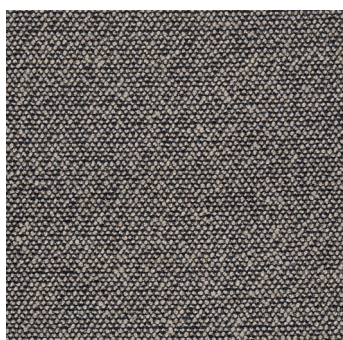
Driftwood



Dune



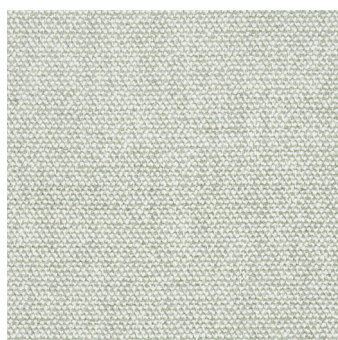
Golden Hour



Pebble



Shell



Willow

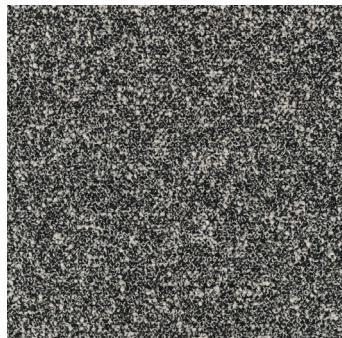
## Fabrics & Leathers

FABRIC NAME

Place de l'Étoile



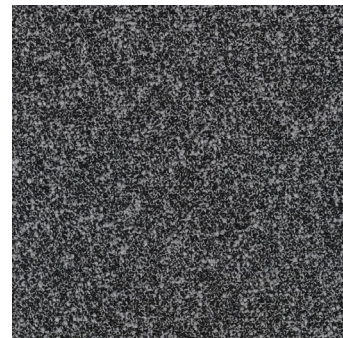
Calaverite



Magnesium



Lead



Pewter



Rhodium

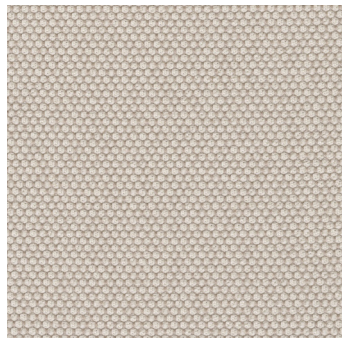
## Fabrics & Leathers

FABRIC NAME

### Geneva Avenue



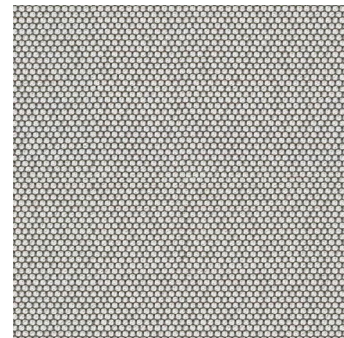
Kristall



Calla



Anthracite



Mirror

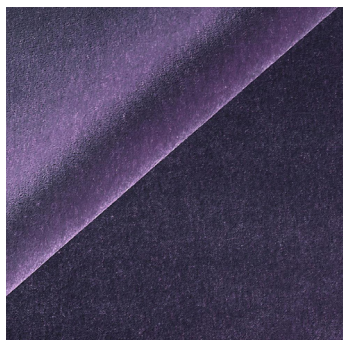


Delft

## Fabrics & Leathers

FABRIC NAME

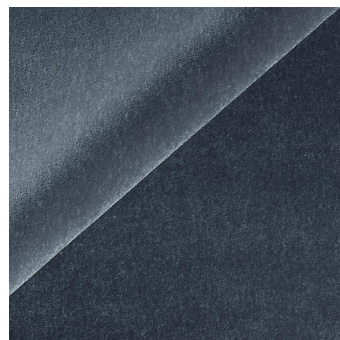
Bağdat Caddesi



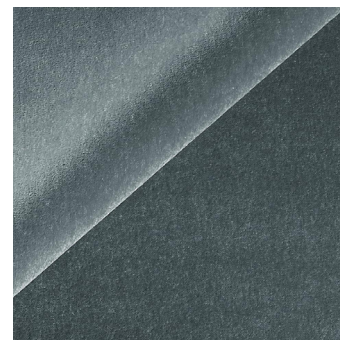
Amethyst



Blue Topaz



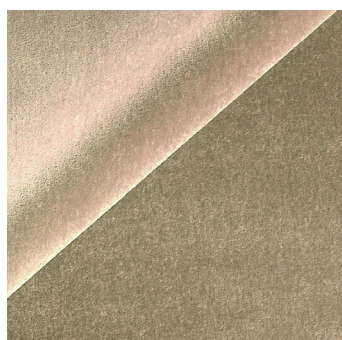
Grey Sapphire



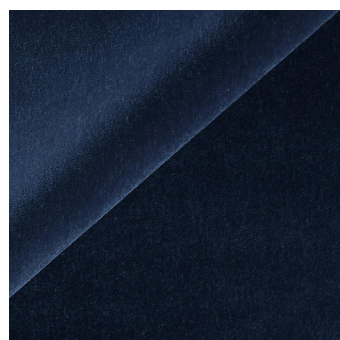
Moonstone



Onyx



Pyrite



Tanzanite

## Fabrics & Leathers

FABRIC NAME

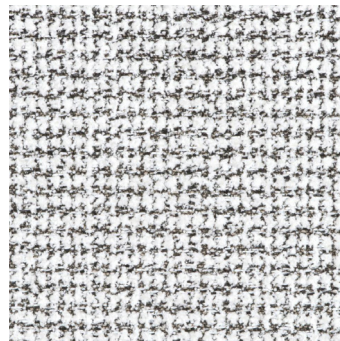
Rue Cambon



Rosé



Oise

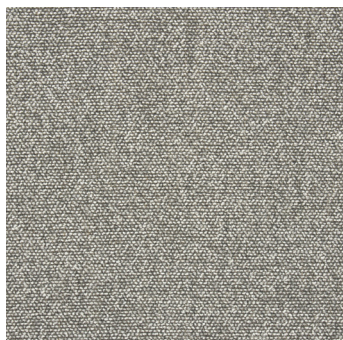


Noir

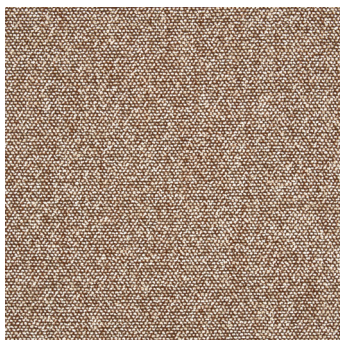
## Fabrics & Leathers

FABRIC NAME

### Sumach Street



Stone



Earth



Forest



Alpine



Granite

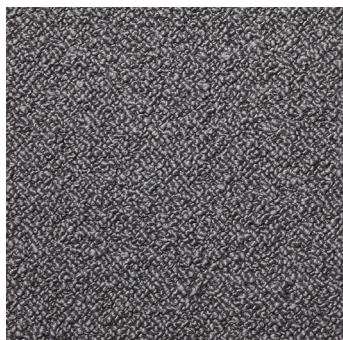


Limestone

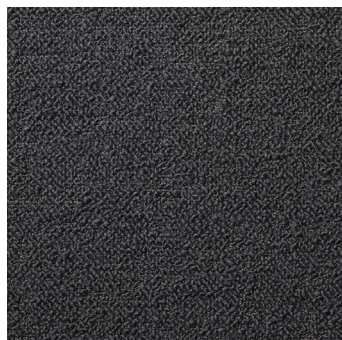
## Fabrics & Leathers

FABRIC NAME

**Dermott Place**



Anthracite



Black



Ivory



Perla



## Fabrics & Leathers

FABRIC NAME

**Amelia Street**



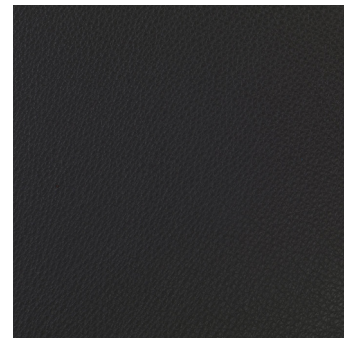
Anthracite



Beige



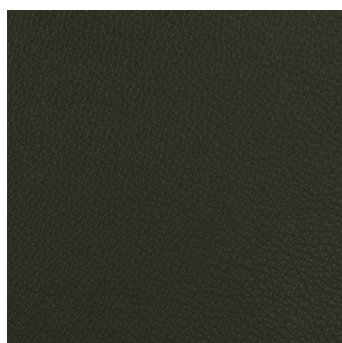
Black



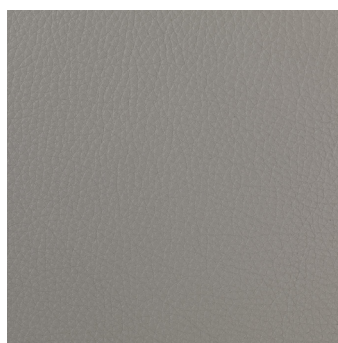
Clay



Dark Brown



Olive



White Pepper

# Fabrics & Leathers

FABRIC NAME

## Ontario Street



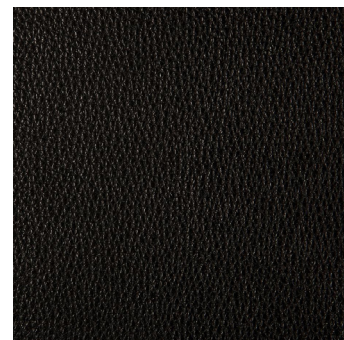
Rosewater



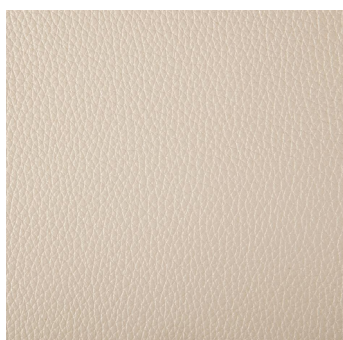
Prune



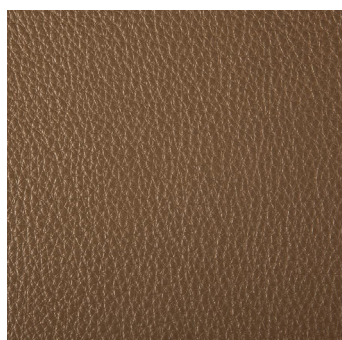
Saddle



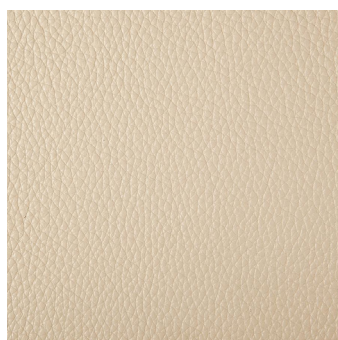
Black



Pewter



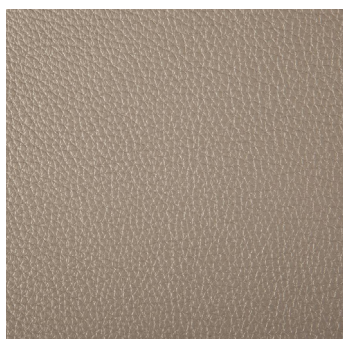
Espresso



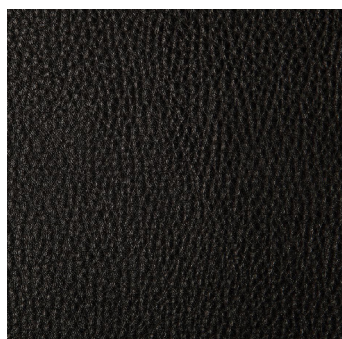
Clay



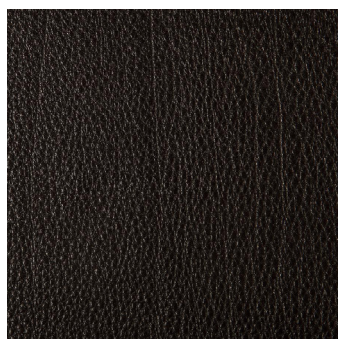
Cream



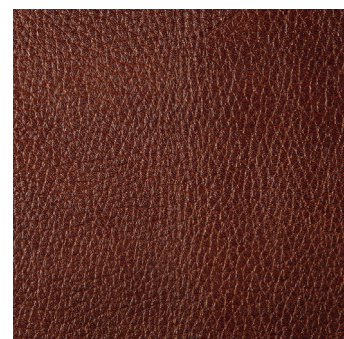
Taupe



Dark Grey



Ocean Blue



Rustic

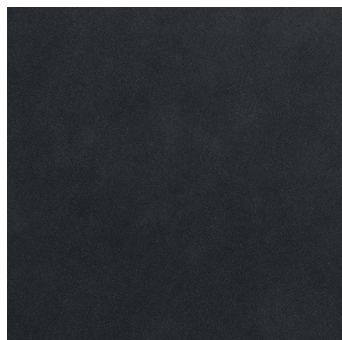
# Fabrics & Leathers

FABRIC NAME

Seaton Street



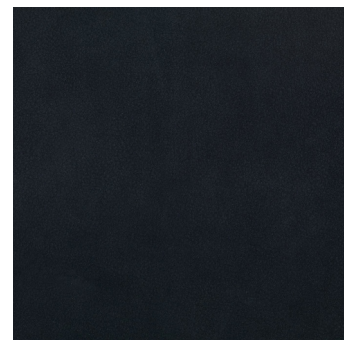
Anthracite



Blue Grey



Cinnamon



Deep Blue



Elephant Grey



Forest Green



Light Brown



Nutmeg



Sand