



LiteChaser Pro

iPhone® 14 Pro/Pro Max.



What's Included

Kits / Bundles.

CAGE PLATFORM KITS_

Filmmaking Kit

VND3-5 Filter (*includes hard-case + defender*) | VND6-7 Filter (*includes hard-case + defender*) | Aluminum Cage
Dual 1/4"-20 Handles | Bluetooth Shutter Remote

Dual Kit

Aluminum Cage | Dual 1/4"-20 Handles | Bluetooth Shutter Remote

Base Kit

Aluminum Cage | 1/4"-20 Handle | Bluetooth Shutter Remote

MINIMALIST CASE PLATFORM KITS_

Filmmaking Kit

VND3-5 Filter (*includes hard-case + defender*) | Minimalist Case | Grip | Bluetooth Shutter Remote

Base Kit

Minimalist Case | Grip

What's Included

Individual Components.

Filters

Filter | Hard-Case | Defender Lens Cover | Microfiber Cloth

Aluminum Cage

Cage | Rubber Sleeve | Wrist Tether

Handle *[Cage]*

Handle | Hex Tool

Minimalist Case

Case | Wrist Tether

Grip *[Case]*

Grip

Bluetooth Shutter Remote

Bluetooth Shutter Remote | Hex Tool | CR2032 Battery

Cage Installation

Attaching the cage to your iPhone 14.



INSTALLATION

Step 1:

First, install the rubber sleeve onto the iPhone 14 Pro/Pro Max.

Step 2:

Open the two gold latches on the cage by sliding the black sliders towards the bottom of the cage while rotating the gold latches to the open position.

Step 3:

Next, align the phone with the cage opening and insert the left side of the phone under the two tabs on the cage.

Step 4:

Lower the right side into the cage ensuring the gold latches are in the open position.

Step 5:

Once the phone is seated properly, close the two gold latches to lock the phone into the cage. Visually check that the red warning lines are not visible to ensure the cage is properly locked.

REMOVAL

Step 1:

Open the two gold latches on the cage by sliding the black sliders towards the bottom of the cage and rotating the gold latches to the open position. Lift the right side of the phone then the left to remove from the cage.

Handle Installation

Attaching the handle(s) to the cage.



INSTALLATION

Step 1:

Choose the desired mounting style and location on the cage.

Step 2:

Align the handle's 1/4"-20 male thread with the cage's 1/4"-20 female slot and tighten by rotating the gold knob clockwise.

Step 3:

Adjust the handle slot location using the integrated hex tool (located on the bottom of the handle) if needed.

REMOVAL

Step 1:

To detach, unthread the gold knob counterclockwise.

Grip Installation

Attaching the grip to the case.



INSTALLATION

Step 1:

Place phone in the LiteChaser Pro 14 Pro/Pro Max case.

Step 2:

Choose desired mounting side (front or back of the case).

Step 3:

Using your thumb, slide the gold switch upwards, then push down to release locking ends of the grip.

Step 4:

Place the grip around the phone case, aligning the ends with one of the four predetermined rail system grooves located on the side of the case and release the grip switch.

Step 5:

Ensure the locking ends of the grip are secure by squeezing the ends of the grip. Make sure the grip is level and tight against the case and double check the red indicator isn't showing on the grip switch before use.

REMOVAL

Step 1:

To remove, repeat step 3 and detach.

Bluetooth Shutter Installation

Attaching the bluetooth shutter to the handle or grip.



INSTALLATION

Step 1:

Flip open the rubber weather-proof flap located at the top of the Bluetooth Shutter to access hex bolt.

Step 2:

Align hex bolt with the 1/4"-20 thread on the grip (*remove plastic cover on grip*) and tighten down securely into position.

REMOVAL

Step 1:

To remove, reverse steps 1 and 2 listed above.

OPERATION

Step 1:

Switch the toggle on the Bluetooth Shutter from the "off" position to "on" position. A green light will illuminate when "on".

Step 2:

To connect, locate the Bluetooth settings on your mobile device. Connect to LCP-BT-SHUTTER.

Step 3:

Once connected, the light on the Bluetooth Shutter will flash for photo and video when pressed/engaged.

Filter Installation

Attaching filters to the cage or case.



INSTALLATION

Step 1:

Place phone in the LiteChaser Pro 14 aluminum cage or minimalist case and turn off camera flash.

Step 2:

With the phone's camera side facing you, align prongs located on the filter with the receiver slots located on the case.

Step 3:

Insert filter prongs into the receiver slots until the filter is sitting flush with the case.

Step 4:

While gently pressing downward, slide filter to the right until it clicks into a secure position.

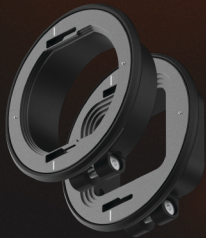
REMOVAL

Step 1:

With the phone's camera side facing you, gently press filter to the left until the prongs release from case slots.

Moment® Lens Filter Adapters

Mounting filters to Moment® lenses.



INSTALLATION

Step 1:

First, attach the Moment® 58mm or anamorphic lens of choice to the LCP14 aluminum cage or minimalist case.

Step 2:

Next, use the supplied hex key to loosen the screw on the adapter. Once loosened, place the adapter over the lens until it is seated over the lens. Tighten the screw.

Step 3:

Align the prongs located on the filter with the receiver slots on the adapter and insert. While gently pressing downward, slide the filter to the right until it clicks into a secure position.

REMOVAL

Step 1:

Reverse steps above to remove filter and adapter.

More Info

Questions and support.

QUESTIONS?

Reach out any time via live-chat on our website, or shoot us an email. We're happy to help!

polarpro.com | support@polarpro.com | 949.220.9395