

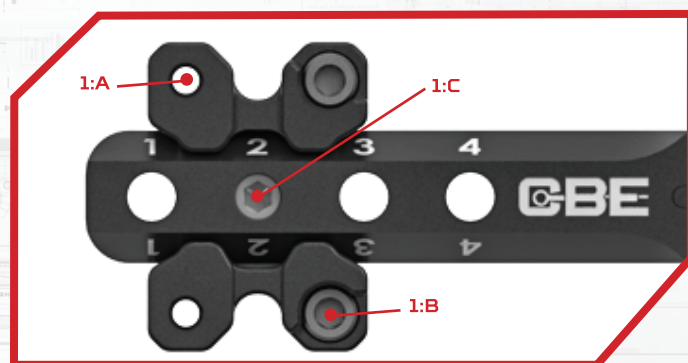
CBE®

CUSTOM BOW EQUIPMENT

ENGAGE MICRO INSTRUCTIONS

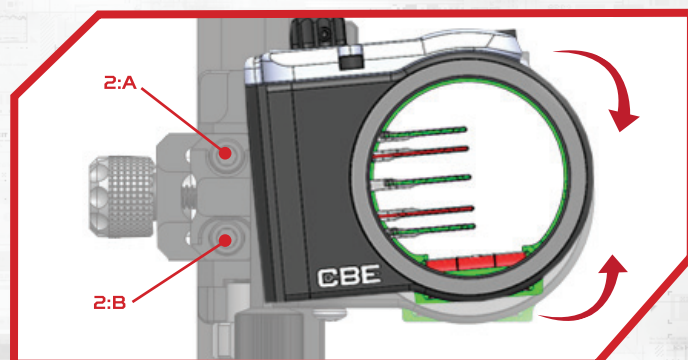
MOUNTING YOUR SIGHT

Your Engage Sight has an adjustable Dovetail Mounting system. With the Dovetail Mount system, you have 4 sets of hole options to mount your sight at the optimal position. Mount your sight to the bow with the 2, #10-24 x 5/8" screws provided (1:B). Set your dovetail mounting location with the provided 5/16"-24 set screw (1:C) by using a 5/32" Hex to select between positions 1 through 4. There are 2, #10-24 holes located on the riser bracket for quiver mounting if necessary (1:A).



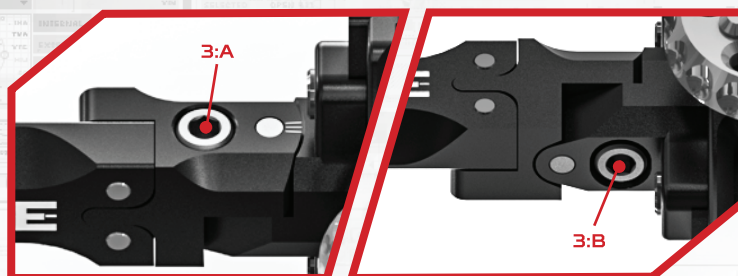
2ND AXIS LEVELING ADJUSTMENT

To adjust the 2nd axis on the Engage, loosen, but do not remove, the 2, #8-32 (2:A, 2:B) screws with a 9/64" Hex, attached to the windage housing. Level the 2nd axis by rotating the housing until level and retighten the screws.



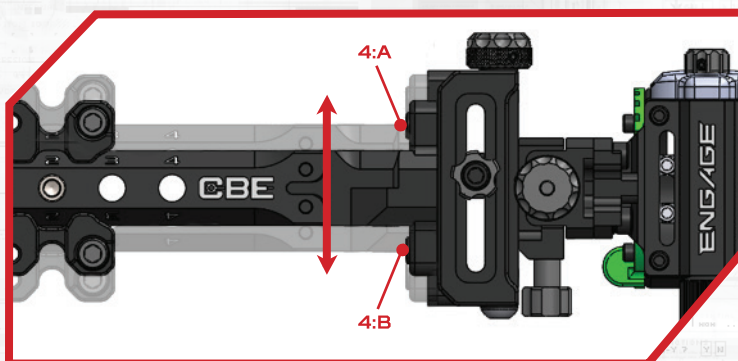
3RD AXIS ADJUSTMENT

To adjust the 3rd axis, loosen, but do not remove, both #10-32 (3:A and 3:B) screws with a 5/32" Hex. Using the laser engraved reference mark, adjust the position of your sight. Once it is set in the desired location, lock down both screws.



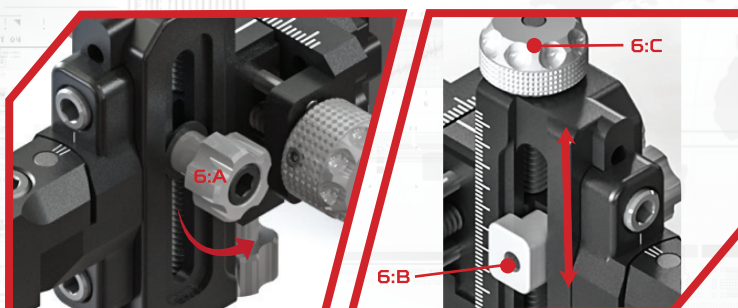
ELEVATION GANG ADJUSTMENT

To gang adjust elevation, remove the 2, #8-32 screws (4:A, 4:B) with a 9/64" Hex. There are 3 different mounting locations and set to desired position. Tighten the #8-32 screws when complete. There are 3 different mounting options.



ELEVATION MICRO ADJUSTMENT

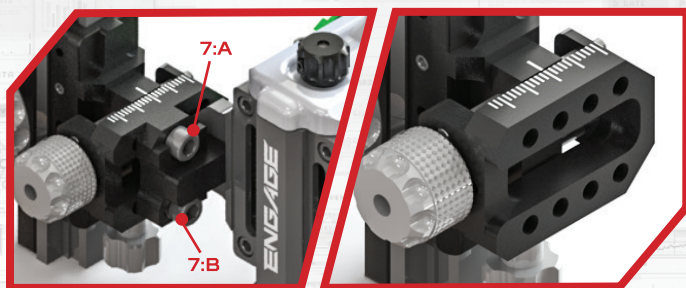
Unlock the Lock Knob using a 9/64" Hex. (6a) Use the elevation knob to adjust the position of your scope housing (6c). Set your scope housing to the desired position. Once set, tighten down the lock knob to by hand to the elevation body. Once complete, use a 9/64" Hex to tighten down your Lock Knob, into the toe-clamp (6b) and to lock your elevation into place. Rotate Elevation knob clockwise to move up, and Counter-Clockwise to move down.



CONTINUE TO NEXT PAGE

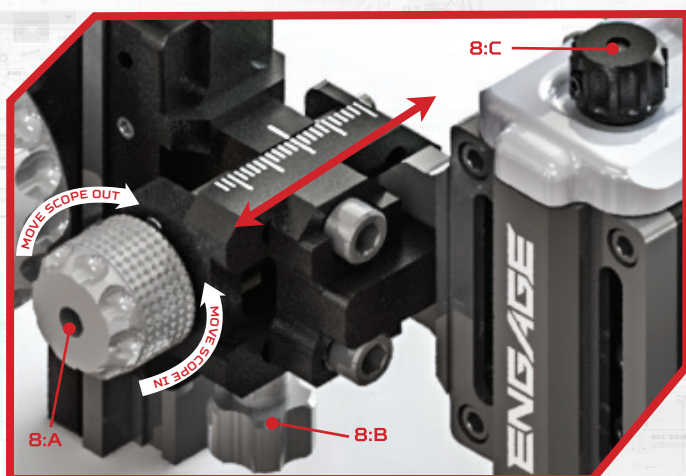
WINDAGE GANG ADJUSTMENT

To gang adjust windage, remove the 2, #8-32 screws with a 9/64" Hex (7:A and 7:B). There are 4 different mounting locations available. Set your 2nd axis mount into the desired mounting location and tighten down the screws.



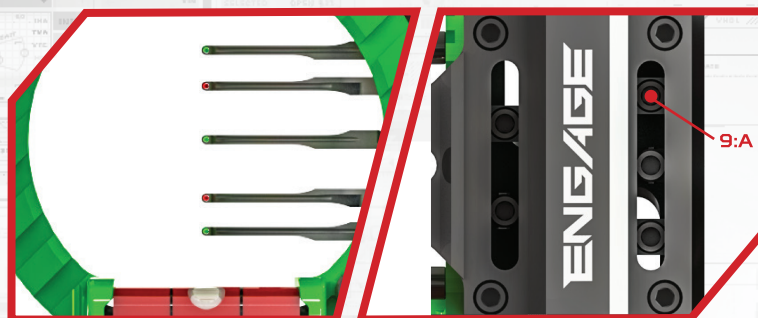
WINDAGE MICRO ADJUSTMENT

To micro adjust windage, loosen the Lock Knob (8b). Rotate the Windage Knob (8A) until the scope housing is in its desired location. Once it is complete, lock down the windage with the Lock Knob (8b). If desired, use a 9/64" Hex to tighten down the Lock Knob more (8b). **Note: Once finger tight, DO NOT rotate lock knob with a HEX more than 1/4 revolution.**



MICRO PIN ADJUSTMENT

Pins can be individually micro adjusted by loosening the #4-40 (9:A) screw with a 5/32" Hex for the desired pin. Back out the screw 4-1/4" Revolutions (or about 0.106") to engage the lead screw. Once the pin is engaged on the lead screw, rotate the Pin Knob (8:C) to adjust pin location. Once your pin is set to the desired location, lock down the pin with the 5/32" Hex until tight. Repeat these steps for to adjust the additional pins. **Note: Do not overtighten.**



THANK YOU FOR CHOOSING CUSTOM BOW EQUIPMENT!

THE OUTDOOR GROUP, LLC

1325 John Street, West Henrietta, NY 14586

(877) 503-5483

www.custombowequipment.com

THE OUTDOOR GROUP, LLC

LIABILITY DISCLAIMER

The Outdoor Group, LLC is not liable for any personal injury, death, or property damage that may result from your use of this product. The user of this product assumes all risks of property damage or injury to yourself and others that may arise from its use. Use of this product binds the user to this agreement.

WARRANTY SERVICES:

TOUGH AS NAILS GUARANTEE

IMPORTANT: In the unlikely event that you require service on your product, please contact Customer Service at 1 (877) 503-5483. If necessary, our Customer Service Agents will provide you with a Return Merchandise Authorization (RMA) number and instructions on how to ship the product(s) back. It's important that you contact a Customer Service Agent before returning any item. Please be sure to include your RMA number when returning an item, so that we can identify the return as yours. Without the RMA, we will not be able to process your return, and your item will not be returned to you.

PATENT INFORMATION

This product is covered by one or more patents. A complete list of Custom Bow Equipment patents can be found by visiting custombowequipment.com/pages/patents