



2024 Building Pricing & Options



Sheds



Garages



Cabins / Custom Orders



Delivered Fully Built

View Current Inventory, Videos & Order At:

www.CedarRockBarns.com

Call Us With Questions / Order By Phone

(844)MISheds / (844) 647-4337



You Tube Find us on **YouTube**
[YouTube.com/CedarRockBarns](https://www.youtube.com/CedarRockBarns)

Like us on facebook
[FaceBook.com/CedarRockBarns](https://www.facebook.com/CedarRockBarns)

- Everyone Is Approved !!**
- Affordable Monthly Payments
- Available On Most Buildings
- Pay Off Early & Save \$\$!

*Must Be 18 Years Old w/ Valid ID, some exclusions may apply





Pro Series



*8' Wide Pro Series Come With 12" OC Un-Treated Floor Joist with 1/2" Plywood Flooring



8' Painted Pro Series 4' Sidelwalls

Size	Cash Price	RTO Starting At:
8x8	\$ 2,365.00	\$ 87.59 / Month*
8x10	\$ 2,617.00	\$ 96.93 / Month*
8x12	\$ 2,932.00	\$108.59 / Month*
8x14	\$ 3,119.00	\$115.52 / Month*
8x16	\$ 3,243.00	\$120.11 / Month*
10x10	\$ 3,119.00	\$115.52 / Month*
10x12	\$ 3,231.00	\$119.67 / Month*
10x14	\$ 3,484.00	\$129.04 / Month*
10x16	\$ 3,619.00	\$134.04 / Month*
12x12	\$ 3,676.00	\$136.15 / Month*
12x14	\$ 4,009.00	\$148.48 / Month*
12x16	\$ 4,345.00	\$160.93 / Month*



Add A Ramp

Up To 6' Wide | \$ 147.00



Add A Loft

8' Wide x 1' Deep	\$31.52
10' Wide x 1' Deep	\$39.40
12' Wide x 1' Deep	\$47.28

8' Vinyl Pro Series

Size	Cash Price	RTO Starting At:
8x8	\$ 2,567.00	\$ 95.07 / Month*
8x10	\$ 2,843.00	\$ 105.30 / Month*
8x12	\$ 3,188.00	\$ 118.07 / Month*
8x14	\$ 3,393.00	\$ 125.67 / Month*
8x16	\$ 3,529.00	\$ 130.70 / Month*
10x10	\$ 3,393.00	\$ 125.67 / Month*
10x12	\$ 3,517.00	\$ 130.26 / Month*
10x14	\$ 3,790.00	\$ 140.37 / Month*
10x16	\$ 3,940.00	\$ 145.93 / Month*
12x12	\$ 4,002.00	\$ 148.22 / Month*
12x14	\$ 4,365.00	\$ 161.67 / Month*
12x16	\$ 4,732.00	\$ 175.26 / Month*

View Siding, Trim and Shingle Options On Pages 32-34



Foundation: 4x4 Treated Runners
Floor Joists: Treated 2x4 Floor Joist 16" On Center
 *(Un-Treated 2x4's 12" on center laid flat on all 8'
Wide Pro Series)*
Flooring: 5/8" Exterior Grade Sanded Plywood Flooring
 (1/2" Plywood on all 8' Wide Pro Series)
Sidewall Studs: 2x4 Wall Framing 24" On Center
Exterior Siding: Vinyl Buildings: 7/16" OSB With Vinyl Siding
 Painted Buildings: LP SmartSide Panel Siding

Rafters: 2x4 Rafters 24" On Center
Roof Sheathing: 7/16" OSB
Roof: 25 Year 3 Tab Shingles (Metal Roof On Pro Cottage)
Vent: Vinyl: 4' Ridge Vent Painted: End Vents
Doors: Double Swing w/ Locking Tee Handle
 - 8' Buildings: 56"x6' Doors 10' Buildings: 60"x6' Doors 12' Buildings: 72"x6' Doors

*This advertised transaction is a rental purchase agreement (also referred to as an RTO agreement). The Total of All Payments does not include applicable taxes or optional fees and other charges (such as late charges) that you may incur. You will not own or obtain equity in the merchandise until the total amount necessary to acquire ownership is paid in full or you exercise your early purchase option. Ownership is optional. Delivery fees may apply. No Credit Needed does not mean or imply that no inquiry will be made of credit history or credit worthiness. We may check the past transactional history, but no established FICO score or credit history is necessary. Free Delivery applies to new standard sized buildings in zone 1. Additional fees may apply for oversized buildings and long / difficult deliveries. Advertised rental rates and terms are for new merchandise at participating locations. Prices not valid outside the State Of Michigan. Some Exclusions May Apply.

8' Vinyl Pro - 8x8 = \$95.07 a month for 60 months | 60 Payments = \$5704.2 | RTO Charge: \$3137.2, 8x10 = \$105.3 a month for 60 months | 60 Payments = \$6318 | RTO Charge: \$3475, 8x12 = \$118.07 a month for 60 months | 60 Payments = \$7084.2 | RTO Charge: \$3896.2, 8x14 = \$125.67 a month for 60 months | 60 Payments = \$7540.2 | RTO Charge: \$4147.2, 8x16 = \$130.7 a month for 60 months | 60 Payments = \$7842 | RTO Charge: \$4313, 10x10 = \$125.67 a month for 60 months | 60 Payments = \$7540.2 | RTO Charge: \$4147.2, 10x12 = \$130.26 a month for 60 months | 60 Payments = \$7815.6 | RTO Charge: \$4298.6, 10x14 = \$140.37 a month for 60 months | 60 Payments = \$8422.2 | RTO Charge: \$4632.2, 10x16 = \$145.93 a month for 60 months | 60 Payments = \$8755.8 | RTO Charge: \$4815.8, 12x12 = \$148.22 a month for 60 months | 60 Payments = \$8893.2 | RTO Charge: \$4891.2, 12x14 = \$161.67 a month for 60 months | 60 Payments = \$9700.2 | RTO Charge: \$5335.2, 12x16 = \$175.26 a month for 60 months | 60 Payments = \$10515.6 | RTO Charge: \$5783.6.

8' Painted Pro - 8x8 = \$87.59 a month for 60 months | 60 Payments = \$5255.4 | RTO Charge: \$2890.4, 8x10 = \$96.93 a month for 60 months | 60 Payments = \$5815.8 | RTO Charge: \$3198.8, 8x12 = \$108.59 a month for 60 months | 60 Payments = \$6515.4 | RTO Charge: \$3583.4, 8x14 = \$115.52 a month for 60 months | 60 Payments = \$6931.2 | RTO Charge: \$3812.2, 8x16 = \$120.11 a month for 60 months | 60 Payments = \$7206.6 | RTO Charge: \$3963.6, 10x10 = \$115.52 a month for 60 months | 60 Payments = \$6931.2 | RTO Charge: \$3812.2, 10x12 = \$119.67 a month for 60 months | 60 Payments = \$7180.2 | RTO Charge: \$3949.2, 10x14 = \$129.04 a month for 60 months | 60 Payments = \$7742.4 | RTO Charge: \$4258.4, 10x16 = \$134.04 a month for 60 months | 60 Payments = \$8042.4 | RTO Charge: \$4423.4, 12x12 = \$136.15 a month for 60 months | 60 Payments = \$8169 | RTO Charge: \$4493, 12x14 = \$148.48 a month for 60 months | 60 Payments = \$8808.8 | RTO Charge: \$4899.8, 12x16 = \$160.93 a month for 60 months | 60 Payments = \$9655.8 | RTO Charge: \$5310.8.

Visit www.CedarRockBarns.com For More Info, Pictures & To Place An Order

Online Ordering Available At: www.CedarRockBarns.com - Purchase or Rent To Own - ©Cedar Rock Barns, LLC - February 2024 - All Rights Reserved -





Pro Series



*8' Wide Pro Series Come With 12" OC Un-Treated Floor Joist with 1/2" Plywood Flooring



Siding: Monterey Sand
Trim: White
Roof: Weatherwood



Siding: Charcoal Smoke
Trim: White
Roof: Charcoal Gray



Siding: Gray
Trim: White
Roof: Black



Siding: Jamestown Red
Trim: White
Roof: Black



9' Vinyl Pro Series

Size	Cash Price	RTO Starting At:
8x8	\$ 3,270.00	\$ 121.11 / Month*
8x10	\$ 3,444.00	\$ 127.56 / Month*
8x12	\$ 3,615.00	\$ 133.89 / Month*
8x14	\$ 3,827.00	\$ 141.74 / Month*
8x16	\$ 4,009.00	\$ 148.48 / Month*
10x10	\$ 3,774.00	\$ 139.78 / Month*
10x12	\$ 3,932.00	\$ 145.63 / Month*
10x14	\$ 4,259.00	\$ 157.74 / Month*
10x16	\$ 4,432.00	\$ 164.15 / Month*
12x12	\$ 4,162.00	\$ 154.15 / Month*
12x14	\$ 4,548.00	\$ 168.44 / Month*
12x16	\$ 4,934.00	\$ 182.74 / Month*



Add A Ramp

Up To 6' Wide \$147.00



Add A Loft

8' Wide x 1' Deep	\$31.52
10' Wide x 1' Deep	\$39.40
12' Wide x 1' Deep	\$47.28

10' Painted Pro Series

6' Sidewalls 4' Loft Included

Size	Cash Price	RTO Starting At:
10x10	\$ 3,719.00	\$137.74 / Month*
10x12	\$ 3,938.00	\$145.85 / Month*
10x14	\$ 4,298.00	\$159.19 / Month*
10x16	\$ 4,574.00	\$169.41 / Month*
12x12	\$ 4,215.00	\$156.11 / Month*
12x14	\$ 4,574.00	\$169.41 / Month*
12x16	\$ 4,939.00	\$182.93 / Month*

Pro Series Shed Specs:

- Foundation: 4x4 Treated Runners
- Floor Joists: Treated 2x4 Floor Joist 16" On Center
(Un-Treated 2x4s 12" on center laid flat on all 8' Wide Pro Series)
- Flooring: 5/8" Exterior Grade Sanded Plywood Flooring
(1/2" Plywood on all 8' Wide Pro Series)
- Sidewall Studs: 2x4 Wall Framing 24" On Center
- Exterior Siding: **Vinyl Buildings:** 7/16" OSB With Vinyl Siding
Painted Buildings: LP SmartSide Panel Siding
- Rafters: 2x4 Rafters 24" On Center
- Roof Sheathing: 7/16" OSB
- Roof: 25 Year 3 Tab Shingles *(Metal Roof On Pro Cottage)*
- Vent: Vinyl: 4' Ridge Vent Painted: End Vents
- Doors: Double Swing w/ Locking Tee Handle
- 8' Buildings: 56"x6' Doors 10' Buildings: 60"x6' Doors 12' Buildings: 72"x6' Doors



10x16 10' Pro Series w/ 4' Loft

View Siding, Trim and Shingle Options On Pages 32-34

*This advertised transaction is a rental-purchase agreement (also referred to as an RTO agreement). The Total of All Payments does not include applicable taxes or optional fees and other charges (such as late charges) that you may incur. You will not own or obtain equity in the merchandise until the total amount necessary to acquire ownership is paid in full or you exercise your early purchase option. Ownership is optional. Delivery fees may apply. No Credit Needed does not mean or imply that no inquiry will be made of credit history or creditworthiness. We may check the past transactional history, but no established FICO score or credit history is necessary. Free Delivery applies to new standard sized buildings in zone 1. Additional fees may apply for oversized buildings and long / difficult deliveries. Advertised rental rates and terms are for new merchandise at participating locations. Prices not valid outside the State Of Michigan, Some Exclusions May Apply.

9' Pro Series - 8x8 = \$121.11 a month for 60 months | 60 Payments = \$7266.6 | RTO Charge: \$3996.6, 8x10 = \$127.56 a month for 60 months | 60 Payments = \$7653.6 | RTO Charge: \$4209.6, 8x12 = \$133.89 a month for 60 months | 60 Payments = \$8033.4 | RTO Charge: \$4418.4, 8x14 = \$141.74 a month for 60 months | 60 Payments = \$8504.4 | RTO Charge: \$4677.4, 8x16 = \$148.48 a month for 60 months | 60 Payments = \$8908.8 | RTO Charge: \$4899.8, 10x10 = \$139.78 a month for 60 months | 60 Payments = \$8386.8 | RTO Charge: \$4612.8, 10x12 = \$145.63 a month for 60 months | 60 Payments = \$8737.8 | RTO Charge: \$4805.8, 10x14 = \$157.74 a month for 60 months | 60 Payments = \$9464.4 | RTO Charge: \$5205.4, 10x16 = \$164.15 a month for 60 months | 60 Payments = \$9849 | RTO Charge: \$5417, 12x12 = \$154.15 a month for 60 months | 60 Payments = \$9249 | RTO Charge: \$5087, 12x14 = \$168.44 a month for 60 months | 60 Payments = \$10106.4 | RTO Charge: \$5558.4, 12x16 = \$182.74 a month for 60 months | 60 Payments = \$10964.4 | RTO Charge: \$6303.4,

10' Pro Series - 10x10 = \$137.74 a month for 60 months | 60 Payments = \$8264.4 | RTO Charge: \$4545.4, 10x12 = \$145.85 a month for 60 months | 60 Payments = \$8751 | RTO Charge: \$4813, 10x14 = \$159.19 a month for 60 months | 60 Payments = \$9551.4 | RTO Charge: \$5253.4, 10x16 = \$169.41 a month for 60 months | 60 Payments = \$10164.6 | RTO Charge: \$5590.6, 12x12 = \$156.11 a month for 60 months | 60 Payments = \$9366.6 | RTO Charge: \$5151.6, 12x14 = \$169.41 a month for 60 months | 60 Payments = \$10164.6 | RTO Charge: \$5590.6, 12x16 = \$182.93 a month for 60 months | 60 Payments = \$10975.8 | RTO Charge: \$6036.8,

Visit www.CedarRockBarns.com For More Info, Pictures & To Place An Order

Online Ordering Available At: www.CedarRockBarns.com - Purchase or Rent To Own - ©Cedar Rock Barns, LLC - February 2024 - All Rights Reserved





Pro Series Specifications



Interior - 10' Painted Pro Series w/ STD 4' Loft



Interior - Painted Pro Series Cottage

If you are looking for the most economical solution to getting your valuables put away than the Pro Series is the right choice for you. Our Pro Series buildings offer a low cost storage solution providing a safe and secure place for your items while still looking great! Available in 5 different styles from 8'x8' up to 12'x16' and with painted or vinyl siding.

Vinyl: 4' Ridge Vent

Painted: End Vent

Vinyl: Double Four Dutch Lap Siding
Painted: LP SmartSide® Engineered Siding

8', 9' & 10' Pro Series: 25 Year 3 Tab Shingles
Pro Series Cottage: Metal Roof Standard

Vinyl: Double Swing Doors w/
Aluminum Wrapped Trim
Or
Painted: Double Swing Doors w/
Painted Trim

Aluminum Soffit
Facia & Drip Edge

2x4 Framing
24" On Center

4x4 Pressure
Treated Runners

2x4 Treated Floor Joist 16" OC
(2x4 Un-Treated Floor Joist 12" OC On 8' Pro Series)

Locking Tee Handle w / Keyed Set

5/8" Exterior Grade Plywood Flooring
(1/2" on 8' Pro Series)



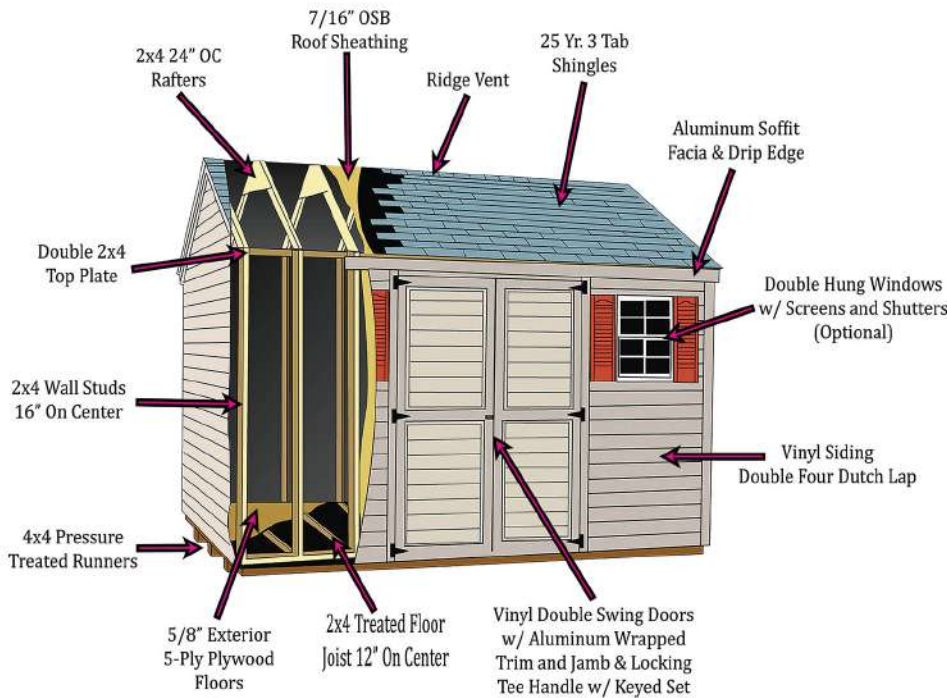


Premium Building Specifications



Vinyl Building Standard Specs

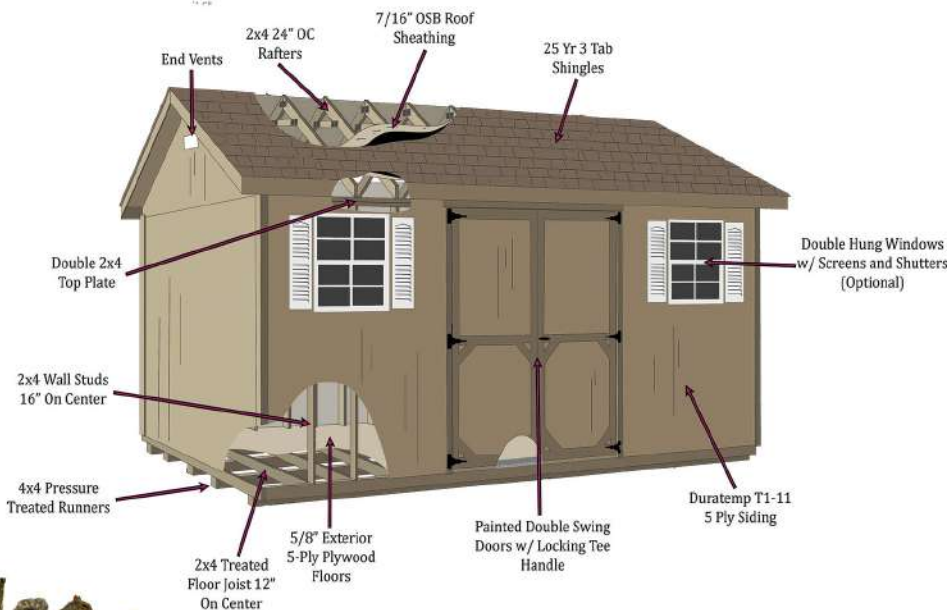
*For All Buildings Marked With A Premium Badge



- Foundation:** 4x4 Pressure Treated Runners
- Floor Joists:** 2x4 Pressure Treated Floor Joists 12" On Center
- Flooring:** 5/8" Exterior Grade Sanded Plywood or Optional 3/4" Pressure Treated Sanded Plywood
- Sidewall Studs:** 2x4 Wall Framing 16" On Center With Double Top Plate
- Exterior Siding:** 7/16" OSB With Vinyl Siding (1/2" 4 Ply Plywood Optional)
- Rafters:** 2x4 Rafters 24" On Center (16" OC Optional)
- Roof Sheathing:** 7/16" OSB (1/2" 4 Ply Plywood Optional)
- Roof:** 25 Year 3 Tab Shingles (Architectural Shingles & Steel Roof Optional)
- Doors:** Double Swing Vinyl Clad With Aluminum Wrapped Trim & Jamb (Metal Roll Up & Pre-Hung Doors Optional)
- Windows:** Select Models Have Standard Windows (Optional On All Buildings)
- Latch:** Tee Handle With Locked Key Set

Painted Building Standard Specs

*For All Buildings Marked With A Premium Badge



- Foundation:** 4x4 Pressure Treated Runners
- Floor Joists:** 2x4 Pressure Treated Floor Joists 12" On Center
- Flooring:** 5/8" Exterior Grade Sanded Plywood or Optional 3/4" Pressure Treated Sanded Plywood
- Sidewall Studs:** 2x4 Wall Framing 16" On Center With Double Top Plate
- Exterior Siding:** Duratem 5 Ply T1-11 Siding
- Rafters:** 2x4 Rafters 24" On Center (16" OC Optional)
- Roof Sheathing:** 7/16" OSB (1/2" 4 Ply Plywood Optional)
- Roof:** 25 Year 3 Tab Shingles (Architectural Shingles & Steel Roof Optional)
- Doors:** Double Swing Painted Doors (Metal Roll Up & Pre-Hung Doors Optional)
- Windows:** Select Models Have Standard Windows (Optional On All Buildings)
- Latch:** Tee Handle With Locked Key Set





High Barn



Standard Vinyl High Barn Includes: Roll Up Door

Std. Roll Up Door: 8' Building: 5'x6'4" 10' Building: 5'x6'4" 12' Building: 6'x6'4" 14' & 16' Building: 7'x7'

Max Roll Up Size: 8' Building: 5'x6'4" 10' Building: 7'x7' 12' Building: 8'x7' 14' & 16' Building: 9'x7'

Doors Will Fit On Gable Ends Only

*Approximate Height Based Off A 10' Wide Building



Vinyl High Barn

Loft (1' x Building Width)	
8' Wide Building	\$ 31.52
10' Wide Buildings	\$ 39.40
12' Wide Buildings	\$ 47.28
14' Wide Buildings	\$ 66.22
16' Wide Buildings	\$ 75.68
Windows	
21x27 Window	\$ 105.00
24x36 Window	\$ 152.00
10x72" Transom	\$ 194.00
Ramp	
Up To 6' Wide	\$ 147.00
3' x 84" Ramp	\$ 163.00
3' x 96" Ramp	\$ 179.00
3' x 108" Ramp	\$ 194.00



QP811



QP812



QP813

Shown w/ Optional 21x27 Window



12x20 Vinyl High Barn w/ 4' Loft

Size	Cash Price	RTO Starting At:
8x8	\$ 4,056.00	\$150.22 / Month*
8x10	\$ 4,307.00	\$159.52 / Month*
8x12	\$ 4,584.00	\$169.78 / Month*
8x14	\$ 4,824.00	\$178.67 / Month*
8x16	\$ 5,083.00	\$188.26 / Month*
10x10	\$ 4,699.00	\$174.04 / Month*
10x12	\$ 4,936.00	\$182.81 / Month*
10x14	\$ 5,286.00	\$195.78 / Month*
10x16	\$ 5,557.00	\$205.81 / Month*
10x18	\$ 5,864.00	\$217.19 / Month*
10x20	\$ 6,173.00	\$228.63 / Month*
12x12	\$ 5,175.00	\$191.67 / Month*
12x14	\$ 5,635.00	\$208.70 / Month*
12x16	\$ 6,095.00	\$225.74 / Month*
12x18	\$ 6,515.00	\$241.30 / Month*
12x20	\$ 6,922.00	\$256.37 / Month*
12x24	\$ 7,732.00	\$286.37 / Month*
12x28	\$ 8,420.00	\$311.85 / Month*
12x32	\$ 9,452.00	\$350.07 / Month*
12x36	\$ 10,441.00	\$386.70 / Month*
14x20	\$ 7,852.00	\$290.81 / Month*
14x24	\$ 8,967.00	\$332.11 / Month*
14x28	\$ 9,911.00	\$367.07 / Month*
14x32	\$ 10,892.00	\$403.41 / Month*
14x36	\$ 11,912.00	\$441.19 / Month*
14x40	\$ 12,922.00	\$478.59 / Month*
16x24	\$ 10,233.00	\$379.00 / Month*
16x28	\$ 11,531.00	\$427.07 / Month*
16x32	\$ 12,537.00	\$464.33 / Month*
16x36	\$ 13,943.00	\$516.41 / Month*
16x40	\$ 15,532.00	\$575.26 / Month*
16x44	\$ 16,710.00	\$618.89 / Month*
16x48	\$ 18,167.00	\$672.85 / Month*



View Additional Options & Color Choices On Pages 30-34



*This advertised transaction is a rental-purchase agreement (also referred to as an RTO agreement). The Total of All Payments does not include applicable taxes or optional fees and other charges (such as late charges) that you may incur. You will not own or obtain equity in the merchandise until the total amount necessary to acquire ownership is paid in full or you exercise your early purchase option. Ownership is optional. Delivery fees may apply. No Credit Needed does not mean or imply that no inquiry will be made of credit history or creditworthiness. We may check the past transactional history, but no established FICO score or credit history is necessary. Free Delivery applies to new standard sized buildings in zone 1. Additional fees may apply for oversized buildings and long / difficult deliveries. Advertised rental rates and terms are for new merchandise at participating locations. Prices not valid outside the State Of Michigan. Some Exclusions May Apply.

8x8 = \$150.22 a month for 60 months | 60 Payments = \$9013.2 | RTO Charge: \$4957.2, 8x10 = \$159.52 a month for 60 months | 60 Payments = \$9571.2 | RTO Charge: \$5264.2, 8x12 = \$169.78 a month for 60 months | 60 Payments = \$10126.8 | RTO Charge: \$5602.8, 8x14 = \$178.67 a month for 60 months | 60 Payments = \$10720.2 | RTO Charge: \$5896.2, 8x16 = \$188.26 a month for 60 months | 60 Payments = \$11295.6 | RTO Charge: \$6212.6, 10x10 = \$174.04 a month for 60 months | 60 Payments = \$10442.4 | RTO Charge: \$5743.4, 10x12 = \$182.81 a month for 60 months | 60 Payments = \$10968.6 | RTO Charge: \$6032.6, 10x14 = \$195.78 a month for 60 months | 60 Payments = \$11746.8 | RTO Charge: \$6460.8, 10x16 = \$205.81 a month for 60 months | 60 Payments = \$12348.6 | RTO Charge: \$6791.6, 10x18 = \$217.19 a month for 60 months | 60 Payments = \$13031.4 | RTO Charge: \$7167.4, 10x20 = \$228.63 a month for 60 months | 60 Payments = \$13717.8 | RTO Charge: \$7544.8, 12x12 = \$191.67 a month for 60 months | 60 Payments = \$11500.2 | RTO Charge: \$6325.2, 12x14 = \$208.70 a month for 60 months | 60 Payments = \$12522 | RTO Charge: \$6687, 12x16 = \$225.74 a month for 60 months | 60 Payments = \$13544.4 | RTO Charge: \$7449.4, 12x18 = \$241.30 a month for 60 months | 60 Payments = \$14478 | RTO Charge: \$7963, 12x20 = \$256.37 a month for 60 months | 60 Payments = \$15382.2 | RTO Charge: \$8460.2, 12x24 = \$286.37 a month for 60 months | 60 Payments = \$17182.2 | RTO Charge: \$9450.2, 12x28 = \$311.85 a month for 60 months | 60 Payments = \$18711 | RTO Charge: \$10291, 12x32 = \$350.07 a month for 60 months | 60 Payments = \$21004.2 | RTO Charge: \$11552.2, 12x36 = \$386.70 a month for 60 months | 60 Payments = \$23202 | RTO Charge: \$12761, 14x20 = \$290.81 a month for 60 months | 60 Payments = \$17448.6 | RTO Charge: \$9596.6, 14x24 = \$332.11 a month for 60 months | 60 Payments = \$19926.6 | RTO Charge: \$10959.6, 14x28 = \$367.07 a month for 60 months | 60 Payments = \$22024.2 | RTO Charge: \$12132.2, 14x32 = \$403.41 a month for 60 months | 60 Payments = \$24204.6 | RTO Charge: \$13312.6, 14x36 = \$441.19 a month for 60 months | 60 Payments = \$26471.4 | RTO Charge: \$14559.4, 14x40 = \$478.59 a month for 60 months | 60 Payments = \$28785.8 | RTO Charge: \$15322.8, 16x36 = \$516.41 a month for 60 months | 60 Payments = \$30984.6 | RTO Charge: \$17041.6, 16x40 = \$575.26 a month for 60 months | 60 Payments = \$34515.6 | RTO Charge: \$18983.6, 16x44 = \$618.89 a month for 60 months | 60 Payments = \$37331.4 | RTO Charge: \$20423.4, 16x48 = \$672.85 a month for 60 months | 60 Payments = \$40371 | RTO Charge: \$22204



Visit www.CedarRockBarns.com For More Info, Pictures & To Place An Order

- Online Ordering Available At: www.CedarRockBarns.com - Purchase or Rent To Own - ©Cedar Rock Barns, LLC - February 2024 - All Rights Reserved -



High Barn



Standard Painted High Barn Includes: Double Doors *Approximate Height Based Off A 10' Wide Building

Std. Double Doors: 8' Building: 5'6"x6' 10' Building: 6'0"x6' 12', 14' & 16' Building: 7'2"x6'
 Max Roll Up Size: 8' Building: 5'x6'4" 10' Building: 7'x7' 12' Building: 8'x7' 14' & 16' Building: 9'x7'
 Doors Will Fit On Gable Ends Only



Painted High Barn

Size	Cash Price	RTO Starting At:
8x8	\$ 3,574.00	\$132.37 / Month*
8x10	\$ 3,829.00	\$141.81 / Month*
8x12	\$ 4,108.00	\$152.15 / Month*
8x14	\$ 4,349.00	\$161.07 / Month*
8x16	\$ 4,613.00	\$170.85 / Month*
10x10	\$ 4,172.00	\$154.52 / Month*
10x12	\$ 4,410.00	\$163.33 / Month*
10x14	\$ 4,747.00	\$175.81 / Month*
10x16	\$ 5,031.00	\$186.33 / Month*
10x18	\$ 5,351.00	\$198.19 / Month*
10x20	\$ 5,661.00	\$209.67 / Month*
12x12	\$ 4,652.00	\$172.30 / Month*
12x14	\$ 5,097.00	\$188.78 / Month*
12x16	\$ 5,545.00	\$205.37 / Month*
12x18	\$ 5,962.00	\$220.81 / Month*
12x20	\$ 6,361.00	\$235.59 / Month*
12x24	\$ 7,161.00	\$265.22 / Month*
12x28	\$ 7,835.00	\$290.19 / Month*
12x32	\$ 8,804.00	\$326.07 / Month*
12x36	\$ 9,781.00	\$362.26 / Month*
14x20	\$ 6,974.00	\$258.30 / Month*
14x24	\$ 8,099.00	\$299.96 / Month*
14x28	\$ 8,928.00	\$330.67 / Month*
14x32	\$ 9,861.00	\$365.22 / Month*
14x36	\$ 10,832.00	\$401.19 / Month*
14x40	\$ 11,867.00	\$439.52 / Month*
16x24	\$ 9,689.00	\$358.85 / Month*
16x28	\$ 10,746.00	\$398.00 / Month*
16x32	\$ 11,754.00	\$435.33 / Month*
16x36	\$ 13,075.00	\$484.26 / Month*
16x40	\$ 14,335.00	\$530.93 / Month*
16x44	\$ 15,401.00	\$570.41 / Month*
16x48	\$ 16,790.00	\$621.85 / Month*

Loft (1' x Building Width)	
8' Wide Building	\$ 31.52
10' Wide Buildings	\$ 39.40
12' Wide Buildings	\$ 47.28
14' Wide Buildings	\$ 66.22
16' Wide Buildings	\$ 75.68

Windows	
21x27 Window	\$105.00
24x36 Window	\$152.00
10x72" Transom	\$194.00

Ramp	
Up To 6' Wide	\$147.00
3' x 84" Ramp	\$163.00
3' x 96" Ramp	\$179.00
3' x 108" Ramp	\$194.00

Roll Up Doors	
5'x6'4" Roll Up	\$683.00
6'x6'4" Roll Up	\$735.00
7'x7' Roll Up	\$798.00
8'x7' Roll Up	\$830.00
9'x7' Roll Up	\$851.00

Siding: Monterey Sand
Trim: White
Roof: brown



QP815

Siding: Jamestown Red
Trim: White
Roof: Black



12x16 Painted High Barn w/ Optional Loft & Ramp

View Additional Options & Color Choices On Pages 30-34

*This advertised transaction is a rental-purchase agreement (also referred to as an RTO agreement). The Total of All Payments does not include applicable taxes or optional fees and other charges (such as late charges) that you may incur. You will not own or obtain equity in the merchandise until the total amount necessary to acquire ownership is paid in full or you exercise your early purchase option. Ownership is optional. Delivery fees may apply. No Credit Needed does not mean or imply that no inquiry will be made of credit history or creditworthiness. We may check the past transactional history, but no established FICO score or credit history is necessary. Free Delivery applies to new standard sized buildings in zone 1. Additional fees may apply for oversized buildings and long / difficult deliveries. Advertised rental rates and terms are for new merchandise at participating locations. Prices not valid outside the State Of Michigan. Some Exclusions May Apply.

8x8 = \$132.37 a month for 60 months | 60 Payments = \$7942.2 | RTO Charge: \$4368.2, 8x10 = \$141.81 a month for 60 months | 60 Payments = \$8508.6 | RTO Charge: \$4679.6, 8x12 = \$152.15 a month for 60 months | 60 Payments = \$9129 | RTO Charge: \$5021, 8x14 = \$161.07 a month for 60 months | 60 Payments = \$9664.2 | RTO Charge: \$5315.2, 8x16 = \$170.85 a month for 60 months | 60 Payments = \$10251 | RTO Charge: \$5638, 10x10 = \$154.52 a month for 60 months | 60 Payments = \$9271.2 | RTO Charge: \$5099.2, 10x12 = \$163.33 a month for 60 months | 60 Payments = \$9799.8 | RTO Charge: \$5389.8, 10x14 = \$175.81 a month for 60 months | 60 Payments = \$10548.6 | RTO Charge: \$5801.6, 10x16 = \$186.33 a month for 60 months | 60 Payments = \$11179.8 | RTO Charge: \$6148.8, 10x18 = \$198.19 a month for 60 months | 60 Payments = \$11891.4 | RTO Charge: \$6540.4, 10x20 = \$209.67 a month for 60 months | 60 Payments = \$12580.2 | RTO Charge: \$6919.2, 12x12 = \$172.3 a month for 60 months | 60 Payments = \$10338 | RTO Charge: \$5588, 12x14 = \$188.78 a month for 60 months | 60 Payments = \$11326.8 | RTO Charge: \$6229.8, 12x16 = \$205.37 a month for 60 months | 60 Payments = \$12322.2 | RTO Charge: \$6777.2, 12x18 = \$220.81 a month for 60 months | 60 Payments = \$13248.6 | RTO Charge: \$7286.6, 12x20 = \$235.59 a month for 60 months | 60 Payments = \$14135.4 | RTO Charge: \$7774.4, 12x24 = \$265.22 a month for 60 months | 60 Payments = \$15913.2 | RTO Charge: \$8752.2, 12x28 = \$290.19 a month for 60 months | 60 Payments = \$17411.4 | RTO Charge: \$9576.4, 12x32 = \$326.07 a month for 60 months | 60 Payments = \$19564.2 | RTO Charge: \$10760.2, 12x36 = \$362.26 a month for 60 months | 60 Payments = \$21735.6 | RTO Charge: \$11954.6, 14x20 = \$258.3 a month for 60 months | 60 Payments = \$15498 | RTO Charge: \$8524, 14x24 = \$299.96 a month for 60 months | 60 Payments = \$17997.6 | RTO Charge: \$9898.6, 14x28 = \$330.67 a month for 60 months | 60 Payments = \$19840.2 | RTO Charge: \$10912.2, 14x32 = \$365.22 a month for 60 months | 60 Payments = \$21913.2 | RTO Charge: \$12052.2, 14x36 = \$401.19 a month for 60 months | 60 Payments = \$24071.4 | RTO Charge: \$13239.4, 14x40 = \$439.52 a month for 60 months | 60 Payments = \$26371.2 | RTO Charge: \$14504.2, 16x24 = \$358.85 a month for 60 months | 60 Payments = \$21531 | RTO Charge: \$11842, 16x28 = \$398 a month for 60 months | 60 Payments = \$23880 | RTO Charge: \$13134, 16x32 = \$435.33 a month for 60 months | 60 Payments = \$26119.8 | RTO Charge: \$14365.8, 16x36 = \$484.26 a month for 60 months | 60 Payments = \$29055.6 | RTO Charge: \$15980.6, 16x40 = \$530.93 a month for 60 months | 60 Payments = \$31855.8 | RTO Charge: \$17520.8, 16x44 = \$570.41 a month for 60 months | 60 Payments = \$34224.6 | RTO Charge: \$18823.6, 16x48 = \$621.85 a month for 60 months | 60 Payments = \$37311 | RTO Charge: \$20521

Visit www.CedarRockBarns.com For More Info, Pictures & To Place An Order

- Online Ordering Available At: www.CedarRockBarns.com - Purchase or Rent To Own - ©Cedar Rock Barns, LLC - February 2024 - All Rights Reserved





Dutch Barn

Approximate Height Based On A 10' Wide Building



Standard Vinyl Dutch Barn Includes: Double Doors, 2 - 21x27 Windows

Std. Double Doors: 8' Building: 56"x6' 10' Building: 60"x6' 12'; 14' & 16' Building: 72"x6'

Max Roll Up Size: 8' Building: 5'x6'4" 10' Building: 7'x7' 12' Building: 8'x7' 14' & 16' Building: 9'x7'

Swing Doors & Opt. 32" Pre-Hung Fit On All Walls

Optional Roll Up Will Fit On Gable Ends Only



Vinyl Dutch Barn

Size	Cash Price	RTO Starting At:
8x8	\$ 4,186.00	\$ 155.04 / Month*
8x10	\$ 4,426.00	\$ 163.93 / Month*
8x12	\$ 4,741.00	\$ 175.59 / Month*
8x14	\$ 5,021.00	\$ 185.96 / Month*
8x16	\$ 5,293.00	\$ 196.04 / Month*
10x10	\$ 4,833.00	\$ 179.00 / Month*
10x12	\$ 5,110.00	\$ 189.26 / Month*
10x14	\$ 5,495.00	\$ 203.52 / Month*
10x16	\$ 5,803.00	\$ 214.93 / Month*
10x18	\$ 6,167.00	\$ 228.41 / Month*
10x20	\$ 6,523.00	\$ 241.59 / Month*
12x12	\$ 5,367.00	\$ 198.78 / Month*
12x14	\$ 5,859.00	\$ 217.00 / Month*
12x16	\$ 6,356.00	\$ 235.41 / Month*
12x18	\$ 6,808.00	\$ 252.15 / Month*
12x20	\$ 7,523.00	\$ 278.63 / Month*
12x24	\$ 8,413.00	\$ 311.59 / Month*
12x28	\$ 9,258.00	\$ 342.89 / Month*
12x32	\$ 9,994.00	\$ 370.15 / Month*
12x36	\$ 10,731.00	\$ 397.44 / Month*
14x20	\$ 8,180.00	\$ 302.96 / Month*
14x24	\$ 9,378.00	\$ 347.33 / Month*
14x28	\$ 10,396.00	\$ 385.04 / Month*
14x32	\$ 11,478.00	\$ 425.11 / Month*
14x36	\$ 12,594.00	\$ 466.44 / Month*
14x40	\$ 13,672.00	\$ 506.37 / Month*
16x24	\$ 11,026.00	\$ 408.37 / Month*
16x28	\$ 12,326.00	\$ 456.52 / Month*
16x32	\$ 13,331.00	\$ 493.74 / Month*
16x36	\$ 14,737.00	\$ 545.81 / Month*
16x40	\$ 16,326.00	\$ 604.67 / Month*
16x44	\$ 17,502.00	\$ 648.22 / Month*
16x48	\$ 18,964.00	\$ 702.37 / Month*



Shown With Upgraded DET Doors, Single DET Door, & Flowerboxes

QP820

Siding: Juniper Ridge
Trim: Clay
Roof: Weatherwood



QP821

Siding: Monterey Sand
Trim: Terratone Bronze
Roof: Brown



Shown With: Sectional Overhead w/ windows, 1/2 Round Vents, Fiberglass Double Doors

QP822

Siding: Tuscan Clay
Trim: Clay
Roof: Brown



QP823

Siding: Tuscan Clay
Trim: Clay
Roof: Brown

Shown With: Upgraded DET Doors
6'x6'4" Roll Up Door

Popular Door Options	
Upgrade To DET w/ Transom	\$ 175.00
32" Pre-Hung Door w/ 9 Lite	\$ 467.00
36" Pre-Hung Door w/ 9 Lite	\$ 488.00
8x7 Sectional w/ Windows	\$ 1,150.00
9x7 Sectional w/ Windows	\$ 1,229.00
Flooring	
3/4" Treated Flooring (Sq. FT.)	\$ 1.32
Loft (1' x Building Width)	
8' Wide Building	\$ 31.52
10' Wide Buildings	\$ 39.40
12' Wide Buildings	\$ 47.28
14' Wide Buildings	\$ 66.22
16' Wide Buildings	\$ 75.68



10x20 Vinyl High Barn



View Additional Options & Color Choices On Pages 30-34



*This advertised transaction is a rental-purchase agreement (also referred to as an RTO agreement). The Total of All Payments does not include applicable taxes or optional fees and other charges (such as late charges) that you may incur. You will not own or obtain equity in the merchandise until the total amount necessary to acquire ownership is paid in full or you exercise your early purchase option. Ownership is optional. Delivery fees may apply. No Credit Needed does not mean or imply that no inquiry will be made of credit history or creditworthiness. We may check the past transactional history, but no established FICO score or credit history is necessary. Free Delivery applies to new standard sized buildings in zone 1. Additional fees may apply for oversized buildings and long / difficult deliveries. Advertised rental rates and terms are for new merchandise at participating locations. Prices not valid outside the State Of Michigan. Some Exclusions May Apply.

8x8 = \$155.04 a month for 60 months | 60 Payments = \$9302.4 | RTO Charge: \$5116.4, 8x10 = \$163.93 a month for 60 months | 60 Payments = \$9835.8 | RTO Charge: \$5409.8, 8x12 = \$175.59 a month for 60 months | 60 Payments = \$10535.4 | RTO Charge: \$5794.4, 8x14 = \$185.96 a month for 60 months | 60 Payments = \$11157.6 | RTO Charge: \$6136.6, 8x16 = \$196.04 a month for 60 months | 60 Payments = \$11762.4 | RTO Charge: \$6469.4, 10x10 = \$179.00 a month for 60 months | 60 Payments = \$10740 | RTO Charge: \$5907, 10x12 = \$189.26 a month for 60 months | 60 Payments = \$11355.6 | RTO Charge: \$6245.6, 10x14 = \$203.52 a month for 60 months | 60 Payments = \$12211.2 | RTO Charge: \$6716.2, 10x16 = \$214.93 a month for 60 months | 60 Payments = \$12895.8 | RTO Charge: \$7092.8, 10x18 = \$228.41 a month for 60 months | 60 Payments = \$13704.6 | RTO Charge: \$7537.6, 10x20 = \$241.59 a month for 60 months | 60 Payments = \$14495.4 | RTO Charge: \$7972.4, 12x12 = \$198.78 a month for 60 months | 60 Payments = \$11926.8 | RTO Charge: \$6559.8, 12x14 = \$217.00 a month for 60 months | 60 Payments = \$13020 | RTO Charge: \$7161, 12x16 = \$235.41 a month for 60 months | 60 Payments = \$14124.6 | RTO Charge: \$7768.6, 12x18 = \$252.15 a month for 60 months | 60 Payments = \$15129 | RTO Charge: \$8321, 12x20 = \$278.63 a month for 60 months | 60 Payments = \$16717.8 | RTO Charge: \$9194.8, 12x24 = \$311.59 a month for 60 months | 60 Payments = \$18695.4 | RTO Charge: \$10282.4, 12x28 = \$342.89 a month for 60 months | 60 Payments = \$20573.4 | RTO Charge: \$11315.4, 12x32 = \$370.15 a month for 60 months | 60 Payments = \$22209 | RTO Charge: \$12215, 12x36 = \$397.44 a month for 60 months | 60 Payments = \$23846.4 | RTO Charge: \$13115.4, 14x20 = \$302.96 a month for 60 months | 60 Payments = \$18177.6 | RTO Charge: \$9997.6, 14x24 = \$347.33 a month for 60 months | 60 Payments = \$20839.8 | RTO Charge: \$11461.8, 14x28 = \$385.04 a month for 60 months | 60 Payments = \$23102.4 | RTO Charge: \$12706.4, 14x32 = \$425.11 a month for 60 months | 60 Payments = \$25505.6 | RTO Charge: \$14028.6, 14x36 = \$466.44 a month for 60 months | 60 Payments = \$27986.4 | RTO Charge: \$15392.4, 14x40 = \$506.37 a month for 60 months | 60 Payments = \$30382.2 | RTO Charge: \$16710.2, 16x24 = \$408.37 a month for 60 months | 60 Payments = \$24502.2 | RTO Charge: \$13476.2, 16x28 = \$456.52 a month for 60 months | 60 Payments = \$27391.2 | RTO Charge: \$15065.2, 16x32 = \$493.74 a month for 60 months | 60 Payments = \$29624.4 | RTO Charge: \$16293.4, 16x36 = \$545.81 a month for 60 months | 60 Payments = \$32484.6 | RTO Charge: \$18011.6, 16x40 = \$604.67 a month for 60 months | 60 Payments = \$36280.2 | RTO Charge: \$19954.2, 16x44 = \$648.22 a month for 60 months | 60 Payments = \$38893.2 | RTO Charge: \$21391.2, 16x48 = \$702.37 a month for 60 months | 60 Payments = \$42142.2 | RTO Charge: \$23178.2



Visit www.CedarRockBarns.com For More Info, Pictures & To Place An Order

Online Ordering Available At: www.CedarRockBarns.com - Purchase or Rent To Own - ©Cedar Rock Barns, LLC - February 2024 - All Rights Reserved -



Dutch Barn

*Approximate Height Based Off A 14' Wide Building



Standard Painted High Barn Includes: Double Doors, 2 - 21x27 Windows

Std. Double Doors: 8' Building: 56"x6' 10' Building: 60"x6' 12', 14' & 16' Building: 72"x6'

Max Roll Up Size: 8' Building: 5'x6'4" 10' Building: 7'x7' 12' Building: 8'x7' 14' & 16' Building: 9'x7'

Swing Doors & Opt. 32" Pre-Hung Fit On All Walls

Optional Roll Up Will Fit On Gable Ends Only



QP816

Siding: Clay
Trim: Almond
Roof: Weatherwood



QP817

Shown With: Deluxe Window Trim & Upgraded DET w/ Transom
Siding: Gray
Trim: White
Roof: Charcoal Gray



QP818

Siding: Navy Blue
Trim: White
Roof: Charcoal Gray

Loft (1' x Building Width)	
8' Wide Building	\$ 31.52
10' Wide Buildings	\$ 39.40
12' Wide Buildings	\$ 47.28
14' Wide Buildings	\$ 66.22
16' Wide Buildings	\$ 75.68
Ramp	
Up To 6' Wide	\$ 147.00
3' x 84" Ramp	\$ 163.00
3' x 96" Ramp	\$ 179.00
3' x 108" Ramp	\$ 194.00
Roll Up Doors	
5'x6'4" Roll Up	\$ 683.00
6'x6'4" Roll Up	\$ 735.00
7'x7' Roll Up	\$ 798.00
8'x7' Roll Up	\$ 830.00
9'x7' Roll Up	\$ 851.00



QP819

Siding: Gray
Trim: Cape Cod Gray
Roof: Charcoal Gray

Shown With: 4' Porch Option & Additional 21x27 Window



12x24 Painted Dutch Barn

Painted Dutch Barn

Size	Cash Price	RTO Starting At:
8x8	\$ 3,757.00	\$ 139.15 / Month*
8x10	\$ 3,986.00	\$ 147.63 / Month*
8x12	\$ 4,316.00	\$ 159.85 / Month*
8x14	\$ 4,599.00	\$ 170.33 / Month*
8x16	\$ 4,876.00	\$ 180.59 / Month*
10x10	\$ 4,362.00	\$ 161.56 / Month*
10x12	\$ 4,640.00	\$ 171.85 / Month*
10x14	\$ 5,027.00	\$ 186.19 / Month*
10x16	\$ 5,351.00	\$ 198.19 / Month*
10x18	\$ 5,717.00	\$ 211.74 / Month*
10x20	\$ 6,072.00	\$ 224.89 / Month*
12x12	\$ 4,784.00	\$ 177.19 / Month*
12x14	\$ 5,265.00	\$ 195.00 / Month*
12x16	\$ 5,750.00	\$ 212.96 / Month*
12x18	\$ 6,219.00	\$ 230.33 / Month*
12x20	\$ 6,899.00	\$ 255.52 / Month*
12x24	\$ 7,781.00	\$ 288.19 / Month*
12x28	\$ 8,603.00	\$ 318.63 / Month*
12x32	\$ 9,295.00	\$ 344.26 / Month*
12x36	\$ 10,036.00	\$ 371.70 / Month*
14x20	\$ 7,411.00	\$ 274.48 / Month*
14x24	\$ 8,548.00	\$ 316.59 / Month*
14x28	\$ 9,517.00	\$ 352.48 / Month*
14x32	\$ 10,544.00	\$ 390.52 / Month*
14x36	\$ 11,605.00	\$ 429.81 / Month*
14x40	\$ 12,628.00	\$ 467.70 / Month*
16x24	\$ 10,469.00	\$ 387.74 / Month*
16x28	\$ 11,525.00	\$ 426.85 / Month*
16x32	\$ 12,508.00	\$ 463.26 / Month*
16x36	\$ 13,867.00	\$ 513.59 / Month*
16x40	\$ 15,090.00	\$ 558.89 / Month*
16x44	\$ 16,223.00	\$ 600.85 / Month*
16x48	\$ 17,606.00	\$ 652.07 / Month*



View Additional Options & Color Choices On Pages 30-34



*This advertised transaction is a rental-purchase agreement (also referred to as an RTO agreement). The Total of All Payments does not include applicable taxes or optional fees and other charges (such as late charges) that you may incur. You will not own or obtain equity in the merchandise until the total amount necessary to acquire ownership is paid in full or you exercise your early purchase option. Ownership is optional. Delivery fees may apply. No Credit Needed does not mean or imply that no inquiry will be made of credit history or creditworthiness. We may check the past transactional history, but no established FICO score or credit history is necessary. Free

Delivery applies to new standard sized buildings in zone 1. Additional fees may apply for oversized buildings and long / difficult deliveries. Advertised rental rates and terms are for new merchandise at participating locations. Prices not valid outside the State Of Michigan, Some Exclusions May Apply.
8x8 = \$139.15 a month for 60 months | 60 Payments = \$8349 | RTO Charge: \$4592, 8x10 = \$147.63 a month for 60 months | 60 Payments = \$8857.8 | RTO Charge: \$4871.8, 8x12 = \$159.85 a month for 60 months | 60 Payments = \$9591 | RTO Charge: \$5275, 8x14 = \$170.33 a month for 60 months | 60 Payments = \$10219.8 | RTO Charge: \$5620.8, 8x16 = \$180.59 a month for 60 months | 60 Payments = \$10835.4 | RTO Charge: \$5959.4, 10x10 = \$161.56 a month for 60 months | 60 Payments = \$9693.6 | RTO Charge: \$5331.6, 10x12 = \$171.85 a month for 60 months | 60 Payments = \$10311 | RTO Charge: \$5671, 10x14 = \$186.19 a month for 60 months | 60 Payments = \$11171.4 | RTO Charge: \$6144.4, 10x16 = \$198.19 a month for 60 months | 60 Payments = \$11891.4 | RTO Charge: \$6540.4, 10x18 = \$211.74 a month for 60 months | 60 Payments = \$12704.4 | RTO Charge: \$6987.4, 10x20 = \$224.89 a month for 60 months | 60 Payments = \$13493.4 | RTO Charge: \$7421.4, 12x12 = \$177.19 a month for 60 months | 60 Payments = \$10631.4 | RTO Charge: \$5847.4, 12x14 = \$195.00 a month for 60 months | 60 Payments = \$11700 | RTO Charge: \$6435, 12x16 = \$212.96 a month for 60 months | 60 Payments = \$12776.6 | RTO Charge: \$7027.6, 12x18 = \$230.33 a month for 60 months | 60 Payments = \$13819.8 | RTO Charge: \$7600.8, 12x20 = \$255.52 a month for 60 months | 60 Payments = \$15331.2 | RTO Charge: \$8432.2, 12x24 = \$288.19 a month for 60 months | 60 Payments = \$17291.4 | RTO Charge: \$9510.4, 12x28 = \$318.63 a month for 60 months | 60 Payments = \$19177.8 | RTO Charge: \$10514.8, 12x32 = \$344.26 a month for 60 months | 60 Payments = \$20655.6 | RTO Charge: \$11360.6, 12x36 = \$371.70 a month for 60 months | 60 Payments = \$22302 | RTO Charge: \$12266, 14x20 = \$274.48 a month for 60 months | 60 Payments = \$16468.8 | RTO Charge: \$9057.8, 14x24 = \$316.59 a month for 60 months | 60 Payments = \$18995.4 | RTO Charge: \$10447.4, 14x28 = \$352.48 a month for 60 months | 60 Payments = \$21148.8 | RTO Charge: \$11631.8, 14x32 = \$390.52 a month for 60 months | 60 Payments = \$23431.2 | RTO Charge: \$12887.2, 14x36 = \$429.81 a month for 60 months | 60 Payments = \$25788.6 | RTO Charge: \$14183.6, 14x40 = \$467.70 a month for 60 months | 60 Payments = \$28062 | RTO Charge: \$15434, 16x24 = \$387.74 a month for 60 months | 60 Payments = \$23264.4 | RTO Charge: \$12795.4, 16x28 = \$426.85 a month for 60 months | 60 Payments = \$25611 | RTO Charge: \$14086, 16x32 = \$463.26 a month for 60 months | 60 Payments = \$27795.6 | RTO Charge: \$15287.6, 16x36 = \$513.59 a month for 60 months | 60 Payments = \$30815.4 | RTO Charge: \$16948.4, 16x40 = \$558.89 a month for 60 months | 60 Payments = \$33533.4 | RTO Charge: \$18443.4, 16x44 = \$600.85 a month for 60 months | 60 Payments = \$36051 | RTO Charge: \$19828, 16x48 = \$652.07 a month for 60 months | 60 Payments = \$39124.2 | RTO Charge: \$21518.2

Visit www.CedarRockBarns.com For More Info, Pictures & To Place An Order





Cottage



Standard Vinyl High Barn Includes: Roll Up Door

Std. Roll Up Door: 8' Building: 5'x6'4" 10' Building: 5'x6'4" 12' Building: 6'x6'4" 14' & 16' Building: 7'x7'

Max Roll Up Size: 8' Building: 5'x6'4" 10' Building: 6'x6'4" 12' Building: 8'x7' 14' & 16' Building: 9'x7'

Swing Doors Will Fit On All Walls / 5' & 6' Roll Up Will Fit On All Walls

STD. Vinyl Cottage



QP828

Siding: Tuscan Clay
Trim: Brown
Roof: Brown



STD. Vinyl Cottage

QP829

Siding: Cape Cod Gray
Trim: White
Roof: Black



Vinyl Cottage

Size	Cash Price	RTO Starting At:
8x8	\$ 4,170.00	\$ 154.44 / Month*
8x10	\$ 4,344.00	\$ 160.89 / Month*
8x12	\$ 4,475.00	\$ 165.74 / Month*
8x14	\$ 4,771.00	\$ 176.70 / Month*
8x16	\$ 4,977.00	\$ 184.33 / Month*
10x10	\$ 4,422.00	\$ 163.78 / Month*
10x12	\$ 4,765.00	\$ 176.48 / Month*
10x14	\$ 5,170.00	\$ 191.48 / Month*
10x16	\$ 5,660.00	\$ 209.63 / Month*
10x18	\$ 6,152.00	\$ 227.85 / Month*
10x20	\$ 6,634.00	\$ 245.70 / Month*
12x12	\$ 5,376.00	\$ 199.11 / Month*
12x14	\$ 6,048.00	\$ 224.00 / Month*
12x16	\$ 6,509.00	\$ 241.07 / Month*
12x18	\$ 7,061.00	\$ 261.52 / Month*
12x20	\$ 7,603.00	\$ 281.59 / Month*
12x24	\$ 8,740.00	\$ 323.70 / Month*
12x28	\$ 9,865.00	\$ 365.37 / Month*
12x32	\$ 10,992.00	\$ 407.11 / Month*
12x36	\$ 11,744.00	\$ 434.96 / Month*
14x20	\$ 8,319.00	\$ 308.11 / Month*
14x24	\$ 9,504.00	\$ 352.00 / Month*
14x28	\$ 10,840.00	\$ 401.48 / Month*
14x32	\$ 12,069.00	\$ 447.00 / Month*
14x36	\$ 13,293.00	\$ 492.33 / Month*
14x40	\$ 14,634.00	\$ 542.00 / Month*
16x24	\$ 10,815.00	\$ 400.56 / Month*
16x28	\$ 11,931.00	\$ 441.89 / Month*
16x32	\$ 12,922.00	\$ 478.59 / Month*
16x36	\$ 14,338.00	\$ 531.04 / Month*
16x40	\$ 15,651.00	\$ 579.67 / Month*
16x44	\$ 16,973.00	\$ 628.63 / Month*
16x48	\$ 18,407.00	\$ 681.74 / Month*

Add The Deluxe Package For 10% Of The Base Price!

- 4" Roof Overhang w/ MiraTEC Trim
- Upgrade Std. Swing Doors to Duratemp w/ Transom
- 1/2 Round Vents On Gable Ends
- MiraTEC Trim on Roof Line/ Corners / Doors / Windows (When Available)
- Architectural Shingles (30 Year)
- 3 Color Combination

Deluxe Vinyl Cottage

w/ DET Doors & 3 - 24"x36" Windows



QP830

Siding: Canyon Drift
Trim: White
Roof: Dual Brown

Deluxe Vinyl Cottage

w/ DET Doors & 2 - 21"x27" Windows



QP831

Siding: Mountain Fern
Trim: Gray
Roof: Black



12x16 Vinyl Cottage w/ Deluxe

Popular Door Options	
Upgrade To DET w/ Transom	\$ 175.00
36" Pre-Hung Door w/ 9 Lite	\$ 488.00
72" 9-Lite French Door	\$ 1,087.00
6' Sliding Patio Door	\$ 1,202.00
Windows	
21x27 Window	\$ 105.00
24x36 Window	\$ 152.00
24x36 Insulated Window	\$ 299.00
48x36 Insulated Window	\$ 352.00
Ramps	
Up To 6' Wide	\$ 147.00
3' x 84" Ramp	\$ 163.00
3' x 96" Ramp	\$ 179.00
3' x 108" Ramp	\$ 194.00

View Additional Options & Color Choices On Pages 30-34

*This advertised transaction is a rental-purchase agreement (also referred to as an RTO agreement). The Total of All Payments does not include applicable taxes or optional fees and other charges (such as late charges) that you may incur. You will not own or obtain equity in the merchandise until the total amount necessary to acquire ownership is paid in full or you exercise your early purchase option. Ownership is optional. Delivery fees may apply. No Credit Needed does not mean or imply that no inquiry will be made of credit history or creditworthiness. We may check the past transactional history, but no established FICO score or credit history is necessary. Free Delivery applies to new standard sized buildings in zone 1. Additional fees may apply for oversized buildings and long / difficult deliveries. Advertised rental rates and terms are for new merchandise at participating locations. Prices not valid outside the State Of Michigan, Some Exclusions May Apply.

8x8 = \$154.44 a month for 60 months | 60 Payments = \$9266.4 | RTO Charge: \$5096.4, 8x10 = \$160.89 a month for 60 months | 60 Payments = \$9653.4 | RTO Charge: \$5309.4, 8x12 = \$165.74 a month for 60 months | 60 Payments = \$9944.4 | RTO Charge: \$5469.4, 8x14 = \$176.7 a month for 60 months | 60 Payments = \$10602 | RTO Charge: \$5831, 8x16 = \$184.33 a month for 60 months | 60 Payments = \$11059.8 | RTO Charge: \$6082.8, 10x10 = \$163.78 a month for 60 months | 60 Payments = \$9826.8 | RTO Charge: \$5404.8, 10x12 = \$176.48 a month for 60 months | 60 Payments = \$10588.8 | RTO Charge: \$5823.8, 10x14 = \$191.48 a month for 60 months | 60 Payments = \$11488.8 | RTO Charge: \$6318.8, 10x16 = \$209.63 a month for 60 months | 60 Payments = \$12577.8 | RTO Charge: \$6917.8, 10x18 = \$227.85 a month for 60 months | 60 Payments = \$13671 | RTO Charge: \$7519, 10x20 = \$245.7 a month for 60 months | 60 Payments = \$14742 | RTO Charge: \$8108, 12x12 = \$199.11 a month for 60 months | 60 Payments = \$11946.6 | RTO Charge: \$6570.6, 12x14 = \$224 a month for 60 months | 60 Payments = \$13440 | RTO Charge: \$7392, 12x16 = \$241.07 a month for 60 months | 60 Payments = \$14464.2 | RTO Charge: \$7955.2, 12x18 = \$261.52 a month for 60 months | 60 Payments = \$15691.2 | RTO Charge: \$8630.2, 12x20 = \$281.59 a month for 60 months | 60 Payments = \$16895.4 | RTO Charge: \$9292.4, 12x24 = \$323.7 a month for 60 months | 60 Payments = \$19422 | RTO Charge: \$10682, 12x28 = \$365.37 a month for 60 months | 60 Payments = \$21922.2 | RTO Charge: \$12057.2, 12x32 = \$407.11 a month for 60 months | 60 Payments = \$24426.6 | RTO Charge: \$13434.6, 12x36 = \$434.96 a month for 60 months | 60 Payments = \$26097.6 | RTO Charge: \$14353.6, 14x20 = \$308.11 a month for 60 months | 60 Payments = \$18486.6 | RTO Charge: \$10167.6, 14x24 = \$352 a month for 60 months | 60 Payments = \$21120 | RTO Charge: \$11616, 14x28 = \$401.48 a month for 60 months | 60 Payments = \$24088.8 | RTO Charge: \$13248.8, 14x32 = \$447 a month for 60 months | 60 Payments = \$26820 | RTO Charge: \$14751, 14x36 = \$492.33 a month for 60 months | 60 Payments = \$29539.8 | RTO Charge: \$16246.8, 14x40 = \$542 a month for 60 months | 60 Payments = \$32520 | RTO Charge: \$17886, 16x24 = \$400.56 a month for 60 months | 60 Payments = \$24033.6 | RTO Charge: \$13218.6, 16x28 = \$441.89 a month for 60 months | 60 Payments = \$26513.4 | RTO Charge: \$14582.4, 16x32 = \$478.59 a month for 60 months | 60 Payments = \$28715.4 | RTO Charge: \$15793.4, 16x36 = \$531.04 a month for 60 months | 60 Payments = \$31862.4 | RTO Charge: \$17524.4, 16x40 = \$579.67 a month for 60 months | 60 Payments = \$34780.2 | RTO Charge: \$19129.2, 16x44 = \$628.63 a month for 60 months | 60 Payments = \$37717.8 | RTO Charge: \$20744.8, 16x48 = \$681.74 a month for 60 months | 60 Payments = \$40904.4 | RTO Charge: \$22497.4



Visit www.CedarRockBarns.com For More Info, Pictures & To Place An Order

- Online Ordering Available At: www.CedarRockBarns.com - Purchase or Rent To Own - ©Cedar Rock Barns, LLC - February 2024 - All Rights Reserved -



Cottage



Standard Painted Cottage Includes: Double Doors

*Approximate Height Based Off A 10' Wide Building

Std. Double Doors: 8' Building: 5'6"x6' 10' Building: 6'0"x6' 12', 14' & 16' Building: 7'2"x6'

Max Roll Up Size: 8' Building: 5'x6'4" 10' Building: 6'x6'4" 12' Building: 8'x7' 14' & 16' Building: 9'x7'

Swing Doors Will Fit On All Walls / 5' & 6' Roll Up Will Fit On All Walls



Painted Cottage

Size	Cash Price	RTO Starting At:
8x8	\$ 3,687.00	\$ 136.56 / Month*
8x10	\$ 3,863.00	\$ 143.07 / Month*
8x12	\$ 3,994.00	\$ 147.93 / Month*
8x14	\$ 4,297.00	\$ 159.15 / Month*
8x16	\$ 4,503.00	\$ 166.78 / Month*
10x10	\$ 3,944.00	\$ 146.07 / Month*
10x12	\$ 4,290.00	\$ 158.89 / Month*
10x14	\$ 4,700.00	\$ 174.07 / Month*
10x16	\$ 5,194.00	\$ 192.37 / Month*
10x18	\$ 5,693.00	\$ 210.85 / Month*
10x20	\$ 6,178.00	\$ 228.81 / Month*
12x12	\$ 4,787.00	\$ 177.30 / Month*
12x14	\$ 5,185.00	\$ 192.04 / Month*
12x16	\$ 5,608.00	\$ 207.70 / Month*
12x18	\$ 6,062.00	\$ 224.52 / Month*
12x20	\$ 6,495.00	\$ 240.56 / Month*
12x24	\$ 7,373.00	\$ 273.07 / Month*
12x28	\$ 8,243.00	\$ 305.30 / Month*
12x32	\$ 9,125.00	\$ 337.96 / Month*
12x36	\$ 10,036.00	\$ 371.70 / Month*
14x20	\$ 7,169.00	\$ 265.52 / Month*
14x24	\$ 7,723.00	\$ 286.04 / Month*
14x28	\$ 9,205.00	\$ 340.93 / Month*
14x32	\$ 10,219.00	\$ 378.48 / Month*
14x36	\$ 10,960.00	\$ 405.93 / Month*
14x40	\$ 12,259.00	\$ 454.04 / Month*
16x24	\$ 10,103.00	\$ 374.19 / Month*
16x28	\$ 11,147.00	\$ 412.85 / Month*
16x32	\$ 12,194.00	\$ 451.63 / Month*
16x36	\$ 13,385.00	\$ 495.74 / Month*
16x40	\$ 14,622.00	\$ 541.56 / Month*
16x44	\$ 15,755.00	\$ 583.52 / Month*
16x48	\$ 17,140.00	\$ 634.81 / Month*



QP824

Siding: Navajo White
Trim: Red
Roof: Weatherwood

Shown W/ Upgraded
DET Doors



QP825

Siding: Clay
Trim: Brown
Roof: Brown

Add The Deluxe Package For 10% Of The Base Price!

- 4" Roof Overhang w/ MiraTEC Trim
- Upgrade Std. Swing Doors to Duratemp w/ Transom
- 1/2 Round Vents On Gable Ends
- MiraTEC Trim on Roof Line/ Corners / Doors / Windows
- Architectural Shingles (30 Year)
- 3 Color Combination

Deluxe Painted Cottage

w/ 2 - 21"x27" Windows



QP826

Siding: Coastal Sage
Trim: Navajo White
Roof: Brown

Deluxe Painted Cottage

w/ 2 - 24"x36" Windows



QP827

Siding: Monterey Sand
Trim: White
Roof: Weatherwood

Popular Door Options

Upgrade To DET w/ Transom	\$ 175.00
36" Pre-Hung Door w/ 9 Lite	\$ 488.00
6'x6'4" Roll Up	\$ 735.00
8'x7' Roll Up	\$ 830.00

Windows

21x27 Window	\$ 105.00
24x36 Window	\$ 152.00
24x36 Insulated Window	\$ 299.00
48x36 Insulated Window	\$ 352.00



10x18 Painted Cottage

View Additional Options & Color Choices On Pages 30-34

*This advertised transaction is a rental-purchase agreement (also referred to as an RTO agreement). The Total of All Payments does not include applicable taxes or optional fees and other charges (such as late charges) that you may incur. You will not own or obtain equity in the merchandise until the total amount necessary to acquire ownership is paid in full or you exercise your early purchase option. Ownership is optional. Delivery fees may apply. No Credit Needed does not mean or imply that no inquiry will be made of credit history or creditworthiness. We may check the past transactional history, but no established FICO score or credit history is necessary. Free Delivery applies to new standard sized buildings in zone 1. Additional fees may apply for oversized buildings and long / difficult deliveries. Advertised rental rates and terms are for new merchandise at participating locations. Prices not valid outside the State Of Michigan, Some Exclusions May Apply.

8x8 = \$136.56 a month for 60 months | 60 Payments = \$8193.6 | RTO Charge: \$4506.6, 8x10 = \$143.07 a month for 60 months | 60 Payments = \$8584.2 | RTO Charge: \$4721.2, 8x12 = \$147.93 a month for 60 months | 60 Payments = \$8875.8 | RTO Charge: \$4881.8, 8x14 = \$159.15 a month for 60 months | 60 Payments = \$9549 | RTO Charge: \$5252, 8x16 = \$166.78 a month for 60 months | 60 Payments = \$10006.8 | RTO Charge: \$5503.8, 10x10 = \$146.07 a month for 60 months | 60 Payments = \$8764.2 | RTO Charge: \$4820.2, 10x12 = \$158.89 a month for 60 months | 60 Payments = \$9533.4 | RTO Charge: \$5243.4, 10x14 = \$174.07 a month for 60 months | 60 Payments = \$10444.2 | RTO Charge: \$5744.2, 10x16 = \$192.37 a month for 60 months | 60 Payments = \$11542.2 | RTO Charge: \$6348.2, 10x18 = \$210.85 a month for 60 months | 60 Payments = \$12651 | RTO Charge: \$6956, 10x20 = \$228.81 a month for 60 months | 60 Payments = \$13728.6 | RTO Charge: \$7550.6, 12x12 = \$177.30 a month for 60 months | 60 Payments = \$10638 | RTO Charge: \$5851, 12x14 = \$192.04 a month for 60 months | 60 Payments = \$11522.4 | RTO Charge: \$6337.4, 12x16 = \$207.70 a month for 60 months | 60 Payments = \$12462 | RTO Charge: \$6854, 12x18 = \$224.52 a month for 60 months | 60 Payments = \$13471.2 | RTO Charge: \$7409.2, 12x20 = \$240.56 a month for 60 months | 60 Payments = \$14433.4 | RTO Charge: \$7938.6, 12x24 = \$273.07 a month for 60 months | 60 Payments = \$16384.2 | RTO Charge: \$9011.2, 12x28 = \$305.30 a month for 60 months | 60 Payments = \$18318 | RTO Charge: \$10075, 12x32 = \$337.96 a month for 60 months | 60 Payments = \$20277.6 | RTO Charge: \$11152.6, 12x36 = \$371.70 a month for 60 months | 60 Payments = \$22302 | RTO Charge: \$12266, 14x20 = \$265.52 a month for 60 months | 60 Payments = \$15931.2 | RTO Charge: \$8762.2, 14x24 = \$286.04 a month for 60 months | 60 Payments = \$17162.4 | RTO Charge: \$9439.4, 14x28 = \$340.93 a month for 60 months | 60 Payments = \$20455.8 | RTO Charge: \$11250.8, 14x32 = \$378.48 a month for 60 months | 60 Payments = \$22708.8 | RTO Charge: \$12489.8, 14x36 = \$405.93 a month for 60 months | 60 Payments = \$24355.8 | RTO Charge: \$13395.8, 14x40 = \$454.04 a month for 60 months | 60 Payments = \$27242.4 | RTO Charge: \$14983.4, 16x24 = \$374.19 a month for 60 months | 60 Payments = \$22451.4 | RTO Charge: \$12348.4, 16x28 = \$412.85 a month for 60 months | 60 Payments = \$24771 | RTO Charge: \$13624, 16x32 = \$451.63 a month for 60 months | 60 Payments = \$27097.8 | RTO Charge: \$14903.8, 16x36 = \$495.74 a month for 60 months | 60 Payments = \$29744.4 | RTO Charge: \$16359.4, 16x40 = \$541.56 a month for 60 months | 60 Payments = \$32493.6 | RTO Charge: \$17871.6, 16x44 = \$583.52 a month for 60 months | 60 Payments = \$35011.2 | RTO Charge: \$19256.2, 16x48 = \$634.81 a month for 60 months | 60 Payments = \$38086.6 | RTO Charge: \$20948.6

Visit www.CedarRockBarns.com For More Info, Pictures & To Place An Order

- Online Ordering Available At: www.CedarRockBarns.com - Purchase or Rent To Own - ©Cedar Rock Barns, LLC - February 2024 - All Rights Reserved





Garage



Standard Vinyl Garage Includes: Roll Up Door

Std. Roll Up Door: 12', 14' & 16' Buildings: 8'x7'
Max Roll Up Size: 12' Building: 8'x7' 14' & 16' Buildings: 9'x7'
Swing Doors Will Fit On All Walls / 5' & 6' Roll Up Will Fit On All Walls

*Approximate Height Based Off A 10' Wide Building



Ramps	
3' x 96" Ramp - 2x6 Decking	\$ 179.00
3' x 108" Ramp - 2x6 Decking	\$ 194.00
Sectional Door	
8x7 Sectional w/ Windows	\$1,150.00
Pre-Hung Doors	
36" Pre-Hung Door w/ 9 Lite	\$ 488.00
36" Solid Pre-Hung Door	\$ 452.00
72" Full View Door	\$1,150.00



w/ 21"x27" Window & Ramp

Siding: Cape Cod Gray
Trim: White Shingles: Black

QP837

Vinyl Garage

Size	Cash Price	RTO Starting At:	
12x16	\$ 6,872.00	\$ 254.52	/ Month*
12x18	\$ 7,468.00	\$ 276.59	/ Month*
12x20	\$ 8,050.00	\$ 298.15	/ Month*
12x24	\$ 9,265.00	\$ 343.15	/ Month*
12x28	\$10,465.00	\$ 387.59	/ Month*
12x32	\$11,673.00	\$ 432.33	/ Month*
12x36	\$12,504.00	\$ 463.11	/ Month*
14x20	\$ 8,865.00	\$ 328.33	/ Month*
14x24	\$10,146.00	\$ 375.78	/ Month*
14x28	\$11,576.00	\$ 428.74	/ Month*
14x32	\$12,899.00	\$ 477.74	/ Month*
14x36	\$14,216.00	\$ 526.52	/ Month*
14x40	\$15,623.00	\$ 578.63	/ Month*
16x24	\$11,558.00	\$ 428.07	/ Month*
16x28	\$12,697.00	\$ 470.26	/ Month*
16x32	\$13,890.00	\$ 514.44	/ Month*
16x36	\$15,267.00	\$ 565.44	/ Month*
16x40	\$16,858.00	\$ 624.37	/ Month*
16x44	\$18,299.00	\$ 677.74	/ Month*
16x48	\$20,021.00	\$ 741.52	/ Month*

Add The Deluxe Package For 10% Of The Base Price!

- 4" Roof Overhang w/ MiraTEC Trim
- Upgrade Std. Swing Doors to Duratemp w/ Transom
- 1/2 Round Vents On Gable Ends
- MiraTEC Trim on Roof Line/ Corners / Doors / Windows
- Architectural Shingles (30 Year)
- 3 Color Combination



Deluxe Vinyl Garage

w/ Metal Roof, 34" Duratemp w/ Trans.
2 - 24"x36" Windows

QP838

Siding: Cape Cod Gray Trim: Gray
Metal Roof: Pewter Gray



16x36 Vinyl Garage



QP839

16x36 Vinyl Garage w/ Sectional Door,
French 9 Lite Doors, 6 - 36"x48" Insulated
Windows



View Additional Options & Color Choices On Pages 30-34



*This advertised transaction is a rental-purchase agreement (also referred to as an RTO agreement). The Total of All Payments does not include applicable taxes or optional fees and other charges (such as late charges) that you may incur. You will not own or obtain equity in the merchandise until the total amount necessary to acquire ownership is paid in full or you exercise your early purchase option. Ownership is optional. Delivery fees may apply. No Credit Needed does not mean or imply that no inquiry will be made of credit history or creditworthiness. We may check the past transactional history, but no established FICO score or credit history is necessary. Free Delivery applies to new standard sized buildings in zone 1. Additional fees may apply for oversized buildings and long / difficult deliveries. Advertised rental rates and terms are for new merchandise at participating locations. Prices not valid outside the State Of Michigan. Some Exclusions May Apply.

12x16 = \$254.52 a month for 60 months | 60 Payments = \$15271.2 | RTO Charge: \$8399.2, 12x18 = \$276.59 a month for 60 months | 60 Payments = \$16595.4 | RTO Charge: \$9127.4, 12x20 = \$298.15 a month for 60 months | 60 Payments = \$17889 | RTO Charge: \$9839, 12x24 = \$343.15 a month for 60 months | 60 Payments = \$20589 | RTO Charge: \$11324, 12x28 = \$387.59 a month for 60 months | 60 Payments = \$23255.4 | RTO Charge: \$12790.4, 12x32 = \$432.33 a month for 60 months | 60 Payments = \$25939.8 | RTO Charge: \$14266.8, 12x36 = \$463.11 a month for 60 months | 60 Payments = \$27786.6 | RTO Charge: \$15282.6, 14x20 = \$328.33 a month for 60 months | 60 Payments = \$19699.8 | RTO Charge: \$10834.8, 14x24 = \$375.78 a month for 60 months | 60 Payments = \$22546.8 | RTO Charge: \$12400.8, 14x28 = \$428.74 a month for 60 months | 60 Payments = \$25724.4 | RTO Charge: \$14148.4, 14x32 = \$477.74 a month for 60 months | 60 Payments = \$28664.4 | RTO Charge: \$15785.4, 14x36 = \$526.52 a month for 60 months | 60 Payments = \$31591.2 | RTO Charge: \$17375.2, 14x40 = \$578.63 a month for 60 months | 60 Payments = \$34717.8 | RTO Charge: \$19094.8, 16x24 = \$428.07 a month for 60 months | 60 Payments = \$25684.2 | RTO Charge: \$14126.2, 16x28 = \$470.26 a month for 60 months | 60 Payments = \$28215.6 | RTO Charge: \$15518.6, 16x32 = \$514.44 a month for 60 months | 60 Payments = \$30866.4 | RTO Charge: \$16976.4, 16x36 = \$565.44 a month for 60 months | 60 Payments = \$33926.4 | RTO Charge: \$18659.4, 16x40 = \$624.37 a month for 60 months | 60 Payments = \$37462.2 | RTO Charge: \$20604.2, 16x44 = \$677.74 a month for 60 months | 60 Payments = \$40664.4 | RTO Charge: \$22365.4, 16x48 = \$741.52 a month for 60 months | 60 Payments = \$44491.2 | RTO Charge: \$24470.2,



Visit www.CedarRockBarns.com For More Info, Pictures & To Place An Order

Online Ordering Available At: www.CedarRockBarns.com - Purchase or Rent To Own - ©Cedar Rock Barns, LLC - February 2024 - All Rights Reserved -



Garage



Standard Painted Garage Includes: Roll Up Door

Std. Roll Up Door: 12', 14' & 16' Buildings: 8'x7'

Max Roll Up Size: 12' Building: 8'x7' 14' & 16' Buildings: 9'x7'

Swing Doors Will Fit On All Walls / 5' & 6' Roll Up Will Fit On All Walls

*Approximate Height Based Off A 10' Wide Building



Painted Garage

Size	Cash Price	RTO Starting At:
12x16	\$ 6,430.00	\$ 238.15 / Month*
12x18	\$ 6,922.00	\$ 256.37 / Month*
12x20	\$ 7,396.00	\$ 273.93 / Month*
12x24	\$ 8,351.00	\$ 309.30 / Month*
12x28	\$ 9,298.00	\$ 344.37 / Month*
12x32	\$ 10,257.00	\$ 379.89 / Month*
12x36	\$ 11,247.00	\$ 416.56 / Month*
14x20	\$ 8,166.00	\$ 302.44 / Month*
14x24	\$ 8,812.00	\$ 326.37 / Month*
14x28	\$ 10,379.00	\$ 384.41 / Month*
14x32	\$ 11,488.00	\$ 425.48 / Month*
14x36	\$ 12,378.00	\$ 458.44 / Month*
14x40	\$ 13,705.00	\$ 507.59 / Month*
16x24	\$ 10,810.00	\$ 400.37 / Month*
16x28	\$ 11,876.00	\$ 439.85 / Month*
16x32	\$ 13,112.00	\$ 485.63 / Month*
16x36	\$ 14,371.00	\$ 532.26 / Month*
16x40	\$ 15,869.00	\$ 587.74 / Month*
16x44	\$ 17,106.00	\$ 633.56 / Month*
16x48	\$ 18,777.00	\$ 695.44 / Month*

Shown With: Single DET Door & 2 - 21"x27" Windows



Siding: Gray
Trim: Almond
Roof: Brown
QP832



Siding: Gray
Trim: White
Roof: Charcoal Gray
QP833

Add The Deluxe Package For 10% Of The Base Price!

- 4" Roof Overhang w/ MiraTEC Trim
- Upgrade Std. Swing Doors to Duratemp w/ Transom
- 1/2 Round Vents On Gable Ends
- MiraTEC Trim on Roof Line/ Corners / Doors / Windows
- Architectural Shingles (30 Year)
- 3 Color Combination

Deluxe Painted Garage



Siding: Gray
Trim: White
Roof: Black
QP834

Deluxe Painted Garage



QP835

Siding: Jamestown Red
Trim: White
Roof: Black

Popular Door Options	
36" DET w/ Transom	\$ 280.00
DET Double Doors w/ Transom	\$ 475.00
72" 9-Lite French Door	\$ 1,087.00
6' Sliding Patio Door	\$ 1,202.00
36" Pre-Hung Door w/ 9 Lite	\$ 488.00
9x7 Sectional w/ Windows	\$ 1,229.00
Windows	
21x27 Window	\$ 105.00
24x36 Window	\$ 152.00
30x36 Window	\$ 173.00
24x36 Insulated Window	\$ 299.00
48x36 Insulated Window	\$ 352.00



Siding: Canyon Drift
Trim: Brown
Roof: Brown

12x32 Painted Garage w/ 3 - 6'x6'4" Roll Up Doors
QP836



12x28 Painted Garage



View Additional Options & Color Choices On Pages 30-34



*This advertised transaction is a rental-purchase agreement (also referred to as an RTO agreement). The Total of All Payments does not include applicable taxes or optional fees and other charges (such as late charges) that you may incur. You will not own or obtain equity in the merchandise until the total amount necessary to acquire ownership is paid in full or you exercise your early purchase option. Ownership is optional. Delivery fees may apply. No Credit Needed does not mean or imply that no inquiry will be made of credit history or creditworthiness. We may check the past transactional history, but no established FICO score or credit history is necessary. Free Delivery applies to new standard sized buildings in zone 1. Additional fees may apply for oversized buildings and long / difficult deliveries. Advertised rental rates and terms are for new merchandise at participating locations. Prices not valid outside the State Of Michigan. Some Exclusions May Apply.

12x16 = \$238.15 a month for 60 months | 60 Payments = \$14289 | RTO Charge: \$7859, 12x18 = \$256.37 a month for 60 months | 60 Payments = \$20662.2 | RTO Charge: \$11364.2, 12x20 = \$273.93 a month for 60 months | 60 Payments = \$16435.8 | RTO Charge: \$9039.8, 12x24 = \$309.3 a month for 60 months | 60 Payments = \$18558 | RTO Charge: \$10207, 12x28 = \$344.37 a month for 60 months | 60 Payments = \$20662.2 | RTO Charge: \$11364.2, 12x32 = \$379.89 a month for 60 months | 60 Payments = \$22793.4 | RTO Charge: \$12536.4, 12x36 = \$416.56 a month for 60 months | 60 Payments = \$24993.6 | RTO Charge: \$13746.6, 14x20 = \$302.44 a month for 60 months | 60 Payments = \$18146.4 | RTO Charge: \$9980.4, 14x24 = \$326.37 a month for 60 months | 60 Payments = \$19581.2 | RTO Charge: \$10770.2, 14x28 = \$384.41 a month for 60 months | 60 Payments = \$23064.6 | RTO Charge: \$12685.6, 14x32 = \$425.48 a month for 60 months | 60 Payments = \$25528.8 | RTO Charge: \$14040.8, 14x36 = \$458.44 a month for 60 months | 60 Payments = \$27506.4 | RTO Charge: \$15128.4, 14x40 = \$507.59 a month for 60 months | 60 Payments = \$30455.4 | RTO Charge: \$16750.4, 16x24 = \$400.37 a month for 60 months | 60 Payments = \$24022.2 | RTO Charge: \$13212.2, 16x28 = \$439.85 a month for 60 months | 60 Payments = \$26391 | RTO Charge: \$14515, 16x32 = \$485.63 a month for 60 months | 60 Payments = \$29137.8 | RTO Charge: \$16025.8, 16x36 = \$532.26 a month for 60 months | 60 Payments = \$31935.6 | RTO Charge: \$17564.6, 16x40 = \$587.74 a month for 60 months | 60 Payments = \$35264.4 | RTO Charge: \$19395.4, 16x44 = \$633.56 a month for 60 months | 60 Payments = \$38013.6 | RTO Charge: \$20907.6, 16x48 = \$695.44 a month for 60 months | 60 Payments = \$41726.4 | RTO Charge: \$22949.4,

Visit www.CedarRockBarns.com For More Info, Pictures & To Place An Order





Cottage Workshop



Standard Cottage Workshop Includes: Double Doors, 2 - 21x27 Windows

Std. Double Doors: 8' Building: 56"x6' 10' Building: 60"x6' 12', 14' & 16' Building: 72"x6'
 Max Roll Up Size: 8' Building: N/A 10' Building: N/A 12' Building: 5'x6'4"
 Double Doors Will Fit On Any Side / Pre-Hung & Roll Up On Gable Ends Only



QP845

Siding: Cape Cod Gray Trim: White
Shingles: Black



QP846

Siding: Tuscan Clay Trim: White
Shingles: Dual Brown

Add The Deluxe Package For 10% Of The Base Price!

- 4" Roof Overhang w/ MiraTEC Trim
- Upgrade Std. Swing Doors to Duratemp w/ Transom
- 1/2 Round Vents On Gable Ends
- MiraTEC Trim on Roof Line/ Corners / Doors / Windows
- Architectural Shingles (30 Year)
- 3 Color Combination

Deluxe Vinyl Cottage Workshop w/ Flowerboxes



QP847

Siding: Tuscan Clay
Trim: Almond Shingles: Vintage Green

Deluxe Vinyl Cottage Workshop



QP848

Siding: Charcoal Smoke Trim: White
Shingles: Black

Deluxe Vinyl Cottage Workshop



Vinyl Cottage Workshop w/ Workbench & Shelf



QP849

Siding: Coastal Sage Trim: Navajo White
Shingles: Charcoal Gray

Deluxe Vinyl Cottage Workshop w/ Additional 36"

DET Door w/ Transom

Vinyl Cottage Workshop

Size	Cash Price	RTO Starting At:
8x8	\$ 3,632.00	\$ 134.52 / Month*
8x10	\$ 3,837.00	\$ 142.11 / Month*
8x12	\$ 4,005.00	\$ 148.33 / Month*
8x14	\$ 4,223.00	\$ 156.41 / Month*
8x16	\$ 4,395.00	\$ 162.78 / Month*
10x10	\$ 4,045.00	\$ 149.81 / Month*
10x12	\$ 4,507.00	\$ 166.93 / Month*
10x14	\$ 4,768.00	\$ 176.59 / Month*
10x16	\$ 5,002.00	\$ 185.26 / Month*
10x18	\$ 5,496.00	\$ 203.56 / Month*
10x20	\$ 5,987.00	\$ 221.74 / Month*
12x12	\$ 4,751.00	\$ 175.96 / Month*
12x14	\$ 5,404.00	\$ 200.15 / Month*
12x16	\$ 5,870.00	\$ 217.41 / Month*
12x18	\$ 6,414.00	\$ 237.56 / Month*
12x20	\$ 6,958.00	\$ 257.70 / Month*
12x24	\$ 8,070.00	\$ 298.89 / Month*

Ramps

Up To 6' Wide \$147.00

Doors

Single DET w/ Transom	\$280.00
Double DET w/ Transom	\$475.00
Upgrade To DET w/ Transom	\$175.00
5'x6'4" Roll Up	\$683.00
6'x6'4" Roll Up	\$735.00

Workbench

6' Workbench	\$ 96.00
8' Workbench	\$128.00
2' Wide Workbench (Linear Foot)	\$ 16.00
Shelf Under Workbench (Linear Foot)	\$ 11.30

Windows

Delete Window	\$ (50.00)
21x27 Window	\$105.00

View Additional Options & Color Choices On Pages 30-34

*This advertised transaction is a rental-purchase agreement (also referred to as an RTO agreement). The Total of All Payments does not include applicable taxes or optional fees and other charges (such as late charges) that you may incur. You will not own or obtain equity in the merchandise until the total amount necessary to acquire ownership is paid in full or you exercise your early purchase option. Ownership is optional. Delivery fees may apply. No Credit Needed does not mean or imply that no inquiry will be made of credit history or creditworthiness. We may check the past transactional history, but no established FICO score or credit history is necessary. Free Delivery applies to new standard sized buildings in zone 1. Additional fees may apply for oversized buildings and long / difficult deliveries. Advertised rental rates and terms are for new merchandise at participating locations. Prices not valid outside the State Of Michigan. Some Exclusions May Apply.

8x8 = \$134.52 a month for 60 months | 60 Payments = \$8071.2 | RTO Charge: \$4439.2, 8x10 = \$142.11 a month for 60 months | 60 Payments = \$8526.6 | RTO Charge: \$4689.6, 8x12 = \$148.33 a month for 60 months | 60 Payments = \$8899.8 | RTO Charge: \$4894.8, 8x14 = \$156.41 a month for 60 months | 60 Payments = \$9384.6 | RTO Charge: \$5161.6, 8x16 = \$162.78 a month for 60 months | 60 Payments = \$9766.8 | RTO Charge: \$5371.8, 10x10 = \$149.81 a month for 60 months | 60 Payments = \$8988.6 | RTO Charge: \$4943.6, 10x12 = \$166.93 a month for 60 months | 60 Payments = \$10015.8 | RTO Charge: \$5508.8, 10x14 = \$176.59 a month for 60 months | 60 Payments = \$10595.4 | RTO Charge: \$5827.4, 10x16 = \$185.26 a month for 60 months | 60 Payments = \$11115.6 | RTO Charge: \$6113.6, 10x18 = \$203.56 a month for 60 months | 60 Payments = \$12213.6 | RTO Charge: \$6717.6, 10x20 = \$221.74 a month for 60 months | 60 Payments = \$13304.4 | RTO Charge: \$7317.4, 12x12 = \$175.96 a month for 60 months | 60 Payments = \$10557.6 | RTO Charge: \$5806.6, 12x14 = \$200.15 a month for 60 months | 60 Payments = \$12009 | RTO Charge: \$6605, 12x16 = \$217.41 a month for 60 months | 60 Payments = \$13044.6 | RTO Charge: \$7174.6, 12x18 = \$237.56 a month for 60 months | 60 Payments = \$14253.6 | RTO Charge: \$7839.6, 12x20 = \$257.7 a month for 60 months | 60 Payments = \$15462 | RTO Charge: \$8504, 12x24 = \$298.89 a month for 60 months | 60 Payments = \$17933.4 | RTO Charge: \$9863.4



Visit www.CedarRockBarns.com For More Info, Pictures & To Place An Order

Online Ordering Available At: www.CedarRockBarns.com - Purchase or Rent To Own - ©Cedar Rock Barns, LLC - February 2024 - All Rights Reserved -



Cottage Workshop



**Approximate Height Based Off A 10' Wide Building*

Standard Cottage Workshop Includes: Double Doors, 2 - 21x27 Windows

Std. Double Doors: 8' Building: 56"x6' 10' Building: 60"x6' 12', 14' & 16' Building: 72"x6'
Max Roll Up Size: 8' Building: N/A 10' Building: N/A 12' Building: 5'x6'
Double Doors Will Fit On Any Side / Pre-Hung & Roll Up On Gable Ends Only



Painted Cottage Workshop



QP840

Siding: Wedgewood Blue Trim: Black
Shingles: Black



QP841

Siding: Stolzifus Almond Trim: Dark Brown
Shingles: Dual Brown

Size	Cash Price	RTO Starting At:
8x8	\$ 3,062.00	\$113.41 / Month*
8x10	\$ 3,493.00	\$129.37 / Month*
8x12	\$ 3,798.00	\$140.67 / Month*
8x14	\$ 4,033.00	\$149.37 / Month*
8x16	\$ 4,242.00	\$157.11 / Month*
10x10	\$ 3,849.00	\$142.56 / Month*
10x12	\$ 4,242.00	\$157.11 / Month*
10x14	\$ 4,573.00	\$169.37 / Month*
10x16	\$ 4,837.00	\$179.15 / Month*
10x18	\$ 5,126.00	\$189.85 / Month*
10x20	\$ 5,558.00	\$205.85 / Month*
12x12	\$ 4,455.00	\$165.00 / Month*
12x14	\$ 5,089.00	\$188.48 / Month*
12x16	\$ 5,557.00	\$205.81 / Month*
12x18	\$ 6,091.00	\$225.59 / Month*
12x20	\$ 6,603.00	\$244.56 / Month*
12x24	\$ 7,578.00	\$280.67 / Month*

Add The Deluxe Package For 10% Of The Base Price!

- 4" Roof Overhang w/ MiraTEC Trim
- Upgrade Std. Swing Doors to Duratemp w/ Transom
- 1/2 Round Vents On Gable Ends
- MiraTEC Trim on Roof Line/ Corners / Doors / Windows
- Architectural Shingles (30 Year)
- 3 Color Combination

Deluxe Painted Cottage Workshop

Siding: Gray Trim: White Shingles: Harvard Slate



QP842

10x18 Painted Cottage Workshop w/ Deluxe,
36" Duratemp, 3 - 21x27 Windows, 2 Flowerboxes

Deluxe Painted Cottage Workshop

Siding: Clay Trim: Wedgewood Blue
Shingles: Dual Gray



QP843

8x14 Painted Cottage Workshop w/ Deluxe



12x16 Painted Cottage Workshop

Deluxe Painted Cottage Workshop



QP844

Siding: Navajo White Trim: Adobe Cream
Shingles: Weatherwood

Ramps	
Up To 6' Wide	\$ 147.00
Doors	
Single DET w/ Transom	\$ 280.00
Double DET w/ Transom	\$ 475.00
Upgrade To DET w/ Transom	\$ 175.00
5'x6'4" Roll Up	\$ 683.00
6'x6'4" Roll Up	\$ 735.00
Workbench	
6' Workbench	\$ 96.00
8' Workbench	\$ 128.00
2' Wide Workbench (Linear Foot)	\$ 16.00
Shelf Under Workbench (Linear Foot)	\$ 11.30
Windows	
Delete Window	\$ (50.00)
21x27 Window	\$ 105.00



View Additional Options & Color Choices On Pages 30-34



*This advertised transaction is a rental-purchase agreement (also referred to as an RTO agreement). The Total of All Payments does not include applicable taxes or optional fees and other charges (such as late charges) that you may incur. You will not own or obtain equity in the merchandise until the total amount necessary to acquire ownership is paid in full or you exercise your early purchase option. Ownership is optional. Delivery fees may apply. No Credit Needed does not mean or imply that no inquiry will be made of credit history or creditworthiness. We may check the past transactional history, but no established FICO score or credit history is necessary. Free Delivery applies to new standard sized buildings in zone 1. Additional fees may apply for oversized buildings and long / difficult deliveries. Advertised rental rates and terms are for new merchandise at participating locations. Prices not valid outside the State Of Michigan. Some Exclusions May Apply.

8x8 = \$113.41 a month for 60 months | 60 Payments = \$6804.6 | RTO Charge: \$3742.6, 8x10 = \$129.37 a month for 60 months | 60 Payments = \$7762.2 | RTO Charge: \$4269.2, 8x12 = \$140.67 a month for 60 months | 60 Payments = \$8440.2 | RTO Charge: \$4642.2, 8x14 = \$149.37 a month for 60 months | 60 Payments = \$8962.2 | RTO Charge: \$4929.2, 8x16 = \$157.11 a month for 60 months | 60 Payments = \$9426.6 | RTO Charge: \$5184.6, 10x10 = \$142.56 a month for 60 months | 60 Payments = \$8553.6 | RTO Charge: \$4704.6, 10x12 = \$157.11 a month for 60 months | 60 Payments = \$9426.6 | RTO Charge: \$5184.6, 10x14 = \$169.37 a month for 60 months | 60 Payments = \$10162.2 | RTO Charge: \$5589.2, 10x16 = \$179.15 a month for 60 months | 60 Payments = \$10749 | RTO Charge: \$5912, 10x18 = \$189.85 a month for 60 months | 60 Payments = \$11391 | RTO Charge: \$6265, 10x20 = \$205.85 a month for 60 months | 60 Payments = \$12351 | RTO Charge: \$6793, 12x12 = \$165 a month for 60 months | 60 Payments = \$9900 | RTO Charge: \$5445, 12x14 = \$188.48 a month for 60 months | 60 Payments = \$11308.8 | RTO Charge: \$6219.8, 12x16 = \$205.81 a month for 60 months | 60 Payments = \$12348.6 | RTO Charge: \$6791.6, 12x18 = \$225.59 a month for 60 months | 60 Payments = \$13535.4 | RTO Charge: \$7444.4, 12x20 = \$244.56 a month for 60 months | 60 Payments = \$14673.6 | RTO Charge: \$8070.6, 12x24 = \$280.67 a month for 60 months | 60 Payments = \$16840.2 | RTO Charge: \$9262.2

Visit www.CedarRockBarns.com For More Info, Pictures & To Place An Order





Carriage House



*Approximate Height Based Off A 10' Wide Building

Standard Carriage House Includes: Double Doors, 2 - 21x27 Windows



Std. Double Doors: 8' Building: 56"x6' 10' Building: 60"x6' 12', 14' & 16' Building: 72"x6'
Max Roll Up Size: 8' Building: N/A 10' Building: 5'x6'4" 12' Building: 6'x6'4"
Swing Doors Will Fit On Front Wall & Gable Ends / Roll Up Fits On Gable Ends Only



QP855



QP856
Siding: Monterey Sand
Trim: White Shingles: Dual Brown

Add The Deluxe Package For 10% Of The Base Price!
- 4" Roof Overhang w/ MiraTEC Trim - MiraTEC Trim on Roof Line/ Corners / Doors / Windows
- Upgrade Std. Swing Doors to Duratemp w/ Transom - Architectural Shingles (30 Year)
- 1/2 Round Vents On Gable Ends - 3 Color Combination

Deluxe Vinyl Carriage House

Siding: Adobe Cream Trim: White
Shingles: Dual Black



QP857

Deluxe Vinyl Carriage House

w/ Vertical Vinyl Siding, Steel Roof, 4- 24x36 Windows
& Extra DET Doors



QP858
Siding: Canyon Drift Trim: White
Shingles: Black



QP859
Siding: Charcoal Smoke Trim: White
Shingles: Dual Black



QP860
Siding: Arbor Trim: T Clay
Shingles: Harvard Slate
Doors / Yents: Navajo White



View Additional Options & Color Choices On Pages 30-34



*This advertised transaction is a rental-purchase agreement (also referred to as an RTO agreement). The Total of All Payments does not include applicable taxes or optional fees and other charges (such as late charges) that you may incur. You will not own or obtain equity in the merchandise until the total amount necessary to acquire ownership is paid in full or you exercise your early purchase option. Ownership is optional. Delivery fees may apply. No Credit Needed does not mean or imply that no inquiry will be made of credit history or creditworthiness. We may check the past transactional history, but no established FICO score or credit history is necessary. Free Delivery applies to new standard sized buildings in zone 1. Additional fees may apply for oversized buildings and long / difficult deliveries. Advertised rental rates and terms are for new merchandise at participating locations. Prices not valid outside the State Of Michigan, Some Exclusions May Apply.
6x8 = \$141.7 a month for 60 months | 60 Payments = \$8502 | RTO Charge: \$4676, 8x8 = \$158.22 a month for 60 months | 60 Payments = \$9493.2 | RTO Charge: \$5221.2, 8x10 = \$165.74 a month for 60 months | 60 Payments = \$9944.4 | RTO Charge: \$5469.4, 8x12 = \$174.78 a month for 60 months | 60 Payments = \$10486.8 | RTO Charge: \$5767.8, 8x14 = \$186.37 a month for 60 months | 60 Payments = \$11182.2 | RTO Charge: \$6150.2, 8x16 = \$198.26 a month for 60 months | 60 Payments = \$11895.6 | RTO Charge: \$6542.6, 10x10 = \$168.59 a month for 60 months | 60 Payments = \$10115.4 | RTO Charge: \$5563.4, 10x12 = \$182.26 a month for 60 months | 60 Payments = \$10935.6 | RTO Charge: \$6014.6, 10x14 = \$198.22 a month for 60 months | 60 Payments = \$11893.2 | RTO Charge: \$6541.2, 10x16 = \$213.3 a month for 60 months | 60 Payments = \$12798 | RTO Charge: \$7039, 10x18 = \$227.85 a month for 60 months | 60 Payments = \$13671 | RTO Charge: \$7519, 10x20 = \$235.22 a month for 60 months | 60 Payments = \$14113.2 | RTO Charge: \$7762.2, 12x12 = \$198.93 a month for 60 months | 60 Payments = \$11935.8 | RTO Charge: \$6564.8, 12x14 = \$218.3 a month for 60 months | 60 Payments = \$13098 | RTO Charge: \$7204, 12x16 = \$230.33 a month for 60 months | 60 Payments = \$13819.8 | RTO Charge: \$7600.8, 12x18 = \$249.56 a month for 60 months | 60 Payments = \$14973.6 | RTO Charge: \$8235.6, 12x20 = \$262.44 a month for 60 months | 60 Payments = \$15746.4 | RTO Charge: \$8660.4, 12x24 = \$307.37 a month for 60 months | 60 Payments = \$18442.2 | RTO Charge: \$10143.2, 12x28 = \$339.63 a month for 60 months | 60 Payments = \$20377.8 | RTO Charge: \$11207.8, 12x32 = \$374.89 a month for 60 months | 60 Payments = \$22493.4 | RTO Charge: \$12371.4, 12x36 = \$414.78 a month for 60 months | 60 Payments = \$24886.8 | RTO Charge: \$13687.8,



Visit www.CedarRockBarns.com For More Info, Pictures & To Place An Order

Online Ordering Available At: www.CedarRockBarns.com - Purchase or Rent To Own - ©Cedar Rock Barns, LLC - February 2024 - All Rights Reserved -



Carriage House



*Approximate Height Based Off A 10' Wide Building

Standard Carriage House Includes: Double Doors, 2 - 21x27 Windows



Std. Double Doors: 8' Building: 56"x6' 10' Building: 60"x6' 12' & 16' Building: 72"x6'
Max Roll Up Size: 8' Building: N/A 10' Building: 5'x6'4" 12' Building: 6'x6'4"
Swing Doors Will Fit On Front Wall & Gable Ends / Roll Up Fits On Gable Ends Only



QP850

Siding: Monterey Sand Trim: Clay
Shingles: Brown



QP851

Siding: Cape Cod Gray Trim: Gray
Shingles: Charcoal Gray

Add The Deluxe Package For 10% Of The Base Price!

- 4" Roof Overhang w/ MiraTEC Trim
- Upgrade Std. Swing Doors to Duratemp w/ Transom
- 1/2 Round Vents On Gable Ends
- MiraTEC Trim on Roof Line/ Corners / Doors / Windows
- Architectural Shingles (30 Year)
- 3 Color Combination

Deluxe Painted Carriage House



QP852

Siding: Avocado Trim: Navajo White
Shingles: Weatherwood



QP853

Siding: Clay Trim: Navajo White
Shingles: Dual Brown



10x16 Painted Carriage House



QP854

Siding: Cape Cod Gray Trim: White
Shingles: Charcoal Gray

Painted Carriage House

Size	Cash Price	RTO Starting At:
6x8	\$ 3,625.00	\$ 134.26 / Month*
8x8	\$ 3,791.00	\$ 140.41 / Month*
8x10	\$ 4,093.00	\$ 151.59 / Month*
8x12	\$ 4,373.00	\$ 161.96 / Month*
8x14	\$ 4,691.00	\$ 173.74 / Month*
8x16	\$ 5,016.00	\$ 185.78 / Month*
10x10	\$ 4,086.00	\$ 151.33 / Month*
10x12	\$ 4,468.00	\$ 165.48 / Month*
10x14	\$ 4,890.00	\$ 181.11 / Month*
10x16	\$ 5,405.00	\$ 200.19 / Month*
10x18	\$ 5,847.00	\$ 216.56 / Month*
10x20	\$ 6,148.00	\$ 227.70 / Month*
12x12	\$ 4,940.00	\$ 182.96 / Month*
12x14	\$ 5,366.00	\$ 198.74 / Month*
12x16	\$ 5,814.00	\$ 215.33 / Month*
12x18	\$ 6,270.00	\$ 232.22 / Month*
12x20	\$ 6,754.00	\$ 250.15 / Month*
12x24	\$ 7,682.00	\$ 284.52 / Month*
12x28	\$ 8,603.00	\$ 318.63 / Month*
12x32	\$ 9,534.00	\$ 353.11 / Month*
12x36	\$10,496.00	\$ 388.74 / Month*

Ramps

Up To 6' Wide \$ 147.00

Doors

Single DET w/ Transom \$ 280.00

Double DET w/ Transom \$ 475.00

Upgrade To DET w/ Transom \$ 175.00

5'x6'4" Roll Up \$ 683.00

6'x6'4" Roll Up \$ 735.00

Windows

Delete Window \$ (50.00)

21x27 Window \$ 105.00



View Additional Options & Color Choices On Pages 30-34



*This advertised transaction is a rental-purchase agreement (also referred to as an RTO agreement). The Total of All Payments does not include applicable taxes or optional fees and other charges (such as late charges) that you may incur. You will not own or obtain equity in the merchandise until the total amount necessary to acquire ownership is paid in full or you exercise your early purchase option. Ownership is optional. Delivery fees may apply. No Credit Needed does not mean or imply that no inquiry will be made of credit history or creditworthiness. We may check the past transactional history, but no established FICO score or credit history is necessary. Free Delivery applies to new standard sized buildings in zone 1. Additional fees may apply for oversized buildings and long / difficult deliveries. Advertised rental rates and terms are for new merchandise at participating locations. Prices not valid outside the State Of Michigan, Some Exclusions May Apply.

6x8 = \$134.26 a month for 60 months | 60 Payments = \$8055.6 | RTO Charge: \$4430.6, 8x8 = \$140.41 a month for 60 months | 60 Payments = \$8424.6 | RTO Charge: \$4633.6, 8x10 = \$151.59 a month for 60 months | 60 Payments = \$9095.4 | RTO Charge: \$5002.4, 8x12 = \$161.96 a month for 60 months | 60 Payments = \$9717.6 | RTO Charge: \$5344.6, 8x14 = \$173.74 a month for 60 months | 60 Payments = \$10424.4 | RTO Charge: \$5733.4, 8x16 = \$185.78 a month for 60 months | 60 Payments = \$11146.8 | RTO Charge: \$6130.8, 10x10 = \$151.33 a month for 60 months | 60 Payments = \$9079.8 | RTO Charge: \$4993.8, 10x12 = \$165.48 a month for 60 months | 60 Payments = \$9928.8 | RTO Charge: \$5460.8, 10x14 = \$181.11 a month for 60 months | 60 Payments = \$10866.6 | RTO Charge: \$5976.6, 10x16 = \$200.19 a month for 60 months | 60 Payments = \$12011.4 | RTO Charge: \$6606.4, 10x18 = \$216.56 a month for 60 months | 60 Payments = \$12993.6 | RTO Charge: \$7146.6, 10x20 = \$227.70 a month for 60 months | 60 Payments = \$13662 | RTO Charge: \$7514, 12x12 = \$182.96 a month for 60 months | 60 Payments = \$10977.6 | RTO Charge: \$6037.6, 12x14 = \$198.74 a month for 60 months | 60 Payments = \$11924.4 | RTO Charge: \$6558.4, 12x16 = \$215.33 a month for 60 months | 60 Payments = \$12919.8 | RTO Charge: \$7105.8, 12x18 = \$232.22 a month for 60 months | 60 Payments = \$13933.2 | RTO Charge: \$7663.2, 12x20 = \$250.15 a month for 60 months | 60 Payments = \$15009 | RTO Charge: \$8255, 12x24 = \$284.52 a month for 60 months | 60 Payments = \$17071.2 | RTO Charge: \$9389.2, 12x28 = \$318.63 a month for 60 months | 60 Payments = \$19117.8 | RTO Charge: \$10514.8, 12x32 = \$353.11 a month for 60 months | 60 Payments = \$21186.6 | RTO Charge: \$11652.6, 12x36 = \$388.74 a month for 60 months | 60 Payments = \$23324.4 | RTO Charge: \$12828.4,

Visit www.CedarRockBarns.com For More Info, Pictures & To Place An Order

- Online Ordering Available At: www.CedarRockBarns.com - Purchase or Rent To Own - ©Cedar Rock Barns, LLC - February 2024 - All Rights Reserved





Cape Cod



Standard Cape Cod Includes: Double Doors, 2 - 21x27 Windows, 4" Eaves, 7/12 Roof Pitch

Std. Double Doors: 8' Building: 5'6"x6' 10' Building: 6'0"x6' 12' Building: 7'2"x6'
Max Roll Up Size: 8' Building: 5'x6'4" 10' Building: 6'x6'4" 12' Building: 7'x7'
Doors Will Fit On Any Wall / Roll Up Will Fit On Gable Ends Only

*Approximate Height Based Off A 10' Wide Building



Vinyl Cape Cod

Size	Cash Price	RTO Starting At:
8x8	\$ 4,435.00	\$164.26 / Month*
8x10	\$ 4,637.00	\$171.74 / Month*
8x12	\$ 4,851.00	\$179.67 / Month*
8x14	\$ 5,232.00	\$193.78 / Month*
8x16	\$ 5,472.00	\$202.67 / Month*
10x10	\$ 4,824.00	\$178.67 / Month*
10x12	\$ 5,183.00	\$191.96 / Month*
10x14	\$ 5,614.00	\$207.93 / Month*
10x16	\$ 6,145.00	\$227.59 / Month*
10x18	\$ 6,681.00	\$247.44 / Month*
10x20	\$ 7,144.00	\$264.59 / Month*
12x12	\$ 5,735.00	\$212.41 / Month*
12x14	\$ 6,115.00	\$226.48 / Month*
12x16	\$ 6,613.00	\$244.93 / Month*
12x18	\$ 7,098.00	\$262.89 / Month*
12x20	\$ 7,571.00	\$280.41 / Month*
12x24	\$ 8,574.00	\$317.56 / Month*
12x28	\$ 9,472.00	\$350.81 / Month*
12x32	\$ 10,540.00	\$390.37 / Month*
12x36	\$ 11,521.00	\$426.70 / Month*



Siding: Vintage Wicker Trim: Maple
Shingles: Earthtone Cedar



QP866

Add The Deluxe Package For 10% Of The Base Price!

- 4" Roof Overhang w/ MiraTEC Trim
- Upgrade Std. Swing Doors to Duratemp w/ Transom
- 1/2 Round Vents On Gable Ends
- MiraTEC Trim on Roof Line/ Corners / Doors / Windows
- Architectural Shingles (30 Year)
- 3 Color Combination

Siding: Cape Cod Gray
Trim: White Shingles: Black

Deluxe Vinyl Cape Cod



QP867

Siding: Charcoal Smoke Trim: Black
Roof: Galvalume



QP868

Shown w/ Upgraded 24x36 Windwos & Additional 24x36 Window



Siding: Canyon Drift Trim: White
Shingles: Dual Brown

QP869



QP870

Siding: Coastal Sage Trim: Navajo White
Shingles: Weatherwood

Ramps	
Up To 6' Wide	\$ 147.00
Doors	
Single DET w/ Transom	\$ 280.00
Double DET w/ Transom	\$ 475.00
Upgrade To DET w/ Transom	\$ 175.00
5'x6'4" Roll Up	\$ 683.00
6'x6'4" Roll Up	\$ 735.00
Windows	
Delete Window	\$ (50.00)
21x27 Window	\$ 105.00
24x36 Window	\$ 152.00
10"x24" Transom	\$ 95.00
Dormers	
6' Wide Cape Cod Dormer - 2 Windows	\$ 1,050.00
8' Wide Cape Cod Dormer - 3 Windows	\$ 1,155.00

View Additional Options & Color Choices On Pages 30-34

*This advertised transaction is a rental-purchase agreement (also referred to as an RTO agreement). The Total of All Payments does not include applicable taxes or optional fees and other charges (such as late charges) that you may incur. You will not own or obtain equity in the merchandise until the total amount necessary to acquire ownership is paid in full or you exercise your early purchase option. Ownership is optional. Delivery fees may apply. No Credit Needed does not mean or imply that no inquiry will be made of credit history or creditworthiness. We may check the past transactional history, but no established FICO score or credit history is necessary. Free Delivery applies to new standard sized buildings in zone 1. Additional fees may apply for oversized buildings and long / difficult deliveries. Advertised rental rates and terms are for new merchandise at participating locations. Prices not valid outside the State Of Michigan. Some Exclusions May Apply.

8x8 = \$164.26 a month for 60 months | 60 Payments = \$9855.6| RTO Charge: \$5420.6, 8x10 = \$171.74 a month for 60 months | 60 Payments = \$10304.4| RTO Charge: \$5667.4, 8x12 = \$179.67 a month for 60 months | 60 Payments = \$10780.2| RTO Charge: \$5929.2, 8x14 = \$193.78 a month for 60 months | 60 Payments = \$11626.8| RTO Charge: \$6394.8, 8x16 = \$202.67 a month for 60 months | 60 Payments = \$12160.2| RTO Charge: \$6688.2, 10x10 = \$178.67 a month for 60 months | 60 Payments = \$10720.2| RTO Charge: \$5896.2, 10x12 = \$191.96 a month for 60 months | 60 Payments = \$11517.6| RTO Charge: \$6334.6, 10x14 = \$207.93 a month for 60 months | 60 Payments = \$12475.8| RTO Charge: \$6861.8, 10x16 = \$227.59 a month for 60 months | 60 Payments = \$13655.4| RTO Charge: \$7510.4, 10x18 = \$247.44 a month for 60 months | 60 Payments = \$14846.4| RTO Charge: \$8165.4, 10x20 = \$264.59 a month for 60 months | 60 Payments = \$15875.4| RTO Charge: \$8731.4, 12x12 = \$212.41 a month for 60 months | 60 Payments = \$12744.6| RTO Charge: \$7009.6, 12x14 = \$226.48 a month for 60 months | 60 Payments = \$13588.8| RTO Charge: \$7473.8, 12x16 = \$244.93 a month for 60 months | 60 Payments = \$14695.8| RTO Charge: \$8082.8, 12x18 = \$262.89 a month for 60 months | 60 Payments = \$15773.4| RTO Charge: \$8675.4, 12x20 = \$280.41 a month for 60 months | 60 Payments = \$16824.6| RTO Charge: \$9253.6, 12x24 = \$317.56 a month for 60 months | 60 Payments = \$19053.6| RTO Charge: \$10479.6, 12x28 = \$350.81 a month for 60 months | 60 Payments = \$21048.6| RTO Charge: \$11576.6, 12x32 = \$390.37 a month for 60 months | 60 Payments = \$23422.2| RTO Charge: \$12882.2, 12x36 = \$426.70 a month for 60 months | 60 Payments = \$25602| RTO Charge: \$14081



Visit www.CedarRockBarns.com For More Info, Pictures & To Place An Order

Online Ordering Available At: www.CedarRockBarns.com - Purchase or Rent To Own - ©Cedar Rock Barns, LLC - February 2024 - All Rights Reserved -



Cape Cod



Standard Cape Cod Includes: Double Doors, 2 - 21x27 Windows, 4" Eaves, 7/12 Roof Pitch

Std. Double Doors: 8' Building: 56"x6' 10' Building: 60"x6' 12' Building: 72"x6'
Max Roll Up Size: 8' Building: 5'x6'4" 10' Building: 6'x6'4" 12' Building: 7'x7'
Doors Will Fit On Any Wall / Roll Up Will Fit On Gable Ends Only

*Approximate Height Based Off A 10' Wide Building
Standard Painted Cape Cod



Siding: Gray Trim: Black
Shingles: Black

QP861



Siding: Gray Trim: White
Shingles: Charcoal Gray

QP862

Add The Deluxe Package For 10% Of The Base Price!

- 4" Roof Overhang w/ MiraTEC Trim
- Upgrade Std. Swing Doors to Duratemp w/ Transom
- 1/2 Round Vents On Gable Ends
- MiraTEC Trim on Roof Line/ Corners / Doors / Windows
- Architectural Shingles (30 Year)
- 3 Color Combination

Deluxe Painted Cape Cod



Siding: Navy Blue Trim: White
Shingles: Black

QP863



Siding: New Holland Beige Trim: Monterey Sand
Shingles: Earthtone Cedar

QP864



12x16 Painted Cape Cod



Siding: Navy Blue Trim: White
Roof: Galvalume

QP865

Painted Cape Cod

Size	Cash Price	RTO Starting At:
8x8	\$ 4,060.00	\$ 150.37 / Month*
8x10	\$ 4,244.00	\$ 157.19 / Month*
8x12	\$ 4,381.00	\$ 162.26 / Month*
8x14	\$ 4,690.00	\$ 173.70 / Month*
8x16	\$ 4,905.00	\$ 181.67 / Month*
10x10	\$ 4,328.00	\$ 160.30 / Month*
10x12	\$ 4,684.00	\$ 173.48 / Month*
10x14	\$ 5,108.00	\$ 189.19 / Month*
10x16	\$ 5,615.00	\$ 207.96 / Month*
10x18	\$ 6,126.00	\$ 226.89 / Month*
10x20	\$ 6,591.00	\$ 244.11 / Month*
12x12	\$ 5,229.00	\$ 193.67 / Month*
12x14	\$ 5,639.00	\$ 208.85 / Month*
12x16	\$ 6,078.00	\$ 225.11 / Month*
12x18	\$ 6,543.00	\$ 242.33 / Month*
12x20	\$ 6,992.00	\$ 258.96 / Month*
12x24	\$ 7,896.00	\$ 292.44 / Month*
12x28	\$ 8,791.00	\$ 325.59 / Month*
12x32	\$ 9,696.00	\$ 359.11 / Month*
12x36	\$ 10,635.00	\$ 393.89 / Month*

Ramps

Up To 6' Wide \$ 147.00

Doors

Single DET w/ Transom \$ 280.00

Double DET w/ Transom \$ 475.00

Upgrade To DET w/ Transom \$ 175.00

5'x6'4" Roll Up \$ 683.00

6'x6'4" Roll Up \$ 735.00

Windows

Delete Window \$ (50.00)

21x27 Window \$ 105.00

24x36 Window \$ 152.00

10"x24" Transom \$ 95.00

Dormers

6' Wide Cape Cod Dormer - 2 Windows \$ 1,050.00

8' Wide Cape Cod Dormer - 3 Windows \$ 1,155.00

View Additional Options & Color Choices On Pages 30-34

*This advertised transaction is a rental-purchase agreement (also referred to as an RTO agreement). The Total of All Payments does not include applicable taxes or optional fees and other charges (such as late charges) that you may incur. You will not own or obtain equity in the merchandise until the total amount necessary to acquire ownership is paid in full or you exercise your early purchase option. Ownership is optional. Delivery fees may apply. No Credit Needed does not mean or imply that no inquiry will be made of credit history or creditworthiness. We may check the past transactional history, but no established FICO score or credit history is necessary. Free Delivery applies to new standard sized buildings in zone 1. Additional fees may apply for oversized buildings and long / difficult deliveries. Advertised rental rates and terms are for new merchandise at participating locations. Prices not valid outside the State Of Michigan, Some Exclusions May Apply.

8x8 = \$150.37 a month for 60 months | 60 Payments = \$9022.2| RTO Charge: \$4962.2, 8x10 = \$157.19 a month for 60 months | 60 Payments = \$9431.4| RTO Charge: \$5187.4, 8x12 = \$162.26 a month for 60 months | 60 Payments = \$9735.6| RTO Charge: \$5354.6, 8x14 = \$173.7 a month for 60 months | 60 Payments = \$10422| RTO Charge: \$5732, 8x16 = \$181.67 a month for 60 months | 60 Payments = \$10900.2| RTO Charge: \$5995.2, 10x10 = \$160.3 a month for 60 months | 60 Payments = \$9618| RTO Charge: \$5290, 10x12 = \$173.48 a month for 60 months | 60 Payments = \$10408.8| RTO Charge: \$5724.8, 10x14 = \$189.19 a month for 60 months | 60 Payments = \$11351.4| RTO Charge: \$6243.4, 10x16 = \$207.96 a month for 60 months | 60 Payments = \$12477.6| RTO Charge: \$6862.6, 10x18 = \$226.89 a month for 60 months | 60 Payments = \$13613.4| RTO Charge: \$7487.4, 10x20 = \$244.11 a month for 60 months | 60 Payments = \$14646.6| RTO Charge: \$8055.6, 12x12 = \$193.67 a month for 60 months | 60 Payments = \$11620.2| RTO Charge: \$6391.2, 12x14 = \$208.85 a month for 60 months | 60 Payments = \$12531| RTO Charge: \$6892, 12x16 = \$225.11 a month for 60 months | 60 Payments = \$13506.6| RTO Charge: \$7428.6, 12x18 = \$242.33 a month for 60 months | 60 Payments = \$14539.8| RTO Charge: \$7996.8, 12x20 = \$258.96 a month for 60 months | 60 Payments = \$15537.6| RTO Charge: \$8545.6, 12x24 = \$292.44 a month for 60 months | 60 Payments = \$17546.4| RTO Charge: \$9650.4, 12x28 = \$325.59 a month for 60 months | 60 Payments = \$19535.4| RTO Charge: \$10744.4, 12x32 = \$359.11 a month for 60 months | 60 Payments = \$21546.6| RTO Charge: \$11850.6, 12x36 = \$393.89 a month for 60 months | 60 Payments = \$23633.4| RTO Charge: \$12998.4.

Visit www.CedarRockBarns.com For More Info, Pictures & To Place An Order

Online Ordering Available At: www.CedarRockBarns.com - Purchase or Rent To Own - ©Cedar Rock Barns, LLC - February 2024 - All Rights Reserved





Cape Cod Dormers



Vinyl Cape Dormer

Size	Cash Price	RTO Starting At:
10x10	\$ 8,416.00	\$ 311.70 / Month*
10x12	\$ 8,837.40	\$ 327.31 / Month*
10x14	\$ 9,337.80	\$ 345.84 / Month*
10x16	\$ 9,949.20	\$ 368.49 / Month*
10x18	\$ 10,564.60	\$ 391.28 / Month*
10x20	\$ 11,100.00	\$ 411.11 / Month*
12x12	\$ 9,477.08	\$ 351.00 / Month*
12x14	\$ 9,926.76	\$ 367.66 / Month*
12x16	\$ 10,505.44	\$ 389.09 / Month*
12x18	\$ 11,071.12	\$ 410.04 / Month*
12x20	\$ 11,622.80	\$ 430.47 / Month*
12x24	\$ 12,789.16	\$ 473.67 / Month*
12x28	\$ 13,840.52	\$ 512.61 / Month*
12x32	\$ 15,078.88	\$ 558.48 / Month*
12x36	\$ 16,221.24	\$ 600.79 / Month*

Cape Cod Dormer Includes

- Deluxe Package
- 3/4" Treated Flooring
- 8x7 Sectional w/ Windows
- Upgraded 24x36 Windows
- 2 Additional 24x36 Windows
- 4 - 10x24 Transom Windows
- DET Doors w/ Transom Windows
- 6' Cape Cod Dormer w/ 2 Windows



Painted Cape Dormer

Size	Cash Price	RTO Starting At:
10x10	\$ 7,871.00	\$ 291.52 / Month*
10x12	\$ 8,288.40	\$ 306.98 / Month*
10x14	\$ 8,781.80	\$ 325.25 / Month*
10x16	\$ 9,366.20	\$ 346.90 / Month*
10x18	\$ 9,954.60	\$ 368.69 / Month*
10x20	\$ 10,492.00	\$ 388.59 / Month*
12x12	\$ 8,920.08	\$ 330.37 / Month*
12x14	\$ 9,402.76	\$ 348.25 / Month*
12x16	\$ 9,917.44	\$ 367.31 / Month*
12x18	\$ 10,460.12	\$ 387.41 / Month*
12x20	\$ 10,985.80	\$ 406.88 / Month*
12x24	\$ 12,044.16	\$ 446.08 / Month*
12x28	\$ 13,091.52	\$ 484.87 / Month*
12x32	\$ 14,150.88	\$ 524.11 / Month*
12x36	\$ 15,247.24	\$ 564.71 / Month*



Siding: Harbor Blue Trim: White
Shingles: Black

QP871



Siding: Gray Trim: White
Shingles: Black

QP872

Ramps	
Up To 6' Wide	\$ 147.00
3' x 96" Ramp	\$ 179.00
3' x 108" Ramp	\$ 194.00
Windows	
Delete Window	\$ (50.00)
21x27 Window	\$ 105.00
24x36 Window	\$ 152.00
10"x24" Transom	\$ 95.00



Siding: Avocado Trim: Clay
Shingles: Weatherwood

QP873



Siding: Brown Trim: Almond
Shingles: Brown

QP874

View Additional Options & Color Choices On Pages 30-34

*This advertised transaction is a rental-purchase agreement (also referred to as an RTO agreement). The Total of All Payments does not include applicable taxes or optional fees and other charges (such as late charges) that you may incur. You will not own or obtain equity in the merchandise until the total amount necessary to acquire ownership is paid in full or you exercise your early purchase option. Ownership is optional. Delivery fees may apply. No Credit Needed does not mean or imply that no inquiry will be made of credit history or creditworthiness. We may check the past transactional history, but no established FICO score or credit history is necessary. Free Delivery applies to new standard sized buildings in zone 1. Additional fees may apply for oversized buildings and long / difficult deliveries. Advertised rental rates and terms are for new merchandise at participating locations. Prices not valid outside the State Of Michigan. Some Exclusions May Apply.

Vinyl Cape Dormer - 10x10 = \$3117.1 a month for 60 months | 60 Payments = \$18702 | RTO Charge: \$10286, 10x12 = \$327.31 a month for 60 months | 60 Payments = \$19638.6 | RTO Charge: \$10801.2, 10x14 = \$345.84 a month for 60 months | 60 Payments = \$20750.4 | RTO Charge: \$11412.6, 10x16 = \$368.49 a month for 60 months | 60 Payments = \$22109.4 | RTO Charge: \$12162.8, 10x18 = \$391.28 a month for 60 months | 60 Payments = \$23476.8 | RTO Charge: \$12912.2, 10x20 = \$411.11 a month for 60 months | 60 Payments = \$24666.6 | RTO Charge: \$13596.6, 12x12 = \$351 a month for 60 months | 60 Payments = \$21064 | RTO Charge: \$11582.92, 12x14 = \$367.66 a month for 60 months | 60 Payments = \$22059.6 | RTO Charge: \$12132.84, 12x16 = \$389.09 a month for 60 months | 60 Payments = \$23345.4 | RTO Charge: \$12839.96, 12x18 = \$410.04 a month for 60 months | 60 Payments = \$24602.4 | RTO Charge: \$13531.28, 12x20 = \$430.47 a month for 60 months | 60 Payments = \$25828.2 | RTO Charge: \$14205.4, 12x24 = \$473.67 a month for 60 months | 60 Payments = \$28420.2 | RTO Charge: \$15631.04, 12x28 = \$512.61 a month for 60 months | 60 Payments = \$30756.6 | RTO Charge: \$16916.68, 12x32 = \$558.48 a month for 60 months | 60 Payments = \$33508.8 | RTO Charge: \$18429.92, 12x36 = \$600.79 a month for 60 months | 60 Payments = \$36047.4 | RTO Charge: \$19826.16,
Painted Cape Dormer - 10x10 = \$2915.2 a month for 60 months | 60 Payments = \$17491.2 | RTO Charge: \$9620.2, 10x12 = \$306.98 a month for 60 months | 60 Payments = \$18418.8 | RTO Charge: \$10130.4, 10x14 = \$325.25 a month for 60 months | 60 Payments = \$19515 | RTO Charge: \$10733.2, 10x16 = \$346.9 a month for 60 months | 60 Payments = \$20814 | RTO Charge: \$11447.8, 10x18 = \$368.69 a month for 60 months | 60 Payments = \$22121.4 | RTO Charge: \$12166.8, 10x20 = \$388.59 a month for 60 months | 60 Payments = \$23315.4 | RTO Charge: \$12823.4, 12x12 = \$330.37 a month for 60 months | 60 Payments = \$19822.2 | RTO Charge: \$10902.12, 12x14 = \$348.25 a month for 60 months | 60 Payments = \$20895 | RTO Charge: \$11492.24, 12x16 = \$367.31 a month for 60 months | 60 Payments = \$22038.4 | RTO Charge: \$12121.16, 12x18 = \$387.41 a month for 60 months | 60 Payments = \$23244.6 | RTO Charge: \$12794.48, 12x20 = \$406.88 a month for 60 months | 60 Payments = \$24412.8 | RTO Charge: \$13427, 12x24 = \$446.08 a month for 60 months | 60 Payments = \$26784.8 | RTO Charge: \$14720.64, 12x28 = \$484.87 a month for 60 months | 60 Payments = \$29092.2 | RTO Charge: \$16000.88, 12x32 = \$524.11 a month for 60 months | 60 Payments = \$31446.6 | RTO Charge: \$17295.72, 12x36 = \$564.71 a month for 60 months | 60 Payments = \$33882.6 | RTO Charge: \$18635.36,



Visit www.CedarRockBarns.com For More Info, Pictures & To Place An Order

Online Ordering Available At: www.CedarRockBarns.com - Purchase or Rent To Own - ©Cedar Rock Barns, LLC - February 2024 - All Rights Reserved -



Porches & Dormers

Available On: Cape Cod, Cottage, Dutch Barn & Garage
(Carriage House - Corner Porch Only)



Siding: Cape Cod Gray Trim: White
Shingles: Charcoal Gray

QP888

12x20 Vinyl Carriage House w/ Corner Porch & 2 Flowerboxes

Porches	
Porch Standard Features	
4' Deep	
Poly Decking	
Vinyl Railing & Post	
32" Pre-hung Door	
2 - 21x27 Windows	
** Porch Does Not Add To Building Size **	
10' Wide x 4' Deep	\$ 1,523
12' Wide x 4' Deep	\$ 1,554
14' Wide x 4' Deep	\$ 1,785
16' Wide x 4' Deep	\$ 2,205
4' x 8' Corner Porch	\$ 1,759



Siding: Adobe Cream
Trim: White Shingles: Black

QP889

10x16 Vinyl Cottage w/ Porch, Duratemp Doors, 2 Additional 21x27 Windows, 2 Flowerboxes



Siding: Gray Trim: White
Shingles: Charcoal Gray

QP890

12x16 Painted Cape Cod w/ Deluxe, 6' Chalet Dormer, Corner Porch, Upgraded 24x36 Windows, 2 - 10x24 Transom Windows, 1 - Flowerbox

Siding: Coastal Sage Trim: White
Shingles: Charcoal Gray



12x20 Vinyl Cape Cod w/ Deluxe, Vertical B&B Siding, 32" 9-lite, 3 - 24x36 Windows, 8' Cape Cod Dormer

QP891

Dormers	
6' Chalet Dormer (A-Frame)	\$ 630.00
8' Chalet Dormer (A-Frame)	\$ 800.00
6' Wide Cape Cod Dormer - 2 Windows (Cape Cod Only)	\$ 1,050.00
8' Wide Cape Cod Dormer - 3 Windows (Cape Cod Only)	\$ 1,155.00
2' Wide Window Dormer	
Steel Roof On Dormer or Hip Barn	\$ 300.00

This advertised transaction is a rental-purchase agreement (also referred to as a RTO agreement). The "Total of All Payments" does not include applicable taxes or optional fees and other charges (such as late charges) that you may incur. You will not own or obtain equity in the merchandise until the total amount necessary to acquire ownership is paid in full or you exercise your early purchase option. Ownership is optional. Delivery fees may apply. "No Credit Needed" does not mean or imply that no inquiry will be made of credit history or creditworthiness. We may check the past transactional history, but no established FICO score or credit history is necessary. *Free Delivery applies to new standard sized buildings in zone 1. Additional fees may apply for oversized buildings and long / difficult deliveries. Advertised rental rates and terms are for new merchandise at participating locations. Prices not valid outside the State Of Michigan, Some Exclusions May Apply.

Visit www.CedarRockBarns.com For More Info, Pictures & To Place An Order

- Online Ordering Available At: www.CedarRockBarns.com - Purchase or Rent To Own - ©Cedar Rock Barns, LLC - February 2024 - All Rights Reserved -





Chalet

*Approximate Height Based On A 10' Wide Building



Standard Chalet Includes: Double Doors, 9-Lite Pre-Hung, 2 - 24x36 Windows

Std. Double Doors: 8' Building: 56"x6' 10' Building: 60"x6' 12' 14' & 16' Building: 72"x6'

Max Roll Up Size: 8' Building: N/A 10' & 12' Building: 6'x6'4"

Double Doors & Roll Up Will Fit On Gable End Only



QP880

Siding: Monterey Sand Trim: White
Shingles: Weatherwood



QP881

Siding: Maple
Trim: Pacific Blue
Shingles: Dual Brown

Add The Deluxe Package For 10% Of The Base Price!

- 4" Roof Overhang w/ MiraTEC Trim
- Upgrade Std. Swing Doors to Duratemp w/ Transom
- 1/2 Round Vents On Gable Ends
- MiraTEC Trim on Roof Line/ Corners / Doors / Windows
- Architectural Shingles (30 Year)
- 3 Color Combination

Deluxe Vinyl Chalet



Siding: Smoke Gray Trim: White
Shingles: Dual Gray

QP882



QP883

Siding: Canyon Drift Trim: Navajo White
Shingles: Brpwm



QP884

Siding: Midnight Surf Trim: Gray
Shingles: Charcoal Gray

Vinyl Chalet

Size	Cash Price	RTO Starting At:
8x8	\$ 4,419.00	\$ 163.67 / Month*
8x10	\$ 4,696.00	\$ 173.93 / Month*
8x12	\$ 5,011.00	\$ 185.59 / Month*
8x14	\$ 5,306.00	\$ 196.52 / Month*
8x16	\$ 5,620.00	\$ 208.15 / Month*
10x10	\$ 5,236.00	\$ 193.93 / Month*
10x12	\$ 5,828.00	\$ 215.85 / Month*
10x14	\$ 6,270.00	\$ 232.22 / Month*
10x16	\$ 6,515.00	\$ 241.30 / Month*
10x18	\$ 6,958.00	\$ 257.70 / Month*
10x20	\$ 7,219.00	\$ 267.37 / Month*
12x12	\$ 6,672.00	\$ 247.11 / Month*
12x14	\$ 7,312.00	\$ 270.81 / Month*
12x16	\$ 7,571.00	\$ 280.41 / Month*
12x18	\$ 7,972.00	\$ 295.26 / Month*
12x20	\$ 8,752.00	\$ 324.15 / Month*
12x24	\$ 9,508.00	\$ 352.15 / Month*
12x28	\$10,315.00	\$ 382.04 / Month*
12x32	\$11,677.00	\$ 432.48 / Month*
12x36	\$12,932.00	\$ 478.96 / Month*

Ramps

Up To 6' Wide	\$ 147.00
---------------	-----------

Windows

Delete Window	\$ (50.00)
21x27 Window	\$ 105.00
24x36 Window	\$ 152.00
10"x24" Transom	\$ 95.00

Roll Up Door

5'x6'4" Roll Up	\$ 683.00
6'x6'4" Roll Up	\$ 735.00



View Additional Options & Color Choices On Pages 30-34



*This advertised transaction is a rental-purchase agreement (also referred to as an RTO agreement). The Total of All Payments does not include applicable taxes or optional fees and other charges (such as late charges) that you may incur. You will not own or obtain equity in the merchandise until the total amount necessary to acquire ownership is paid in full or you exercise your early purchase option. Ownership is optional. Delivery fees may apply. No Credit Needed does not mean or imply that no inquiry will be made of credit history or creditworthiness. We may check the past transactional history, but no established FICO score or credit history is necessary. Free Delivery applies to new standard sized buildings in zone 1. Additional fees may apply for oversized buildings and long / difficult deliveries. Advertised rental rates and terms are for new merchandise at participating locations. Prices not valid outside the State Of Michigan. Some Exclusions May Apply.

8x8 = \$163.67 a month for 60 months | 60 Payments = \$9820.2 | RTO Charge: \$5401.2, 8x10 = \$173.93 a month for 60 months | 60 Payments = \$10435.8 | RTO Charge: \$5739.8, 8x12 = \$185.59 a month for 60 months | 60 Payments = \$11135.4 | RTO Charge: \$6124.4, 8x14 = \$196.52 a month for 60 months | 60 Payments = \$11791.2 | RTO Charge: \$6485.2, 8x16 = \$208.15 a month for 60 months | 60 Payments = \$12489 | RTO Charge: \$6869, 10x10 = \$193.93 a month for 60 months | 60 Payments = \$11635.8 | RTO Charge: \$6399.8, 10x12 = \$215.85 a month for 60 months | 60 Payments = \$12951 | RTO Charge: \$7123, 10x14 = \$232.22 a month for 60 months | 60 Payments = \$13933.2 | RTO Charge: \$7663.2, 10x16 = \$241.3 a month for 60 months | 60 Payments = \$14478 | RTO Charge: \$7963, 10x18 = \$257.7 a month for 60 months | 60 Payments = \$15462 | RTO Charge: \$8504, 10x20 = \$267.37 a month for 60 months | 60 Payments = \$16042.2 | RTO Charge: \$8823.2, 12x12 = \$247.11 a month for 60 months | 60 Payments = \$14826.6 | RTO Charge: \$8154.6, 12x14 = \$270.81 a month for 60 months | 60 Payments = \$16248.6 | RTO Charge: \$8936.6, 12x16 = \$280.41 a month for 60 months | 60 Payments = \$16824.6 | RTO Charge: \$9253.6, 12x18 = \$295.26 a month for 60 months | 60 Payments = \$17715.6 | RTO Charge: \$9743.6, 12x20 = \$324.15 a month for 60 months | 60 Payments = \$19498 | RTO Charge: \$10697, 12x24 = \$352.15 a month for 60 months | 60 Payments = \$21129 | RTO Charge: \$11621, 12x28 = \$382.04 a month for 60 months | 60 Payments = \$22922.4 | RTO Charge: \$12607.4, 12x32 = \$432.48 a month for 60 months | 60 Payments = \$25948.8 | RTO Charge: \$14271.8, 12x36 = \$478.96 a month for 60 months | 60 Payments = \$28737.6 | RTO Charge: \$15805.6,



Visit www.CedarRockBarns.com For More Info, Pictures & To Place An Order

Online Ordering Available At: www.CedarRockBarns.com - Purchase or Rent To Own - ©Cedar Rock Barns, LLC - February 2024 - All Rights Reserved -



Chalet

*Approximate Height Based On A 10' Wide Building



Standard Chalet Includes: Double Doors, 9-Lite Pre-Hung, 2 - 24x36 Windows

Std. Double Doors: 8' Building: 56"x6' 10' Building: 60"x6' 12', 14' & 16' Building: 72"x6'

Max Roll Up Size: 8' Building: N/A 10' & 12' Building: 6'x6'4"

Double Doors & Roll Up Will Fit On Gable End Only



QP875

Siding: Cape Cod Gray Trim: White
Shingles: Black



QP876

Siding: Dark Brown
Trim: Statius Almond Shingles: Dual Brown

Painted Chalet

Size	Cash Price	RTO Starting At:
8x12	\$ 4,494.00	\$ 166.44 / Month*
8x14	\$ 4,800.00	\$ 177.78 / Month*
8x16	\$ 5,074.00	\$ 187.93 / Month*
10x10	\$ 4,869.00	\$ 180.33 / Month*
10x12	\$ 5,074.00	\$ 187.93 / Month*
10x14	\$ 5,454.00	\$ 202.00 / Month*
10x16	\$ 5,810.00	\$ 215.19 / Month*
10x18	\$ 6,192.00	\$ 229.33 / Month*
10x20	\$ 6,613.00	\$ 244.93 / Month*
12x12	\$ 5,539.00	\$ 205.15 / Month*
12x14	\$ 5,986.00	\$ 221.70 / Month*
12x16	\$ 6,433.00	\$ 238.26 / Month*
12x18	\$ 6,883.00	\$ 254.93 / Month*
12x20	\$ 7,319.00	\$ 271.07 / Month*
12x24	\$ 8,193.00	\$ 303.44 / Month*
12x28	\$ 9,063.00	\$ 335.67 / Month*
12x32	\$10,022.00	\$ 371.19 / Month*
12x36	\$10,844.00	\$ 401.63 / Month*

Add The Deluxe Package For 10% Of The Base Price!

- 4" Roof Overhang w/ MiraTEC Trim
- Upgrade Std. Swing Doors to Duratemp w/ Transom
- 1/2 Round Vents On Gable Ends
- MiraTEC Trim on Roof Line/ Corners / Doors / Windows
- Architectural Shingles (30 Year)
- 3 Color Combination

QP877

Deluxe Painted Chalet



Siding: Avocado Trim: Clay
Shingles: Black



QP878

Siding: Almond Trim: Navajo White
Shingles: Dual Brown



QP879

Siding: Jamestown Red Trim: White
Shingles: Dual Gray



Ramps	
Up To 6' Wide	\$ 147.00
Windows	
Delete Window	\$ (50.00)
21x27 Window	\$ 105.00
24x36 Window	\$ 152.00
10"x24" Transom	\$ 95.00
Roll Up Door	
5'x6'4" Roll Up	\$ 683.00
6'x6'4" Roll Up	\$ 735.00

View Additional Options & Color Choices On Pages 30-34

*This advertised transaction is a rental-purchase agreement (also referred to as an RTO agreement). The Total of All Payments does not include applicable taxes or optional fees and other charges (such as late charges) that you may incur. You will not own or obtain equity in the merchandise until the total amount necessary to acquire ownership is paid in full or you exercise your early purchase option. Ownership is optional. Delivery fees may apply. No Credit Needed does not mean or imply that no inquiry will be made of credit history or creditworthiness. We may check the past transactional history, but no established FICO score or credit history is necessary. Free Delivery applies to new standard sized buildings in zone 1.

Additional fees may apply for oversized buildings and long / difficult deliveries. Advertised rental rates and terms are for new merchandise at participating locations. Prices not valid outside the State Of Michigan. Some Exclusions May Apply.

8x12 = \$166.44 a month for 60 months | 60 Payments = \$9986.4 | RTO Charge: \$5492.4, 8x14 = \$177.78 a month for 60 months | 60 Payments = \$10666.8 | RTO Charge: \$5866.8, 8x16 = \$187.93 a month for 60 months | 60 Payments = \$11275.8 | RTO Charge: \$6201.8, 10x10 = \$180.33 a month for 60 months | 60 Payments = \$10819.8 | RTO Charge: \$5950.8, 10x12 = \$187.93 a month for 60 months | 60 Payments = \$11275.8 | RTO Charge: \$6201.8, 10x14 = \$202.00 a month for 60 months | 60 Payments = \$12120 | RTO Charge: \$6666, 10x16 = \$215.19 a month for 60 months | 60 Payments = \$12911.4 | RTO Charge: \$7101.4, 10x18 = \$229.33 a month for 60 months | 60 Payments = \$13759.8 | RTO Charge: \$7567.8, 10x20 = \$244.93 a month for 60 months | 60 Payments = \$14695.8 | RTO Charge: \$8022.8, 12x12 = \$205.15 a month for 60 months | 60 Payments = \$12309 | RTO Charge: \$6770, 12x14 = \$221.70 a month for 60 months | 60 Payments = \$13302 | RTO Charge: \$7316, 12x16 = \$238.26 a month for 60 months | 60 Payments = \$14295.6 | RTO Charge: \$7862.6, 12x18 = \$254.93 a month for 60 months | 60 Payments = \$15295.8 | RTO Charge: \$8412.8, 12x20 = \$271.07 a month for 60 months | 60 Payments = \$16264.2 | RTO Charge: \$8945.2, 12x24 = \$303.44 a month for 60 months | 60 Payments = \$18206.4 | RTO Charge: \$10013.4, 12x28 = \$335.67 a month for 60 months | 60 Payments = \$20140.2 | RTO Charge: \$11077.2, 12x32 = \$371.19 a month for 60 months | 60 Payments = \$22271.4 | RTO Charge: \$12249.4, 12x36 = \$401.63 a month for 60 months | 60 Payments = \$24097.8 | RTO Charge: \$13253.8,

Visit www.CedarRockBarns.com For More Info, Pictures & To Place An Order

- Online Ordering Available At: www.CedarRockBarns.com - Purchase or Rent To Own - ©Cedar Rock Barns, LLC - February 2024 - All Rights Reserved -



12" O.C.
Treated
Floor Joist

5/8"
Flooring

16" O.C.
Wall Framing

7' 4"
Sidewall Height

10' 3"
Total Height*

Hip Barn

90 DAY
MONEY BACK
GUARANTEE

10 YEAR
WARRANTY

PREMIUM
PREMIUM

*Approximate Height Based Off A 10' Wide Building

Standard Hip Barn Includes: Double Doors, 2 - 21x27 Windows

Std. Double Doors: 8' Building: 56"x6' 10' Building: 60"x6' 12' & 14' Buildings: 72"x6'

Max Roll Up Size: 8', 10', 12' & 14' Buildings: 6'x6'4"

Doors / Roll Up Will Fit On Any Wall



QP887

Siding: Maple Trim: Monterey Sand
Shingles: Weatherwood

Vinyl Hip Barn

Size	Cash Price	RTO Starting At:
8x8	\$ 4,578.00	\$ 169.56 / Month*
8x10	\$ 4,847.00	\$ 179.52 / Month*
8x12	\$ 5,146.00	\$ 190.59 / Month*
8x14	\$ 5,450.00	\$ 201.85 / Month*
8x16	\$ 5,774.00	\$ 213.85 / Month*
10x10	\$ 5,380.00	\$ 199.26 / Month*
10x12	\$ 5,649.00	\$ 209.22 / Month*
10x14	\$ 6,139.00	\$ 227.37 / Month*
10x16	\$ 6,469.00	\$ 239.59 / Month*
10x18	\$ 6,796.00	\$ 251.70 / Month*
10x20	\$ 7,181.00	\$ 265.96 / Month*
12x12	\$ 5,889.00	\$ 218.11 / Month*
12x14	\$ 6,589.00	\$ 244.04 / Month*
12x16	\$ 7,143.00	\$ 264.56 / Month*
12x18	\$ 7,834.00	\$ 290.15 / Month*
12x20	\$ 8,435.00	\$ 312.41 / Month*
12x24	\$ 9,551.00	\$ 353.74 / Month*
12x28	\$ 10,604.00	\$ 392.74 / Month*
12x32	\$ 12,005.00	\$ 444.63 / Month*
12x36	\$ 13,296.00	\$ 492.44 / Month*
14x20	\$ 9,340.00	\$ 345.93 / Month*
14x24	\$ 10,639.00	\$ 394.04 / Month*
14x28	\$ 11,694.00	\$ 433.11 / Month*
14x32	\$ 12,827.00	\$ 475.07 / Month*
14x36	\$ 14,098.00	\$ 522.15 / Month*
14x40	\$ 15,486.00	\$ 573.56 / Month*

Ramps

Up To 6' Wide \$ 147.00

Windows

Delete Window \$ (50.00)

21x27 Window \$ 105.00



View Additional Options & Color Choices On Pages 30-34

*This advertised transaction is a rental-purchase agreement (also referred to as an RTO agreement). The Total of All Payments does not include applicable taxes or optional fees and other charges (such as late charges) that you may incur. You will not own or obtain equity in the merchandise until the total amount necessary to acquire ownership is paid in full or you exercise your early purchase option. Ownership is optional. Delivery fees may apply. No Credit Needed does not mean or imply that no inquiry will be made of credit history or creditworthiness. We may check the past transactional history, but no established FICO score or credit history is necessary. Free Delivery applies to new standard sized buildings in zone 1. Additional fees may apply for oversized buildings and long / difficult deliveries. Advertised rental rates and terms are for new merchandise at participating locations. Prices not valid outside the State Of Michigan. Some Exclusions May Apply.

8x8 = \$169.56 a month for 60 months | 60 Payments = \$10173.6 | RTO Charge: \$595.6, 8x10 = \$179.52 a month for 60 months | 60 Payments = \$10771.2 | RTO Charge: \$594.2, 8x12 = \$190.59 a month for 60 months | 60 Payments = \$11435.4 | RTO Charge: \$628.4, 8x14 = \$201.85 a month for 60 months | 60 Payments = \$12111 | RTO Charge: \$661, 8x16 = \$213.85 a month for 60 months | 60 Payments = \$12831 | RTO Charge: \$705.7, 10x10 = \$199.26 a month for 60 months | 60 Payments = \$11955.6 | RTO Charge: \$675.6, 10x12 = \$209.22 a month for 60 months | 60 Payments = \$12533.2 | RTO Charge: \$690.2, 10x14 = \$227.37 a month for 60 months | 60 Payments = \$13642.2 | RTO Charge: \$750.2, 10x16 = \$239.59 a month for 60 months | 60 Payments = \$14375.4 | RTO Charge: \$790.4, 10x18 = \$251.7 a month for 60 months | 60 Payments = \$15102 | RTO Charge: \$830.6, 10x20 = \$265.96 a month for 60 months | 60 Payments = \$15957.6 | RTO Charge: \$876.6, 12x12 = \$218.11 a month for 60 months | 60 Payments = \$13086.6 | RTO Charge: \$719.6, 12x14 = \$244.04 a month for 60 months | 60 Payments = \$14642.4 | RTO Charge: \$805.4, 12x16 = \$264.56 a month for 60 months | 60 Payments = \$15873.6 | RTO Charge: \$873.0, 12x18 = \$290.15 a month for 60 months | 60 Payments = \$17409 | RTO Charge: \$957.5, 12x20 = \$312.41 a month for 60 months | 60 Payments = \$18744.6 | RTO Charge: \$1030.6, 12x24 = \$353.74 a month for 60 months | 60 Payments = \$21234.4 | RTO Charge: \$11673.4, 12x28 = \$392.74 a month for 60 months | 60 Payments = \$23564.4 | RTO Charge: \$12960.4, 12x32 = \$444.63 a month for 60 months | 60 Payments = \$26677.8 | RTO Charge: \$14672.8, 12x36 = \$492.44 a month for 60 months | 60 Payments = \$29546.4 | RTO Charge: \$16250.4, 14x20 = \$345.93 a month for 60 months | 60 Payments = \$20755.8 | RTO Charge: \$11415.8, 14x24 = \$394.04 a month for 60 months | 60 Payments = \$23642.4 | RTO Charge: \$13003.4, 14x28 = \$433.11 a month for 60 months | 60 Payments = \$25986.6 | RTO Charge: \$14292.6, 14x32 = \$475.07 a month for 60 months | 60 Payments = \$28504.2 | RTO Charge: \$15672.2, 14x36 = \$522.15 a month for 60 months | 60 Payments = \$31329 | RTO Charge: \$17231, 14x40 = \$573.56 a month for 60 months | 60 Payments = \$34413.6 | RTO Charge: \$18927.6,



Visit www.CedarRockBarns.com For More Info, Pictures & To Place An Order

Online Ordering Available At: www.CedarRockBarns.com - Purchase or Rent To Own - ©Cedar Rock Barns, LLC - February 2024 - All Rights Reserved -

12" O.C.
Floor Joist

5/8"
Flooring

16" O.C.
Wall Framing

7' 4"
Sidewall Height

10' 3"
Total Height*

Hip Barn

90 DAY
MONEY BACK
GUARANTEE

WARRANTY
10 YEAR
WARRANTY

PREMIUM
PREMIUM

*Approximate Height Based Off A 10' Wide Building

Standard Hip Barn Includes: Double Doors, 2 - 21x27 Windows

Std. Double Doors: 8' Building: 56"x6' 10' Building: 60"x6' 12' & 14' Buildings: 72"x6'

Max Roll Up Size: 8', 10', 12' & 14' Buildings: 6'x6'4"

Doors / Roll Up Will Fit On Any Wall



QP885

Siding: Jamestown Red Trim: White
Shingles: Charcoal Gray

Deluxe Painted Hip Barn



QP886

Siding: Cape Cod Gray Trim: Gray
Shingles: Charcoal Gray



View Additional Options & Color Choices On Pages 30-34

Painted Hip Barn

Size	Cash Price	RTO Starting At:
8x8	\$ 4,298.00	\$ 159.19 / Month*
8x10	\$ 4,549.00	\$ 168.48 / Month*
8x12	\$ 4,829.00	\$ 178.85 / Month*
8x14	\$ 5,112.00	\$ 189.33 / Month*
8x16	\$ 5,414.00	\$ 200.52 / Month*
10x10	\$ 5,046.00	\$ 186.89 / Month*
10x12	\$ 5,300.00	\$ 196.30 / Month*
10x14	\$ 5,759.00	\$ 213.30 / Month*
10x16	\$ 6,064.00	\$ 224.59 / Month*
10x18	\$ 6,370.00	\$ 235.93 / Month*
10x20	\$ 6,729.00	\$ 249.22 / Month*
12x12	\$ 5,524.00	\$ 204.59 / Month*
12x14	\$ 6,176.00	\$ 228.74 / Month*
12x16	\$ 6,696.00	\$ 248.00 / Month*
12x18	\$ 7,341.00	\$ 271.89 / Month*
12x20	\$ 7,902.00	\$ 292.67 / Month*
12x24	\$ 8,946.00	\$ 331.33 / Month*
12x28	\$ 9,931.00	\$ 367.81 / Month*
12x32	\$11,238.00	\$ 416.22 / Month*
12x36	\$12,446.00	\$ 460.96 / Month*
14x20	\$ 8,749.00	\$ 324.04 / Month*
14x24	\$ 9,963.00	\$ 369.00 / Month*
14x28	\$10,948.00	\$ 405.48 / Month*
14x32	\$12,006.00	\$ 444.67 / Month*
14x36	\$13,195.00	\$ 488.70 / Month*
14x40	\$14,492.00	\$ 536.74 / Month*

Ramps

Up To 6' Wide \$ 147.00

Windows

Delete Window \$ (50.00)

21x27 Window \$ 105.00



*This advertised transaction is a rental-purchase agreement (also referred to as an RTO agreement). The Total of All Payments does not include applicable taxes or optional fees and other charges (such as late charges) that you may incur. You will not own or obtain equity in the merchandise until the total amount necessary to acquire ownership is paid in full or you exercise your early purchase option. Ownership is optional. Delivery fees may apply. No Credit Needed does not mean or imply that no inquiry will be made of credit history or creditworthiness. We may check the past transactional history, but no established FICO score or credit history is necessary. Free Delivery applies to new standard sized buildings in zone 1. Additional fees may apply for oversized buildings and long / difficult deliveries. Advertised rental rates and terms are for new merchandise at participating locations. Prices not valid outside the State Of Michigan. Some Exclusions May Apply.

8x8 = \$159.19 a month for 60 months | 60 Payments = \$9551.4 | RTO Charge: \$5253.4, 8x10 = \$168.48 a month for 60 months | 60 Payments = \$10100.8 | RTO Charge: \$5559.8, 8x12 = \$178.85 a month for 60 months | 60 Payments = \$10703.1 | RTO Charge: \$5902, 8x14 = \$189.33 a month for 60 months | 60 Payments = \$11359.8 | RTO Charge: \$6247.8, 8x16 = \$200.52 a month for 60 months | 60 Payments = \$12031.2 | RTO Charge: \$6617.2, 10x10 = \$186.89 a month for 60 months | 60 Payments = \$11213.4 | RTO Charge: \$6167.4, 10x12 = \$196.30 a month for 60 months | 60 Payments = \$11778 | RTO Charge: \$6478, 10x14 = \$213.30 a month for 60 months | 60 Payments = \$12798 | RTO Charge: \$7039, 10x16 = \$224.59 a month for 60 months | 60 Payments = \$13475.4 | RTO Charge: \$7411.4, 10x18 = \$235.93 a month for 60 months | 60 Payments = \$14155.8 | RTO Charge: \$7785.8, 10x20 = \$249.22 a month for 60 months | 60 Payments = \$14953.2 | RTO Charge: \$8224.2, 12x12 = \$204.59 a month for 60 months | 60 Payments = \$12275.4 | RTO Charge: \$6751.4, 12x14 = \$228.74 a month for 60 months | 60 Payments = \$13724.4 | RTO Charge: \$7548.4, 12x16 = \$248 a month for 60 months | 60 Payments = \$14880 | RTO Charge: \$8184, 12x18 = \$271.89 a month for 60 months | 60 Payments = \$16313.4 | RTO Charge: \$8972.4, 12x20 = \$292.67 a month for 60 months | 60 Payments = \$17560.2 | RTO Charge: \$9658.2, 12x24 = \$331.33 a month for 60 months | 60 Payments = \$19879.8 | RTO Charge: \$10933.8, 12x28 = \$367.81 a month for 60 months | 60 Payments = \$22068.6 | RTO Charge: \$12137.6, 12x32 = \$416.22 a month for 60 months | 60 Payments = \$24973.2 | RTO Charge: \$13735.2, 12x36 = \$460.96 a month for 60 months | 60 Payments = \$27657.6 | RTO Charge: \$15211.6, 14x20 = \$324.04 a month for 60 months | 60 Payments = \$19442.4 | RTO Charge: \$10693.4, 14x24 = \$369 a month for 60 months | 60 Payments = \$22140 | RTO Charge: \$12177, 14x28 = \$405.48 a month for 60 months | 60 Payments = \$24328.8 | RTO Charge: \$13380.8, 14x32 = \$444.67 a month for 60 months | 60 Payments = \$26680.2 | RTO Charge: \$14674.2, 14x36 = \$488.74 a month for 60 months | 60 Payments = \$29322 | RTO Charge: \$16127, 14x40 = \$536.74 a month for 60 months | 60 Payments = \$32204.4 | RTO Charge: \$17112.4,

Visit www.CedarRockBarns.com For More Info, Pictures & To Place An Order

Online Ordering Available At: www.CedarRockBarns.com · Purchase or Rent To Own · ©Cedar Rock Barns, LLC - February 2024 · All Rights Reserved





Klassic Studio



Vinyl Klassic Studio		
Size	Cash Price	RTO Starting At:
8x12	\$ 6,804.00	\$ 252.00 / Month*
8x14	\$ 7,379.00	\$ 273.30 / Month*
8x16	\$ 7,732.00	\$ 286.37 / Month*
10x10	\$ 6,762.00	\$ 250.44 / Month*
10x12	\$ 7,300.00	\$ 270.37 / Month*
10x14	\$ 7,945.00	\$ 294.26 / Month*
10x16	\$ 8,737.00	\$ 323.59 / Month*
10x18	\$ 9,540.00	\$ 353.33 / Month*
10x20	\$10,232.00	\$ 378.96 / Month*
12x12	\$ 8,125.00	\$ 300.93 / Month*
12x14	\$ 8,689.00	\$ 321.81 / Month*
12x16	\$ 9,435.00	\$ 349.44 / Month*
12x18	\$10,163.00	\$ 376.41 / Month*
12x20	\$10,870.00	\$ 402.59 / Month*
12x24	\$12,366.00	\$ 458.00 / Month*
12x28	\$13,712.00	\$ 507.85 / Month*
12x32	\$15,304.00	\$ 566.81 / Month*
12x36	\$16,772.00	\$ 621.19 / Month*

Standard Features Include:
9' Front Wall
7' Backwall
2 - 24"x36" Windows w/ Screens
2 - 10"x72" Transom Windows
24" Wide Open Overhang
Steel Roof
Vented Eaves
60" Or 72" DET Doors w/ Transom
2"x6" Rafters 16" OC
2"x4" Wall Framing 16" OC
Vertical Vinyl Siding OR Duratemp Painted Siding

Painted Klassic Studio		
Size	Cash Price	RTO Starting At:
8x12	\$ 6,004.00	\$ 222.37 / Month*
8x14	\$ 6,461.00	\$ 239.30 / Month*
8x16	\$ 6,777.00	\$ 251.00 / Month*
10x10	\$ 5,929.00	\$ 219.59 / Month*
10x12	\$ 6,453.00	\$ 239.00 / Month*
10x14	\$ 7,075.00	\$ 262.04 / Month*
10x16	\$ 7,822.00	\$ 289.70 / Month*
10x18	\$ 8,575.00	\$ 317.59 / Month*
10x20	\$ 9,256.00	\$ 342.81 / Month*
12x12	\$ 7,253.00	\$ 268.63 / Month*
12x14	\$ 7,853.00	\$ 290.85 / Month*
12x16	\$ 8,503.00	\$ 314.93 / Month*
12x18	\$ 9,181.00	\$ 340.04 / Month*
12x20	\$ 9,845.00	\$ 364.63 / Month*
12x24	\$11,176.00	\$ 413.93 / Month*
12x28	\$12,491.00	\$ 462.63 / Month*
12x32	\$13,826.00	\$ 512.07 / Month*
12x36	\$15,202.00	\$ 563.04 / Month*



View Additional Options & Color Choices On Pages 30-34

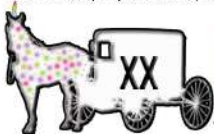
*This advertised transaction is a rental-purchase agreement (also referred to as an RTO agreement). The Total of All Payments does not include applicable taxes or optional fees and other charges (such as late charges) that you may incur. You will not own or obtain equity in the merchandise until the total amount necessary to acquire ownership is paid in full or you exercise your early purchase option. Ownership is optional. Delivery fees may apply. No Credit Needed does not mean or imply that no inquiry will be made of credit history or creditworthiness. We may check the past transactional history, but no established FICO score or credit history is necessary. Free Delivery applies to new standard sized buildings in zone 1. Additional fees may apply for oversized buildings and long / difficult deliveries. Advertised rental rates and terms are for new merchandise at participating locations. Prices not valid outside the State Of Michigan. Some Exclusions May Apply.

Painted Klassic Studio:

8x12 = \$222.37 a month for 60 months | 60 Payments = \$13342.2 | RTO Charge: \$7388.2, 8x14 = \$239.3 a month for 60 months | 60 Payments = \$14358 | RTO Charge: \$7897, 8x16 = \$251 a month for 60 months | 60 Payments = \$15060 | RTO Charge: \$8283, 10x10 = \$219.59 a month for 60 months | 60 Payments = \$13175.4 | RTO Charge: \$7464, 10x12 = \$239 a month for 60 months | 60 Payments = \$14340 | RTO Charge: \$7887, 10x14 = \$262.04 a month for 60 months | 60 Payments = \$15722.4 | RTO Charge: \$8647.4, 10x16 = \$289.7 a month for 60 months | 60 Payments = \$17382 | RTO Charge: \$9560, 10x18 = \$317.59 a month for 60 months | 60 Payments = \$19055.4 | RTO Charge: \$10480.4, 10x20 = \$342.81 a month for 60 months | 60 Payments = \$20568.6 | RTO Charge: \$11312.6, 12x12 = \$268.63 a month for 60 months | 60 Payments = \$16117.8 | RTO Charge: \$8864.8, 12x14 = \$290.85 a month for 60 months | 60 Payments = \$17451 | RTO Charge: \$9598, 12x16 = \$314.93 a month for 60 months | 60 Payments = \$18895.8 | RTO Charge: \$10392.8, 12x18 = \$340.04 a month for 60 months | 60 Payments = \$20402.4 | RTO Charge: \$11221.4, 12x20 = \$364.63 a month for 60 months | 60 Payments = \$21877.8 | RTO Charge: \$12032.8, 12x24 = \$413.93 a month for 60 months | 60 Payments = \$24835.8 | RTO Charge: \$13659.8, 12x28 = \$462.63 a month for 60 months | 60 Payments = \$27757.8 | RTO Charge: \$15266.8, 12x32 = \$512.07 a month for 60 months | 60 Payments = \$30724.2 | RTO Charge: \$16998.2, 12x36 = \$563.04 a month for 60 months | 60 Payments = \$33782.4 | RTO Charge: \$18580.4,

Vinyl Klassic Studio

8x12 = \$252 a month for 60 months | 60 Payments = \$15120 | RTO Charge: \$8316, 8x14 = \$273.3 a month for 60 months | 60 Payments = \$16398 | RTO Charge: \$9019, 8x16 = \$286.37 a month for 60 months | 60 Payments = \$17182.2 | RTO Charge: \$9460.2, 10x10 = \$250.44 a month for 60 months | 60 Payments = \$15026.4 | RTO Charge: \$8264.4, 10x12 = \$270.37 a month for 60 months | 60 Payments = \$16222.2 | RTO Charge: \$8922.2, 10x14 = \$294.26 a month for 60 months | 60 Payments = \$17655.8 | RTO Charge: \$9710.6, 10x16 = \$323.59 a month for 60 months | 60 Payments = \$19415.4 | RTO Charge: \$10678.4, 10x18 = \$353.33 a month for 60 months | 60 Payments = \$21199.8 | RTO Charge: \$11659.8, 10x20 = \$378.96 a month for 60 months | 60 Payments = \$22737.6 | RTO Charge: \$12505.6, 12x12 = \$300.93 a month for 60 months | 60 Payments = \$18055.8 | RTO Charge: \$9930.8, 12x14 = \$321.81 a month for 60 months | 60 Payments = \$19308.6 | RTO Charge: \$10619.6, 12x16 = \$349.44 a month for 60 months | 60 Payments = \$20966.4 | RTO Charge: \$11531.4, 12x18 = \$376.41 a month for 60 months | 60 Payments = \$22584.6 | RTO Charge: \$12421.6, 12x20 = \$402.59 a month for 60 months | 60 Payments = \$24155.4 | RTO Charge: \$13285.4, 12x24 = \$458 a month for 60 months | 60 Payments = \$27480 | RTO Charge: \$15114, 12x28 = \$507.85 a month for 60 months | 60 Payments = \$30471 | RTO Charge: \$16759, 12x32 = \$566.81 a month for 60 months | 60 Payments = \$34008.6 | RTO Charge: \$18704.6, 12x36 = \$621.19 a month for 60 months | 60 Payments = \$37271.4 | RTO Charge: \$20499.4,



Visit www.CedarRockBarns.com For More Info, Pictures & To Place An Order

Online Ordering Available At: www.CedarRockBarns.com · Purchase or Rent To Own · ©Cedar Rock Barns, LLC · February 2024 · All Rights Reserved



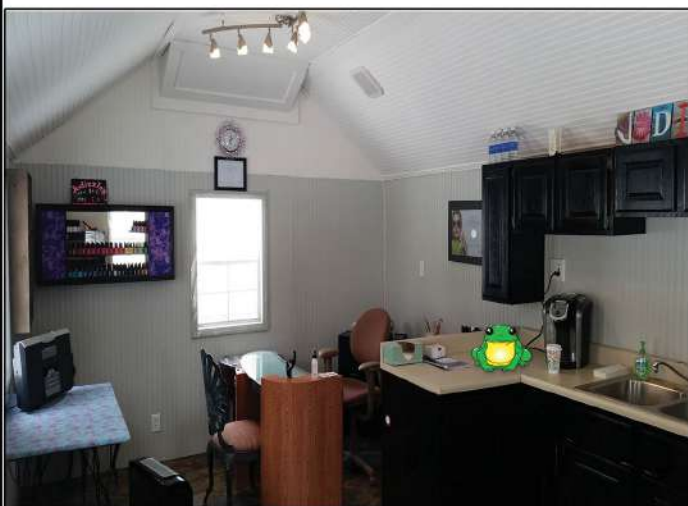
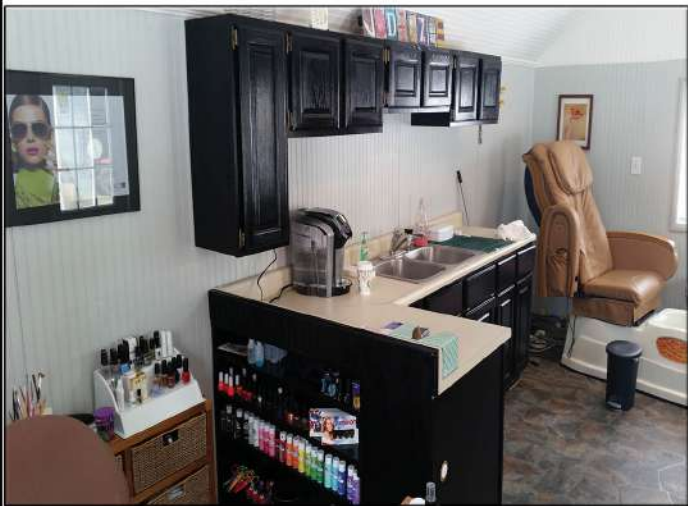
Customer Photos: Tiny Home & Salon



12x20 Painted Chalet - Nail Salon



12x16 Vinyl Cottage Workshop - Tiny Home



View More Customer Photos, Videos & Reviews Online At www.CedarRockBarns.com

- Online Ordering Available At: www.CedarRockBarns.com - Purchase or Rent To Own - ©Cedar Rock Barns, LLC - February 2024 - All Rights Reserved -



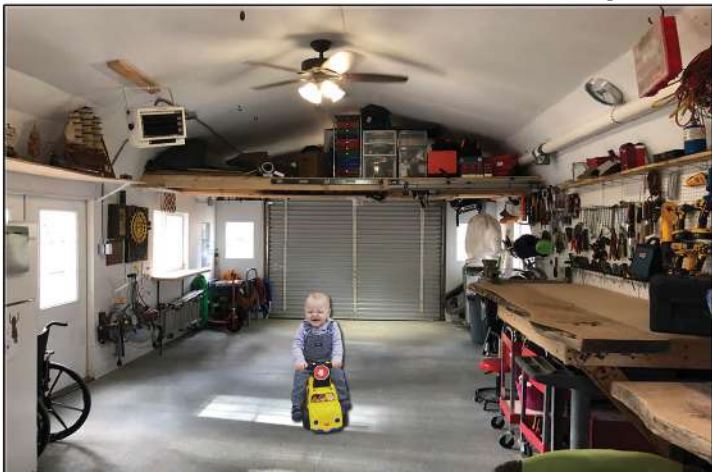
Customer Photos: Man Cave / Office / Workshop



16x36 Vinyl Dutch Barn w/ Raised Walls, French Doors, 6- 48x36 Insulated Windows, 2 - 21x27 Windows & 9x7 Roll Up



Crushed Stone Pad With Room For Fire Pit & Seating



Finished Inside By Customer: Insulation, Electric, Drywall



Winter Delivery - (Snow Must Be Cleared To Building Site)



Used As A Workshop / Office / Man Cave



Mule Delivery To Back Yard

Purchase or Rent To Own | View Pics, Videos & Order At: www.CedarRockBarns.com





Customer Photos: Tiny Home & Salon



Siding: Tuscan Clay | Trim: T Clay | Roof: Crimson Red

10x14 Vinyl Carriage House w/ Steel Roof, No windows



Siding: Monterey Sand | Trim: White | Roof: Dual Gray

12x16 Vinyl Cottage Workshop w/ Deluxe, Extra DET Doors & Ramp



Siding: Coastal Sage | Trim: Clay | Roof: Weatherwood

12x24 Painted Garage



Siding: Natural Linen | Trim: Red | Roof: Dual Brown

10x16 Vinyl Dutch Barn



Siding: Avocado | Trim: Almond | Roof: Dual Brown

12x16 Painted Cottage Workshop w/ Deluxe



Siding: Monterey Sand | Trim: White | Roof: Forest Green

10x12 Vinyl Cottage w/ Steel Roof, 2 - 10x72 Transom Windows & Ramp

View More Customer Photos, Videos & Reviews Online At www.CedarRockBarns.com



This advertised transaction is a rental-purchase agreement (also referred to as a RTO agreement). The "Total of All Payments" does not include applicable taxes or optional fees and other charges (such as late charges) that you may incur. You will not own or obtain equity in the merchandise until the total amount necessary to acquire ownership is paid in full or you exercise your early purchase option. Ownership is optional. Delivery fees may apply. "No Credit Needed" does not mean or imply that no inquiry will be made of credit history or creditworthiness. We may check the past transactional history, but no established FICO score or credit history is necessary. *"Free Delivery" applies to new standard sized buildings in zone 1. Additional fees may apply for oversized buildings and long / difficult deliveries. Adversised rental rates and terms are for new merchandise at participating locations. Prices not valid outside the State Of Michigan, Some Exclusions May Apply.



Customer Photos



Siding: Dark Brown | Trim: Almond | Roof: Rustic Red

12x24 Painted Cape Cod w/ Deluxe, Steel Roof, 4 - 24x36 Windows, 4 - 10x24 Transom, 8' Cape Cod Dormer, 8x7 Sectional w/ Windows & Hardware



Siding: Tuscan Clay | Trim: T Clay | Roof: Weatherwood

12x12 Vinyl High Barn w/ 8x7 Roll Up Door



Siding: Custom Match | Trim: White | Roof: Custom

12x20 Painted High Barn w/ Custom Paint Match



Siding: Harbor Blue | Trim: White | Roof: Black

8x12 Vinyl Carriage House w/ Deluxe & Premium Siding Color



Siding: White | Trim: White | Roof: Charcoal Gray

12x16 Vinyl Cape Cod w/ 72" Full View French Doors & No Windows



Siding: Vintage Wicker | Trim: White | Roof: Forest Green

12x16 Vinyl Cape Cod w/ 7x7 Roll Up, 32" 9-Lite Pre-Hung door, 2 - 21x27 Window, 1/2 Round Vents

View More Customer Photos, Videos & Reviews Online At www.CedarRockBarns.com

This advertised transaction is a rental-purchase agreement (also referred to as a RTO agreement). The "Total of All Payments" does not include applicable taxes or optional fees and other charges (such as late charges) that you may incur. You will not own or obtain equity in the merchandise until the total amount necessary to acquire ownership is paid in full or you exercise your early purchase option. Ownership is optional. Delivery fees may apply. "No Credit Needed" does not mean or imply that no inquiry will be made of credit history or creditworthiness. We may check the past transactional history, but no established FICO score or credit history is necessary. **"Free Delivery" applies to new standard sized buildings in zone 1. Additional fees may apply for oversized buildings and long / difficult deliveries. Advertised rental rates and terms are for new merchandise at participating locations. Prices not valid outside the State Of Michigan. Some Exclusions May Apply.

- Online Ordering Available At: www.CedarRockBarns.com - Purchase or Rent To Own - ©Cedar Rock Barns, LLC - February 2024 - All Rights Reserved -





Workbench

6' Workbench	\$ 96.00
8' Workbench	\$ 128.00
2' Wide Workbench (Linear Foot)	\$ 16.00
Shelf Under Workbench (Linear Foot)	\$ 11.30



Flooring & Insulation

3/4" Pressure Treated Plywood Flooring (Sq. Ft.)	\$ 1.32
2" Insulated Floor (Sq. Ft.)	\$ 4.35
Double Plywood Floor (Sq. Ft.)	\$ 2.63
12" to 8" OC Floor Joist Upgrade (Sq. Ft.)	\$ 1.36



Transom Windows & Skylights

10x72" Transom Window	\$ 194.00
10"x24" Transom Window	\$ 95.00
18"x72" Transom Window	\$ 247.00
21"x32" Poly Carb Skylight	\$ 126.00
Skylight Ridge Light 5' Minimum (/Ft.)	\$ 18.00



Loft (1' x Building Width)

8' Wide Building	\$ 31.52
10' Wide Buildings	\$ 39.40
12' Wide Buildings	\$ 47.28
14' Wide Buildings (2x6 Joist)	\$ 66.22
16' Wide Buildings (2x6 Joist)	\$ 75.68



Painted Interior

Up To 200 Sq. Feet	\$ 693.00
Larger Than 12x16 (Per Sq. Ft)	\$ 3.68



Windows

18x27 Window	\$ 105.00
21x27 Window	\$ 105.00
24x36 Window	\$ 152.00
30x36 Window	\$ 173.00
24x36 Insulated Window	\$ 299.00
48x36 Horizontal Insulated Window	\$ 352.00
28"x36" Vintage Window	\$ 210.00
Slat Shutters (Per Set)	\$ 79.00
Deluxe Window Trim (per window)	\$ 60.00
Flower Box	\$ 63.00



Roof Options

Steel Roof (Sq. Ft.)	\$ 2.60
Steel Roof - Copper	\$ 3.00
Architectural Shingles (Sq. Ft)	\$ 0.60
Steel Roof On Dormer or Hip Barn	\$ 300.00
Ice Guard (sq ft)	\$ 0.80
Tar Paper (Sq. Ft.)	\$ 0.32



Vents

Ridge Vent (4' Sections)	\$ 18.38
Eave Vent (Ln. Ft.)	\$ 4.50
Gable Vents (Painted Only)	\$ 68.00
1/2 Round Vent (Pair)	\$ 95.00



Miscellaneous

Weathervane - Horse & Buggy 22"	\$ 126.00
Weathervane - Eagle 22"	\$ 126.00
Weathervane - Rooster 22"	\$ 126.00
Weathervane - Horse 22"	\$ 126.00
Extra Large Weathervane - Rooster	\$ 378.00
Extra Large Weathervane - Horse	\$ 378.00
Cupola 18" Square Poly	\$ 226.00
Cupola 24" Concave Roof W/ Copper Top	\$ 761.00





Vinyl Doors

36" Vinyl Entrance Door	\$289.00
56"x6' Vinyl Double Doors	\$357.00
60"x6' Vinyl Double Doors	\$357.00
72"x6' Vinyl Double Doors	\$378.00



Painted Doors

36" Painted Single Door	\$252.00
56"x6' Painted Double Doors	\$289.00
60"x6' Painted Double Doors	\$294.00
72"x6' Painted Double Doors	\$315.00



Duratemp Elite w/ Transom

Duratemp Single 36" Opening w/ Transom Window	\$280.00
Duratemp Elite Double Doors w/ Transom Window	\$475.00
Upgrade STD Door To DET w/ Transom	\$175.00



Credits

Window - 1 STD Window	\$ (50.00)
Doors	\$100 Under Retail
Loft - 4' STD Loft In 10' Pro	\$ (50.00)



French & Sliding Doors

72" Full View Door	\$1,150.00
72" 9-Lite French Door	\$1,087.00
6' Sliding Patio Door	\$1,202.00



Pre-Hung Doors

32" Pre-Hung Door w/ 9 Lite	\$467.00
36" Pre-Hung Door w/ 9 Lite	\$488.00
36" Solid Pre-Hung Door	\$452.00
36" Full View Pre-Hung Door	\$625.00



Trac Rite Metal Roll Up Doors

5'x6'4" Roll Up	\$ 683.00
6'x6'4" Roll Up	\$ 735.00
7'x7' Roll Up	\$ 798.00
8'x7' Roll Up	\$ 830.00
9'x7' Roll Up	\$ 851.00



Sectional Doors

8x7 Raised Panel Sectional Door	\$ 935.00
9x7 Raised Panel Sectional Door	\$1,000.00
8x7 Carriage House Door w/ Hardware & Glass	\$1,150.00
9x7 Carriage House Door w/ Hardware & Glass	\$1,229.00
Add Glass To Door	\$ 189.00
Electric Opener w/ Remote (Sectional Doors Only)	\$ 620.00
Outside Lock On Overhead Door	\$ 76.00



Ramps (Door Width x 3' Long)

Up To 6' Wide	\$147.00
3' x 84" Ramp - 2x6 Decking	\$163.00
3' x 96" Ramp - 2x6 Decking	\$179.00
3' x 108" Ramp - 2x6 Decking	\$194.00



Standard Vinyl Siding Colors

1 2



White



Antique Parchment



Natural Linen



Platinum Gray



Cape Cod Gray



Sterling Gray



Coastal Sage



Juniper Ridge



Mystic Blue



Adobe Cream



Maple



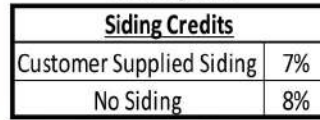
Monterey Sand



Vintage Wicker



Tuscan Clay



Custom Siding Options

Siding Credits	
Customer Supplied Siding	7%
No Siding	8%

+4% Of Base Price

Premium Vinyl Siding Colors

+4% Of Base Price



Harbor Blue



Canyon Drift



Mountain Fern



Ageless Slate



Charcoal Smoke



Storm



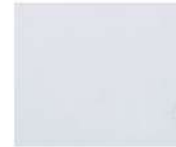
Custom Match Siding

We can custom match any siding to match your home. We will need the brand name & color to get pricing.

Please note that due to the nature of varying screen resolutions / printer distortion colors may appear slightly different to the discerning eye -

Aluminum Trim

3 4



White



Natural Linen



Maple



Adobe Cream



Cape Cod Gray



Monterey Sand



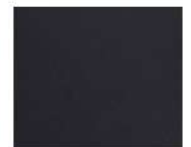
Terratone Bronze



Tuscan Clay



Musket Brown



Black



Pacific Blue



Harbor Blue



Green



Red



Charcoal Smoke



Vintage Wicker





Colors: Painted



Please note that due to the nature of varying screen resolutions / printer distortion colors may appear slightly different to the discerning eye

Painted Colors

- 1
- 2
- 3
- 4
- 6
- 8
- 9

Painted Pro Series
Corner Trim Options:
- Brown - Gray
- Green - Red
- White



Black



Burnished Slate



Gray



Cape Cod Gray



Kauffman Gray



Navy Blue



Wedgewood Blue



Riehl Green



Avocado



Coastal Sage



Jamestown Red



Dark Brown



Canyon Drift



Clay



Stoltzfus Almond



Monterey Sand



Cream



Navajo White



White



Custom Paint Match

Custom Match Paint Color \$125

Custom Options

- 1 Siding
- 2 Corner Trim
- 3 Door Trim
- 4 Roof Line Trim
- 5 Shingles/ Metal Roof
- 6 Window Trim*
- 7 Shutters*
- 8 End Vents*
- 9 Door Color (3rd Color)*

*Windows, Shutters, End Vents & 3rd Color Optional



Deluxe Buildings Come Standard With Upgraded MiraTEC Trim, Overhang, Architectural Shingles, End Vents, 3rd Color For Door & Upgraded Duratemp Elite Doors w/ Transom Windows - Add 10% To Base Price





Colors: Roof & Shutters



Please note that due to the nature of varying screen resolutions / printer distortion colors may appear slightly different to the discerning eye

Shingles 5



Weatherwood	Dual Black	Dual Brown	Charcoal Grey								
Dual Grey	Driftwood	Harvard Slate*	Earthtone Cedar								
			<table border="1"> <thead> <tr> <th colspan="2">Shingle Options</th> </tr> </thead> <tbody> <tr> <td>Customer Supplied Shingles</td> <td>\$ (0.75)</td> </tr> <tr> <td>No Shingles</td> <td>\$ (1.00)</td> </tr> <tr> <td>Architectural Shingles</td> <td>\$0.60 / sq. ft.</td> </tr> </tbody> </table>	Shingle Options		Customer Supplied Shingles	\$ (0.75)	No Shingles	\$ (1.00)	Architectural Shingles	\$0.60 / sq. ft.
Shingle Options											
Customer Supplied Shingles	\$ (0.75)										
No Shingles	\$ (1.00)										
Architectural Shingles	\$0.60 / sq. ft.										
Vintage Green	Aged Redwood*	National Blue									

Shutters & Flower Box Color Choices

7

	White
	Blue
	Green
	Dark Brown
	Gray
	Cream
	Clay
	Burgandy
	Brick Red
	Black
	Almond

Roof Options	
Steel Roof (Sq. Ft.)	\$ 2.60
Steel Roof - Copper	\$ 3.00
Steel Roof On Dormer or Hip Barn	\$ 300.00
Full Length Ridge Light (Ft.)	\$ 17.00

Metal Roof 5

*Pro Cottage Comes Standard With Choice Of: Forest Green / Charcoal Gray / Brown / Rustic Red \$50 Upcharge For Other Colors

Forest Green	Arctic White	Charcoal Gray	Gallery Blue	Lite Stone
Black	Ash Gray	Hunter Green	Brown	Tan
Taupe	Rustic Red	Ocean Blue	Pewter Gray	Burnished Slate
Galvalume	Copper Metallic	Crimson Red	Alamo White	Burgundy





Site Prep & Delivery



All of our buildings are delivered fully built and ready to use. We have specialized trucks and trailers equipped with a Mule Delivery System that allows us to maneuver the building to the shed pad with minimal impact on your lawn. The buildings can be placed directly on the grass but it is recommended to prep your site with 4"-6" of crushed stone to create a solid level base with good drainage.

- Site Must Be Solid & Level

- 4" - 6" Of Unwashed Crushed Stone Recommended
Or Concrete Pad

- Clear Path With Minimum Of 1' On Each Side To Site

- Delivery Mule Can Go Anywhere A Truck / SUV Can Drive

Visit www.CedarRockBarns.com/Site-Prep for more info and delivery videos





Rent To Own



We offer a rent to own program with various term options such as 24, 36, 48 and 60 months. This program allows you to have the shed while you make payments on it, giving you the flexibility to pay at your own pace.

Some benefits of our rental option are:

Everyone Is Approved – Must Be 18 Or Older*

NO CREDIT CHECK – Bankruptcy, evictions, missed payments, poor credit is okay.

Temporary Storage Solution – RTO is a month to month agreement, if you do not want or need your storage building at any point in time just call for pickup and we will come pick the building up and your rental agreement will be over with no additional fees / penalties.

Early Purchase Option – Save money by purchasing your storage building before your rental agreement is complete by taking advantage of our Early Purchase Option (EPO)

EPO Applies A Percentage Of The Monthly Payment Towards The Cash Price Of The Building:

24 Month = 70% Of Payment Goes Towards Cash Price

36 Month = 60% Of Payment Goes Towards Cash Price

48 Month = 50% Of Payment Goes Towards Cash Price

60 Month = 45% Of Payment Goes Towards Cash Price

Gain Ownership – Once your last rental payment is made you will owe your building free and clear! You heard that right, **YOU WILL OWN THE BUILDING!**



Order Now & Pay Later

We understand that purchasing a shed can be a big investment, which is why we offer a 90 days same as cash option for all our sheds. This allows you to pay for your shed over a 90 day period without incurring any additional charges such as interest. And if for any reason you go over the 90 days, you will automatically be enrolled in our standard rent to own agreement. This means that you can continue to make payments on the shed until it is fully paid off.

Benefits Include:

Flexibility To Pay: The 90 day clock starts the day the building is delivered. This gives your almost 3 months to pay for your building, giving you the flexibility to pay at your own pace and budget.

No Interest or finance charges: Pay the building off in 90 Days & you won't have to worry about any additional charges such as interest.

How Much Is Needed To Get Started?

1st Month + 1 Month Security Deposit

Your next payment will be due a month after delivery

Select From Current Inventory Or Custom Build

Our Rent To Own option is available on all of our in stock buildings or on a new / custom built to order unit as long as it is under \$20,000



Return The Building Any Time With No Further Obligation

Should life throw you a curve ball or you simply don't need the building, you can return your building at anytime at no further cost or obligation. Compare this to financing with a bank where you are forced to continue payments or experience foreclosure

Save Money & Save A Trip Across Town

Most mini storage units cost more every month than having a new building right in your backyard. Plus, why drive all the way across town to store the important things in your life, when you could have a much larger storage shed steps away from your house? More peace & less money....



**This advertised transaction is a rental-purchase agreement (also referred to as a RTO agreement). You will not own or obtain equity in the merchandise until the total amount necessary to acquire ownership is paid in full or you exercise your early purchase option. Ownership is optional. Delivery fees may apply. "No Credit Needed" does not mean or imply that no inquiry will be made of credit history or creditworthiness. We may check the past transactional history, but no established FICO score or credit history is necessary. Advertised rental rates and terms are for new merchandise at participating locations. Prices not valid outside the State Of Michigan, Some Exclusions May Apply.



Frequently Asked Questions



Are all buildings fully assembled ?

Yes, your building will be delivered fully assembled and ready to use!

How much do I need to order?

Purchasing: 25% down & remaining balance at delivery

Rent To Own: First month + Security Deposit



Can I Finance My New Building?

Of course! We offer financing as well as rent to own on all of our buildings. We work with select lending partners & rental companies to bring easy and affordable payment options for all of our customers.

I'm ready to order, whats the next step?

You can place your new order in person at one of our sales locations, over the phone or online at www.CedarRockBarns.com

Do I need a permit for my building?

That varies by town and municipality. Check with your local code office to see what the requirements are for your location. They will provide you with an application for a permit if needed and let you know the process you need to take. If you have any questions about the size and details of your structure, please contact us and we will be happy to help.

What is the snow load?

All of our buildings are built with a minimum snow load of 40 lbs. / sq. ft. If your location requires a higher snow load contact us & we can add in rafters & bracing to accommodate.

Can I get the building without the floor?

In order to deliver our buildings fully built we need to have the floor installed. We do offer on site building withouth a floor for a 30% surcharge

What are the advantages of a prefab building vs. DIY Kits & On Site Builds?

Prefab structures are superior in quality and more cost effective to build for a number of reasons. They are manufactured in our facilities, which means there are no delays due to weather. Plus, our streamlined construction process allows us to deliver high quality bildings fast and efficient.

What kind of foundation do I need for my new building?

For the longevity and safety of your storage building, you must provide a hard, level surface for your buildings foundation. We recommend a **4" – 6" thick crushed stone base , leveled and tamped Or Concrete Slab**. Please view page 35 for more informatoin on site prep.

How long will it take to get my new building?

Timeframe varies on location, time of year, our workload and they type of building that you are purchasing. We try to keep new buildings around 3 - 4 weeks and in stock bildings to about a week or so. We will provide an approximate time frame for delivery at the time of your order and deposit. Give us a call any time to ask what the current lead times are.

Can you deliver down a large hill?

Our mule delivery system should be able to deliver your new building anywhere a Truck or SUV can drive.

Do you build on site?

Yes! Our on site crew can build in difficult to reach locations. There is a 30% surcharge for building w/ no floor & 35% with the floor

In A Rush?

We have a large selection of in stock buildings available on our sales lots that are ready to go. Visit us online to view our full selection.

Scan Here To View
Current Inventory



Facebook.com/CedarRockBarns

www.CedarRockBarns.com



YouTube.com/CedarRockBarns





How To Order & Warranty



How To Order: Building & Delivery Process

Step 1: Choose Your Building Style / Size (Pages 2-25)

Step 3: Choose Your Colors (Pages 32-34)

Step 2: Add Any Additional Options (Optional) (Pages 31-32)

Step 4: Place Your Order In Person, By Phone or Online



1) Factory Receives Order



2) Amish Assemble The Building



3) Building Is Loaded On Delivery Truck



4) Delivery Truck Arrives At Your Home



5) Hydraulic Trailer Unloads Building



6) "Mule" Shed Mover Is Unloaded



7) "Mule" Lifts Building



8) Tight Turns Possible



9) Low / No Impact On Grass



10) Backyard Delivery Possible



11) "Mule" Sets Building



12) Building Is Ready To Use!

90 Days Money Back & 10 Year Warranty

We're positive you'll be satisfied with your new building, which is why we offer a 90 day money back guarantee on all of our standard sized buildings. If for any reason you don't love your new building, just let us know and we'll come pick it up and give you your money back!

- This offer applies to our current Shed Models only (not discontinued or discounted buildings).
- Delivered In Zone 1 delivery zone (Standard Sized Buildings Only)
- Does not apply to Rent-to-Own sales (Cash, Check, or Credit Card only).
- Does not apply to heavily customized builds & Oversized Buildings
- Building cannot be modified after it has been delivered to the customer.
- The 90 Day period begins once your shed is delivered.



10 Year Limited Manufacturer Warranty

- Our 10 year limited manufacturer warranty covers your structure from manufacturer's defects that are not caused by normal wear and tear
- Labor and materials on manufacturer's defects are covered for one year from manufactured date
- Materials are prorated to extent of warranty
- Any issues arising due to improper site conditions and site access conditions are not covered by this warranty
- Any issues arising as a result of heating your structure, or if your ventilation is blocked or restricted due to lack of proper maintenance, are not covered under our warranty
- Our warranty does not cover rodent or pest activity in, on or around our structures at any time
- This warranty is not transferrable





Quick Pick Buildings & 3D Custom Designer



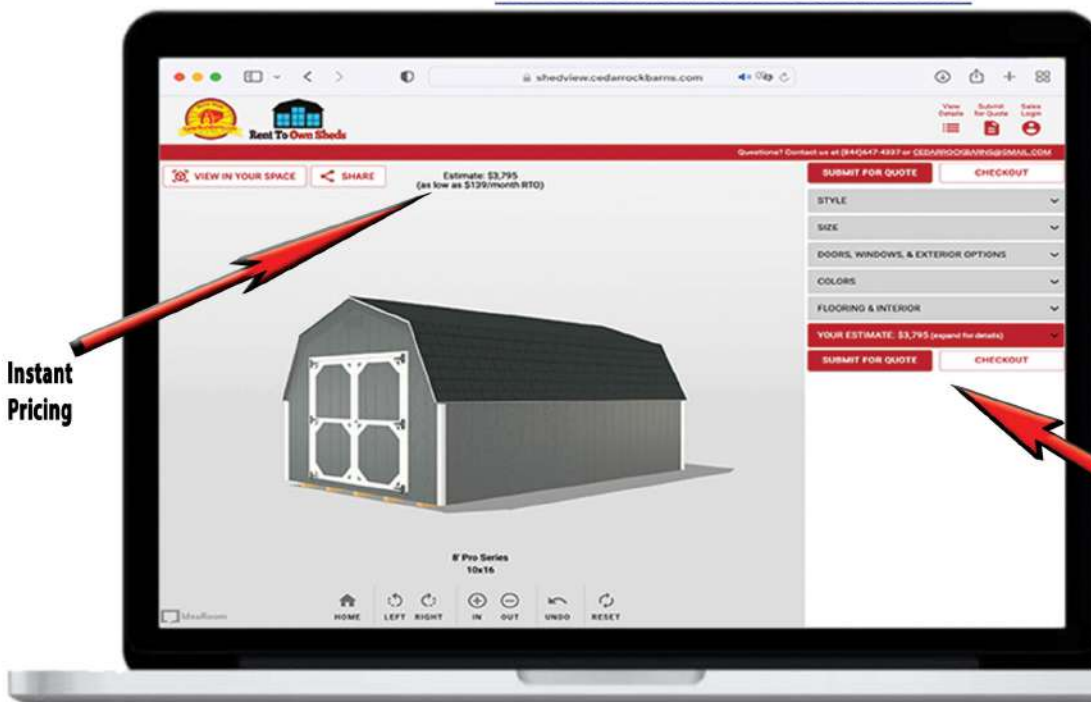
How To Use Our Quick Pick "QP" Numbers

Our in stock buildings will have a Quick Pick "QP" number on the sales tag as well as example buildings in our catalog. You can enter that QP number in the search bar of our website to easily locate and order that specific building.

If you find a Quick Pick building that you are interested in but want to make some changes (size, color, options) to it please feel free to contact us and we would be happy to help

How To Use Our 3D Shed Designer

www.Shedview.CedarRockBarns.com



Instant Pricing

- Select Building Style
- Select Size
- Add Additional Options
- Select Colors
- Interior Options
- Get Pricing Breakdown

"Submit for quote" - This will save your 3D design & send it to your email
Or
"Checkout" - You can pay now or after a salesperson reaches out to confirm your order.

Mobile Version Available
Design Anywhere!



Customize
Style / Size / Colors



Real Life Preview
Use Camera To View In Yard



It's A Work Of Art!





Contact Us / Delivery / Shop Online



Come Visit Us! Buildings Are Open For Viewing 24 / 7

Cedar Springs

11975 Northland Dr
Cedar Springs, MI 49319
PH: 844-647-4337 ext 1
Cell: 616-799-7713

Ionia

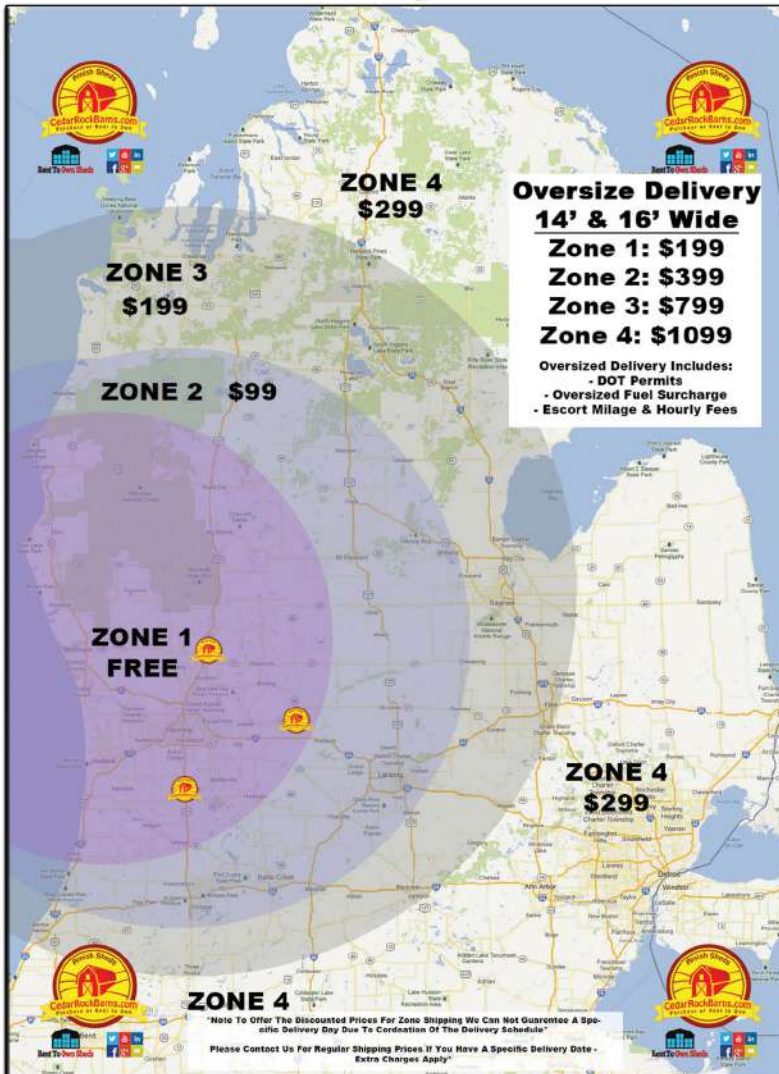
3520 S State Road
Ionia, MI 48846
PH: 844-647-4337 ext 3
Cell: 616-799-1152

Wayland

3555 12th Street
Wayland, MI 49348
PH: 844-647-4337 ext 2
Cell: 616-799-3862



Delivery Zones



Shop Online

www.CedarRockBarns.com

- View Current Inventory
- Watch Product Videos
- Rental Payment Calculator
- Customer Photos & Reviews
- 3D Shed Builder w/ Instant Pricing

