

Posey® Bed 8080

User Manual

* Used only with Elbur PB526II Posey or
PB528 Posey hospital bed from Elbur Vertriebs GmbH.
(Hospital bed, canopy frame and mattress sold separately.)

Special Home Care
Instructions
on Page 33



PB528 Posey Shown

⚠ WARNING

To help reduce the risk of serious injury or death from ENTRAPMENT, suffocation or unassisted bed exit, read and follow these instructions. SAVE THIS MANUAL FOR FUTURE REFERENCE.

Rx ONLY

Posey Products, LLC • 5635 Peck Road, Arcadia, CA 91006-0020 USA
Phone: 1.800.447.6739 • Fax: 1.800.767.3933 • www.posey.com

 **Posey®**

Table of Contents

Topic	See Page
Definitions	3
Purpose of the Device (Indications for Use)	3
<i>Approved Care Plan</i>	3
<i>Clinical Conditions</i>	3
All-In-One Canopy and Bed	4
Description of the Device	4
When the Device Should Not Be Used (Contraindications)	4
Benefits and Risks	4-6
<i>Benefits</i>	4
<i>Risks</i>	4
<i>A Special Note About Entrapment Risks</i>	5
<i>Possible Adverse Reactions</i>	5
<i>Adverse Events</i>	5
<i>Reassessment</i>	6
<i>Alternatives to Restraint Use</i>	6
<i>A Note About Falls</i>	6
A Guide to the Posey Bed 8080 Components	7
Duties of All Caregivers (Procedure Associated with the Device) ...	8
<i>Before Use of the Posey Bed</i>	8
<i>During Use of the Posey Bed</i>	8
<i>Before Stopping Use of the Posey Bed</i>	8
Warnings and Precautions	9-11
<i>Entrapment Risk (For Certain At-Risk Patients) - Canopy Gaps</i>	9
<i>At Risk Patients Include</i>	9
<i>To Help Reduce the Risk of Entrapment</i>	9
<i>Risk of Suffocation or Choking</i>	9
<i>Risk of Fall or Unassisted Bed Exit</i>	10
<i>Check the Canopy</i>	10
<i>Check the Zippers</i>	10
<i>Precautions During Transfers and Patient Care</i>	10-11
<i>Agitated or Aggressive Patients</i>	11
Importance of Adhering to a Care Regimen	11
<i>Importance of Patient Monitoring</i>	11
Operating Information	12-14
<i>Set Up and Use Instructions</i>	12
<i>Bed Assembly</i>	12
<i>Alterations to the Posey Bed</i>	12
<i>Checklist Before First Use</i>	12
<i>Caregiver Training</i>	13
<i>Bed Location</i>	13
<i>Transfer to the Posey Bed</i>	13-14
<i>Access for Patient Care</i>	14
<i>Transfer from the Posey Bed</i>	14
<i>Emergency Patient Release</i>	14
“Quick-Check 10” (Before Leaving Patient Unattended)	15
Components of the Posey Bed 8080	16-20
<i>Access Panels</i>	16
<i>Bed Control</i>	16
<i>Bed Control Operation</i>	16
<i>Canopy Bed Strap</i>	17

Topic	See Page
<i>Locking Casters</i>	17
<i>Mattress Compartment</i>	17
<i>Mattress Accessories</i>	18
<i>Perimeter Guards</i>	18
<i>Transport Handles</i>	18
<i>Quick-Release Buckles</i>	18
<i>Tube and Drainage Ports</i>	19
<i>Zippers and Pull-Tabs</i>	19-20
<i>CPR Release Levers</i>	20
<i>Battery Back-up</i>	20
Cleaning Instructions	21-22
<i>Foam Canopy Pads and Posey Bed Mattress</i>	20
<i>For Quick Cleaning</i>	20
<i>Preparation for Washing</i>	20
<i>Hook and Loop Cleaning</i>	20
<i>Remove the Canopy for Replacement or Washing</i>	21
<i>To Reassemble the “U” Side Panel</i>	21
<i>Machine Washing the Canopy</i>	22
<i>Drying</i>	22
<i>Cleaning the Bed Frame</i>	22
Installing the Canopy After Washing	23
Maintenance	24
<i>Canopy and Frame</i>	24
<i>Bed Frame Undercarriage</i>	24
<i>Monthly Visual Inspection</i>	24
Storage and Handling	24
Useful Life of the Posey Bed Canopy	24
Instructions to Safely Dispose of the Device	24
Use of Posey Accessories with the Posey Bed 8080	25
Troubleshooting Information and FAQ’s	26-28
<i>Canopy</i>	26-27
<i>Frame</i>	27
<i>General FAQ’s</i>	28
<i>Bed Motor and Control Box</i>	28
Additional Information	28
<i>Disease and Self Care Information</i>	28
<i>Travel or International Use</i>	28
Technical Specification/Dimensions	29
Bed Electrical Specifications	29
Replacement Parts	30
Posey Limited Warranty	31
Technical Service from Posey	32
A Special Note About Home Use	33
<i>The Posey Bed May Be Used in a Home Care Setting Only</i>	33
<i>Doctor’s Orders</i>	33
<i>A Note About Care Plan</i>	33
<i>A Special Note About Entrapment Risks</i>	33
<i>In a Patient Emergency</i>	33
<i>Importance of Patient Monitoring</i>	33
Notes	34-35

Definitions

The symbols below signal a **WARNING** or **CAUTION**:

⚠ WARNING A “Warning” alerts you to a safety hazard or unsafe practice, which, if not avoided, could result in serious injury or death.

⚠ CAUTION A “Caution” alerts you to a hazard, which, if not avoided, may result in minor or moderate injury to you or the patient, or damage to the Posey Bed.

The following words have special meaning when they are used in this Manual:

“**BIOHAZARDOUS**” means matter that is contaminated with human blood; tissues; certain body fluids; recombinant DNA; or pathogens. Check with the patient’s physician if you have any questions about this hazard.

“**CARE PLAN**” means the patient’s Individualized Care Plan (or ICP) as written by the MEDICAL TEAM (see below).

“**ENTRAPMENT**” means an event in which a patient is caught, trapped, or entangled in a confined space. This can result in serious injury or death from suffocation, compression, or lack of proper blood flow.

“**MEDICAL TEAM**” means the Interdisciplinary Healthcare Team who writes the CARE PLAN and supervises patient care. The team may include, among others, Physicians, Nursing, Occupational Therapy, Physical Therapy, and Social Services.

Purpose of the Device (Indications for Use)

The Posey Bed 8080 is a hospital bed, canopy, and mattress system designed to help provide a safe, controlled environment for patients at extreme risk of injury from a fall or unassisted bed exit. The Posey Bed is a passive alternative to direct restraints such as belts, vests, or jackets for adult and pediatric patients at least 117 centimeters tall, weighing between 21 and 136 kilograms. **However, it is still a restraint, and must be prescribed by a licensed physician (Rx ONLY) or the authority legally allowed to prescribe restricted medical products, and must only be used under the direct supervision and authority of the MEDICAL TEAM.**

Approved Care Plan

Each patient must have an approved CARE PLAN prior to using the Posey Bed. The Posey Bed must be used in accordance with the patient care standards, and policies of a legally registered medical facility and in compliance with all applicable local, state, federal and European Union regulations.

Patients who may benefit from the use of the Posey Bed include patients with:

- Severe osteoporosis.
- Severe risk of fractures due to clinical conditions.
- Insufficient muscle, fat, and subcutaneous tissue to absorb the impact of a fall.
- Current use of anticoagulants.
- A history of severe trauma in a prior fall.

Clinical Conditions

Certain at-risk patients may also benefit from the use of the Posey Bed. This includes patients with behavioral, physical, mental or other symptoms identified by a physician or the MEDICAL TEAM, such as:

- Musculoskeletal problems that cause an unsteady gait or impair strength or biomechanics.
- Altered awareness due to medication or neural illnesses that impair alertness and balance, and/or dementing illnesses.¹
- Visual or peripheral neuropathies that impair positional sense.

¹ Dementia patients are at increased risk of falls. This may be due to impaired judgment, altered gait, and/or sensory deficits. Ellelt, Anne. “Keeping Dementia Residents Safe” Assisted Living Consult, Sept/Oct 2007, page 20.

All-In-One Canopy and Bed

- The Posey Bed 8080 canopy is designed to only be used on a modified Elbur model PB526II Posey or PB528 Posey and should not be used on any other bed platform.

Description of the Device

- **Fully Automatic Low Hospital Bed manufactured and supplied by Elbur Vertriebs GmbH. (Elbur model PB528 Posey).** Mattress level can be lowered to 53 centimeters for ease of transfer and when the patient is unattended, and can be raised to 95 centimeters to help reduce the risk of back strain or injury to the caregiver during patient care.
- **15 centimeter Enclosed Mattress Compartment.** Helps avoid the risk of a patient being trapped under the mattress.
- **Nylon Canopy System.** A two cubic meter rectangular green canopy surrounds the bed. The nylon material is light and skin friendly. The canopy has four (4) access panels for easy access to the patient, and multiple ports for intravenous lines, the Nurse Call Button, and drainage lines. Zippers secure with Quick-Release Buckles for patient security.
- **Perimeter Guards.** A soft side rail on each side of the bed helps reduce the risk of patient fall when a “U” side panel is open during patient care.

When the Device Should Not Be Used (Contraindications)

The Posey Bed is not intended for use with:

- Patients who weigh less than 21 kilograms, or are shorter than 117 centimeters. These patients are at risk of serious injury or death, and the Posey Bed 8080 has not been tested for use by such patients.
- Patients who weigh more than 136 kilograms. This is the maximum load capacity of the bed.
- Patients diagnosed with any condition that may cause violent or self-destructive behaviors. These could result in self-injury and/or damage to the Posey Bed. Violent flailing of the body from side to side could cause the Posey Bed to tip over or move to a position where the patient is injured by contact with an object in the room.
- Patients with an excessive Pica eating disorder. This refers to a person who may attempt to eat the canopy or padding of the Posey Bed. Patients who suffer from this disorder include adults, and it is the most common eating disorder among children who are developmentally disabled.
- Patients who are, or who become, claustrophobic while in the Posey Bed.

Due to the nature of some patients' diagnoses, activity level, or uncontrolled movements, the Posey Bed is not suitable for every patient.

Benefits and Risks

Benefits

The Posey Bed was designed to help provide these benefits:

- A controlled patient environment,
- Calming effect for some patients,
- Reduce the risk of unassisted bed exit,
- Reduce the risk of patient falls,
- Avoid the risk of a patient being trapped under a mattress, and
- Eliminate the need for side rails when the patient is unattended. This avoids the risk of the patient being trapped in side rails, or between the mattress and side rails.

Risks

Improper use of the Posey Bed may lead to serious injury or death. Patient monitoring should be established by hospital protocol and the patient's CARE PLAN. See the Warnings and Precautions section (Pages 9-11) to help reduce or avoid these risks:

- ENTRAPMENT,
- Suffocation,
- Choking, and
- Patient Falls.

A Special Note About Entrapment Risks

All hospital beds pose safety and ENTRAPMENT risks. The U.S. Food and Drug Administration (FDA) received approximately 691 ENTRAPMENT reports in the U.S. for standard hospital beds over a period of 21 years from January 1, 1985, to January 1, 2006.² The Hospital Bed Safety Workgroup (“HBSW”) was formed to address this risk and issued a report describing seven ENTRAPMENT zones. The HBSW report can be found at <http://www.fda.gov/cdrh/beds/modguide.html>. The Posey Bed 8080 was designed to eliminate all seven ENTRAPMENT zones described in the report when the head of the bed is DOWN and the mattress is FLAT.



The patented mattress compartment of the Posey Bed 8080 helps avoid the risk of a patient being trapped under the mattress. The Posey Bed was designed without side rails to help avoid the risk of the patient being trapped in the side rails, or between the mattress and the side rails.

However, special care must be taken with patients who try to escape or crawl into the gap or pocket created between the mattress and the canopy when the head of the bed is raised. Such patients are at serious risk of ENTRAPMENT.

ENTRAPMENT risks, and how to help reduce them, are discussed in more detail in the Warnings and Precautions section on Page 9.

Possible Adverse Reactions

Although it is a passive restraint, use of the Posey Bed could cause emotional, psychological, or physical problems in certain patients. These include:

- A significant change in mental status, such as claustrophobia or depression.
- Sudden mood changes which lead to a change in medical condition.
- An increase in aggression or self-destructive behaviors.

Get help from the physician or the MEDICAL TEAM if symptoms of any of these appear and DO NOT improve as the patient becomes used to the Posey Bed. You may need to find a different method of treatment.

Adverse Events

Any injury to a patient or caregiver that MAY relate to use of the Posey Bed, as well as any product malfunction, should be reported to Posey as soon as possible, but no later than five business days after the event. Also, we want to hear from you about any activity or type of product use that you feel may cause a risk of injury or product malfunction. Please provide details about any injury, malfunction or other concern.

Known and possible adverse events involving Enclosed Bed Systems, include, but are not limited to, one or more of the following, whether or not there is injury to a patient or caregiver:

- Risk of ENTRAPMENT from patient condition, bed position, or activity level, which may lead to suffocation, compression, or lack of proper blood flow.
- Fall due to a broken or damaged zipper or torn canopy, allowing bed exit.
- Patient able to open panel or port zippers.
- Fall during patient care while panel is open.
- Unexpected movement of bed when casters are locked.
- Impeded flow of tube(s) or line(s).
- Skin irritation from contact with the bed fabric, or from excessive rubbing behavior.
- Breathing problems due to ENTRAPMENT or contact with canopy material or bedding.

Instructions, WARNINGS and CAUTIONS found in this manual and all labels on the Posey Bed, are intended to help avoid or reduce the possibility of these and other adverse events from occurring.

Be sure to report any safety or performance issue, product malfunction, or possible risk of injury or malfunction involving the Posey Bed. Call your local Authorized Posey Bed Dealer, Email us at TechnicalServices@posey.com, or call Posey Technical Service at +1.626.443.3143 and press “3”, between the hours of 15:00 to 22:30 Greenwich Mean Time (GMT).

²Guidance for Industry and FDA Staff – Hospital Bed System Dimensional and Assessment Guidance to Reduce ENTRAPMENT, March 10, 2006.

Reassessment

CAUTION Reassess the need for use of the Posey Bed as the patient's mental or physical health or status changes. Use the Posey Bed only if there is no less restrictive alternative. **ALWAYS** use the least restrictive device available for the shortest time while you seek a less restrictive alternative.

Alternatives To Restraint Use

Review the patient's mental and physical status often to ensure that the benefits of using the Posey Bed as a restraint outweigh the risks. Safe use requires that:

- You define and remove, if possible, the cause of the symptoms that require a restraint. This may include catering to individual needs and routines; increased rehabilitation; restorative nursing; modifying the environment; or increased supervision.
- You tailor interventions to the individual needs of the patient after weighing factors such as the patient's condition; behaviors; history; and environment.

When possible, enlist the aid of family members. Depending on the patient's condition, alternatives to restraint may include one or more of these:

- A bedside companion,
- Fall alarms,
- Floor cushions,
- Lowering the volume on the TV,
- Adjusting window shades or dimming lights,
- Soft music, or
- Use of a Posey Activity Apron.

As with all restraints, the Posey Bed should **NEVER** be used for nursing convenience.

A Note About Falls

Most falls do not cause death or serious injury. The two most common serious injuries are hip fractures and head trauma.³ Most falls occur in Neurology and Medical units, with the highest rate in Oncology units. Fall rates may be higher in units with higher patient to nurse ratios.⁴

³ Clugston, David. "Falls by Older Adults" Advance for Nurse Practitioners, April 2007, page 62.

⁴ Hitcho, Eileen B. et al., "Characteristics and Circumstances of Falls in a Hospital Setting" JGIM, Volume 19, July 2004.

A Guide to the Posey Bed 8080 Components

1. **Enclosed Mattress Compartment.** Accommodates a fifteen centimeter mattress.
2. **Nylon Canopy.** The nylon material is light, skin friendly, and water-repellent.
3. **Two “U” Side Panels.** One panel on each side with a single zipper on each panel for easy patient access.
4. **Bed Control Holder Ring.** Holds the Bed Control.
5. **Head (5a) and Foot (5b) Access Panels.** Helps provide easy access to the head and foot of the bed with a single zipper on each panel.
6. **Quick-Release Buckles.** Clip to zipper pull-tabs for added patient security.
7. **Perimeter Guards.** Function like soft side rails for temporary use during patient care and must be unzipped when side panels are closed.
8. **Foam Canopy Pads.** Ten pads fit around the canopy frame to help reduce the risk of injury from contact with the frame.
9. **Hook and Loop Tabs.** Secure the “U” side panels to the top panel of the canopy when the side panels are open.
10. **Side Panel Tube Ports.** Two ports, one on each side at the foot of the canopy to run tubes into the patient compartment.
11. **Posey Bed Instruction Storage Pocket.** Stores all product Manuals and the “Quick-Check 10” for easy reference.
12. **Locking Casters.** To secure bed during patient transfers to and from the bed and when patient is unattended.
13. **Drainage Ports.** Two ports, one on each side of the head of the bed.
14. **CPR Release Levers.** Located on both sides of the bed to enable rapid caregiver emergency response.
15. **Battery Back-up.** Provides emergency power back-up for bed operation in the event of a power outage.



Fig. 1. Features of the Posey Bed 8080 (Hospital Bed and Mattress sold separately from Elbur)

Duties of All Caregivers (Procedure Associated with the Device)

Before Use of the Posey Bed

- The Posey Bed must be prescribed by a licensed physician or the authority legally allowed to prescribe restricted medical products.
- All caregivers must be fully trained before use of the Posey Bed. See the Caregiver Training section on Page 13.
- Make sure you are familiar with the patient's CARE PLAN and know how closely and how often to monitor the patient.
- Follow all instructions, Warnings and Cautions in this Manual and all labels on the Posey Bed.

During Use of the Posey Bed

- Use the "Quick-Check 10" list on Page 15 each time before you leave the patient's bedside.
- Monitor the patient very closely to make sure that the Posey Bed meets the patient's needs. Make sure the patient is comfortable and responds well to the Posey Bed.
- Reassess the need for use of the Posey Bed as the patient's mental or physical health or status changes. Use the Posey Bed only if there is no less restrictive alternative. **ALWAYS** use the least restrictive device available for the shortest time while you seek a less restrictive alternative.
- Remove patients who are, or who become, claustrophobic while in the Posey Bed.
- Remove the patient immediately if there is a risk of self-injury; injury to others; the bed tipping over; or if the patient tries to damage the Posey Bed.
- Review all instructions, Warnings and Cautions in this Manual and all labels on the Posey Bed weekly during the first month and at least once a month thereafter, until they become second nature to you.

Before Stopping Use of the Posey Bed

- Patient must be evaluated and monitored prior to transition to a regular or hospital bed.
- Consult the physician's orders, the CARE PLAN, the MEDICAL TEAM, or facility policy for instructions for patient transition.

Warnings and Precautions

⚠ WARNING Entrapment Risk (For Certain At-Risk Patients) – Canopy Gaps

Raising the head of the Posey Bed will create “gaps” or “pockets” between the head of the bed and the canopy. These areas pose an extreme risk of serious injury or death from ENTRAPMENT to certain at-risk patients. **NEVER** raise the head of the Posey Bed for at-risk patients unless the Posey Filler Cushions (REF 8021, Page 25) are used. **ALWAYS** monitor at-risk patients according to facility policy to make sure they DO NOT remove the Posey Filler Cushions.



At-Risk Patients Include

- A small child or frail adult who, because of mental or physical disability, cannot reposition or remove him or herself from a confined area in the bed.
- A patient who tries to burrow between the raised head of the bed and the canopy netting.
- Any other patient identified by the physician, the CARE PLAN, or MEDICAL TEAM to be at risk of ENTRAPMENT in the gaps created when the head of the bed is UP.
- Patients who exhibit escape behaviors.

To Help Reduce The Risk Of Entrapment

Keep the Head of the Bed DOWN. Lower the head of the bed until the mattress is FLAT when an at-risk patient is unattended. If you need to elevate the patient’s head or torso (for example, for watching TV or if required by the physician’s orders or the CARE PLAN), Posey recommends that you keep the mattress FLAT and use the Posey Torso Cushion (REF 8025, Page 25), to position the patient.

The Posey Filler Cushions. If you must leave the head of the bed UP while an at-risk patient is unattended, use the Posey Filler Cushions (REF 8021, Page 25), to help reduce the risk of ENTRAPMENT.

Extra Monitoring. Monitor per facility policy or at least hourly to ensure that the Posey Filler Cushions stay in place and that an at-risk patient cannot crawl under or around the Posey Filler Cushions.

Consult the physician or the MEDICAL TEAM to find an alternative method of treatment for any at-risk patient who is able to remove or burrow under or around the Posey Filler Cushions. Alternative methods to help reduce the risk of ENTRAPMENT include lowering the head of the bed until the mattress is FLAT, removing the Posey Filler Cushions, and using only a Posey Torso Cushion to support the patient.

Stretching of Canopy Material. The canopy may stretch over time during normal use, or due to patients who engage in escape behaviors. This could result in pocket areas on the inside of the canopy. Regular washing and drying should help reduce this condition. Replace any canopy that has excessive wear or damage (Part Number 8080T-ENG).



⚠ WARNING Risk of Suffocation or Choking

NEVER put a mattress inside the patient area. Doing so may allow the patient to crawl under the mattress and suffocate. The mattress must be fully zippered into the mattress compartment at all times.

To Help Reduce the Risk of Suffocation or Choking:

- Keep the Posey Bed free of clutter and foreign objects that may pose a risk of self-injury or suffocation.
- Tubes or monitoring lines and the Nurse Call Button may be placed inside the Posey Bed only if authorized by the CARE PLAN.
- **NEVER** hang, suspend, or attach toys or other items to the netting or canopy.

⚠ WARNING Risk of Fall or Unassisted Bed Exit

NEVER use the Posey Bed if there is damage to the canopy, access panels or zippers. A failure to heed this warning may result in patient escape or unassisted bed exit, which may lead to serious injury or death from a fall. **ALWAYS** check the canopy and the zippers before leaving the patient unattended to help reduce the risk of a fall or unassisted bed exit.

Check the Canopy

Make sure there are no tears, holes, or abrasions in the nylon panels or netting, and that the canopy and frame are secure and attached properly to the hospital bed.

Check the Zippers

Inspect zipper coils for any kinks or misalignment (See Fig. 2). Test that all zippers open easily and close securely and there are no gaps or openings when pressure is applied along the entire length of each zipper. **ALWAYS** use the zipper pull-tabs when opening or closing the zippers (See Fig. 8, Page 16).

NEVER try to rip a panel open (See Fig. 2A), as this may damage the access panel or the zipper slider by bending it open (See Fig. 3A). If a zipper slider is damaged or if zipper teeth are broken or missing, the zipper may not close securely and the patient will be able to open the panel and fall.

- **NEVER** use the bed if a zipper slider is bent open or damaged (See Fig. 3A), as this may prevent the zipper from closing securely.
- **NEVER** use the bed if a zipper slider is damaged or the pull-tab is missing or broken.
- **NEVER** leave the patient's bedside until all access panel zippers are securely closed. Test the entire length of each zipper by pressing against the panel near the zipper to make sure it is securely closed and the access panel will not open when pressure is applied (See Fig. 4). Quick-Release Buckles must be clipped to all four access panel zippers before leaving the patient unattended (See Fig. 20, Page 18).
- **NEVER** use the bed if a zipper coil is kinked, misaligned, has open gaps, or does not close securely.

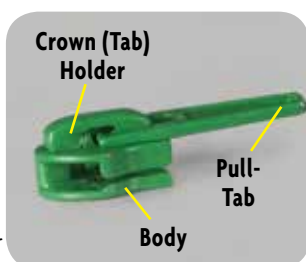


Fig. 3. Undamaged Zipper Slider

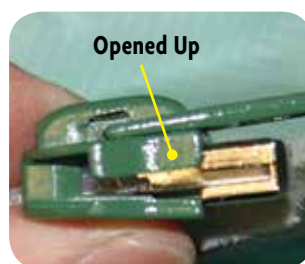


Fig. 3A. Zipper Slider Damaged from ripping the access panel open

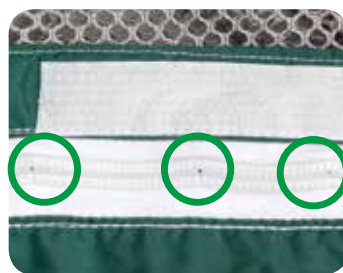


Fig. 2. Kinks in zipper



Fig. 2A. DO NOT Rip Panels Open



Fig. 4. ALWAYS test that the zipper is securely closed by pressing against the entire length of the closed zipper to make sure it will not open when pressure is applied

Remove the patient from the bed if a zipper is damaged or a panel will not close securely. Call your local Authorized Posey Bed Dealer for information about repairs or replacement of the zipper, access panel or canopy.

Precautions During Transfers and Patient Care

AVOID risk of a fall or unexpected bed movement. **Transfers** increase the risk of injury to you and the patient. Follow these steps before each transfer to reduce the risk of injury from a fall or unexpected bed movement:

- Check the area around the Posey Bed for tripping hazards.
- Engage central braking system to ensure all four casters are locked before patient transfer and when leaving patient unattended (See "Locking Casters," Page 17).
- Make sure that the bed is in a FLAT position. The Posey Bed can be raised up to 95 cm to accommodate a patient transfer.
- **NEVER** use a patient lifter for transfer unless it has been tested to make sure there is enough clearance under the canopy frame to do so safely. The clearance of the opening side access panel is 97 cm H x 117 cm W (at bottom) (See Fig. 5, Page 13).

Access Panels. A fall may occur while one or more access panels are open during patient care. Make sure the patient is in a safe position on the mattress before you open an access panel. To help reduce the risk:

- **ALWAYS** secure the Perimeter Guard of the open “U” side panel during patient care (See “Perimeter Guards,” Page 18). Monitor the patient closely and **NEVER** leave a patient unattended while the Perimeter Guard is in use or the canopy is open.
- Before opening the access panel at the head of the bed, make sure the mattress is FLAT and the patient is at a safe distance from the panel. Serious injury may occur due to the added distance if the patient falls when the head of the bed is raised.
- Position your body to block the area of the open “U” panel to help reduce the risk of a fall while you provide care.

⚠ WARNING Agitated or Aggressive Patients

NEVER leave a patient in the Posey Bed if there is a risk of self-injury; injury to others; the bed tipping over; or if the patient tries to damage the Posey Bed.

- Be aware that a sudden mood swing may cause agitated or aggressive behavior. Follow your facility’s security policy, the CARE PLAN, or the physician’s orders for such patients.
- An agitated or aggressive patient may require constant monitoring or alternative methods of restraint.
- No level of monitoring may avoid risk of serious injury to certain agitated or aggressive patients.
- Use of the Posey Bed by an agitated patient or a patient who tries to escape must be approved by the physician or the MEDICAL TEAM when tube(s) or line(s) are in use. There is a risk of serious injury or death if the patient becomes entangled, or disrupts the integrity of a tube or monitoring line. Consult the physician, the CARE PLAN, the MEDICAL TEAM, or facility policy for instructions on extra monitoring for such a patient.
- Watch for signs of claustrophobia, or a significant increase in stress or physical movement. Remove these patients from the Posey Bed IMMEDIATELY, and notify the physician. You may need to find a different method of treatment.

Importance of Adhering to a Care Regimen

⚠ WARNING Failure to comply with the physician’s order, the patient’s CARE PLAN, and all instructions, Warnings and Cautions in this Manual, and on all labels on the Posey Bed, could result in patient death or serious injury. Monitor the patient’s condition per your facility’s policy, the physician’s orders, and the CARE PLAN.

⚠ WARNING Importance of patient monitoring

NEVER leave a patient unattended without proper monitoring. Failure to monitor per your facility’s policy, the physician’s orders, or the CARE PLAN could result in serious injury or death.

On First Use:

- Monitor the patient very closely for the first four hours of use to make sure that the Posey Bed meets the patient’s needs. Make sure the patient is comfortable and responds well to the Posey Bed.
- Posey suggests in-room monitoring for the first two hours, and full time line of hearing or line of sight monitoring for the next two hours.

Daily Monitoring and Release Policy. Monitor the patient’s condition per your facility’s policy, the physician’s orders, or the CARE PLAN. Explain the use of the Nurse Call Button to the patient and the patient’s family.

Follow the CARE PLAN for daily patient release. Be sure to consider patient needs for:

- Nourishment,
- Range of motion,
- Walking,
- Recreation,
- Toileting, and
- Restorative Nursing.

Operating Information

Set Up and Use Instructions

For safe use and assembly, each Posey Bed includes:

- Assembly Instructions (M6263).
- This User Manual (M6264).
- “Quick-Check 10” checklist (MK1441).

For future use and quick reference, keep these in the pocket at the foot of the bed. To obtain copies of any of these, call your local Authorized Posey Bed Dealer or visit www.posey.com to download a copy.

Bed Assembly

⚠ CAUTION DO review the assembly instructions each time you assemble the bed or replace the canopy after cleaning. A failure to assemble the Posey Bed properly could result in injury to the patient.

Alterations to the Posey Bed

⚠ WARNING NEVER modify the Posey Bed for any reason.

- **NEVER** add side rails or head or footboards to the Posey Bed. Doing so will increase the risk of ENTRAPMENT or serious injury to an agitated or aggressive patient from contact with these parts.
- **NEVER** use any device, such as a Zip Tie or a padlock, to secure panel zippers. Only use the Posey Quick-Release Buckles. You must **ALWAYS** be able to access the patient quickly in an emergency.
- DO NOT add any accessory to the Posey Bed other than those recommended by Posey (See Page 25).

Checklist Before First Use

ALWAYS make sure the Posey Bed is in good working order and do a full visual inspection of the bed before first use with each patient. Check to see that:

- The bed is clean and unsoiled.
- The bed is properly assembled, with all parts in good condition.
- The canopy frame is not bent or broken.
- All zippers open easily and close securely and there are no gaps or openings when pressure is applied along the entire length of each zipper.
- The canopy metal frame is completely padded and all foam canopy pads are in place and undamaged.
- The canopy is not torn and the panels have no tears, abrasions, or broken stitches.
- The power cord (if in use) is secured to prevent a tripping hazard.

⚠ WARNING NEVER use the Posey Bed if the canopy frame is bent or broken, the canopy is torn or damaged, or the zippers DO NOT open easily and close securely. Doing so could result in serious injury or death from a fall or unassisted bed exit.

Caregiver Training

Make sure that each caregiver is fully trained in all applicable hospital policies regarding restraint use before using the Posey Bed. Review and follow all:

- User instructions in this manual,
- Warnings and Cautions in this manual, and,
- The labels on the Posey Bed.

Posey recommends that you review them weekly during the first month. Review them at least once a month thereafter, until they become second nature to you.

Bed Location

Make sure the room is large enough for the Posey Bed 8080:

- In an emergency, you must have enough room to easily access or remove the patient from the bed.
- Position the Posey Bed so the patient cannot injure themselves by hitting walls, furniture, or other equipment while inside the canopy.
- Make sure the power cord is out of the way to avoid a tripping hazard.

⚠ WARNING Smoking and High Heat

- **NEVER** allow smoking in a room where the Posey Bed is used. Although bed components are flame retardant per DIN EN 1021-1, EN 1021-2, BS 7177, and BS5438, a strict “No Smoking” policy must be enforced.
- **NEVER** expose the Posey Bed or bedding materials to open flame, smoking materials, or high heat sources. Keep baseboard heaters, space heaters, and other portable heating devices away from the bed at all times.



Transfer to the Posey Bed

Assist the patient into and out of the bed. Speak gently and assure the patient that the Posey Bed is for his or her protection. Provide music or television to help reduce boredom. DO NOT leave the patient's bedside unless you are sure that the patient is safe, comfortable, and is responding well to the Posey Bed.

⚠ CAUTION Safe transfers and patient care inside the Posey Bed involve a number of factors including patient size, medical condition, disability, and mobility. Transfers will vary for patients who are able to stand as opposed to patients who must be lifted to or from the bed. **NEVER** use a patient lifter for transfer unless it has been tested to make sure there is enough clearance under the canopy frame to do so safely. The clearance of the opening side access panel is 97 cm H x 117 cm W (at bottom) (See Fig. 5).

Be sure to follow facility policies, the CARE PLAN, and the physician's orders to meet the special needs of each patient.

1. Check the area around the bed for any tripping hazards. Make sure you have access for a safe and easy transfer.
2. Check that all casters are locked to help reduce the risk of unwanted bed movement. Press down on the brake lever to lock the casters.
3. Make sure that the bed is in a FLAT position. The Posey Bed can be raised up to 95 cm to accommodate a patient transfer.
4. Unclip the Quick-Release Buckle and unzip the “U” side panel for patient entry. Secure the panel to the top of the canopy using the Hook and Loop Tabs.
5. Now you are ready to move the patient to a safe position on the mattress. Depending on the size and weight of the patient, you may need additional persons for safe transfer.
6. Speak gently and explain that the Posey Bed is for the patient's protection.
7. If the physician's order or the patient's CARE PLAN requires IV lines, drainage tubes, monitoring lines, or a Nurse Call Button, make sure to connect them properly using the built-in access port(s).

⚠ WARNING Tube and Drainage Port use with Agitated or Aggressive Patients.



Fig. 5. Access Panel Opening Clearance

Transfer to the Posey Bed (Continued)

Use of the Posey Bed by an agitated patient or a patient who tries to escape must be approved by the physician or the MEDICAL TEAM when tube(s) or line(s) are in use. There is a risk of serious injury or death if the patient becomes entangled, or disrupts the integrity of a tube or monitoring line. Consult the physician, the CARE PLAN, the MEDICAL TEAM, or facility policy for instructions on extra monitoring for such a patient.

8. Once you are ready to close the canopy, release the “U” side panel from the top of the canopy by unhooking the Hook and Loop Tabs. Use the zipper pull-tabs to close the “U” side panel. Secure the zipper slider with the Quick-Release Buckle (See Fig. 20, Page 18). Test the entire length of each zipper by pressing against the panel near the zipper to make sure it is securely closed and access panel will not open when pressure is applied (See Fig. 4, Page 10).
9. Before leaving the patient unattended, read and follow all steps in the “Quick-Check 10” (See Page 15) and make sure the bed is in its lowest position.

Access for Patient Care

⚠ WARNING Before opening the access panel at the head of the bed, make sure the mattress is FLAT and the patient is at a safe distance from the panel. Serious injury may occur due to the added distance if the patient falls when the head of the bed is raised.

1. Check the area around the bed for any tripping hazards.
2. Check that all casters are locked to help reduce the risk of unwanted bed movement. Press down on the brake lever to lock the casters (See Figs. 16 and 17, Page 17).
3. Unclip the Quick-Release Buckle and open the “U” side panel for access. Make sure patient is in a safe position and not at risk of falling.
4. Secure the panel to the top of the canopy using the Hook and Loop Tabs.
5. **ALWAYS** secure the Perimeter Guard of the open “U” side panel in the UP position with the zippers and the Quick-Release Buckle during patient care (See Fig. 19, Page 18). Monitor the patient closely and **NEVER** leave a patient unattended while the Perimeter Guard is in use or the canopy is open (See Page 18).
6. When you are finished providing patient care and are ready to close the canopy, make sure the patient is not at risk to fall out of bed. Carefully move the patient to a safe position on the mattress.
7. Unzip and lower the Perimeter Guard.
8. Zip the access “U” side panel closed and secure with the Quick-Release Buckle, and make sure the bed is at the lowest height.
9. Before leaving the patient unattended, read and follow all steps in the “Quick-Check 10” (See Page 15).

Transfer from the Posey Bed

1. Check the area around the bed for any tripping hazards. Make sure you have access for a safe and easy transfer.
2. Make sure that the bed is in a FLAT position. The Posey Bed can be raised up to 95 cm to accommodate a patient transfer. **ALWAYS** lock all four casters (See Figs. 16 and 17, Page 17).
3. Unclip the Quick-Release Buckle and open the “U” side panel for access. Make sure patient is in a safe position and not at risk of falling.
4. Secure the panel to the top of the canopy using the Hook and Loop Tabs.
5. Assist the patient to an upright, seated position. Help the patient slide both legs to the side of the bed and assist the patient up, as necessary. Be aware that a reclined patient may have equilibrium problems, so always be ready to provide support.
6. Modify these steps, if necessary, for safe transfer of patients who must be lifted from the bed. Depending on the size and weight of the patient, you may need additional persons for safe transfer. Refer to your facility policy for safe patient transfer.

Emergency Patient Release

Release the Quick-Release Buckle and unzip the “U” side panel quickly to release the patient.

“Quick-Check 10” (before leaving patient unattended)

⚠ WARNING Make sure you are familiar with the physician’s orders and the patient’s CARE PLAN and know how closely and how often to monitor the patient.

1. **Canopy and Netting.** Make sure there are no tears, holes, or abrasions in the nylon panels or netting, that the canopy and frame are securely attached to the hospital bed, and that the metal canopy frame is completely padded by the foam canopy pads and they are in good condition.
2. **Mattress.** The mattress must be fully zippered into the mattress compartment. **NEVER** put a mattress inside the patient area (See Fig. 18, Page 18) or the patient may climb under it and become ENTRAPPED.
3. **Clutter and Cleanliness.** Make sure the bed is clean and free of clutter or foreign objects that may pose a risk of self-injury or suffocation.
4. **Bed Height and Bed Control.** Make sure the bed is at the lowest height. This will help reduce risk of tipping the bed if the patient becomes agitated or aggressive. **NEVER** leave the Bed Control inside the patient area when the patient is unattended.
5. **Head Elevation.** For at-risk patients, leave the mattress FLAT, with the head of the bed DOWN (See Page 9). If you need to raise the patient’s head or torso, use a Posey Torso Cushion (REF 8025, Page 25) to help reduce the risk of ENTRAPMENT when an at-risk patient is unattended (See “Warnings and Precautions,” Page 9). If the head of the bed is raised for patients at-risk of ENTRAPMENT, use Posey Filler Cushions (REF 8021, Page 25) to help reduce the risk (See Fig. 6). Monitor per facility policy or at least hourly to ensure that the Posey Filler Cushions stay in place.
6. **Locking Casters.** To help reduce the risk of unwanted bed movement, engage central braking system to ensure all four casters are fully locked when the patient is in bed (See Figs. 16 and 17, Page 17).
7. **Zippers and Quick-Release Buckles.** Test that all zippers open easily and close securely and there are no gaps or openings when pressure is applied to the zippers. Test the entire length of all zipper closures by pressing against the access panel or canopy material near each zipper to make sure they are securely closed. **ALWAYS** use the zipper pull-tabs and clip the Quick-Release Buckles on all access panels (See Fig. 7).
8. **Drainage and Tube Ports.** Make sure zippers are fully closed when ports are not in use. If in use, check that the flow is not impeded (See Figs. 22 and 23, Page 19).
9. **Perimeter Guards.** Check that both guards are unzipped (See Page 18). You must be able to access the patient quickly in an emergency.
10. **Nurse Call Button.** If permitted by the patient’s CARE PLAN, make sure the Nurse Call Button is easily accessible to the patient.



Fig. 6. Filler Cushions with head of bed in the up position



Fig. 7. Quick-Release Buckle with zipper secured

Components of the Posey Bed 8080 (Refer to Fig. 1, Page 7)

Access Panels

The Posey Bed has four zippered access panels: two “U” side panels, a Head panel, and a Foot panel. All panels are clearly labeled. Each zipper has a pull-tab for opening and closing zippers. At the start of each zipper is a Quick-Release Buckle (See Fig. 1, Page 7).



Fig. 8. Zipper Pull-Tabs

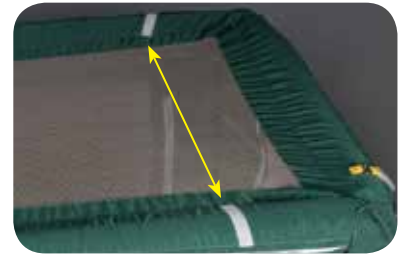


Fig. 9. Hook and loop tab location on Top Panel

The “U” side panels open completely for easy patient access. There are Hook and Loop tabs on the top panel. Use these to hold the “U” side panels up and out of the way when open.

Bed Control

The Posey Bed has an electronic Bed Control. You can lower the mattress to 53 centimeters for ease of transfer and when the patient is unattended. You can raise the mattress to 95 centimeters to help reduce the risk of back strain or injury to the caregiver during patient care.

⚠ WARNING Keep the Mattress FLAT with the head of the bed DOWN, when an at-risk patient is unattended. If you need to raise the patient’s head or torso (for example, while watching TV, or if called for by the doctor’s orders or CARE PLAN), you can use a Posey Torso Cushion (REF 8025, Page 25).



Fig. 10. Bed Control Holder Ring

See ENTRAPMENT RISK section on Page 9 for more information and safety precautions regarding ENTRAPMENT.

Keep the Bed Control out of the patient’s reach. The bracket on the rear of the Bed Control can be used to hold the control in an easily reachable position on the Bed Control Holder Ring (See Fig. 10).

Bed Control Operation

Before using the Bed Control, make sure the bed is connected to a power source, and that the Bed Control is undamaged. Each operation may be locked individually to help prevent unauthorized bed movement (See Fig. 11). To unlock/lock a bed control operation, use the two-pronged key provided with the bed to turn the locking mechanism to the locked or unlocked position, as indicated by the icons on the Bed Control. An unlocked operation will display a green light above the locking mechanism, while a locked operation will display a yellow light. To obtain replacement keys, contact Elbur Vertriebs, GmbH.



Fig. 11. Key to unlock/lock bed control



Fig. 11A. Using the Bed Control and its buttons

HEAD OPERATION:

- 1 - raise head section
- 2 - lower head section

BED FRAME OPERATION:

- 3 - raise bed frame
- 4 - lower bed frame

FOOT OPERATION:

- 5 - raise foot section
- 6 - lower foot section

HEAD/FOOT COMBINED OPERATION:

- 7 - raise head and foot sections together
- 8 - lower head and foot sections together

Canopy Bed Strap

⚠CAUTION Secure both Canopy Bed Straps to movable UPPER parts of bed frame. Attaching straps to any other part of the bed frame may damage the mattress compartment when the bed is raised or lowered. Follow these steps:

1. Place the strap through a movable part of the UPPER bed frame (See Fig. 12).
2. Bring the strap up through the metal D-ring (See Fig. 13).
3. Bring the strap down through the second metal D-ring (See Fig. 14).
4. Pull to tighten (See Fig. 15).
5. Repeat on opposite side.



Fig. 12. Bed Strap through frame



Fig. 13. Bed Strap through D-Ring



Fig. 14. Bed Strap through second D-Ring



Fig. 15. Canopy Bed Strap attached to bed frame

Locking Casters

The Posey Bed has four swivel-wheeled Locking Casters. Lock the brakes for patient transfer to help reduce the risk of unwanted bed movement. Unlock to transport bed (See Fig. 16). To lock, turn the casters to point towards the mattress support under the bed. Then, on the head side of the bed, press down on the brake lever with your foot to lock the four casters (See Fig. 17). To unlock, push up on the brake levers with your foot.

⚠CAUTION During patient care and transfers, make sure all four casters are securely locked.



Fig. 16. Caster, unlocked



Fig. 17. Casters locked



Mattress Compartment

The Posey Bed has an enclosed mattress compartment (See Fig. 18). It is designed to fit a 15 cm x 90 cm x 200 cm mattress. The mattress has a zippered waterproof cover, which should NOT be removed. The Posey Bed 8080 is NOT compatible with any type of air mattress.



Fig. 18. Placing the Mattress into the Mattress Compartment

⚠ WARNING To help reduce the risk of ENTRAPMENT or suffocation:

- **NEVER** use a mattress of a different size than the compartment is designed to fit. Using a smaller mattress will result in gaps between the canopy and mattress. Using a larger mattress will stress the fabric and may damage the zipper.
- The mattress must be fully zippered into the mattress compartment at all times when a patient is in the Posey Bed.
- **NEVER** open or close the mattress compartment while the head or knee of the bed is in the UP position, as this may damage the fabric and/or the zipper.
- **NEVER** use a mattress less than fifteen centimeters high.
- **NEVER** put a mattress inside the patient area of the bed.

Mattress Accessories

Although the nylon surface of the Posey mattress compartment is skin friendly, sheets or an incontinence pad may be needed for added patient comfort or skin protection.

- If sheets are called for by the CARE PLAN or physician's orders, you can use a Posey Support Surface (REF 8007, Page 25) inside the canopy to help secure the sheets and provide added padding for comfort.
- To help protect the patient and the bedding from urine spills, a Posey Incontinence Pad can be used inside the canopy (REF 8005A, Page 25).

Perimeter Guards

The Posey Bed has a nylon fabric Perimeter Guard on each side of the patient compartment (See Fig. 19). These are temporary barriers only to help reduce the risk of a patient fall while a "U" side panel is open for patient care.

⚠ CAUTION

- Monitor the patient closely and **NEVER** leave a patient unattended while the access panel is open and a Perimeter Guard is in use. The Perimeter Guard will NOT prevent the patient from falling out of bed.
- When access panels are closed and patient is in bed, make sure both Perimeter Guards are unzipped. You must be able to access the patient quickly in an emergency.



Fig. 19. Proper use of a Posey Bed Perimeter Guard during patient care

Use Transport Handles

The transport handles are designed to be used when moving the bed from one location to another. This would include loading and unloading unit from a delivery vehicle, relocating unit from hospital storage area to a patient's room, or transporting the bed from one room to another.

The easily identified YELLOW handles are on all four (4) corners. The level on the handles can be adjusted by changing the height of the bed using the bed control. The bed can be either pulled or pushed by using the handles for better control.



Quick-Release Buckles

There is a Quick-Release Buckle at the start of each zipper. Pinch the two sides together and pull the clip apart to open. To close the Quick-Release Buckles, push the two ends together until you hear a click. **ALWAYS** tug at the clip after closing to make sure it is engaged (See Fig. 20). Damaged or non-working buckles must be replaced immediately. Call your local Authorized Posey Bed Dealer for replacement.

- ⚠ WARNING** Make sure Quick-Release Buckles are securely fastened on all four Access Panels on the Posey Bed 8080 model before you leave the patient's bedside. A failure to do so could result in serious injury or death from a fall or unassisted bed exit because the zippers will not be securely buckled closed.



Fig. 20. Quick-Release Buckle with zipper secured

Tube and Drainage Ports

To run a tube/line into the patient compartment, unzip the port, run the tube or line through the zipper opening into the patient compartment, and zip the port closed.

- Make sure the tube is connected, and that the zipper is closed as much as possible, but does not impede the flow of the tube.
- **NEVER** feed an incoming patient line or tube through the netting (See Fig. 21). **ALWAYS** use the Tube and/or Drainage Ports (See Figs. 22 and 23).
- Check the integrity of all tubes when raising or lowering the bed.

⚠ WARNING Make sure zippers are fully closed when ports are not in use. This will help reduce the risk of the patient opening a port, or trying to escape by putting a hand or foot through a port. **NEVER** leave an unused port open when the patient is unattended.



Fig. 21. DO NOT place Tube through netting



Fig. 22. The Drainage Port in use



Fig. 23. The Tube Port in use

Zippers and Pull-Tabs

- Inspect zipper coils for any kinks or misalignment (See Fig. 24). Test that all zippers open easily and close securely and there are no gaps or openings when pressure is applied along the entire length of each zipper.
- If a zipper has been damaged (See Fig. 25A), it may not fully close.
- **ALWAYS** use the zipper pull-tabs when opening and closing panels (See Fig. 26). **NEVER** rip the panels open, as this may damage the fabric or the zippers (See Fig. 26A).
- **NEVER** use the bed if a zipper slider is damaged or the pull-tab is missing or broken. Call your local Authorized Posey Bed Dealer for repair instructions.
- **NEVER** use the bed if a zipper coil is kinked or misaligned.

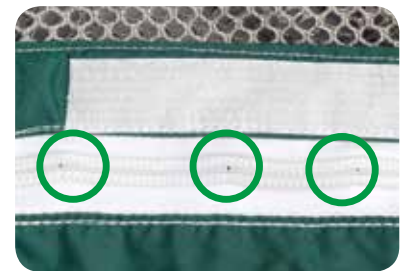


Fig. 24. Kinks in zipper



Fig. 25. Undamaged Zipper Slider

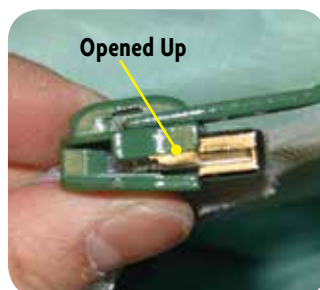


Fig. 25A. Zipper Slider Damaged from ripping the access panel open



Fig. 26. ALWAYS use the zipper pull-tabs when opening and closing the access panels



Fig. 26A. DO NOT rip panels open as this will damage the zipper slider (See Fig. 25A) and prevent the zipper from closing securely

Zippers and Pull-Tabs (Continued)

⚠ WARNING NEVER leave the patient's bedside until all access panel zippers are securely closed. Test the entire length of each zipper by pressing against the panel near the zipper to make sure it is securely closed and the access panel will not open when pressure is applied (See Fig. 27). A failure to heed this warning could result in serious injury or death from a fall or unassisted bed exit. See "Check the Zippers" section, Page 10.

ALWAYS test that the zipper is securely closed by pressing against the entire length of the closed zipper to make sure it will not open when pressure is applied (Fig. 27).



Fig. 27

CPR Release Levers

Emergency CPR release levers are located on both sides of the bed between the head and middle of the bed (See Fig. 28). The CPR release levers allow the caregiver to manually return the head of the bed from a raised position to a flat position quickly to enable rapid caregiver emergency response.

To operate, squeeze the CPR release handle. The bed will automatically return to a flat position.

NOTE: In the event the CPR release handle is engaged while the head of the bed is being raised or lowered using the hand control, the actuator that controls the raising and lowering of the head will disengage. The disengagement of the actuator does not interfere with the CPR quick release function, only with the electronic bed controls. In order to reengage the actuator, depress the "lower head" button on the hand control (see page 16 "Bed Control Operation") until the actuator reengages. Depressing the "lower head" button on the hand control will run the actuator in an inward motion, allowing the actuator to reengage.



Fig. 28

Battery Back-up

A Linak BA18 battery offers emergency power back-up for bed operation in the event of a power outage. The battery is located underneath the bed platform at the head of the bed.

Linak BA18 Features:

- Straight cable with DC plug 5.5 x 2.5 (Max. length = 1.3 m)
- Standard protection class: IPX1
- The BA18 is exchangeable without opening the CB (BA18 is a separate box)
- Rated Capacity is 1.3 Ah 24 V
- Charging current is max. 500 mA
- Operation at ambient temperatures of +5°C to +40°C

To charge the battery, plug the bed into the mains power supply. The battery will charge only when the control box is connected to an external power source (e.g. when the bed is plugged into wall socket); the BA18 battery cannot be charged with an external charger.

Prior to first use of the battery, charge for 24 hours in order to reach proper function and to prolong the lifetime of the battery. A fully charged battery stored at 25° C must be recharged every 6 - 7 months. The longest lifetime is obtained when the battery is kept fully charged.

⚠ CAUTION When the battery voltage reaches 'low level,' a battery alarm beeps constantly. 'Low level' battery limit corresponds to approximately 19 V +/- 5%. To maintain the best possible battery life, the battery should be charged immediately when it reaches 'low level.'

⚠ CAUTION When the battery voltage reaches 'critical level,' the battery alarm function shuts down all operation immediately. Critical level limit corresponds to approximately 17.5 V (+/- 5%). Trying to operate the bed while the battery voltage is at 'critical level' could result in damage to the actuator.



Fig. 29

Cleaning Instructions

FOAM CANOPY PADS AND POSEY BED MATTRESS. Replace the foam mattress and Foam Canopy Pads as needed; For mattress replacement, call your local Authorized Posey Bed Dealer (Page 24). If they become extremely soiled (BIOHAZARDOUS), follow instructions on Page 24 for disposal.

⚠ CAUTION DO NOT remove the foam mattress from its cover for cleaning and DO NOT clean the Posey Foam Canopy Pads. Doing so will damage the foam and make it unusable.

FOR QUICK CLEANING. Wipe the fabric of the Posey Bed with a damp cloth. If needed, use a diluted disinfectant or a water-based germicide as specified on the product label. **NEVER** use a concentration greater than recommended by the manufacturer. Rinse the fabric with water to remove all excess cleaning or spot-cleaning agents. Wipe or air dry before use.

PREPARATION FOR WASHING:

1. Remove all waste from the Posey Bed.
2. Remove all instructions from the pocket at the foot of the bed.
3. Remove the Bed Control from the canopy.
4. Remove the mattress from the mattress compartment.
5. Remove the canopy (See Figs. 30-33A, Pages 21-22).



HOOK AND LOOP CLEANING. The “hook” of hook and loop strips has a tendency to collect lint after repeated use and/or laundering, reducing the grip strength of the hook and loop. Test for secure hold before each use. **ALWAYS** fasten the mating “hook and loop” strips together before laundering a bed canopy. The rough “hook” side may damage the netting and collect lint during the laundry process. Fastening the “hook” to the “loop” during laundering will help to prevent lint buildup. Occasionally go over the “hook” side with a stiff brush to remove lint.

REMOVE THE CANOPY FOR REPLACEMENT OR WASHING. DO NOT overload the washing machine. To help reduce the size of the load, remove the “U” side panels from the main canopy and wash them separately. Follow these steps to remove the “U” side panels:

1. Unclip the Quick-Release Buckle and undo the horizontal Hook and Loop Strips at the Top of the canopy on the Head of the bed. Unzip the zipper at the Head of the bed towards the Foot of the bed (See Figs. 30 and 30A).

2. Undo the vertical Hook and Loop Strip at the Top of the canopy on the Head of the bed. Unzip the zipper at the Top of the canopy on the Head of the bed towards the Bottom end of the Head of the bed (See Figs. 31 and 31A).



Fig. 30



Fig. 30A



Fig. 31



Fig. 31A



3. Undo the horizontal Hook and Loop strips at the Bottom of the canopy at the Foot end of the bed. Unzip the zipper at the Bottom of the canopy on the Foot of the bed towards the Head of the bed (See Figs. 32 and 32A).

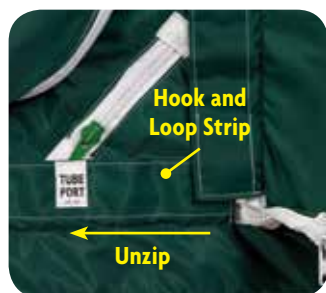


Fig. 32

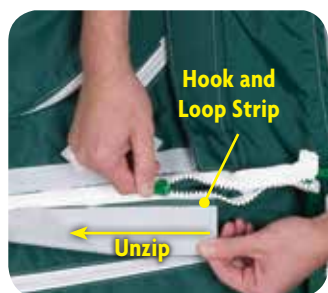


Fig. 32A

4. Undo the vertical Hook and Loop Strip at the Bottom of the canopy on the Foot of the bed. Unzip the zipper at the Bottom of the canopy on the Foot of the bed towards the Top end of the Foot of the bed (See Figs. 33 and 33A). The “U” side panel should be free from the canopy.



Fig. 33



Fig. 33A

5. Repeat steps 1-4 to remove the other “U” side panel.
6. Remove the remaining canopy from the frame.

CAUTION After removing the “U” side panels and canopy, close all Hook and Loop strips before washing. Failure to do so may result in damage to the fabric or straps during machine washing.

TO REASSEMBLE THE “U” SIDE PANEL. Reverse the above steps.



Machine Washing the Canopy

WARNING ALWAYS wash the canopy between each patient use for infection control and to help prevent transmission of infectious disease.

- Wash the canopy on gentlest cycle in COLD water (18° to 30°C) for approximately 25 minutes.
- Use a mild laundry detergent as recommended on the detergent container.
- Load the panels LOOSELY in the washing machine for effective cleaning.
- Rinse thoroughly with water.

CAUTION

- DO NOT use industrial extractor-type laundry equipment. Pressure from the extractor will damage the zippers and buckles.
- NEVER use bleach, harsh cleansers, or solvents. These products may cause the backing to separate from the fabric and ruin the water-repellent quality of the fabric.
- To avoid damage to fabric, only use detergents intended for use in machine laundering.
- ALWAYS fasten mating “Hook and Loop” strips together before laundering a bed canopy. The rough “hook” side may damage the netting and collect lint during the laundry process.

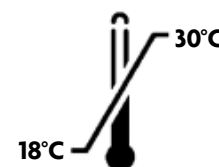
DRYING. Hang-dry at room temperature or machine-dry on air-only cycle (no heat).

CAUTION

- Use of heat in drying may cause the backing to separate from the canopy fabric, ruining the water-repellent quality of the fabric.
- After drying, check and remove any lint from the Hook and Loop strips with a stiff brush. This will help ensure a tight closure.

CLEANING THE BED FRAME. The bed frame undercarriage may be wiped with a damp, well-wrung cloth. Be sure the cloth is damp, not wet. Excess water in or around the motors or bed control damages these components.

CAUTION Shock Hazard. Unplug the power cord from the wall outlet before cleaning the bed frame.



Installing the Canopy After Washing

1. Unfold the canopy (part K) on the bed, orienting the Posey Bed Instruction Storage Pocket to the foot of the bed (See Fig. 34).

⚠ CAUTION

ALWAYS orient the canopy properly prior to attaching to the bed frame by placing the Posey Bed Instruction Storage Pocket at the foot of the bed. Failure to do so will damage the canopy or the bed motor when the head of the bed is raised.

2. Unzip all four Top Rail zippers (the long side and the short side).
3. Beginning with one long side, wrap the top rail section around the foam, pull the canopy material together, and zip (See Fig. 35). Repeat on the opposite long side.

⚠ WARNING

Make sure the zipper pins are properly seated (See Figs. 36 and 37). Failure to do so will prevent the zipper from closing securely, which may lead to unassisted bed exit and patient injury.

⚠ CAUTION

To avoid damage to zippers or fabric, be sure to pull the fabric close as you fully zip each panel.

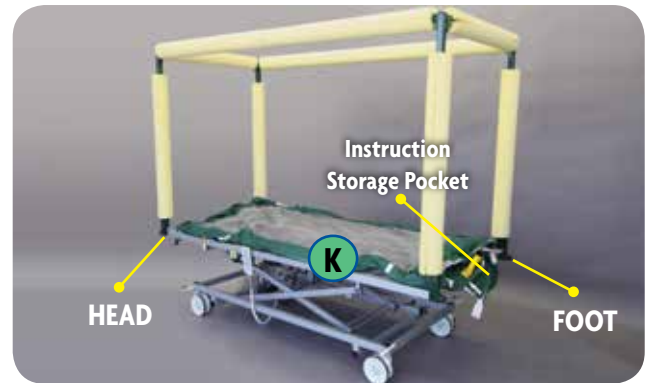


Fig. 34. Canopy orientation on Bed Frame



Fig. 35. Zipping Canopy on Bed Frame



Fig. 36. Zipper Pins Properly Seated



Fig. 37. Zipper Pins NOT Properly Seated

4. Unzip all four corner legs.
5. Zip the two short Top Rails.
6. At each corner leg, wrap the Canopy Cover around the foam, pull the canopy material together, and zip. Make sure the zipper pins are properly seated (See Figs. 36 and 37). Use Hook and Loop to cover the corners (See Fig. 38). Repeat on all four sides until all corner legs have been attached around the foam of the canopy.



Fig. 38. Corner Cover

Maintenance

Canopy and Frame

Your maintenance department should inspect the Posey Bed whenever the canopy is disassembled for laundry or at least monthly to ensure the canopy and frame are intact and safe for use. If you have any questions about the condition of the Posey Bed, contact your local Authorized Posey Bed Dealer.

Bed Frame Undercarriage

The Posey Bed 8080 uses a PB526II Posey or PB528 Posey that is manufactured and supplied by Elbur Vertriebs GmbH.

⚠ CAUTION Remove the bed from use immediately if you find any broken welds or cracks in the bed frame, canopy frame, or other support members.

Monthly Visual Inspection

Your maintenance department needs to inspect all moving bed parts at least monthly. Check for and tighten any loose hardware. If you have any questions about the condition of the Posey Bed, contact your local Authorized Posey Bed Dealer.

Storage and Handling

- This device is designed for use in normal indoor environments.
- This device may be stored in ambient warehouse temperatures at normal humidity levels. Avoid excess moisture or high humidity that may damage product materials.

Useful Life of the Posey Bed Canopy

The useful life of the Posey Bed canopy will vary depending on:

- Cleaning agents used,
- Frequency of wash,
- Wash conditions, and
- Product usage.

ALWAYS follow the Cleaning Instructions on Pages 21-22 to optimize the life of the bed. If any component fails during use, IMMEDIATELY remove the bed from use and call your local Authorized Posey Bed Dealer for replacement parts or unit repair.

⚠ WARNING NEVER use the Posey Bed if the canopy is damaged, the zippers don't open easily or close securely, the frame is bent or damaged or not securely attached to the bed, or there are missing parts. Immediately remove the patient from the bed to avoid serious injury.

Instructions to Safely Dispose of the Device

BIOHAZARDOUS waste disposal. If the fabric or foam padding or mattress of the Posey Bed becomes extremely soiled with biohazardous materials, dispose per your facility policy, applicable local, state, federal or European Union regulations for BIOHAZARDOUS materials.

⚠ WARNING A failure to clean the Posey Bed and/or dispose of BIOHAZARDOUS material properly may result in serious injury to the patient and/or caregivers.



Use of Posey Accessories with the Posey Bed 8080

We recommend use of the following accessories with the Posey Bed 8080.

⚠ WARNING NEVER use any accessory with the Posey Bed other than those recommended by Posey. A failure to heed this warning may result in serious injury or patient death.

Posey Support Surface (REF 8007)

To provide additional padding and to help secure sheets by tucking them underneath the support surface.



Posey Bed Incontinence Pad (REF 8005A)

To help protect mattress and bedding from urine spills. 8005A can be used with the Posey Support Surface.



Posey Filler Cushions (REF 8021)

To help reduce the risk of ENTRAPMENT injury from gaps created when the head of the bed is in the UP position for unattended at-risk patients.



Posey Torso Cushion (REF 8025)

To help reduce the risk of ENTRAPMENT and position the patient comfortably when the head of the bed is DOWN.



Posey Bed Travel Cover (REF 8071)

To provide a cover for the Posey Bed during transport and storage.



Troubleshooting Information and Frequently Asked Questions

Canopy

1. **Q: How do I know if the side panel is oriented properly after laundering?**

A: To reinstall the side panel, make sure the zipper slider and the Perimeter Guard face outward (See Fig. 39).

2. **Q: Why is the zipper difficult to open or close?**

A: It could be one or more of the following reasons:

- a. Fabric, bedding, or other material caught in the slider. To release material, back the slider off by pulling the tab backward in the opposite direction until the slider is free. Make sure the canopy is intact and there are no tears or holes in the fabric.
- b. Check the zipper teeth to make sure none of the teeth are broken (See Fig. 43).



Fig. 39. Zipper Slider and Perimeter Guard

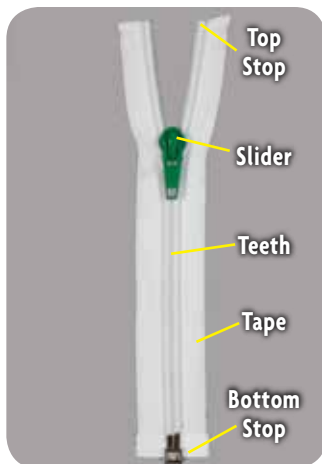


Fig. 40. Tape

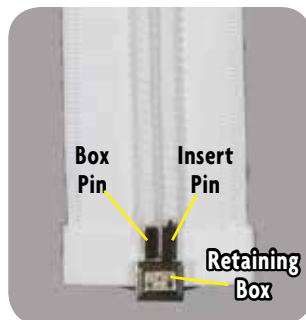


Fig. 41. Zipper Close Up

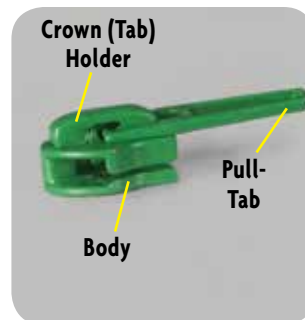


Fig. 42. Undamaged Zipper Slider



Fig. 43. Zipper Teeth Broken

- c. Use the pull-tab to slide the zipper. Each access panel zipper has a warning instruction plastic tag (See Fig. 44). If the plastic tag is damaged or becomes unreadable, it must be replaced. Call your local Authorized Posey Bed Dealer and request a replacement free of charge (Part #L9368).

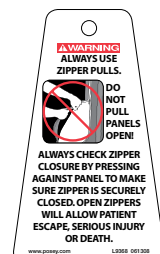


Fig. 44. Plastic Tag

Inspect zipper coils for any kinks or misalignment (See Fig. 45). **ALWAYS** test the entire length of each zipper by pressing against the panel near the zipper to make sure it is securely closed and the access panel will not open when pressure is applied (See Fig. 45A).

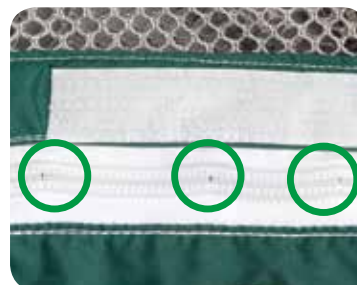


Fig. 45. Kinks in zipper



Fig. 45A. ALWAYS test that the zipper is securely closed by pressing against the entire length of the closed zipper to make sure it will not open when pressure is applied

3. **Q: Why is the zipper separating after zipping up (See Fig. 46)?**

A: The slider is damaged and does not properly lock the teeth when it is being opened up (See Fig. 47). DO NOT use the Posey Bed. Call Posey Technical Service for service. This problem can be avoided by **ALWAYS** using the zipper pull-tab to open the zipper. **NEVER** rip the access panel open because it will damage the slider and prevent the zipper from closing securely (See Fig. 48).



Fig. 46. Zipper Separating

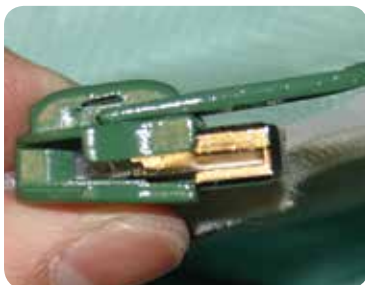


Fig. 47. Zipper Slider Damaged from ripping the access panel open



Fig. 48. DO NOT Rip Panels Open

4. **Q: What can I do if patient is rubbing against the netting?**

A: Take the patient out of the Posey Bed and consult the doctor or the CARE PLAN about proper care.

5. **Q: How do I clean the canopy if it becomes soiled?**

A: For cleaning instructions, please refer to Pages 21-22.

6. **Q: How do I clean lint or foreign material from the hook and loop tabs and strips?**

A: Use a stiff brush to remove any lint or foreign material. Close hook and loop strips whenever possible before laundering to prevent lint buildup in hook material.

7. **Q: How can I get extra training materials?**

A: Please call your local Authorized Posey Bed Dealer.

8. **Q: Where do I run IV lines?**

A: Please refer to "Tube & Drainage Ports" section on Page 19.

9. **Q: Can I use an inflatable air-type mattress?**

A: No. The Posey Bed is designed for use with standard mattresses only. The mattress must be fully zippered into the mattress compartment at all times. Please refer to the "Mattress Compartment" section on Page 18.

10. **Q: Can I use our facility mattress during cleaning of the Posey Bed mattress?**

A: Yes, if it meets the size requirements for the Posey mattress compartment. The mattress must be fully zippered into the mattress compartment at all times. Please refer to the "Mattress Compartment" section on Page 18.

Frame

1. **Q: How do I unlock the casters to move the bed out of a room?**

A: To unlock the casters, use your foot to push up on the brake levers on the head or foot side of the bed. Please refer to the "Locking Casters" section on Page 17.

General FAQ's

1. **Q: Where do I find the serial number of the Posey Bed canopy?**

A: The serial number label is stored at the bottom right of the head side of the bed (See Fig. 48).



Fig. 48. Serial Number Label

2. **Q: Where are the side rails?**

A: The Posey Bed 8080 does not have side rails. **NEVER** use side rails with the Posey Bed, as doing so will increase the risk of ENTRAPMENT. The Posey Bed has two Perimeter Guards, which act as “soft” side rails to help reduce the risk of a patient fall while a “U” access panel is open for patient care. For proper use, please refer to the “Perimeter Guards” section on Page 18.

3. **Q: Can I use a patient lifter with the Posey Bed 8080?**

A: Yes, however, **NEVER** use a patient lifter for transfer unless it has been tested to make sure there is enough clearance under the canopy frame to do so safely. The clearance of the opening side access panel is 97cm H x 117cm W (at bottom) (See Fig. 49).



Fig. 49. Access Panel Opening Clearance

Bed Motor and Control Box

If there is a loss of Electrical Function

CAUTION Remove the patient from the Posey Bed immediately if there is a loss of electrical function.

If there is a loss of electrical function or the Bed Control is not responding:

1. Check all cords including Bed Control, all Motors cords, and AC power cord. Make sure they are plugged in properly and are not damaged.
2. Switch the Bed Control with a new one that you know works properly.
3. If these steps fail to resolve the problem, call your local Posey Bed dealer.

To remove a bed frame motor for service or replacement, call your local Posey Bed dealer.

Additional Information

Disease and Self-Care Information

To help reduce the chance of transmitting infectious disease, all caregivers must wash their hands after patient care.

Travel or International Use

The Posey Bed 8080 is intended for use in Europe. The Posey Bed utilizes a 230 VAC/50 Hz outlet.

Technical Specifications



Technical Specifications/ Dimensions:

Area: 24 square feet - **Volume (Inside):** 2 cubic meters

Total Weight completely assembled (bed frame and canopy): 148.5 Kg

Total Weight of the canopy only: 8 Kg

Maximum Back Angle: 70° to Horizontal

Maximum Knee Angle: 20° to Horizontal

Bed Electrical Specifications:

- **Power:** 230 VAC
- **Frequency:** 50Hz
- **Ingress Protection:** IPX4
- **Safety Class:** II

Replacement Parts

To order replacement parts for the Posey Bed, call your local Authorized Posey Bed Dealer.

8080 REPLACEMENT PARTS AVAILABLE FROM POSEY

Description	Qty.	REF No.
Foam Padding, Short	1	RP8080FMS
Foam Padding, Long	1	RP8080FML
Canopy, Complete	1	8080T-ENG
Panel, Canopy, Right Side	1	RP8080PRT-ENG
Panel, Canopy, Left Side	1	RP8080PLT-ENG
Quick-Release Buckle w/Strap	1	RP8080QRB

Posey Limited Warranty

NOTE:

The Posey Bed canopy is designed to only be used on a modified Elbur model PB526II Posey or PB528 Posey and should not be used on any other bed platform.

Contact your local Posey Bed dealer for warranty information for the hospital bed, canopy frame and mattress.

What Does the Posey Warranty Cover?

Posey warrants to the original purchaser that the Posey Bed 8080 canopy is free of defects in materials and workmanship. If the product is found to be defective in workmanship or materials, we will repair or replace it at our option at no charge, other than certain transportation and cleaning charges.

How Long Does the Warranty Last?

The Posey warranty is one (1) year from the date of purchase for the canopy. As of March 1, 2014, Posey will no longer repair any canopy that is more than 5 years old, as determined by the year and month of manufacture.

What is NOT Covered by this Warranty?

- Damage to the nylon canopy or other components caused by:
 1. use in unsuitable environmental conditions or failure to assemble or maintain the product in accord with user and service instructions;
 2. abuse (including but not limited to patient damage), misuse, alteration, exposure to extreme heat, or by natural or external forces (such as flood or fire).
- Damage caused by alteration, modification, or repair, unless performed by Posey.
- Consequential or incidental damage, including but not limited to loss of income or profits, is not covered. The laws of some countries may not allow exclusion of such damages, so this limitation may not apply to you.

How to Get Service.

Contact your local Authorized Posey Bed Dealer for service or repairs to the Posey nylon canopy. Replacement of the canopy frame or canopy is handled locally by your dealer. For canopy repair, contact your Posey Bed dealer. DO NOT return any Posey canopy that has not been properly cleaned and sanitized. Dirty canopies can not be cleaned, inspected or repaired due to sanitation regulations.

Cleaning and Shipping Charges.

- All shipping costs for canopies sent to Posey or your local Authorized Posey Bed Dealer must be pre-paid by you.
- Posey will pay return shipping costs via ocean freight, unless otherwise agreed.

How Do the Laws of Your Country Apply?

This warranty is governed by the laws of the State of California, USA. It gives you specific legal rights. You may have other rights, which vary from country to country. This warranty does not affect any further rights that you have under the laws in your country for sale of consumer goods.

Contact your local Authorized Posey Bed Dealer regarding all warranty work or repairs. They will instruct you regarding returns or repairs.

Technical Service

Shipping:

Return your Posey Bed for repair to your local Authorized Posey Bed Dealer. Units that can not be repaired by your local Authorized Posey Bed Dealer will be returned to Posey for repair.

Canopy Repairs. To prevent damage in shipping, clean the canopy and close all zippers.

In-Warranty Repairs:

1. Forward the product in clean condition, prepaid freight to your local Authorized Posey Bed Dealer.*
2. Include dated proof of purchase.

Out-of-Warranty repairs:

1. Forward the product in clean condition, prepaid freight to your local Authorized Posey Bed Dealer.*
2. For products that are returned for repair to Posey, Posey will quote repairs on an item-by-item basis. All quotes will include parts and labor.
3. If additional repairs are needed after the initial estimate, Posey will contact your local Authorized Posey Bed Dealer within ten (10) business days from receipt of item to obtain approval of any extra charge.

Repair Turn-around.

Units that must be returned to Posey for repair require 2 months from the date of receipt at Posey. If you return multiple units, add one week per unit. Posey will return all units in one shipment, via ocean freight, unless otherwise agreed.

***Canopies that are returned soiled or with an odor will be returned immediately and will not be inspected or repaired.**

A Special Note About Home Use

The Posey Bed May Be Used in a Home Care Setting Only:

- For the length of time it is prescribed for use by a licensed medical doctor (Rx ONLY).
- If all applicable local, state, federal and European Union regulations regarding restraint use are followed.
- If each caregiver has reviewed and understands ALL instructions and warnings for safe home use in **this entire** User Manual. Review them often until they become second nature to you.
- If a person fully trained in the use of the Posey Bed is present in the house and monitoring the patient whenever the patient is in the bed.

DOCTOR'S ORDERS: You must carefully follow the doctor's orders, and the CARE PLAN written by the medical team attending the patient when using the Posey Bed. This includes all orders for monitoring and patient release.

A NOTE ABOUT CARE PLAN: If your patient was using a Posey Bed during hospitalization or while in a nursing home, you should ask the facility for a copy of the CARE PLAN. It will help guide you with safe use of the Posey Bed. Check with the doctor if you have any questions whether a CARE PLAN is needed to help you meet the special needs of your patient.

A SPECIAL NOTE ABOUT ENTRAPMENT RISKS (REFER TO PAGE 9): Be aware that, for certain at-risk patients, there is a risk of ENTRAPMENT when the head of the bed is raised. This creates gaps or pocket areas between the head of the bed and the canopy. At-risk patients for whom special care must be taken to reduce this risk include:



- Patients who exhibit burrowing or escape behaviors. This refers to any attempt to escape or to burrow between the raised head of the bed and the canopy netting;
- Small children, frail adults, or any patient who cannot reposition or remove himself/herself from a confined area.

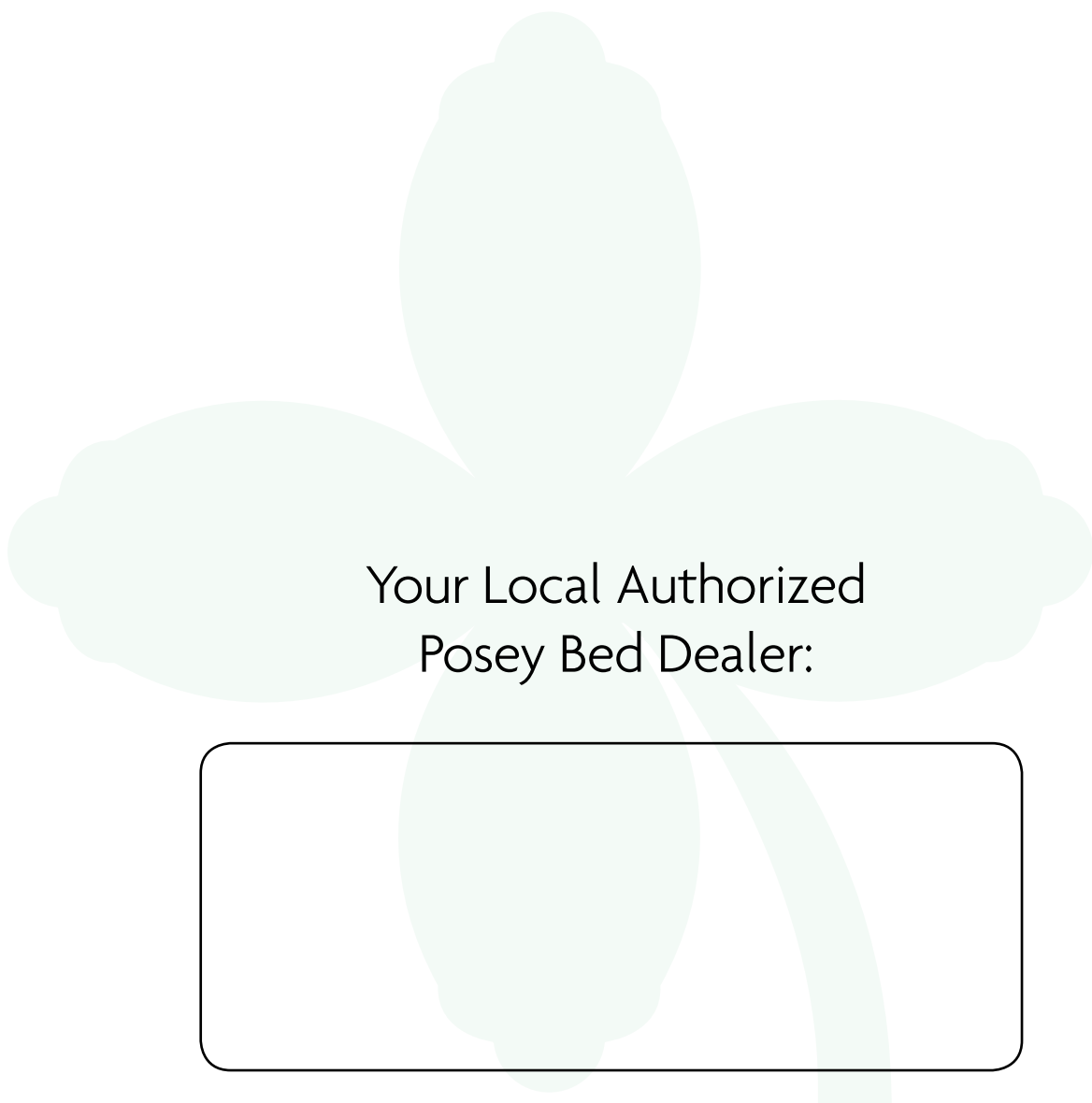
For at-risk patients, **ALWAYS** use Posey Filler Cushions (**REF** 8021, See Page 25). Refer to Page 9 in this manual for detailed information about reducing ENTRAPMENT risks, including the use of Posey Filler Cushions.

IN A PATIENT EMERGENCY, immediately address the patient's needs or remove the patient from the bed and contact your doctor or your local emergency service.

⚠ WARNING

IMPORTANCE OF PATIENT MONITORING: If possible, Posey recommends that the caregiver sleep in the same room. If you cannot be physically present to monitor the patient at certain times, you **MUST** use a device, such as a child monitor, for **CONSTANT** audio or audio/video monitoring. Test to be sure that you can hear low levels of activity in the room. Failure to do so could result in serious injury or death.

Posey® Bed 8080 User Manual



Your Local Authorized
Posey Bed Dealer:



Posey Products, LLC • 5635 Peck Road, Arcadia, CA 91006-0020 USA
Phone: 1.800.447.6739 • Fax: 1.800.767.3933 • www.posey.com
Email: TechnicalServices@posey.com



MDSS GmbH
Schiffgraben 41
D-30175 Hannover, Germany

